

Summary Proposal

WCPSS ENROLLMENT PLAN, 2018-19

YEAR FOUR OF A MULTI-YEAR APPROACH TO GROWTH MANAGEMENT

BUCKHORN CREEK ELEMENTARY

Prepared by: Office of Student Assignment

Board of Education Meeting
December 19, 2017

Why We Are Here

Staff presented the Summary Proposal to the Board on December 5, 2017.

The Board voted to approve the Enrollment Plan for 2018-2019 with the exception of Buckhorn Creek Elementary and the related schools changes associated with this base attendance area.

Staff has reviewed the questions and concerns of the Board surrounding Buckhorn Creek Elementary and has now revised their proposal.

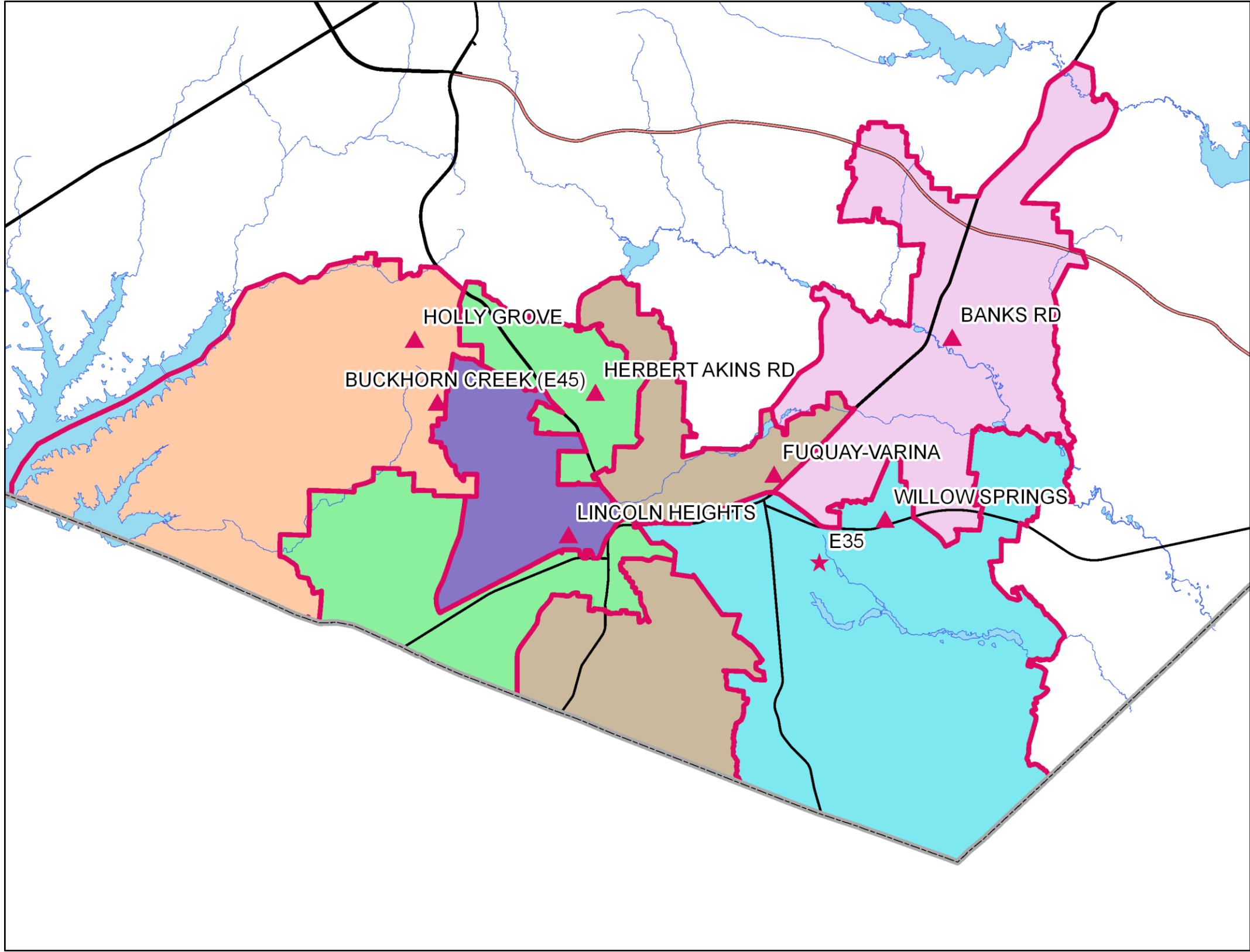
New School – Buckhorn Creek ES (2018-19) ORIGINAL PROPOSAL

- Traditional Calendar
- Year-Round Application School: Herbert Akins Rd ES / Holly Grove ES / Holly Springs ES (by catchments)
- Capacity: 662
- Impacted Schools:

2016-17 Base School	Capacity	Capacity w/ Trailers	Calendar	Base %	2016-17 ADM	2016-17 Util	2016-17 Util w/ Trl
HERBERT AKINS RD ES	1032	1032	Y	70%	1044	101%	101%
FUQUAY-VARINA ES	506	806	T	64%	832	164%	103%
HOLLY GROVE ES	902	962	Y	85%	1143	127%	119%
LINCOLN HEIGHTS ES	528	528	T	39%	462	88%	88%
WILLOW SPRINGS ES	515	835	Y	78%	1070	208%	128%
	3483	4163			4551	131%	109%

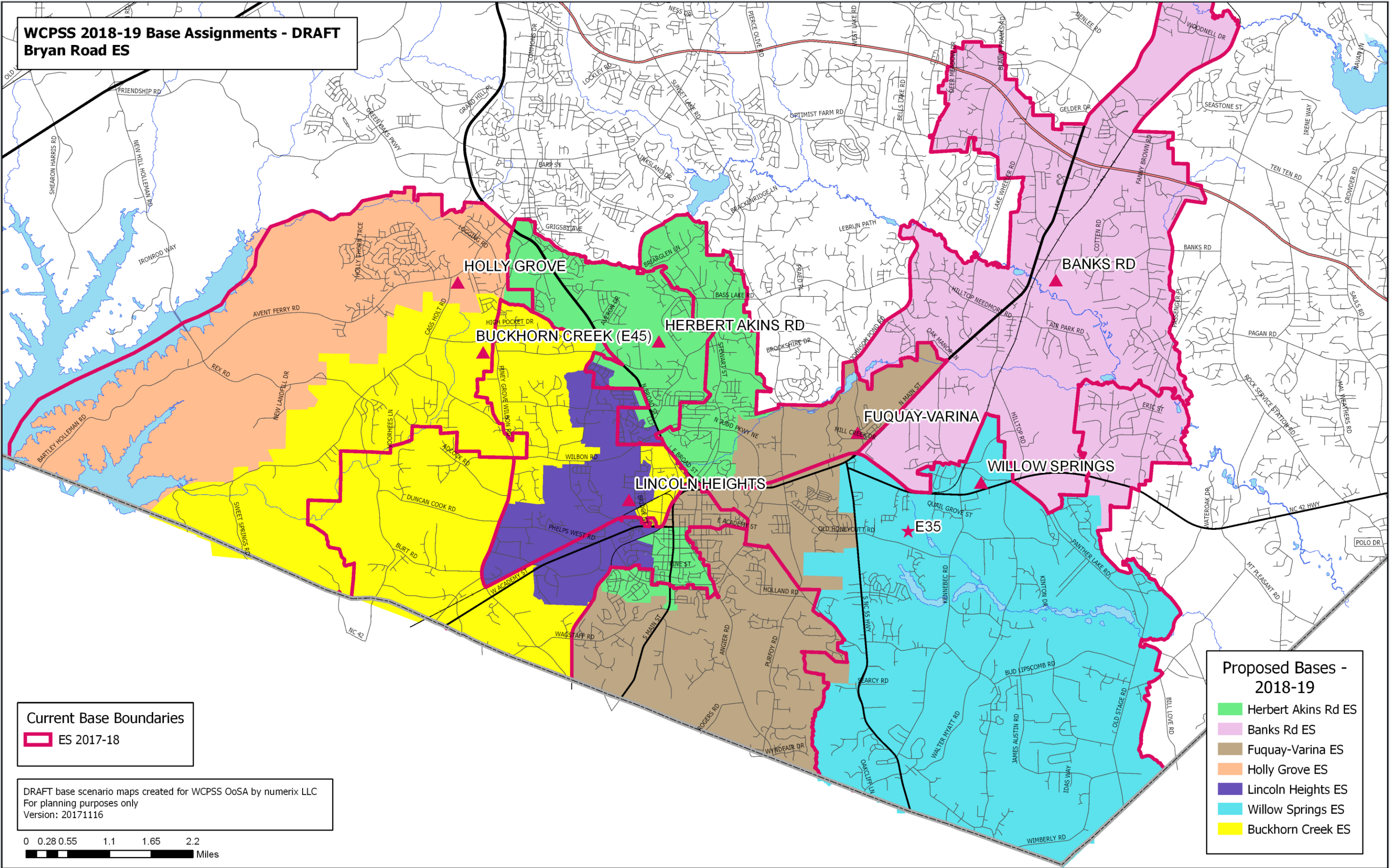
- Utilization based on 2018-19 Capacity and 2016-17 Month-2 Average Daily Membership (ADM)
- Y – Year-Round Calendar, All Tracks (1-4)
- Y4 – Year-Round Calendar, Track 4 Only
- T – Traditional Calendar
- Base % = Percentage of WCPSS students within base attending the base school

2017-18 Base Areas



RED = 2017-18 ES Base Boundary

New School – Buckhorn Creek ES (2018-19) ORIGINAL PROPOSAL



New School – Buckhorn Creek ES (2018-19) ORIGINAL PROPOSAL

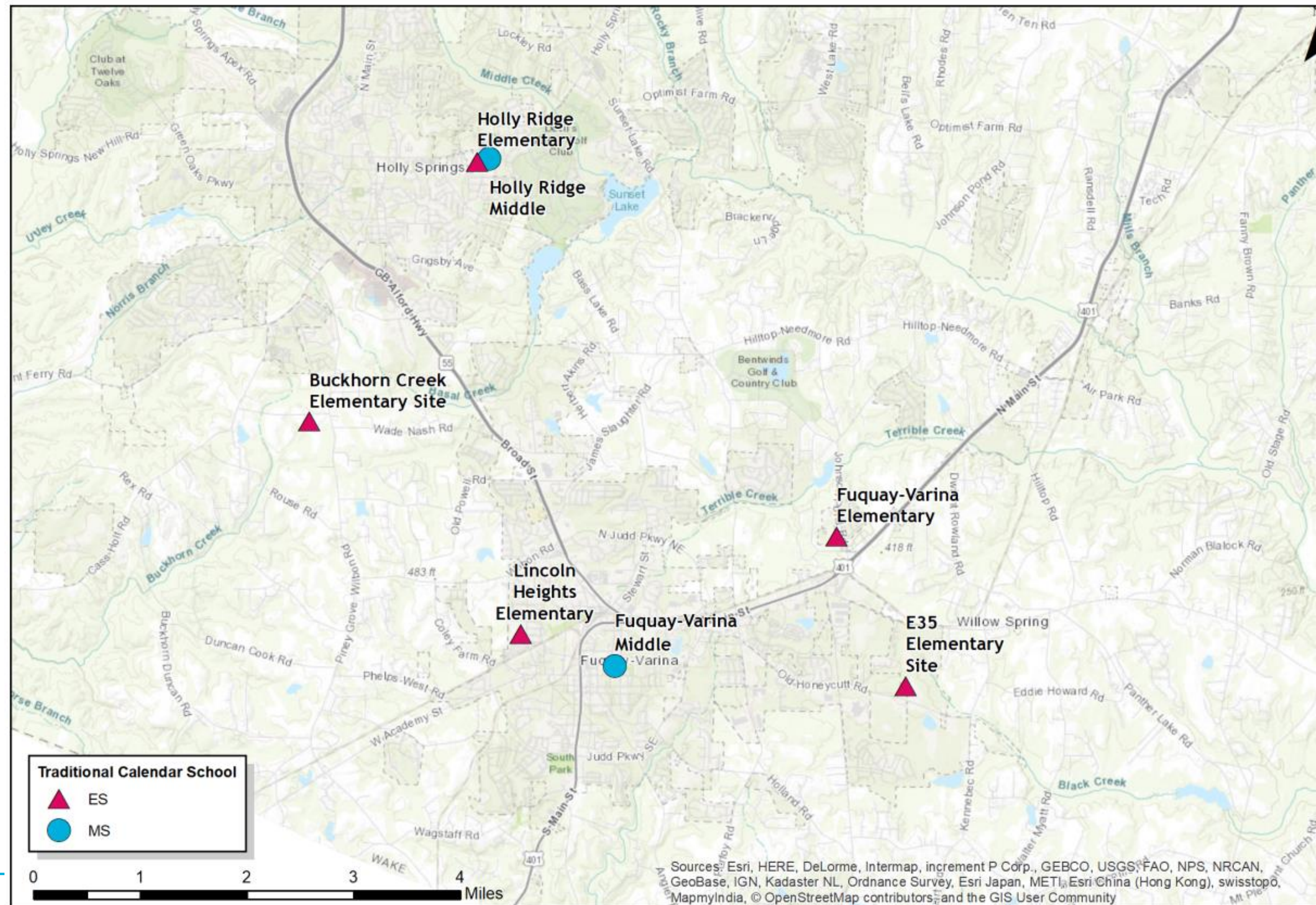
2016-17 Base School	Capacity	Capacity w/ Trailers	2018-19 Util	2018-19 Util w/ Trl	2020-21 Util	2020-21 Util w/ Trl	Res	Academic Proficiency (Grades 3-5)			
								Base	Non-Base	Agg	Actual
HERBERT AKINS RD ES	1032	1032	111%	111%	122%	122%	69%	69%	78%	72%	73%
BANKS ROAD ES	980	980	82%	82%	92%	92%	64%	68%	77%	70%	70%
FUQUAY-VARINA ES	506	806	184%	115%	193%	121%	66%	61%	68%	63%	64%
HOLLY GROVE ES	902	962	147%	138%	162%	152%	83%	84%	85%	84%	85%
LINCOLN HEIGHTS ES	528	528	96%	96%	102%	102%	61%	36%	36%	36%	37%
WILLOW SPRINGS ES	515	835	235%	145%	254%	156%	75%	80%	86%	81%	82%
BUCKHORN CREEK ES (E45)											
	4463	5143	133%	115%	144%	125%					

2018-19 Base School	Capacity	Capacity w/ Trailers	2018-19 Util	2018-19 Util w/ Trl	2020-21 Util	2020-21 Util w/ Trl	Res	Academic Proficiency (Grades 3-5)		
								Base	Non-Base	Agg
HERBERT AKINS RD ES	1032	1032	114%	114%	125%	125%	69%	67%	78%	71%
BANKS ROAD ES	980	980	93%	93%	103%	103%	66%	69%	77%	71%
FUQUAY-VARINA ES	506	806	164%	103%	165%	103%	71%	68%	68%	68%
HOLLY GROVE ES	902	962	120%	113%	132%	123%	82%	84%	85%	84%
LINCOLN HEIGHTS ES	528	528	121%	121%	129%	129%	64%	64%	36%	47%
WILLOW SPRINGS ES	515	835	184%	114%	206%	127%	74%	79%	86%	81%
BUCKHORN CREEK ES (E45)	662	662	84%	n/a	92%	n/a	70%	67%	n/a	n/a
	5125	5805	120%	106%	130%	115%				

PROFICIENCY LEGEND:
Res = Mean proficiency of students residing in base
Base = Mean proficiency of base students in base
Non-Base = Mean proficiency of non-base students
Agg = Aggregate mean proficiency of base and non-base students
Actual = Reading/English proficiency by school



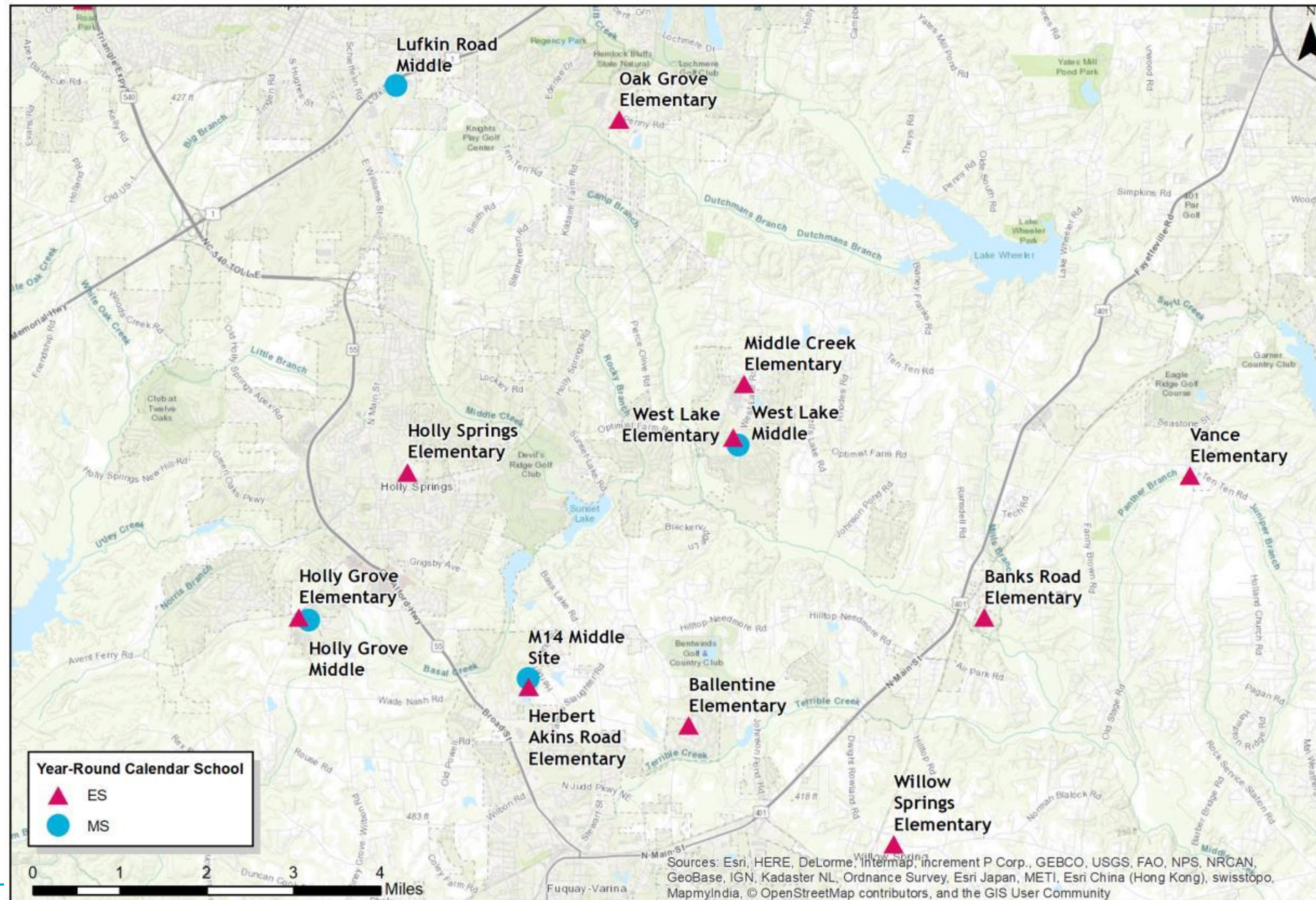
Traditional Elementary and Middle Schools



Year-Round Elementary and Middle School Locations



Year-Round Elementary and Middle Schools



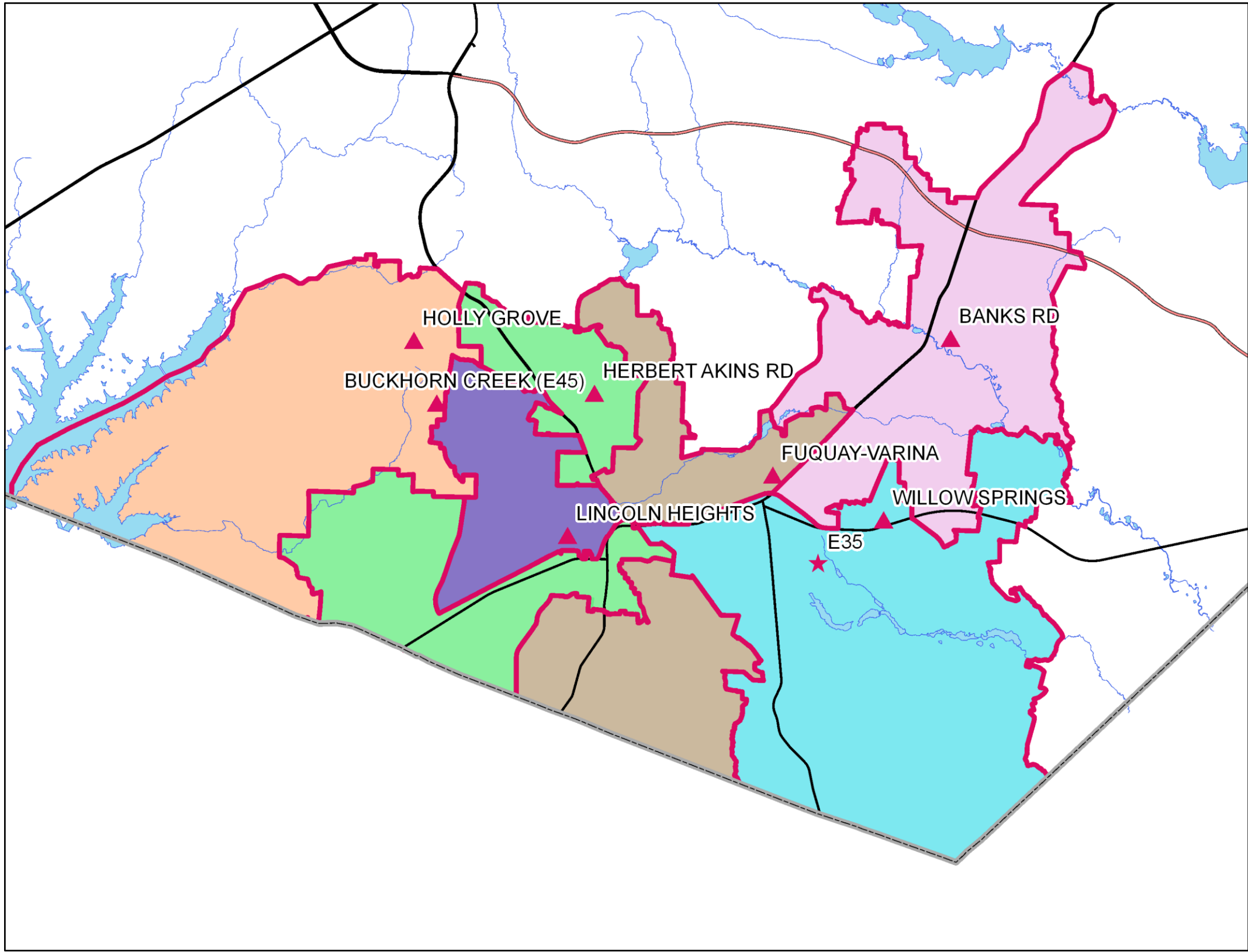
New School – Buckhorn Creek ES (2018-19) **NEW PROPOSAL**

- **Traditional Calendar**
- Year-Round Application School: Herbert Akins Rd ES / Holly Grove ES / Holly Springs ES / **Ballentine ES** (by catchments)
- Capacity: 662
- Impacted Schools:

2016-17 Base School	Capacity	Capacity w/ Trailers	Calendar	Base %	2016-17 ADM	2016-17 Util	2016-17 Util w/ Trl
HERBERT AKINS RD ES	1032	1032	Y	70%	1044	101%	101%
FUQUAY-VARINA ES	506	806	T	64%	832	164%	103%
HOLLY GROVE ES	902	962	Y	85%	1143	127%	119%
LINCOLN HEIGHTS ES	528	528	T	39%	462	88%	88%
WILLOW SPRINGS ES	515	835	Y	78%	1070	208%	128%
	3483	4163			4551	131%	109%

- Utilization based on 2018-19 Capacity and 2016-17 Month-2 Average Daily Membership (ADM)
- Y – Year-Round Calendar, All Tracks (1-4)
- Y4 – Year-Round Calendar, Track 4 Only
- T – Traditional Calendar
- Base % = Percentage of WCPSS students within base attending the base school

2017-18 Base Areas

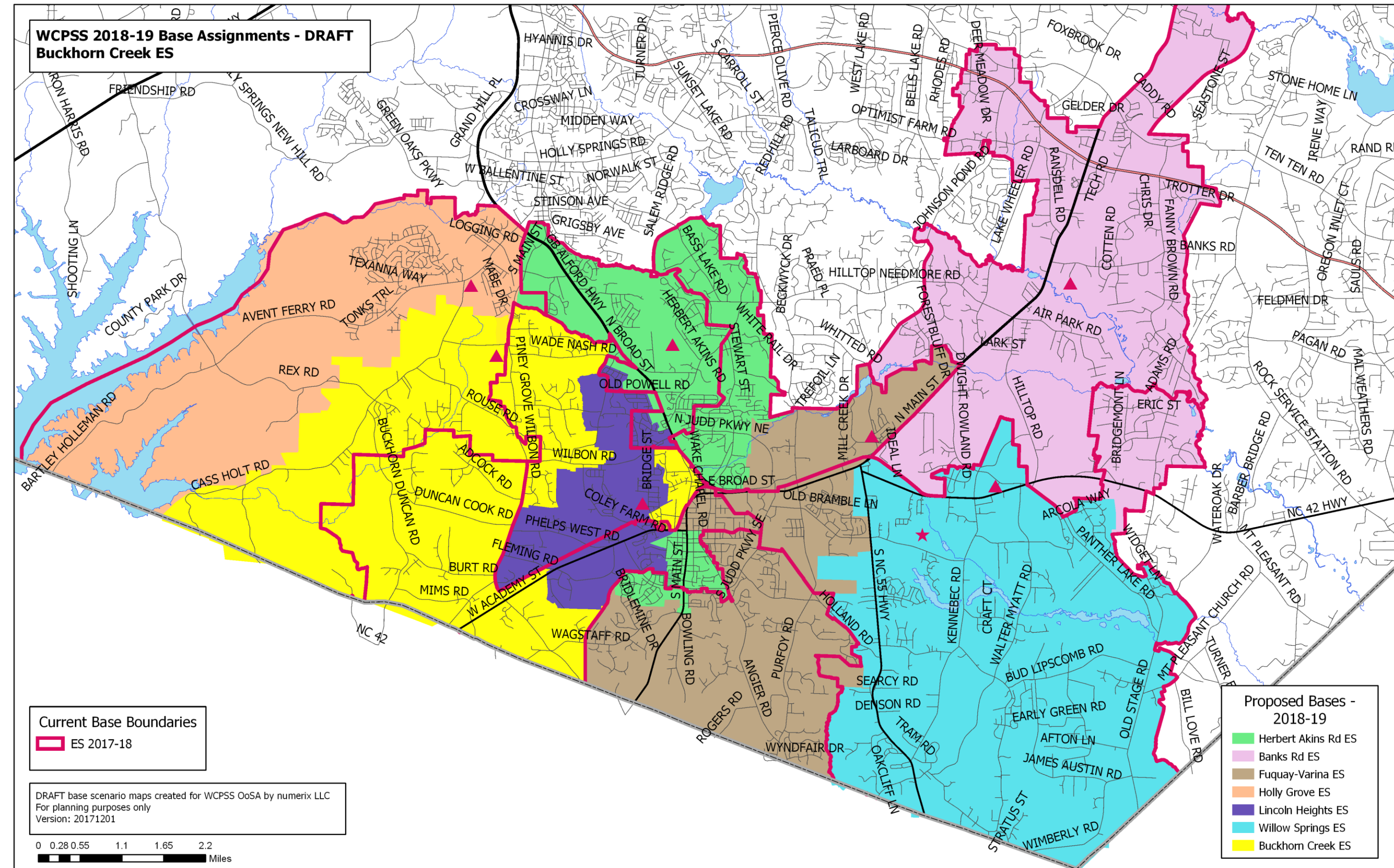


RED = 2017-18 ES Base Boundary

New School – Buckhorn Creek ES (2018-19) **NEW PROPOSAL**

Staff is proposing:

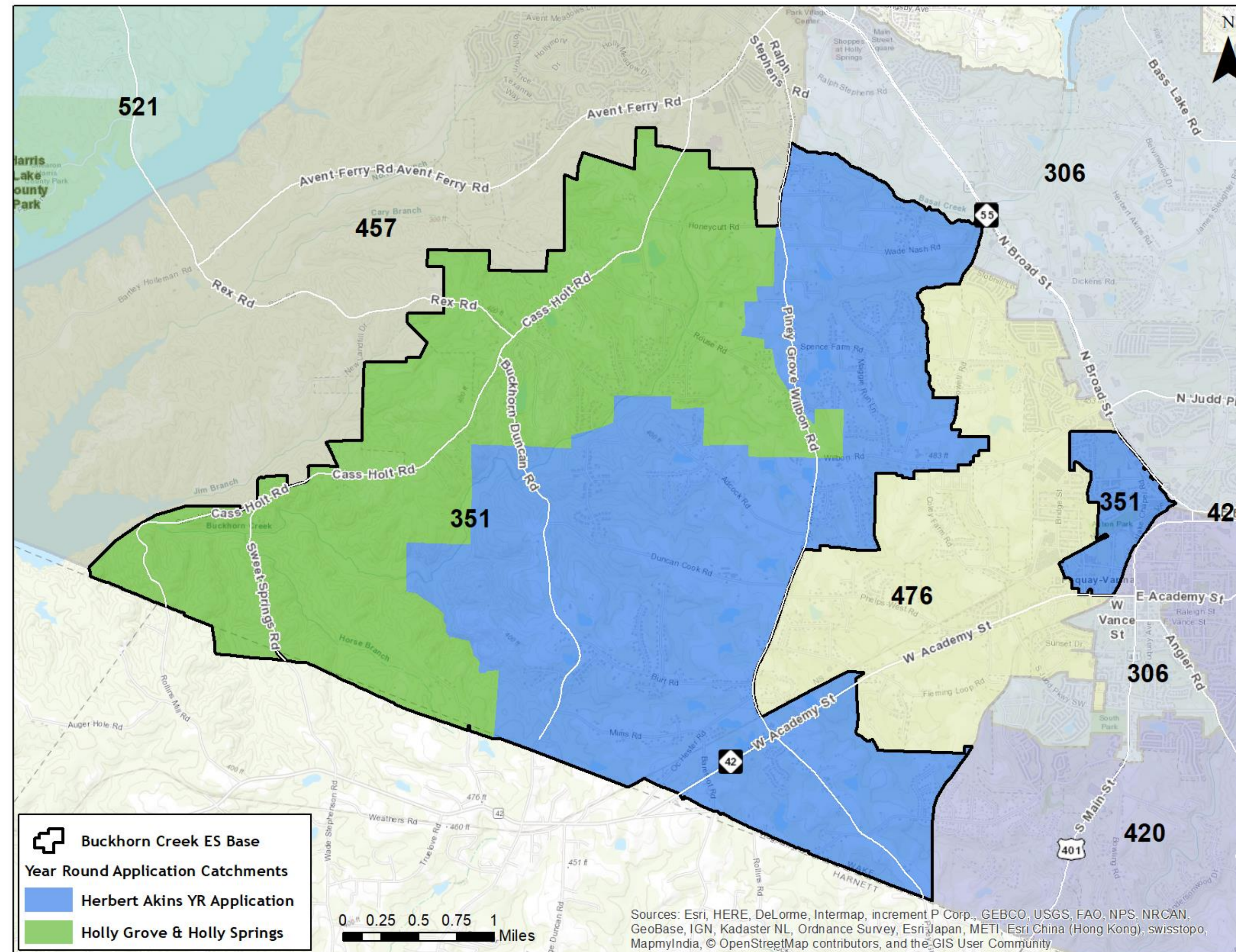
- 1) The school moves forward with opening on the traditional calendar
- 2) A minor change to the northern portion of the attendance area
- 3) Adding Ballentine ES as a year round application school for Buckhorn Creek ES base families that are eligible to apply for Herbert Akins ES



Year Round Application Areas for Buckhorn Creek Elementary

Area in GREEN will apply to both Holly Grove ES and Holly Springs ES

Area in BLUE will apply to both Herbert Akins ES and Ballentine ES



Lincoln Heights ES (476) will apply to Herbert Akins ES and Ballentine ES

New School – Buckhorn Creek ES (2018-19) **NEW PROPOSAL**

2016-17 Base School	Capacity	Capacity w/ Trailers	2018-19 Util	2018-19 Util w/ Trl	2020-21 Util	2020-21 Util w/ Trl	Res	Academic Proficiency (Grades 3-5)			Actual
								Base	Non-Base	Agg	
HERBERT AKINS RD ES	1032	1032	111%	111%	122%	122%	69%	69%	78%	72%	73%
BALLENTINE ES	593	673	91%	80%	95%	83%	62%	69%	63%	67%	69%
BANKS ROAD ES	980	980	82%	82%	92%	92%	64%	68%	77%	70%	70%
FUQUAY-VARINA ES	506	806	184%	115%	193%	121%	66%	61%	68%	63%	64%
HOLLY GROVE ES	902	962	147%	138%	162%	152%	83%	84%	85%	84%	85%
LINCOLN HEIGHTS ES	528	528	96%	96%	102%	102%	61%	36%	36%	36%	37%
WILLOW SPRINGS ES	515	835	235%	145%	254%	156%	75%	80%	86%	81%	82%
BUCKHORN CREEK ES (E45)											
	5056	5816	128%	111%	139%	120%					

2018-19 Base School	Capacity	Capacity w/ Trailers	2018-19 Util	2018-19 Util w/ Trl	2020-21 Util	2020-21 Util w/ Trl	Res	Academic Proficiency (Grades 3-5)		
								Base	Non-Base	Agg
HERBERT AKINS RD ES	1032	1032	114%	114%	125%	125%	69%	67%	78%	71%
BALLENTINE ES	593	673	91%	80%	95%	83%	62%	69%	63%	67%
BANKS ROAD ES	980	980	93%	93%	103%	103%	66%	69%	77%	71%
FUQUAY-VARINA ES	506	806	164%	103%	165%	103%	71%	68%	68%	68%
HOLLY GROVE ES	902	962	125%	117%	136%	127%	82%	84%	85%	84%
LINCOLN HEIGHTS ES	528	528	121%	121%	129%	129%	64%	64%	36%	47%
WILLOW SPRINGS ES	515	835	184%	114%	206%	127%	74%	79%	86%	81%
BUCKHORN CREEK ES (E45)	662	662	76%	76%	84%	84%	69%	65%	n/a	n/a
	5718	6478	117%	103%	126%	111%				

PROFICIENCY LEGEND:

Res = Mean proficiency of students residing in base

Base = Mean proficiency of base students in base

Non-Base = Mean proficiency of non-base students

Agg = Aggregate mean proficiency of base and non-base students

Actual = Reading/English proficiency by school

Grandfathering Rules

Elementary School and Middle School Students

- To utilize new school capacity and meet State mandated class-size reduction for grades K-3:
 - Elementary school and middle school students who experience an assignment change as a result of this enrollment proposal, and are rising into **grades 5 and 8**, are eligible to request a **transfer** to “grandfather” at their current assignment. These requests will be approved.
 - Grandfather requests can be made through the School Transfer process and grandfathered students will **not receive district transportation**.
 - **Siblings of eligible grandfathered students will be eligible to grandfather for one (1) year only with their rising 5th grade, or 8th grade sibling.**

Next Steps

- Board approval of the WCPSS Enrollment Plan for 2018-2019 during the December 19, 2017 Board of Education Meeting.
- January/February staff plans to continue discussions regarding the Calendar Alignment proposal in preparation for the 2019-2020 Enrollment Plan proposal.