

## Advancing qPCR Together

The CFX96 Touch Real-Time PCR System meets all your real-time PCR needs — whether you are running your first experiment or analyzing complex gene expression studies. With five-target detection, industry-leading stand-alone functionality, unsurpassed thermal cycler performance, and easy-to-use software, the CFX96 Touch System has been designed to advance your qPCR.

The CFX96 Touch Real-Time PCR System makes it easy for you to:

- Start doing experiments right away with factory-calibrated optics and minimal setup
- Incorporate real-time PCR into your laboratory with a compact footprint and the ability to set up runs and view data traces in real time on the integrated LCD touch screen
- Fit experiments into your schedule by shortening run times with fast thermal cycling
- Save research time by optimizing experiments in a single run using a thermal gradient
- Conserve your samples and reagents with true 5-target multiplexing and optimal quantitative results using sample volumes as low as 10  $\mu$ l

Visit [bio-rad.com/qPCRSystems](https://www.bio-rad.com/qPCRSystems) for more information.



## Simplicity through Innovation

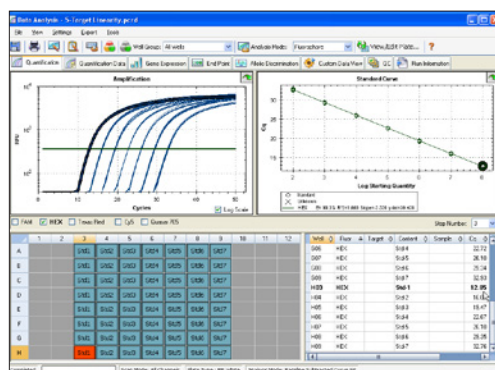
The CFX96 Touch System is built on the Bio-Rad C1000 Touch Thermal Cycler. The system incorporates innovative optical technologies with long-lasting LEDs and solid-state components to provide maximal reliability and flexibility.

- Scanning optics read each well individually with high sensitivity and no cross talk to deliver optimal quantitative results
- Multiple data acquisition modes, including a fast scan option for SYBR® Green I or EvaGreen® users, allow a run to be tailored to suit the application
- Touch screen enables rapid run setup and viewing of data traces in real time
- Several control configurations are available for experiments — run a stand-alone system without a computer or up to 4 instruments from 1 computer

## Software Solutions

CFX Maestro Software offers tools that simplify real-time PCR for every researcher. Start experiments in no time following the Startup Wizard and the intuitive experiment setup. Enter or edit well information before, during, or after a run. You can analyze data when and where you want by receiving an email with an attached data file when a run is completed. When data are in hand, use the comprehensive data analysis tools to take the guesswork out of analyzing results for any real-time PCR application.

- CFX Maestro Software lets you perform gene expression analysis using multiple reference genes and individual reaction efficiencies
- Precision Melt Analysis Software lets you genotype samples based on their thermal denaturation properties
- Data can be imported into qbase+ Software for independent analysis of gene expression results with proven solutions for quality control, normalization, and inter-run calibration



CFX Maestro Software data analysis module.

## Ordering Information

Catalog #	Description
<b>Instruments</b>	
1855196	<b>CFX96 Touch Real-Time PCR System with Starter Package</b> , includes C1000 Touch Thermal Cycler Chassis, CFX96 Optical Reaction Module, CFX Maestro Software, qbase+ Software license, cables, reagents, consumables
1845096	<b>CFX96 Optical Reaction Module for Real-Time PCR Systems with Starter Package</b> , 96-well optical module, package includes CFX Maestro Software, qbase+ Software license, cables, reagents, consumables, for use with C1000 Touch Thermal Cycler Chassis
1814000	<b>PX1 PCR Plate Sealer</b> , includes heat sealing instrument
1845075	<b>CFX Automation System II</b> , includes plate handler and barcode scanner, mounting plate, automation software
<b>Software</b>	
	All software for Windows unless otherwise noted.
12013758	<b>CFX Maestro Software 2.0</b>
12004128	<b>CFX Maestro Software for Mac</b>
12012832	<b>CFX Maestro Software 2.0</b> , Security Edition, 1 license
12013028	<b>CFX Maestro Software 2.0</b> , Security Edition, 5 licenses
12012834	<b>CFX Maestro Software 2.0</b> , Chinese Edition
12012833	<b>CFX Maestro Software 2.0</b> , Russian Edition
1845025	<b>Precision Melt Analysis Software</b> , 2 user licenses, data analysis software, 2 HASP HL keys, calibration kit
<b>Reagents</b>	
1708841	<b>iScript Reverse Transcription Superscript</b> , 400 µl (4 x 100 µl vials), 100 x 20 µl reactions
1725035	<b>iScript gDNA Clear cDNA Synthesis Kit</b> , 100 x 20 µl reactions
1725038	<b>iScript Advanced cDNA Synthesis Kit</b> , 100 x 20 µl reactions
1708891	<b>iScript cDNA Synthesis Kit</b> , 100 x 20 µl reactions
1725271	<b>SsoAdvanced Universal SYBR® Green Superscript</b> , 5 ml (5 x 1 ml vials), 500 x 20 µl reactions
1725281	<b>SsoAdvanced Universal Probes Superscript</b> , 5 ml (5 x 1 ml vials), 500 x 20 µl reactions
1725160	<b>SsoAdvanced PreAmp Superscript</b> , 1.25 ml (1 x 1.25 ml vial), 50 x 50 µl reactions
12010220	<b>Reliance One-Step Multiplex Superscript</b> , 5 ml (5 x 1 ml vials), 1,000 x 20 µl reactions
12010221	<b>Reliance One-Step Multiplex Superscript</b> , 10 ml (2 x 5 ml vials), 2,000 x 20 µl reactions
1725120	<b>iTaq Universal SYBR® Green Superscript</b> , 2 ml (2 x 1 ml vials), 200 x 20 µl reactions
1725151	<b>iTaq Universal SYBR® Green One-Step Kit</b> , 500 x 20 µl reactions
1725130	<b>iTaq Universal Probes Superscript</b> , 2 ml (2 x 1 ml vials), 200 x 20 µl reactions
1725141	<b>iTaq Universal Probes One-Step Kit</b> , 500 x 20 µl reactions
<b>Consumables</b>	
HSP9601	<b>Hard-Shell Low-Profile 96-Well Skirted PCR Plates</b> , white shell/clear well, 50
MSB1001	<b>Microseal 'B' Adhesive Seals</b> , optically clear, 100
MSF1001	<b>Microseal 'F' PCR Plate Seals</b> , foil, pierceable, 100

BIO-RAD, HARD-SHELL, and MICROSEAL are trademarks of Bio-Rad Laboratories, Inc. in certain jurisdictions. EvaGreen is a trademark of Biotium, Inc. Bio-Rad Laboratories, Inc. is licensed by Biotium, Inc. to sell reagents containing EvaGreen Dye for use in real-time PCR, for research purposes only. SYBR is a trademark of Thermo Fisher Scientific Inc. Bio-Rad Laboratories, Inc. is licensed by Thermo Fisher Scientific Inc. to sell reagents containing SYBR Green I for use in real-time PCR, for research purposes only. Hard-Shell Plates are covered by one or more of the following U.S. patents or their foreign counterparts owned by Eppendorf AG: U.S. Patent Numbers 7,347,977; 6,340,589; and 6,528,302. All trademarks used herein are the property of their respective owner.



Bio-Rad's PCR reagents and analytical instruments are manufactured under an ISO 13485:2016 certified Quality Management System and are quality control tested to ensure consistent product performance you can trust.



**Bio-Rad  
Laboratories, Inc.**

Life Science  
Group

Website bio-rad.com USA 1 800 424 6723 Australia 61 2 9914 2800 Austria 00 800 00 24 67 23 Belgium 00 800 00 24 67 23 Brazil 4003 0399 Canada 1 905 364 3435 China 86 21 6169 8500 Czech Republic 00 800 00 24 67 23 Denmark 00 800 00 24 67 23 Finland 00 800 00 24 67 23 France 00 800 00 24 67 23 Germany 00 800 00 24 67 23 Hong Kong 852 2789 3300 Hungary 00 800 00 24 67 23 India 91 124 4029300 Israel 0 3 9636050 Italy 00 800 00 24 67 23 Japan 81 3 6361 7000 Korea 82 2 3473 4460 Luxembourg 00 800 00 24 67 23 Mexico 52 555 488 7670 The Netherlands 00 800 00 24 67 23 New Zealand 64 9 415 2280 Norway 00 800 00 24 67 23 Poland 00 800 00 24 67 23 Portugal 00 800 00 24 67 23 Russian Federation 00 800 00 24 67 23 Singapore 65 6415 3188 South Africa 00 800 00 24 67 23 Spain 00 800 00 24 67 23 Sweden 00 800 00 24 67 23 Switzerland 00 800 00 24 67 23 Taiwan 886 2 2578 7189 Thailand 66 2 651 8311 United Arab Emirates 36 1 459 6150 United Kingdom 00 800 00 24 67 23

