

Seams Like a Dream
QUILT DESIGNS

MAKING IT TOTE BAG

seamslikeadream.shop



SEAMSLIKEADREAM.SHOP

FREE PDF PATTERN

Making It Tote Bag

Yes, you can make this tote!

Fabric amounts based on fabric 40" wide.

Fabric amounts are rounded up to the next 1/8 yard. Get extra if you want to allow for shrinkage or for cutting insurance.

Fabric	Tote Bag
Fabric A- outside bag main print	1/2 yard
Fabric B- outside bag accent strip and handles	3/8 yard
Fabric C- outside bag top strip	1/4 yard**
Fabric D - lining	1/2 yard
Lightweight Fusible Interfacing - optional	1 1/2 yards of 20" wide fusible

** you only need a piece of fabric 4 1/2" x 13" for Fabric C- so if you are using scraps, just look for something at least that size, but if buying yardage getting the 1/4 yard to ensure that you will have enough.

General Instructions:

Read through all directions before beginning. Sew using a 1/4" seam; seam allowances are built into the cutting directions. All pieces are sewn with right sides together (RST) unless otherwise specified. Cutting directions are based on fabric 40" wide- adjust quantity as needed to fit your fabrics. Follow the arrows for pressing suggestions.

I like to add a lightweight fusible interfacing to my bag but it is an optional step. You can make the bag without it or you can add the interfacing to just the outside pieces and skip the step adding the interfacing to the lining pieces. I used Pellon Shape-Flex for my interfacing.

Cutting:

Fabric A - outside bag main fabric, cut:

1 strip 13" x WOF - sub cut into: 1 piece 13" x 9 1/2" for outside bag front
1 piece 13" x 14 1/2" for outside bag back

Fabric B - accent fabric, cut:

1 strip 1 1/2" x WOF - sub cut into: 1 strip 1 1/2" x 13" for outside bag front accent strip
2 strips 5" x WOF for handles

Fabric C - outside bag top strip fabric, cut:

1 strip 4 1/2" x WOF - sub cut into: 1 strip 4 1/2" x 13" for outside bag front top strip

Fabric D - lining fabric, cut:

1 strip 13" x WOF - sub cut into: 2 pieces 13" x 14 1/2" for bag lining

Lightweight Fusible Interfacing - cut:

4 pieces 13" x 14 1/2"

Bag Front

Step 1

Sew together the 3 bag front pieces as shown.

The outside bag front should measure 13" wide x 14 1/2" tall.

Step 2

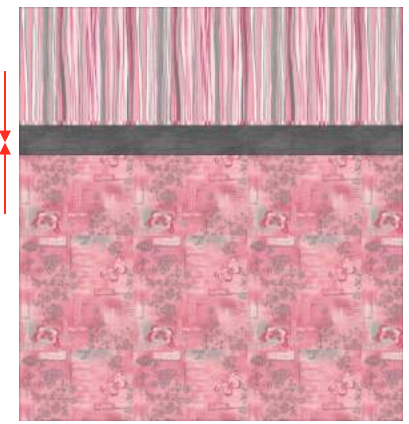
Fuse the lightweight fusible interfacing to the wrong side of the outside front, outside bag back and the 2 lining pieces.

Step 3

Sew the fabric A outside bag back right sides together with the outside bag front along the side seams and across the bottom seam.

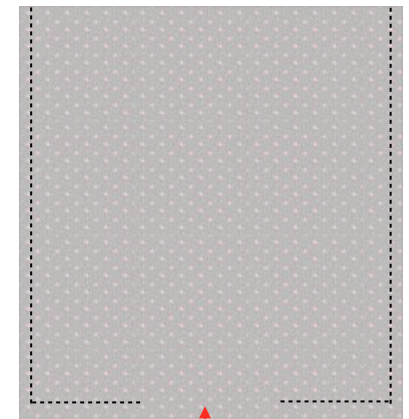
Leave the top open.

Outside bag pieces



Bag Front

Inside bag pieces



leave opening

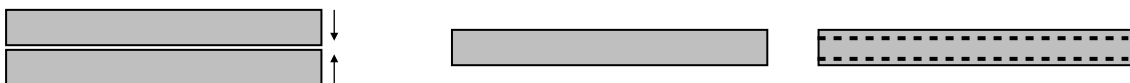
Step 4

Sew the 2 fabric D lining bag pieces right sides together along the side seams and across the bottom seam, **BUT** leave an opening in the bottom seam of about 5". Leave the top open.

Step 5 - handles

Fold the fabric B 5" x WOF strips in half wrong sides together along the long edges. Open them up, fold the sides into the center crease, refold along the center fold and press. Topstitch along both long edges. Cut the handles to about 30.*

***Note:** you may want your handles shorter or longer depending on how tall you are! You may want them cut to only 28" long or up to 32" - 34" long.



Step 6

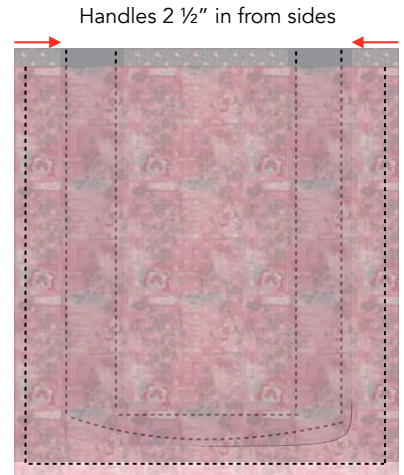
Turn the lining right sides out and tuck into the outside bag section, right sides together. Line up the sides and top edges.

Note: Image to the right does not have the top edges lined up so you can see the lining and the handle placement.

Tuck the handles in between the 2 layers, one on each side of the bag, and line up the raw edges of the bag and the handles. Position the outside edges of the handles about 2 1/2" in from the sides of the bag. Be careful not to twist the handles!

Step 7

Sew the top seam catching the edge of the handles in the seam. Turn the bag right sides out through the opening in the lining. Tuck in the raw edges of the opening in the lining and stitch the opening closed. Tuck the lining inside the bag and adjust the top seam. Topstitch close to the top of the bag.



Happy quilting!

Kate

Fabrics shown are from the **Soulful Shades of Pink** fabric line by Laura Berringer for Marcus Fabrics.
A portion of all sales of Soulful Shades of Pink will be donated to support breast cancer research.

For tips on how to add a pocket or make a flat bottom to your bag, be sure to go to my blog posts on Feb. 14, 2020 and Feb. 21, 2020!

My Blog: seamslikeadream.com

To see Kris Poor's neckroll pattern visit: poorhousequilting.com/blog

To read about Joanne's breast cancer journey and see her quilt pattern visit: fatquartergypsy.com/Lex-Luther-Blog .

Kate Colleran Designs, LLC

seamslikeadream.com

info@seamslikeadream.com

Visit our website to see our whole line of patterns!

Please respect our copyright and **DO NOT** make copies of this pattern for anyone. If your friends like the pattern, encourage them to visit my website and download their own!
Items made from this pattern may not be reproduced for commercial purposes, but feel free to make quilts for your use, for gifts, for a raffle or giveaway or for sale as long as you are not mass producing.