

Does your city have a parking problem?



PARK

IT RIGHT

Shreya Gadepalli



Where does the Sun rise from?

- ☐ EAST
- ☐ WEST

The Sun doesn't rise!!



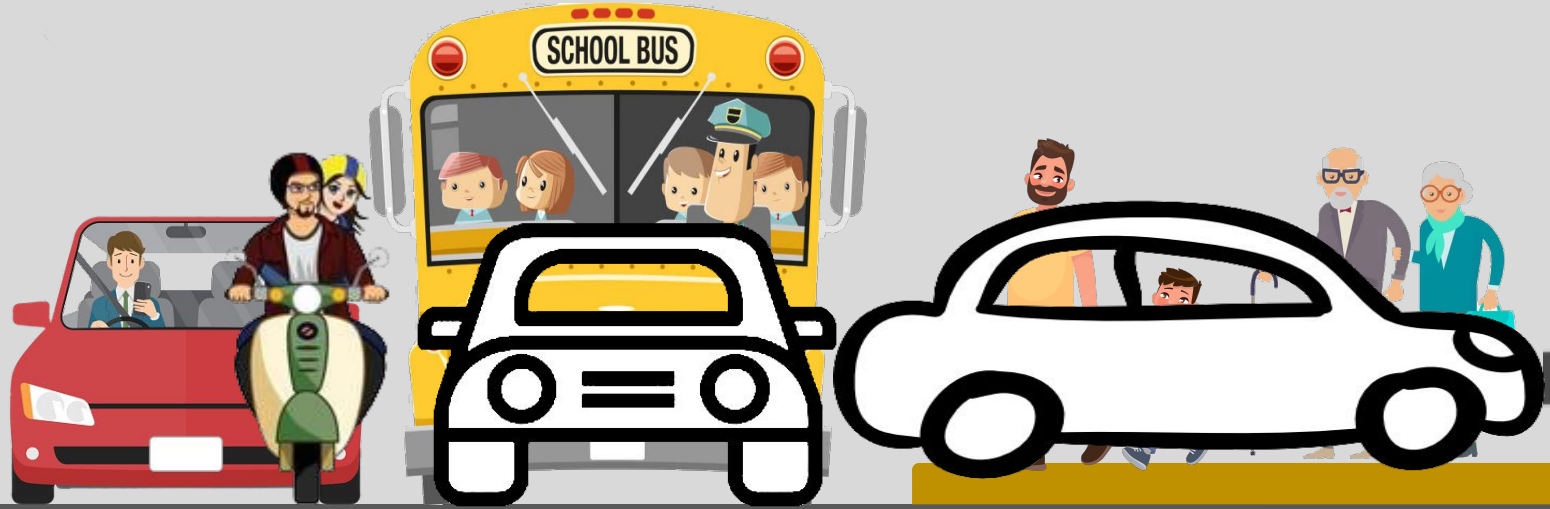
What are streets for?



Travelling across
the city

Walking and
enjoying the city

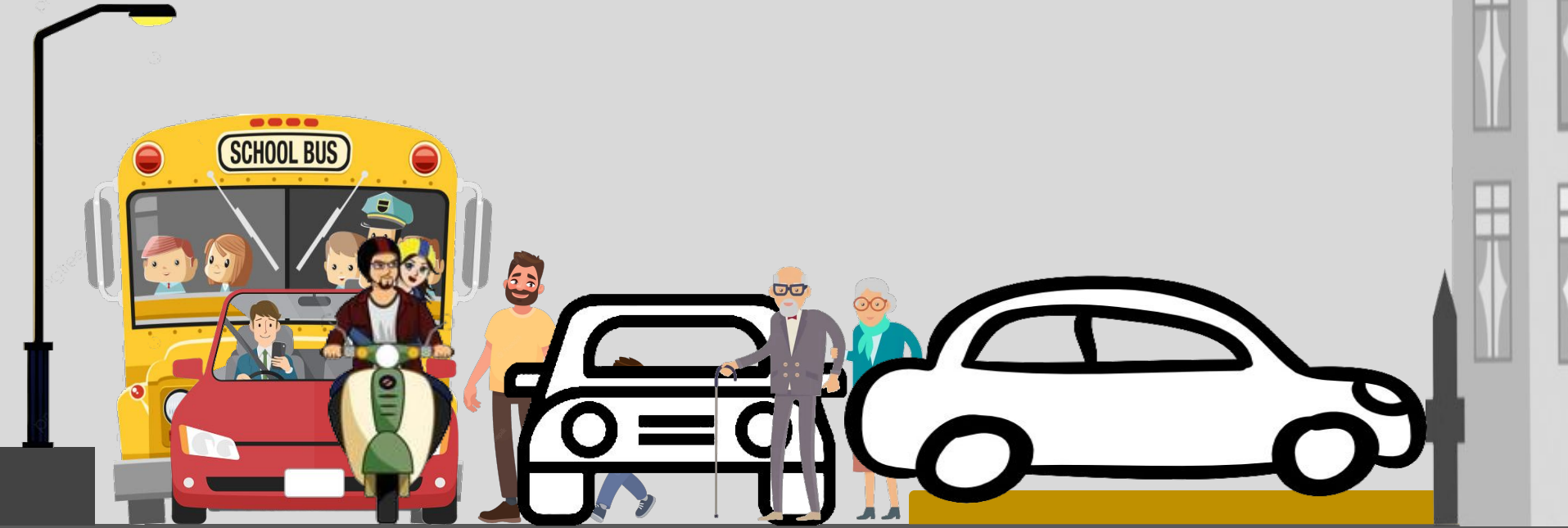
A parking flood!



Parking is also
blocking traffic

Parking has eaten
away footpaths

TOTAL BREAKDOWN

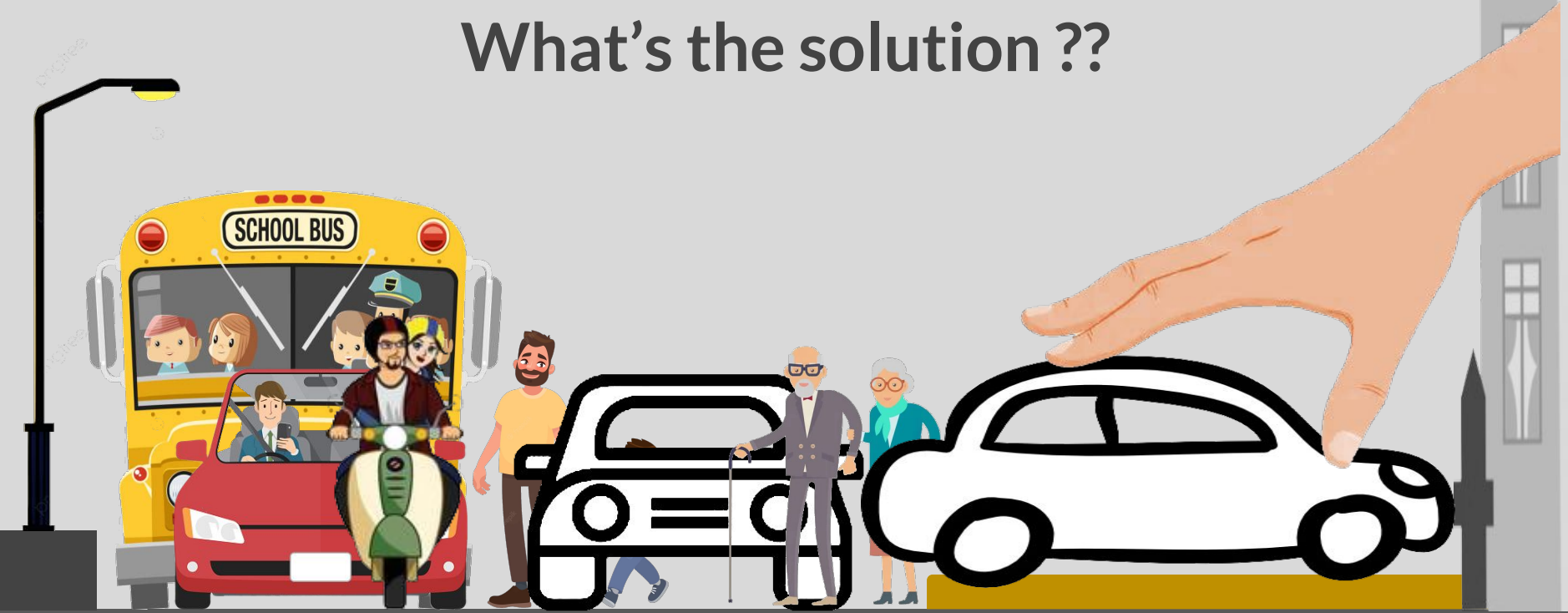


Vehicles are stuck
in a jam forever

Walking has
become a
nightmare

No place is left for
parking also!

What's the solution ??



Move parking off street



RECLAIM STREETS FOR PEOPLE

Building more parking can solve
the problem



More parking in buildings (residential & commercial) ...



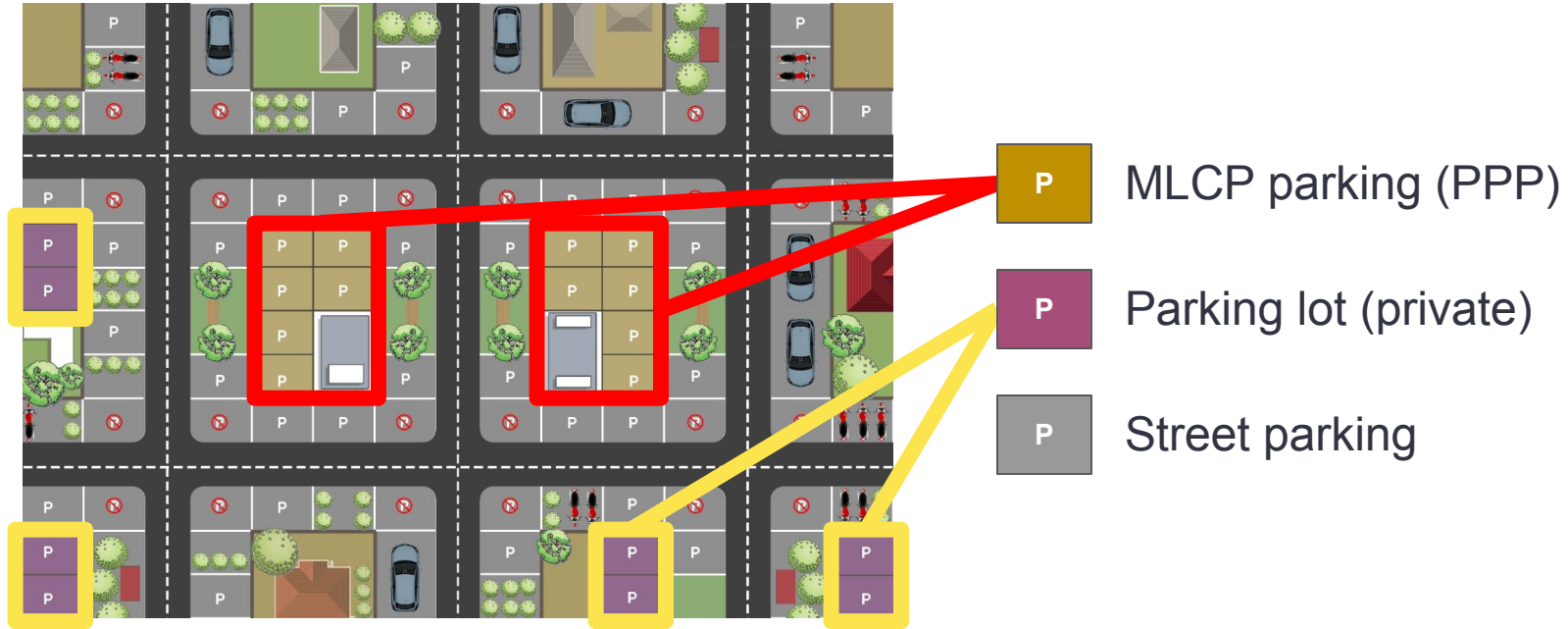
...isn't stopping parking spillover onto streets

MLCPs remain unused ...
... and haphazard parking continues on the streets

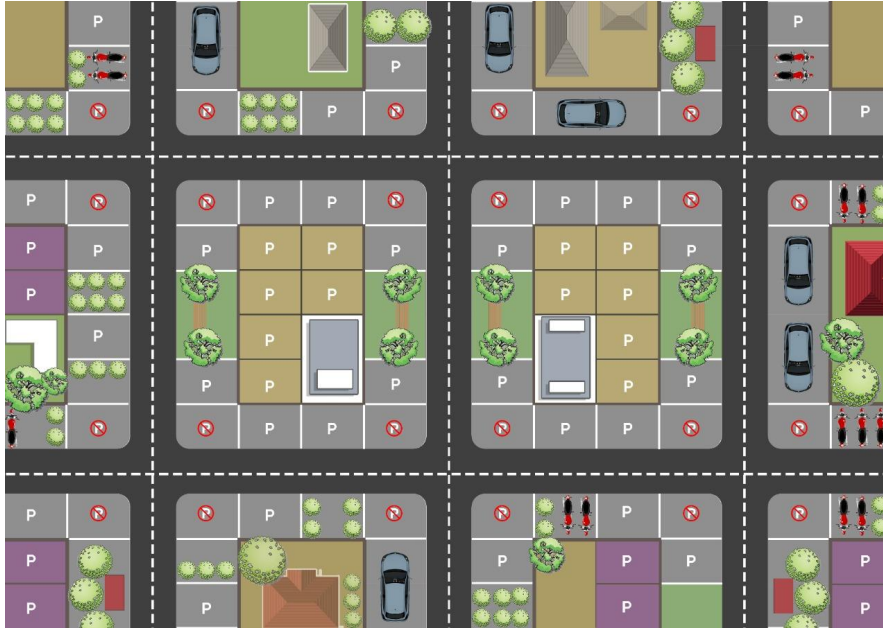


Why should I park in multi-level parking when no one stops me from parking anywhere on the street?





PARKING GAME!!!



PARKING GAME!!!

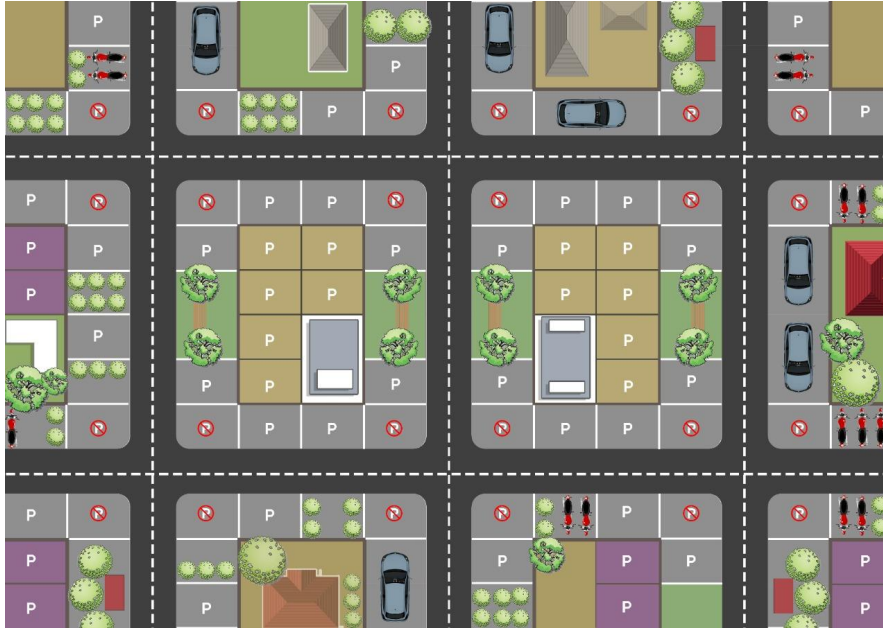


FIRST ROUND

-  MLCP parking = Rs.20/hr
-  Parking lot = Rs.10/hr
-  Street parking = Zero
-  Fine = Rs.1000 (poor enforcement)



PARKING GAME!!!



SECOND ROUND



MLCP parking = Rs.20/hr



Parking lot = Rs.10/hr



Street parking = Rs.30/hr



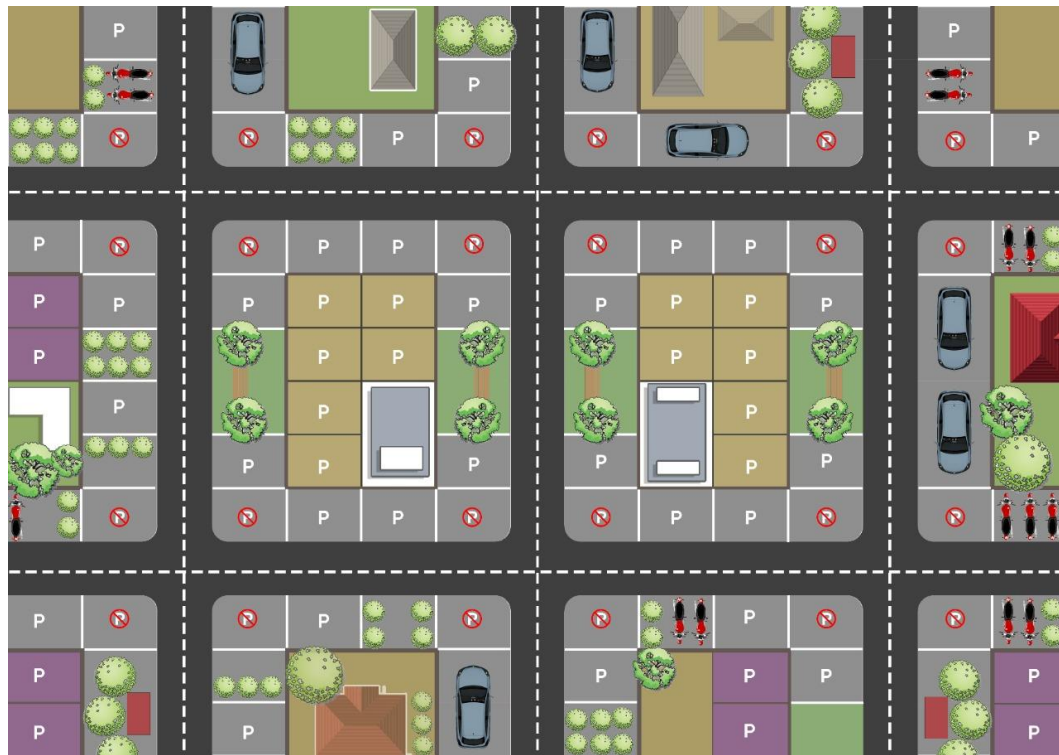
Fine = Rs.500 (good enforcement)

What do we learn from the game?

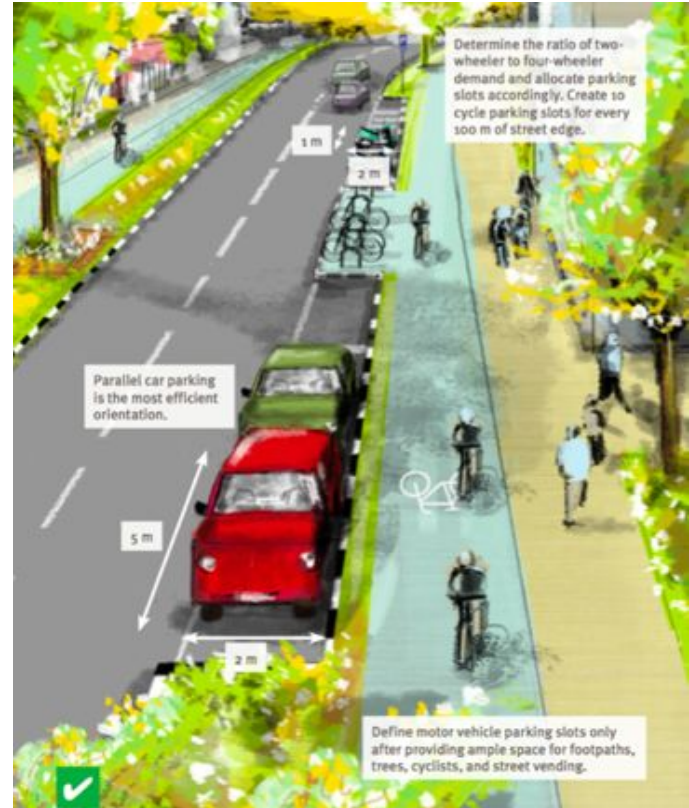
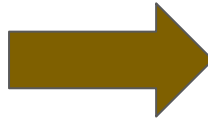
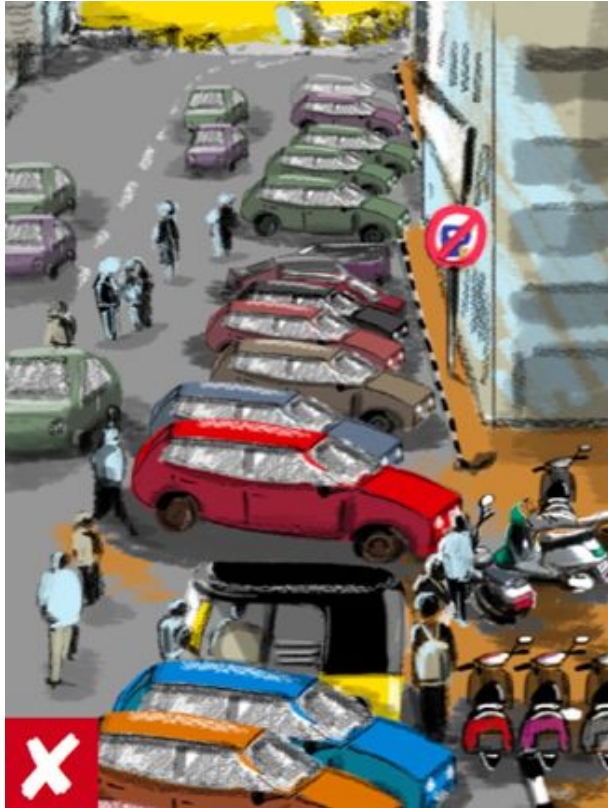
When parking on streets is charged & enforced:

- MLCPs & parking lots are better utilised
- Long term parkers vacate prime parking on streets
- Short term parkers don't waste time finding parking

All of this even without any new public transport!



FIRST, Demarcate, Price & Control Parking on Streets



Government must
build/subsidize parking

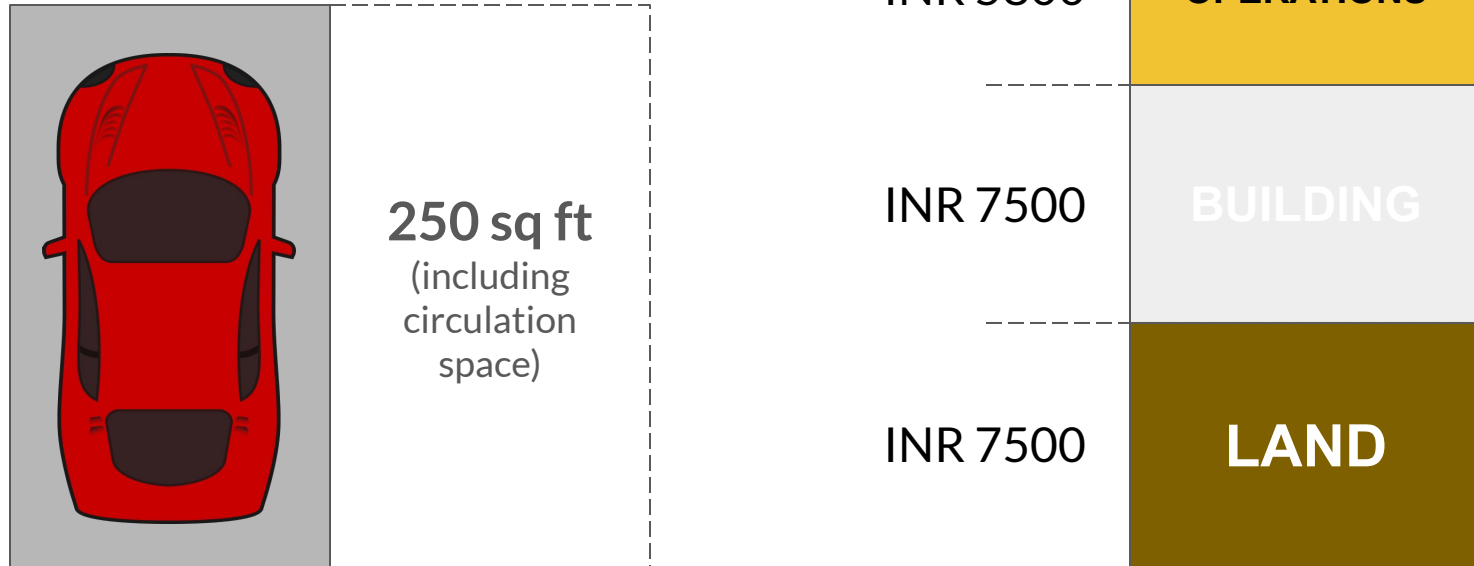


How Much Does Parking Cost?

Full market cost of ONE car parking in an MLCP

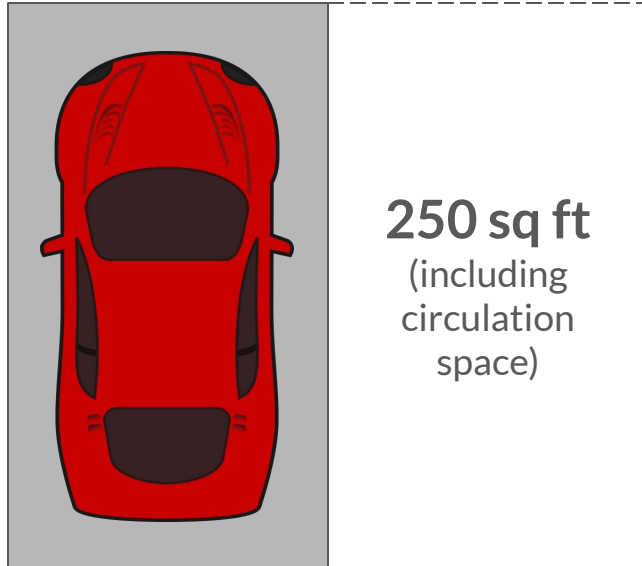


Rs. 20800/month/car

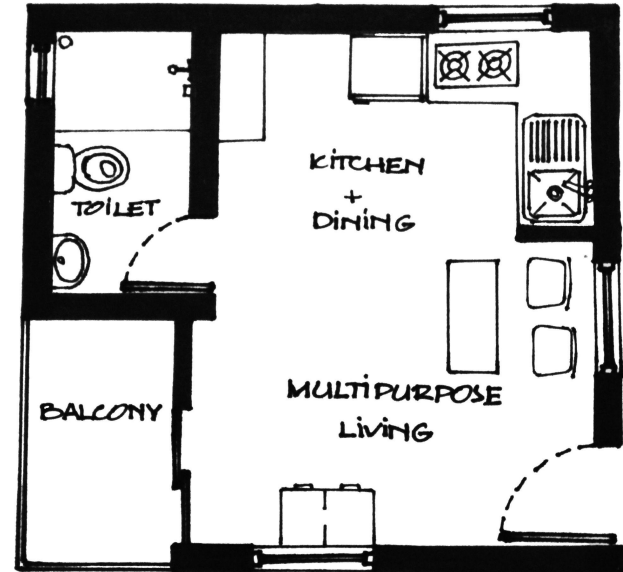


Options Before Us

ONE car parking spot?



Home for a family of FOUR?



What is the goal of parking management?

Present Approach

Parking is made plentiful
and cheap for everyone to
park



The Right Approach

Parking charges are raised
gradually so that parking
becomes a financially viable
business

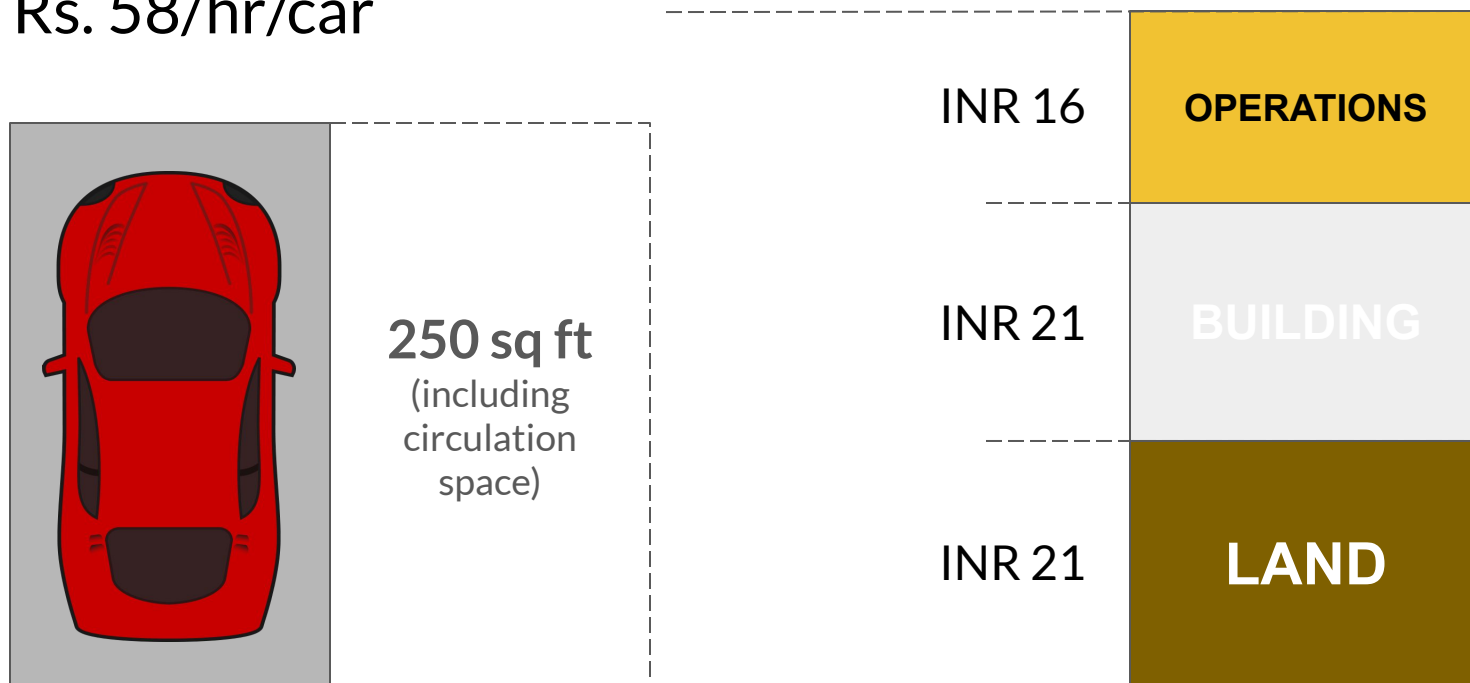


How Much Does Parking Cost?

Full market cost of ONE car parking in an MLCP



Rs. 58/hr/car

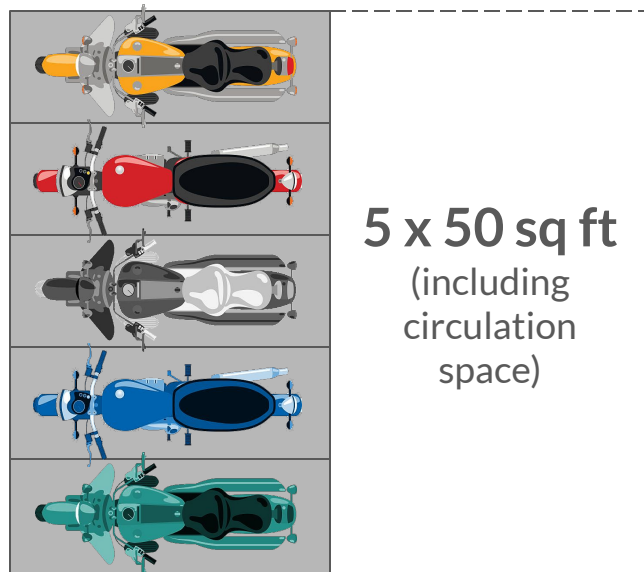


How Much Does Parking Cost?

Full market cost of ONE car parking in an MLCP



Rs. 12/hr/2W



INR 3

OPERATIONS

INR 4

BUILDING

INR 4

LAND

Easy parking will encourage the
use of public transport



Options Before Us

Multi-level parking
for 250 cars?



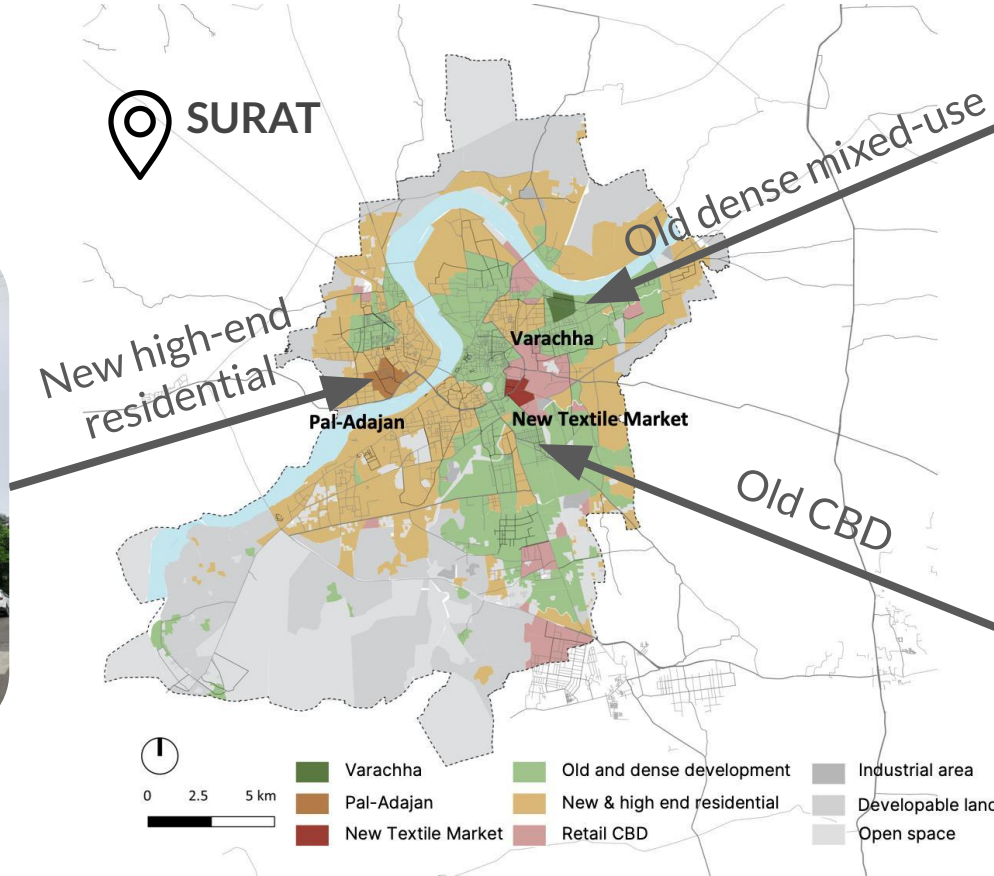
15 AC buses
to serve 10000 people daily?



More Parking = More Private Vehicle Use >> **ANTI-TOD**



Parking Study | Area Typologies



Willingness to Pay



4-WHEELER

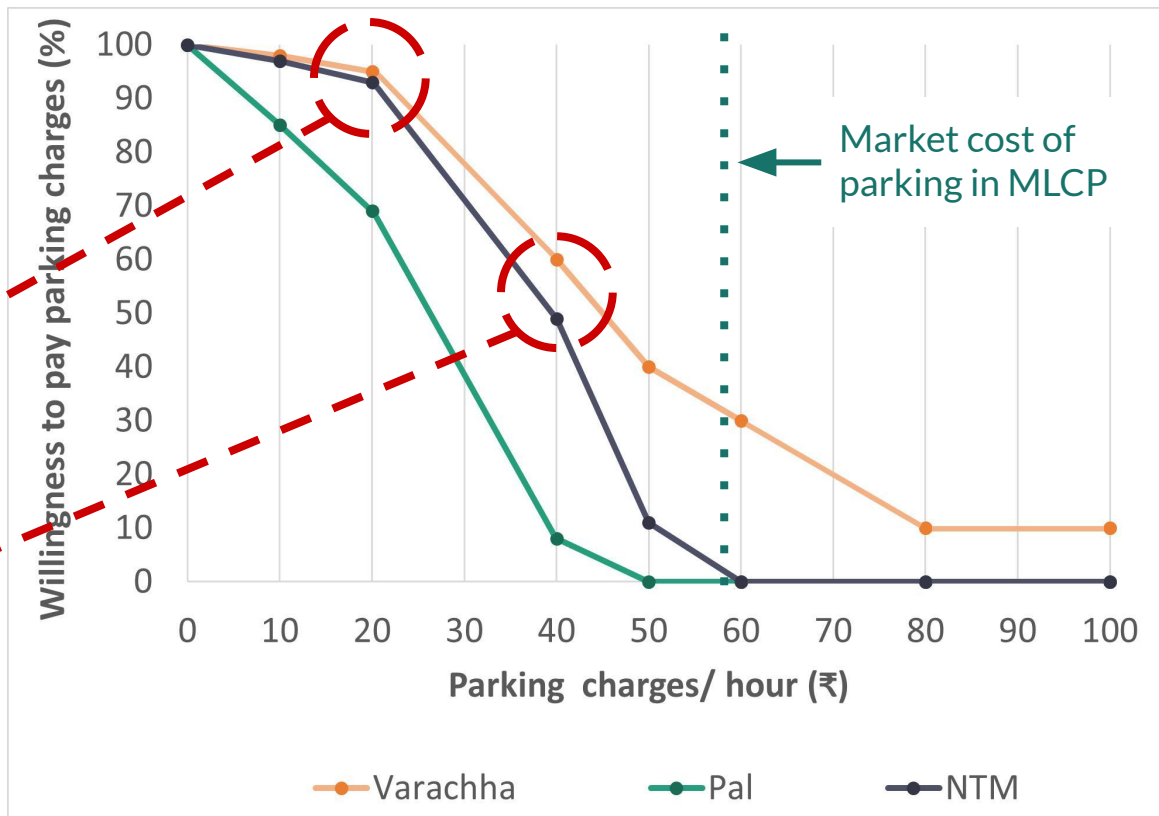


SHORT TERM

Areas with limited parking
have high willingness to pay
(Varachha, NTM)

More than 90% willing to pay
Rs.20/hr (2X of existing fee)
(Varachha, NTM)

Half are willing to pay
Rs.40/hr
(Varachha, NTM)



Willingness to Pay



2-WHEELER

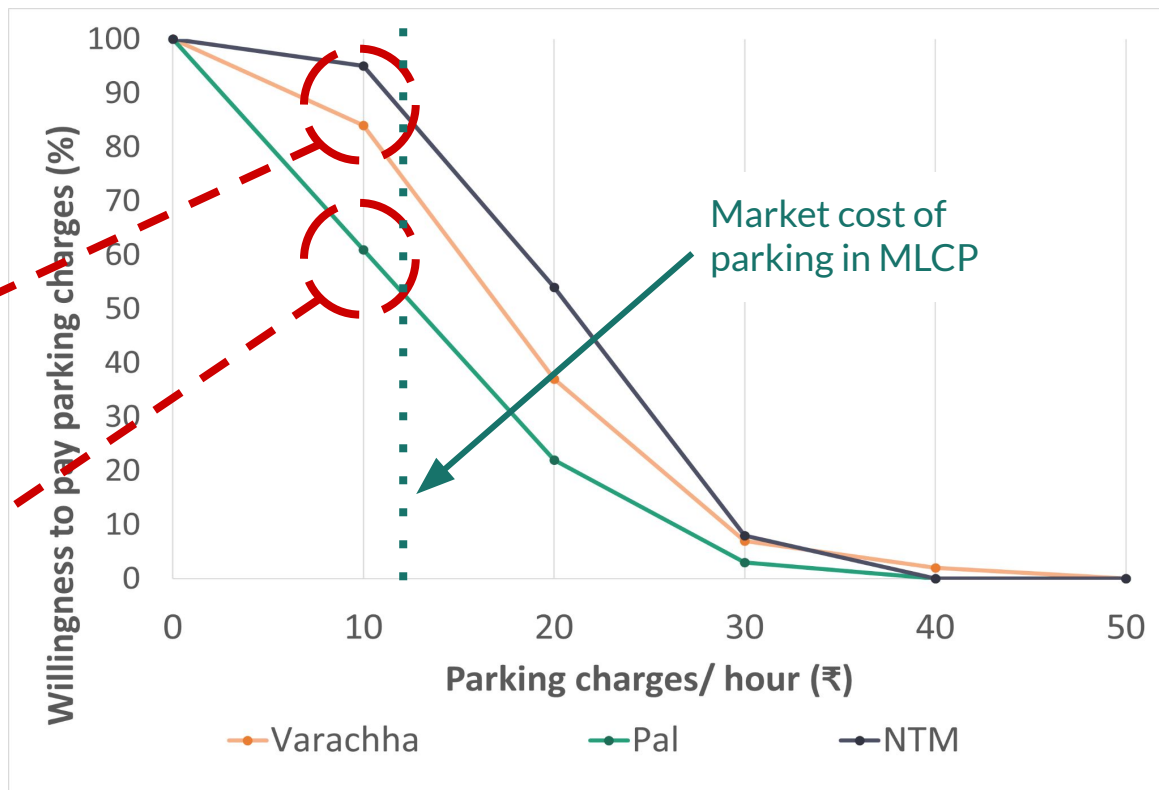


SHORT TERM

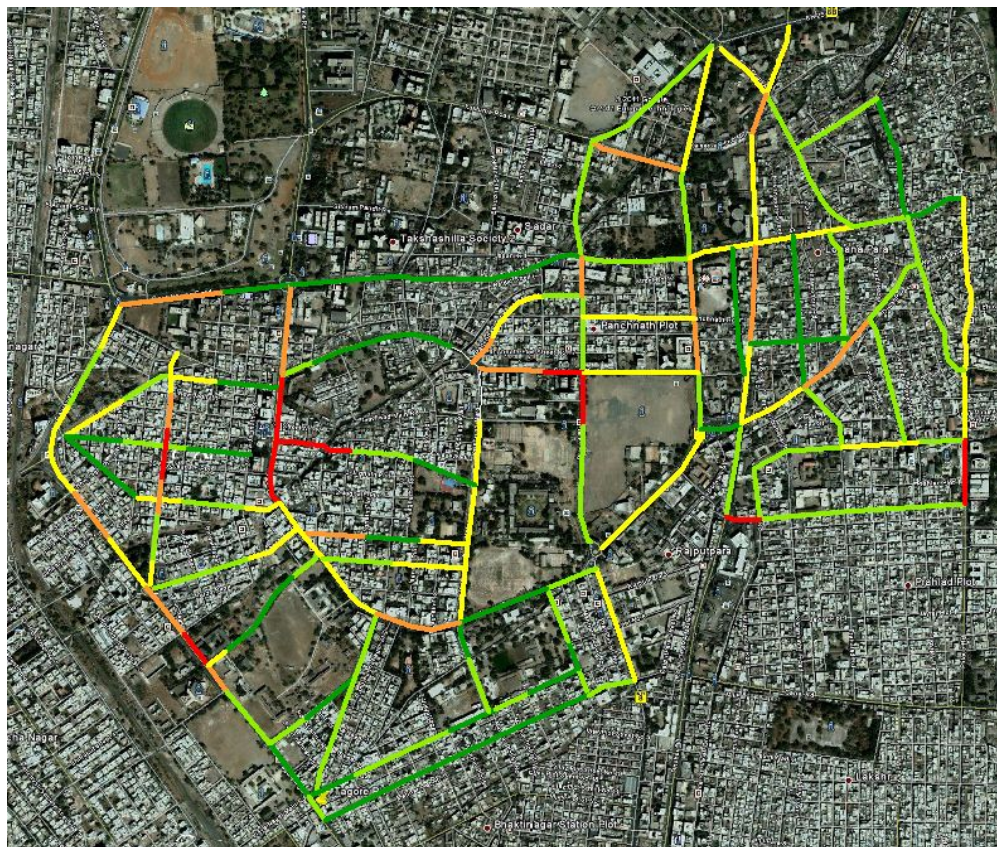
Areas with limited parking
have high willingness to pay
(Varachha, NTM)

More than 80% willing to pay
Rs.10/hr (2X of existing fee)
(Varachha, NTM)

Lower willingness to pay in
areas with excess parking
(Pal-Adajan)



Price parking based on demand on each street section



  **40 rs/hr***

 **20 rs/hr***

  **Free!**

parking_map by occupancy



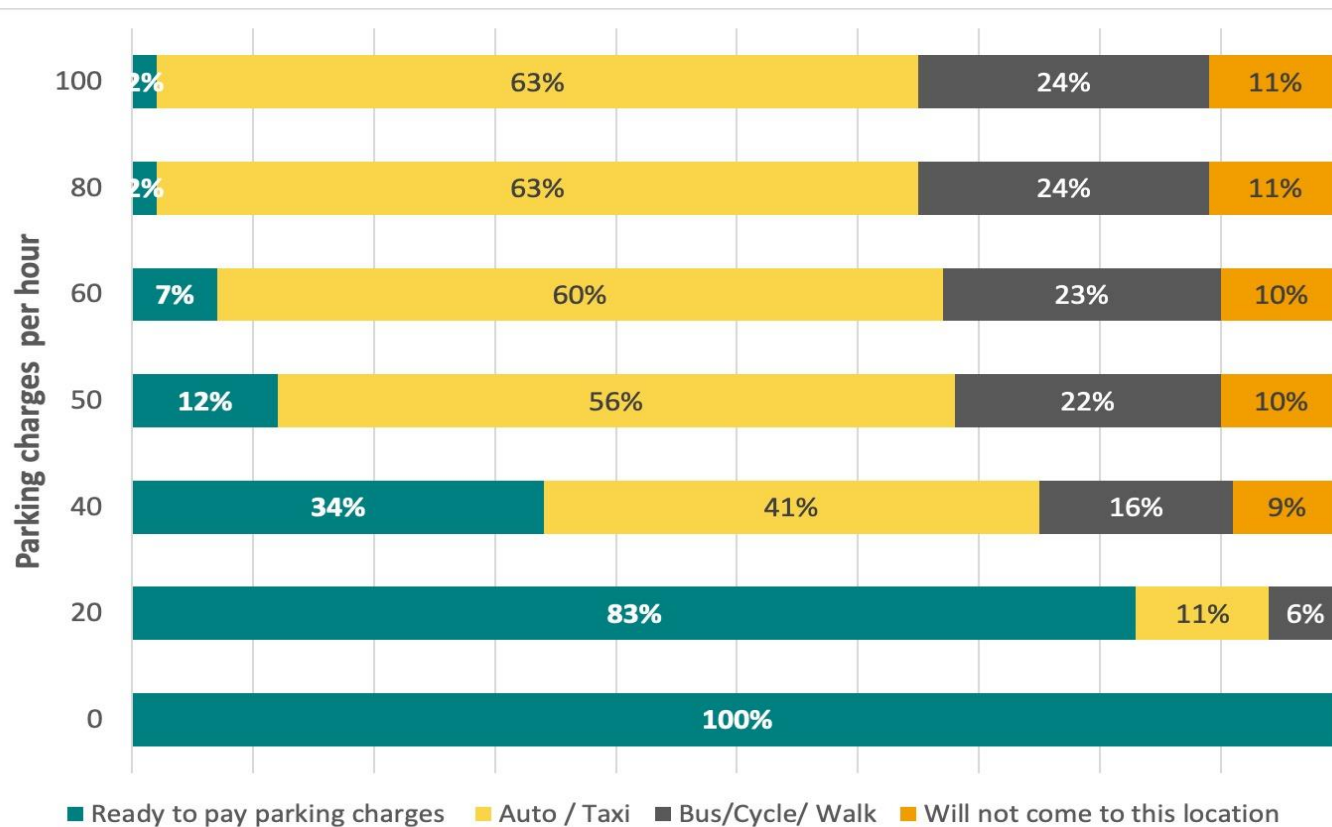
* Indicative starting price subject to revision

What would you do?

- There is no place for parking
- Parking is more expensive that you are willing to pay



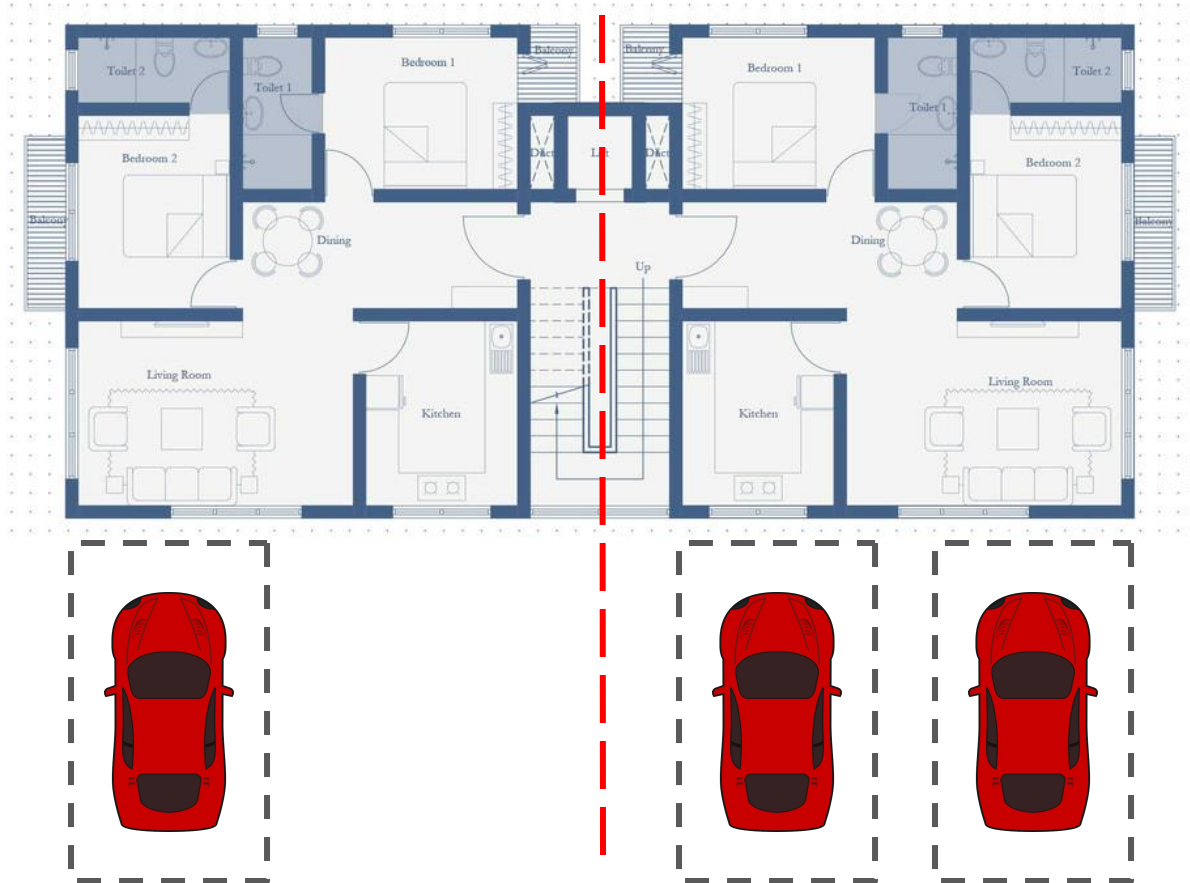
Willingness to Shift to Alternatives



Parking Study | Demand & Supply

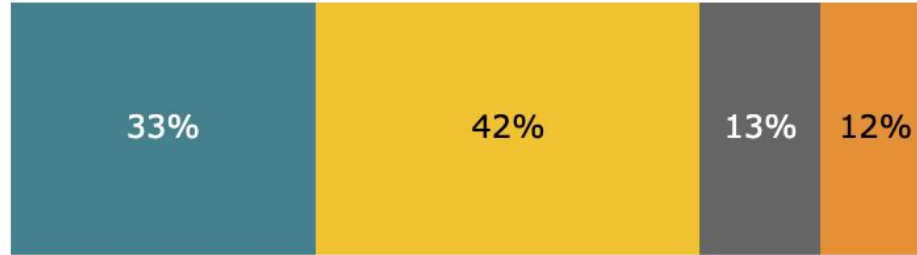


The Tale of Two Apartments



What if Parking was Sold Separately?

15%
additional
cost for
parking



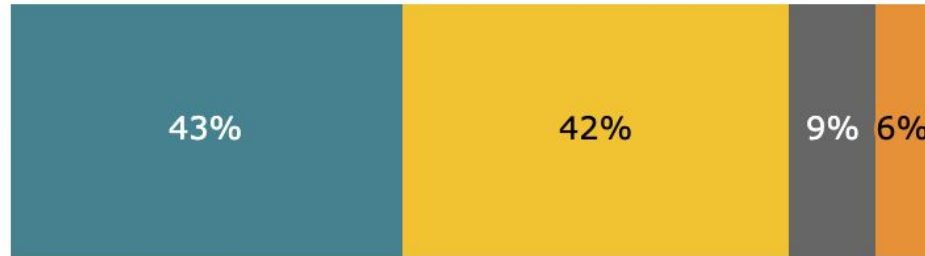
■ Buy the home of my liking—WITHOUT parking—and live a car-free life

■ Go to a cheaper but less desirable location to buy a house of the size I want as well as parking

■ Buy a smaller home (like one less bedroom) to be able to purchase parking for my car

■ Increase my budget (by 15% per car) to get the house of my choice as well as parking

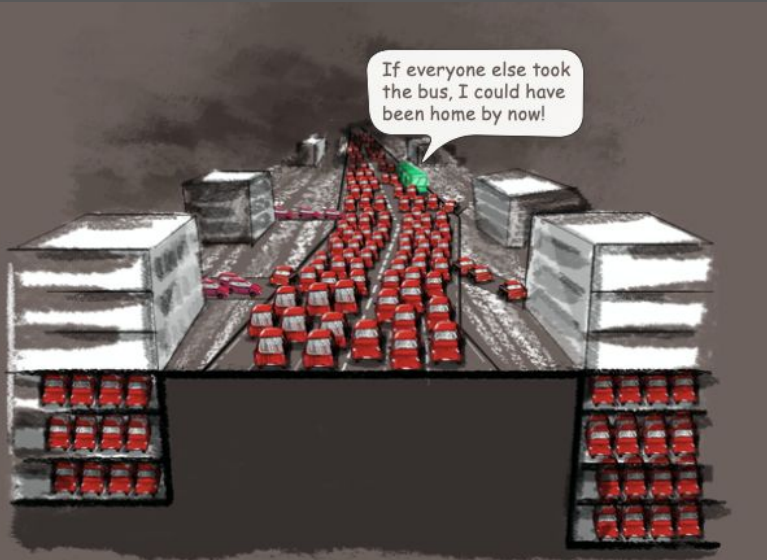
25%
additional
cost for
parking



We cap FSI for living space but allow unlimited parking!

How about capping parking and allowing more space for living?

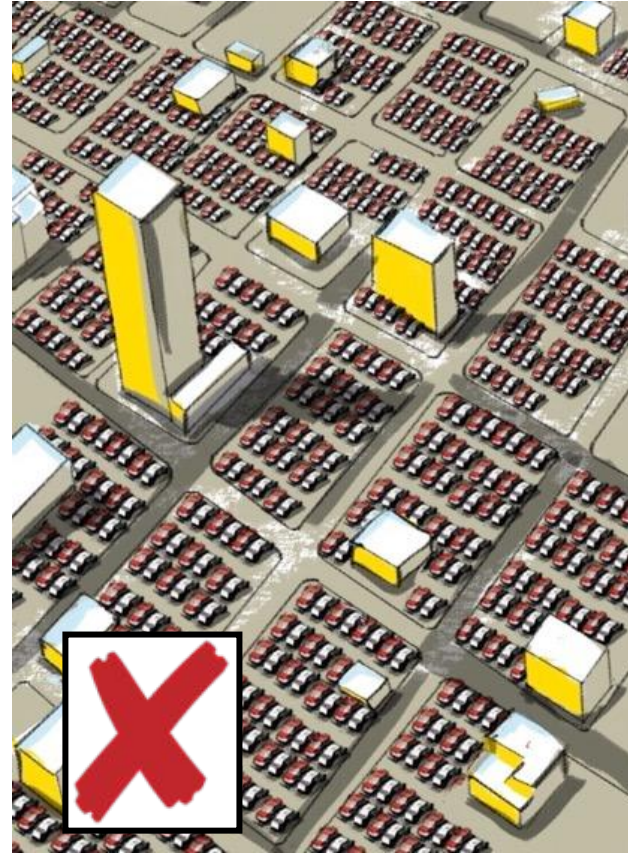
If everyone else took the bus, I could have been home by now!



We can all get to work faster on this bus rapid transit system!



Let us create PARKS, not parking!



PARKING **DEMYSTIFIED**

Shreya Gadepalli

