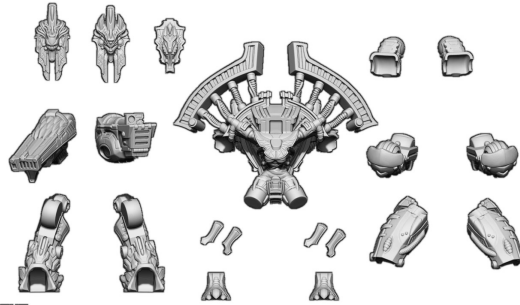


ASSEMBLY GUIDE FOR THE IE MECHA

1. IE MECHA'S PARTS



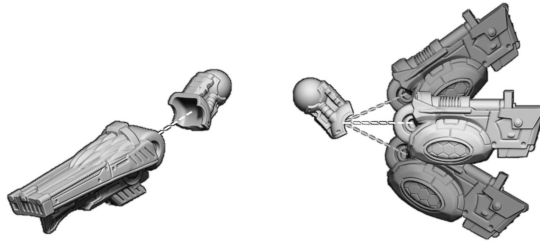
IE MECHA
(20 PARTS)

2. IE MECHA - ASSEMBLING THE LEGS



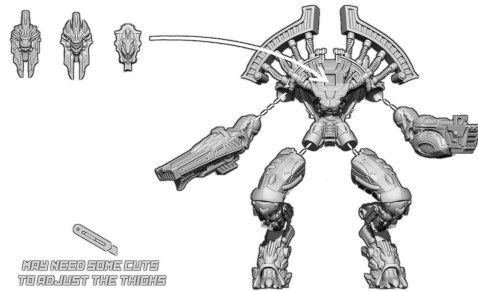
ASSEMBLE THE SIX PARTS OF THE LEGS AS SHOWN ON THE PICTURE ABOVE AND POSE AS YOU WISH, USING THE BALL JOINT SYSTEM.

3. IE MECHA - ASSEMBLING THE ARMS



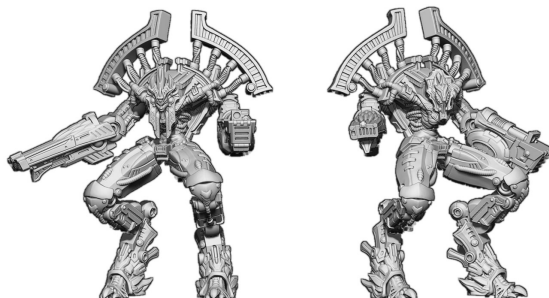
CONNECT THE ARMS AND THE GUNS AS SHOWN ON THE PICTURE ABOVE AND POSE AS YOU WISH, USING THE BALL JOINT SYSTEM.

4. IE MECHA - ASSEMBLING THE MECHA



CONNECT THE DIFFERENT PARTS OF THE MECHA AS SHOWN ON THE PICTURE ABOVE AND POSE AS YOU WISH, USING THE BALL JOINT SYSTEM.

5. IE MECHA - DIE AND LET DIE!



EXAMPLES OF IE MECHA ASSEMBLY