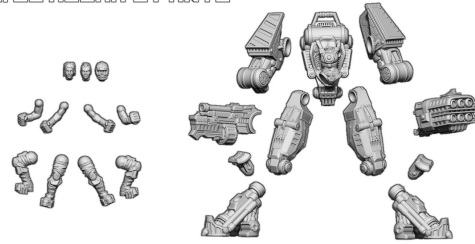


ASSEMBLY GUIDE FOR THE JB MECHA

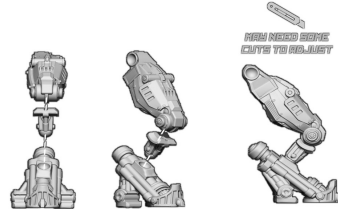
1. JB MECHA'S PARTS



JB MECHA PILOT
(11 PARTS)

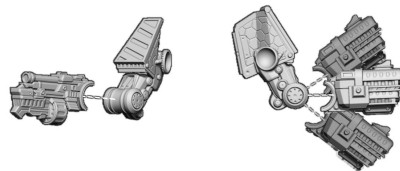
JB MECHA
(11 PARTS)

2. JB MECHA - ASSEMBLING THE LEGS



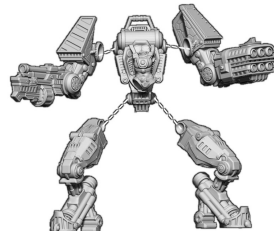
CONNECT THE THREE PARTS OF THE LEGS AS SHOWN ON THE PICTURE ABOVE AND POSE AS YOU WISH, USING THE BALL JOINT SYSTEM.

3. JB MECHA - ASSEMBLING THE ARMS



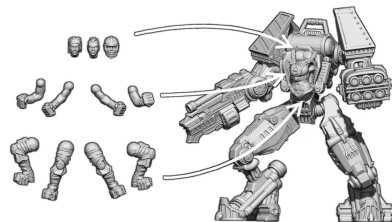
CONNECT THE ARMS AND THE GUNS AS SHOWN ON THE PICTURE ABOVE AND POSE AS YOU WISH, USING THE BALL JOINT SYSTEM.

4. JB MECHA - ASSEMBLING THE MECHA



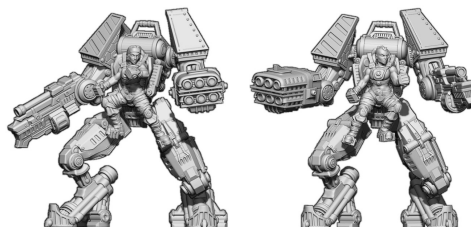
CONNECT THE ARMS AND THE LEGS AS SHOWN ON THE PICTURE ABOVE AND POSE AS YOU WISH, USING THE BALL JOINT SYSTEM.

5. JB MECHA - ADD THE PILOT



CHOOSE THE ACCESSORIES YOU PREFER AND ASSEMBLE THE MECHA PILOT!

6. JB MECHA - READY FOR BATTLE!



EXAMPLES OF JB MECHA ASSEMBLY