

OHP K-LINE USB INTERFACE FOR BMW CODING AND DIAGNOSTICS.

Installation Guide



DEVICE COMPATIBILITY

OHP K-Line USB Interface is suitable for BMW cars and motorcycles since 1996 which support K-line diagnostics., cars mostly from 1996-2007 and bikes depending on the model.

For additional information, please contact us: info@ohp.ee



Useful Utilities

NB! REMOVING OLDER DRIVERS:

In case there is some older version FTDI drivers installed in your system, these should be removed by using FTCClean and/or CDM Uninstaller.

There are two reasons for this. (1) Not so long time ago there were many counterfeit FTDI chips in circulation. These chips still have very limited capability and are restricted to one specific driver version only. No similar problems will occur when using our devices. All chips are fully functional. Drivers must be updated to latest versions. (2) Older drivers do not support newest design FTDI chip that is being used in our devices.

If your K-line USB interface came with a CD, there are device drivers included for manual installation. However we cannot be aware of any future updates from FTDI, so please keep in mind that current drivers will have updates in the future (except for XP and Vista).

FTCClean

<https://www.scantool.net/scantool/downloads/utilities/>

CDM Uninstaller

http://www.ftdichip.com/Support/Utilities/CDM_Uninst_GUI_Readme.html

COMPort_Assignment Utility

<http://www.ftdichip.com/Support/Utilities.htm>

Drivers for Windows 7, 8, 8.1, 10:

Zip-file for manual installation:

<http://www.ftdichip.com/Drivers/CDM/CDM%20v2.12.28%20WHQL%20Certified.zip>

Self-executable EXE:

http://www.ftdichip.com/Drivers/CDM/CDM21228_Setup.zip

Drivers for Windows XP & Vista:

Zip-file for manual installation:

<http://www.ftdichip.com/Drivers/CDM/CDM%202.08.24%20WHQL%20Certified.zip>

Self-executable EXE:

http://www.ftdichip.com/Drivers/CDM/CDM20824_Setup.exe

Device driver installation instructions:

<http://www.ftdichip.com/Support/Documents/InstallGuides.htm>

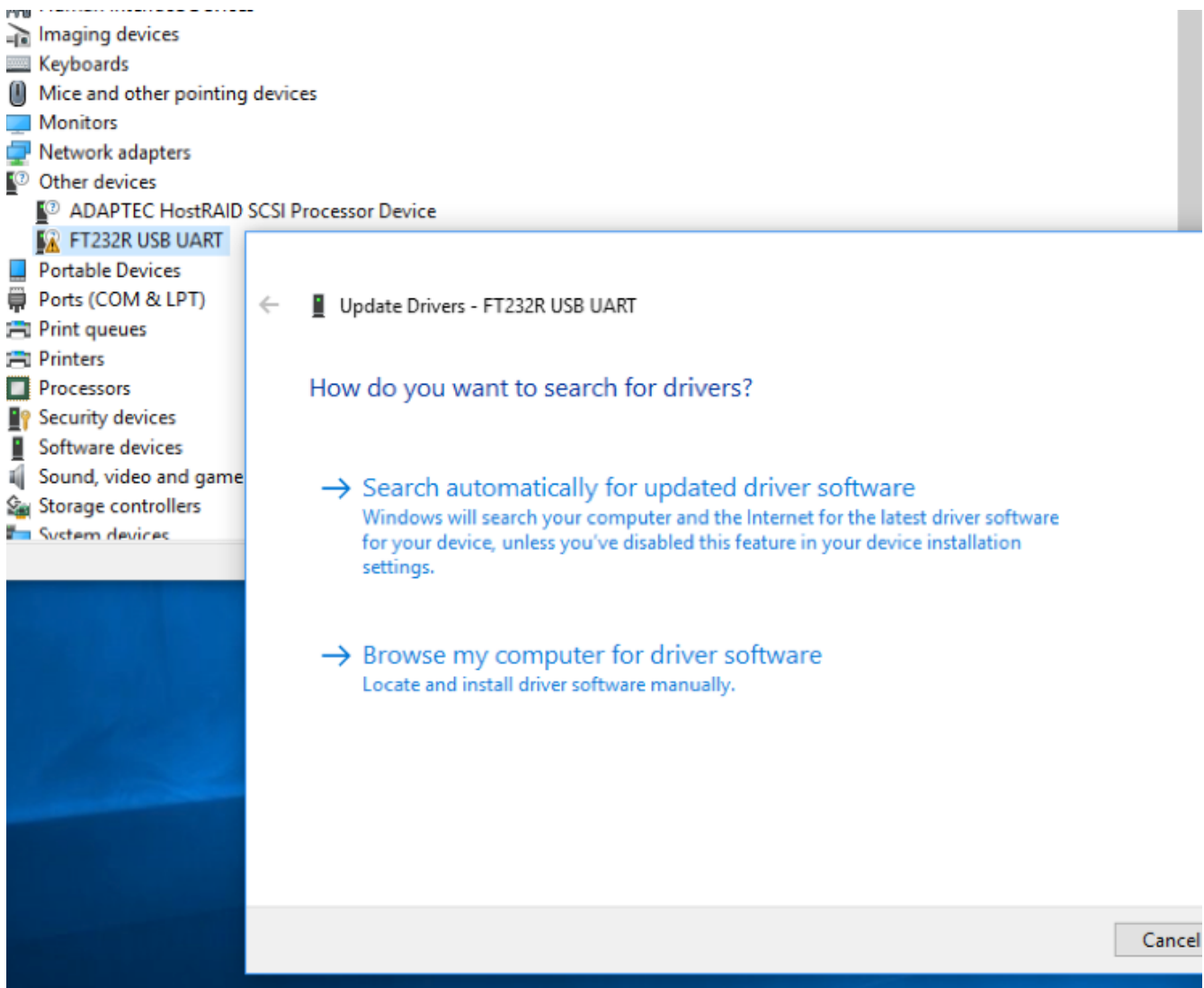
Updating Drivers Process

REMINDER:

Make sure you are connected to your internet.

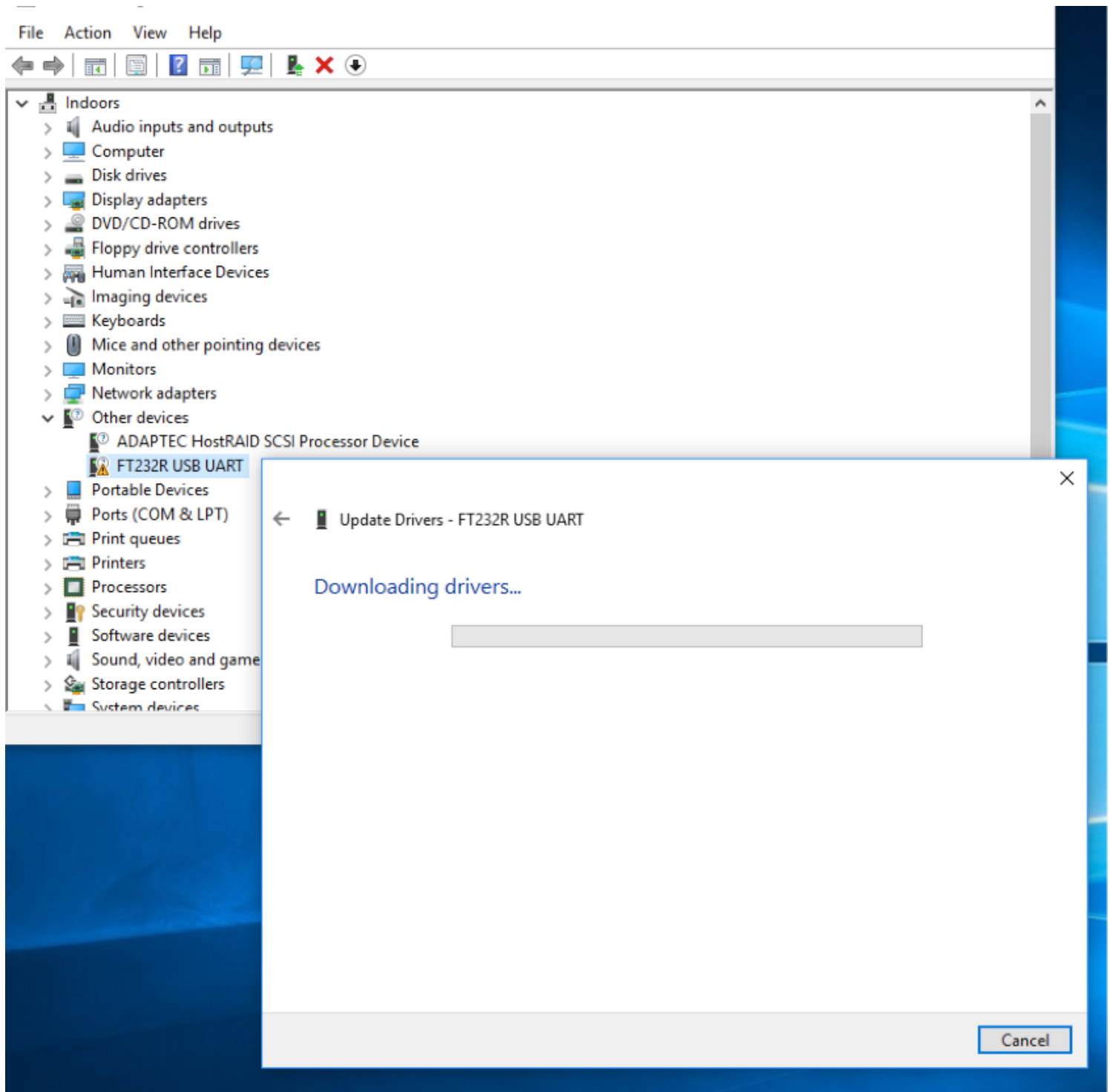
1

Plug your OHP K-Line USB interface device into the USB port. Keep it connected for you are going to use it later. Check Windows Device Manager for unknown devices, like this FT232R USB UART:



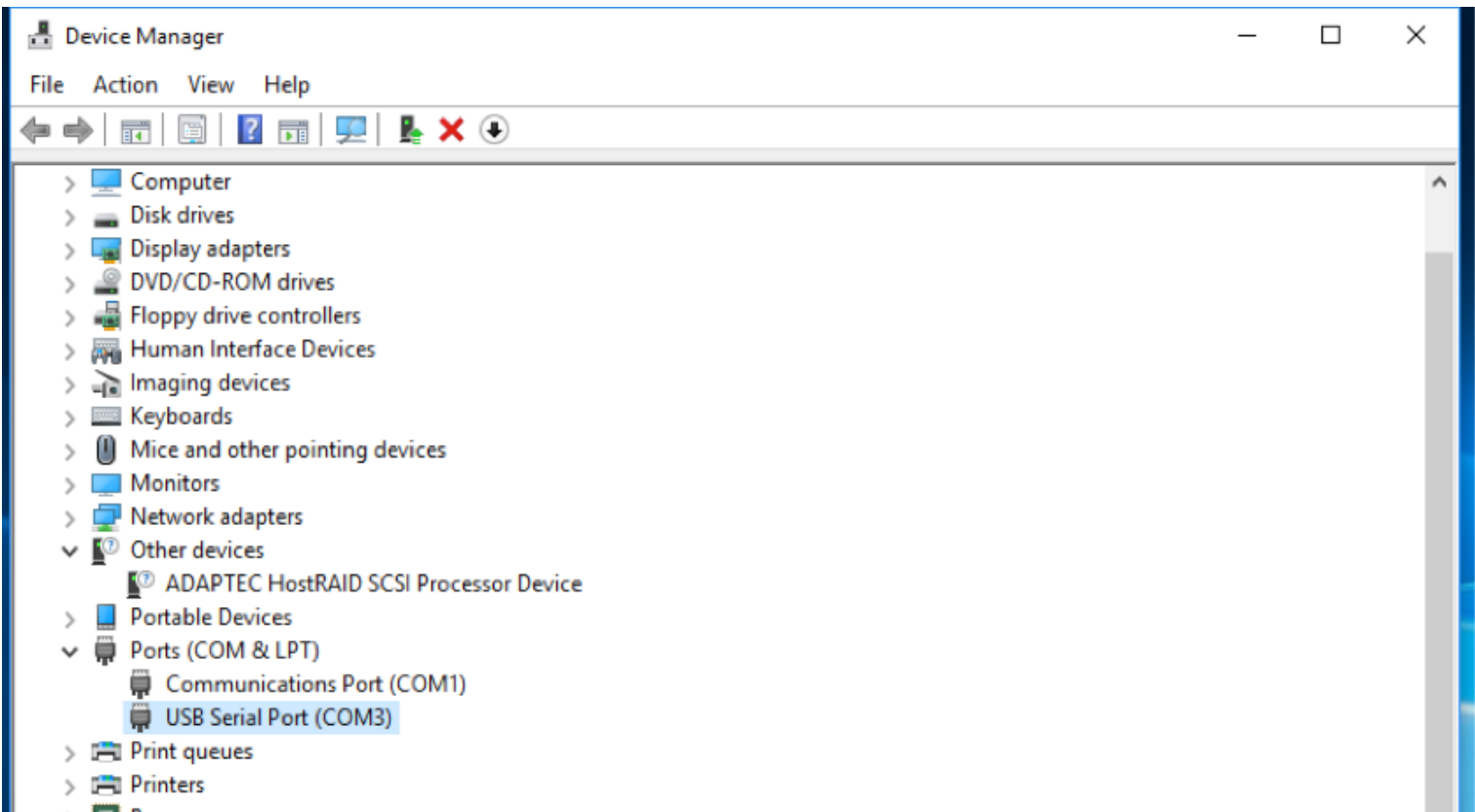
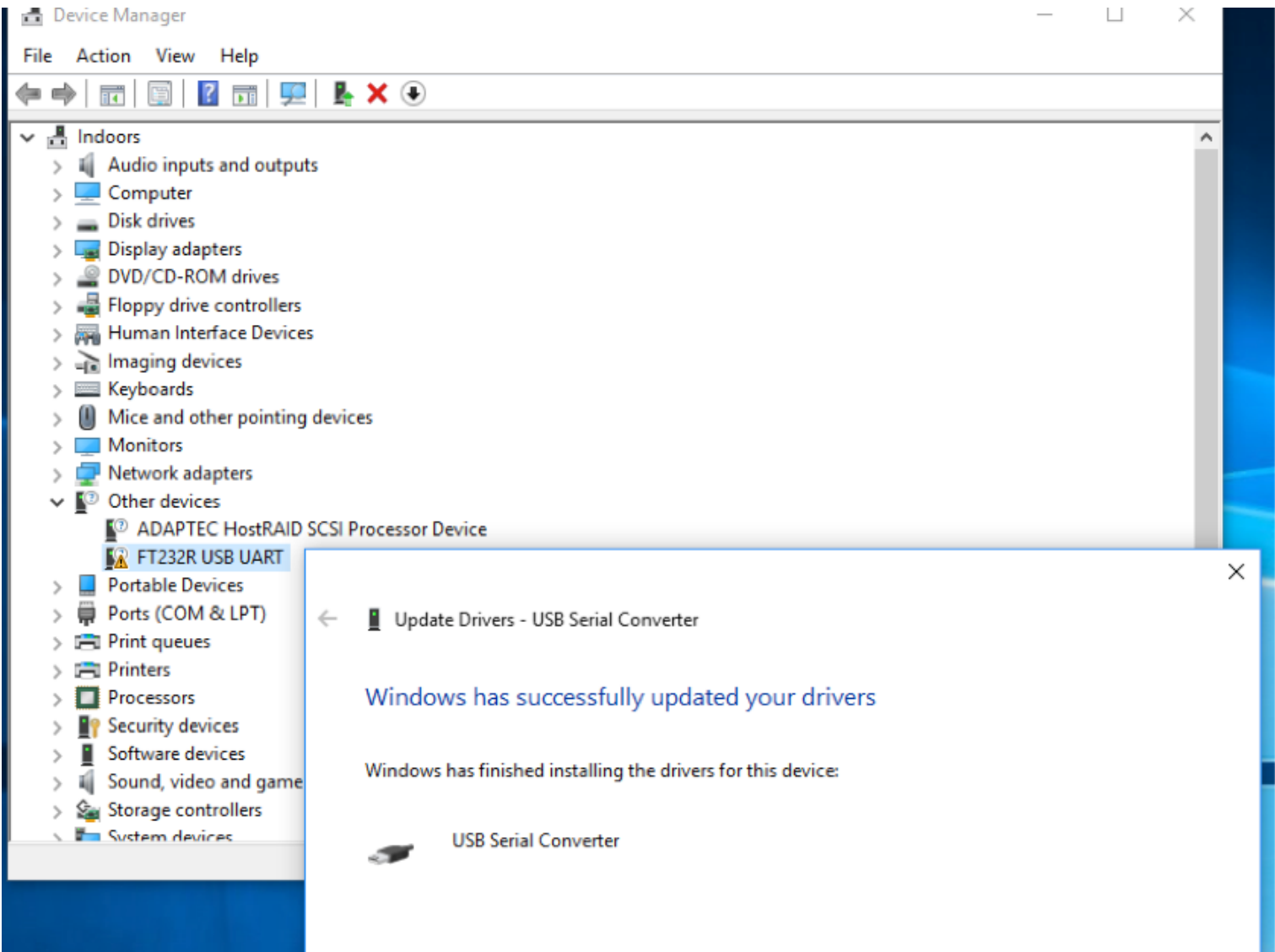
2

Select "Search automatically for updated driver software" to update drivers/software.



3

Success!



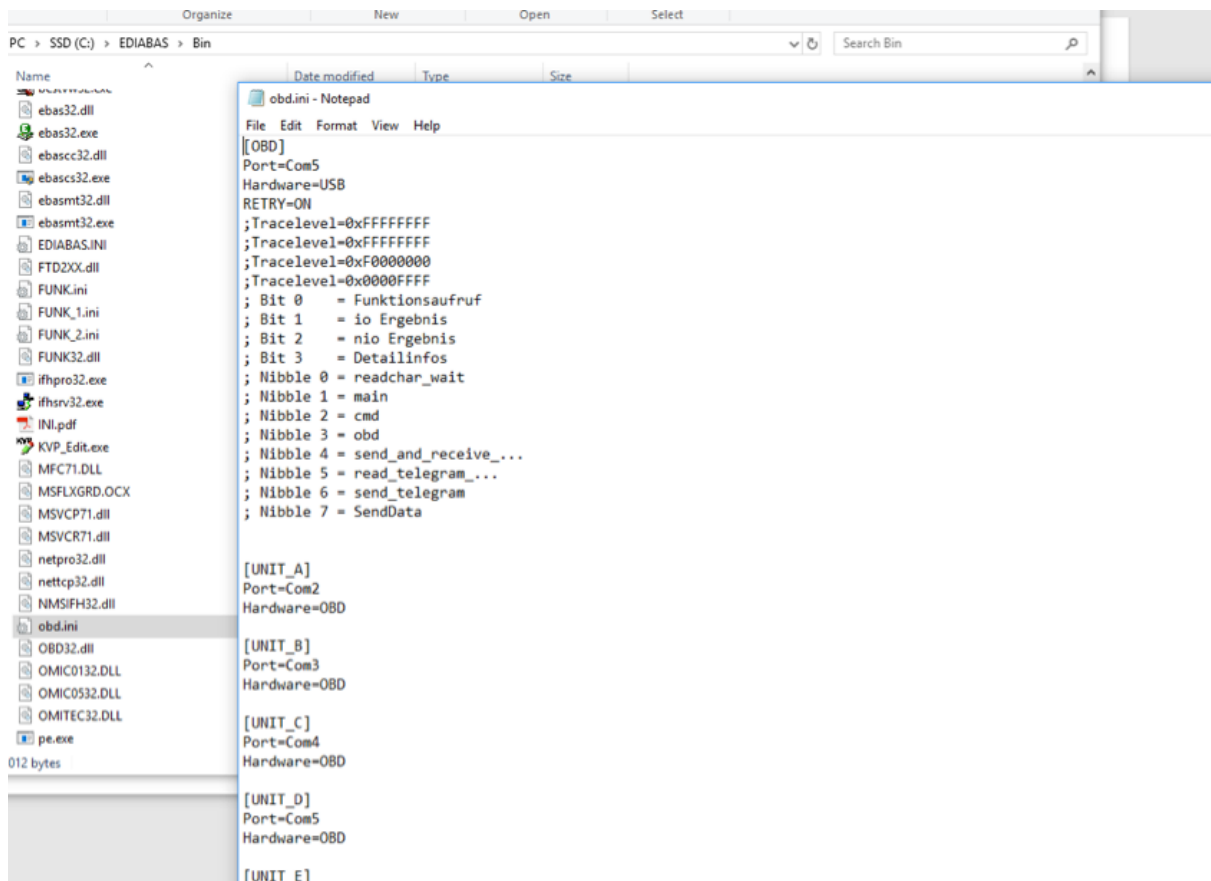
COM Port Setup

REMINDER:

It is absolutely critical to match COM and EDIABAS so that your computer can communicate with vehicle's ECU. EDIABAS is communication layer for diagnostic/coding/flashing software.

Here is how to check COM number in EDIABAS:

- 1 Navigate to C:\EDIABAS\Bin
- 2 Locate obd.ini
- 3 Open it with text editor (Recommendation: Notepad)
- 4 Change value in second row: Port=Com5 to what is required. Click Save & Exit (port latency value still needs to be changed (to 1) in Windows)



There is another way to make ports match.

1

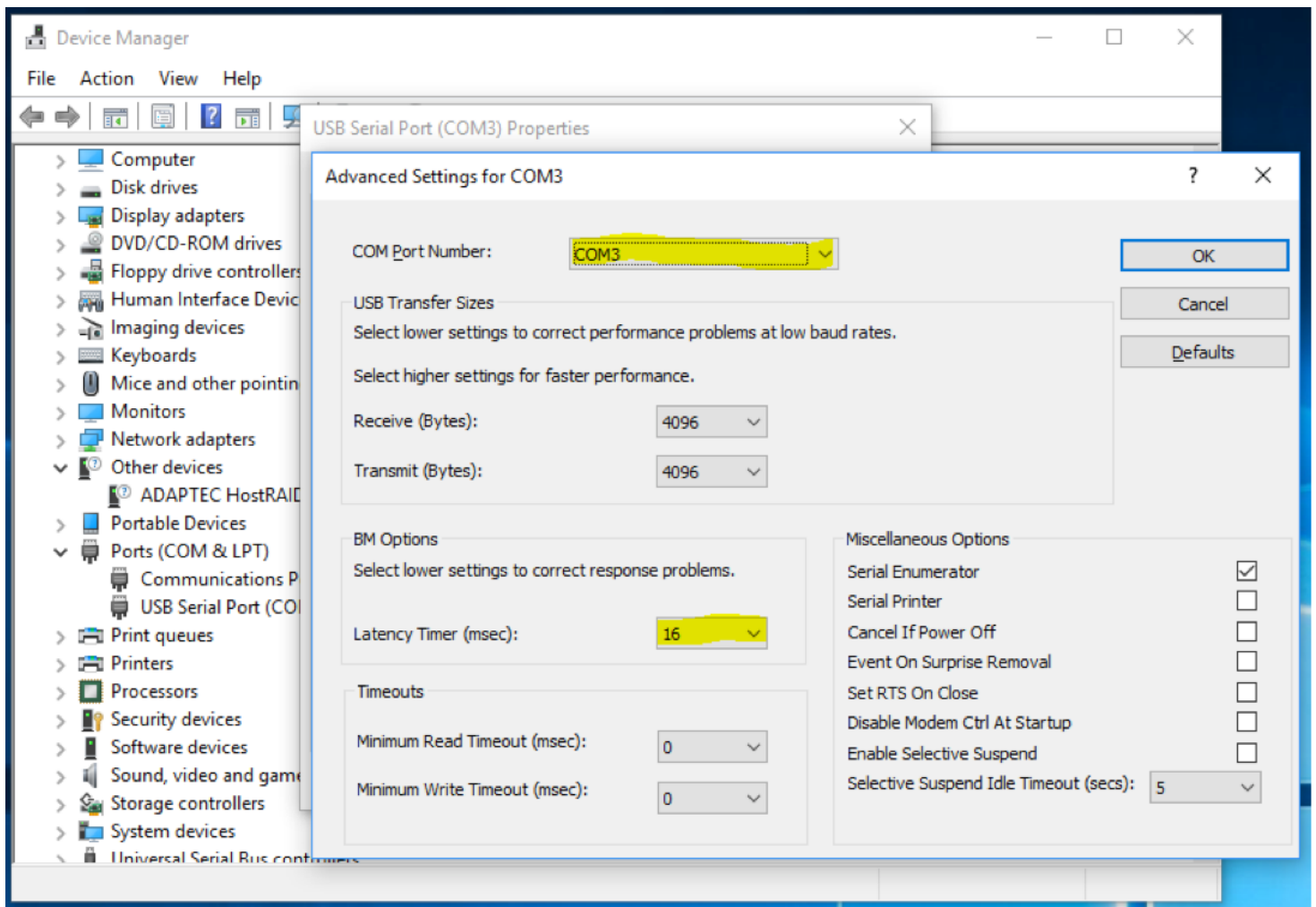
Open Device manager.

2

Right click on USB Serial Port COM() -> Properties > Port Settings -> Advanced -> Match COM to EDIABAS.

3

LATENCY TIMER MUST BE SET TO 1!!!! Save -> OK.



INSTALLATION OF STANDARD TOOLS 2.12

- 1. Software must be installed on C: only!! Installation does not work on other drives!
- 2. Right click on installer.
- 3. Troubleshoot compatibility (Software needs full admin rights to function. Read/write all files
- 4. Click through default values. Done.

NB!

- We have tested this Standard Tools on most Windows versions starting from XP ending with Windows 10, 32- and 64-bit systems. It works on all of them if you follow these instructions. However, this software requires .NET Framework to function. If this software is missing from your computer, you will find right version from Windows Update. Any other problems you may encounter are usually not associated with Standard Tools but rather some Windows system files missing. It happens mostly with fresh Windows installation. We may be able to help you but please take time zone differences into consideration. Contact us: info@ohp.ee
- Standard Tools is suitable for diagnostics, code reading, live data and coding. However while it does include software for flashing, it does not include module software required for flashing control units. Module software (SP-Daten) can be found from different sources.

EXTRAS

- BMW Coding Database: BMW coding parameters. We are in no way affiliated with them. Any donations (to them) are obviously welcome to keep this brilliant tool updated.
- <http://www.bmwcodingdatabase.com/>