



THINK GLOBAL
MAP LOCAL

NYC Grassroots Alliance 9/11/17
Wendy Brawer: Are We Ready?

mapping builds
capacity & resiliency

preparedness
by design



Green Map® Icons Version 3



Sustainable Living

GREEN ECONOMY



TECHNOLOGY & DESIGN



MOBILITY



HAZARDS & CHALLENGES



Nature

LAND & WATER



FLORA



FAUNA



OUTDOOR ACTIVITIES



Culture & Society

CULTURAL CHARACTER



ECO-INFORMATION



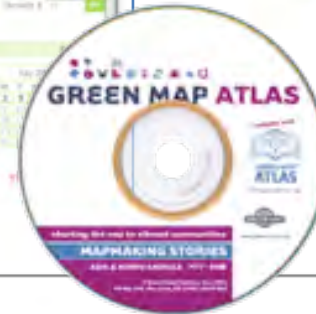
JUSTICE & ACTIVISM



PUBLIC WORKS & LANDMARKS



Since 1995, we have shared adaptable tools for engaging change through mapping



Social
Media
Guide



All Green Maps share a set of 170 icons that highlights assets and liabilities, including climate change - [GreenMap.org/icons](https://www.greenmap.org/icons)



Climate Changed



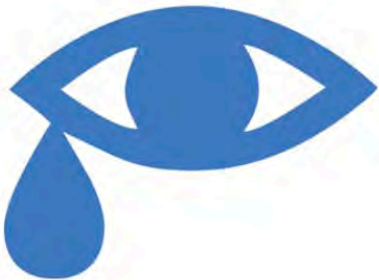
Vulnerable Site



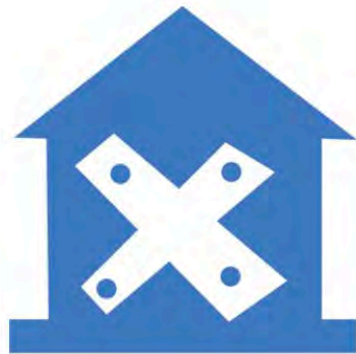
Disaster Area



Habitat at Risk



Blight Site



Abandoned



Contaminated



Greenhouse Gas
Reduction

Today, 65 countries have locally-led Green Map projects that highlight local green living resources, nature and culture



Explore 1,000 locally published Green Maps at GreenMap.org and in our archive



NYC's Powerful Green Map was inspired by the Great Blackout and focuses on energy impacts, conservation and climate realities



These 100,000 folding maps have 3 views:

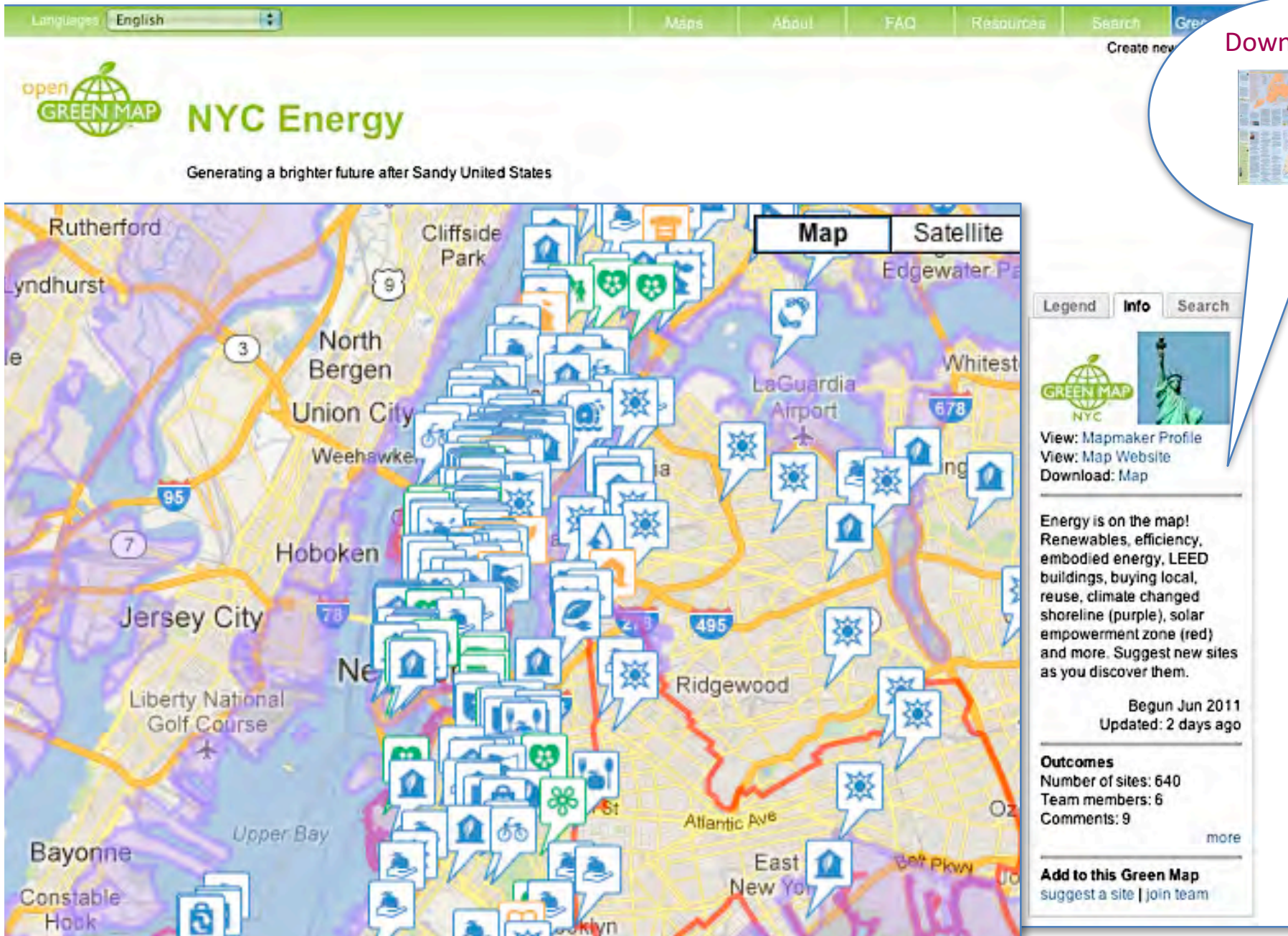
Dark sides of our energy choices • Everyday & easy • Energy investments



GreenMapNYC.org



We put the Energy map's renewables, conservation & climate data on our Open Green Map platform, then added Sandy's high water mark



We inspired 50 Thai cities to map climate issues and counter-measures, as seen in our book at GreenMap.org/impacts



11. Green Mapping over 60 Cities | THAILAND

Stop Global Warming Initiatives

Thailand Environment Institute (TEI) | nongai@tei.or.th
www.tei.or.th
Author: Nongai Chanchanron



Green Maps from 25 cities were exhibited in Bangkok 2006.

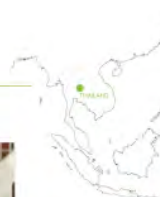
Background: A Climate Change Partnership Pairing Municipal Staff and Schoolchildren

Under the project called "Stop Global Warming Project", Thailand Environment Institute (TEI) has worked with more than 50 local governments at the municipal level aiming to increase awareness about climate change. The project encourages municipalities to work closely with schools and the community to initiate activities that reduce energy consumption and greenhouse gas emissions, leading to a better environment in their city.

The Stop Global Warming project uses Green Map as a situation analysis tool to identify a city's "strengths", "weaknesses", "opportunities" and "threats" using the cons

to visualize 4 main areas: waste minimization, sustainable transport, urban greening and energy efficiency. Making a Green Map involves the community and youth through workshops organized by the municipality. Teams of students, teachers and municipal staff are established and TEI workshops train adults and activate camp for youth.

The project started in 2005 and to date, Thailand Environment Institute has introduced Green Map System to more than 60 cities nationwide.



Impacts: From Situation Analysis to Strategic Plan

Working with local governments is challenging yet Green Mapmaking is an effective way of informing local authorities about the problems discovered. The project emphasizes cooperation between local governments and schools, with students representing the residents who live in the city. They provide ideas to improve their cities, such as bike lanes, public spaces, waste banks, recycling points etc.

Tungtong, a city located in the south of Thailand, started the Green Map in 2005, charting green sites and pollution sites throughout the city. People of all ages participated. A year later, Tungtong developed the second version of the map using an aerial map as a base map, which shows all the physical characteristics of the city such as parks, roads and waterways etc. Through the Green Map, environmental issues were prioritized and local action plans were developed to address traffic, solid waste management, increasing green area, flood prevention and urban planning.

Trang Municipality, a tourist town on the Andaman Sea, used Green Map to promote "green restaurants" that avoid using non-degradable materials such as Styrofoam and plastics. It is hoped that more restaurants will join the initiative to reduce the waste going to landfill.

Using Green Map as a tool has helped local governments, NGOs, communities, and youth find realistic solutions, which often involve field research and input from the community. Municipalities can use Green Mapmaking to assist in their land-use planning and environmental local action plan to make their city a more sustainable place to live.



TEI's Green Map products may be available at GreenMap.org/thai

Trang Green Map visualizes the city as a forest.

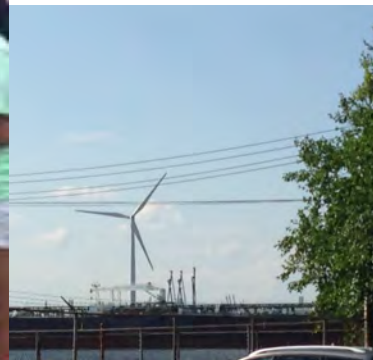


We're also helping local groups in frontline communities in and around NYC create Green Maps, too

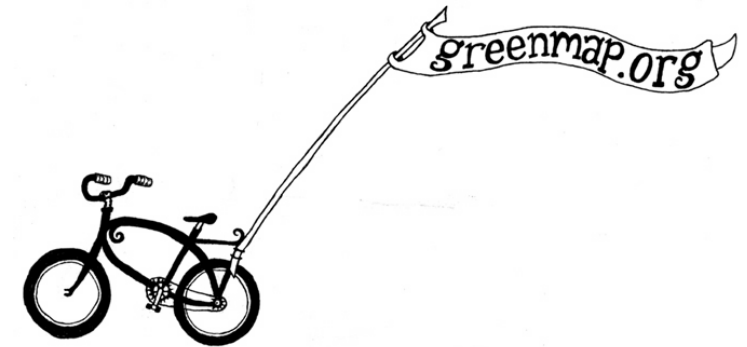


Youth Leaders
on Staten
Island's Port
Richmond

More projects
at
[GreenMap.org
/news](https://www.greenmap.org/news)



Our tours, exhibits, workshops and consulting leverage change by sharing knowledge, awareness and experiences



'Adapting to Change' Lower East Side Cycling Tour #4 This Sunday

If you missed an earlier version of this ride (recapped in Boogie here), you have another chance this Sunday. The Adapting to Change Cycling Tour #4 will meet at 11:30 a.m. at the

Green Map is involved in everyday bicycling and neighborhood readiness coalitions



Green Map is among the 50 groups in this coalition

LES ARE YOU READY? DISASTER READY?

LESReady! is a coalition of community groups and institutions that focuses on building community resiliency in the Lower East Side. LESReady!, which formed in response to Hurricane Sandy, now works to coordinate our response, resources, preparedness planning and training in the event of future disasters.

Since our inception in 2013, we have:

- Helped LES residents secure **\$335 million** in coastal resilience assistance.
- Secured the **Mayor's Fund** to aid residents after the East village explosion.
- Secured a radio transmission tower for **LESReady's Emergency Radio service**.
- Offered disaster preparedness and resilience trainings and over 2,000 "Go bags"
- Mobilized elected officials and bring NY Rising

Our work focuses on Manhattan's Community Board 3 area and the immediately adjacent neighborhoods that our groups may serve.



Connect with LESReady!

Want to learn how to prepare yourself, your family, your building, and your community for disasters? Want to learn about climate change impacts and how to build a resilient community?

- lesready.org
- (347) 855 - 5870
- lesreadyinfo@gmail.com
- Facebook: [LESReadyNYC](https://www.facebook.com/LESReadyNYC)
- Twitter: [@LESReadyNYC](https://twitter.com/LESReadyNYC)

Join LESReady!

- Join other local organizations and groups to build a more resilient LES
- Access bimonthly trainings to increase your capacity and leadership
- 24/7 access to the coalition in an event of a disaster
- Gain access to a network of city and state agencies and resources
- Get the most recent information about resilience in the community

Join today! Visit our website - lesready.org - and select "Become a Member."

LOCAL SPOKES

Lower East Side and Chinatown Bicycling Coalition

People's Climate March Bike Bloc

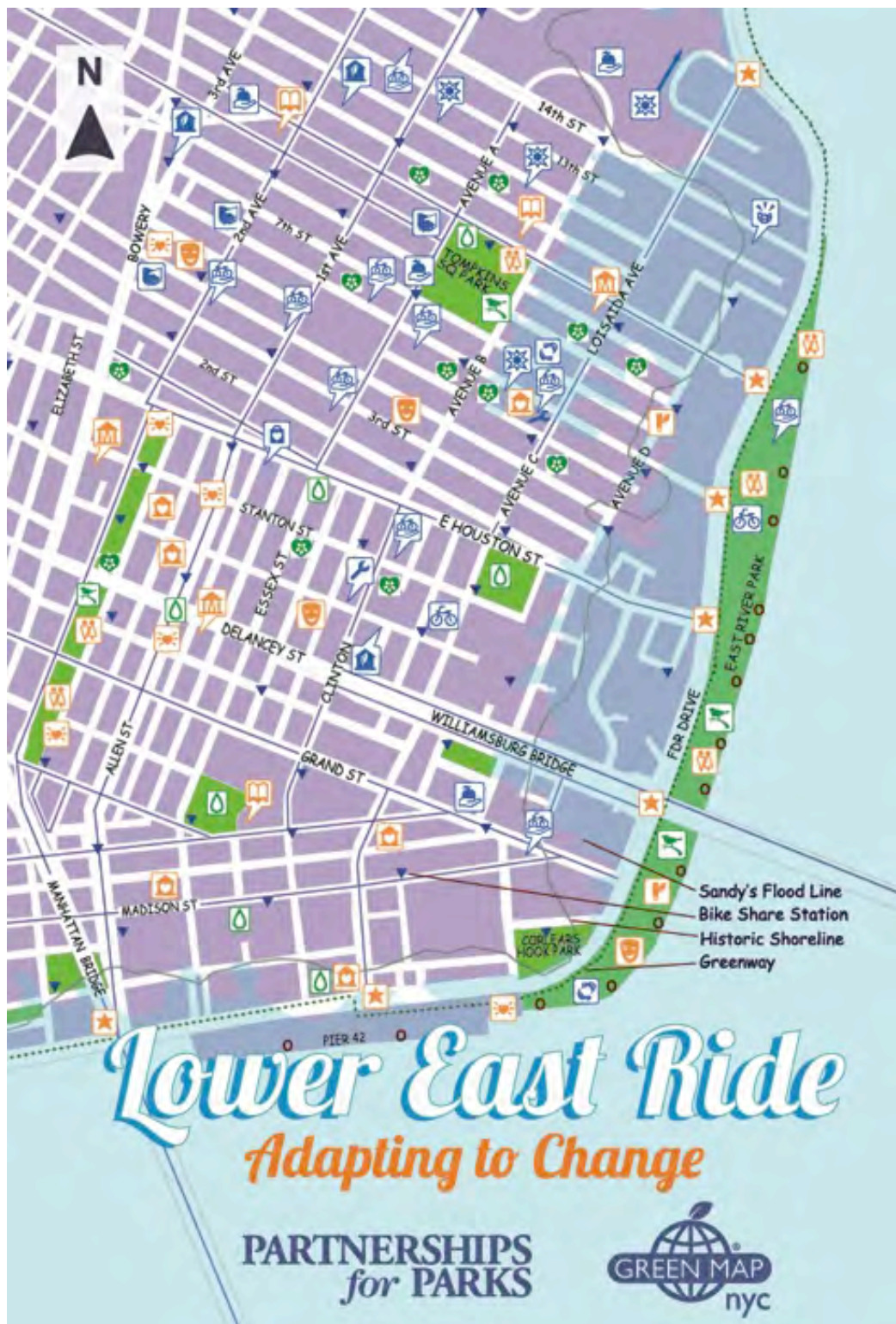


Energy & Environment Exploration Module 4

Car-Free Mobility

Don't Drive yourself to Extinction!





Lower East Ride promotes biking vs climate chaos



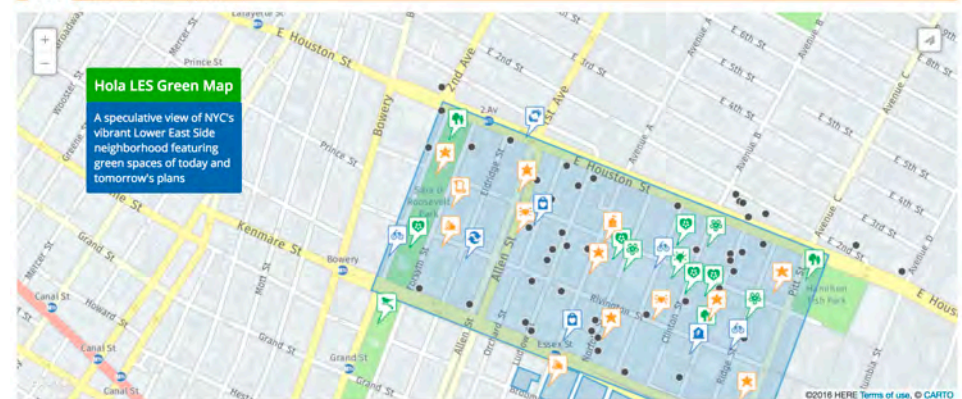
In Chinese, Spanish and English

[Facebook.com/lower.east.ride](https://www.facebook.com/lower.east.ride)



Hola LES NYC Green Map

view edit outline track



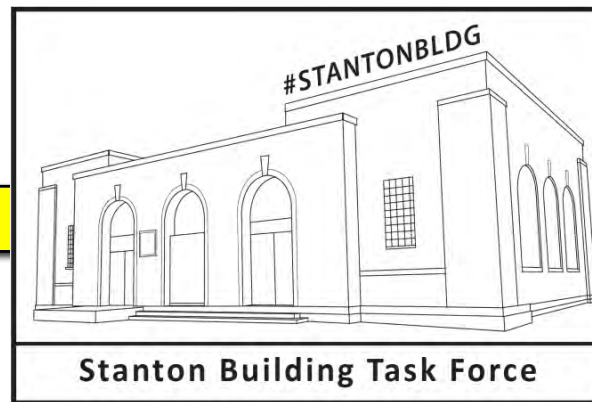
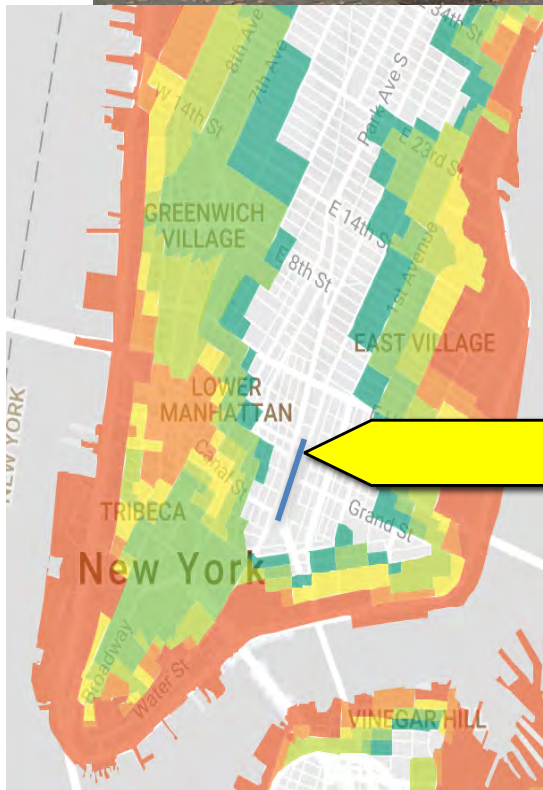
Mapping the green spaces of today and tomorrow's developments

All this lead to the making of **Bike Ready**. This 4 minute video & guide uses footage from Sandy to organize cyclists for emergencies

GreenMap.org/bikeready



Green Culture Space Quest



Beginning in 2012, Green Map has supported the return of a Park House for community use, in partnership with Sara D Roosevelt Park Coalition, starting with these workshops

Sara D Sustainability Series



Free Workshops! Friday 6:30 - 8:30 pm

M'Finda Kalunga Community Garden

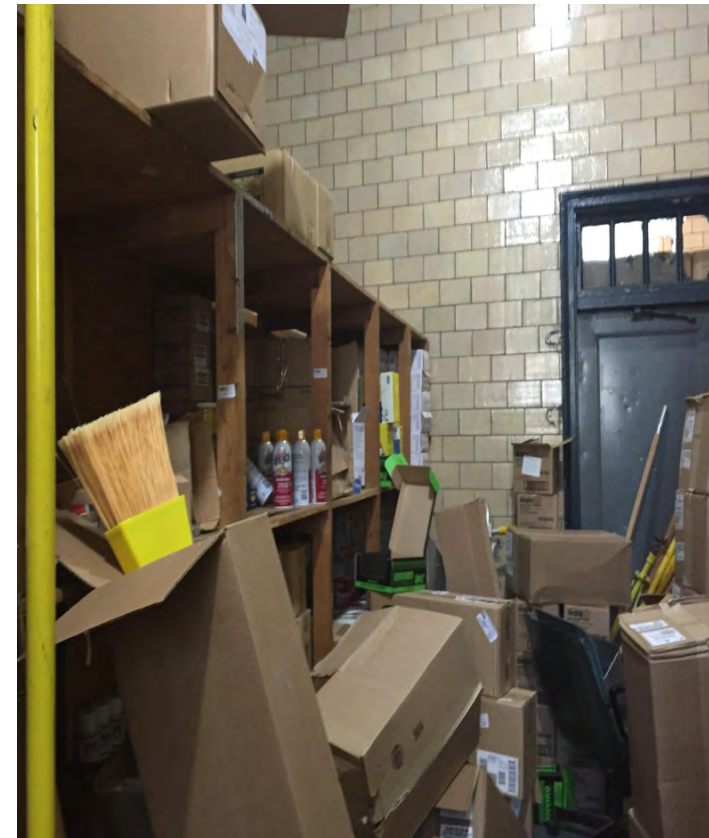
- 8/10 · Bike Repair & Safety
.....with Time's Up!
- 8/17 · Green Jobs in our
Community & Intro to Tools
.....with Green Map System
- 8/24 · Composting, Bokashi &
Mud Ball Making
.....with MoS Collective
- 8/31 · Bike Repair & Safety
.....with Time's Up!

 **M'Finda Kalunga** in Sara D Roosevelt Park
COMMUNITY GARDEN (Rivington & Chrystie, LES)

All ages welcome!
Postponed if pouring.
.....Series hosted by.....



Inside the Stanton Building with CM Chin, Parks officials & Roosevelt Park Coalition – 2015
Formerly community space, now storage for all Manhattan Parks. \$1M for new bathrooms granted by Chin & Brewer



Outside Stanton Building – after long drives from distant Manhattan parks, the truck loading zone in this narrow park creates safety issues, as well as greenhouse gases.



Stanton Building Visioning & It's My Park Day - July 6 2016



Climate Action - Resiliency Lab can include skills for all ages: bike innovation and “repair cafe” - local energy - community mapping - green jobs - beekeeping - climate design ‘makerspace’ - more



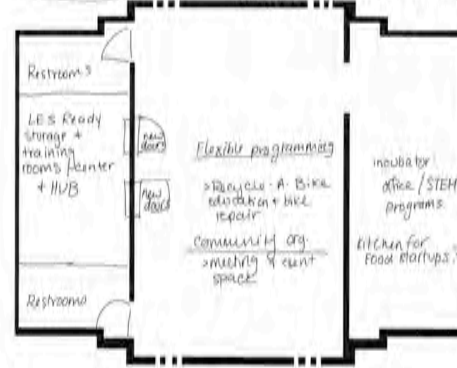
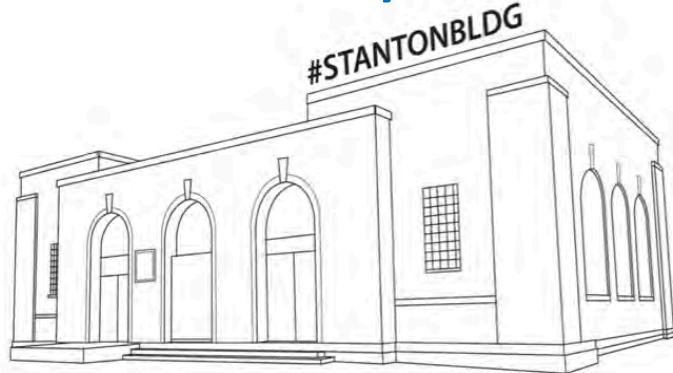
2016 Participants:



**Time's Up
LUNGS & NYCCGC
LES Ready & Beyond Grid
LES Ecology Center
Mechanic Garden
Collective Forccee**



2016: visioning a climate action center - resiliency 'lab'



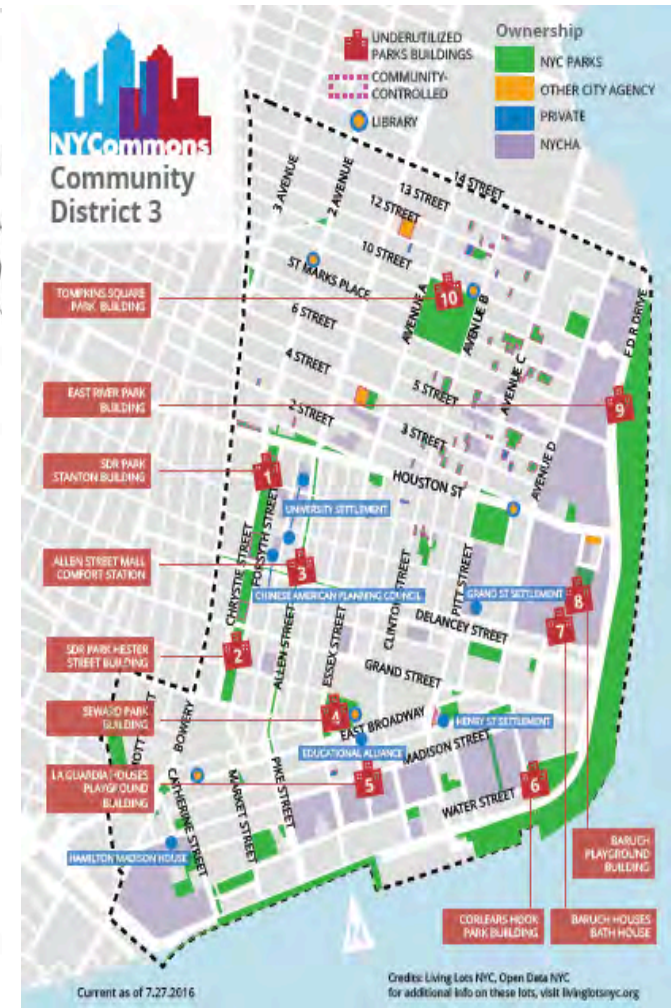
Building exterior about 70 x 40 feet
Center section is about 35 x 40 and sides 17 x 40 feet


Take the Survey!
www.bit.ly/NotSB51



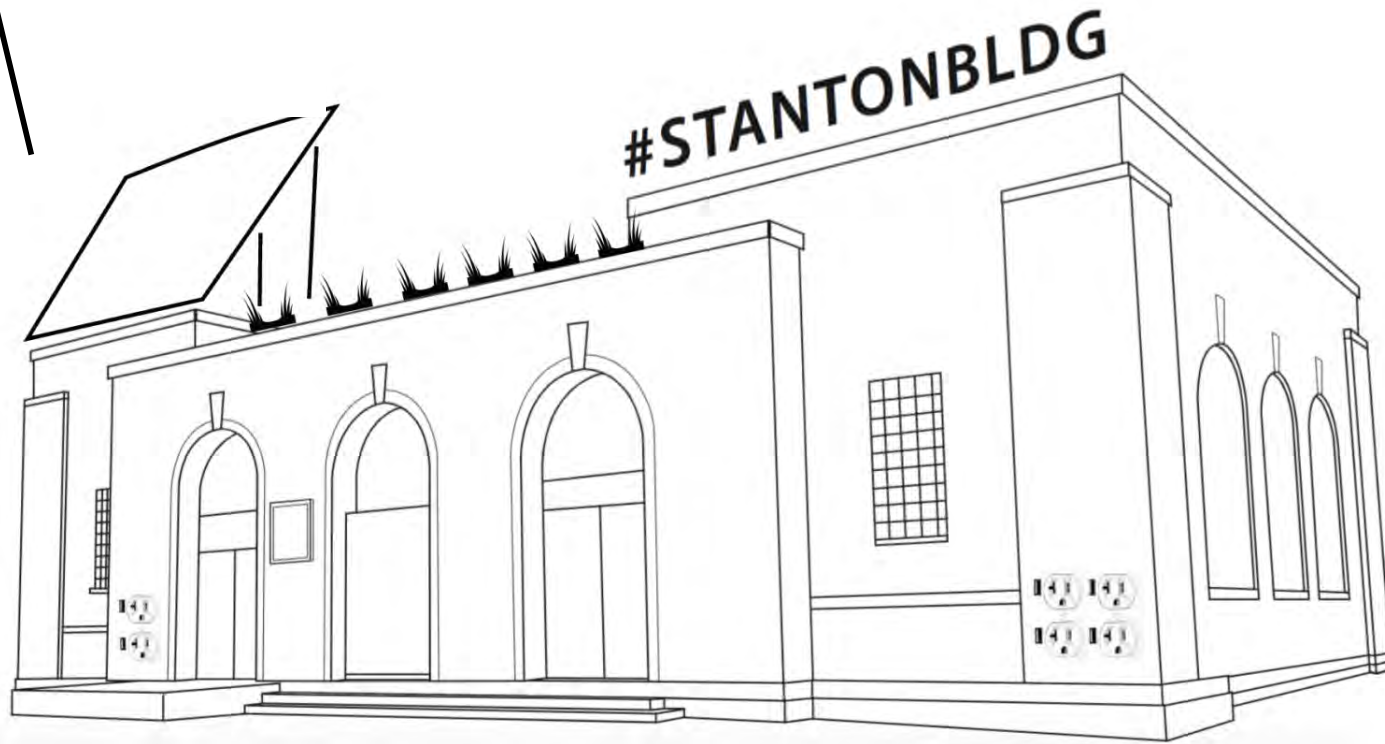
News & announcements
www.sdrpc.mkgarden.org
Twitter #StantonBldg

NYCommons





Our vision for a homeless outreach
and community 'green culture' center supports
our mission to address climate & social change
directly and acts as a model for parks across NYC



The Stanton Building Task Force is led by Sara D Roosevelt Park Coalition, University Settlement and Green Map System



Recent Developments towards the Return of the Stanton Building



Town Hall with Council Member Margaret Chin and Mayor de Blasio on SDR Park's Stanton Building's Return



See video Here. Begins at 2:09:19

Debra Jeffreys-Glass VP of SDR Coalition and Co-Chair of the M'Finda Kalunga Community Garden asked Mayor de Blasio for the Stanton Park Building's return to community use.

Finalist! 7/17

**DESIGN TRUST
FOR PUBLIC SPACE**



12/1/16 - City Council Hearing on inaccessible park buildings.

#StantonBldg testified - <http://bit.ly/596NYCcCT>

6/17 Direct responses at the Mayor's LES Town Hall

12+ articles in 5 publications

Letters of Support

BOWERY B BOOGIE

THE VILLAGER

dna info THE LO-DOWN

BEDFORD + BOWERY

LOWER EAST SIDE

Blue-Sky Thinking Guides a Push to Turn LES Park Building Into a Community Center




(photo: Cassidy Danc Graves)

On the northern side of Sara D. Roosevelt Park sits a large brick structure. Once a youth center, the Stanton Building was shut down during a time of high crime in the Lower East Side and is now used only for storage by the Parks Department. Since the late '90s, there's been talk of returning it to community use, but that has yet to happen. So, Wednesday afternoon, a group of local activists gathered outside of

- Gale Brewer, Manh'n Boro President
- Margaret Chin, NYC Council Member
- Goddard Riverside Homeless Outreach
- Susan Lerner, Common Cause
- Rob Watson, LEED Fellow
- LES Ready





Allegra Hobbs @AllegraEHobbs · Jun 21

Replying to @AllegraEHobbs

Bill Castro says they are looking for better storage facility, "we're very sincerely looking for this," he says, adding they want to get out

2 1

Good to hear, Parks Commissioner Castro

#StantonBldg
Want to get involved or join the mailing list?

<http://sdrpc.mkgarden.org/news/>



Join us!

GreenMapNYC.org/news/events



THE
NEW
SCHOOL

TISHMAN ENVIRONMENT
AND DESIGN CENTER

Preparing for Today: Urgency, Engagement & Action in the Age of Uncertainty

Wednesday, October 25th

6:30 - 8:30pm

Wollman Hall

65 West 11th Street Room, Top Floor



RSVP: <http://bit.ly/PreparingForToday>



9/20/17 rsvp:
bit.ly/LER17gm

Sept 23-24
Oct 21 or 22
Building

LES Gardens Harvest Fest (lungsnyc.org)
It's My Park Day @ Stanton

(follow our news and updates sdrpc.mkgarden.org/)

Sat Oct 28
Sun Oct 29

Climate Justice March (lesready.org)
Sandyween (lesready.org)



[facebook.com/
SmilingHogsheadRanch/](https://facebook.com/SmilingHogsheadRanch/)

[facebook.com/
GreenMap](https://facebook.com/GreenMap)





GreenMap.org
GreenMapNYC.org

Wendy E Brawer, Director
212 674 1631
web@greenmap.org



Communications for
Green Initiatives

Stakeholder Engagement

Map Design

Sustainability Education

Workshops, Trainings,
Talks & Tours

Tools & services for
Community Organizations,
Schools and Universities,
Businesses &
Governments at all levels

Green Map System
promotes inclusive participation
in sustainable community
development worldwide, using
mapmaking as our medium.
We support locally-led Green
Map projects and creative
initiatives with lasting impact.