



THE UBAYE VALLEY

WINTER

Wonderland

vallée
Ubaye
ALPES DU SUD FRANCE

The Ubaye Valley



The Ubaye Valley is a true “Winter Wonderland” – wide expanses of untouched white snow, surrounded by towering peaks under bright blue skies.

The climate in this part of the southern Alps tends towards sunny days and cold, clear nights, meaning that the snow lasts a long time and the daytime sunshine gives the opportunity to get outside and enjoy it.

Whilst renowned for its ski resorts, the Ubaye Valley offers far more than just skiing, there are also miles of waymarked snowshoeing trails and cross-country skiing routes, dog-sleigh rides, ice skating and sledging.

At Christmas, the villages of the Valley twinkle with thousands of fairy-lights and host Christmas markets where you can buy local crafts and produce.

Summary



SKIING & SNOWBOARDING

4/5

PRA LOUP

6/9

SAUZE SUPER SAUZE

10/12

SAINTE-ANNE

13/15

SNOWSHOEING & NORDIC SKIING

16/17

NORDIC SKI RESORTS

18/19

CITIES

20/21

CULTURE

22/23

BOOKING... INFORMATION...

www.ubaye.com

SkiinG and snowboardinG



275
KM
OF
PISTES

The Ubaye Valley is home to three alpine ski resorts, offering access to more than 275 km of pistes.

The resorts all offer a range of different price ski-passes depending whether you prefer mornings, afternoons or lunchtimes, consecutive or single days. There are discounts for young skiers, students and over 65s. The resorts are suitable for all abilities, with pistes for beginners through to experts. There are several snow parks and half-pipes for boarders or free-style.

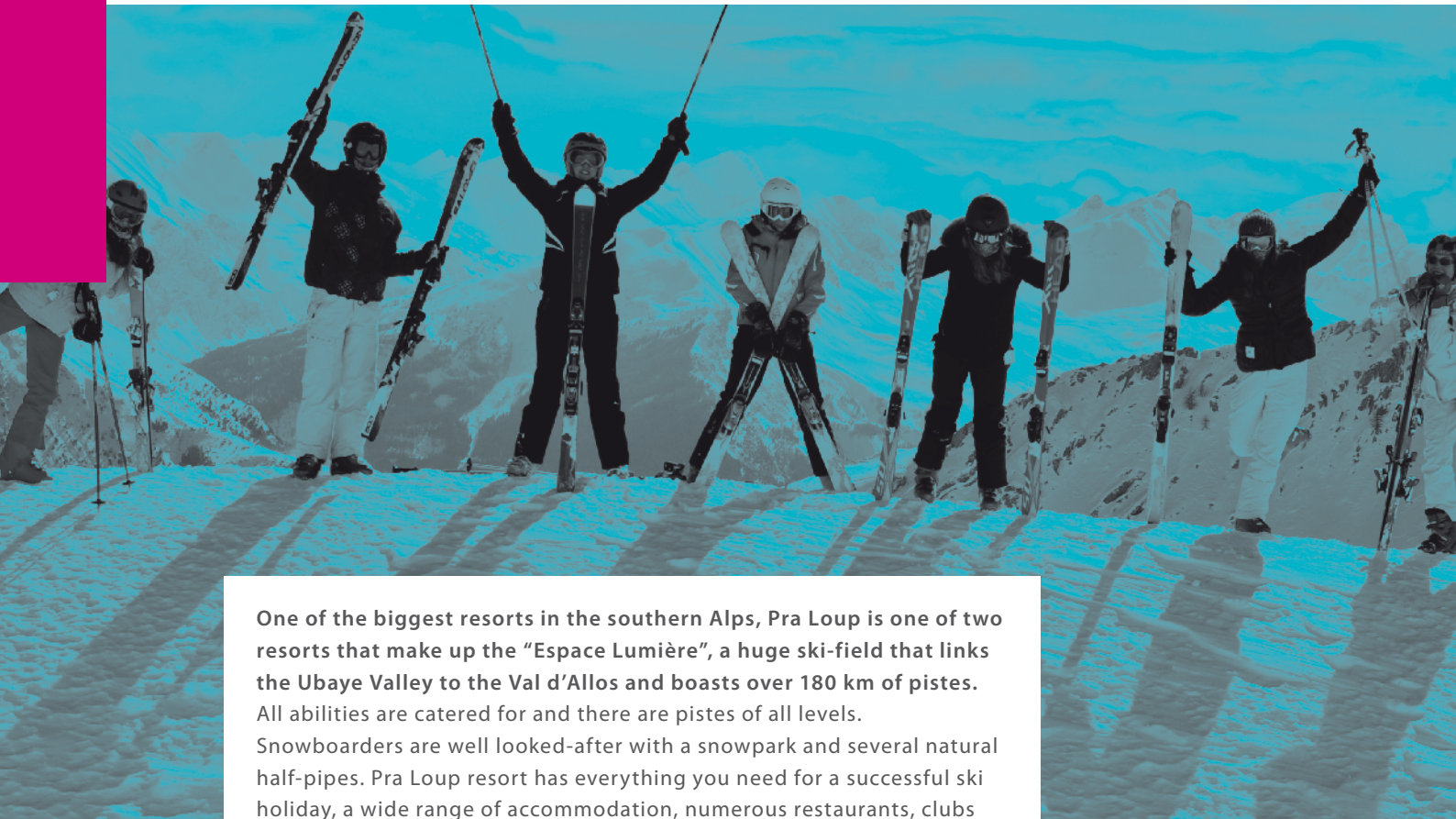
winter fun



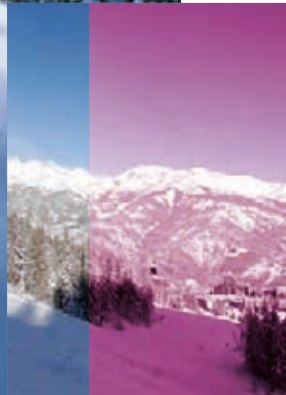
Not everyone wants to ski all the time – with this in mind the Ubye Valley also offers a host of other winter activities such as sledging, dog-sledding, ice skating, ice karting, swimming, paragliding and hang-gliding.



Pra louP



One of the biggest resorts in the southern Alps, Pra Loup is one of two resorts that make up the “Espace Lumière”, a huge ski-field that links the Ubaye Valley to the Val d’Allos and boasts over 180 km of pistes. All abilities are catered for and there are pistes of all levels. Snowboarders are well looked-after with a snowpark and several natural half-pipes. Pra Loup resort has everything you need for a successful ski holiday, a wide range of accommodation, numerous restaurants, clubs and bars, family entertainment such as ice skating and a cinema and everyday necessities such as mini-markets and bakers.



Looking for a place to STAY?

Tourist residences,
holiday centres,
hotels, guest houses
and B&Bs...

A large choice
of accomodations
available on

www.praloup.com



› 180 KM OF PISTES

81 PISTES:

13 GREEN

31 BLUE

32 RED

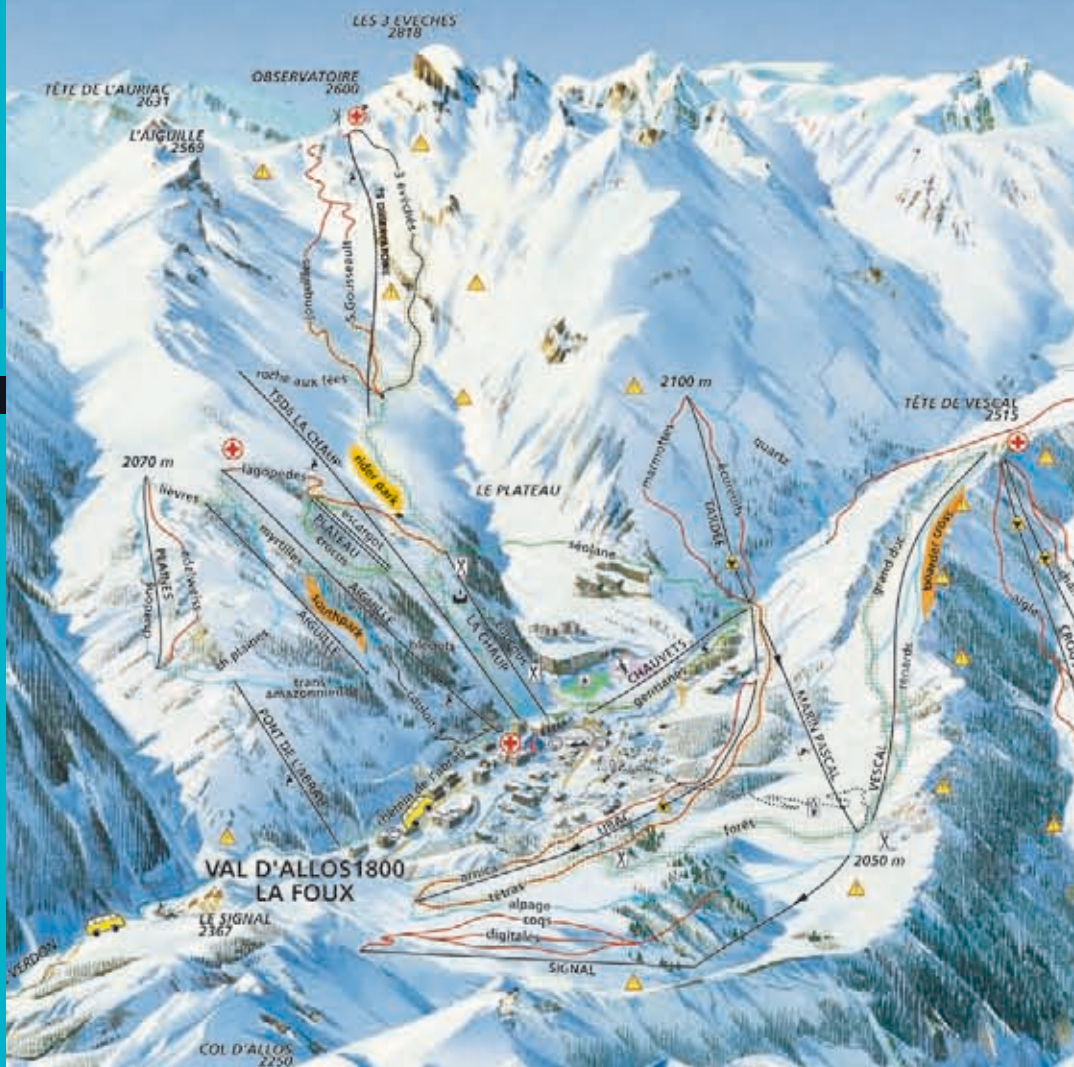
5 BLACK

› 43 SKI LIFTS

› 3 CHILDREN'S GARDENS

4 TOBBOGANS RUNS

8 ALTITUDE RESTAURANTS
ACCESSIBLE TO SKIERS AND
TO WALKERS



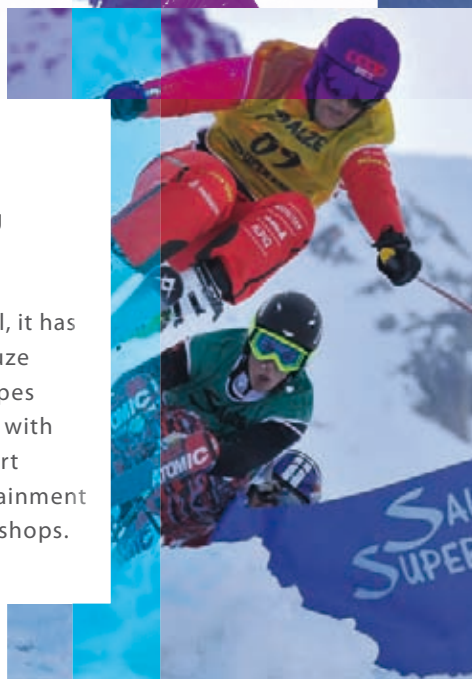
Val d'Allos - Pra Loup



Sauze Super Sauze



Recognised nationally as one of the top sites for alternative winter sports such as ski cross and freestyle, Sauze Super Sauze has come along way since its beginnings as a small family resort. The resort has been run by the same family since the 1930s and although it maintains an intimate feel, it has grown enormously over the years. Sauze Super Sauze offers 65 km of pistes of all levels from nursery slopes to black runs. There is also an enormous snowpark with rails, jumps and a 300m natural half-pipe. The resort has a range of accommodation options and entertainment including restaurants, a cinema and a selection of shops.



**SAUZE
SUPER SAUZE**

SAUZE SUPER SAUZE



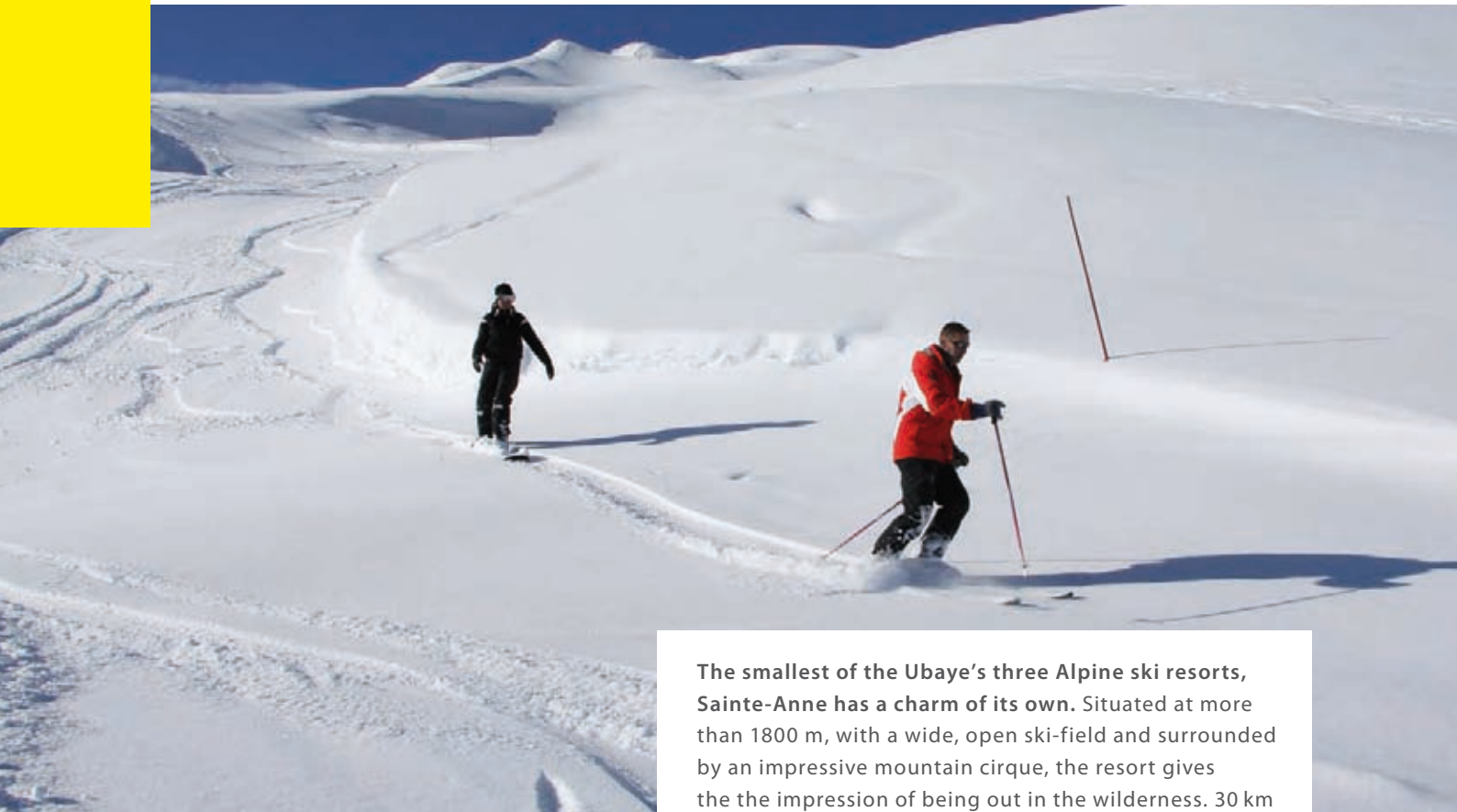
Looking for a place to STAY?

Hotels, tourist residences,
guest houses and B&Bs...
A large choice
of accommodations
available on

www.sauze.com



Sainte-Anne



The smallest of the Ubaye's three Alpine ski resorts, **Sainte-Anne** has a charm of its own. Situated at more than 1800 m, with a wide, open ski-field and surrounded by an impressive mountain cirque, the resort gives the the impression of being out in the wilderness. 30 km of pistes of all levels lead back to the charming resort centre which houses restaurants and sports shops.

SAINTE- ANNE



Hotels, tourist residences, guest houses
and B&Bs... A large choice
of accommodations available on
www.sainte-anne.com





SnowshoeinG



Snowshoes open up the snow covered Valley and allow you to get out into the untouched, and virtually silent, winter landscape. There are miles of waymarked trails, which are secure and regularly maintained. Those wishing to travel further afield have the option of hiring a local guide, fully trained and also able to provide all the necessary equipment. The guides often propose themed outings, for example a walk identifying animal tracks. One of the great delights of snowshoeing is being able to see wild animals, in their natural habitat, without disturbing them.

Nordic skiinG

The Valley offers opportunities for cross-country skiing, both classical and skating, on beautifully groomed trails in stunning surroundings.

At both Larche and Saint-Paul sur Ubaye the cross-country skiing area runs the length of a sunlight valley floor, alongside a sparkling mountain torrent. The Nordic sites are also the departure point for numerous backcountry skiing trails.



Nordic Ski resorts

Larche

Situated just before the Italian border, Larche is the Valley's premier site for cross-country skiing. 30 km of pistes weave their way along the wild and unspoiled valley floor, untouched snow leads up to the edge of the surrounding forests. Larche Nordic site also has several kilometres of waymarked snowshoeing trails and three ski-lifts to access several Alpine pistes that are perfect for families.

Saint-Paul

The delightful village of Saint-Paul sur Ubaye is a paradise for snowshoeing and backcountry skiing. The ski area has a dozen kilometres of groomed pistes and endless opportunities to admire the unspoiled scenery. The winter landscape, blanketed with deep snow, and marked only by the tracks of hares or other local residents, reveals a secret, silent world rarely appreciated at the larger resorts.



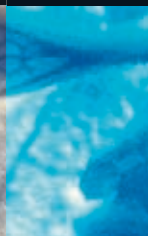
Looking for a place to STAY?

Meyronnes

The site of Meyronnes offers 30 km of pistes dedicated to sledging, snowshoeing or dog-sledding, including an incomparable three kilometre, signed and groomed sledging run which starts at St-Ours and follows the woods and valleys down to Meyronnes.

Guest houses and B&Bs,
Hotels and country hotels...
A large choice
of accomodations
available on

www.haute-ubaye.com



Cities



Looking for a place to STAY?



A large choice of accomodations available on
www.barcelonnette.com

Barcelonnette

Ideally situated, Barcelonnette allows easy access to the Valley's ski resorts either by car or *via* the free shuttle bus service which runs throughout the day from the market place. Barcelonnette offers the convenience and facilities of a small town along with the charm and atmosphere of an alpine holiday destination. Cosy restaurants and bars provide the perfect ambiance for a relaxing evening with friends or family after a long day on the slopes.

ENTERTAINMENT

Barcelonnette and Jausiers boast several accredited restaurants and the variety of eateries is impressive – from local speciality restaurants serving dishes such as fondue and raclette to Mexican, Vietnamese and Italian. The mountain resorts are open throughout the winter season and often host sporting events such as ski competitions, along with dances and firework shows. The resorts are also home to a good variety of bars, restaurants and nightclubs.





Jausiers

About 10 km from Barcelonnette in the direction of Italy, at the gateway to the Upper Valley and the Mercantour National Park, Jausiers is a year-round destination. In winter, the snow-covered meadows around the village sparkle under the clear blue sky and the Valley, surrounded by towering peaks, takes on a magical, fairytale quality.

The town has a daily bus service to Barcelonnette, connecting with buses to Gap and Digne-les-Bains, from where connections can be made for larger cities such as Marseille or Grenoble.



Looking for a place to STAY?

A large choice of accommodations available on

www.jausiers.com



SHOPPING

No trip to France would be complete without browsing around a traditional market and the Ubaye Valley has plenty of those. Barcelonnette has a twice weekly market selling local produce, crafts and other goods. Jausiers is home to "La Maison des Produits de Pays", a special showroom where local producers and craftsmen bring their goods to sell. The store sells everything from local spirits and cheeses to watercolours and woollen scarves.



Culture



Local heritage

In Barcelonnette, and throughout the Valley, are numerous grand Mexican-style villas, some of which are now museums and hotels, these were built by locals who went to Mexico in the late 19th century and returned to the Ubaye having made their fortunes.

A stroll around most Ubayen villages will reveal at least one sundial, often exquisitely painted and sometimes very old.





Museums

The Valley has six museums, each one focused on a particular aspect of Ubayen life such as schooling, hunting or geology. There is also the recently opened “Maison du bois” which combines games, interactive exhibitions on the wood industry and a children’s playground, with demonstrations and walks.

Forts

Being a frontier valley, the Ubaye has seen many invasions and conflicts over the years and consequently boasts some impressive fortifications, beautifully preserved works from the Maginot Line stand alongside older military constructions dating back to the early 19th century. Guided visits are available to visit the interior of these fortifications.

The Ubaye Valley

How to get there

BY PLANE



NEAREST INTERNATIONAL AIRPORTS:

Marseille-Provence and MP -

Low cost airport

www.marseille.aeroport.fr

Turin-Caselle

www.turin-airport.com

Nice-Côte d'Azur airport

www.nice-aeroport.fr

BY ROAD



FROM PARIS AND THE NORTH:

via Lyon, Grenoble, Gap and Barcelonnette

FROM THE SOUTH OF FRANCE:

via Aix-en-Provence, motorway (A51)

as far as Tallard, towards Vallée de l'Ubaye

From Gap and Tallard (1 hour by road)

ROAD AND PASS INFO NUMBER/0 826 022 022

Météo: 0 892 680 204

BY TRAIN



NEAREST SNCF STATION:

GAP: 68 km

TGV AIX-ARBOIS: 210 km

www.voyages-sncf.com

Then connections with SCAL buses.

BY COACH



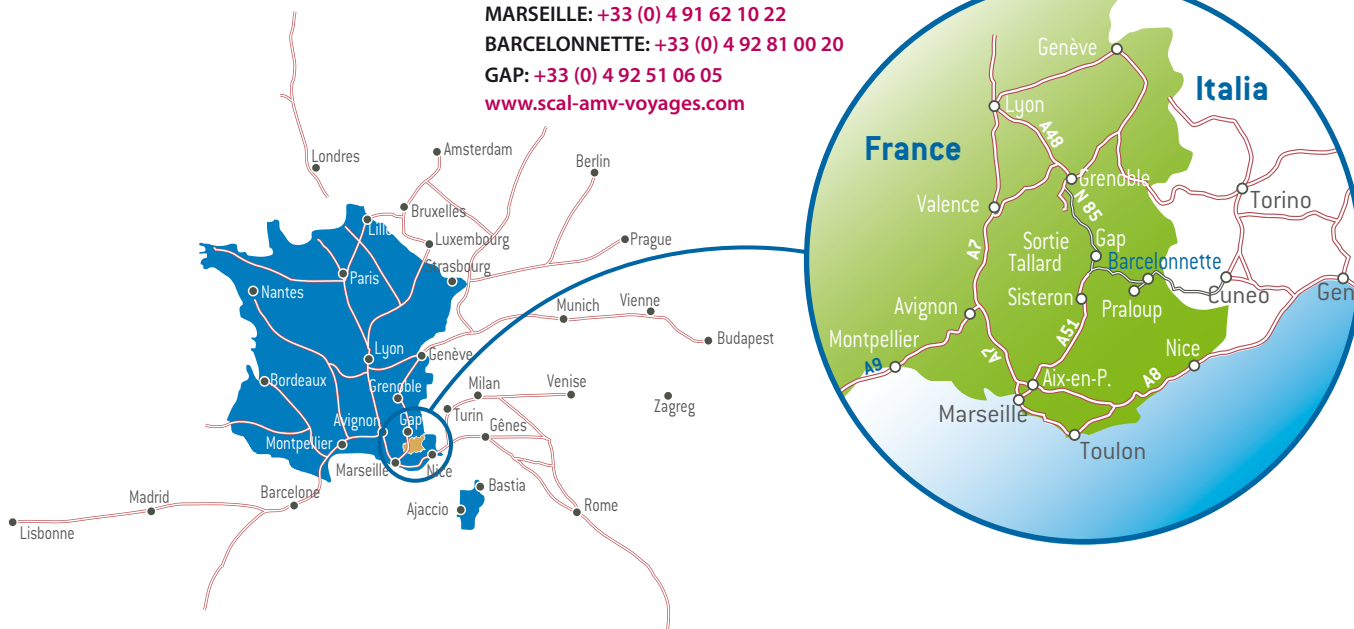
SCAL INFORMATION/RESERVATIONS

MARSEILLE: +33 (0) 4 91 62 10 22

BARCELONNETTE: +33 (0) 4 92 81 00 20

GAP: +33 (0) 4 92 51 06 05

www.scal-amv-voyages.com



Tourist Office

Barcelonnette

Phone: + 33 (0) 4 92 81 04 71

www.barcelonnette.com

Jausiers

Phone: + 33 (0) 4 92 81 21 45

www.jausiers.com

Larche

Phone: + 33 (0) 4 92 84 33 58

www.haute-ubaye.com

Pra Loup***

Phone: + 33 (0) 4 92 84 04 10

www.praloup.com

Sauze

Phone: + 33 (0) 4 92 81 05 61

www.sauze.com

vallée
Ubaye
www.ubaye.com