

Heat-Shrink Splices

HVS

In-line splices for 1/C shielded cable (5-35 kV)

Tyco Electronics' Raychem heat-shrinkable shielded power cable splices are pre-engineered to offer a compact, low-profile installation with a minimum diameter buildup.

All kits contain a solderless grounding kit, consisting of a ground clamp, a ground braid, and a shielding mesh.

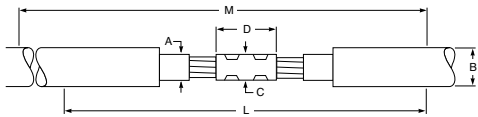
The heat-shrink feature allows the kits to accommodate out-of-round, out-of-spec cable.

Rated to IEEE 404. For use on copper tape, wire shield, lead sheath, and UniShield cables. Some kits contain tube for outer layer.



72

Selection information: (dimensions in inches/millimeters)



Catalog number	Conductor size (AWG/kcmil)	Insulation diameter (min.-max.)	Jacket O.D. (max.)	Connector dimensions		Kit installed length L	Required installation space M	
				Max. O.D. C	Max. length D			
HVS-820S	(5 kV)	(8 kV)						
HVS-821S	#6-2/0*	#6-#2	0.35-0.65 (9-17)	0.80 (20)	0.50 (13)	3.0 (76)	24 (610)	44 (1118)
HVS-822S	3/0-300*	#1-4/0	0.55-0.90 (14-23)	1.15 (29)	0.75 (19)	4.25 (108)	24 (610)	45 (1143)
HVS-823S	350-750*	250-350	0.80-1.25 (20-32)	1.80 (46)	1.10 (28)	6.0 (152)	27 (686)	50 (1270)
HVS-824S	1000-1500*	500-750	1.00-1.60 (25-41)	2.30 (58)	1.45 (37)	8.0 (203)	30 (762)	56 (1422)
HVS-825S		750-1000	1.30-2.25 (33-57)	2.45 (62)	1.85 (47)	8.0 (203)	30 (762)	56 (1422)
HVS-1520S		(15 kV)						
HVS-1521S		#2-4/0**	0.65-1.05 (17-27)	1.25 (32)	0.90 (23)	4.25 (108)	27 (686)	54 (1372)
HVS-1522S		250-350	0.90-1.30 (23-33)	1.50 (38)	1.15 (29)	5.5 (140)	28 (711)	56 (1422)
HVS-1523S		500-750**	1.10-1.60 (28-41)	1.85 (47)	1.60 (41)	8.0 (203)	30 (762)	59 (1499)
HVS-1524S		750-1000	1.25-1.80 (32-46)	2.10 (53)	1.85 (47)	8.0 (203)	34 (864)	67 (1702)
HVS-1525S		1250-2000	1.60-2.50 (41-64)	2.80 (71)	2.40 (61)	8.0 (203)	40 (1016)	74 (1880)
HVS-1520S-W		(15 kV with wraparound re-jacketing sleeve)						
HVS-1521S-W		#2-4/0**	0.65-1.05 (17-27)	1.25 (32)	0.90 (23)	4.25 (108)	28 (711)	39 (990)
HVS-1522S-W		250-350	0.90-1.30 (23-33)	1.50 (38)	1.15 (29)	5.50 (140)	28 (711)	40 (1016)
HVS-1523S-W		500-750**	1.10-1.60 (28-41)	1.85 (47)	1.60 (41)	8.00 (203)	30 (762)	45 (1143)
HVS-1524S-W		750-1000	1.25-1.80 (32-46)	2.10 (53)	1.85 (47)	8.00 (203)	34 (864)	49 (1244)
HVS-1525S-W		1250-2000	1.60-2.50 (41-64)	2.80 (71)	2.40 (61)	11.00 (279)	40 (1016)	54 (1371)
HVS-2520S		(25 kV)						
HVS-2521S		#1-250	0.90-1.20 (23-31)	1.50 (38)	1.10 (28)	4.0 (102)	40 (1016)	56 (1422)
HVS-2522S		350-500	1.20-1.50 (31-38)	1.95 (50)	1.35 (34)	6.0 (152)	40 (1016)	60 (1524)
HVS-2523S		750-1000	1.50-1.80 (38-46)	2.40 (61)	1.85 (47)	8.0 (203)	40 (1016)	62 (1575)
HVS-3520S		(35 kV)						
HVS-3521S		1/0-3/0	0.95-1.35 (24-34)	1.55 (39)	1.00 (25)	4.0 (102)	40 (1016)	53 (1346)
HVS-3522S		4/0-600	1.20-1.70 (31-43)	2.10 (53)	1.50 (38)	6.0 (152)	44 (1118)	62 (1575)
HVS-3523S		600-1000	1.55-2.15 (39-55)	2.80 (71)	1.85 (47)	10.0 (254)	44 (1118)	67 (1702)

Ordering Information:

- Select the appropriate catalog number. Selections are based on the typical dimensions of 100% insulated cables (manufactured in accordance with the data contained in AEIC CS5-1987 and AEIC CS6-1987), commonly used connectors. Nominal insulation thickness (100%): 5 kV: 90 mils., 8 kV: 115 mils., 15 kV: 175 mils., 25 kV: 260 mils., 35 kV: 345 mils. Nominal insulation thickness (133%): 15 kV: 220 mils.
 - For cables manufactured to other specifications, confirm selection with cable and connector dimensions.
 - If using 5/8 kV (1 1/2-mil) cable, use 8 kV selection.
 - HVS-SHIM kits are available if the diameter of one of your cables is not within the standard range (refer to page 95).
 - Kits do not contain connectors; order compression or solder connectors separately.
 - If external grounding and/or shield interrupting is required, order an HVS-EG kit from page 96.
 - Standard package: 1 kit/box.
 - Related test reports:
 - HVS-5-8kV: [EDR-5181](#)
 - HVS 15 kV: [EDR-5114](#)
 - HVS 25 kV: [EDR-5150](#)
 - HVS 25-35 kV: [EDR-5197](#)
 - HVS 1520S-W: [EDR-5225](#)
- Related installation instructions:
[HVS-820S](#) [HVS-1520S](#) [HVS-1520S-W](#)
[HVS-2520S](#) [HVS-3520S](#)