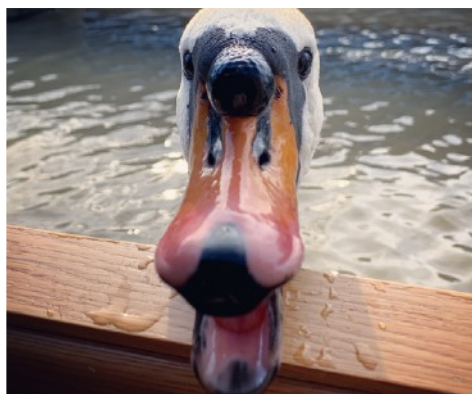


# Narrowboat Silver Fox

Available for sale at offers around £140,000



Shell: Aintree Boats.

Fit-out: Bickerstaffe Boat Ltd.

Length: 57ft (17.37m).

Width: 6ft 10ins (2.08m).

Draught: 2ft 2ins (0.66m).

Air Draught: 6ft (1.83m).

Style: Cruiser Stern.

Launched: May 3rd 2019.

Engine: Vetus M42.

Berths: 2 plus 2.

BSS to May 2023.

Built by Bickerstaffe Boats, recently one of the most sought after boat builders in the country, narrowboat Silver Fox is arguably the most recognised boat on the canal network. Built to the highest standard, she was lovingly created by boatbuilding craftsmen with decades of combined experience. At only two years and four months old she has been meticulously cared for, recently undergoing a refurbishment that included fitting brand new carpets, blinds, toilet and a full external clean and re-blackening.

Silver Fox looks and cruises as great today as she did when she was first launched in May 2019.

- Carpets replaced 20th August 2021.
- Hull re-blackened 26th August 2021.
- Blinds replaced 26th August 2021.
- Engine serviced every 250 hours - Full service history.
- Toilet replaced 22nd August 2021 (in prep for the sale).





The galley includes immaculate oak worktops which have been oiled and cleaned regularly to maintain their appearance. The steel sink features a flexible hot and cold mixer tap with spray function. A pull-out rack draw makes for intelligent use of space and there's plenty of storage in the four roomy cupboards and separate three large, deep drawers.

### **INCLUDED APPLIANCES**

Hoover 1600rpm, AAA+, 7kg, 240V Washing Machine.

Cookworks 700W, Class D, 240V Microwave.

Swan Retro C14, 12V under-counter fridge with freezer box.

Thetford Midi Prima Mk III gas oven and separate grill. 3.1kW.

Thetford Argent three-ring gas hob, with glass cover.

### **Pullman Style Dinette**

Silver Fox features a Pullman Style dinette that features plenty of storage beneath each seat, with added ventilation grills, and space for a potential additional freezer. The dinette table easily collapses and the upholstery lays flat to provide an additional double bed, comfortably sleeping up to two people. There are duck hatches either side of the dinette and a twin 240V electrical socket.







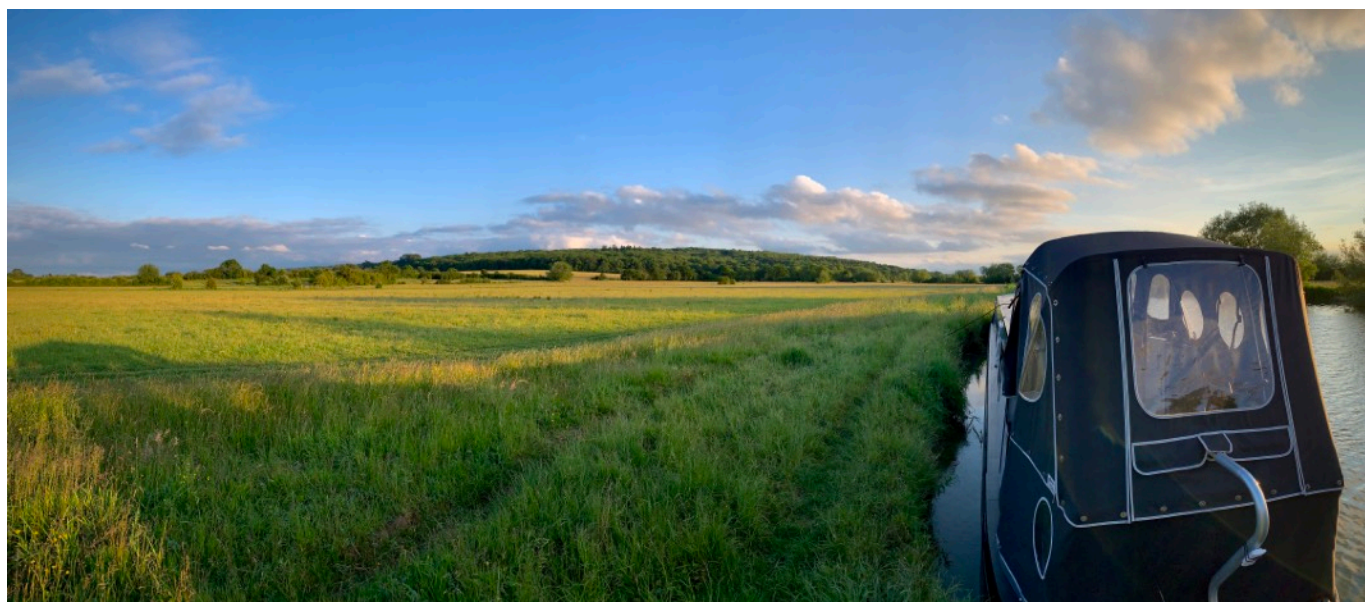
The saloon includes;

- Three-seater grey sofa (Ikea).
- Sharp 40" Smart Television.
- Yamaha Sound Bar.
- Huawei B525 WiFi Router.
- Maxview Aerial Booster.
- Remote Control Energy-Saving Electrical Sockets.
- Aercus Weather Station.
- Morso Squirrel Multi-Fuel Stove.

The spacious saloon easily fits the included three-seater sofa, recently purchased from Ikea. The 40-inch smart television has analogue and Freeview channels in addition to built in digital features and on-demand channels. A Yamaha Dolby Stereo Soundbar is also included in the entertainment system.

Silver Fox has a wired external antenna and Huawei B525 WiFi router located in the saloon. With a SIM card inserted (we pay £20 a month for unlimited data) you can enjoy Internet across the boat and a fair distance outside it too. Wired Ethernet connections are installed to the TV.

The Morso Squirrel stove has been cleaned and refurbished with a recent new grate. You can heat the boat using smokeless fuel and/or seasoned logs, all readily available from chandlers, marinas and fuel boats.





The walk-thru shower room includes a full-size quadrant shower with laminate surround, smooth sliding glass doors, a high-efficiency waste water pump, an adjustable, high-pressure shower head, hot and cold mixer tap and storage.

A porcelain sink with chrome mixer tap sits atop an oak vanity unit with two shelves inside.

A mirror with three further shelves gives additional space to store toiletries.

The shower room also includes a heated chrome towel rail, hand towel rail, toilet roll holder, and shower mat rail. There are blinds and space for an extractor fan.



The original cassette toilet was removed and replaced by a separating toilet from Compoost. This has recently been replaced with the same model to give the new owner a new toilet.

The original space and fixings for a cassette toilet are still in place should the new owner decide to change back to a cassette.







The spacious, luxurious bedroom features a double bed that pulls out to provide a larger king-size bed. Underneath is a huge amount of storage, including two deep drawers. Further storage is included in the large wardrobe with twin rails, double cupboard above the bed, and a corner unit by the bow doors.

A remote control, 32-inch, Panasonic Smart TV with boosted aerial is on a swing bracket at the foot of the bed and there are two 240V and two 12V sockets for charging your phone and other devices or to place an alarm clock.



The bedroom is well ventilated with several grills around the bed and inside the wardrobe. This helps to prevent moisture forming during the colder months. The water pump is located under the bow step along with additional storage space and access to the fresh water tank.

# The Technical Stuff

## Engine

Vetus M-Line M445KP 52 AD.  
42HP, 30.9kW.

## Gearbox

PRM Newage 150 D2.

## Heating

Eberspacher Hydronic Diesel.  
D3 5W4D, 4kW.

## Water Heating

Surcal Calorifier. 75l, 1kW,  
Twin coil T227/RTS.

## Fire Extinguishers

3 x Fire Blitz, 1kg, 8A55B.

## Fire Blanket

Arleigh Kite marked blanket.

## Shower Pump

Whale Gulper 220, 12V.

## Bilge Pump

Rule Mate 500GPH, 12V.

## Water Pump

Jabsco Parmax 2.9 water pressure, 12V.



## Capacities

Fuel Tank (Steel integral).  
Pressure tested to EN ISO 10088/2001  
025Kgf cm<sup>2</sup>.  
Approximately 200 litres (45 gallons).  
Water Tank (Stainless steel).  
Approximately 500 litres (110 gallons).

## Steelwork

Base 10mm.  
Hull 6mm.  
Cabin 5mm.  
Roof 4mm.

## Anodes

6 x Lam Magnesium fitted May 2019.

## Paintwork

Hull and Topsides: Silver (Sprayed).  
Immersed Hull: Two-part epoxy with  
black bitumen double coat.

## LPG Cylinder

Stern lockers, 2 x18kg Propane bottles.  
Continental R37P pressure regulator.



## Galvanic Isolator

Sterling Prosave E.

## Alternators

2 x Vetus 90A, 12V.

## Batteries (Tested Aug 2021)

Engine: 1 x Bosch Goal 12V 90Ah.

Domestic: 6 x Vetus 175Ah AGM sealed.

Bow Thruster: Bosch T303 12V 90Ah.

## Bow Thruster

Vetus 55 KGF.

## Solar

5 x Miasole 125W flexible solar panels.

1 x Victron MPPT 150|35 Controller.

1 x Victron MPPT 75|10 Controller.

## Lighting

LED lighting throughout the boat.

LED under gunwale lighting in Galley, dinette and saloon.

## Electrical Sockets

Stern: 1 x 12V and 2 x USB 12V.

Galley: 2 x 240V and 1 x 240V (washer).

Dinette: 2 x 240V.

Saloon: 4 x 240V and 1 x 12V.

Bedroom: 4 x 240V, 1 x 12V and 2 x USB

## Inverter

Vetus Combi 3000W (3kW) Inverter and charger.



## Toilet

Compoost separating toilet with 12V stirrer and extra bottle and bucket.

## Fit Out

Spray foam insulation.

Vinyl and carpet flooring (Recently replaced).

Marine Ply and moisture resistant MDF lining with oak framings and trim.

## Underfloor

Inspection hatches throughout the boat.

## Cratch and Pram Covers

The cratch and pram covers are removable and washable. Spares and repairs can be attained from Amtrim Covers if required in the future.

## Windows

4 x 90cm x 52cm (Galley and Saloon).

4 x 45cm diameter Portholes (Shower and bedroom) - All have a thermal break.

Hopper windows are made from bonded, toughened safety glass and can be opened or removed. They offer the ultimate in privacy while allowing maximum light into the boat. Each window has an oak lining.

## Side Hatches

Two side hatches with steel doors and moisture resistant MDF linings are positioned either side of the dinette. Both are double locked and have movement detectors installed.

## Dimensions

Overall length: 57ft (17.37m).

Width: 6ft 10ins (2.08m).

Stern Deck: 7ft 4ins (2.26m).

Galley: 10ft 3ins (3.14m).

Dinette: 6ft 5ins (2.0m).

Saloon (exc dinette): 9ft 3ins (2.84m).

Shower room: 6ft 5ins (2.0m).

Bedroom: 9ft 4ins (2.86m).

Well Deck: 3ft 7in (1.13m).



## Smoke & Carbon Monoxide

Smoke and carbon monoxide detectors fitted in the galley and bedroom.

## Security

The boat has a wire-free alarm system with PIRs and door sensors. There's also a Wi-Fi monitored CCTV system installed with notifications when activated

## Maintenance History

Hull last blacked 27th August 2021.

Engine serviced at 50 hours and at every 250 hours thereafter. Full service history included with the boat.

Current engine hours: 1,685.

## Documentation

A BSS Certificate expires 30/4/2023.

A Declaration of Conformity was issued on 30/4/2019.

The boat licence is not transferable and a new license will be required.

Full service history will be provided.

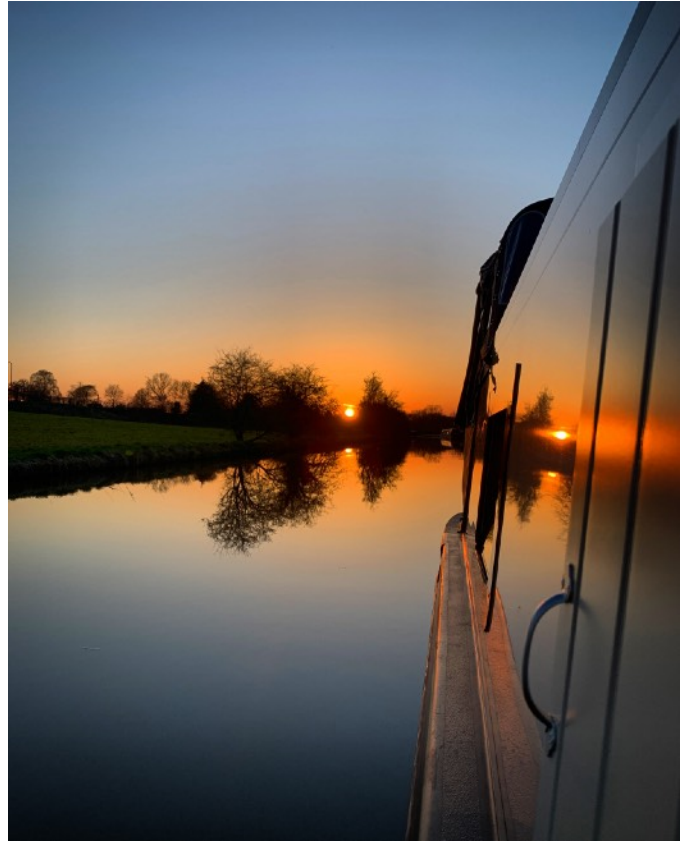


# Interested?

If you'd like further information, or details on anything not included in this sales pack please email us at [foxesafloat@gmail.com](mailto:foxesafloat@gmail.com).

Potential buyers with a serious interest can arrange to view the boat in person (by prior appointment only).

We're looking for offers in the region of £140,000 and would prefer to complete the sale and handover in September or October 2021.



**PLEASE NOTE:** This is sales information and not a survey report, providing content details only. The specification in these pages is based on information provided to us in writing by Bickerstaffe Boats Ltd when we purchased the boat in May 2019. This is to help you decide whether to investigate the boat further, be it by surveyor or otherwise. The information here is given in good faith but no description, statement, or suggestion for future use, constitutes an offer.