

August 4, 2020

HHS Hospital Reporting for COVID-19 via EMResource

An Overview for Hospital Users



OKLAHOMA



Presenters



Grace Pelley, MBA

Trauma Systems & Development Manager

Oklahoma State Department of Health

emresource@health.ok.gov

Patrice Greenawalt, MS, RN

Clinical Initiatives Manager

Oklahoma Hospital Association

pgreenawalt@okoha.com



2020 COVID-19 Data Reporting in Oklahoma

Mar 2020 EMResource COVID data collection initiated

7/13/20 HHS memo on daily COVID data
reporting processes

► *OSDH begins process to modify EMResource*

8/1/20 HHS memo revising PPE reporting frequency

8/5/20 EMResource data collection/submission to HHS
launched

Overview

- ❖ What is EMResource
- ❖ Using EMResource
- ❖ 2020 COVID-19 PHE HHS Hospital Reporting via EMResource

What is EMResource

- ❖ Web-based Communication and Resource Management Tool
- ❖ Hospitals , EMS and Partners
- ❖ Daily Hospital Capability and Capacity
- ❖ Disaster Events

 show map
 print
 excel
 refresh
 help

[illegible]

Regional Map View

refresh help

Update 3: COVID-19 EMS
Emergency Rules:
Requirements and
Conditional Licensing

COVID-19 EMS Survey

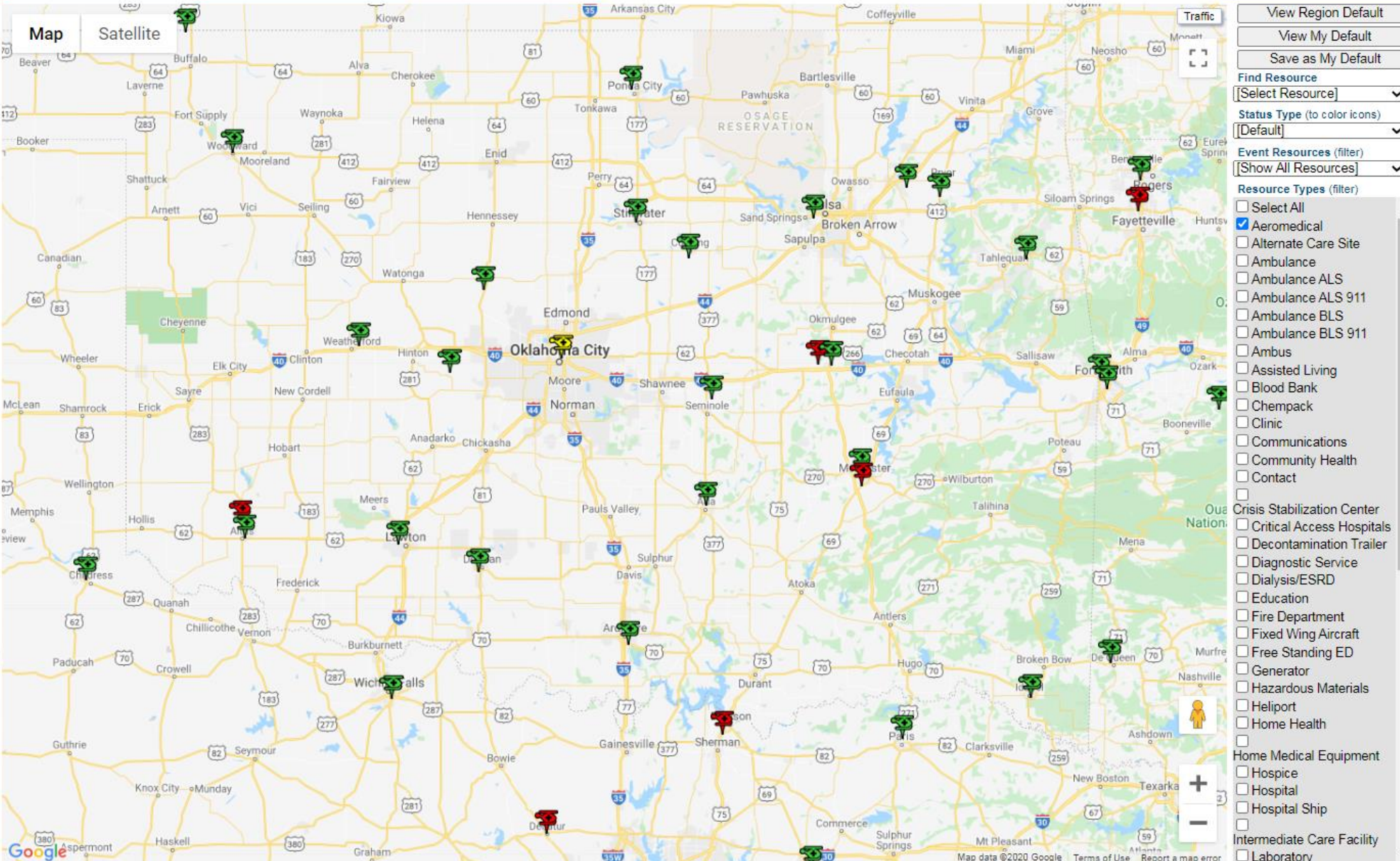
Reminder: Hospital
Surveys due at 1200 daily

3 ST FRANCIS P I & II /
OSUMC-SF SOUTH-P II

3 OUMC

COVID-19 Hospital Bed
Survey (08/03/20)

COVID-19 Hospital
Ventilator & PPE Survey
(08/03/20)




Using EMResource

- ❖ Access – Hospitals, EMS and Partners
- ❖ End User – extended users, customized role
- ❖ Ease of use
- ❖ Training – using the information correctly

2020 COVID-19 Public Health Emergency (PHE) HHS Hospital Reporting

- ❖ Required daily reporting by ALL hospitals*
- ❖ Capacity and Utilization Data – 32 data fields with subsets
- ❖ Testing Data – 16 data fields
- ❖ Daily automatic upload via EMResource

print excel refresh help

 COVID-19 Hospital Ventilator & PPE Survey (08/03/20)

Created By: Anya Grether @ 08/03/20 14:15 CDT
By request of the Commissioner of Health to implement Governor Stitt's Executive Order 2020-20, please complete the survey with your bed capacity and other critical data. Your responses will help support situational assessment and planning activities. This survey is DUE 12 NOON TOMORROW. For questions please call 405-568-9835. For steps to complete the survey, click [Attached File](#). | [Event Details](#) | [Attached File](#)

[illegible]



Event Status

print excel refresh help

 Update 3: COVID-19 EMS
Emergency Rules:
Requirements and
Conditional Licensing

COVID-19 EMS Survey

 Reminder: Hospital
Surveys due at 1200 daily 3 ST FRANCIS-P I & II /
OSUMC-SF SOUTH-P II

3 OUMC

 COVID-19 Hospital
Bed Survey
(08/03/20) COVID-19 Hospital
Ventilator & PPE Survey
(08/03/20)

Created By: Anya Grether @ 08/03/20 14:15 CDT

By request of the Commissioner of Health to implement Governor Stitt's Executive Order 2020-20, please complete the survey with your bed capacity and other critical data. Your responses will help support situational assessment and planning activities. This survey is DUE 12 NOON TOMORROW. For questions please call 405-568-9835. For steps to complete the survey, click Attached File. | [Event Details](#) | [Attached File](#)

	Region 8 (OKC)	Adult ICU Available Beds	Total Adult ICU Beds	Adult ICU- Occupied or Assigned	Med/Surg- Available Beds	Med/Surg- TOTAL Beds	PICU Available Beds	PICU- TOTAL Beds	Pediatric- Available Beds	Pediatric- TOTAL Beds	Psych- Available Beds	Psych- TOTAL Beds	NegFlow Available Beds	NegFlow TOTAL Beds	OR Recovery Beds	OR Recovery- TOTAL Beds	Previous- Day Occupancy Status	Prev Day Total ED Visits	ED Admits- previous 24 hrs 0000- 2359	Seen in Hospital: Self- quarantined	Positive Patients: treated in hospital	COVID- 19 Positive Patients: In ICU	Pt Under Investigation: treated in hosp
	Your Hospital OKC Area (Test Facility)	--	--	--	--	--	--	--	--	--	--	--	--	--	--	--	--	--	--	--	--	--	--
	Summary	0	0	0	0	0	0	0	0	0	0	0	0	0	0	0	0	0	0	0	0	0	0

Status Type	Summary	Total
Adult ICU Available Beds		0
Adult ICU-Occupied or Assigned		0
COVID-19 Positive Patients: In ICU		0
COVID-19 Pt Under Investigation: In ICU		0
ED Admits-previous 24 hrs 0000-2359		0
Med/Surg-Available Beds		0
Med/Surg-TOTAL Beds		0
NegFlow Available Beds		0
NegFlow TOTAL Beds		0
OR Recovery Beds Available		0
OR Recovery-TOTAL Beds		0
PICU Available Beds		0
PICU-TOTAL Beds		0
Pediatric-Available Beds		0
Pediatric-TOTAL Beds		0
Positive Patients: treated in hospital		0
Prev Day Total ED Visits		0
Previous-Day Occupancy Status		0
Psych-Available Beds		0
Psych-TOTAL Beds		0
Pt Under Investigation: treated in hosp		0
Seen in Hospital: Self-quarantined		0
Total Adult ICU Beds		0

Definition

close

Adult ICU Available Beds

Definition: Adult ICU beds that are vacant and which patients can be transported immediately. These beds are licensed, physically available, and staff on hand to attend to the patient who occupies the bed.

Bed Availability

- ☒ **Adult ICU Available Beds:** Adult ICU beds that are vacant and which patients can be transported immediately. These beds are licensed, physically available, and staff on hand to attend to the patient who occupies the bed.

Comment:

- ☐ **Total Adult ICU Beds:** Total number of beds that can support critically ill/injured patients including ventilator support and burn ICU beds.
- ☐ **Adult ICU-Occupied or Assigned:** Number of ICU beds currently occupied or assigned to a patient.
- ☐ **Med/Surg-Available Beds:** Considered as "Ward" beds that is available that are vacant and which patients can be transported into immediately. These beds are licensed, physically available, and staff on hand to attend to the patient who occupies the bed.
- ☐ **Med/Surg-TOTAL Beds:** Total number of what is considered as "Ward" beds.
- ☐ **PICU Available Beds:**  ICU beds for patients 17 years and younger, that are vacant and which patients can be transported immediately. These beds are licensed, physically available, and staff on hand to attend to the patient who occupies the bed.
- ☐ **PICU-TOTAL Beds:** Total number beds that can support critically ill/injured patients, including ventilator support and any Burn ICU beds for patients 17 or younger.
- ☐ **Pediatric-Available Beds:** Ward Medical/Surgical beds for patients 17 and younger.
- ☐ **Pediatric-TOTAL Beds:** Total number of Ward Medical/Surgical beds for patients 17 and younger.
- ☐ **Psych-Available Beds:** Vacant ward beds on a closed/locked psychiatric unit or ward beds where a patient will be attended by a sitter which patients can be transported to immediately.
- ☐ **Psych-TOTAL Beds:** Total number of "Ward" beds on a closed/locked psychiatric unit or ward beds where a patient will be attended by a sitter.
- ☐ **NegFlow Available Beds:** Beds provided with negative airflow, providing respiratory isolation. NOTE: This value may represent available beds included in the counts of other types.
- ☐ **NegFlow TOTAL Beds:** Total number of beds provided with negative airflow, providing respiratory isolation. NOTE: This value may represent available beds included in the counts of other types.
- ☐ **OR Recovery Beds Available:** An operating room (OR) bed that is currently equipped and staffed and could be made available for patient care in a short period of time.
- ☐ **OR Recovery-TOTAL Beds:** Total number of operating room (OR) bed.
- ☐ **Previous-Day Occupancy Status:** Hospital census from the previous day that ended at midnight.
- ☐ **Prev Day Total ED Visits:** Previous day's ED visits (from midnight census). Include all patients who are triaged even if they leave before being seen by a provider.
- ☐ **ED Admits-previous 24 hrs 0000-2359:** Previous day's midnight census
- ☐ **Seen in Hospital: Self-quarantined :** Number of patients and persons under investigation sent home for self-quarantine after being seen in the hospital.
- ☐ **Positive Patients: treated in hospital:** Total number of COVID-19 positive patients being treated in the hospital including those in ICU.
- ☐ **COVID-19 Positive Patients: In ICU:** Number of COVID-19 positive patients currently in ICU.

COVID-19 PHE HHS HOSPITAL DATA REQUEST SUPPORT

OKLAHOMA HOSPITAL & PPE SURVEY Executive Order 2020-20

HOSPITAL BED AVAILABILITY (16)

1. All hospital beds
2. All Adult hospital beds
3. All hospital inpatient beds
4. Adult hospital inpatient beds
5. All hospital inpatient bed occupancy
6. Adult hospital inpatient bed occupancy
7. ICU beds
8. Adult ICU beds
9. ICU bed occupancy
10. Adult ICU bed occupancy
11. Previous day's total ED visits
12. Previous day's total COVID-19 ED visits
13. Critical Staffing shortage today (Y/N)
14. Critical Staffing shortage anticipated within a week (Y/N)
15. Staffing shortage details
16. Med/Surg-Available Beds

COVID-19 CASE DEMOGRAPHICS (29)

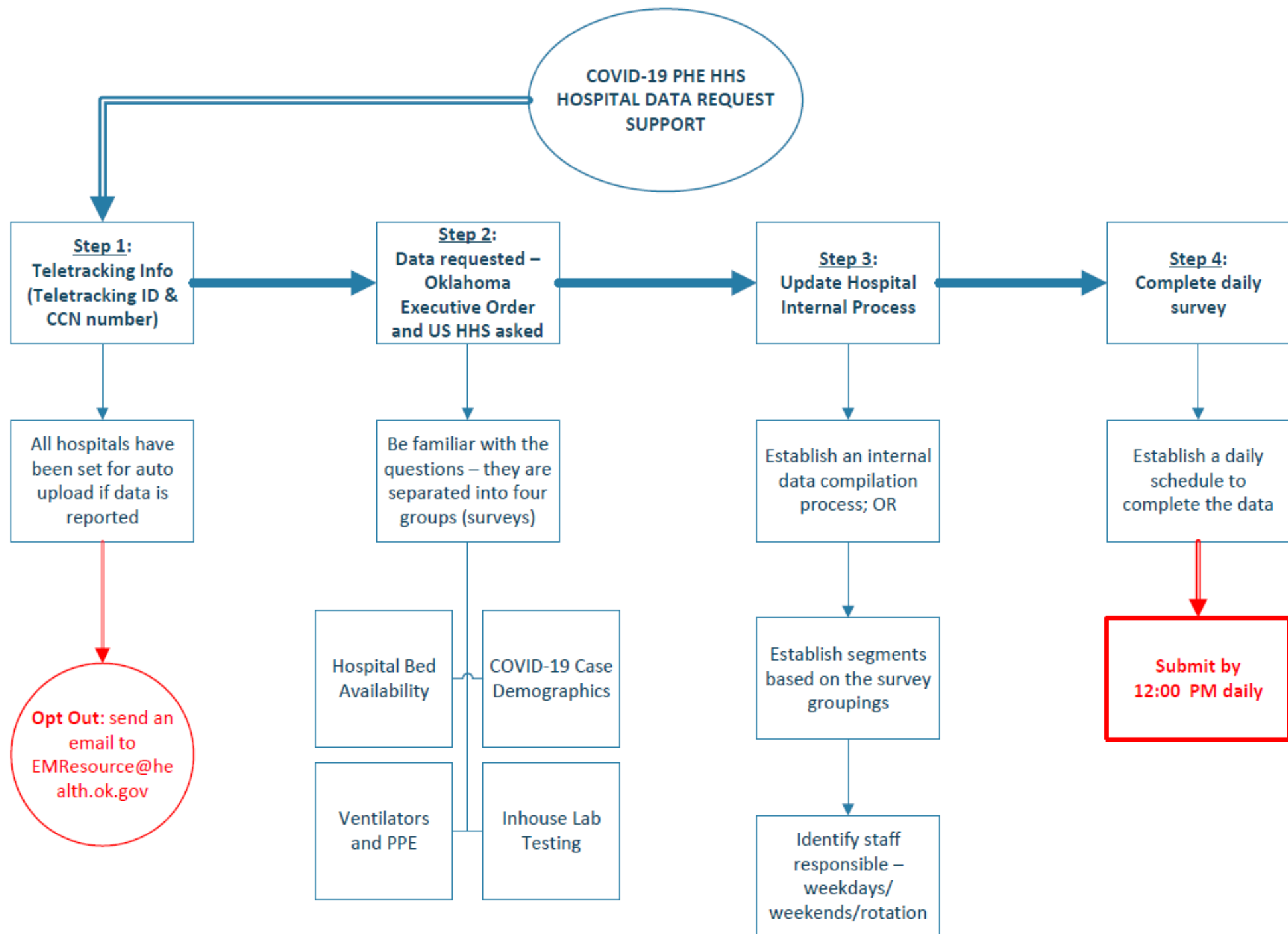
1. Total hospitalized adult suspected or confirmed positive COVID patients
2. Hospitalized adult confirmed-positive COVID patients
3. Total hospitalized pediatric suspected or confirmed positive COVID patients
4. Hospitalized pediatric confirmed-positive COVID patients
5. Hospitalized and ventilated COVID patients
6. Total ICU adult suspected or confirmed positive COVID patients
7. Hospitalized ICU adult confirmed-positive COVID patients
8. Hospital onset
9. ED/overflow
10. ED/overflow and ventilated
11. Previous Day's Deaths
12. Previous day's adult admissions confirmed COVID-19 20-29
13. Previous day's adult admissions confirmed COVID-19 30-39
14. Previous day's adult admissions confirmed COVID-19 40-49
15. Previous day's adult admissions confirmed COVID-19 50-59
16. Previous day's adult admissions confirmed COVID-19 60-69
17. Previous day's adult admissions confirmed COVID-19 70-79
18. Previous day's adult admissions confirmed COVID-19 80+
19. Previous day's adult admissions confirmed COVID-19 unknown
20. Previous day's adult admissions suspected COVID-19 20-29
21. Previous day's adult admissions suspected COVID-19 30-39
22. Previous day's adult admissions suspected COVID-19 40-49
23. Previous day's adult admissions suspected COVID-19 50-59
24. Previous day's adult admissions suspected COVID-19 60-69
25. Previous day's adult admissions suspected COVID-19 70-79
26. Previous day's adult admissions suspected COVID-19 80+
27. Previous day's adult admissions suspected COVID-19 unknown
28. Previous day's pediatric admissions confirmed COVID-19
29. Previous day's pediatric admissions suspected COVID-19

VENTILATORS & PPE (40)

1. Total Mechanical ventilators
2. Mechanical ventilators in use
3. Previous day's Remdesivir Used
4. Current Inventory of Remdesivir
5. Ventilator supplies (days)
6. N95 respirators (days)
7. Other respirators such as PAPRs or elastomers (days)
8. Surgical and procedure masks (days)
9. Eye protection including face shields and goggles (days)
10. Single-use gowns (days)
11. Gloves (days)
12. N95 respirators (units)
13. Other respirators such as PAPRs or elastomers (units)
14. Surgical and procedure masks (units)
15. Eye protection including face shields and goggles (units)
16. Single-use gowns (units)
17. Launderable gowns (units)
18. Gloves (units)
19. Ventilator supplies (any supplies excluding medications): access Y/N
20. Ventilator medications: access Y/N
21. N95 masks: access Y/N
22. Other respirators such as PAPRs or elastomers: access Y/N
23. Surgical and procedure masks: access Y/N
24. Eye protection including face shields and goggles: access Y/N
25. Single use gowns: access Y/N
26. Gloves: access Y/N
27. Launderable gowns-supply Y/N
28. Ventilator supplies (any supplies excluding medications): 3 days Y/N
29. Ventilator medications: 3 days Y/N
30. N95 masks: 3 days Y/N
31. Other respirators such as PAPRs or elastomers: 3 days Y/N
32. Surgical and procedure masks: 3 days Y/N
33. Eye protection including face shields and goggles: 3 days Y/N
34. Single-use gowns: 3 days Y/N
35. Gloves: 3 days Y/N
36. Laboratory – nasal pharyngeal swabs: 3 days Y/N
37. Laboratory –nasal swabs: 3 days Y/N
38. Laboratory –viral transport media: 3 days Y/N
39. Reusable/laundable isolation gowns: Y/N
40. Critical medical supplies/medication shortage: Free text

INHOUSE LAB TESTING (16)

1. New Diagnostic Tests Ordered
2. Cumulative Diagnostic Tests Ordered
3. New Tests Resulted
4. Cumulative Tests Performed
5. New Positive COVID-19 Tests
6. Cumulative Positive COVID-19 Tests
7. New Negative COVID-19 Tests
8. Cumulative Negative COVID-19 Tests
9. New Serological Tests Ordered
10. Cumulative Serological Test Ordered
11. New Tests Performed
12. Cumulative Tests Performed
13. New Positive Serological Tests
14. Cumulative Positive Serological Tests
15. New Negative Serological Tests
16. Cumulative Negative Serological Tests



In Summary ...

- ❖ What is EMResource
- ❖ Using EMResource
- ❖ 2020 COVID-19 PHE HHS Hospital Reporting via EMResource

August 4, 2020

HHS Hospital Reporting for COVID-19 via EMResource

Thank you to the Oklahoma Hospital
Association and Patrice Greenawalt for the
opportunity to support our hospitals in
meeting this HHS Request.



OKLAHOMA



**Thank you for
attention –
Questions?**

**For information or inquiries:
Oklahoma State Dept of Health
PHS – Emergency Systems
1000 Northeast 10th Street,
Oklahoma City, OK 73117
Telephone (405) 271-4027 / Fax
(405) 271-4240
Email
Esystems@health.ok.gov**

