



# 2021

## HEAVY — EQUIPMENT

ELASTO  
PROXY 

ELASTOPROXY.COM



### CANADA

4035 Lavoisier Rue  
Boisbriand, Québec,  
Canada  
J7H 1N1

Phone: (450) 434-2744  
Fax: (450) 434-5998

### CANADA

1145 Nicholson RD Unit 3  
Newmarket, Ontario,  
Canada  
L3Y 9C3

Phone: (905) 898-1139  
Fax: (905) 898-1004

### USA

1021-C Old Stage Road  
Simpsonville, South  
Carolina, USA  
29681-6044

Phone: (864) 228-5900  
Fax: (864) 963-8992

### BELGIUM

Heimolenstraat 127A  
Box 5, 9100 Sint-Niklaas

Phone: +32 (0) 3 301 01 83

# TABLE OF CONTENT

OUR STORY	3
OUR COMMITMENTS	4
CLIENT TESTIMONIALS	5
PRODUCT OFFERING	6
OUR TECHNOLOGY	7
ADDED VALUE SERVICES	8
FABRICATION SERVICES	10
INDUSTRIES WE SERVE	13
HEAVY EQUIPMENT	14
HEAVY EQUIPMENT OEM	16
DISCOVER OUR SEALS	18
BULB TRIM SEALS	20
BUMPERS	28
DUAL DUROMETER	29
EDGE TRIM	31
SOLID PROFILES	34
SPONGE PROFILES	39
WINDOW CHANNEL	46



# OUR STORY

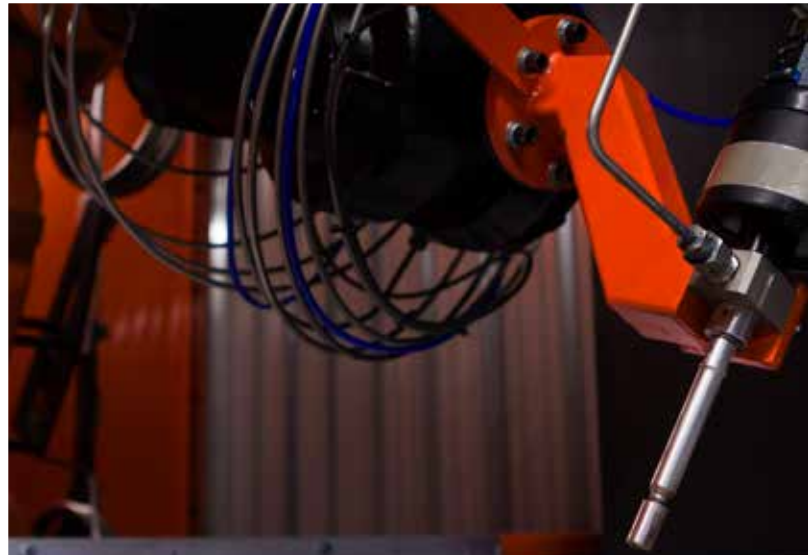
Elasto Proxy is a family-owned company with deep roots, strong business relationships, and a growing global presence in the rubber and plastics industry. Founded in 1989 by Doug and Donna Sharpe, this “Mom and Pop shop” flourished in Quebec, Canada before expanding first to the Canadian province of Ontario and then to South Carolina in the United States. Today, we’re expanding our innovative business philosophy in Europe, where Elasto Proxy’s technical services and application knowledge will satisfy customers in the fastgrowing market.

# OUR VALUE

Core values describe what we believe and guide the way that we act. These deeply-held values also serve as a mirror of sorts. When a company’s behavior reflects its core values, employees see this consistency. Customers and vendors recognize integrity, too. Inside and out, a company needs to be true in both word and deed. That’s why at Elasto Proxy, we

don’t just talk about our core values. We show you who we are in all that we do.

Maybe you’ve done business with Elasto Proxy for years. Maybe you’re a new customer or vendor. Regardless, we’d like you to know more about who we are and what our core values mean for you. Elasto Proxy is a growing, global company that’s powered by problem solvers. We’re also engaged, professional, and loyal. Regular readers of our blog have come to appreciate our application knowledge and technical expertise. But do you know how our core values support your success?





# OUR COMMITMENT

When Elasto Proxy makes a commitment, we promise to fully understand your needs and deliver on them. It begins with listening to you and analyzing your needs. It continues by comparing our production capabilities to your application requirements. Unlike other fabricators of industrial rubber products, Elasto Proxy is your partner in the manufacturing process.

We only accept the jobs we can do, and we always complete them to the highest standards. Business relationships are commitments, and we promise to act on your behalf and serve your interests. So let Elasto Proxy apply its flexible and innovative application knowledge for you. Choose a partner – not just a provider.



# CLIENT TESTIMONIALS

**MARCO FERNANDEZ**  
STRATEGIC BUYER AT VAPOR  
STONE RAIL SYSTEMS

Elasto Proxy has a proactive team that focuses on customer service. They give honest and quick answers to our questions, and also have an array of high-quality products that are supported by a high-caliber professional team

**JEAN-MARC FERRI**  
SOURCING MANAGER AT ALTO  
DESIGN INC.

Over the years, Elasto Proxy has distinguished themselves as a top supplier. Their team contributed to the development of solutions for our challenges many times and their expertise was very much appreciated.

**JEFF MILLION**  
CORPORATE STAFF AT SIGNAL  
PRODUCTS

Not only did they offer us a great quality product at a better price than our previous supplier, but they were able to provide additional savings by bringing the product into the Elasto Proxy warehouse and shipping it to us in releases, thus reducing our inventory carrying cost.

# PRODUCT OFFERING

## PUSH ON PROFILES

- Bulb Trim
- Edge Trim
- U-Channel
- Window Channel



## MOLDED PARTS

- Bumpers
- Vibration Mounts
- Molded Plastic & Rubber Parts



## MECHANICALLY FASTENED PROFILES

- E-Shape Profiles
- P-Shape Profiles



## ADHESIVE BACKED PROFILES

- Sponge Profiles
- D-Shape Profiles



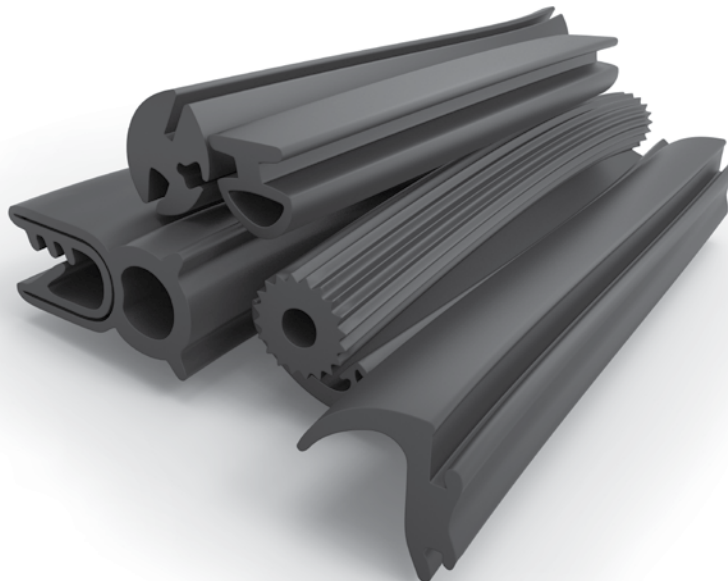
## INSULATION & SHEETING

- Cab Insulation
- Floor Matting
- Engine Insulation



## OTHER PRODUCTS

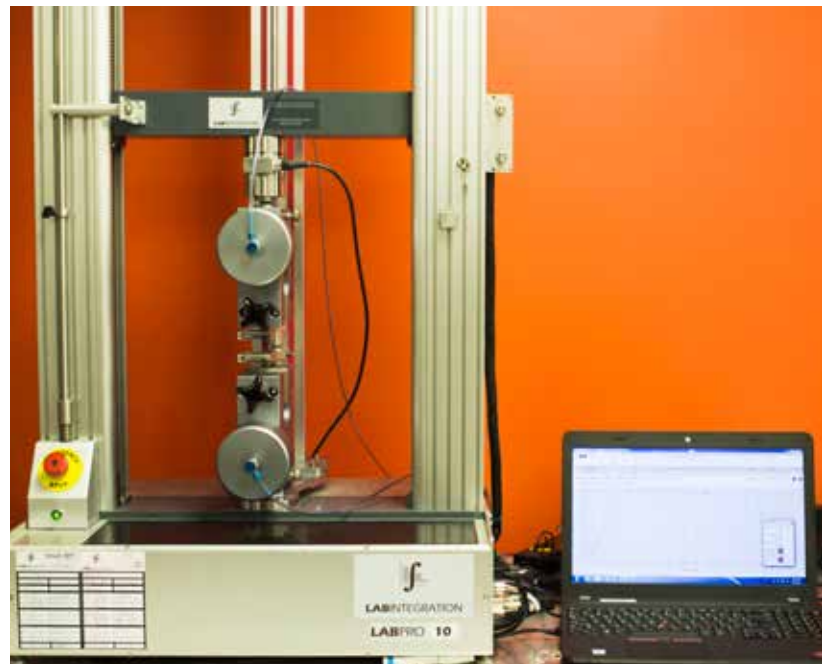
- Tubing
- Weather Stripping
- Silicone Hose Connectors



# OUR TECHNOLOGY

- Abrasive Waterjet Cutting Machine
- CNC Waterjet Cutting Machine
- "C-Press" Molding Machine
- Film Splicing Machine

- Vulcanizing Machine
- PSA + HSA Taping Machine
- Acoustic Laboratory





## ADDED VALUE SERVICES

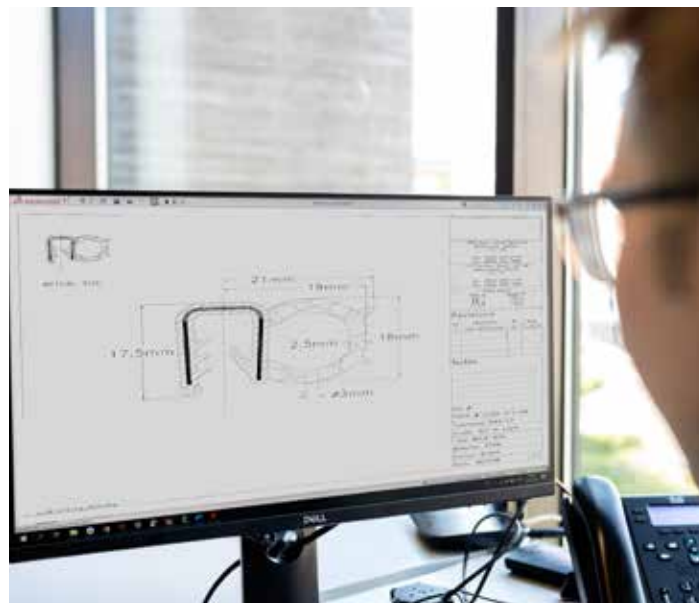




# ADDED VALUE SERVICES

## WAREHOUSING

Warehousing adds value to your operations because Elasto Proxy holds quantities of your stock and can custom-fabricate products according to your sales forecast or on-demand. By buying higher volumes of materials, you can take advantage of volume discounts from material suppliers. You can also ensure that the materials you need are available when it's time for Elasto Proxy to custom-fabricate them.



## DESIGN EXPERTISE.

Elasto Proxy solves design challenges by custom fabricating plastic and rubber components that meet all of your technical requirements. Innovative and flexible, our experienced technical services team has the application knowledge and dedication to craftsmanship to design industrial products that are both cost-effective and high-quality.

## KITTING & SPECIAL PACKAGING

Kitting simplifies ordering and receiving, reduces freight costs, speeds picking, and optimizes assembly. To reduce costs and increase efficiency, the OEM begins ordering kits that contain all of the cabin components for a specialty vehicle. Each kit arrives in its own box, but there are fewer shipments since the boxes are shrink-wrapped together and arrive on a freight pallet. Instead of stocking 15 separate parts, inventory personnel just put individual boxes on a shelf. Then, when it's time for assembly, there's no hunting for the right parts to pick.



# FABRICATION SERVICES



# FABRICATION SERVICES

## WATER JET

Abrasive water jet cutting mixes water with garnet abrasive in a high-pressure, high-velocity stream that can cut harder, thicker materials such as sheets and profiles made of rubber, plastic, metal, stone, and glass.

Elasto Proxy uses this form of water jet technology to cut:

- Hard materials
- Thick, soft materials
- Rubber products that contain metal wires



## LAMINATING

Laminating creates custom insulation sandwiches, composite structures that contain multiple layers of rubber sheets that impart particular properties. Depending on your application requirements, Elasto Proxy can create acoustic insulation, thermal insulation, or thermal-acoustic insulation.

## BONDED GASKETS

Bonding joins the ends of rubber profiles into finished gaskets. Examples include bezel or picture-frame style gaskets, rounded gaskets, and O-rings.

Elasto Proxy offers a choice of bonding methods:

- Hot Splicing
- Vulcanizing
- Cold Bonding
- Molding





## INDUSTRIES WE SERVE



# INDUSTRIES WE SERVE

## AGRICULTURE

- Tractors
- Combines
- Harvesters
- Tree Shakers
- Planters
- Balers
- Chaser Bin Equipment

## FORESTRY

- Delimber
- Yarder
- Feller Buncher
- Harvester
- Skidder
- Track Harvester
- Wheel Forwarder
- Wheel Skidder

## CONSTRUCTION

- Excavator
- Bulldozer
- Backhoe
- Dragline Excavator
- Graders
- Wheel Tractor Scraper
- Trenchers
- Loaders
- Tower Cranes
- Pavers
- Compactors
- Telehandlers
- Feller Bunchers
- Dump Trucks
- Pile Boring Machine
- Pile Driving Machine
- Road Patching Machine

## MINING

- Draglines
- Shovels
- Loaders

## EMERGENCY VEHICLE

- Police Vehicles
- Fire Trucks
- Ambulances

## GROUND SERVICE EQUIPMENT (GSE)

- Pushback Tractors
- Belt Loaders
- Container Loaders
- Potable Water Trucks
- Lavatory Trucks
- Container loader

## OTHER

- Snowcats
- Hydrovac Trucks
- Snow Groomers
- Solid Waste Handling Trucks

# HEAVY EQUIPMENT





# HEAVY EQUIPMENT



Elasto Proxy supplies sealing and insulation products to the heavy equipment industry. For over 30 years, we've provided original equipment manufacturers (OEMs) with low-to-medium volumes of rubber and plastic parts. Whether you need on-road or off-road solutions, we combine custom fabrication with value-added services you won't find anywhere else.

At Elasto Proxy, we keep plenty of rubber profiles in stock so that we can fabricate parts like door and window seals on-demand or in response to your sales forecasts. We also stock sheet materials so that we can provide you with standard or custom insulation that reduces heat and sound from the engine bay. If you need molded rubber or plastic parts like hoses or bellows, we can source them for you as well. When you work with Elasto Proxy, we'll review your part designs and offer recommendations that can improve performance. From advice about part tolerances to help with material selection, we can help you to avoid pitfalls such as choosing the wrong rubber or specifying difficult dimensions. We can also share CAD files from our catalog of standard parts so that you can apply them to your heavy equipment designs. For custom-fabricated products, Elasto Proxy uses water jet equipment to cut materials with speed, accuracy, and precision. From straight lines and small holes to angles and beveled edges, you'll love the quality and consistency that water jet cutting provides. Plus, because there's no metal tooling, you'll save time and money. If you've been cutting by hand, say goodbye to jagged edges and excessive waste.

With finished gaskets, Elasto Proxy offers a choice of bonding methods and can apply peel-and-stick tapes to help speed installation. With sheet materials, our lamination services can build sandwich-style structures using acoustical and/or thermal materials. You'll get the right balance of properties to keep heavy equipment operators safe and comfortable.



As a value-added manufacturer, Elasto Proxy can also mark your parts so that they're easier to identify. We can then package together all of the rubber and plastic components that an installer needs for a build. By arranging them in order of assembly, the box we ship promotes production efficiency. For just-in-time inventory, this box can even travel right from your receiving dock to your assembly line.

The benefits of partnering with Elasto Proxy doesn't end there. With our purchasing power, you can get lower minimum order quantities. With our warehouses, we can hold raw materials or finished goods for when you need them. As more heavy equipment OEMs are seeing, Elasto Proxy has the products and solutions they've been looking for.

# ELASTO PROXY PRODUCTS AND SOLUTIONS FOR HEAVY EQUIPMENT OEM





# HEAVY EQUIPMENT



## INTERIOR & CABIN FINISHINGS

Keep operators safe and comfortable while protecting equipment interiors from demanding conditions. Choose quality components for cabins and interiors.

- Door Seals
- Window Gaskets
- Acoustic & Thermal Insulation
- Headliner & Interior Finishing
- Bellows & Shifter Boots
- Floor Mats & Step Tread
- Control & Button Covers
- Brake and Pedal Covers



## EXTERIOR FINISHINGS

Seal out wind, water, and weather while stopping shock, impact, vibration, and abrasion. These exterior rubber products are made with quality and built to last.

- Access Door Seals
- Anti-Vibration Pads & Mounts
- Mudshield/Debris Guards
- Acoustic Insulation
- Rubber Grommets
- Bumpers



## ENGINE BAY FINISHINGS

Surround your powerplant with reliable solutions that promote performance. These engine bay products seal, shield, connect, and protect in tough environments.

- Environmental Seals
- Thermal Engine Bay Insulation
- Silicone Hose Connectors
- Engine Heat Shields
- Rubber Hose Clamps
- Formed Hoses
- Grommets
- Hood Seals

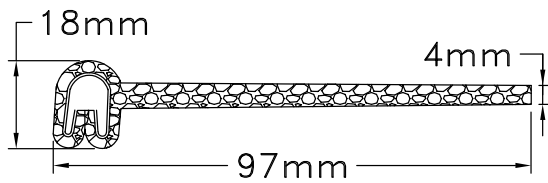


## DISCOVER OUR SEALS





# BULB TRIM SEALS



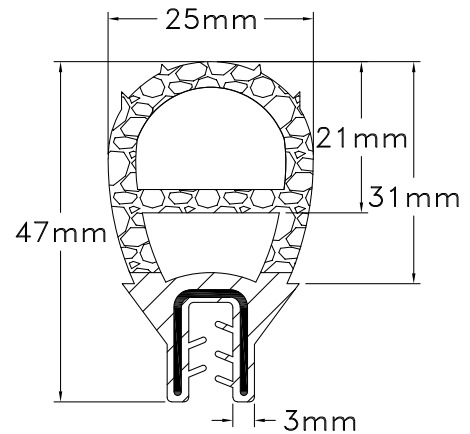
## BULB TRIM SEALS PART #: EC28-100-EM

Tolerance: RMA-BEC2

Material: EPDM Sponge

Color: Black

Density: Medium



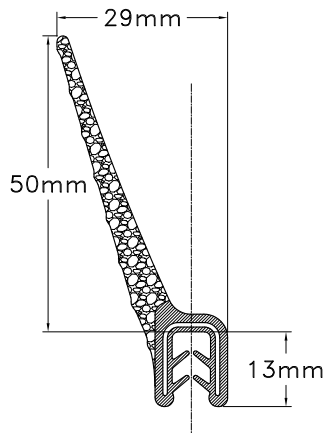
## BULB TRIM SEALS PART #: EC28-112-EM

Tolerance: As Shown

Material: EPDM

Color: Black

Density: Dual-Duro



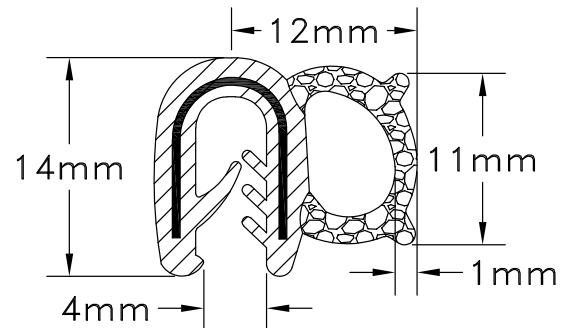
## BULB TRIM SEALS PART #: EC28-200-EM

Tolerance: N/A

Material: EPDM

Color: N/A

Density: DUAL



## BULB TRIM SEALS PART #: EC28-201-EM

Tolerance: RMA-E2

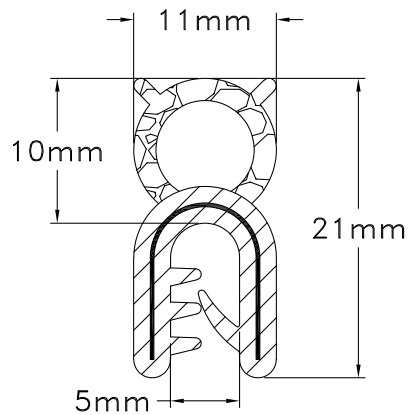
Material: EPDM

Color: Black

Density: N/A



# BULB TRIM SEALS



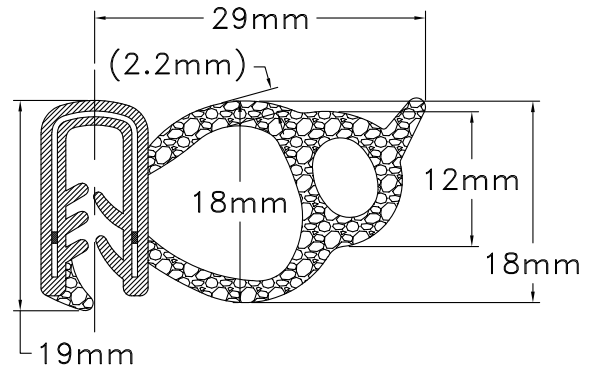
**BULB TRIM SEALS**  
**PART #: EC28-204-EM**

Tolerance: RMA-E2

Material: EPDM

Color: Black

Density: Medium



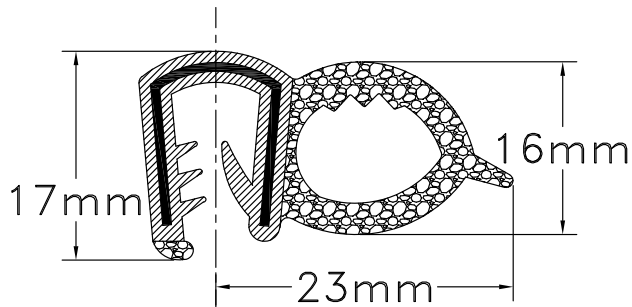
**BULB TRIM SEALS**  
**PART #: EC28-208-EM**

Tolerance: RMA-E2

Material: EPDM

Color: Black

Density: Medium



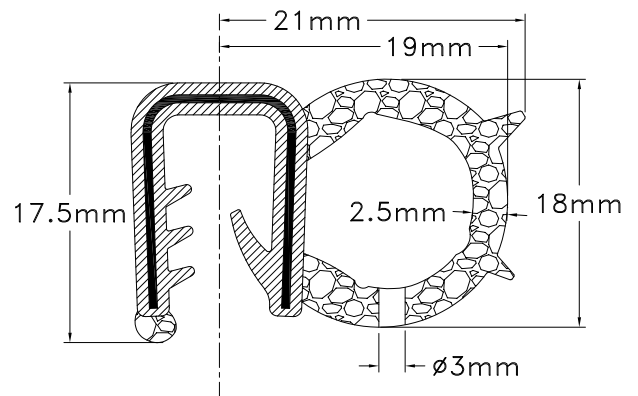
**BULB TRIM SEALS**  
**PART #: EC28-210-EM**

Tolerance: RMA-E2

Material: EPDM & EPDM Med. Sponge

Color: Black

Density: Dual



**BULB TRIM SEALS**  
**PART #: EC28-212-EM**

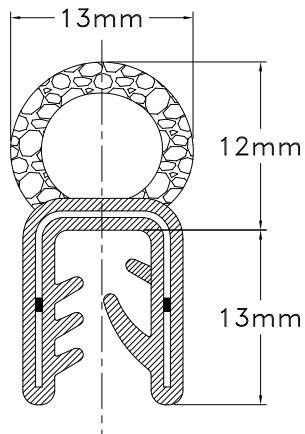
Tolerance: RMA-E3

Material: EPDM

Color: Black

Density: Medium

# BULB TRIM SEALS



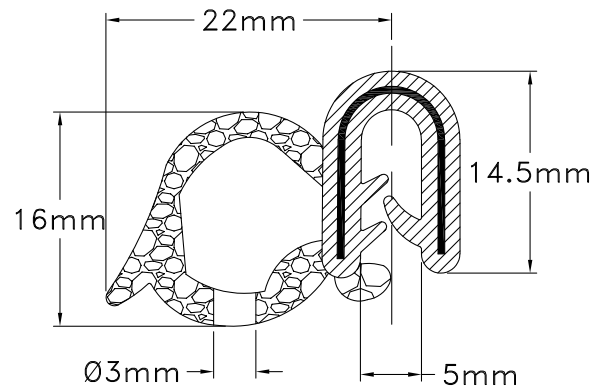
**BULB TRIM SEALS**  
**PART #: EC28-213-EM**

Tolerance: RMA-E2

Material: EPDM

Color: Black

Density: Dual-Duro



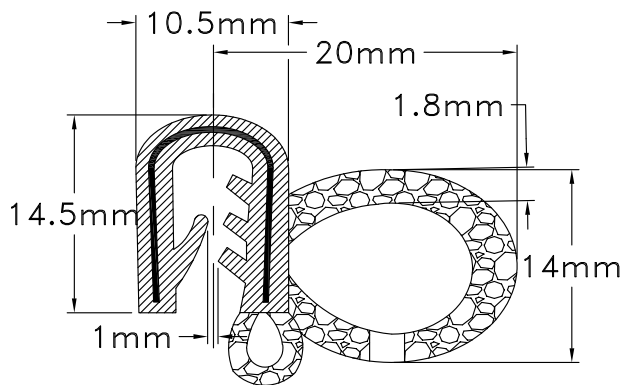
**BULB TRIM SEALS**  
**PART #: EC28-215-EM**

Tolerance: RMA-E2

Material: EPDM

Color: Black

Density: Medium



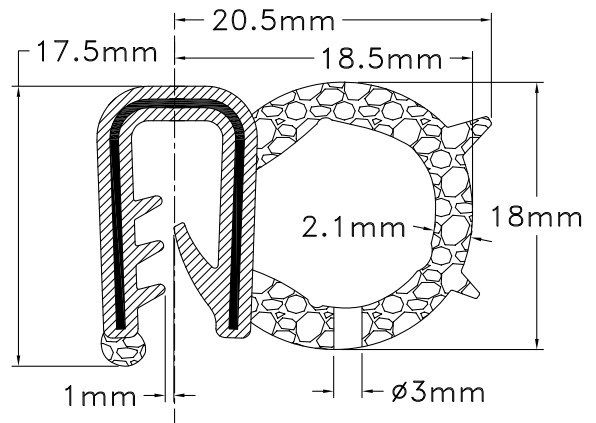
**BULB TRIM SEALS**  
**PART #: EC28-220-EM**

Tolerance: RMA-E2

Material: EPDM Sponge

Color: Black

Density: Medium



**BULB TRIM SEALS**  
**PART #: EC28-222-EM**

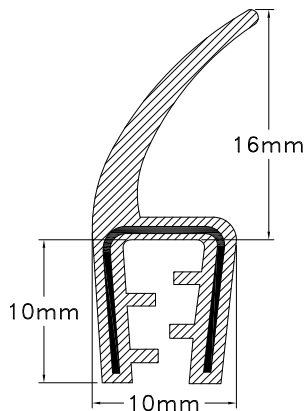
Tolerance: RMA-E3

Material: EPDM

Color: Black

Density: Medium

# BULB TRIM SEALS



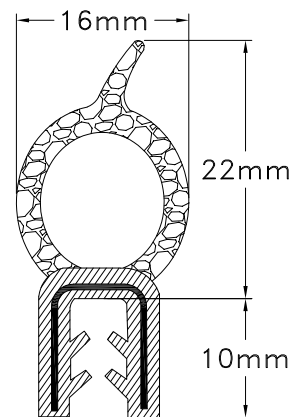
**BULB TRIM SEALS**  
**PART #: EC28-230-EM**

Tolerance: RMA-E2

Material: EPDM Solid

Color: Black

Density: 70 ±5



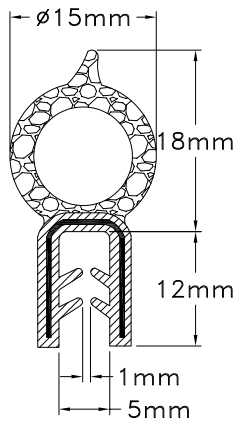
**BULB TRIM SEALS**  
**PART #: EC28-240-EM**

Tolerance: RMA-E2

Material: EPDM

Color: Black

Density: Dual



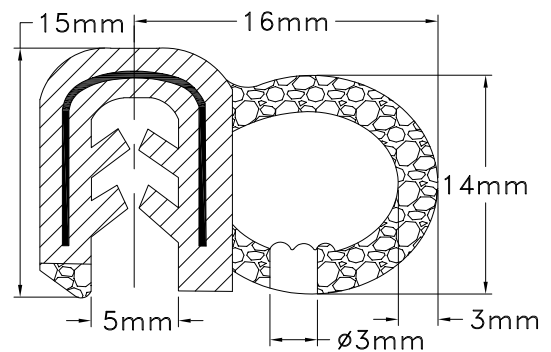
**BULB TRIM SEALS**  
**PART #: EC28-250-EM**

Tolerance: RMA-E2

Material: EPDM

Color: Black

Density: Medium



**BULB TRIM SEALS**  
**PART #: EC28-260-EM**

Tolerance: RMA-E2

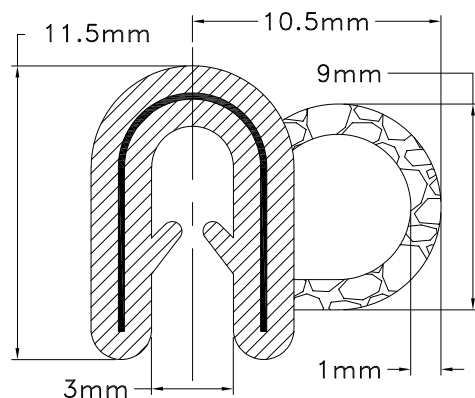
Material: EPDM

Color: Black

Density: Dual



# BULB TRIM SEALS



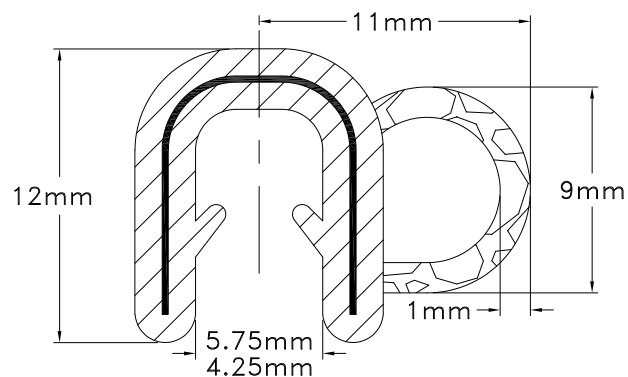
## BULB TRIM SEALS PART #: EC28-270-EM

Tolerance: As Shown

Material: EPDM

Color: Black

Density: Dual



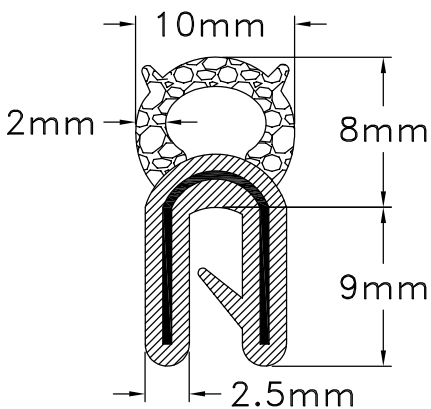
## BULB TRIM SEALS PART #: EC28-271-EM

Tolerance: As Shown

Material: EPDM

Color: Black

Density: Dual



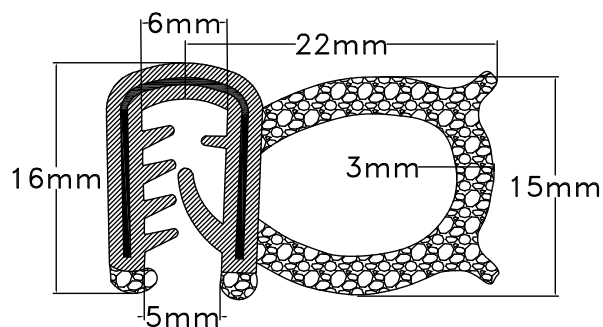
## BULB TRIM SEALS PART #: EC28-274-EM

Tolerance: RMA-E2

Material: EPDM

Color: Black

Density: Dual



## BULB TRIM SEALS PART #: EC28-280-EM

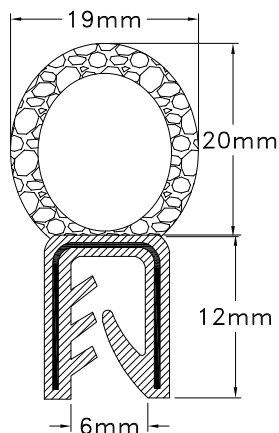
Tolerance: RMA-E2

Material: EPDM

Color: Black

Density: Dual

# BULB TRIM SEALS



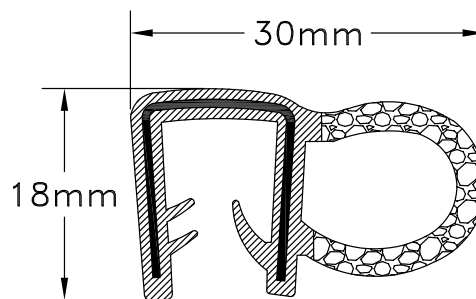
**BULB TRIM SEALS**  
**PART #: EC28-290-EM**

Tolerance: RMA-E3

Material: EPDM

Color: Black

Density: Dual



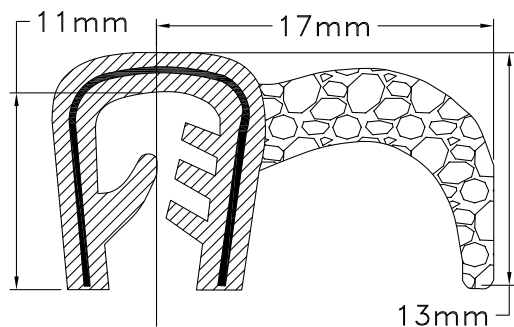
**BULB TRIM SEALS**  
**PART #: EC28-315-EM**

Tolerance: RMA-E2

Material: EPDM

Color: Black

Density: Dual



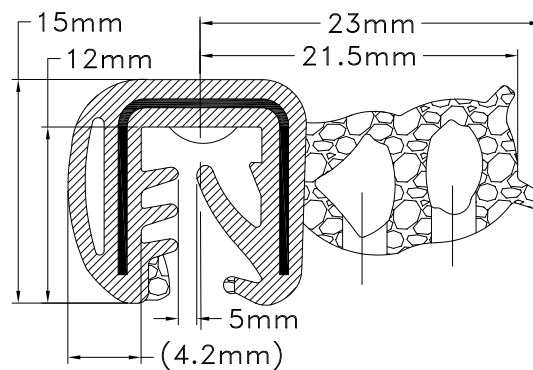
**BULB TRIM SEALS**  
**PART #: EC28-320-EM**

Tolerance: RMA-E3

Material: EPDM Sponge

Color: Black

Density: Dual



**BULB TRIM SEALS**  
**PART #: EC28-405-EM**

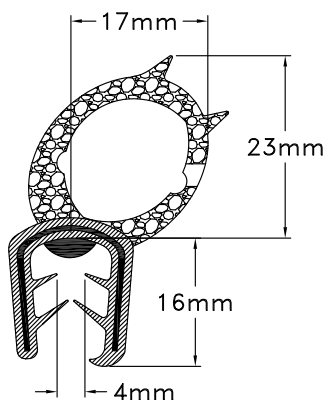
Tolerance: As Shown

Material: EPDM

Color: Black

Density: Dual

# BULB TRIM SEALS



## BULB TRIM SEALS

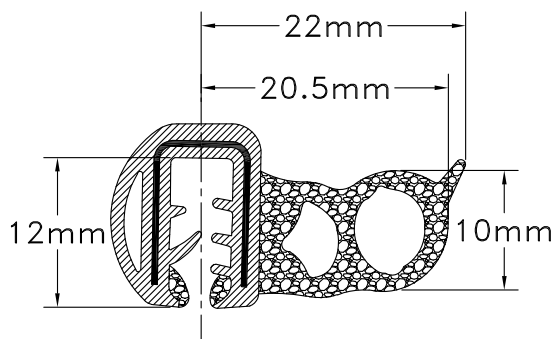
PART #: EC28-410-EM

Tolerance: As Shown

Material: EPDM

Color: Black

Density: 70 ±5



## BULB TRIM SEALS

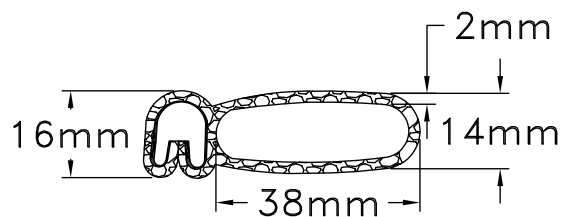
PART #: EC28-415-EM

Tolerance: RMA-E2

Material: EPDM

Color: Black

Density: Dual-Duro



## BULB TRIM SEALS

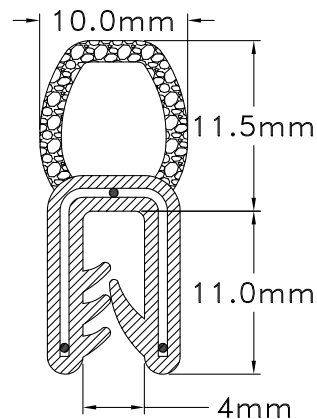
PART #: EC28-420-EM

Tolerance: RMA-E2

Material: EPDM Sponge

Color: Black

Density: Medium



## BULB TRIM SEALS

PART #: EC28-503-EM

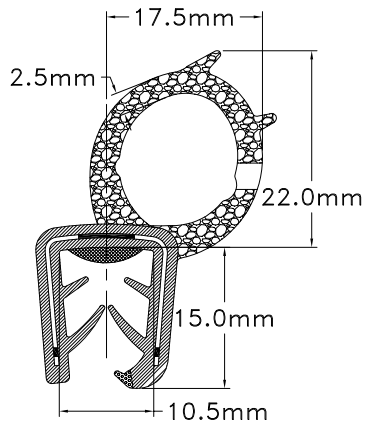
Tolerance: RMA-E2

Material: EPDM

Color: Black

Density: Medium

# BULB TRIM SEALS



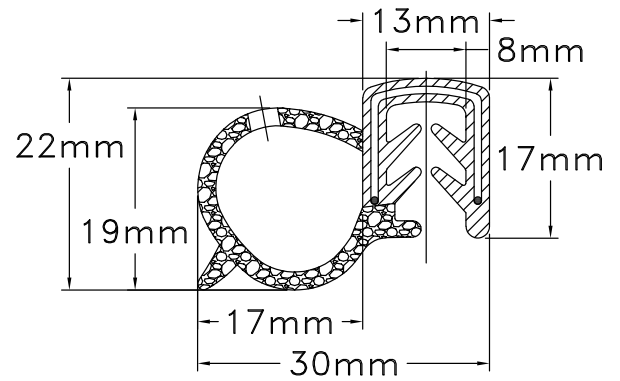
**BULB TRIM SEALS**  
**PART #: EC28-511-EM**

Tolerance: As Shown

Material: EPDM

Color: Black

Density: Dual



**BULB TRIM SEALS**  
**PART #: EC28-975-EM**

Tolerance: RMA-E2

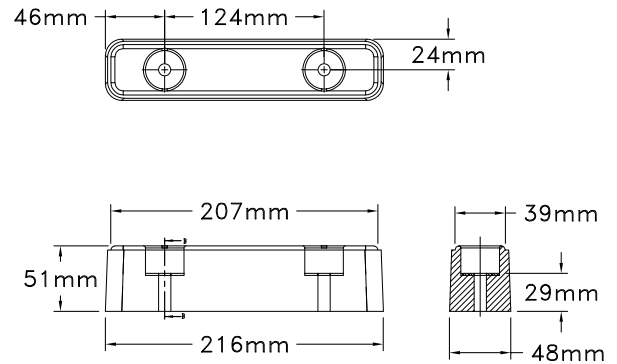
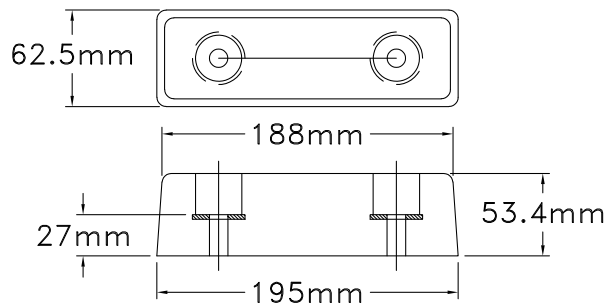
Material: EPDM

Color: Black

Density: Dual-Duro



# BUMPERS



## BUMPERS

### PART #: MB-220-C80

Tolerance: RMA-A2

Material: SBR

Color: Black

Durometer: 80  $\pm$ 5

## BUMPERS

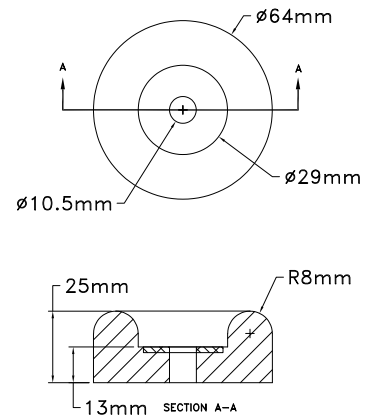
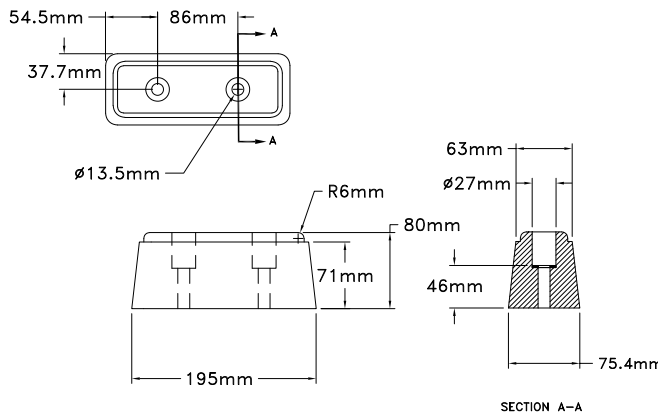
### PART #: MB-230-C80

Tolerance: RMA-A2

Material: SBR

Color: Black

Durometer: 80  $\pm$ 5



## BUMPERS

### PART #: MB-240-C80

Tolerance: RMA-A2

Material: SBR

Color: Black

Durometer: 80  $\pm$ 5

## BUMPERS

### PART #: MB-290-C80

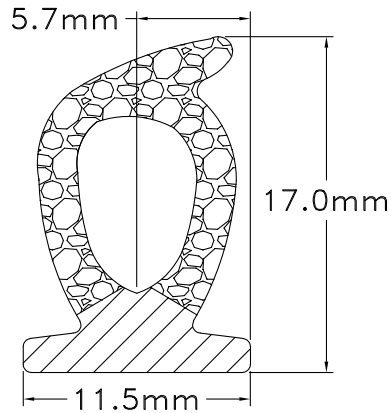
Tolerance: RMA-A2

Material: SBR

Color: Black

Durometer: 80  $\pm$ 5

# DUAL DUROMETER



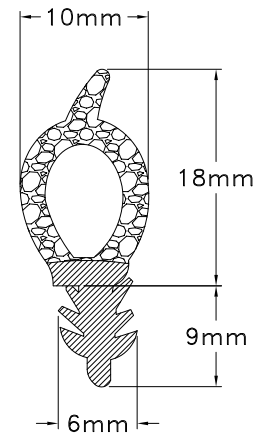
**DUAL DUROMETER**  
**PART #: EC04-100-EM**

Tolerance: RMA-E2

Material: EPDM

Color: Black

Density: Dual-Duro



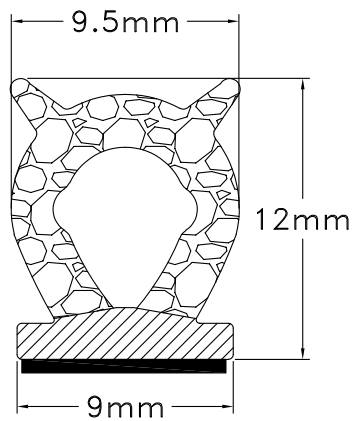
**DUAL DUROMETER**  
**PART #: EC04-105-EM**

Tolerance: RMA-BEC2

Material: EPDM Sponge

Color: Black

Density: Medium



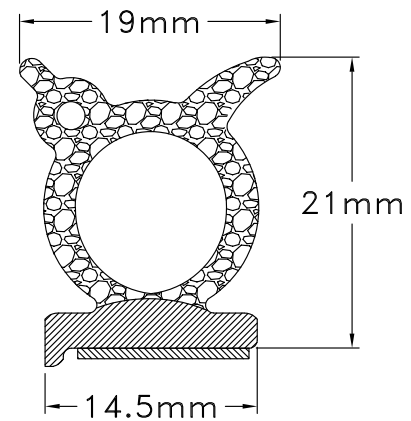
**DUAL DUROMETER**  
**PART #: EC04-122-EMT1**

Tolerance: RMA-E2

Material: EPDM

Color: Black

Density: Medium



**DUAL DUROMETER**  
**PART #: EC04-190-EMT1**

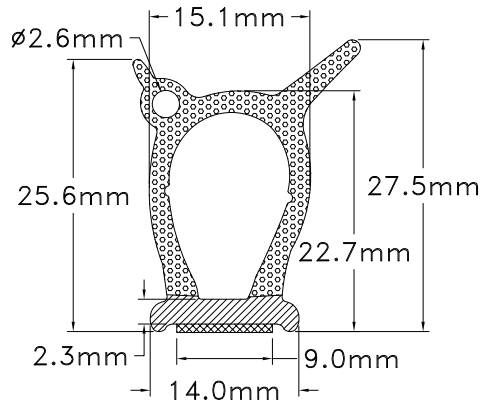
Tolerance: RMA-BEC2

Material: EPDM Sponge

Color: Black

Density: Medium

# DUAL DUROMETER



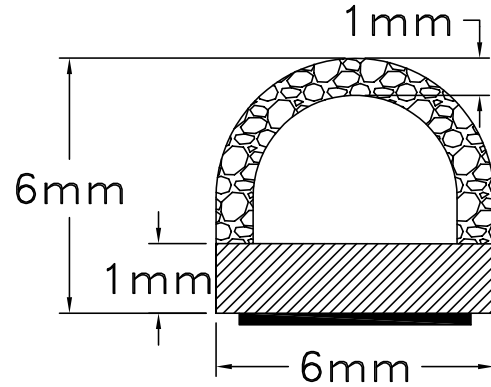
## DUAL DUROMETER PART #: EC04-597-EMT1

Tolerance: As Shown

Material: EPDM

Color: Black

Density: Dual



## SPONGE PROFILES PART #: EC12-443-PMT

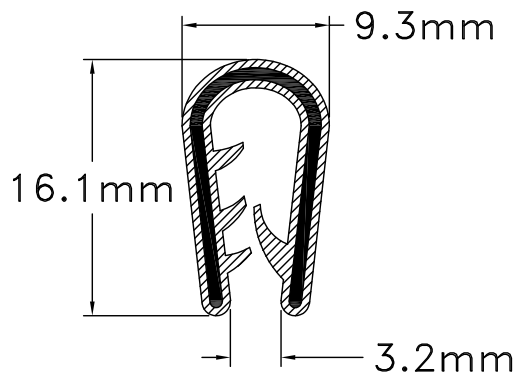
Tolerance: RMA-E2

Material: Plastic

Color: Black

Density: Medium

# EDGE TRIM



## EDGE TRIM

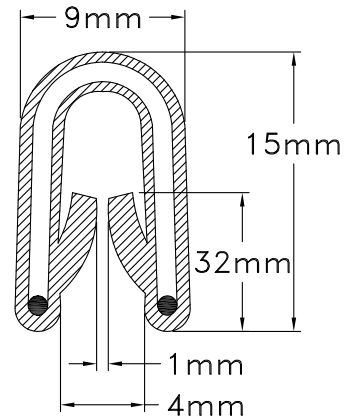
PART #: ES28-110-P60

Tolerance: RMA-E2

Material: PVC

Color: Black

Durometer: 60 ±5



## EDGE TRIM

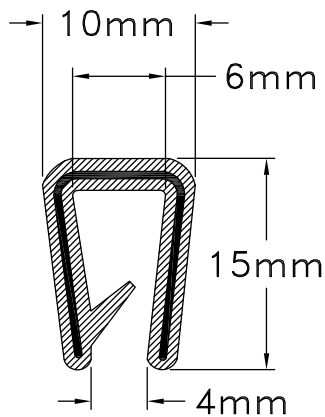
PART #: ES28-122-P80

Tolerance: RMA-E2

Material: PVC Vinyl

Color: Black

Durometer: 80 ±5



## EDGE TRIM

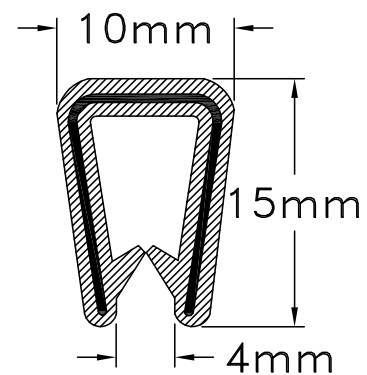
PART #: ES28-126-P60

Tolerance: RMA-E2

Material: Vinyl

Color: Black

Durometer: 60 ±5



## EDGE TRIM

PART #: ES28-128-P60

Tolerance: RMA-E2

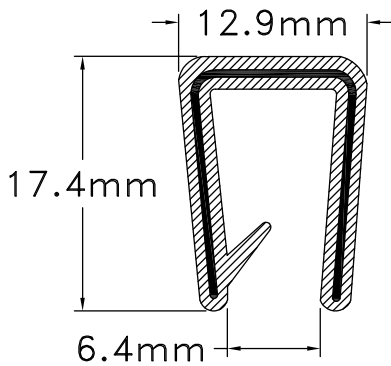
Material: Vinyl

Color: Black

Durometer: 60 ±5



# EDGE TRIM



## EDGE TRIM

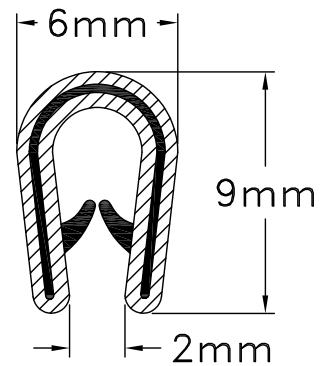
PART #: ES28-132-P80

Tolerance: RMA-E2

Material: Vinyl

Color: Black

Durometer: 80  $\pm$ 5



## EDGE TRIM

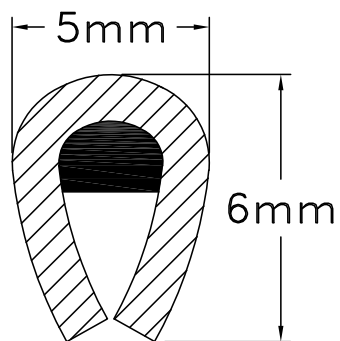
PART #: ES28-140-P80

Tolerance: RMA-E2

Material: PVC

Color: Black

Durometer: 80  $\pm$ 5



## EDGE TRIM

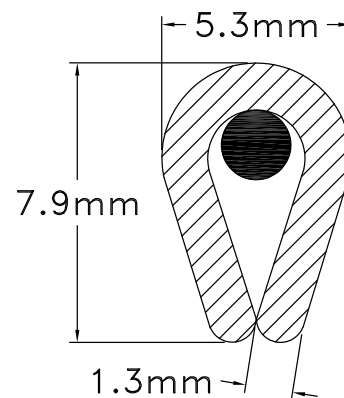
PART #: ES28-186-P80

Tolerance: RMA-E2

Material: PVC

Color: Black

Durometer: 80  $\pm$ 5



## EDGE TRIM

PART #: ES28-210-P80

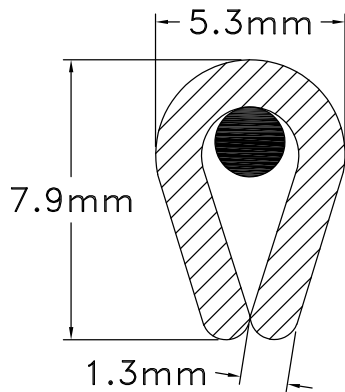
Tolerance: RMA-E2

Material: PVC

Color: Black

Durometer: 80  $\pm$ 5

# EDGE TRIM



## EDGE TRIM

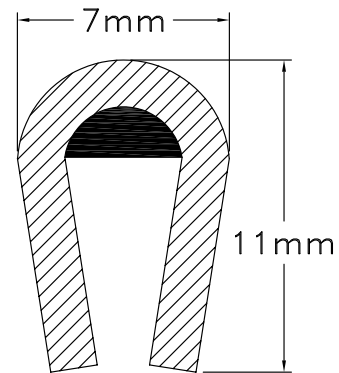
PART #: ES28-215-P80

Tolerance: RMA-E2

Material: PVC

Color: Chrome

Durometer: 80 ±5



## EDGE TRIM

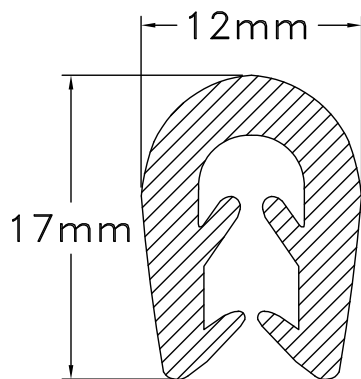
PART #: ES28-280-P80

Tolerance: RMA-E2

Material: PVC

Color: Black

Durometer: 80 ±5



## EDGE TRIM

PART #: ES28-403-P

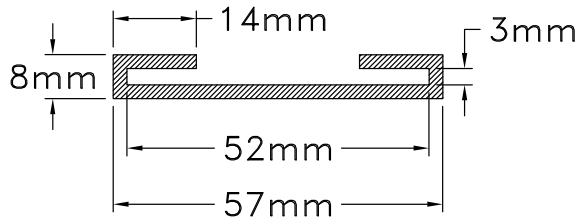
Tolerance: RMA-E2

Material: Plastic

Color: Black

Durometer: N/A

# SOLID PROFILES



## SOLID PROFILES

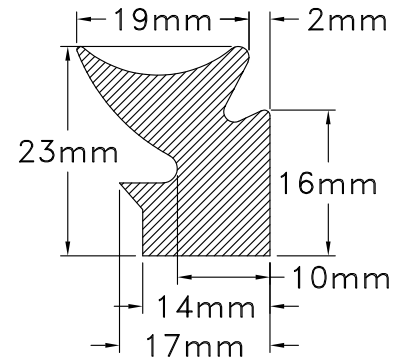
PART #: ES08-525-N70

Tolerance: RMA-E2

Material: Neoprene

Color: Black

Durometer: 70  $\pm$ 5



## SOLID PROFILES

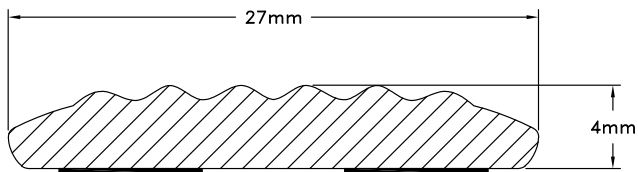
PART #: ES11-004-S60

Tolerance: RMA-E2

Material: Silicone

Color: Red

Durometer: 60  $\pm$ 5



## SOLID PROFILES

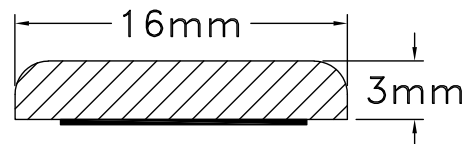
PART #: ES12-188-P80T1

Tolerance: RMA-E2

Material: PVC

Color: Black Glossy

Durometer: 80  $\pm$ 5



## SOLID PROFILES

PART #: ES12-189-P80T1

Tolerance: RMA-E2

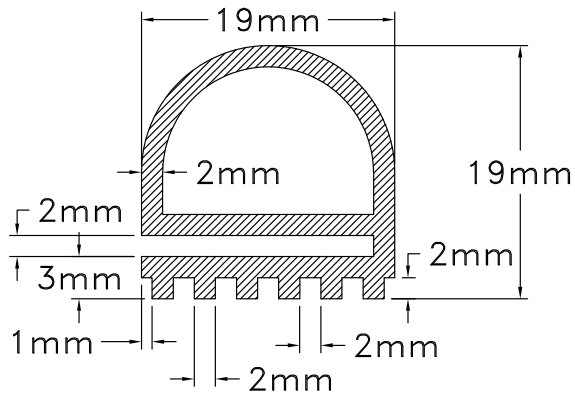
Material: PVC

Color: Black Matte

Durometer: 80  $\pm$ 5



# SOLID PROFILES



## SOLID PROFILES

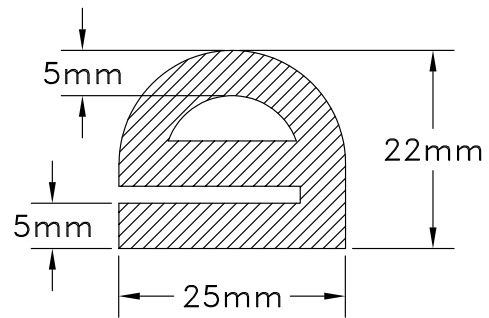
PART #: ES14-001-S60B

Tolerance: RMA-E2

Material: Silicone

Color: Black

Durometer: 60 ±5



## SOLID PROFILES

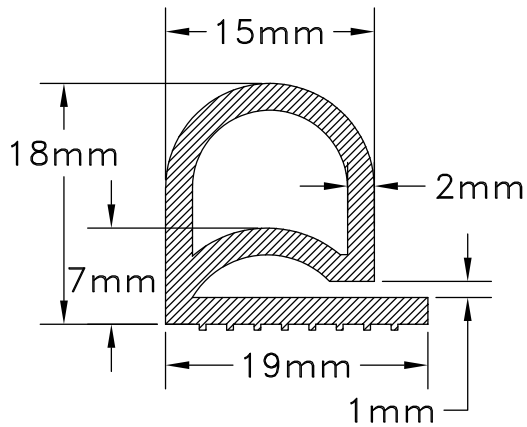
PART #: ES14-125-C70

Tolerance: RMA-E2

Material: SBR

Color: Black

Durometer: 70 ±5



## SOLID PROFILES

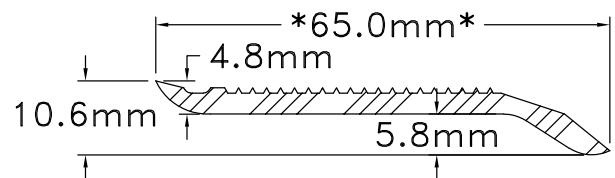
PART #: ES14-475-S60

Tolerance: RMA-E2

Material: Silicone

Color: Light Grey

Durometer: 60 ±5



## SOLID PROFILES

PART #: ES18-067-P90

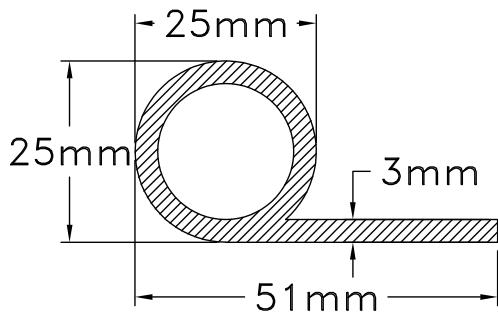
Tolerance: RMA-E2

Material: Vinyl

Color: Pantone 432 U

Durometer: 90 ±5

# SOLID PROFILES



## SOLID PROFILES

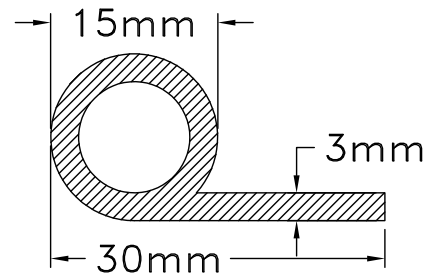
PART #: ES20-006-E60

Tolerance: RMA-E2

Material: EPDM

Color: Black

Durometer: 60  $\pm$ 5



## SOLID PROFILES

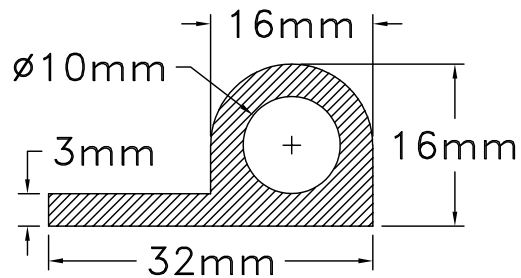
PART #: ES20-055-E70

Tolerance: RMA-E2

Material: EPDM

Color: Black

Durometer: 70  $\pm$ 5



## SOLID PROFILES

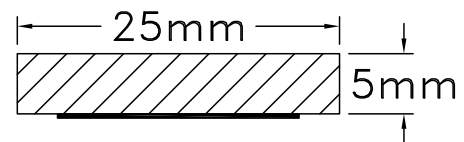
PART #: ES20-092-E70

Tolerance: RMA-E3

Material: EPDM

Color: BLACK

Durometer: 70 +5/-0



## SOLID PROFILES

PART #: ES26-187-21-E60T1

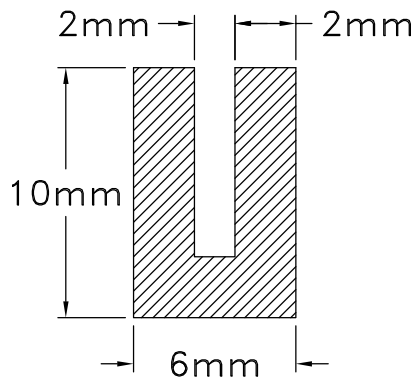
Tolerance: RMA-E2

Material: EPDM

Color: Black

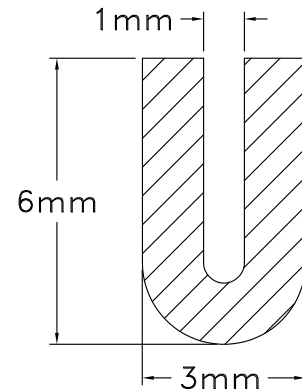
Durometer: 60  $\pm$ 5

# SOLID PROFILES



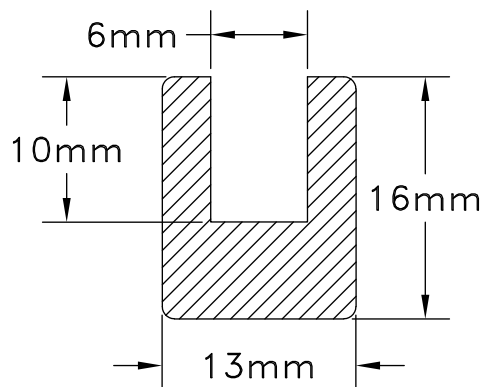
**SOLID PROFILES**  
**PART #: ES32-007 -E70**

Tolerance: RMA-E2  
Material: EPDM  
Color: Black  
Durometer: 70  $\pm$ 5



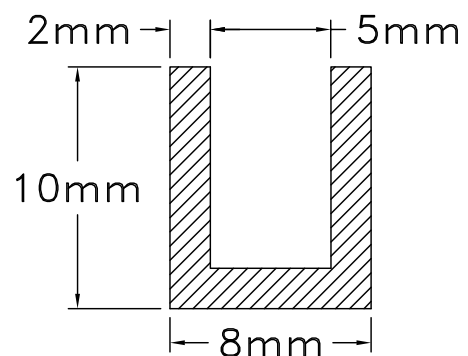
**SOLID PROFILES**  
**PART #: ES32-062-E70**

Tolerance: RMA-E2  
Material: EPDM  
Color: Black  
Durometer: 70  $\pm$ 5



**SOLID PROFILES**  
**PART #: ES32-117-E70**

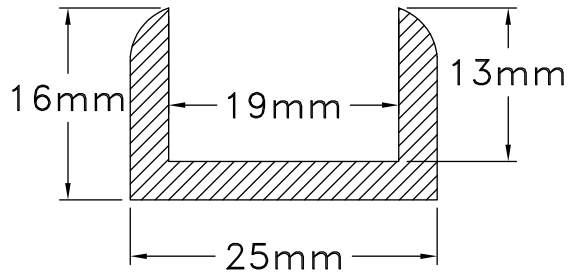
Tolerance: RMA-E3  
Material: EPDM  
Color: Black  
Durometer: 70  $\pm$ 5



**SOLID PROFILES**  
**PART #: ES32-123-N70**

Tolerance: RMA-E3  
Material: Neoprene  
Color: Black  
Durometer: 70  $\pm$ 5

# SOLID PROFILES



## SOLID PROFILES

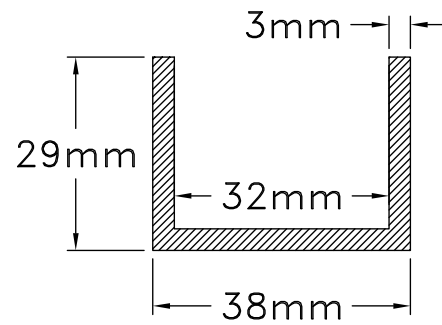
PART #: ES32-175-E70

Tolerance: RMA-E2

Material: EPDM

Color: Black

Durometer: 70  $\pm$ 5



## SOLID PROFILES

PART #: ES32-185-E60

Tolerance: RMA-E2

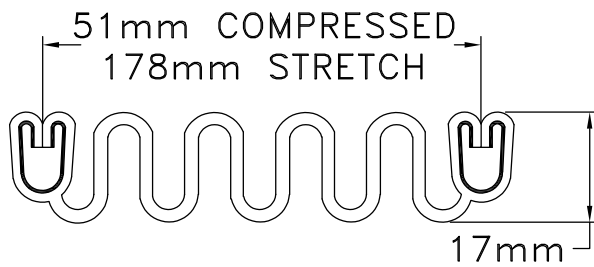
Material: EPDM

Color: Black

Durometer: 60  $\pm$ 5



# SPONGE PROFILES



## SPONGE PROFILES PART #: EC02-014-EM

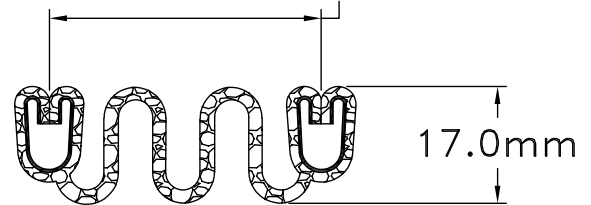
Tolerance: RMA-BEC2

Material: EPDM Sponge

Color: Black

Density: Medium

50.8mm COMPRESSED  
114.3mm STRETCHED



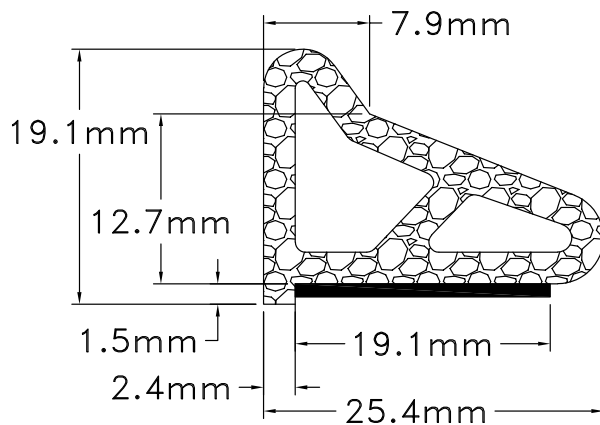
## SPONGE PROFILES PART #: EC02-025-EM

Tolerance: RMA-BEC2

Material: EPDM Sponge

Color: Black

Density: Medium



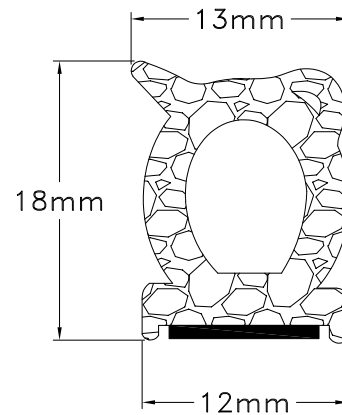
## SPONGE PROFILES PART #: EC04-006-EMT1

Tolerance: As Shown

Material: EPDM Sponge/PSA

Color: Black

Density: Medium



## SPONGE PROFILES PART #: EC04-130-EMT1

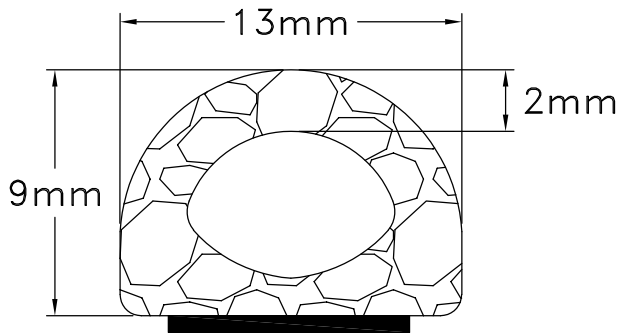
Tolerance: RMA-BEC2

Material: EPDM Sponge

Color: Black

Density: Medium

# SPONGE PROFILES



## SPONGE PROFILES

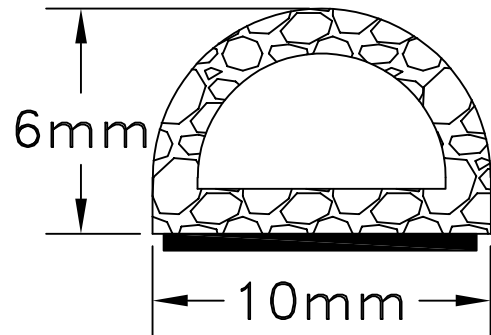
PART #: EC12-005-EMT\*

Tolerance: TBA

Material: EPDM Sponge

Color: Black

Density: Medium



## SPONGE PROFILES

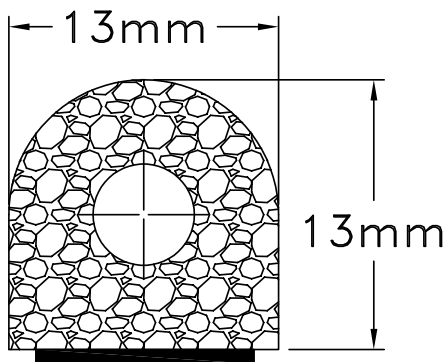
PART #: EC12-006-EMT1

Tolerance: RMA-BEC2

Material: EPDM Sponge

Color: Black

Density: Medium



## SPONGE PROFILES

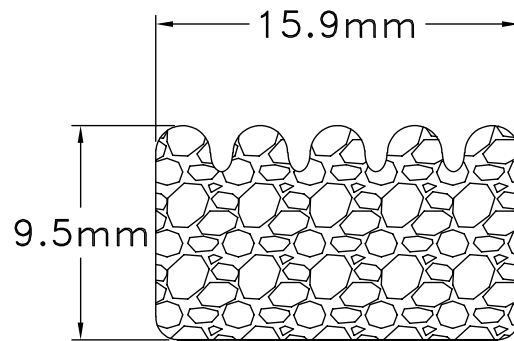
PART #: EC12-009-EMT

Tolerance: TBA

Material: EPDM Sponge

Color: Black

Density: Medium



## SPONGE PROFILES

PART #: EC12-010-MMT

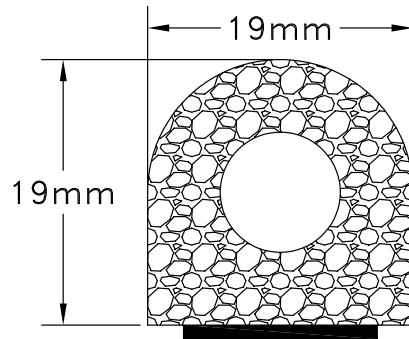
Tolerance: RMA-BEC2

Material: Blend Sponge

Color: Black

Density: Medium

# SPONGE PROFILES



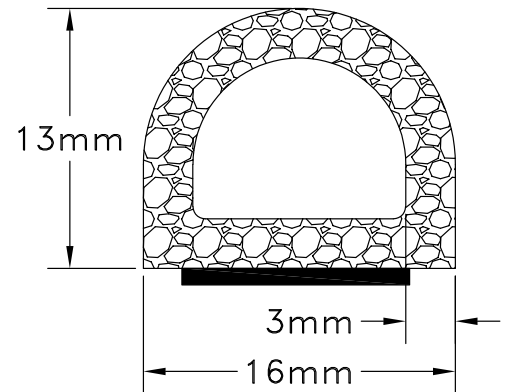
## SPONGE PROFILES PART #: EC12-012-EMT

Tolerance: As Shown

Material: EPDM Sponge

Color: Black

Density: Medium



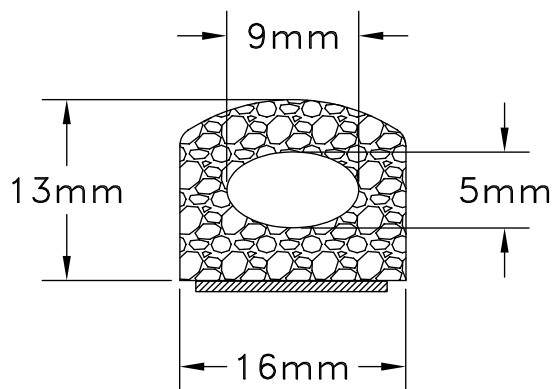
## SPONGE PROFILES PART #: EC12-013-NMT

Tolerance: As Shown

Material: Neoprene Sponge

Color: Black

Density: Medium



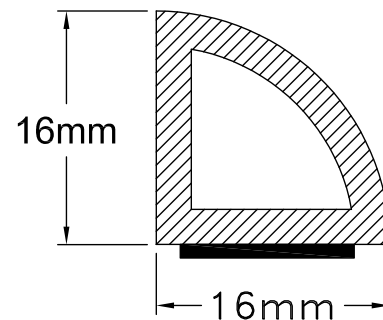
## SPONGE PROFILES PART #: EC12-015-EMT1

Tolerance: RMA-BEC2

Material: EPDM Sponge

Color: Black

Density: Medium



## SPONGE PROFILES PART #: EC12-016-EMT1

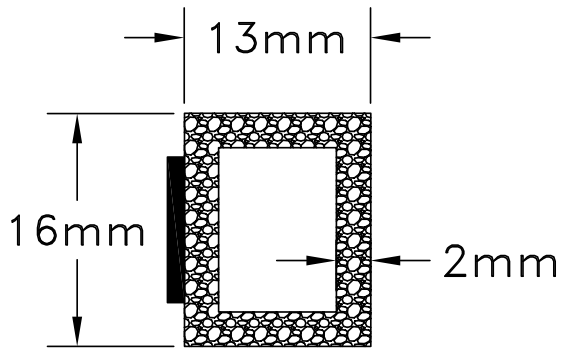
Tolerance: TBA

Material: EPDM Sponge

Color: Black

Density: Medium

# SPONGE PROFILES



## SPONGE PROFILES

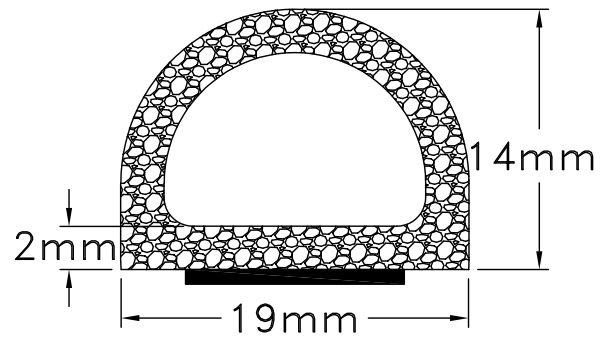
PART #: EC12-017-EMT1

Tolerance: RMA-BER2

Material: EPDM Sponge W/ADH

Color: Black

Density: Medium



## SPONGE PROFILES

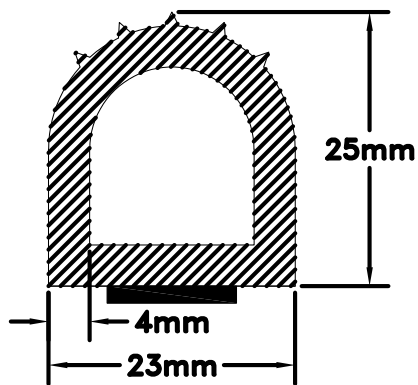
PART #: EC12-020-EMT1

Tolerance: TBA

Material: EPDM Sponge

Color: Black

Density: Medium



## SPONGE PROFILES

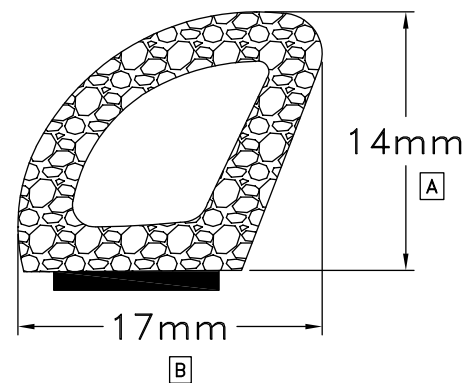
PART #: EC12-045-EHT1

Tolerance: RMA-BEC2

Material: EPDM Sponge

Color: Black

Density: Hard



## SPONGE PROFILES

PART #: EC12-046-EMT1

Tolerance: RMA-BEC2

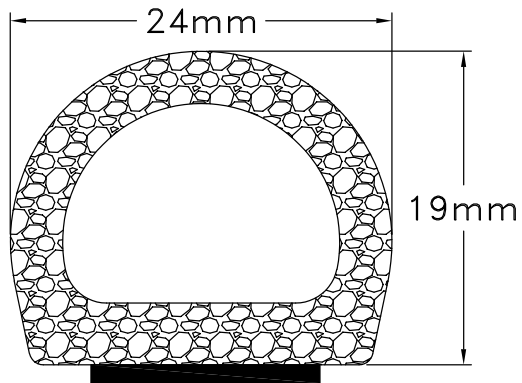
Material: EPDM Sponge

Color: Black

Density: Medium



# SPONGE PROFILES



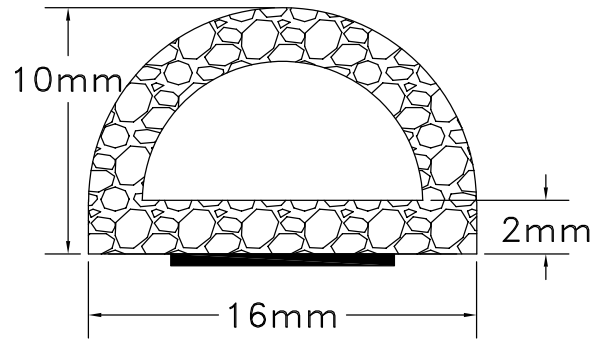
## SPONGE PROFILES PART #: EC12-049-MMT1

Tolerance: RMA-BER2

Material: Blend Sponge

Color: Black

Density: Medium



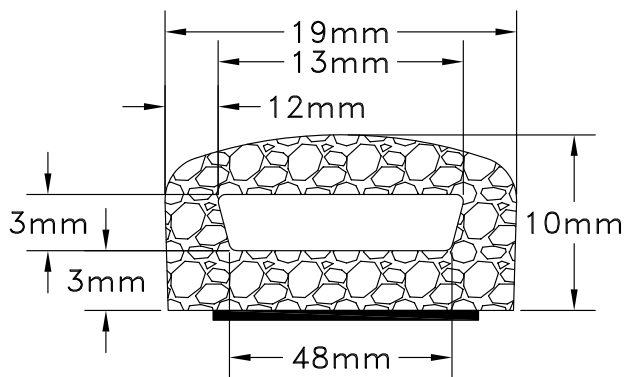
## SPONGE PROFILES PART #: EC12-050-EMT1

Tolerance: As Shown

Material: EPDM Sponge

Color: Black

Density: Medium



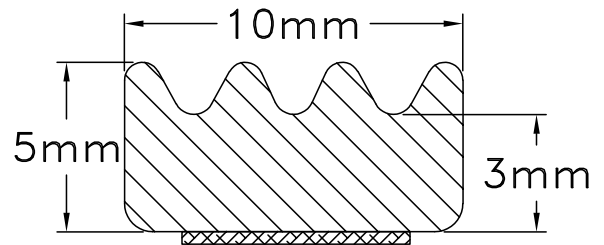
## SPONGE PROFILES PART #: EC12-055-EMT1

Tolerance: RMA-BEC2

Material: EPDM Sponge

Color: Black

Density: Medium



## SPONGE PROFILES PART #: EC12-065-EMT1

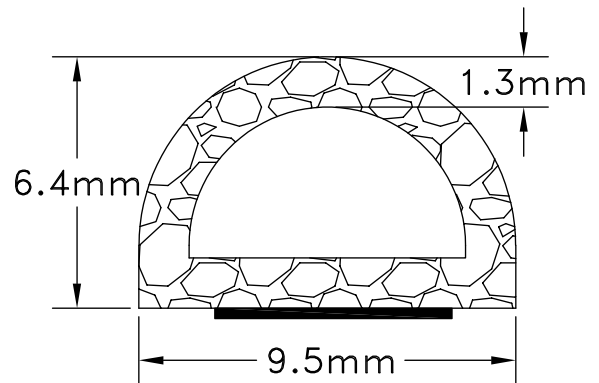
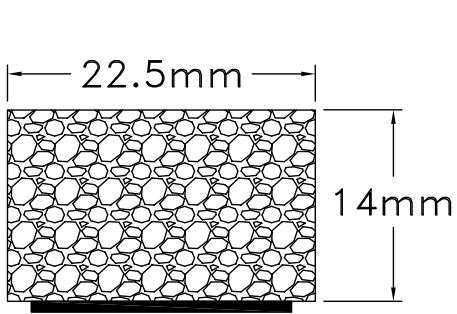
Tolerance: RMA-BEC2

Material: EPDM Sponge

Color: Black

Density: Medium

# SPONGE PROFILES



## SPONGE PROFILES PART #: EC26-031-EST

Tolerance: RMA-BEC2

Material: EPDM

Color: Black

Density: Soft

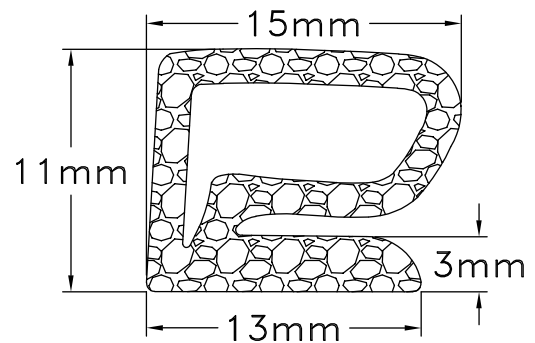
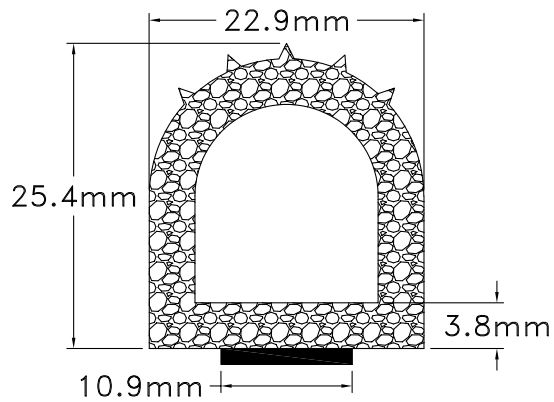
## SPONGE PROFILES PART #: EC12-506-EMT1

Tolerance: RMA-BEC2

Material: EPDM Sponge

Color: Black

Density: Medium



## SPONGE PROFILES PART #: EC12-545-EMT1

Tolerance: RMA-BEC2

Material: EPDM Sponge

Color: Black

Density: Medium

## SPONGE PROFILES PART #: EC14-014-EM

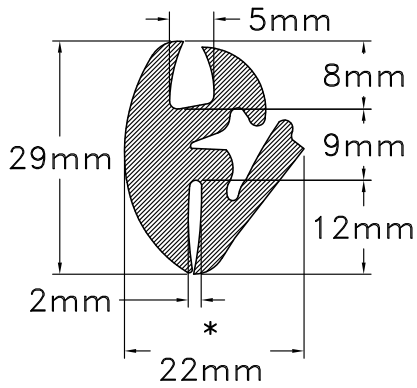
Tolerance: RMA-BEC2

Material: EPDM/NEO/CPE Blend

Color: Black

Density: Medium Sponge

# WINDOW CHANNEL



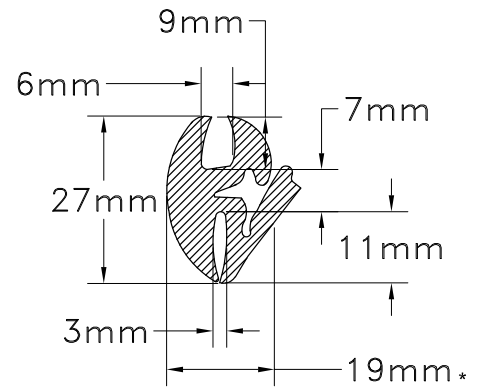
## WINDOW CHANNEL PART #: ES35-019-E60

Tolerance: RMA-E2

Material: EPDM

Color: Black

Durometer: 60  $\pm$ 5



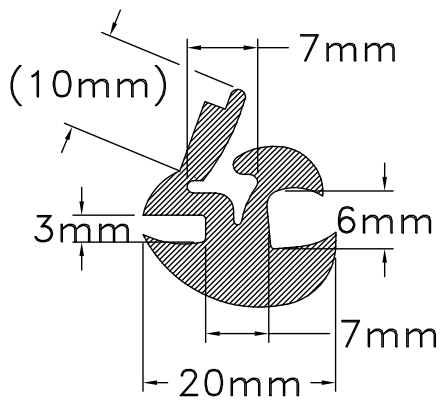
## WINDOW CHANNEL PART #: ES35-020-E70

Tolerance: As Shown

Material: EPDM

Color: Black

Durometer: 70  $\pm$ 5



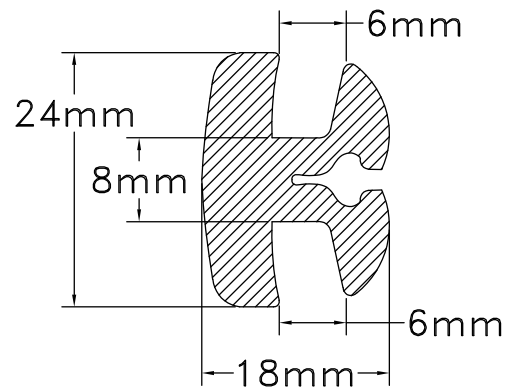
## WINDOW CHANNEL PART #: ES35-022-E65

Tolerance: RMA-E3

Material: EPDM

Color: Black

Durometer: 65  $\pm$ 5



## WINDOW CHANNEL PART #: ES36-014-E70

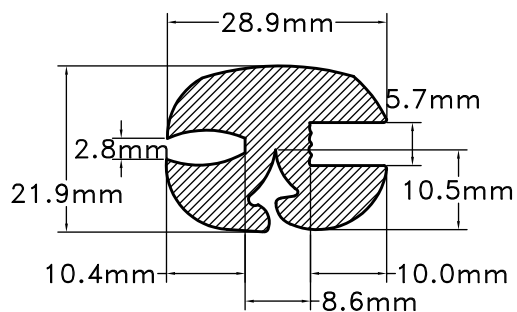
Tolerance: RMA-E2

Material: EPDM

Color: Black

Durometer: 70  $\pm$ 5

# WINDOW CHANNEL



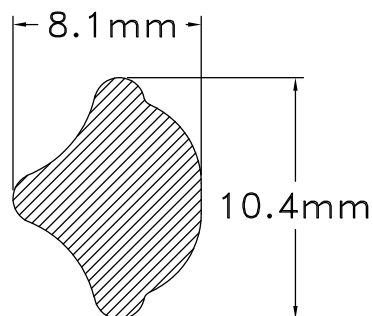
## WINDOW CHANNEL PART #: ES36-034-E70

Tolerance: RMA-E2

Material: EPDM

Color: Black

Durometer: 70  $\pm$ 5



## WINDOW CHANNEL PART #: ES38-002-E80

Tolerance: RMA-E2

Material: EPDM

Color: Black

Durometer: 80  $\pm$ 5

# GET IN TOUCH

## CANADA

4035 Lavoisier Rue  
Boisbriand, Québec,  
Canada  
J7H 1N1

Phone: (450) 434-2744  
Fax: (450) 434-5998

## CANADA

1145 Nicholson RD Unit 3  
Newmarket, Ontario,  
Canada  
L3Y 9C3

Phone: (905) 898-1139  
Fax: (905) 898-1004

## USA

1021-C Old Stage Road  
Simpsonville, South  
Carolina, USA  
29681-6044

Phone: (864) 228-5900  
Fax: (864) 963-8992

## BELGIUM

Heimolenstraat 127A  
Box 5, 9100 Sint-Niklaas  
  
Phone: +32 (0) 3 301 01 83