



pathway

---

## Direct Service

Welcome to the UServeUtah Community Engagement Pathways for Direct Service! This toolkit is designed to provide you with an understanding of the Direct Service Pathway and equip you with the knowledge and know-how to begin your path of deeper engagement and service.

Not sure what your top pathways are? [Take our quiz here.](#)

# Introduction to the pathways



## Direct Service

The UServeUtah's Community Engagement Pathways are patterned after a framework developed by Stanford University that educates and inspires individuals to contribute to the common good through distinct types of volunteerism.

Each of the six Community Engagement Pathways are unique, but they also overlap and intersect, finding different angles or directions from which to address a complex issue.

---

**Your survey results show that Direct Service is your top pathway!**

Direct Service is defined as:

**“Working to address the immediate needs of individuals or a community, often involving contact with the people or places being served.”**



## Social Entrepreneurship & Corporate Social Responsibility



## Community Engaged Learning & Research



## Policy & Governance



## Philanthropy



## Community Organizing & Activism

# Common Attributes

Direct service is one of the most well-known pathways and might be what comes to mind first when you think of community engagement. If you are interested in direct service, you likely want to engage directly with the communities or places you want to serve. This engagement can look different for everyone, but typically it involves giving personal time, energy, or resources to address the immediate needs of the issues about which you are passionate.

On page 05 of the toolkit, we highlight different examples of what engaging with the Direct Service Pathway might look like for different interest areas. While this list is not exhaustive, it is a great starting point to begin your path!



**Those inclined to this pathway tend to have these common attributes:**

- 01** Find satisfaction in interacting directly with the communities or places they are looking to serve
- 02** Find satisfaction in seeing the immediate impact of their service
- 03** Prefer connecting directly with like-minded organizations and people
- 04** Ability/desire to communicate with others from different backgrounds and abilities
- 05** Have some knowledge of the needs/issue areas you are seeking to address
- 06** Have a team-player mentality
- 07** Have a desire to learn
- 08** Have the ability to identify what skills would be most helpful to the organization/issue with which you are engaging

**Does this sound like you? Great!**

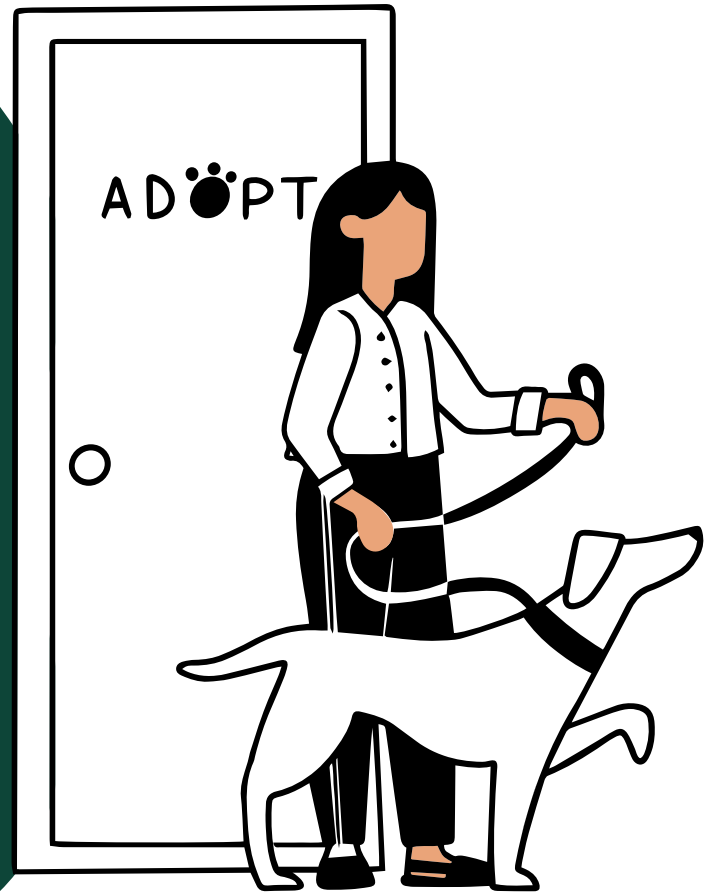
In the next section, this toolkit will show you how you can begin to make a difference.

# The Pathway of the Pathway

It doesn't matter if it's your first time engaging with service or you have spent a lifetime dedicated to serving the communities and places around you, everyone has the ability to contribute to bettering their community through the Pathways of Community Engagement. Each pathway presents an opportunity for growth and development as you deepen your engagement and understanding.

As you review the information below, take a moment to reflect on your experience to date and consider your starting point.

If it is your first time engaging with direct service, a great place to start is finding local volunteer opportunities in your area that align with your interest areas and passions.



## 01 → 02 → 03

In this toolkit, you will find examples that align with the 13 social and community concerns listed in the survey. **Here are some examples of ways to get started:**

- Volunteer with a local nonprofit, club, or service organization
- Get together with family or friends to do a day of service
- Volunteer with a community service project

**If you have engaged with direct service in the past** and are looking to deepen that engagement, there are many ways to do so. Some examples include:

- Joining a club or organization whose mission is direct service
- Volunteering to share your skills and train people in something you do well
- Working with a local government or community organizer to organize community volunteer events or service projects

**If you have years of experience with direct service** and are looking to engage in a more formal way, here are a few examples of how you can do that:

- Sit on the board of a local nonprofit organization
- Start or lead a club or organization whose mission is direct service
- Participate in a service year program (e.g., AmeriCorps, City Year, etc.)

Note: this list is not exhaustive and can be done in any order that feels comfortable.

# Interest Areas

In the survey, you were asked which social and community concerns you care about and want to get more involved with. Below is a matrix that illustrates different forms of direct service for each of the 13 social and community concerns listed in the survey. While this list is not exhaustive, it is a great starting place to consider how you might like to engage with your community! They are only offered as examples to jump-start your creativity.



**Working to address the immediate needs of individuals or a community, often involving contact with the people or places being served”**



## **Animals**

Volunteering with an animal rescue organization



## **Health & Wellness**

Volunteering at a local hospital



## **Children & Youth Development**

Coaching a local youth sports team



## **Human Services**

Acting as a mentor or guide for refugee families



## **Civil Rights**

Registering individuals in marginalized communities to vote



## **Homelessness & Poverty**

Serving meals at a local soup kitchen or homeless shelter



## **Community Development**

Teaching a financial management class for future homeowners



## **Public Services**

Volunteering at a local library, park, or other municipal venue



## **Diversity, Equity & Inclusion**

Working with youth at an LGBTQIA resource center



## **Senior Citizens**

Spending time at a local senior center



## **Education & Teaching**

Volunteering in your child's classroom



## **Wildlife Protection**

Participating in a local wildlife annual count



## **Environment**

Planting trees or participating in a trail cleanup

# Complementing Pathways



While your interests may lie in any pathway, all are interdependent and each is necessary for impact on complex issues. Working together the Community Engagement Pathways can create a significant difference within the community.

## Social Entrepreneurship & Corporate Social Responsibility

Organize a fundraising drive at your place of work to support disaster relief.

### Direct Service

Help clean up your neighborhood after an earthquake.

## Community Organizing & Activism

Organize a neighborhood clean-up after a natural disaster.

## Philanthropy

Support a fundraiser for the Red Cross after a natural disaster.

## Policy & Governance

Work with community leaders to encourage policies that address natural disaster relief programs.

## Community Engaged Learning & Research

Take a class to understand how natural disasters impact local communities and the best methods for response.

To learn more about the other 5 pathways, [click here](#).

# community engagement pathways

**You are ready to engage with  
your community!**

**Click here** to discover volunteer  
opportunities in your area.

find us online at **userve.utah.gov**  
follow us on social media **@UServeUtah**