



Dear Parent,

We are about to begin our first spelling unit containing five weekly lessons. A set of eighteen words will be studied each week. All the words will be reviewed in the sixth week. Values based on the Scriptures listed below will be taught in each lesson.

### Lesson 1

brand  
branch  
past  
reptile  
pebble  
self  
swept  
fist  
ridge  
sink  
dock  
flock  
shove  
dust  
touch  
hung  
blood  
trust

Mark 12:30, 31

### Lesson 2

John 15:26

### Lesson 3

John 1:4, 5

### Lesson 4

John 8:12

### Lesson 5

John 14:6

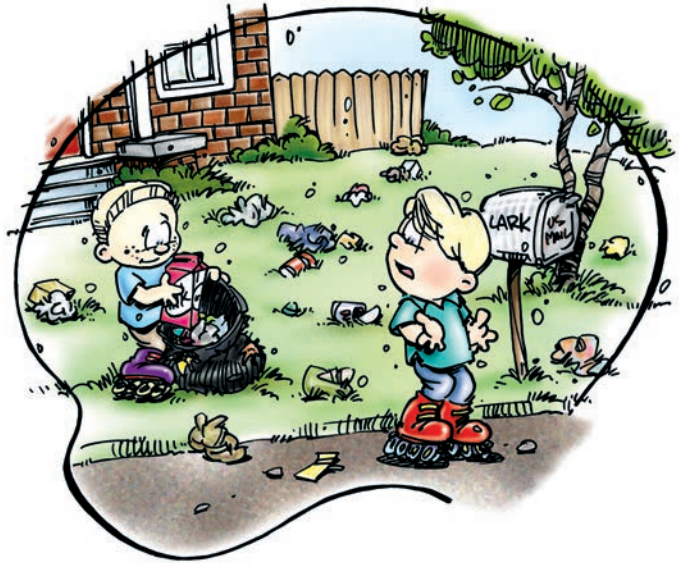
**Remaining Word Lists from this Section  
Available in Purchased Copy.**

# A Preview

Write each word as your teacher says it.

Name \_\_\_\_\_

1. \_\_\_\_\_
2. \_\_\_\_\_
3. \_\_\_\_\_
4. \_\_\_\_\_
5. \_\_\_\_\_
6. \_\_\_\_\_
7. \_\_\_\_\_
8. \_\_\_\_\_
9. \_\_\_\_\_
10. \_\_\_\_\_
11. \_\_\_\_\_
12. \_\_\_\_\_
13. \_\_\_\_\_



14. \_\_\_\_\_
15. \_\_\_\_\_
16. \_\_\_\_\_
17. \_\_\_\_\_
18. \_\_\_\_\_

## Scripture

Mark 12:30, 31

**B** Word Shapes

Name \_\_\_\_\_

Write each word in the correct word shape boxes. Next, in the word shape boxes, **shade in** the boxes containing the letter or letters that spell the short vowel sound in each word.

1. brand
2. branch
3. past
4. reptile
5. pebble
6. self
7. swept
8. fist
9. ridge
10. sink
11. dock
12. flock
13. shove
14. dust
15. touch
16. hung
17. blood
18. trust










**C Hide and Seek**

Name \_\_\_\_\_

Play Hide and Seek with your words. Create a bar graph by filling in a box (left to right) for each word you spell correctly.



**D Other Word Forms**

Using the words below, follow the instructions given by your teacher.

- |           |           |            |            |             |
|-----------|-----------|------------|------------|-------------|
| bloodline | dusty     | sinking    | touched    | trustful    |
| branches  | dusts     | sank       | touches    | trusty      |
| branched  | hang      | sunk       | touchier   | trustworthy |
| branded   | fistful   | unsinkable | touchiest  | entrust     |
| branding  | fists     | shoving    | touchiness |             |
| docked    | pebbles   | sweep      | touch-up   |             |
| docking   | pebbly    | sweeps     | trusted    |             |
| flocking  | ridges    | sweeping   | trusting   |             |
| flocked   | ourselves | touchable  | trusts     |             |

**E Fun Ways to Spell**

Initial the box of each activity you finish.

1. 

Create a crossword puzzle.

3. 

Spell your words on tape.

2. 

Spell your words with paint.

4. 

Bounce a ball as you spell your words.

**F Working with Words**

Name \_\_\_\_\_

**Alphabetical Order**

Dictionary words are listed in **alphabetical order**. Words beginning with **a** come first, then words beginning with **b**, and so on. It is simple to find a word in the dictionary if you know about **alphabetical order**. Remember, when words begin with the same letter, look at the second letter. If the first two letters are the same, look at the third letter.

**Write** the words in each group in alphabetical order.

1. brand fist branch flock

\_\_\_\_\_

2. dust blood past dock

\_\_\_\_\_

3. swept trust self touch sink

\_\_\_\_\_



**Lesson**

**1**

**Dictionary Skills**

Some dictionary entries have more than one meaning or definition. **Read** the definitions.

**Write** the word that matches both meanings.

1. A part of a tree.

A road that splits from a larger road. \_\_\_\_\_

2. Placed on a hook.

Unable to make a decision. \_\_\_\_\_

3. A particular make of a product.

Burn a mark on an animal's skin. \_\_\_\_\_



**Word Bank**

- |        |         |       |       |       |       |
|--------|---------|-------|-------|-------|-------|
| brand  | reptile | swept | sink  | past  | hung  |
| branch | pebble  | fist  | dock  | dust  | blood |
| past   | self    | ridge | flock | touch | trust |

## G Dictation

Name \_\_\_\_\_

Write each sentence as your teacher dictates. Use correct punctuation.

1. Thorny \_\_\_\_\_  
\_\_\_\_\_

2. \_\_\_\_\_  
\_\_\_\_\_

3. Thorny \_\_\_\_\_  
\_\_\_\_\_

## H Proofreading

If a word is misspelled, fill in the oval by that word. If all the words are spelled correctly, fill in the oval by **no mistake**.



1.  brand  
 bump  
 past  
 no mistake

5.  test  
 flock  
 plant  
 no mistake

9.  ridge  
 grab  
 pebbel  
 no mistake

2.  reptiel  
 life  
 happen  
 no mistake

6.  wagon  
 dunn  
 dust  
 no mistake

10.  sink  
 deep  
 mean  
 no mistake

3.  berry  
 dok  
 swept  
 no mistake

7.  hung  
 blud  
 puppy  
 no mistake

11.  rake  
 self  
 tutch  
 no mistake

4.  cookie  
 branch  
 brook  
 no mistake

8.  sorry  
 table  
 trust  
 no mistake

12.  fist  
 poor  
 loud  
 no mistake

**I Game**

Name \_\_\_\_\_

Help Tommy and Thorny pick up trash by **moving** one space for each word you or your team spells correctly from this week's word list.



**Remember:** Loving God means caring as much for others as you care about yourself!

**J Journaling**

In your journal, **write** about a time you showed your love for others by your actions, or a time when someone else showed their love for others by helping you.

