

DURAPAC
ENGINEERED FOR RELIABILITY



SDL Series Lifting Jacks for Dozers, Dump Trucks & Heavy Mobile Equipment



specialisedforce.com.au

DURAPAC AND SPECIALISED FORCE

DURAPAC

INTRODUCTION

Specialised Force is proud to be the exclusive distributor of DURAPAC in Australia. We offer a comprehensive range of high-quality, **Australian-designed and built** air hydraulic jacks. These products are available in stock and distributed through our nine branches across Australia. We also support a national network of seven repair shops that provide reliable after-sales service and spare parts.



INDEX	PAGE No.
SDL AIR HYDRAULIC DUMP TRUCK JACKS OVERVIEW	3
SDL AIR HYDRAULIC DOZER JACKS OVERVIEW	3
GAST AIR MOTOR	4
SAFE-D-LOCK	5
POWER DRIVE	6
REMOTE PENDANT	7
LATEST ADD-ONS	8-9
DJS SERIES JACK STAND	10-11
SDL SERIES EXTRA COMPACT SAFE-D-LOCK JACK	12-13
SDL SERIES SAFE-D-LOCK JACK + POWERDRIVE	14-15
SDN SERIES JACK + POWERDRIVE	16-17
SDL SERIES SLIMLINE SAFE-D-LOCK JACK	18-19
SDL SERIES TALL SAFE-D-LOCK JACK + POWERDRIVE	20-21
SD SERIES ACCESSORIES	22-23
SERVICE & SOLUTIONS	24
SDL JACKS EXAMPLE APPLICATIONS	25
CUSTOMER SITE – SDL JACK LIFECYCLE MANAGEMENT	26-27
POPULAR CATALOGUES	28

DURAPAC SDL JACK FOR DOZERS & DUMP TRUCKS

DURAPAC

DURAPAC SDL air hydraulic **dump truck jacks** offer lifting capacities from 77 to 200 US tons, with stroke ranges from 400 to 685 mm. They are ideal for servicing "ultra" class (above 290-tonne) mining dump trucks, including—but not limited to—the Caterpillar 797 Series and Komatsu 930E Series.



DURAPAC SDL air hydraulic **dozer jacks** feature a 100 US ton lifting capacity, low clearance, and reduced width to enable quick and easy positioning under dozer lift points. They are ideal for lifting dozers such as the Caterpillar D9, D10, and D11.



SDL SERIES JACKS & DJS SERIES JACK STANDS

specialisedforce.com.au

WORLD-RENOUNDED GAST AIR MOTOR

DURAPAC

OVERVIEW

DURAPAC SDL air hydraulic jacks use compressed air as the source of power (requiring an external air compressor). At the heart of the jack is a robust, world-renowned **Gast® 3.9 kW air motor**, known for its quality and durability. This motor powers the 10,000 psi (700 bar) hydraulic system that controls a hydraulic cylinder featuring a hard chromed piston rod, a bronze overlay on the piston bearing area, and retractable side safety pressure relief valves, ensuring long-term, trouble-free performance. Using an air motor has several benefits over an electric motor or a combustion engine, such as significantly reduced size, weight, and complexity. They can also be stalled or overloaded for long periods without damaging the motor. In addition to being a non-electrical device and cool running, Gast air motors are ideal for use in hazardous and extreme ambient temperatures and potentially explosive environments—places where you couldn't even consider using electricity. This makes them ideal for mining applications.

LOCK INDICATORS

confirm 'locked' and 'unlocked' status

OIL RETURN LINE FILTER

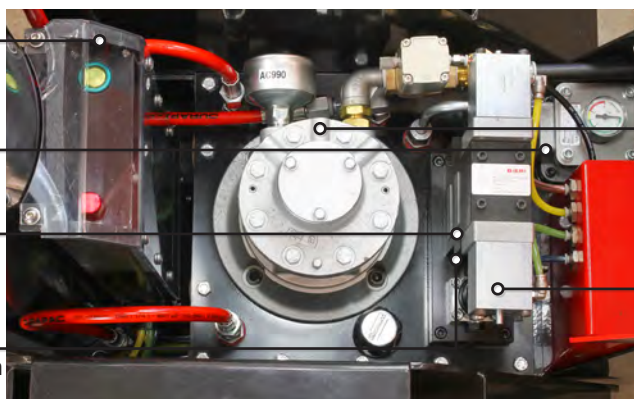
included as standard

LOCKING VALVES

dual hydraulic locking valves for added safety

LOAD LOWERING

counter balance valve for smooth controlled lowering of load



HYDRAULIC SYSTEM

is powered by a Gast® 3.9 kW air motor

PNEUMATIC CONTROL VALVES

for precise lifting and lowering

PORTABILITY IN MIND

DURAPAC SDL air hydraulic jacks are constructed with portability in mind. They feature lifting points as well as a tilt adjustable handle that makes them extremely easy to transport on a small trailer or regular ute.

LIFTING POINTS

Built-in lifting points for loading and unloading with a forklift

FOLDABLE HANDLE

Foldable handle makes transportation easy, even on a one-tonne ute.



SAFE-D-LOCK[®]

Just one "ultra" class mining dump truck tyre weighs around 4.2 tonnes and stands over 3.5 meters high, making them some of the largest truck tires in the world. These tires are not only removed due to tread wear or punctures for repair but are also routinely rotated between the front and rear wheels of haul trucks to extend their life. Use of an incorrect lifting equipment can create a safety hazard for the operators.

DURAPAC SDL air hydraulic jack is **designed with the operators' safety paramount**. They feature patented "Safe-D-Lock" oil-bathed internal locking quadrants, which remain energized throughout the lifting process for fail-safe operation. This eliminates the need for safety stands or for operators to crawl under the load. By simply pressing "Lift" and then "Lock" on the 5-metre pendant control, the Safe-D-Lock converts into an approved safety support stand. Additionally, the locking mechanism automatically engages in the rare event of a hydraulic failure, providing an additional layer of safety. SDL jacks meet or exceed the AS/NZS 2693:2007 standard for vehicle jacks and the AS/NZS 2538:2004 standard for vehicle support stands.

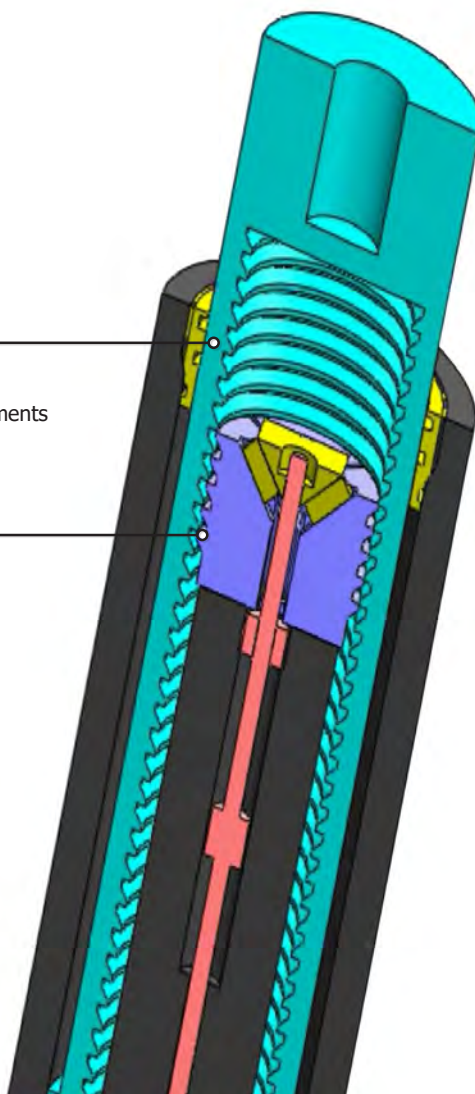
- **TAKING LIFTING TECHNOLOGY TO THE NEXT LEVEL**
- **BOOSTING PRODUCTIVITY BY TONNES**
- **RAISING SAFETY STANDARDS ACROSS EVERY LIFT**

PATENTED FAIL SAFE

spring loaded mechanical locking system. Oil-bathed and totally enclosed to prevent contamination. Can be locked in 13mm increments

MECHANICAL QUADRANT LOCKS

designed and tested to hold a minimum 3 x rated jack capacity without failure



POWERDRIVE

The optional "Powerdrive" enhancement transforms the SDL Safe-D-Lock jack into a **self-propelled lifting jack** and rated vehicle jacking stand suitable for heavy mining vehicles. The Safe-D-Lock jack + POWERDRIVE utilizes dual independent DC motors driving the wheels via a durable chain and sprocket design. Notable features include soft start, forward and reverse handle-mounted switches, dead-man triggers, and two M18 Red Lithium™ 5 Ah rechargeable batteries per unit, with one 230 VAC charger included. Each handle boasts dual independent drives—forward and reverse—alongside independent dead-man switches, ensuring effortless manoeuvrability and safety. The three-position toggle switches (Forward, Neutral, Reverse) are IP65 rated for operation in all weather conditions.



The Safe-D-Lock jack + POWERDRIVE utilises dual independent DC motors driving the wheels via a robust chain and sprocket design. Features include soft start, forward and reverse handle mounted switches, dead-man triggers and two M18 Red Lithium™ 5 Ah rechargeable batteries.

1

Did you know...

The Safe-D-Lock jack + POWERDRIVE can self-propel up workshop slopes of 5 degrees

1

DUAL BATTERIES

industry standard batteries

RANGE OF 2KM

per 5.0 Ah 18.0 VDC
lithium-Ion battery

CHARGE INDICATOR

shows charge remaining in each battery

BATTERY SELECTOR

drive system operates off one battery at a time

OVERLOAD PROTECTION

with resettable standard 20 Amp auto fuse

SAFER & EASIER MANOUEVERABILITY

no need to connect to air supply to move jack



THREE POSITION TOGGLE

F (Forward) N (Neutral) R (Reverse)

IP 65 SWITCHES

for all weather environments

DUAL INDEPENDENT DRIVES

forward & reverse independent
drive each handle



INDEPENDANT DEADMAN SWITCHES

for easy manoeuvring and safety

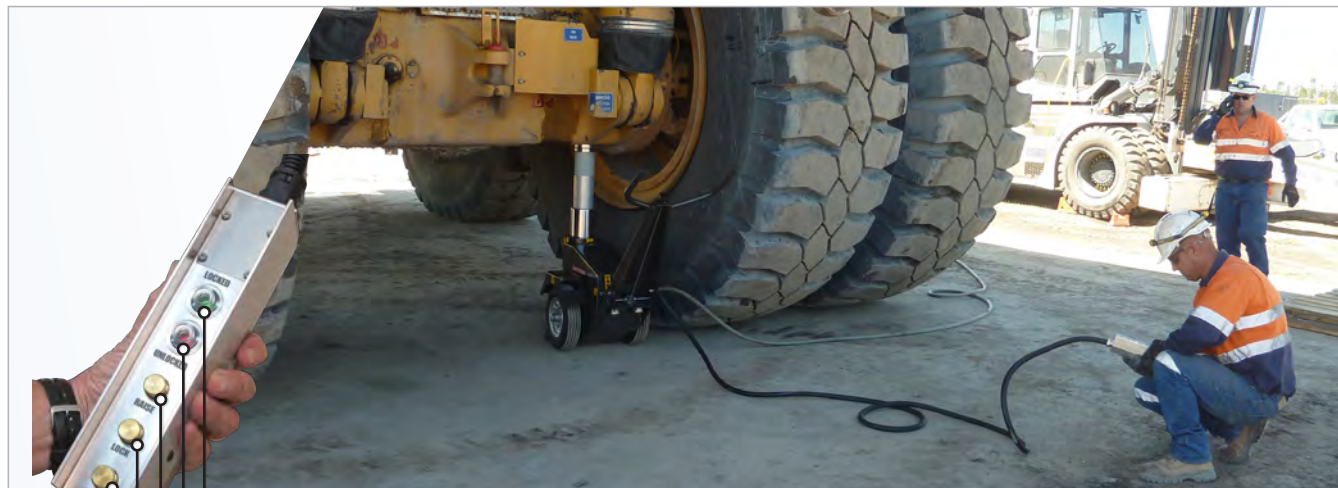


5 METRE LONG REMOTE PENDANT

DURAPAC

OVERVIEW

The DURAPAC SDL Jack is designed with operator safety as a top priority. It features a 5-metre-long remote pendant and jack-mounted mechanical indicators, allowing the operator to work at a safe distance from the vehicle being lifted. With a simple press of "Lift" followed by "Lock", the Safe-D-Lock converts into an approved safety support stand.



LOCKED INDICATOR

When the green indicator is displayed this confirms to the operator that the jack is ready to be mechanically locked.

UNLOCKED INDICATOR

When the red indicator is displayed it confirms to the operator that the jack IS NOT mechanically locked and that the quadrants are disengaged during lowering.

RAISE CONTROL BUTTON

When the Raise control button is held down the jack will advance, the green indicator will display and retract through this process as the quadrants are engaged and disengaged as part of the jack's fail safe mechanism.

LOCK CONTROL BUTTON

During lifting, the green indicator confirms that the quadrants are engaged and ready to lock. The operator then releases the Raise control button and presses the Lock control button; mechanically locking the jack. A green jack mounted mechanical indicator confirms to the operator that the jack is mechanically locked.

LOWER CONTROL BUTTON

When the Lower control button is held down the jack will automatically disengage the locking quadrants and retract via a smooth, load lowering hydraulic counter balance valve.

Lock Indicators

The Safe-D-Lock jack is equipped with jack mounted mechanical indicators to confirm to the operator when the unit is mechanically locked as a vehicle support stand.

RED INDICATOR

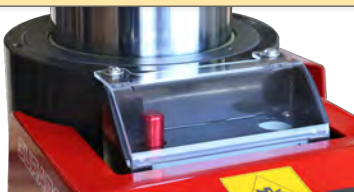
lock quadrants are retracted and in an unlocked state.

GOLD INDICATOR

lock quadrants are engaged and ready to be locked.

GREEN & GOLD INDICATOR

lock quadrants are holding load mechanically.



LATEST ADD-ONS

DURAPAC

COLOUR CODING

Did you know that SDL jacks can be ordered with factory-applied colour coding to simplify asset management on site? As the authorised Durapac distributor in Australia, Specialised Force is committed to supporting industry with high-quality products, expert service, and tailored solutions. Through regular site visits, we work closely with customers—listening, observing, and identifying practical ways to improve operations. One common challenge we've observed, particularly on mine sites, is the difficulty in tracking tooling assets across various work areas such as maintenance sheds, tyre bays, and dozer sheds. Tools are often borrowed and not returned promptly, leading to confusion, delays, and unnecessary downtime. During one of our visits, we noticed a customer had spray-painted their jack to mark ownership. This inspired a better, more professional solution: offering colour coding as a factory-applied service.

This simple yet effective option has delivered real results:

- Quick and easy asset identification
- Fewer disputes between teams
- Improved tracking of tools across departments

Factory-applied colour coding has proven to be a practical way to streamline asset management across complex sites, saving time and reducing operational disruptions.



LATEST ADD-ONS

PICKING UP & DROPPING OFF SDL JACKS

Let us handle the heavy lifting. We now offer a unique service for picking up and dropping off large, expensive-to-transport SDL jacks & stands used for lifting "ultra" class dump trucks and dozers. We pick them up from your site, take them to our workshop, and deliver them back to you. You save time and money, while we take the hassle off your hands.



* Available at selected branches only. Contact Specialised Force for more details.

DURAPAC



SDL SERIES JACKS & DJS SERIES JACK STANDS

PRE-START CHECKLIST FOR SDL JACKS

The concept is simple—but it's proven to significantly enhance operator safety. These prestart booklets help ensure every SDL jack remains in prime condition by guiding operators through essential safety and maintenance checks. We've been developing and trialling small batches of these booklets for some time now, and the final results have exceeded our expectations. Now, they're available for order. Each booklet is designed to be stored in a clear pocket that can be easily attached to the back of the jack handle, keeping it accessible and protected at all times.

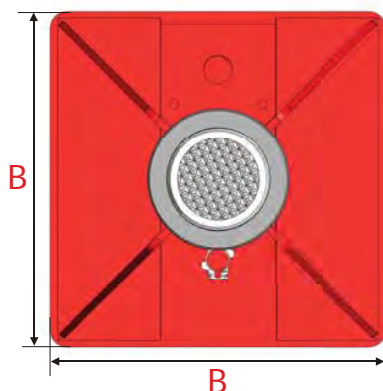
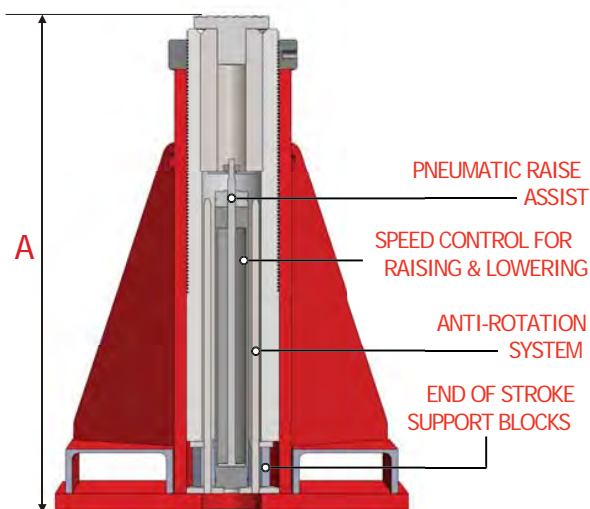


Don't wait—contact your local Specialised Force representative today to get your copy.

DJS SERIES JACK STAND

OVERVIEW

The DJS Series Jack Stand is specifically designed to complement the Durapac SDL Locking Jacks. Rated and certified to 100 tonnes, the stands comply with the AS/NZS 2538:2004 standard for vehicle support stands. A pneumatic assist raises the central piston against the vehicle, while the operator winds down the lock nut to secure the load. The DJS Series features fork tine pockets and shackle lifting points for easy handling. It is compatible with standard SDL extensions, load caps, and swivel load caps. The stands can also be permanently joined via continuous tine pockets to create dedicated configurations for specific vehicles or applications.

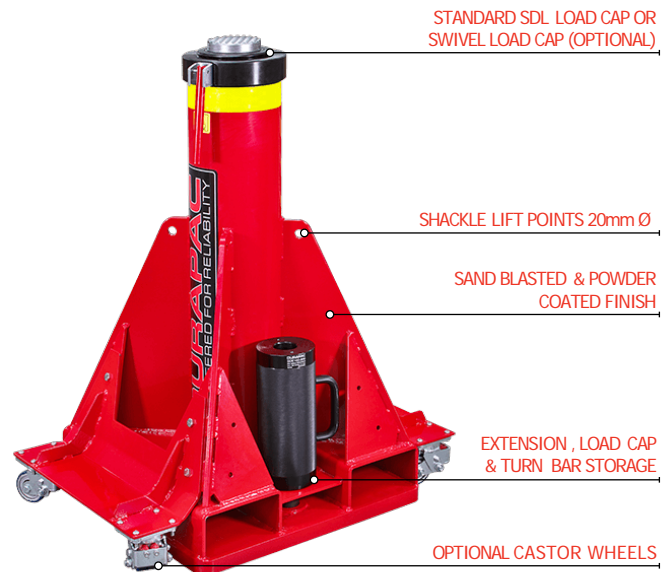
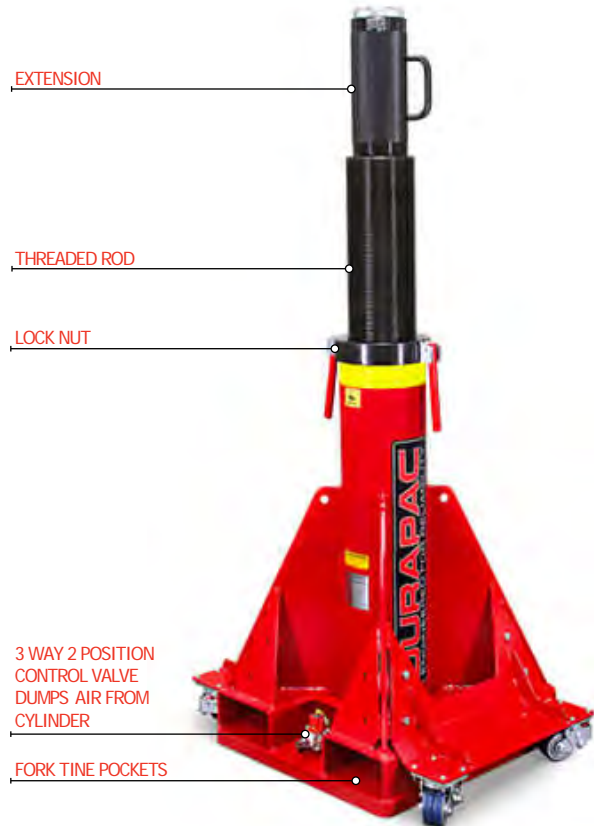


SPECIFICATIONS

Model Number	Load Capacity (tonne)	Min. Height (mm)	Max. Height (mm)	Base WxL (mm)	Air Pressure Rating (bar)	Max. Rated Height (mm)	Weight (kg)
DJS-650	100	650	900	600x600	7	1,100	274
DJS-800	100	800	1,200	600x600	7	1,500	323
DJS-1000	100	1,000	1,400	600x600	7	1,700	370

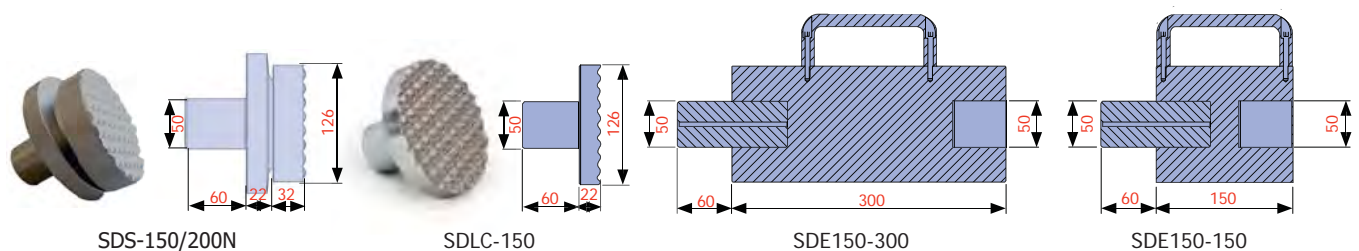
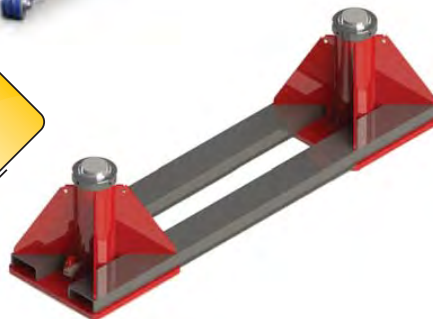
DJS SERIES JACK STAND

DURAPAC



Did you know...

Two or more jack stands can be permanently joined together to form dedicated stands for specific applications.



ACCESSORIES

Model Number	Description	Height (mm)	Diameter (mm)	Spigot Depth (mm)	Spigot Diameter (mm)	Weight (kg)
SDE150-150	150 mm Extension **	150	126	60	50	7
SDE150-200	200 mm Extension **	200	126	60	50	9
SDE150-250	250 mm Extension **	250	126	60	50	11
SDE150-300	300 mm Extension **	300	126	60	50	13
SDLC-150	Serrated Steel Load Cap *	22	126	60	50	3
SDS-150/200N	Serrated Tilt Saddle **	54	126	60	50	5

* Supplied as standard
** Optional item

Warning

No more than one extension to be used

SDL SERIES EXTRA COMPACT SAFE-D-LOCK JACK

DURAPAC

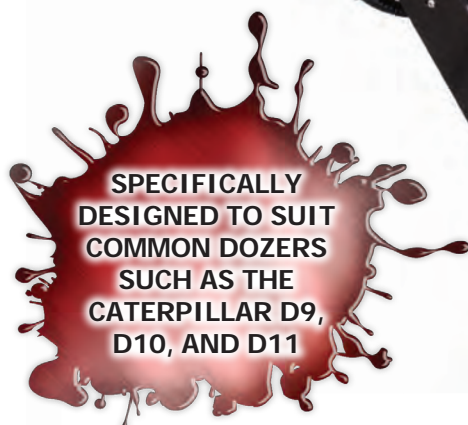
OVERVIEW

The extra compact Safe-D-Lock (SDL) Jack is a lifting jack and rated vehicle jack stand designed for heavy mining vehicles with low-height, narrow-width jacking points. These jacks were developed to suit a Cat® dozer or similar vehicles with restricted jacking access. They offer all the safety features of a standard SDL but in a more compact size.



Australian designed and built to meet AS/NZS 2693:2007 standard for vehicle jacks, it also meets AS/NZS 2538:2004 standard for vehicle support stands

For **Accessories**, refer to pages 22-23.



SDL-10055

SPECIFICATIONS

Model Number	Jack Capacity			Cylinder Effective Area (cm ²)	A Collapsed Height (mm)**	B Base Plate Diameter (mm)	C Folded Length (mm)	D Jack Length (mm)	Stroke (mm)	Max. Lift Height (mm)***	Oil Tank Capacity (L)	Weight (kg)
	Metric (tonne)	US (ton)*	(kN)									
SDL-10055	100	110	980	143	550	505	1147	2027	274	1250	24	320

* Nominal Cylinder Capacity in ton - see kN values for actual capacity.

** Includes load cap height of 22 mm

*** Maximum lift height for AS/NZS 2538:2004 Vehicle Support Stand Rating

SDL SERIES EXTRA COMPACT SAFE-D-LOCK JACK

DURAPAC

SDL SERIES JACKS & DJS SERIES JACK STANDS

specialisedforce.com.au

TILT ADJUSTABLE HANDLE

for ease of manoeuvring and compact storage

COLLAPSED HEIGHT

550 mm

SERRATED STEEL LOAD CAP

included as standard

HIGH STRENGTH STEEL BASE PLATE

resists deformation

LIFTING EYES

allow slinging of the jack

ALUMINIUM REMOTE PENDANT

with mounted lock and unlock indicators & 5 M hose for added safety

NARROW WIDTH

620 mm

TYRES WITH ALLOY RIMS

heavy duty, polyurethane filled, puncture-proof, large rolling diameter (450 mm)



CAPACITY

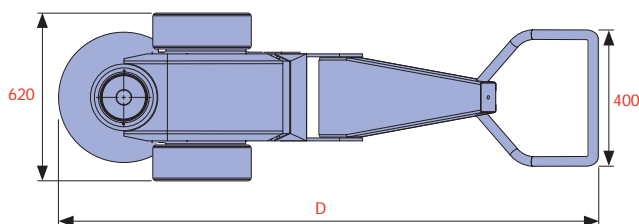
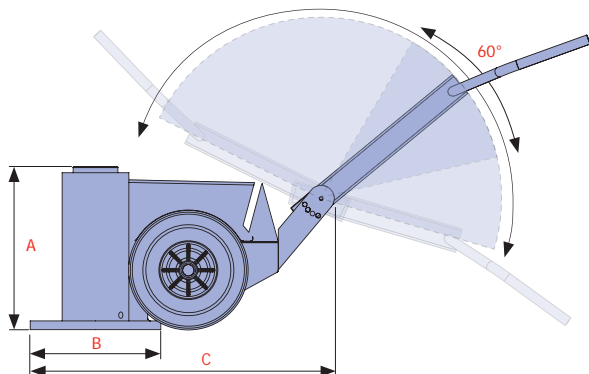
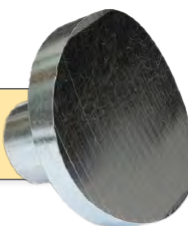
**100 tonne
(110 US ton)**

STROKE

274 mm



Radius saddles available - consult Specialised Force



SDL SERIES SAFE-D-LOCK JACK + POWERDRIVE

DURAPAC

OVERVIEW

The Safe-D-Lock (SDL) Jack + PowerDrive is a self-propelled lifting jack and rated vehicle jack stand designed for heavy mining vehicles. Its revolutionary design prioritises operator safety, featuring patented oil-bathed internal locking quadrants with a 3:1 safety factor. A 5-metre remote lead allows the operator to remain safely away from the lifting area during lifting, lowering, and locking operations. Dual independent DC motors, powered by two M18™ REDLITHIUM™ batteries, drive the wheels and allow the jack to self-propel up slopes of up to 5 degrees. Compact, portable, and safe, the Safe-D-Lock Jack + PowerDrive is the ideal solution for workshops or service vehicles.



SDL-15096-PD



Australian designed and built to meet AS/NZS 2693:2007 standard for vehicle jacks, it also meets AS/NZS 2538:2004 standard for vehicle support stands

For **Accessories**, refer to pages 22-23.



SPECIFICATIONS

Model Number	Jack Capacity			Cylinder Effective Area (cm ²)	A Collapsed Height (mm)**	B Base Plate Diameter (mm)	C Folded Length (mm)	D Jack Length (mm)	Stroke (mm)	Max. Lift Height (mm)***	Oil Tank Capacity (L)	Weight (kg)
	Metric (tonne)	US (ton)*	(kN)									
SDL-07068-PD	70	77	686	143	680	505	1147	2174	404	1408	24	390
SDL-07081-PD	70	77	686	143	812	505	1147	2174	535	1680	24	420
SDL-10068-PD	100	110	980	143	680	505	1147	2174	404	1408	24	390
SDL-10081-PD	100	110	980	143	812	505	1147	2174	535	1680	24	420
SDL-15068-PD	135	150	1324	254	680	505	1147	2174	406	1408	24	470
SDL-15096-PD	135	150	1324	254	964	520	1154	2181	685	1680	24	550
SDL-20068-PD	181	200	1781	254	680	505	1147	2174	406	1408	24	470
SDL-20096-PD	181	200	1781	254	964	520	1154	2181	685	1680	24	550

A non-POWERDRIVE option is also available – to order, use jack model number without “-PD” suffix (eg. SDL-10068)

* Nominal Cylinder Capacity in ton - see kN values for actual capacity.

** Includes load cap height of 22 mm

*** Maximum lift height for AS/NZS 2538:2004 Vehicle Support Stand Rating

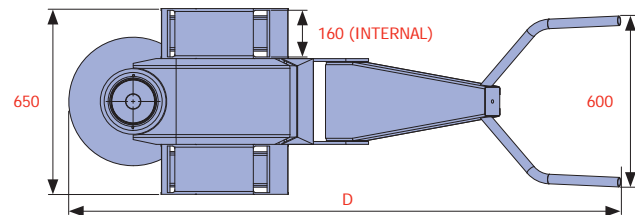
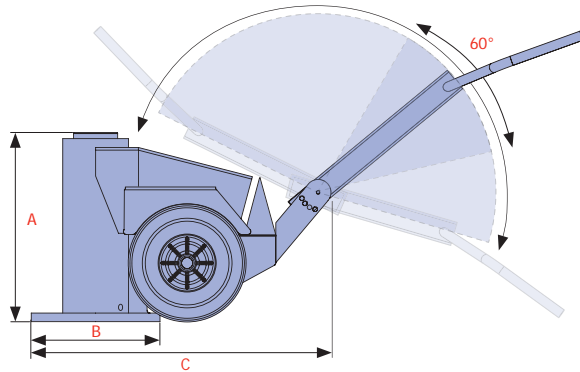
SDL SERIES SAFE-D-LOCK JACK + POWERDRIVE

DURAPAC



CAPACITY
70 - 181 tonne
(77 - 200 US ton)

STROKE RANGE
400 - 685 mm



PATENTED FAIL SAFE

spring loaded
mechanical locking
system. Can be
locked in 13 mm
increments

INDEPENDENT DEADMAN SWITCHES[#]

for easy manoeuvring and safety

MECHANICAL QUADRANT LOCKS

hold a minimum 3 x rated jack capacity without failure

**THREE POSITION
TOGGLE[#]**

F (Forward) N (Neutral)
R (Reverse)

**SERRATED STEEL
LOAD CAP**

included as standard

LOCK INDICATORS

confirm 'locked' and 'unlocked' status

LIFTING POINTS

allows easy forklift access

**TILT ADJUSTABLE
HANDLE**

for ease of manoeuvring
and compact storage

AIR MOTOR

powered by a 3.9 kW
Gast® air motor

**ALUMINIUM
REMOTE PENDANT**

with mounted lock and
unlock indicators & 5 M
hose for added safety

**HIGH STRENGTH
STEEL BASE PLATE**

resists deformation

**LOCKABLE ISOLATION
VALVE**

relieves downstream air for
extra safety and security

TYRES WITH ALLOY RIMS

heavy duty, polyurethane filled, puncture-
proof, large rolling diameter (450 mm)

[#] only available on -PD models

SDL SERIES JACKS & DJS SERIES JACK STANDS

specialisedforce.com.au

SDN SERIES JACK + POWERDRIVE

DURAPAC

OVERVIEW

The SDN-Series Jack is an ergonomically designed, portable jacking system that can be easily wheeled around a job site. It is built to lift heavy mining vehicles and can be used on any hard surface, such as maintenance bays and workshops. The unit is easily transported to site by ute. Its wheeled chassis features an ergonomically designed, adjustable handle system, allowing it to be moved easily by one person. The chassis frame is made from steel (not cast) for maximum durability and longevity. For safety, a 5-metre remote control pendant is included to keep the operator clear of potential hazards. Optional U-rings, tilt saddles, and extensions are also available.



Australian designed and built to meet AS/NZS 2693:2007 standard for vehicle jacks, it also meets AS/NZS 2538:2004 standard for vehicle support stands

For Accessories, refer to pages 22-23.



SDN-10086-PD

SPECIFICATIONS

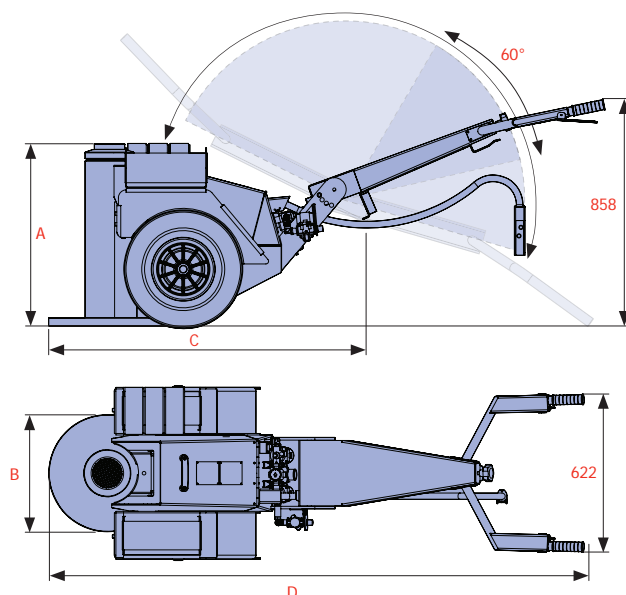
Model Number	Jack Capacity			Cylinder Effective Area (cm ²)	A Collapsed Height (mm)**	B Base Plate Diameter (mm)	C Folded Length (mm)	D Jack Length (mm)	Stroke (mm)	Oil Tank Capacity (L)	Weight (kg)
	Metric (tonne)	US (ton)*	(kN)								
SDN-10068-PD	100	110	980	143	689	505	1147	2177	400	24	398
SDN-10086-PD	100	110	980	143	860	505	1147	2177	571	24	440
SDN-15068-PD	135	150	1324	254	686	505	1147	2177	400	24	476
SDN-15096-PD	135	150	1324	254	975	520	1154	2184	685	24	560
SDN-20068-PD	181	200	1781	254	686	505	1147	2177	400	24	476
SDN-20096-PD	181	200	1781	254	975	520	1154	2184	685	24	560

A non-POWERDRIVE option is also available – to order, use jack model number without “-PD” suffix (eg. SDL-10068)

* Nominal Cylinder Capacity in ton - see kN values for actual capacity. ** Includes load cap height of 22 mm

SDN SERIES JACK + POWERDRIVE

DURAPAC



CAPACITY

**100 - 181 tonne
(110 - 200 US ton)**

STROKE RANGE

400 - 685 mm

SDL SERIES JACKS & DJS SERIES JACK STANDS

SERRATED STEEL LOAD CAP

included as standard

U-RINGS

for mechanical load support
(optional)

U-RINGS HOLDER

for storage of U-ring saddles

LIFTING POINTS

allows easy forklift access

**HIGH STRENGTH STEEL
BASE PLATE**

resists deformation

**INDEPENDENT
DEADMAN
SWITCHES #**

for easy manoeuvring
and safety

TILT ADJUSTABLE HANDLE

for ease of manoeuvring
and compact storage

**THREE
POSITION
TOGGLE #**

F (Forward)
N (Neutral)
R (Reverse)

**ALUMINIUM
REMOTE PENDANT**

with mounted lock and
unlock indicators & 5 M
hose for added safety

TYRES WITH ALLOY RIMS

heavy duty, polyurethane filled, puncture-
proof, large rolling diameter (450 mm)

only available on -PD models

SDL SERIES SLIMLINE SAFE-D-LOCK JACK

DURAPAC

OVERVIEW

The Slimline Safe-D-Lock (SDL) Jack is a lifting jack and rated vehicle jack stand designed for heavy mining vehicles where narrow access is required. These jacks are specifically engineered to suit KRESS/Cat® trucks, allowing access within double wheel structures or other confined spaces. They offer all the safety features of a standard SDL, but in a slimmer, more compact design.



Australian designed and built to meet AS/NZS 2693:2007 standard for vehicle jacks, it also meets AS/NZS 2538:2004 standard for vehicle support stands

For **Accessories**, refer to pages 22-23.



SDL-10055-KR

SPECIFICATIONS

Model Number	Jack Capacity			Cylinder Effective Area (cm ²)	A Collapsed Height (mm)**	B Base Plate Diameter (mm)	C Folded Length (mm)	D Jack Length (mm)	Stroke (mm)	Max. Lift Height (mm)***	Oil Tank Capacity (L)	Weight (kg)
	Metric (tonne)	US (ton)*	(kN)									
SDL-10055-KR	100	110	980	143	550	505	1147	2027	274	1250	24	270
SDL-10068-KR	100	110	980	143	680	505	1147	2027	404	1408	24	290

* Nominal Cylinder Capacity in ton - see kN values for actual capacity.

** Includes load cap height of 22 mm

*** Maximum lift height for AS/NZS 2538:2004 Vehicle Support Stand Rating

SDL SERIES SLIMLINE SAFE-D-LOCK JACK

DURAPAC

TILT ADJUSTABLE HANDLE

for ease of manoeuvring and compact storage

SERRATED STEEL LOAD CAP

included as standard

LIFTING EYES

allow slinging of the jack

HIGH STRENGTH STEEL BASE PLATE

resists deformation

ALUMINIUM REMOTE PENDANT

with mounted lock and unlock indicators & 5 M hose for added safety

NARROW WIDTH

520 mm maximum width at the wheels

SOLID WHEELS

are cast steel with a polyurethane coating

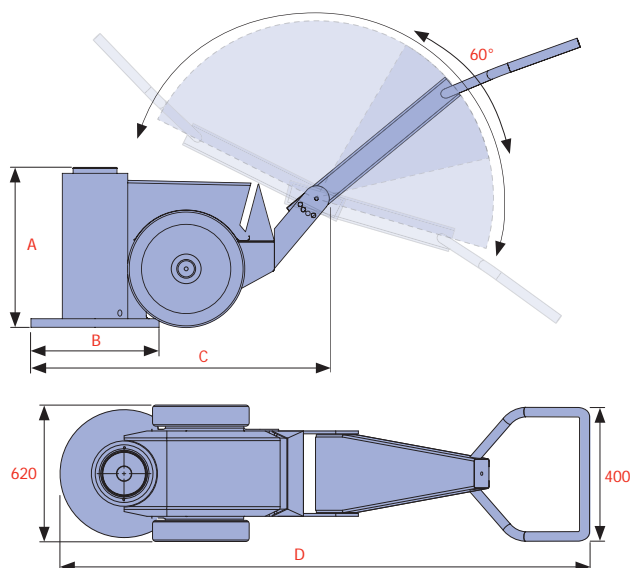


CAPACITY

100 tonne
(110 US ton)

STROKE RANGE

274 - 404 mm



SDL SERIES TALL SAFE-D-LOCK JACK + POWERDRIVE **DURAPAC**

OVERVIEW

The Tallest Safe-D-Lock (SDL) Jack + PowerDrive safely achieves extended lifting heights and is a rated vehicle jack stand designed for heavy mining vehicles. These jacks offer the tallest rated lockable height in our range, thanks to a larger base plate and a strengthened, gusset-supported cylinder. Even when fully extended, the jack remains compliant with Australian Standards for vehicle jacks and support. The PowerDrive system allows the jack to be moved safely and easily into the optimal position.



Australian designed and built to meet AS/NZS 2693:2007 standard for vehicle jacks, it also meets AS/NZS 2538:2004 standard for vehicle support stands

For **Accessories**, refer to pages 22-23.



SDL-20096-PD-620

SPECIFICATIONS

Model Number	Jack Capacity			Cylinder Effective Area (cm ²)	A Collapsed Height (mm)**	B Base Plate Diameter (mm)	Stroke (mm)	Max. Lift Height (mm)***	Oil Tank Capacity (L)	Weight (kg)
	Metric (tonne)	US (ton)*	(kN)							
SDL-20096-PD-620	181	200	1,781	254	960	620	685	2,100	24	590

* Nominal Cylinder Capacity in ton - see kN values for actual capacity.

** Includes load cap height of 22 mm

*** Maximum lift height for AS/NZS 2538:2004 Vehicle Support Stand Rating

SDL SERIES TALL SAFE-D-LOCK JACK + POWERDRIVE **DURAPAC**

EXTENDED HEIGHT

2,100 mm

TILT ADJUSTABLE HANDLE

for ease of manoeuvring and compact storage

INDEPENDENT DEADMAN SWITCHES

for easy manoeuvring and safety

THREE POSITION TOGGLE

F (Forward) N (Neutral) R (Reverse)

LARGER BASE PLATE

increases stability

SERRATED STEEL LOAD CAP

included as standard. Custom load caps and tilt saddles are available

ALUMINIUM REMOTE PENDANT

with mounted lock and unlock indicators & 5 M hose for added safety

LOCKABLE ISOLATION VALVE

relieves downstream air for extra safety and security

GUSSET SUPPORTED CYLINDER

for added strength to allow extended lifting height

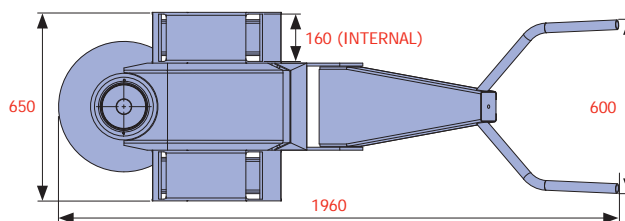
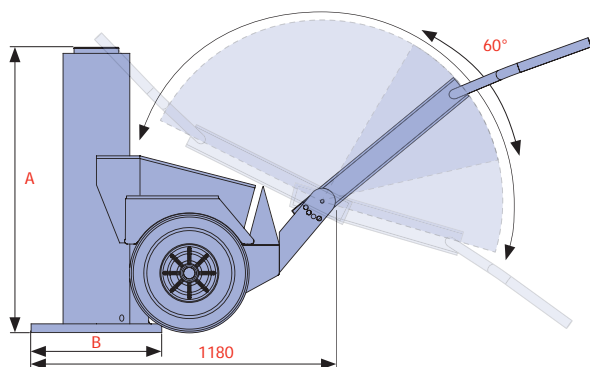


CAPACITY

**181 tonne
(200 US ton)**

STROKE

685 mm



SDE-200-500

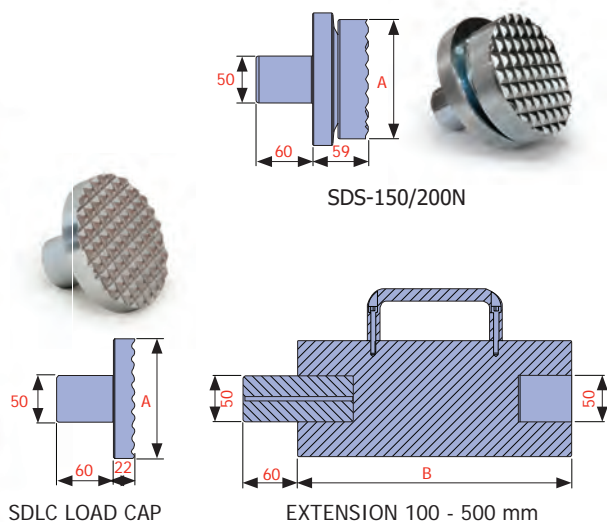


SDE-200-400

SD SERIES ACCESSORIES

OVERVIEW

The SD accessories are designed to suit the compact Safe-D-Lock Jack and its extended family of jacks. This includes the PowerDrive, Extra Compact, Tallest, Slimline, and SDN-Series jacks, as well as the DJS-Series jack stands.



SDL
WITH
CUSTOM
LOAD CAP

ACCESSORIES

Model Number	Capacity (ton)	Description	A Diameter (mm)	B Height (mm)	Spigot Depth (mm)	Spigot Diameter (mm)	Weight (kg)	Suits Model(s)
SDE100-100	70/100	100 mm Extension	126	100	60	50	7	SDL/SDN 70 & 100 ton
SDE100-150	70/100	150 mm Extension	126	150	60	50	7	
SDE100-200	70/100	200 mm Extension	126	200	60	50	7	
SDE100-300	70/100	300 mm Extension	126	300	60	50	13	
SDE100-400	70/100	400 mm Extension	126	400	60	50	13	
SDLC-100	70/100	Serrated Steel Load Cap*	112	22	60	50	3	SDL/SDN/DJS 150 ton
SDS-100N	70/100	Serrated Tilt Saddle	108	50	60	50	5	
SDE150-150	150	150 mm Extension	126	150	60	50	7	
SDE150-200	150	200 mm Extension	126	200	60	50	7	
SDE150-250	150	250 mm Extension	126	250	60	50	7	
SDE150-300	150	300 mm Extension	126	300	60	50	13	SDL/SDN/DJS 150 & 200 ton
SDE150-350	150	350 mm Extension	126	350	60	50	13	
SDLC-150	150	Serrated Steel Load Cap*	126	22	60	50	3	
SDS-150/200N	150/200	Serrated Tilt Saddle	126	59	60	50	5	
SDE200-100	200	100 mm Extension	141	100	60	50	8	SDL/SDN/DJS 200 ton
SDE200-150	200	150 mm Extension	141	150	60	50	8	
SDE200-200	200	200 mm Extension	141	200	60	50	15	
SDE200-300	200	300 mm Extension	141	300	60	50	15	
SDE200-400	200	400 mm Extension	141	400	60	50	15	
SDE200-500	200	500 mm Extension	141	500	60	50	15	SDL/SDN/DJS 200 ton
SDLC-200	200	Serrated Steel Load Cap*	126	22	60	50	4	

* Supplied as standard

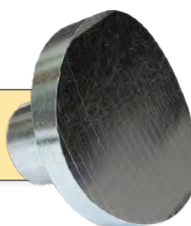
Custom load caps are available - consult Specialised Force

SD SERIES ACCESSORIES

DURAPAC



Radius saddles available - consult Specialised Force



SERRATED STEEL LOAD CAP

included as standard



CARRY HANDLE INCLUDED

made from high strength aluminium

U-RINGS

for mechanical load support

ACCESSORIES

Model Number	Capacity (ton)	Description	Height (mm)	Weight (kg)	Suits Model(s)
SDNU-100-15	100	15 mm U-ring Saddle	15	0.6	SDN 100 ton
SDNU-100-25	100	25 mm U-ring Saddle	25	0.9	
SDNU-100-75	100	75 mm U-ring Saddle	75	2.8	
SDNU-100-100	100	100 mm U-ring Saddle	100	3.6	
SDNU-100-250	100	250 mm U-ring Saddle	250	9	
SDNU-200-15	150/200	15 mm U-ring Saddle	15	CONTACT SF	SDN 150 ton
SDNU-200-25	150/200	25 mm U-ring Saddle	25		
SDNU-200-75	150/200	75 mm U-ring Saddle	75		
SDNU-200-100	150/200	100 mm U-ring Saddle	100		
SDNU-200-250	150/200	250 mm U-ring Saddle	250		



SERVICE AND SOLUTIONS YOU CAN TRUST

DURAPAC



Equipment Service/Repair



Calibration Capability



Installation & Commissioning

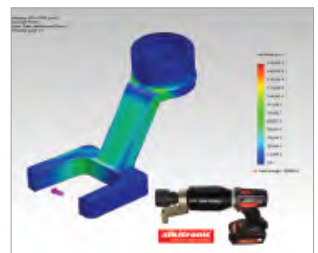


Spare Parts Stock



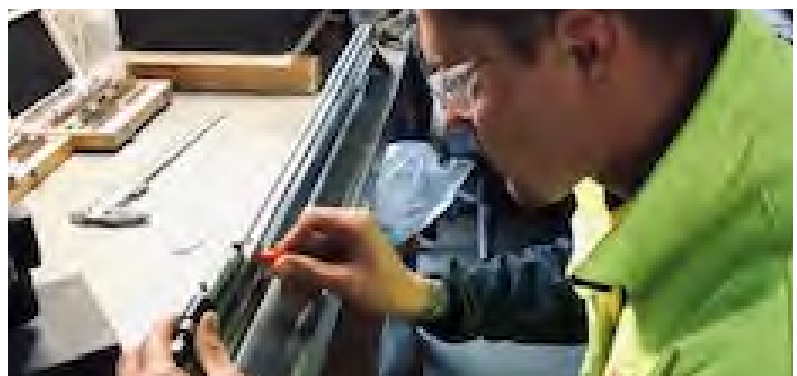
Testing/Tagging Capability

- National Network of fully equipped Workshops
- After Sales Service / Repair / Maintenance support for the Product Brands we offer along with alternative Brands
- Customer Site and Workshop based Test/Tag, Calibration & Audit Capabilities
- Product Application/Solution Technical support
- Tailored Asset Management Programs & Service
- Development of Customised Equipment/Asset Registers
- Training & Development of Personnel in the Safe and Compliant use of typical Products within our range



ONE STOP WORKSHOP FOR CALIBRATING & TESTING PRECISION MEASURING EQUIPMENT

- Depth Micrometers
- Dial Indicator (Plunger)
- Dial Indicator (Lever)
- Gauge Blocks
- Height Micrometers
- Inside Micrometers
- Micrometer heads
- Outside Micrometers
- Riser blocks
- Vernier Calipers
- Vernier Height
- Gauge



* Available at selected branches only.
Contact Specialised Force for more details.

SDL JACKS EXAMPLE APPLICATIONS

MINING, AUTOMOTIVE AND RAIL INDUSTRIES

DURAPAC

SDL SERIES JACKS & DJS SERIES JACK STANDS



specialisedforce.com.au

CUSTOMER SITE – SDL JACK LIFECYCLE MANAGEMENT **DURAPAC** CAPABILITIES & METHODOLOGY BEYOND SERVICE

Our capabilities and methodology for managing customer SDL assets go far beyond standard service.

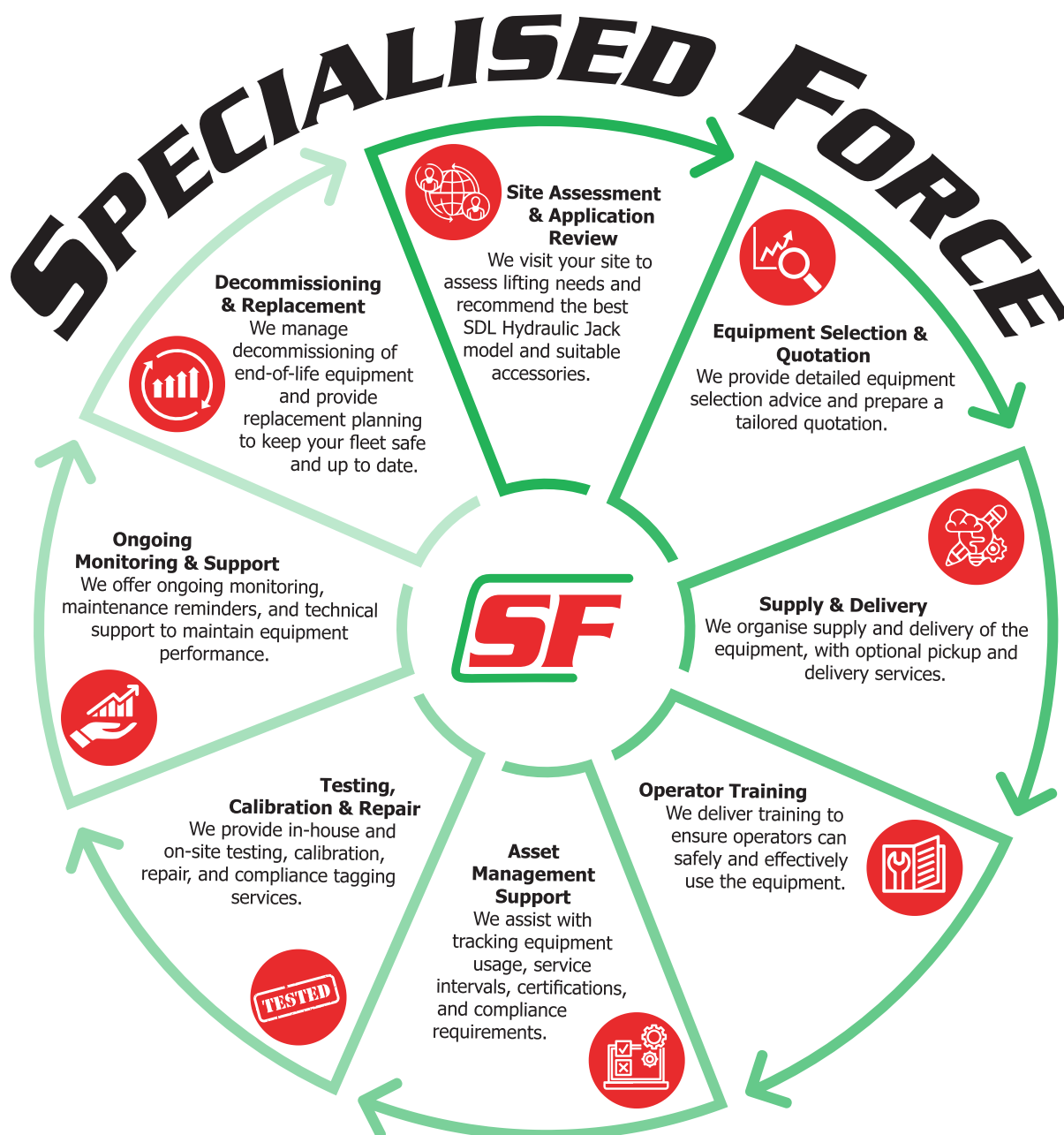
We manage the complete lifecycle of SDL Air Hydraulic Jacks and related equipment.

Our process begins with a site assessment and application review to fully understand your lifting requirements and recommend the most suitable SDL jack models and accessories. We then provide expert equipment selection advice and prepare a detailed quotation tailored to your needs.

Once approved, we coordinate supply and delivery, with optional pickup and delivery services for your convenience. We also provide operator training to ensure your team can safely and effectively use the equipment.

Our asset management support enables you to track equipment usage, certifications, and service intervals. We offer both in-house and on-site testing, calibration, repairs, and compliance tagging to maintain peak equipment performance.

Throughout the equipment's service life, we provide ongoing monitoring, scheduled maintenance reminders, and technical support. When the equipment reaches the end of its life cycle, we manage decommissioning and replacement planning, helping you maintain a safe, reliable, and compliant lifting fleet.

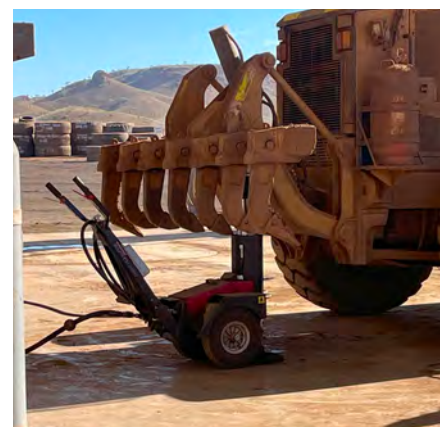
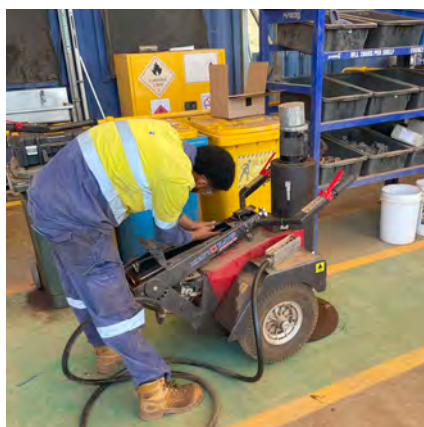
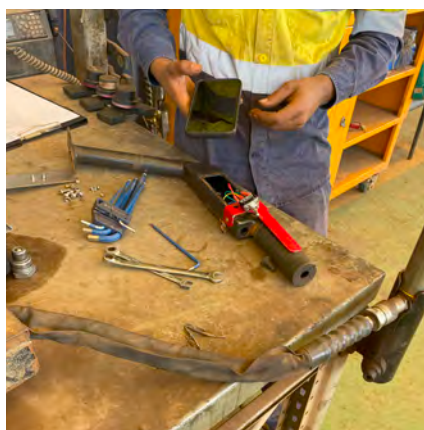
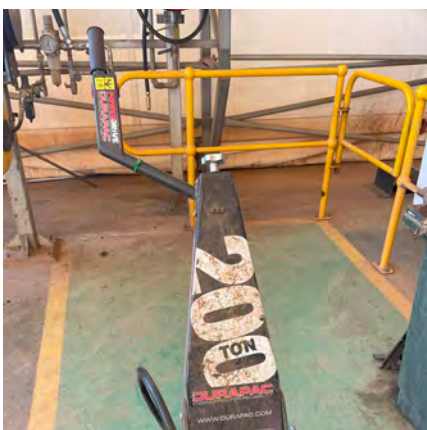


* Available at selected branches only. Contact Specialised Force for more details.

CUSTOMER SITE – SDL JACK LIFECYCLE MANAGEMENT

DURAPAC

TYPICAL EXAMPLES OF SDL JACKS WE DELIVER, INSPECT, REPAIR, TEST & TAG



SDL SERIES JACKS & DJS SERIES JACK STANDS

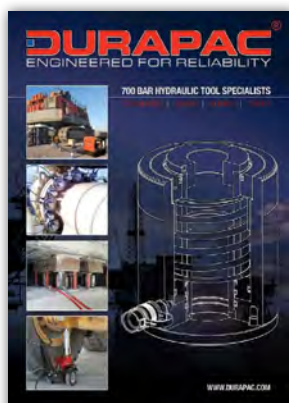
specialisedforce.com.au

VISIT OUR WEBSITE AND EXPLORE ALL OUR CATALOGUES

DURAPAC

SDL SERIES JACKS & DJS SERIES JACK STANDS

specialisedforce.com.au



**Locations
Australia
Wide**



Sydney (Head Office)

131 Woids Avenue
Carlton, NSW 2218
(02) 9547 1844
sales@specialisedforce.com.au

Brisbane

2/68 Northlink Place
Northgate QLD, 4013
(07) 3256 6011
qldsales@specialisedforce.com.au

Adelaide

23 Ceafield Rd
Para Hills West, SA, 5096
(08) 8352 8866
sasales@specialisedforce.com.au

Darwin

Unit 4/17 Willes Road
Berrimah NT, 0828
(08) 8984 4453
ntsales@specialisedforce.com.au

Port Hedland

4/13 Cajarina Road
Wedgefield, WA 6721
(08) 9172 1113
phsales@specialisedforce.com.au

Melbourne

2/18 Southfork Drive
Kilsyth Vic 3137
(03) 9761 4199
vicsales@specialisedforce.com.au

Townsville

Unit 2/1 Civil Road
Garbutt QLD, 4814
(07) 4728 8756
nqldsals@specialisedforce.com.au

Perth

17 - 19 Augusta Street
Willetton, WA 6155
(08) 9354 8544
wasales@specialisedforce.com.au

Hobart

Office 22, 370-380 Cambridge Road,
Morningside TAS, 7018 Tasmania
0427 423 217

