



# FIRST LUTHERAN CHURCH

## Connecting people to God and to each other.

**CONNECT** We connect all people to God and to each other. We warmly welcome and invite everyone to participate and engage in ministry, with a special focus on hospitality, small group ministry, and immersive spiritual experiences and events.

**WORSHIP** We strive for worship to be invitational, contagious, and missional. We want to connect people to God's love, and we will do anything to erase any barrier or hurdle that prohibits people from a spirit of worship.

**IMPACT** We will make a difference in this world as Jesus-followers. We will engage in unparalleled acts of service, encourage outrageous generosity, and strive to leave a long-lasting impact on the next generation.

CONNECT | WORSHIP | IMPACT

*Welcome!*

*We are glad you're here.*

619 Broadway N, Fargo ND | 701.235.7389

[www.flcfargo.org](http://www.flcfargo.org) | [info@flcfargo.org](mailto:info@flcfargo.org)

Wi-Fi: FLCGuest, password: FLC@Ø619

## WELCOME TO CELEBRATION WORSHIP

SUNDAYS - 9 & 10:30 A.M.

### WELCOME & ANNOUNCEMENTS

**SONG:** *Let It Rise*

**SONG:** *The King of Love My Shepherd Is*

### CONFESSION

**SONG:** *You Are My King*

**SCRIPTURE:** *John 21:15-19*

**MESSAGE:** Rollie Johnson

### OFFERING

**SONG:** *Great Are You Lord*

### PRAYERS FOR GOD'S PEOPLE

### WORDS OF PROMISE

### THE LORD'S PRAYER

### COMMUNION

### SONG:

*Amazing Grace (My Chains Are Gone)*  
*How Great Is Our God*

### BLESSING

**SONG:** *With Every Act of Love*



# WELCOME TO SANCTUARY WORSHIP

JAZZ SUNDAY - 9 A.M.

## PRELUDE:

Selections from the Dixieland Jazz Group

## WELCOME & ANNOUNCEMENTS

## CONFESSION & FORGIVENESS:

Leader: Alleluia! Christ is Risen!

**Congregation: He is risen indeed! Alleluia!**

L: Blessed be the holy Trinity, one God, who gives us a new birth into a living hope, who raises us with Christ from death, who fills us with the Holy Spirit.

**C: Amen.**

L: Let us repent of our sin, and claim the promise of God.

*Silence for reflection.*

L: God of all mercy and consolation, come to the help of your people, turning us from our sin to live for you alone. Give us the power of your Holy Spirit that we may confess our sin, receive your forgiveness, and grow into the fullness of Jesus Christ, our Saviour and Lord.

**C: Amen.**

L: Gracious God,

**C: have mercy on us. We confess that we have turned from you and given ourselves into the power of sin. We are truly sorry and humbly repent. In your compassion forgive us our sins, known and unknown, things we have done and things we have failed to do. Turn us again to you, and uphold us by your Spirit, so that we may live and serve you in newness of life through Jesus Christ, our Savior and Lord. Amen.**

L: God, who is rich in mercy, loved us even when we were dead in sin, and made us alive together with Christ. By grace you have been saved. In the name of Jesus Christ, your sins are forgiven. Almighty God strengthen you with power through the Holy Spirit, that Christ may live in your hearts through faith.

**C: Amen.**

**OPENING HYMN:** *Amazing Grace*

**(LBW #448, vs 1-4)**

## CATHEDRAL CHOIR & DIXIELAND BAND:

*Steal Away* – arr. Norman Luboff;

David Ferreira, conductor; Bill Tweten, accompanist

## GREETING

## PRAYER OF THE DAY:

L: Let us pray,

**C: Holy God, you have called us to follow in the way of your risen Son, and to care for those who are our companions, not only with words of comfort, but with acts of love. Seeking to be true friends of all, we offer our prayers on behalf of the church and the world. In your holy name we pray. Amen.**

**HYMN:** *Leaning on the Everlasting Arms* (*see insert*)

**SCRIPTURE:** 2 Kings 5:1-14

## GOSPEL

**C: Alleluia, Lord, to whom shall we go? You have the words of eternal life. Alleluia, alleluia.**

L: John 21:15-19

**C: Glory to you, O Lord.**

L: GOSPEL READING

**C: Praise to you, O Christ.**

**MESSAGE:** Pastor Stephanie Tollefson

**HYMN OF THE DAY:** (*see insert*)

*I Want Jesus to Walk with Me*

**APOSTLES' CREED:** (LBW pg. 85)

## PRAYERS FOR GOD'S PEOPLE

## OFFERING

CONTINUED...

**OFFERING SONG:**

*What a Friend We Have in Jesus (LBW #439)*

**OFFERTORY HYMN: (LBW pg. 75)**

*Create In Me a Clean Heart*

**WORDS OF PROMISE**

**THE LORD'S PRAYER (LBW pg. 76)**

**COMMUNION MUSIC:**

Selections by the Dixieland Jazz Group

**BENEDICTION**

**SENDING HYMN: (see insert)**

*Just a Closer Walk with Thee*

**POSTLUDE:**

*When the Saints Go Marching In*  
Dixieland Jazz Band



**Trumpet**  
**Clarinet**  
**Trombone**  
**Drums**  
**Tuba**  
**Piano**

**Jeremy Brekke**  
**Matt Patnode**  
**Gene Okerlund**  
**Jim Knudson**  
**Doug Neill**  
**David Ferreira**

---

## WEEKLY CALENDAR

**Sunday, April 7 - COMMUNION**

*NO Adult Learning Hour*

- 9 a.m. Worship Service and Jazz Sunday, Sanctuary
- 9 a.m. Worship Service, Celebration Center
- 10:15 a.m. Kids@First Classes, various rooms
- 10:30 a.m. Worship Service, Celebration Center

**Monday, April 8**

- 8:30 a.m. Foot Care Ministry, Fireside Room, lower level
- 9 a.m. Quilters, Adult Ed Room

**Tuesday, April 9**

- 8 a.m. Men's Bible Study, Luther Room
- 9 a.m. MomTalk, Great Hall, nursery open
- 1 p.m. Knit and Crochet Group, Bethany on 42nd
- 2 p.m. Fit and Strong Class, Gym, lower level
- 5:30 p.m. Tae Kwon Do, Gym

**Wednesday, April 10**

- 9 a.m. Abigail Circle, Luther Room
- 1:30 p.m. Wednesday Fellowship, Chapel, Great Hall
- 5 p.m. Wednesday Supper, Great Hall - OPEN to all!
- 5:30 p.m. Joyful Noise Choir Rehearsal, Youth Center
- 6 p.m. Kids@First and 56ERs Classes, various rooms
- 6 p.m. Worship Service, Celebration Center
- 7 p.m. Financial Peace University, Theater, lower level
- 7 p.m. Confirmation Class, various rooms
- 7:10 p.m. Cathedral Choir Rehearsal, Choir Room

- 8 p.m. High School Youth Group, Adult Ed Room

**Thursday, April 11**

- 7 a.m. Global Mission Committee Meeting, Luther Rm
- 12 p.m. Small Group Bible Study, CrossTalk Room #1
- 7 p.m. Recital with a Cause, Celebration Center

**Friday, April 12**

- 9 a.m. First In Mission Lunch Pack, kitchen
- 4 p.m. Wedding of Theresa Schlangen and Loren Anderson, Sanctuary

**Saturday, April 13**

- 10 a.m. Orchestra Rehearsal, Celebration Center

**Sunday, April 14**

- 9 a.m. Worship Service, Sanctuary
- 9 a.m. Worship Service, Celebration Center performance by FLC Orchestra
- 10:15 a.m. Adult Learning Hour, Adult Ed Room
- 10:15 a.m. Kids@First Classes, various rooms
- 10:30 a.m. Worship Service, Celebration Center performance by FLC Orchestra

**On *Sundays*, stop by the Great Hall at 10 a.m. for coffee, refreshments, and a time to connect.**

Calendar also available at [flcfargo.org](http://flcfargo.org) > Calendar



## YOUR COMMUNITY OF FAITH

### YOUR MINISTRY TEAMS

**Pr. Stephanie Tollefson** [stollefson@flcfargo.org](mailto:stollefson@flcfargo.org)  
**Pr. Marty Tollefson** [mtollefson@flcfargo.org](mailto:mtollefson@flcfargo.org)  
**Rollie Johnson** [rjohnson@flcfargo.org](mailto:rjohnson@flcfargo.org)  
 View the entire staff online at [flcfargo.org](http://flcfargo.org)

### Council Officers ([email councilpresident@flcfargo.org](mailto:councilpresident@flcfargo.org))

Stephanie Ahlfeldt, President  
 Jon Erickson, Vice President  
 Matthew Frisk, Treasurer  
 Tracy Farmer, Secretary

### GENEROSITY



**In-Person Giving:** offering plate passed during worship

**Online Giving:** [flcfargo.org](http://flcfargo.org) > GIVE

**Text to Give:** Text dollar amount to 701.354.1495

**Mail a Check:** 619 Broadway N, Fargo, ND 58102

**Scan to Give:** Scan the QR code

### CELEBRATE PRAYER

We believe in the power of prayer. As God's people, please pray for these publicly-requested individuals and their families:

Alicia Mullen-Wolf, Ann Wilson, Arlis Beto, Becky, Bill Parker, Bruce, Bruce Jorgensen, Carmen Long, Carol M., Carole Nelson, Cary Birch, Claryce Iverson, Connie S., Craig Carlson, Dawn, Del Hermann, Doug Aaseby, Florence Moyer, Goodwin Hoff, Janice Ames, Jerry and family, Jim Quittschreiber, Jim Hilde, Jim Hulberg, Judy Loewen, Julia, Kathy Otheim, Kay Maden, Lynn Hanson, Marsha Kapphahn, Mary Ann Berg, Paul Hulberg, Peyton, Pr. Jim Bjorge, Randy and Roxanne, Rick Lau, Tim Haaland, Wanda Schroeder, Wanda Paulson

*God Bless*



## IMPACT



**High schoolers: August 1-8, at Clearwater Cove, Lampe, MO**

**Middle Schoolers: August 9-13, at Castaway Club, DL, MN**

It's not Bible camp without YOU—we want campers eager to connect with God and each other. Step into fellowship outdoors and build lasting relationships with other students and counselors of faith.

**To secure your/your child's spot, contact Alexis Bachmeier today, 701.235.7389 or [abachmeier@flcfargo.org](mailto:abachmeier@flcfargo.org) ..... Leaders go for FREE!**



### HOMELESSNESS AWARENESS EVENTS

**Homelessness Immersion Event: April 20, 9-3:30 p.m., \$10/person**

**Homelessness Book Study: Tuesdays beginning April 23 at 7 p.m.  
or Wednesdays beginning April 24 at 12 p.m.**

Introducing TWO new events with a mission to raise awareness about homelessness. At First Lutheran, we're here to make an impact: Attend one or both events to explore the raw and real implications of being without a home.

**To register for either or both events, visit our website or scan the code.**



## WORSHIP

### SPRING SERMON SERIES

## Come & See

Jesus is our Irresistible Waymaker, our Light in the Darkness.  
He Chose the Nails, **Come and See!**

In April, we will begin a new teaching and preaching series, Come and See. Together, we come to see and experience the resurrection of Jesus through the book of Psalms.

Psalms is the original soundtrack of the Bible and within it lies the anatomy of the human soul. Dr. Michael Chan, Executive Director for faith and learning at Concordia College and Old Testament scholar, will lead us for Sunday's adult education hour. Invite a friend and connect with us. Visit our website to learn more...

## CONNECT

Whether you've been visiting FLC for a while, or this is your first time here, take the **NEXT STEPS** with us!

**Learn more about joining our community:**

# Belong! Session

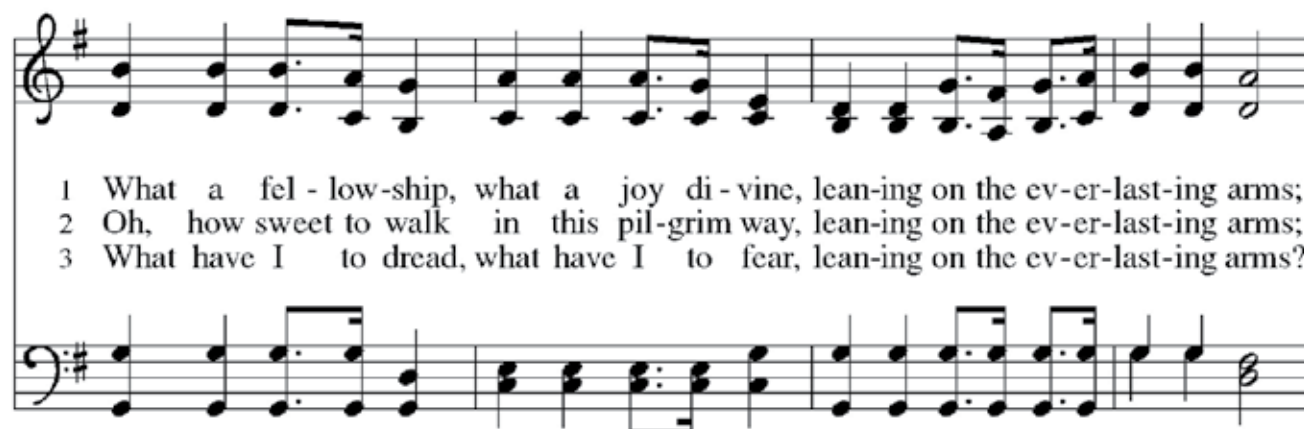
## Wednesday,

## May 22, 5:30 p.m.

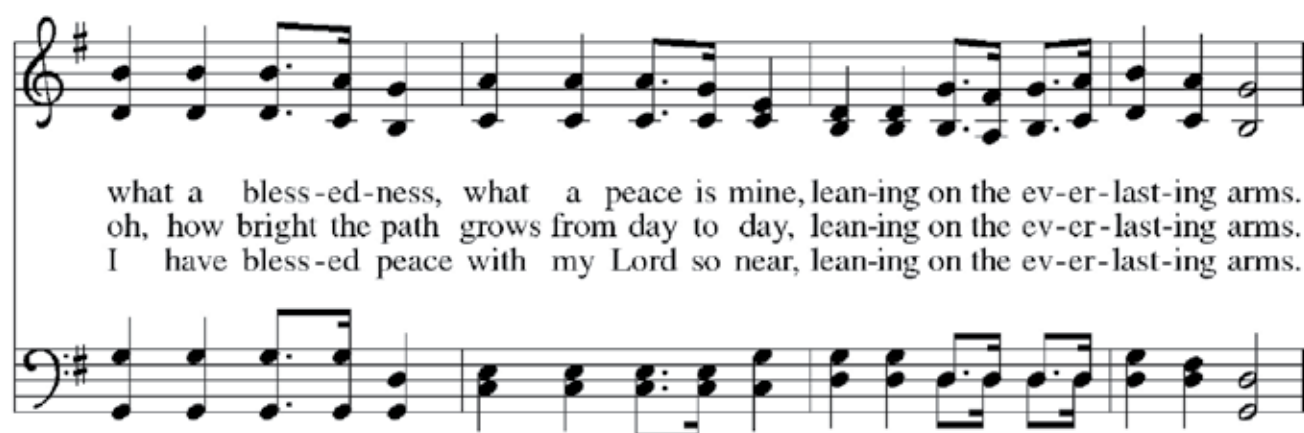
Registration required. Sign up today online (preferred) or visit the welcome desk!



## Worship in Sanctuary - Hymn: *Leaning on the Everlasting Arms*



1 What a fel - low-ship, what a joy di - vine, lean-ing on the ev-er-last-ing arms;  
2 Oh, how sweet to walk in this pil-grim way, lean-ing on the ev-er-last-ing arms;  
3 What have I to dread, what have I to fear, lean-ing on the ev-er-last-ing arms?



what a bless-ed-ness, what a peace is mine, lean-ing on the ev-er-last-ing arms.  
oh, how bright the path grows from day to day, lean-ing on the ev-er-last-ing arms.  
I have bless-ed peace with my Lord so near, lean-ing on the ev-er-last-ing arms.

*Refrain*



Lean - ing, lean - ing, safe and se-cure from all a - larms;  
Lean - ing on Je - sus, lean - ing on Je - sus,

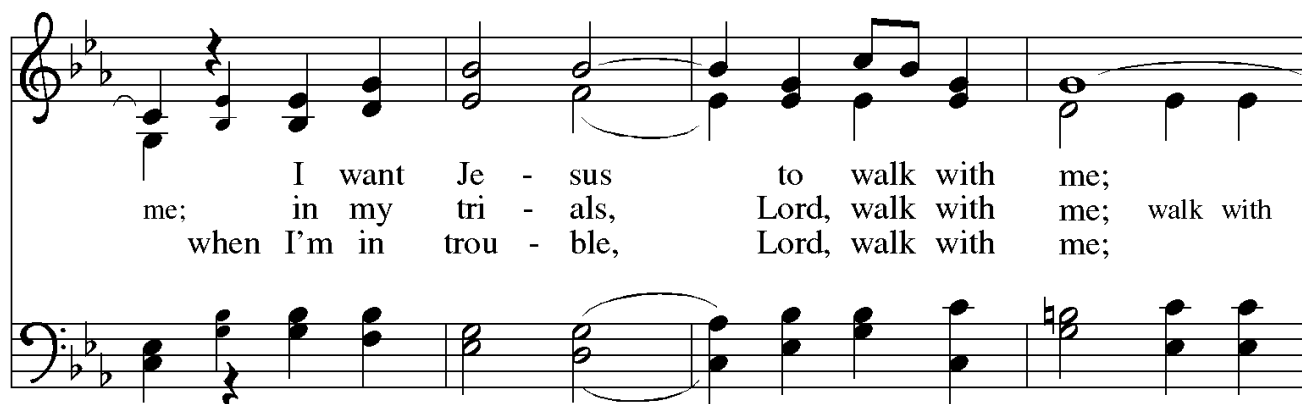


lean - ing, lean - ing, lean-ing on the ev - er - last-ing arms.  
lean - ing on Je - sus, lean - ing on Je - sus,

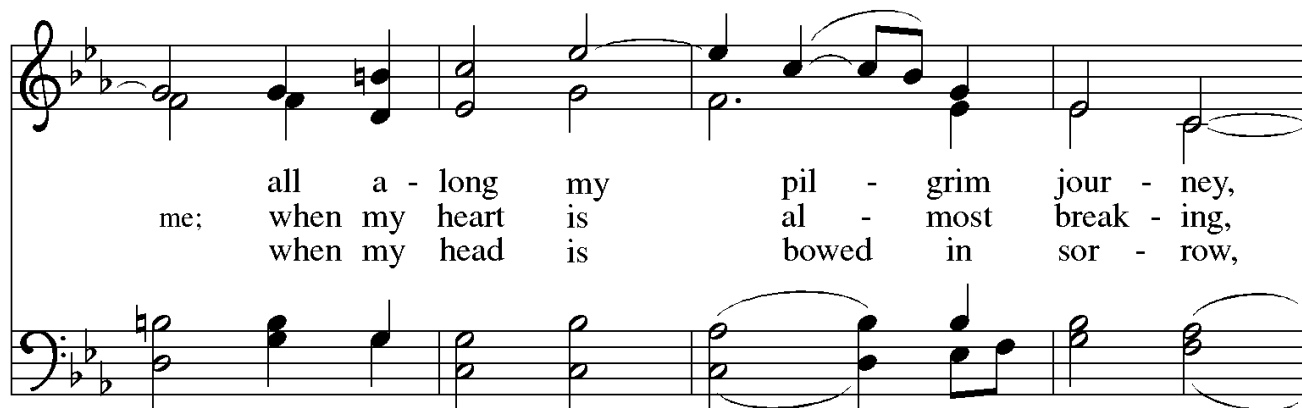
## Worship in Sanctuary - Hymn: *I Want Jesus to Walk With Me*



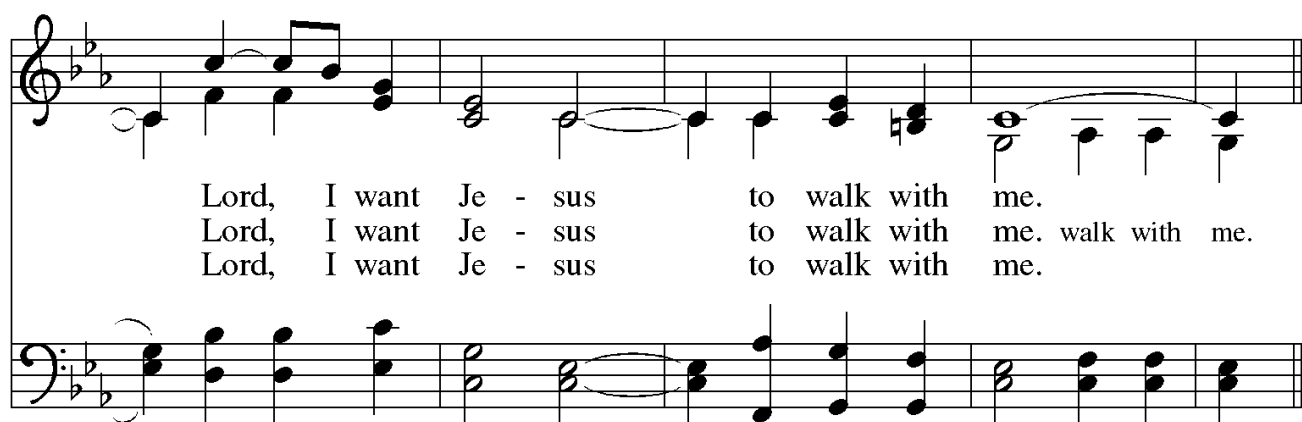
1 I want Je - sus to walk with me;  
2 In my tri - als, Lord, walk with me; walk with  
3 When I'm in trou - ble, Lord, walk with me;



me; I want Je - sus to walk with me;  
in my tri - als, Lord, walk with me; walk with  
when I'm in trou - ble, Lord, walk with me;



me; all a - long my pil - grim jour - ney,  
when my heart is al - most break - ing,  
when my head is bowed in sor - row,

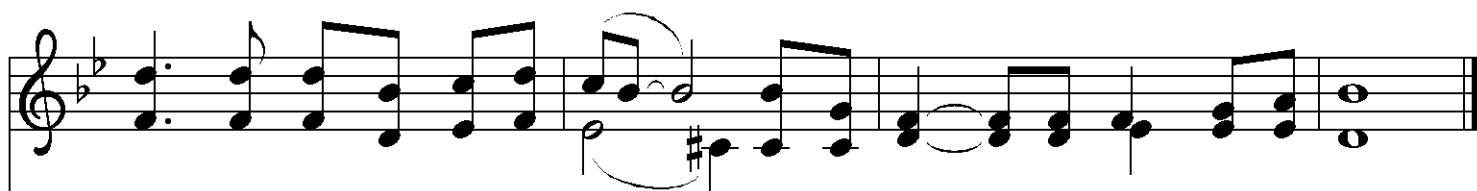


Lord, I want Je - sus to walk with me.  
Lord, I want Je - sus to walk with me. walk with me.  
Lord, I want Je - sus to walk with me.

**Worship in Sanctuary - Sending Hymn:** *Just a Closer Walk with Thee*



*Refrain* Just a clos - er walk with thee, grant it, Je - sus, is my plea;  
1 I am weak but thou art strong: Je - sus, keep me from all wrong;  
2 Through this world of toil and snares, if I fal - ter, Lord, who cares?  
3 When my fee - ble life is o'er, time for me will be no more;



dai - ly walk-ing close to thee, let it be, dear Lord, let it be.  
I'll be sat - is - fied as long as I walk, let me walk close to thee. *Ref.*  
Who with me my bur - den shares? None but thee, dear Lord, none but thee. *Ref.*  
guide me gent - ly, safe - ly o'er to thy king - dom shore, to thy shore. *Ref.*



FIRST LUTHERAN  
CHURCH