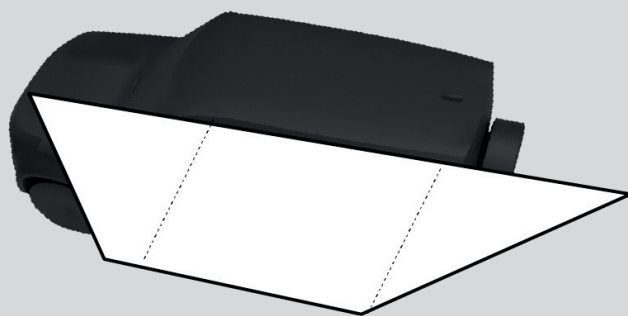


BUSHWAKKA

ADVENTURE GEAR

TRUE BLUE RANGE

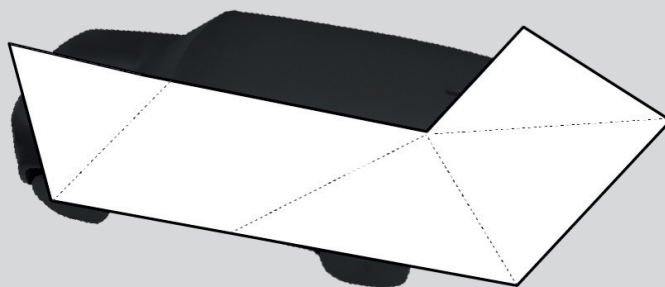
SET-UP & CARE INSTRUCTIONS



BUSHWAKKA
TRUE BLUE 180



BUSHWAKKA
TRUE BLUE 270



BUSHWAKKA
TRUE BLUE 270+

Please take a moment to review the instructions before using the Awning from our TrueBlue Range for the first time.

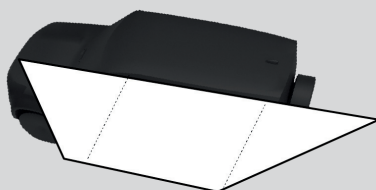
If you need further support, please reach out to your local Bushwakka retailer or contact Bushwakka HQ directly on (07) 5515 7912.



It's crucial to familiarise yourself with your awning.

We recommend you check all parts are included prior to first use.

Our Range



BUSHWAKKA
TRUE BLUE 180

TrueBlue 180

CONTENT

- 1x TrueBlue 180
- 2x Quick Release Ratchet Rope
- 2x Heavy Duty Adjustable T-Brackets
- 4x Pegs
- 4x Guy Ropes
- 8x M8 Bolt & Nuts

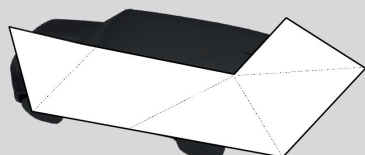


BUSHWAKKA
TRUE BLUE 270

TrueBlue 270

CONTENT

- 1x TrueBlue 270
- 1x Quick Release Ratchet Rope
- 2x Heavy Duty Adjustable T-Brackets
- 4x Pegs
- 4x Guy Ropes
- 8x M8 Bolt & Nuts



BUSHWAKKA
TRUE BLUE 270+

TrueBlue 270+

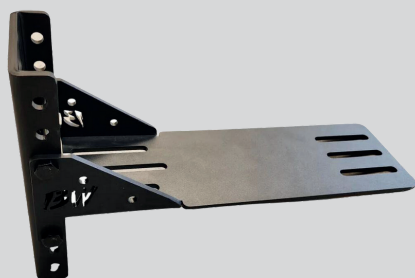
CONTENT

- 1x TrueBlue 270+
- 2x Quick Release Ratchet Rope
- 2x Heavy Duty Adjustable T-Brackets
- 4x Pegs
- 4x Guy Ropes
- 8x M8 Bolt & Nuts

Bushwakka Brackets

Included with the Awning

Heavy Duty Adjustable T-Bracket



Alternative Additional Mounting Options (***sold separately***)

Standard L-Bracket

*requires rust prevention treatment



Rooftop Tent Bracket



Bushwakka Adventure Gear recommend utilising the services of an experienced 4x4 Accessories fitter to mount the Awning to your vehicle. Bolts, Nuts and fixings should be regularly checked on both the awning and roof attachment system (*Rails, Racks or Platform*) before any major trips to ensure the awning is always mounted securely to your vehicle.



Ensure the unsupported ends of the awning do not exceed 150mm.



Bushwakka Adventure Gear accept no responsibility for the fitment of the Extreme Range Awning to any vehicle or roof rack system.

Installation Guide



STEP 1



STEP 2



STEPS:

1. Carefully cut open your box and check that all the contents are there.
2. Firstly, you want to mount your brackets to crossbars/platform. Allow no more than 150mm from the back bracket for overhang. Minimum mounting space between brackets for the Extreme Range is 1500mm (*non-negotiable*).
3. Once your brackets are mounted, whilst your awning is on the ground get the bolts ready, 1 bolt per channel (*T-slot*).
4. Slide bolts into each channel (*T-slot*) on the backing plate matching the distance between the bolts to the distance between the bracket holes.
5. You are now ready to lift your awning into place, you will need a mate to help you lift the awning and hold the awning in place.
6. The bolts should slide straight into the bracket slots. Install nuts on the top bolts and tighten. This will allow you to have free hands to tighten the rest of your bolts.
7. Tighten all your bolts to no greater than 20 newton meters and your awning is ready to go!

STEP 3



STEP 4



EXTENSIVE TRAVEL ON UNEVEN ROUGH OR CORRUGATED TERRAIN WILL REQUIRE MORE FREQUENT INSPECTIONS.



BUSHWAKKA BRACKETS HAVE BEEN DESIGNED AND TESTED EXTENSIVELY TO ENSURE THE CORRECT OPERATIONS AND FITMENT TO THE VEHICLE ARE MET. OUR BRACKET HAS BEEN ENGINEERED TO FIT MOST ROOF RACK SYSTEMS, BUT AS COMPANIES ALTER THEIR DESIGNS WE CANNOT PROMISE WE CAN ACCOMMODATE ALL REQUIREMENTS.

STEP 5



STEP 6



THE USE OF UNAUTHORISED THIRD PARTY MOUNTING BRACKETS MAY RESULT IN DAMAGE TO THE AWNING ITSELF, PERSONAL, VEHICLE OR PROPERTY WHICH IS NOT COVERED UNDER WARRANTY.



ENSURING YOU TREAT YOUR BRACKETS WITH AN ANTI-RUST/LANOLIN SPRAY WILL ALLOW FOR BETTER LONGEVITY OF YOUR BRACKETS. RUST & DECAY WILL BE EVIDENT OVERTIME.

STEP 7



STEP 8



Cross Bar Systems

Rhino Rack - Vortex/Heavy Duty Bars, Yakima Cross Bars & others
Our Bushwakka Standard L-Brackets & Heavy Duty Adjustable T-Brackets are suitable.
Requirements for Install:
4x M8 Channel Nuts or 4x M8 T-bolts (some brands may require brand specific fitment accessories).

Platform Systems

Rhino Rack Pioneer, Rola Titan Tray, Yakima Lock N Load Platform
Our Bushwakka Standard L-Brackets & Heavy Duty Adjustable T-Brackets are suitable.
Requirements for Install:
4x M8 Channel Nuts or 4x M8 T-bolts (some brands may require brand specific fitment accessories).

ARB Base Rack

Our Bushwakka Standard L-Brackets & Heavy Duty Adjustable T-Brackets are suitable.
Requirements for Install:
ARB Base Rack T-Slot Adaptors or KAON Awning Brackets (suitable for ARB Base Rack).

Front Runner

Our Bushwakka Standard L-Brackets & Heavy Duty Adjustable T-Brackets are suitable.
Requirements for Install:
Front Runner Universal Awning Brackets or Spacers to bring the bracket level with the edge of the rail (50mm/2") then our Bushwakka Brackets will work.



Operating your FREESTANDING Awning

SET UP YOUR TRUEBLUE RANGE AWNING

- **UNZIP YOUR TONNEAU BAG:** unzip the Tonneau Bag ensuring the zips are taken all the way to the top of each side. Once unzipped correctly open and fold the bag over the top of the awning and invert the edges to ensure there is no pinch point for damage to occur to the bag.
- **UNSTRAP THE AWNING CANVAS:** Release the respective velcro straps holding the canvas. Allow the canvas to fall into position.
- **OPENING THE AWNING:**
 - **TrueBlue 270**
 - Once velcro straps are released, attach your (1) Quick Release Rope Ratchet to the tension eyelet and secure to your roof rack system tensioning the awning canvas so it is tight and taut.
 - **TrueBlue 180 & TrueBlue 270+**
 - Once velcro straps are released, attach a Quick Release Rope Ratchets to the tension eyelet and secure to your roof rack system. Note: DO NOT TIGHTLY TENSION YET. Now attach another Quick Release Rope Ratchet to the other tension eyelet and secure to your roof rack system. You can now evenly tension the awning ensuring the canvas is tight and taut.
- **DROP THE LEG/S INTO POSITION (*not required for operation of the Awning*):** ALL Bushwakka Adventure Gear awnings are **100% FREESTANDING**. But for additional support and stability you can undo the velcro retention of the leg/s and drop and twist to secure into position. Use the included guy ropes and pegs to secure each leg where applicable. Recommendation: third-party sand pegs or drill in pegs are found to be more suitable for the Australian environment.
- **EXTREME & ADVERSE WEATHER CONDITIONS:** On your TrueBlue awning EVERY Arm has a tie-down eyelet and between each section of canvas there are rain tabs. Ensure the use of these tie-down points during extreme weather.



ALWAYS TENSION YOUR AWNING ON A LEVEL PLANE. NEVER TENSION DOWNWARDS OR TO A BULLBAR AS THIS MAY HAVE NEGATIVE EFFECTS ON THE ARMS SHAPE AND INTEGRITY.



Operating your FREESTANDING Awning

PACK UP YOUR TRUEBLUE RANGE AWNING

- **REMOVE GUY ROPES & PEGS (if applicable):** Undo all guy ropes, remove all pegs prior to pack up.
- **SECURE LEGS (if applicable):** Untwist the leg/s that have been used and return to their arm fitment.
- **CLOSE THE AWNING:**
 - **TrueBlue 270**
 - De-tension your Quick Release Rope Ratchet and detach from the fixed point on your roof rack system and using the Quick Release Rope Ratchet to walk the awning and canvas around. Once you are able to secure the arms, detach the Quick Release Rope Ratchet and begin securing the canvas. Note: Store your Quick Release Rope Ratchet in the accessory bag for ease of location.
 - **TrueBlue 180 & TrueBlue 270+**
 - De-tension your Quick Release Rope Ratchet that secures the rear section of your awning, detach it from the fixed point on your roof rack system and walking the arms and canvas around. When you reach the centre place the canvas over the top of the arms and secure the arms (ensuring you place the canvas over the first set of arms is imperative to the canvas being stored correctly). You can now de-tension the front section of your awning, detaching it from the fixed point on your roof rack system and walk the arm and canvas around over the already secured arms. You can then secure the canvas.
- **SECURING THE CANVAS:** Once the arms are secured correctly, you can roll/fold the canvas ensuring you bring the canvas up onto/against the framework securing the arms in place (*to mitigate rubbing during transport*). Failure to secure the canvas correctly can result in rubbing & pinching of the canvas that can result in holes or wear marks. Closure videos are available for additional support on our Youtube Channel.
- **CLOSING & ZIPPING THE TONNEAU BAG:** Unfold the bag corners and fold the bag back over. When securing the zips at one end, do not force the bag to zip. If the canvas is not folded correctly you will struggle to zip the bag (*failure to refold the canvas and damage the zip is not covered under warranty*).
- **DRY STORAGE IS IDEAL:** Ensuring the Awning is packed away and stored dry will maximise best user experience. But, the weather doesn't always play in our favour. If you pack your awning away wet/damp/dirty please ensure once you are able to do so (*at least within 48hrs*) reopen your awning and allow it to dry. Ensure you are cleaning off any debris during this process.

You 





SAFETY INFORMATIONAL

DISCLAIMER:

NEVER LEAVE YOUR AWNING UNATTENDED WITHOUT SECURING IT APPROPRIATELY TO PREVENT DAMAGE FROM WEATHER, WIND, GUSTING & UNEXPECTED EVENTS.

LEAVING THE AWNING UNATTENDED:

IF YOU ARE WISHING TO LEAVE YOUR AWNING ERECTED ENSURE IT HAS BEEN SECURED VIA THE TIE-DOWN POINTS AT THE END OF EACH ARM OF THE AWNING.

- Bushwakka Adventure Gear recommend utilising the services of an experienced 4x4 Accessories fitter to mount the Awning to your vehicle.
- Bolts, Nuts and fixings should be regularly checked on both the awning and roof attachment system (*Rails, Racks or Platform*) before any major trips to ensure the awning is always mounted securely to your vehicle.
- Ensure children are under supervision around the awning at all times to prevent injury, minor or major damage to the awning.
- Ensure all naked flames and external heat sources (*campfires & gas heaters etc*) are to be kept away from the awning at all times.
- If a naked flame or external heat sources is evident ensure the burning embers or airborne matter does not come in contact with the awning. Ensure you have appropriate fire suppression equipment available (*inclusive of water*).
- Always be aware of your surroundings when activating the leg/s, guy-ropes and rain tabs to prevent personal injury.

TrueBlue Range awning care

- **CLEANING:** Using warm water and a damp cloth you can wipe down your canvas and metal areas to ensure upkeep is maintained. Do not use any soaps or hard chemicals that may cause damage, corrosion or rust.
- **STORAGE:** The longevity of your TrueBlue Range awning is determined by the correct pack up procedure and standards being met. The awning must be packed up clean & dry. If the awning is ever packed away wet/damp or dirty you must ensure you re-open the awning to clean and dry. Incorrect storage of the awning will result in the warranty being null and void.
- **WEATHER:** Bushwakka Adventure Gear prides itself in our entire range of awnings being **100% FREESTANDING**. Calm conditions are ideal for the appropriate operations of the awning. Ensuring the tie-downs, guy ropes, leg/s & rain tabs are utilised accordingly to limit the potential of physical and personal injury or damage incurred to a vehicle or property. Damage caused to the awning itself, persons, vehicle or property due to the awning being operated in adverse weather, windy, stormy conditions will not be covered under warranty.
- **GUY ROPES & PEGS:** When using guy ropes & pegs, ensure they are embedded into the ground with the appropriate style peg (*alternative types of pegs may be required*). Securement to pegs should be checked regularly and prior to leaving the awning unattended.
- **ULTRA VIOLET (UV) & WATER:** Our entire range of awnings are UV50+ and water proof. Water ingress may be evident from time to time generally along stitching. To mitigate this, use a waterproofing spray to seal the affected zone/s. General wear & tear will also reduce the longevity of the water proof state of the canvas.



IN WINDY CONDITIONS WE DO NOT RECOMMEND THE USE OF YOUR AWNING & WALLS (WALLS ARE PRIMARILY TO PROVIDE REDUCED DUST AND DEBRIS INGRESS AND SHADE). AS PERSONAL INJURY, VEHICLE OR PROPERTY DAMAGE MAY OCCUR.