



SPECIALISED FORCE

Quality Products, Service and Solutions for 700Bar Hydraulic, Electrical, Rail & Other Key Industries.

TANGYE

Hydraulic Jacks & Back-up Pump



specialisedforce.com.au



HYDRACLAW HYDRAULIC 5 TONNE MINING JACK

OVERVIEW

The HYDRACLAW series jack is Tangye's only all-steel jack. Its robust, ferrous construction allows it to withstand rough treatment, making it ideal for mining engineers performing heavy lifts in confined working spaces and leading to its extensive use underground. Reliability is enhanced by totally enclosed jack hydraulics, while safety is increased through a positive stop feature that prevents overstroking and a pressure relief valve that prevents overloading. A substantial base provides excellent stability under load.

FEATURES

- 5-tonne lifting capacity
- All-steel (ferrous) construction
- High lift: 178 mm
- Low clearance: 41 mm
- Fast operation: 5.5 mm per stroke
- Horizontal or vertical operation

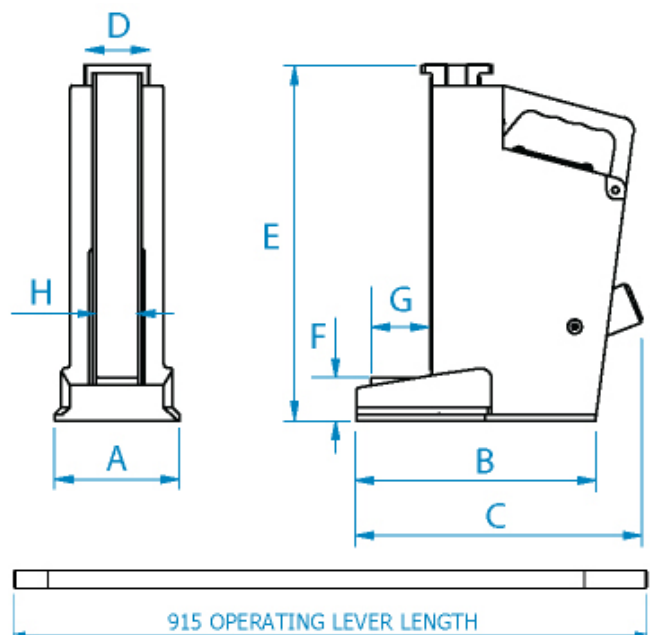
SPECIFICATIONS

Model No.	9501W
Ram Capacity (Tonne)	5 Tonne
Oil Capacity (L)	0.68 Litres
Weight of Jack (kg)	18 kg
Weight of Lever (kg)	3.63 kg
Working Pressure Bar (PSI)	618 (8963)
Maximum Effort on Lever (kg)	45 kg
Stroke - mm (ins)	178 (7)
Lift per Stroke - mm (ins)	5.5 (0.21)
Service Kit Number	995125



DIMENSIONS

Dimensions mm (ins)	
A - Width	114 (4.5)
B - Centre Ram to Face	220 (8.7)
C - Overall Length	260 (10.2)
D - Ram Width	57 (2.2)
E - Height	325 (12.8)
F - Claw Height	41 (1.6)
G - Claw Depth	52 (2)
H - Closed Height	38 (1.5)



HYDRAMITE HYDRAULIC 6.5, 10 & 15 TONNE JACKS



OVERVIEW

The HYDRAMITE Series jacks are ideal portable tools for lifting heavy loads, offering powerful capacities of 6.5 tonne, 10 tonne, and 15 tonne. Proven in thousands of applications worldwide, they are well engineered for easy servicing and repair. Safety is enhanced with a built-in relief valve that prevents overloading. Compact and lightweight in design, these jacks are highly versatile, operating in any orientation and fully enclosed for use in dusty conditions. Smooth lifting and lowering are controlled by a simple operating lever, and the jacks are available with plane, swivel, or ball interfaces.

FEATURES

- 6.5–15 tonne capacity
- Compact & lightweight
- Overload protection valve
- All-position operation
- Dust-sealed design

SPECIFICATIONS

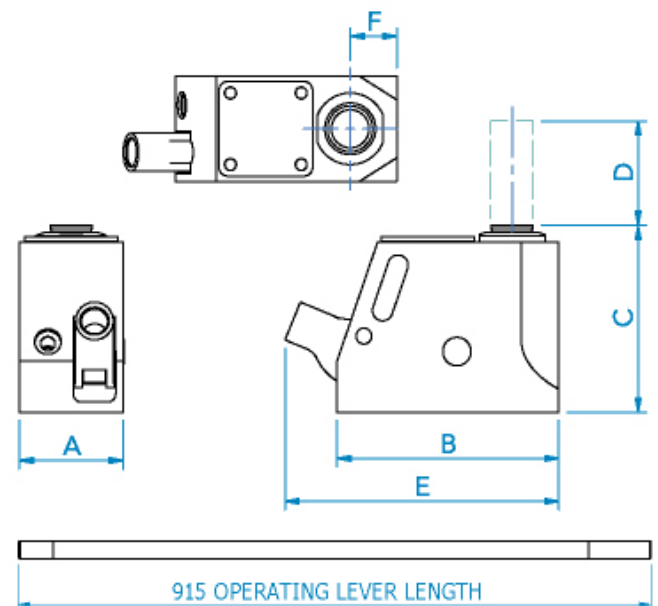
Model No.	8104H	1105002	1105003
Capacity (Tonne)	6.5	10	15
Oil Capacity (L)	0.1	0.13	0.27
Weight (kg)	3.6	6.3	10
Service Kit Number	995052	995053	995054



HYDRAULIC JACKS

DIMENSIONS

Dimensions mm (ins)			
A - Base Width	76 (2.99)	76 (2.99)	92 (3.62)
B - Base Depth	158 (6.22)	171 (6.73)	197 (7.75)
C - Closed Height	140 (5.51)	182 (7.17)	230 (9.06)
D - Stroke	75 (2.95)	115 (4.5)	152 (5.98)
E - Max Depth	190 (7.48)	207 (8.15)	236 (9.29)
F - Centre Ram to Face	33.3 (1.31)	40 (1.57)	48 (1.89)
Ram Diameter	30 (1.18)	38 (1.5)	47.5 (1.87)



specialisedforce.com.au



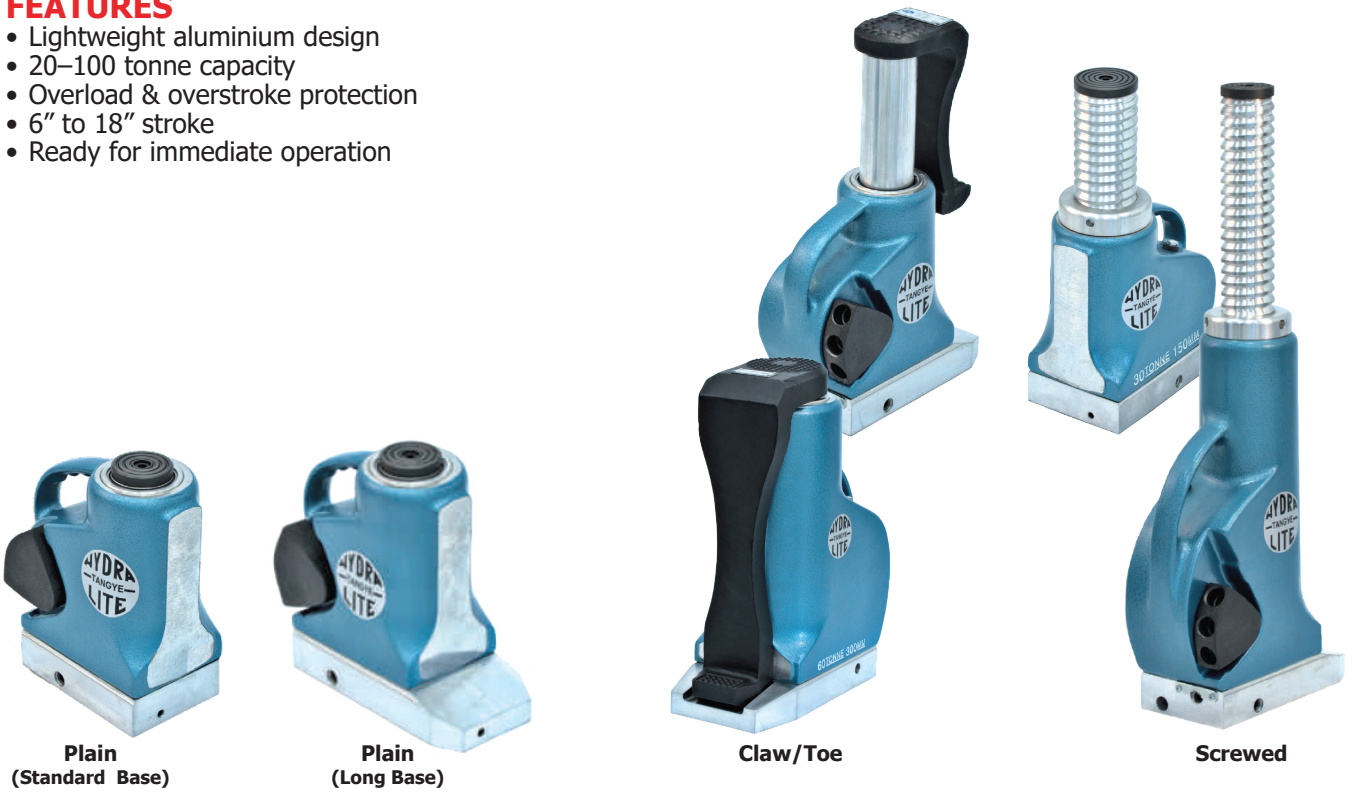
HYDRALITE PS-SERIES HYDRAULIC JACKS

OVERVIEW

The HYDRALITE PS-series is a range of lightweight jacks designed to lift, lower, manoeuvre, and position heavy loads with maximum safety. Designed with portability in mind, extensive use of high-strength aluminium alloys minimises jack weight while maintaining strength. Renowned worldwide for reliability, Hydralite's long service life makes it the preferred choice for many rental operations. All moving parts are totally enclosed and lubricated by hydraulic oil, while seals are highly resistant to deterioration across a wide range of climatic conditions. Built with safety as a priority, the jacks feature overload and overstroke protection: a high-pressure relief valve prevents lifting excessive loads, and a fail-safe positive stop mechanism vents oil to the reservoir when the stroke limit is reached. For sustained loads, screwed ram models are recommended. Full capacity can be achieved by a single operator using a short, lightweight lever that requires minimal operating space. Easy and versatile operation is provided via a hexagon key in the operating lever, with most models offering three lever positions for optimal working height. The jacks can be used vertically or horizontally due to a carefully positioned breather. Low-clearance claw models are available, and a wide range of capacities from 20 to 100 tonne is offered, with stroke options from 6" to 18" and a choice of plain, claw, or screwed rams. Designed for easy maintenance, inspection and component replacement are straightforward, and unlike pump-and-cylinder systems, Hydralite jacks are immediately ready for use.

FEATURES

- Lightweight aluminium design
- 20–100 tonne capacity
- Overload & overstroke protection
- 6" to 18" stroke
- Ready for immediate operation



**Plain
(Standard Base)**

**Plain
(Long Base)**

Claw/Toe

Screwed

Type	Plain			Claw/Toe			Screwed			
Base	Standard	Optional Long	Long	Long			Standard	Long		
Stroke (Inches)		6	12	18	6	12	18	6	12	18
Stroke (mm)		152	305	457	152	305	457	152	305	457
Load (Tonnes)	20	PS620	PS620C1	PS1220L		PS620C	PS1220C	*PS620S	PS1220S	
	30	PS630	PS630C1	PS1230L		PS630C	PS1230C	*PS630S	PS1230S	
	40				PS1840L			PS1840C		PS1840S
	60	PS660	PS660C1	PS1260L		PS660C	PS1260C	*PS660S	PS1260S	
	72									
	100	*P6100						*P6100S		
Claw Load (Tonnes)	8					PS620C	PS1220C			
	12					PS630C	PS1230C			
	16							PS1840C		
	24					PS660C	PS1260C			

* Long base option is not available.

HYDRALITE PS-SERIES 6" 20, 30 & 60 TONNE HYDRAULIC JACKS 

SPECIFICATIONS 6" PLAIN

Product Code	PS620	PS630	PS660
Ram Capacity (Tonne)	20	30	60
Oil Capacity (L)	0.64	0.88	1.71
Stroke - mm (ins)	152 (6)	152 (6)	152 (6)
Lift per Stroke - mm (ins)	1.1 (0.042)	0.7 (0.026)	0.3 (0.013)
Weight (kg)	10.9	15.4	27.4
Working Pressure Bar (PSI)	682 (9,900)	644 (9,350)	644 (9,350)
Maximum Effort on Lever (kg)	54	52	52
Service Kit Number	133506	133511	133518
Dimensions mm (ins)			
A - Width	121 (4.75)	140 (5.5)	190 (7.5)
B - Centre Ram to Face	60 (2.38)	70 (2.75)	92 (3.625)
C - Base Length	178 (7)	197 (7.75)	251 (9.875)
D - Overall Depth	214 (8.44)	235 (9.25)	286 (11.25)
F - Ram Diameter	60 (2.38)	76 (3)	108 (4.25)
H - Closed Height	263 (10.35)	263 (10.35)	293 (11.562)

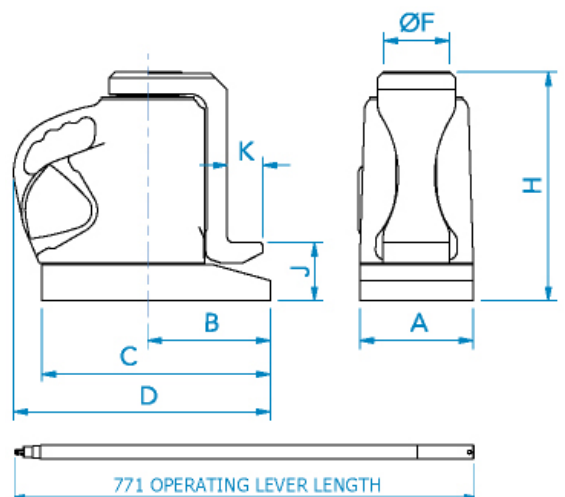
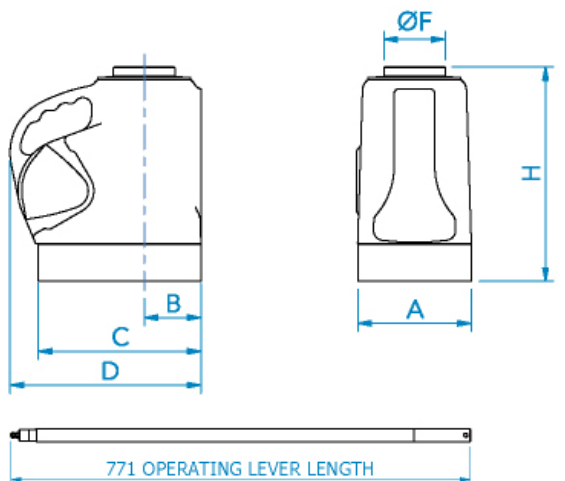
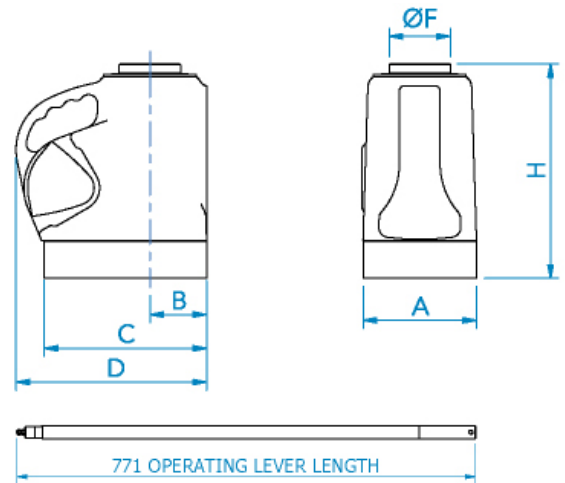
To order the long base, add the suffix "C1" to the end of the model number.

SPECIFICATIONS 6" SCREWED

Product Code	PS620S	PS630S	PS660S
Ram Capacity (Tonne)	20	30	60
Oil Capacity (L)	0.64	0.88	1.71
Stroke - mm (ins)	152 (6)	152 (6)	152 (6)
Lift per Stroke - mm (ins)	1.1 (0.042)	0.7 (0.026)	0.3 (0.013)
Weight (kg)	10.9	15.4	27.4
Working Pressure Bar (PSI)	682 (9,900)	644 (9,350)	644 (9,350)
Maximum Effort on Lever (kg)	54	52	52
Service Kit Number	133930	133932	133935
Dimensions mm (ins)			
A - Width	121 (4.75)	140 (5.5)	190 (7.5)
B - Centre Ram to Face	60 (2.38)	70 (2.75)	92 (3.625)
C - Base Length	178 (7)	197 (7.75)	251 (9.875)
D - Overall Depth	214 (8.44)	235 (9.25)	286 (11.25)
F - Ram Diameter	60 (2.38)	76 (3)	108 (4.25)
H - Closed Height	263 (10.35)	263 (10.35)	293 (11.562)

SPECIFICATIONS 6" CLAW/TOE

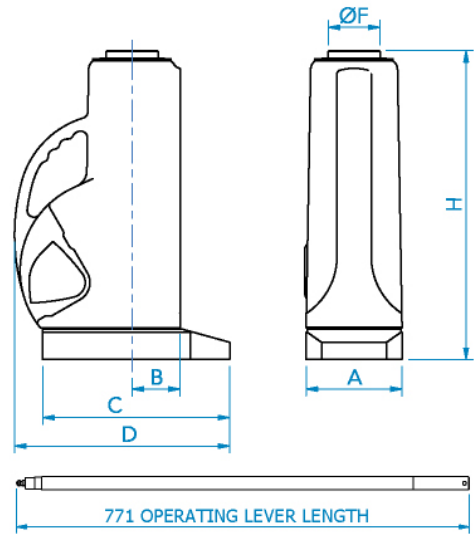
Product Code	PS620C	PS630C	PS660C
Ram Capacity (Tonne)	20	30	60
Claw Capacity (Tonne)	8	12	24
Oil Capacity (L)	0.64	0.88	1.71
Stroke - mm (ins)	152 (6)	152 (6)	152 (6)
Lift per Stroke - mm (ins)	1.1 (0.042)	0.7 (0.026)	0.3 (0.013)
Weight of Jack (kg)	10.9	15.4	27.4
Weight of Claw	3.6	4.9	15.7
Working Pressure Bar (PSI)	682 (9,900)	644 (9,350)	644 (9,350)
Maximum Effort on Lever (kg)	54	52	52
Service Kit Number	13350	133511	133518
Dimensions mm (ins)			
A - Width	121 (4.75)	140 (5.5)	190 (7.5)
B - Centre Ram to Face	60 (2.38)	70 (2.75)	92 (3.625)
C - Base Length	178 (7)	197 (7.75)	251 (9.875)
D - Overall Depth	214 (8.44)	235 (9.25)	286 (11.25)
F - Ram Diameter	60 (2.38)	76 (3)	108 (4.25)
H - Closed Height	263 (10.35)	263 (10.35)	293 (11.562)
J - Base to Claw	67 (2.63)	73 (2.875)	73 (2.875)
K - Claw Depth	41 (1.61)	45 (1.77)	48 (1.89)



HYDRALITE PS-SERIES 12" 20, 30 & 60 TONNE HYDRAULIC JACKS 

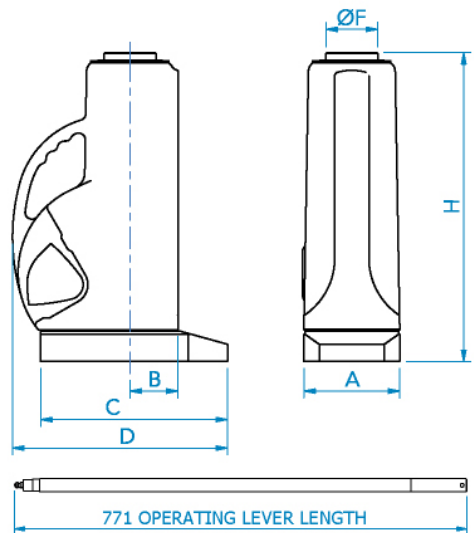
SPECIFICATIONS 12" PLAIN

Product Code	PS1220L	PS1230L	PS1260L
Ram Capacity (Tonne)	20	30	60
Oil Capacity (L)	1.14	1.71	2.84
Stroke - mm (ins)	305 (12)	305 (12)	305 (12)
Lift per Stroke - mm (ins)	1.1 (0.042)	0.7 (0.026)	0.3 (0.013)
Weight (kg)	16.7	23.4	43.7
Working Pressure Bar (PSI)	682 (9,900)	644 (9,350)	644 (9,350)
Maximum Effort on Lever (kg)	54	52	52
Service Kit Number	133506	133511	133518
Dimensions mm (ins)			
A - Width	121 (4.75)	140 (5.5)	190 (7.5)
B - Centre Ram to Face	60 (2.38)	70 (2.75)	92 (3.625)
C - Base Length	246 (9.69)	273 (10.75)	339 (13.375)
D - Overall Depth	289 (11.38)	311 (12.25)	384 (15.375)
F - Ram Diameter	60 (2.38)	76 (3)	108 (4.25)
H - Closed Height	438 (17.25)	451 (17.75)	500 (19.687)



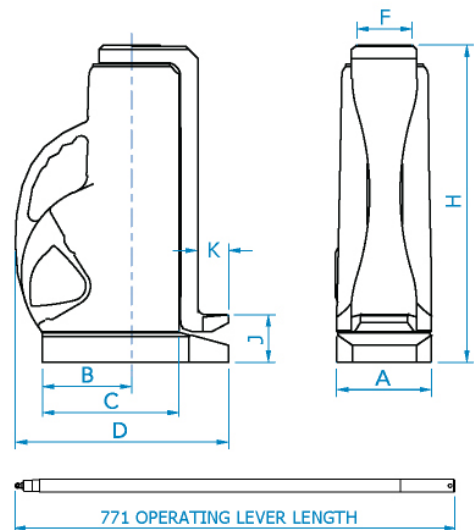
SPECIFICATIONS 12" SCREWED

Product Code	PS1220S	PS1230S	PS1260S
Ram Capacity (Tonne)	20	30	60
Oil Capacity (L)	1.14	1.71	2.84
Stroke - mm (ins)	305 (12)	305 (12)	305 (12)
Lift per Stroke - mm (ins)	1.1 (0.042)	0.7 (0.026)	0.3 (0.013)
Weight (kg)	16.7	23.4	43.7
Working Pressure Bar (PSI)	682 (9,900)	644 (9,350)	644 (9,350)
Maximum Effort on Lever (kg)	54	52	52
Service Kit Number	133930	133932	133935
Dimensions mm (ins)			
A - Width	121 (4.75)	140 (5.5)	190 (7.5)
B - Centre Ram to Face	60 (2.38)	70 (2.75)	92 (3.625)
C - Base Length	246 (9.69)	273 (10.75)	339 (13.375)
D - Overall Depth	289 (11.38)	311 (12.25)	384 (15.375)
F - Ram Diameter	60 (2.38)	76 (3)	108 (4.25)
H - Closed Height	438 (17.25)	451 (17.75)	500 (19.687)



SPECIFICATIONS 12" CLAW/TOE

Product Code	PS1220C	PS1230C	PS1260C
Ram Capacity (Tonne)	20	30	60
Claw Capacity (Tonne)	8	12	24
Oil Capacity (L)	1.14	1.71	2.84
Stroke - mm (ins)	305 (12)	305 (12)	305 (12)
Lift per Stroke - mm (ins)	1.1 (0.042)	0.7 (0.026)	0.3 (0.013)
Weight of Jack (kg)	16.7	23.4	43.7
Weight of Claw	5.5	7.6	21.2
Working Pressure Bar (PSI)	682 (9,900)	644 (9,350)	644 (9,350)
Maximum Effort on Lever (kg)	54	52	52
Service Kit Number	13350	133511	133518
Dimensions mm (ins)			
A - Width	121 (4.75)	140 (5.5)	190 (7.5)
B - Centre Ram to Face	125 (4.94)	143 (5.625)	181 (7.125)
C - Base Length	246 (9.69)	273 (10.75)	339 (13.375)
D - Overall Depth	289 (11.38)	311 (12.25)	384 (15.375)
F - Ram Diameter	60 (2.38)	76 (3)	108 (4.25)
H - Closed Height	452 (17.88)	470 (18.5)	533 (21)
J - Base to Claw	67 (2.63)	73 (2.875)	73 (2.875)
K - Claw Depth	41 (1.61)	45 (1.77)	48 (1.89)

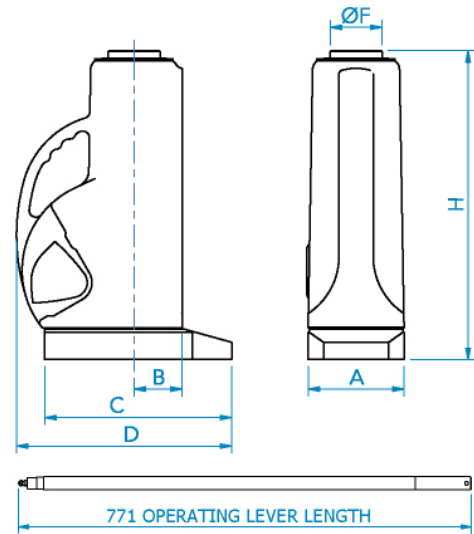


HYDRALITE PS-SERIES 18" 40 TONNE HYDRAULIC JACKS



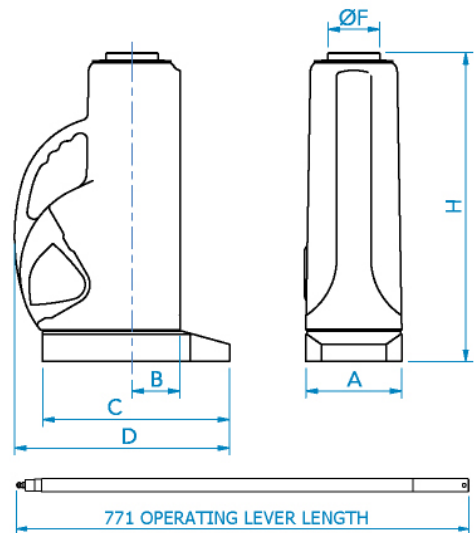
SPECIFICATIONS 18" PLAIN

Product Code	PS1840L
Ram Capacity (Tonne)	40
Oil Capacity (L)	3.7
Stroke - mm (ins)	457 (18)
Lift per Stroke - mm (ins)	0.5 (0.02)
Weight (kg)	47.7
Working Pressure Bar (PSI)	632 (9166)
Maximum Effort on Lever (kg)	50
Service Kit Number	133529
Dimensions mm (ins)	
A - Width	190 (7.5)
B - Centre Ram to Face	79 (3.1)
C - Base Length	324 (12.8)
D - Overall Depth	378 (14.9)
F - Ram Diameter	89 (3.5)
H - Closed Height	686 (27)



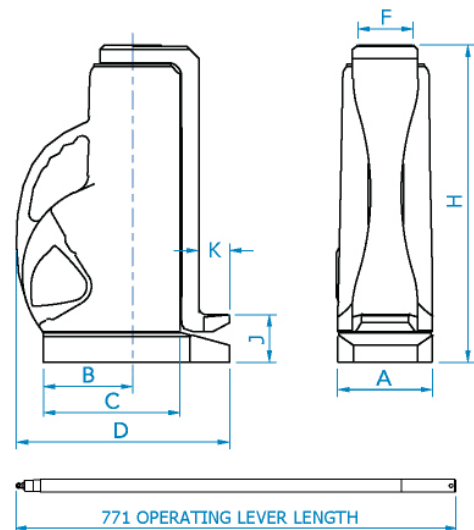
SPECIFICATIONS 18" SCREWED

Product Code	PS1840S
Ram Capacity (Tonne)	40
Oil Capacity (L)	3.7s
Stroke - mm (ins)	457 (18)
Lift per Stroke - mm (ins)	0.5 (0.02)
Weight (kg)	47.7
Working Pressure Bar (PSI)	632 (9166)
Maximum Effort on Lever (kg)	50
Service Kit Number	133934
Dimensions mm (ins)	
A - Width	190 (7.5)
B - Centre Ram to Face	79 (3.1)
C - Base Length	324 (12.8)
D - Overall Depth	378 (14.9)
F - Ram Diameter	89 (3.5)
H - Closed Height	686 (27)



SPECIFICATIONS 18" CLAW/TOE

Product Code	PS1840C
Ram Capacity (Tonne)	40
Claw Capacity (Tonne)	16
Oil Capacity (L)	3.7s
Stroke - mm (ins)	457 (18)
Lift per Stroke - mm (ins)	0.5 (0.02)
Weight of Jack (kg)	47.7
Weight of Claw	16.2
Working Pressure Bar (PSI)	632 (9166)
Maximum Effort on Lever (kg)	50
Service Kit Number	133529
Dimensions mm (ins)	
A - Width	190 (7.5)
B - Centre Ram to Face	79 (3.1)
C - Base Length	324 (12.8)
D - Overall Depth	378 (14.9)
F - Ram Diameter	89 (3.5)
H - Closed Height	711 (28)
J - Base to Claw	63 (2.5)
K - Claw Depth	48 (1.9)





HYDRALITE PS-SERIES 6" 100 TONNE HYDRAULIC JACK

OVERVIEW

The HYDRALITE P-Series 100-tonne jack is powered by two internal pumps. A low-pressure, high-speed plunger extends the ram rapidly up to an initial load of approximately 8 tonnes, after which the system automatically transfers to the high-pressure plunger. This two-stage operation ensures fast approach and precise, controlled lifting under heavy loads. The ram lift per lever stroke is 1.1 mm in low-pressure mode and 0.1 mm in high-pressure mode, providing both speed and accuracy.

FEATURES

- 100-tonne lifting capacity
- Dual internal pump system
- Automatic pressure transfer
- Fast approach & fine control
- Precision hydraulic operation

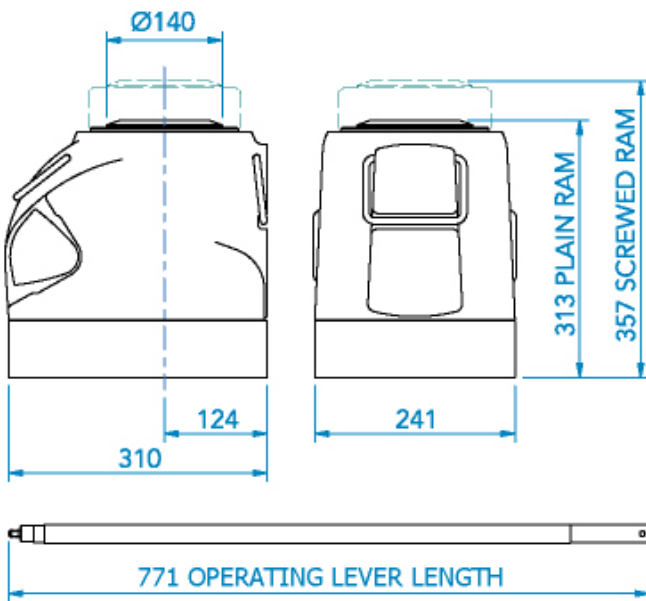
SPECIFICATIONS

Model No.	P6100 (Plain)	P6100S (Screwed)
Ram Capacity (Tonne)	100	100
Oil Capacity (L)	2.23	2.3
Stroke - mm (ins)	152 (6)	152 (6)
Lift per Stroke High - mm (ins)	0.1 (0.005)	0.1 (0.005)
Lift per Stroke Low - mm (ins)	1.1 (0.043)	1.1 (0.043)
Weight (kg)	49	53
Working Pressure Bar (PSI)	640 (9280)	640 (9280)
Maximum Effort on Lever (kg)	79	79
Service Kit Number	995058	995058



P6100

DIMENSIONS



HYDRALITE PS-SERIES 6" 72 TONNE AIRCRAFT HYDRAULIC JACK 

OVERVIEW

The HYDRALITE PS-Series is a lightweight jack specifically designed for aircraft maintenance applications. The 72-tonne Hydralite jack features a specially engineered ram with a custom socket design, making it compatible with multiple aircraft types. Built for strength, precision, and safety, the PS-Series delivers reliable performance while remaining easy to transport and operate in demanding aviation environments. Its robust construction, high stability, and smooth hydraulic control make it ideal for routine and heavy-duty aircraft maintenance tasks.

COMPATIBLE AIRCRAFT INCLUDE

- MD80
- A320
- A330
- B737 Classic
- B737 Next Generation
- B767-200 / 300

FEATURES

- 72-tonne lifting capacity
- Aircraft-specific socket ram
- Lightweight, portable design
- High stability and safety
- Smooth, controlled operation

SPECIFICATIONS

Model No.	*PS672Z (Plain)
Ram Capacity (Tonne)	72
Oil Capacity (L)	1.71
Stroke - mm (ins)	152 (6)
Lift per Stroke - mm (ins)	0.5 (0.02)
Weight (kg)	36.5
Working Pressure Bar (PSI)	771 (11,182)
Maximum Effort on Lever (kg)	50
Service Kit Number	133518

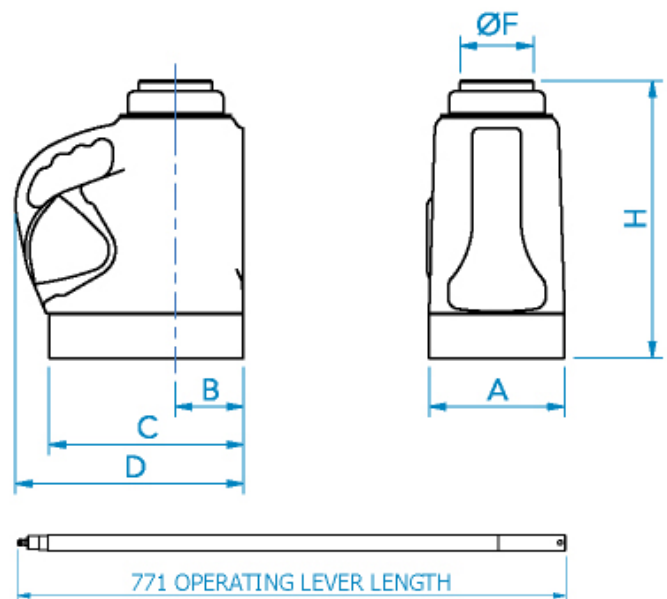
* Minimum Order Quantity applies. Please contact your local Specialised Force branch for more information.

DIMENSIONS

Dimensions mm (ins)	
A - Width	190 (7.5)
B - Centre Ram to Face	92 (3.6)
C - Base Length	251 (9.9)
D - Overall Depth	286 (11.3)
F - Ram Diameter	108 (4.3)
H - Closed Height	299 (11.8)



**PS672Z
 AIRCRAFT JACK**



HYDRAULIC JACKS

specialisedforce.com.au



HYDRAPAK PUMP

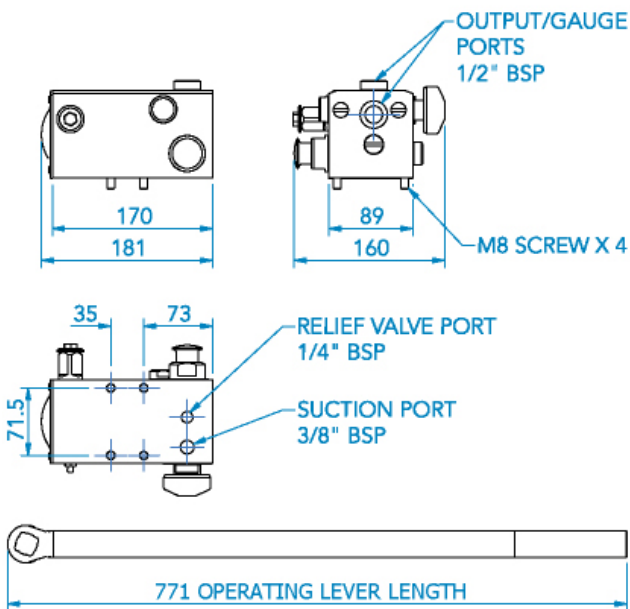
OVERVIEW

The Hydrapak pump is the ideal solution when no power source is available or when your primary power supply fails. Used worldwide, many Hydrapaks are kept as reliable backup systems, providing an alternative pumping method in critical situations. Compact and lightweight, the Hydrapak delivers working pressures from 110 bar to 1000 bar. It features two-speed operation for rapid prefill or no-load approach, with push-button changeover to high pressure. Optional factory-fitted relief valves enhance safety, while interchangeable plungers allow selection of optimal pressure and flow characteristics. Designed for portability and durability, the Hydrapak is suitable for a wide range of hydraulic applications. A choice of EP or nitrile seals further ensures reliability under varying conditions. Nitrile rubber seals are suitable for use with mineral oils, water, oil/water emulsions, paraffin, and glycerine. EP seals are available to order for applications using phosphate ester-based hydraulic fluids and vegetable-based brake fluids, and are compatible with Skydrol 500B and LD4. Please contact your Specialised Force representative for more information.

FEATURES

- Lightweight, only 4.5 kg
- Two-speed operation
- High-pressure output

DIMENSIONS



HYDRAPAK PH-Series

SPECIFICATIONS

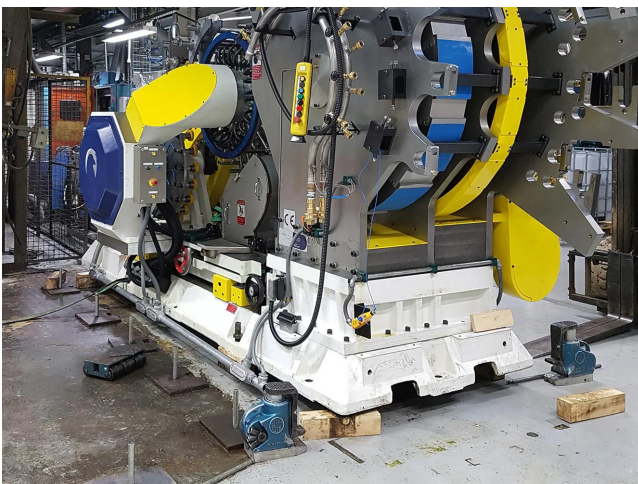
Model No.	PHO6000		PHO5000		PHO4000		PHO3000		PHO2000		PHO1000		PHO0000	
units of measurements	BAR	PSI	BAR	PSI	BAR	PSI	BAR	PSI	BAR	PSI	BAR	PSI	BAR	PSI
Max Pressure H.P. Stage	110	1600	172	2500	310	4500	448	6500	552	8000	700	10000	1000	14500
Max Pressure L.P. Stage	52	750	52	750	52	750	52	750	52	750	52	750	52	750
units of measurements	CC	CU INS	CC	CU INS	CC	CU INS	CC	CU INS	CC	CU INS	CC	CU INS	CC	CU INS
Displacement per Stroke H.P. Stage	22.61	1.38	14.47	0.883	8.13	0.496	5.65	0.345	4.57	0.279	3.62	0.221	2.5	0.153
Displacement per Stroke L.P. Stage	50.8	3.1	50.8	3.1	50.8	3.1	50.8	3.1	50.8	3.1	50.8	3.1	50.8	3.1

EXAMPLE APPLICATIONS



DEFENCE & MINING INDUSTRIES

Tangye products are recognised worldwide for their heavy-duty construction and lightweight design. The wide range of Tangye jack models makes them suitable for various applications across multiple industries, including defence, where they are often used for emergency bridge erection. Tangye jacks offer robust construction, high stability, and smooth hydraulic control, making them ideal for both routine and heavy-duty aircraft maintenance tasks. The Tangye HYDRACLAW series jack is Tangye's only all-steel jack. Its robust ferrous construction allows it to withstand rough treatment, making it ideal for mining engineers performing heavy lifts in confined working spaces, as well as for extensive use in underground applications.



HYDRAULIC JACKS

specialisedforce.com.au

EXAMPLE APPLICATIONS



CIVIL INFRASTRUCTURE, INDUSTRIAL & RAIL INDUSTRIES

Tangye jacks, due to their robustness, reliability, lightweight design, and ease of handling, are ideal for use in tight spaces. Their 100T capacity makes them suitable for most applications in the rail industry, including a variety of maintenance and lifting tasks. Tangye jacks are also a popular choice for civil infrastructure projects such as house lifting. Models equipped with a claw/toe are particularly well suited for lifting shipping containers and moving large industrial equipment, such as complex food and beverage production line machinery.

HYDRAULIC JACKS

specialisedforce.com.au

