



Integrated Retail Solutions

#### Infinite

Solution  
InforTab  
InforSense  
Tracking

#### Other Innovation

InforTab  
Retail Store  
Fashion Store  
InforTab System  
Bi-wireless Communicator



## A fully integrated solution not only for retail but for all businesses



InforTab Infinite, fully integrated business management solution, is about transferring offline experience to online and vice-versa. Shopping journeys will be more comfortable and enriched with ESLs, asset tracking, smart digital signage, inventory management, and environment control, all managed from the same software.



### PERFORMANCE

High efficiency compared to investment with dynamic pricing



### PRODUCTIVITY

Reduction of work time through real-time information update



### ROBUSTNESS

Rugged design and reduced weight to minimize the risk of breaking or failure



### HOMOGENEITY

Minimize defective rate through automated production



### STABILITY

Stable operation through 24-hour system monitoring



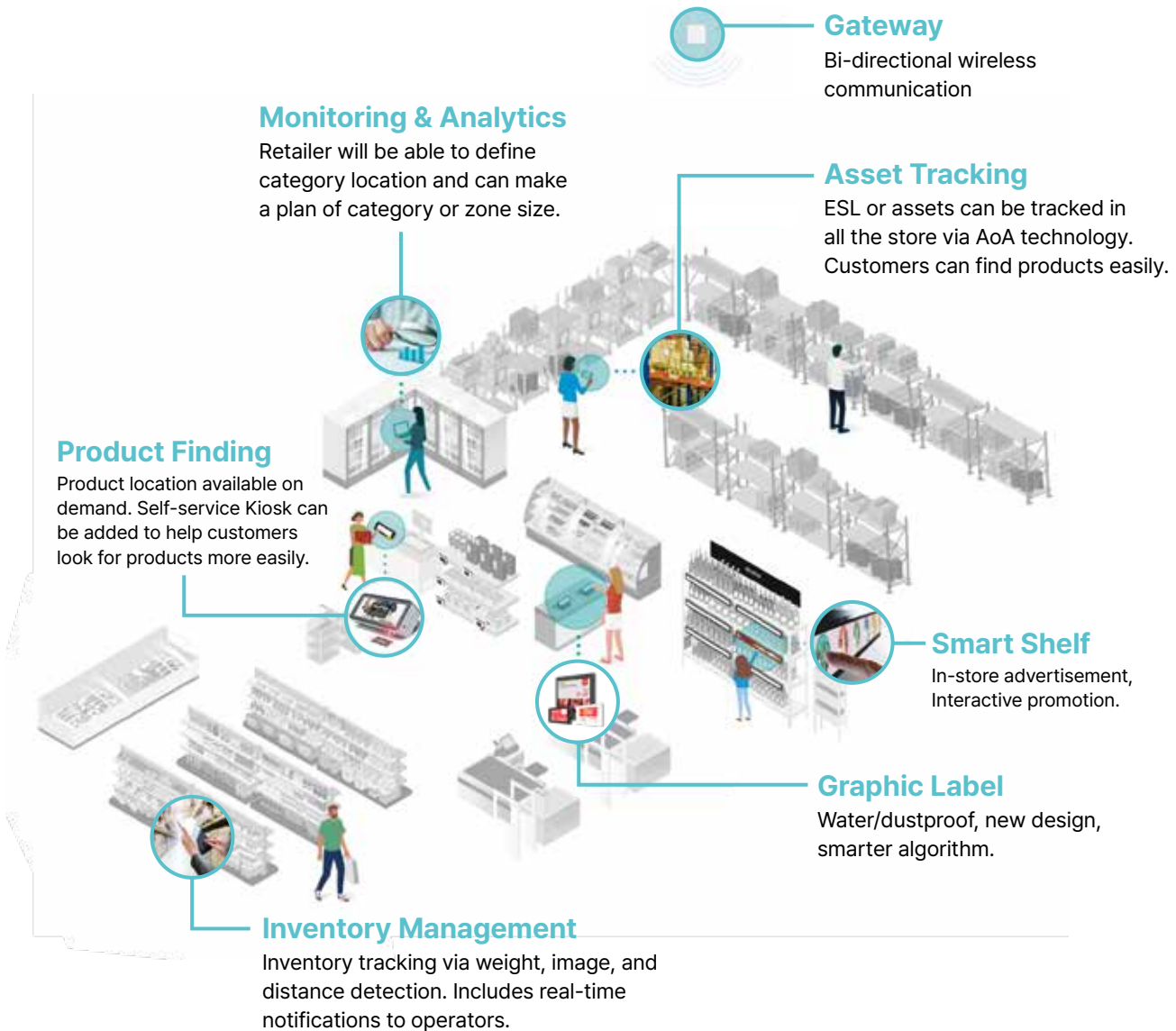
### SCALABILITY

Wide range of business application through RAINUS solutions such as price automation, O2O service, advertising service, asset tracking, etc.

## Integrated Store Management Solution

InforTab Infinite is the most advanced full graphics label by its easy integration with other solutions. It has all the features of an advanced ESL line, including waterproof/dustproof capabilities and can be used with solutions such as real-time update, asset management, and inventory management.

### COMPONENTS



Expand your horizons along with Electronic Shelf Label

All managed through a single Interface

## Next-gen ESL Integrated water / dustproof ESL

The Infinite ESLs are more powerful, bright, colorful, and sturdy, to be the most durable while giving an elegant and premium look & feel.

### KEY FEATURES



#### Water/Dustproof

Upgraded durability with IP67 rating



#### Asset Tracking

Accurate, real-time asset location



#### Faster update speed

Price updates 20% quicker



#### Smart Algorithm

Optimized battery usage & wake-up time determined via AI



#### Solution modularity

Options can be added / removed



#### Slim & Elegant Design

Thin bezel and widerscreen for high visibility

### COMPONENTS



#### 3&4 color pro ESLs

Water/dustproof to be used in fresh corners, cosmetics and many other retail areas.



#### Fashion tags

RFID tag for easy, automatised inventory management.



#### Blister tag

Easy clip accessory to attach to any surface. Slim enough to let products through.

- Fresh Corners ✓
- Freezer, Fridge ✓
- Cosmetics ✓

- Clothes ✓
- Shoes ✓
- Accessories ✓
- Bags ✓

- DIY products ✓
- Jewelry ✓
- Stationery ✓

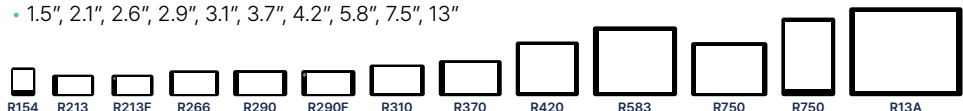
### PREVIOUS INFORTAB LINE-UP

#### COMMON SPECIFICATION



#### AVAILABLE SIZES

• 1.5", 2.1", 2.6", 2.9", 3.1", 3.7", 4.2", 5.8", 7.5", 13"



## Shelf Inventory Management

Inventory management is often resource-heavy and subject of profit loss. Our solutions enable more accurate inventory management and real-time analysis of on-shelf availability and Out-of-Shelf.

### INFORSENSE DISTANCE

Proximity Sensor



InforSense Distance measures distance between the sensor and the product to accurately determine how much stock remains on the shelf. Notifies store operators of low inventory.



### INFORSENSE WEIGHT

Weight Sensor



InforSense Weight detects the change in weight of products on the shelf and notifies managers of the stock quantity. Sends notifications to operators directly.



### INFORSENSE VISION

Image Recognition



InforSense Vision periodically detects the image of products on the shelf and notifies the stock status to managers.



## Indoor Environment Monitoring

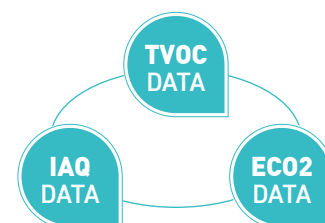
InforSense Environmental Sensor allow for real-time, simple and accurate air quality, temperature and humidity monitoring to ensure any anomaly can be detected and safety issues prevented at any time.

### INFORSENSE AIR

Air Quality (TVOC) Sensor



InforSense Air measures air quality to prevent fire and keep a clean shopping environment for customers.

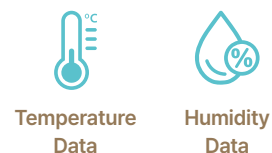


### INFORSENSE TEMP

Temp/Humidity Sensor



InforSense Temp tracks temperature and humidity in the store. The manager can thus monitor changes in temperature and humidity near products, always ensuring their freshness.





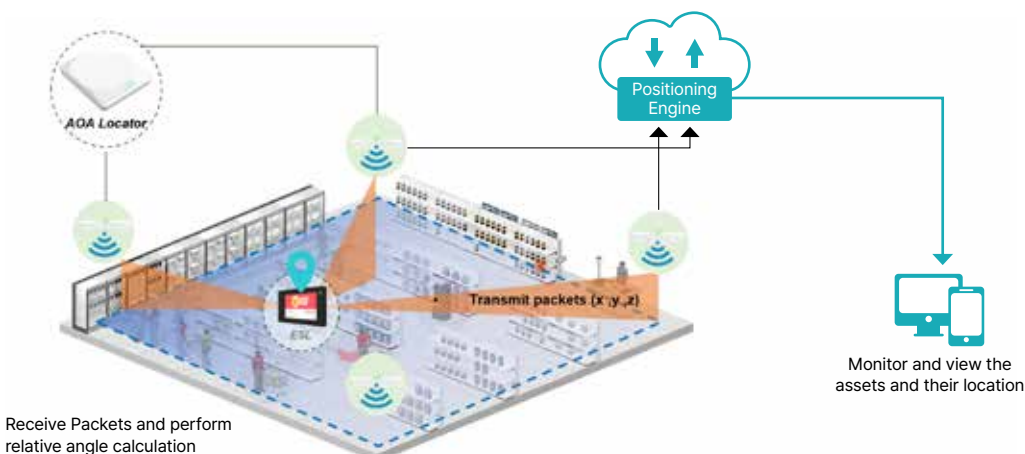
## Angle of Arrival Asset Tracking and Movement Tracking System

Through data transmission between the AOA Locator and the AOA labels, this solution tracks the movement path and location of an asset in real-time within 10 cm error range. In the case of a retail store, by attaching the AOA labels on shopping carts or baskets, this solution monitors and analyzes the path of customers.

### AOA LOCATOR



The positioning engine converts all location information into data through a technology based on the Angle of Arrival.



### Asset Tracking



The asset tracking system tracks the location of assets in real-time in places such as warehouses. It allows real-time identification of pallet check-in/out, equipment movement, and current location of assets in the warehouse.

### Monitoring & Analytics



A solution that monitors and analyzes customer movement paths to help strategically utilize space by placing specific products in frequently visited locations.

### USE CASE



#### Pick-Up service

#### Shopper Guidance

##### Result

1. Fast and accurate order product pickup
2. Reduced workload
3. Online sales growth



#### Analysis Shopper Behavior

##### Result

1. Increase customer convenience
2. Increase advertising effectiveness
3. Sales growth
4. Improving merchandising layout, category.



#### Dumb Bin (Pallets)

#### In-store storage

##### Result

1. Fast and accurate order product pickup
2. Reduced workload
3. Online sales growth



## Fashion Solution Fashion Electronic Shelf Labels for Operational Efficiency and Workload Reduction

InforTab Fashion line-up precisely meets the needs of the fashion industry. By using fashion tags as a retail electronic price tags, it can contribute to efficiency in fashion store operation and increase in sales.

### MAIN FEATURES

- Price Automation
- Digital Advertising
- Omnichannel Synchronization
- Shopper Connectivity
- In-Store Digital Service



The Fashion Tags combine all traditional labels usually found on clothes into a single one while remaining lightweight and slim, and reducing resource cost and time loss due to price label printing, recycling, etc.



The R13A is a 13" screen that runs on battery and allow to show mainly sales information and important product information on shelves. A4 format for easy adaptation.

The R11D is a dual-screen label that also runs on battery and allows users to display information at the front and at the back to ensure the best visibility in stores.



The lightweight and slim blister tags digitally transform all the traditional paper labels you see in the accessory section of DIY stores, reducing resource costs and lost time.



## ESL The most popular and versatile Electronic Shelf Label for Operational Efficiency and Workload Reduction

InforTab is an advanced solution supporting full graphics in three to seven colors. It can include specific information such as a price, barcode, graphics, promotion and currency details. InforTab can be easily designed and configured via the RAINUS software.

### COMMON SPECIFICATION



### AVAILABLE SIZES

• 1.5", 2.1", 2.6", 2.9", 3.1", 3.7", 4.2", 5.8", 7.5", 13"



#### R154

Dimensions 39.8 × 47.3 × 13.6 mm  
Resolution 140 dpi



#### R213

Dimensions 69.2 × 35.4 × 13.1 mm  
Resolution 130 dpi



#### R213F

Dimensions 69.2 × 35.4 × 13.1 mm  
Resolution 130 dpi  
Operation Temps -25 ~ 10°C



#### R266

Dimensions 82.0 × 42.5 × 12.9 mm  
Resolution 125 dpi



#### R290

Dimensions 89.0 × 42.9 × 13.1 mm  
Resolution 112 dpi



#### R290F

Dimensions 89.0 × 42.9 × 13.1 mm  
Resolution 112 dpi  
Operation Temps -25 ~ 10°C



#### R310

Dimensions 90.8 × 52.0 × 12.9 mm  
Resolution 110 dpi  
LED Not Available



#### R370

Dimensions 103.4 × 59.2 × 13.3 mm  
Resolution 130 dpi



#### R420

Dimensions 103.8 × 89.8 × 14.7 mm  
Resolution 120 dpi



#### R583

**Prior-Type**  
Dimensions 138.2 × 114.6 × 17.5 mm  
Resolution 120 dpi  
LED Not Available

#### New Type : Symmetric

Dimensions 138.2 × 114.6 × 17.5 mm  
Resolution 138 dpi  
LED Available



#### R750

**Prior-Type**  
Dimensions 187.0 × 132.5 × 17.5 mm  
Resolution 100 dpi  
LED Not Available

#### New Type: High Resolution, Symmetric

Dimensions 125.0 × 182.6 × 14.25 mm  
Resolution 124 dpi  
LED Available



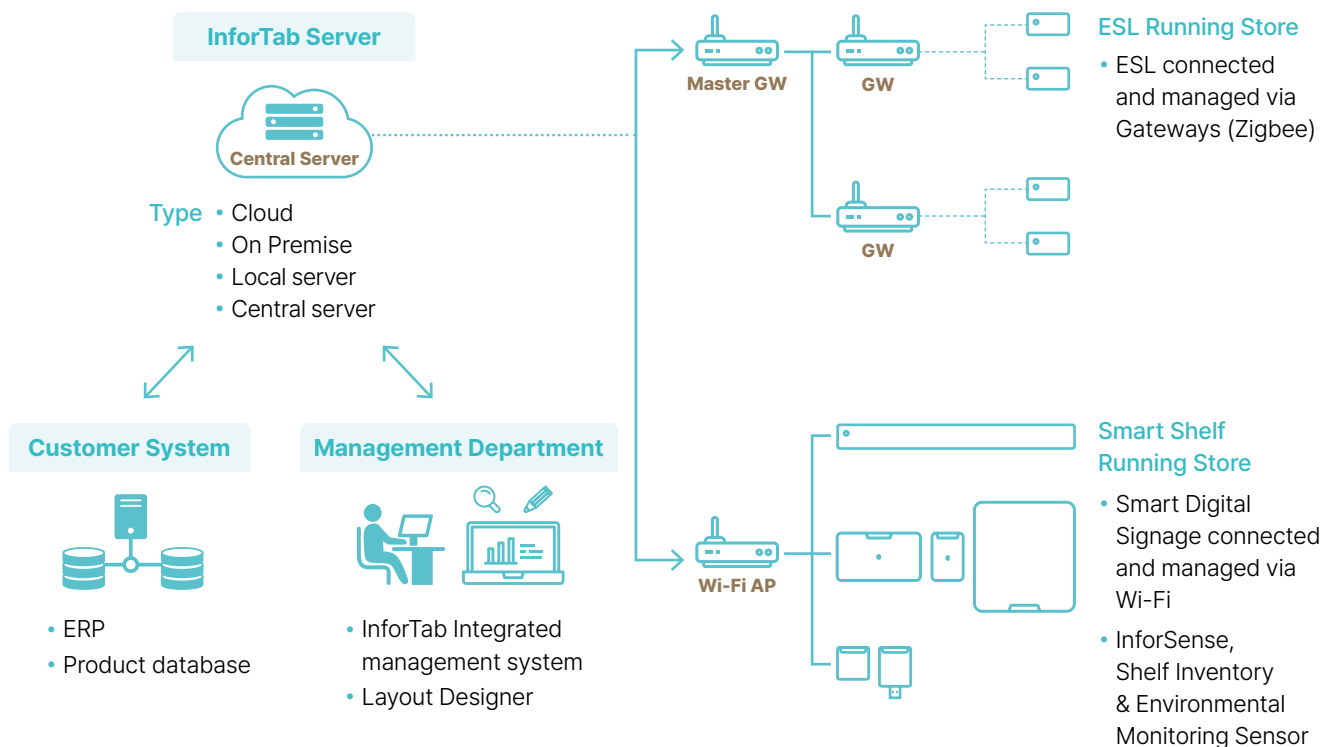
#### R13A

Dimensions 311.0 × 244.0 × 19.0 mm  
Resolution 88 dpi  
LED Not Available

## Our IoT/ICT Network Quick and easy deployment of IoT Integrated solutions

RAINUS develops and manufactures various IoT solutions usable in any industry, designed to make business operation more efficient, accurate, and reliable, be it in a store, warehouse, office, or even hospital.

### INFORTAB NETWORK



Expand your horizons along with Electronic Shelf Label

### MANAGEMENT SERVICE



#### NMS (Network Monitoring System)

- Map-Based Operations Management
- Managing graphical user interface
- Notice (Escalations): Errors, Alarms (Email, SMS)
- Server and gateway status monitoring
- Gateway S/W upgrade, log download
- Tag update status
- Check battery status



#### Layout Designer

- Arrangement of predetermined items on pages of ESL
- Supports various fonts
- Easy image editing support
- Inserting an image, QR-code, barcode, text
- Can save design templates

# BI-WIRELESS COMMUNICATOR



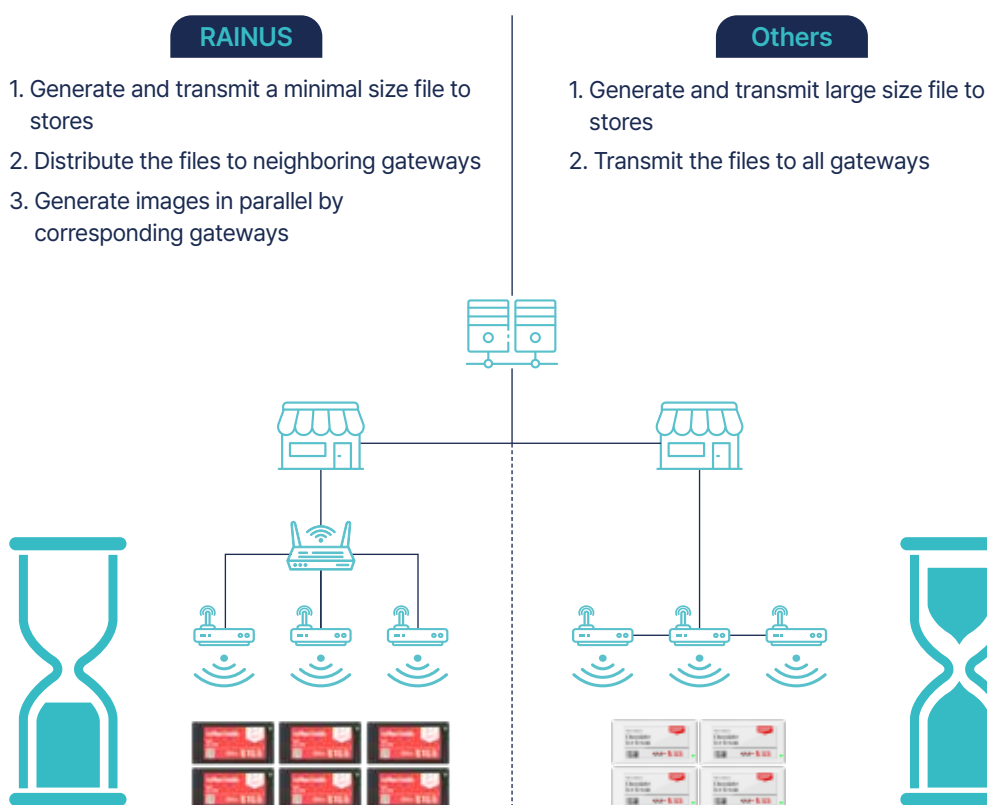
## Gateway Data transmission to all connected devices

Not only compatible with electronic shelf labels, but also with our product InforTab Plus (Digital Signage), and Other Solutions. It is a core communication device that plays the role of data transmission/reception for bi-directional communication between RAINUS devices and users. Ensures an indoor data coverage of up to 30m per model (Radius based on AP) and manages up to 18,000 electronic shelf labels per gateway. (\* Can differ according to environment)

### KEY FEATURES

- On Premise
- Cloud
- Fast Update
- Low Data Load
- Data Replication & Roaming Algorithm

Segmented image processing technology to maximize data processing speed and stability.  
(\* Fast image transfer speed even with large files)



Expand your horizons along with Electronic Shelf Label

### SPECIFICATION



Gateway (GD-2000)



Gateway Lite (GD-1000)

# GLOBAL REFERENCES



# CASE STUDY



Bennet is a well-established Italian hypermarket chain with 74 locations in northern Italy. They have installed 1 million of ESLs and proceeding with roll-out to all their stores.



ECity, successfully operates a chain world-class multi-brand electronics retail stores across UAE's leading shopping malls. Proceeding with installation of Rainus Solution in all stores.



PAM Panorama is a historic Italian retailer that adopted ESL in the early stage, decided to replace old ESLs with a new generation in 2022, and Selected Rainus instead of the former supplier due to high technology & efficiency, now doing a rollout of more than 120 stores for 1.6M of ESLs in 2023.



With Supermarket, Superstore and Hypermarkets, Migross can count on more than 50 stores in Italy. Rainus and Migross are consolidating their partnership through the full-chain rollout of the Rainus solution.





Visotto Supermarket is one of the most important grocery chain in Italy. After tested all Vendors Solutions, Visotto choose Rainus for the roll-out of 24 stores for half millions of ESLs.



Bic Camera is one of the biggest electronics retailer chains in Japan, rolled out all stores nationwide, recording 200,000 ESL tags in a single store.



7-eleven have installed InforTab in 35 of their stores in South Korea since 2018, including in their unmanned stores.



Conad is the largest Italian supermarket chain with more than 3000 stores. Proceeding for installation of 120.000 ESLs.



A major consumer electronics retailer which operates 1,200 stores and 400 company-owned stores on average with 11K SKUs per store in Japan. Rolled out InforTab in 370 stores, with 4.5 million tags installed.



Olive Young is a cosmetics chain popular internationally. They have rolled out InforTab Plus in 2021 to increase sales and customer engagement, and have reported increase in both sectors.

Expand your horizons along with Electronic Shelf Label



Lotte Super, giant supermarket chain, has decided to roll out InforTab and InforTab Plus in 155 of their locations in South Korea, with a total of 400,000 tags to be installed in 2022.

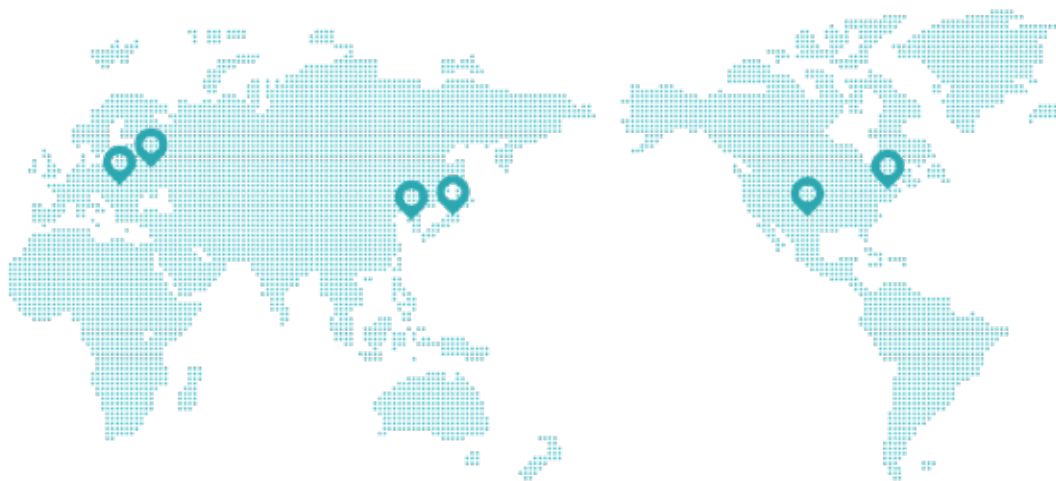


Croma is an Indian retail chain for consumer electronics. 300 stores across India were rolled with centralized server.



No.1 department store franchise in South Korea, rolled out 13 of its branches in Korea, including the premium wine store called "Wine House".





rainus

## Global Offices

### RAINUS Headquaters

829 Pangyo 2nd Techno Valley,  
293, Siheung-dong, Sujeong-gu,  
Seongnam-si, Gyeonggi-do,  
Republic of Korea

[sales@rainusbiz.com](mailto:sales@rainusbiz.com)  
+82-70-7564-0343  
+82-70-4820-1939

### RAINUS America

720 E.Palisade Ave, #104  
Englewood Cliffs  
NJ 07632, USA  
  
1400 Preston Rd, #335  
Plano, TX 75093, USA

[kevin@rainusbiz.com](mailto:kevin@rainusbiz.com)  
+1-201-956-8707

### RAINUS Europe

Viale Serfontana 10,  
6834 Morbio Inferiore,  
Switzerland

[billy.lee@rainusbiz.com](mailto:billy.lee@rainusbiz.com)  
+41-91-682-4747

### RAINUS Deutschland

Ridlerstrasse 11, 80339  
München, Germany

[pietro.frisoli@rainus.eu](mailto:pietro.frisoli@rainus.eu)  
+39-327-025-1205

### RAINUS Japan

3F, VORTueno, 7-4-7,  
Ueno, Taito-ku,  
Tokyo, Japan

[dykim@rainusbiz.com](mailto:dykim@rainusbiz.com)  
+81-3-5812-4993