

Digital Transformer Ratiometer

FEATURES

- ▶ Measures power transformers, VT/PTs, and current transformer CT turns ratios
- ▶ Direct turns ratio readings from 0.8000:1 to 8000.0:1
- ▶ Tests performed by exciting the primary and reading the secondary; provides safer conditions for the operation
- ▶ Displays turns ratio, excitation current, winding polarity and % deviation from the nameplate values
- ▶ Internal NiMH battery packs provide up to 10 hours of continuous operation
- ▶ Smart/fast battery charger with universal input voltage (100-24V, 50-60Hz) charges batteries in less than 4 hours
- ▶ Display warns of incorrect lead connection, reverse polarity, open and short circuits
- ▶ Includes DataView® analysis software for onfiguring, downloading, storing, and report generation of test data



Quick and easy to use tool to inspect new incoming transformers

Our products are backed by over 100 years of experience in test and measurement equipment, and encompass the latest international standards for quality and safety.

Technical Hotline: (800) 343-1391
www.aemc.com

 **AEMC**[®]
INSTRUMENTS
CHAUVIN ARNOUX GROUP

MODEL 8510



FEATURES

- ▶ Measures power transformers, VT/PTs and current transformer CT turns ratios
- ▶ Displays turns ratio, excitation current, winding polarity, and % deviation from the nameplate values
- ▶ Smart/fast battery charger with universal input voltage (100-240V, 50-60Hz) charges batteries in less than 4 hours
- ▶ Ratio test results in less than 7 seconds
- ▶ Internal NiMH battery packs provide up to 10 hours of continuous operation
- ▶ Tests performed by exciting the primary and reading the secondary; provides safer conditions for the operator
- ▶ Display warns of incorrect lead connection, reverse polarity, open and short circuits
- ▶ Easy connection and test setup; no calibration or balancing required
- ▶ Large dual display with adjustable contrast ensures clearer visibility in any lighting environment day or night
- ▶ Low battery indicator
- ▶ Includes 15 foot lead set
- ▶ Stores up to 10,000 test results in internal memory automatically or by user selection
- ▶ Filter selection to improve test results in electrically noisy environments
- ▶ USB port facilitates configuring the instrument and downloading test results
- ▶ Includes DataView® software for instrument configuration, data storage, analysis, and report generation

Product 2136.50 Includes

- NiMH batteries (installed)
- 115V power cord
- Set of 2, 15ft leads
- 10ft USB cable
- External battery charger
- Soft carrying case

Accessories/Replacement Parts

- 2136.76 Set of 2, 30ft leads for use with DTR® Models 8500 & 8510
- 2136.77 Set of 2, 15ft leads for use with DTR® Models 8500 & 8510

APPLICATIONS

- ▶ Power transformers
- ▶ Potential transformers
- ▶ Current transformers

SPECIFICATIONS

ELECTRICAL		
Ratio Range (VT/PT)	Auto-Ranging: 0.8000 to 8000:1	
Accuracy (VT/PT)	Ratio Range	Accuracy (% of Reading)
	0.8000 to 9.9999	± 0.2%
	10.000 to 999.99	± 0.1%
	1000.0 to 4999.9	± 0.2%
	5000.0 to 8000.0	± 0.25%
Ratio Range (CT)	Auto-Ranging: 0.8000 to 1000.0	
Accuracy (CT)	Ratio Range	Accuracy (% of Reading)
	0.8000 to 1000.0	± 0.5%
Excitation Signal	VT/PT Mode: 32Vrms max; CT Mode: Auto Level 0 to 1A, 0.1 to 4.5Vrms	
Excitation Current Display	Range: 0 to 1000mA; Accuracy: ± (2% of Reading + 2mA)	
Excitation Frequency	70Hz	
Ratio Test Time	<7 seconds	
CONT/Ratio Test Time	<35 seconds	
Display	Dual line alpha-numeric LCD, 16x2 characters with contrast adjustment and backlight control. Day/night visible.	
Languages Supported	English, Spanish, French, Italian, German, Portuguese	
Measurement Method	In accordance with IEEE Std C57.12.90™-2006	
Power Source	Two 12V, 1650mAH NiMH rechargeable battery packs	
Battery Life	Up to 10 hrs of continuous operation. Low battery indication.	
Battery Charger	Universal input (90 to 264Vrms input) smart recharger	
Charging Time	<4 Hrs to full charge	
Data Storage	10,000 tests	
Date/Time	Battery-backed, Real-time clock	
Communication	USB. 2.0 compliant, optically isolated, 115.2 KB	
Software	DataView® analysis software included	
MECHANICAL		
Dimensions	10.70 x 9.76 x 5.12" (272 x 248 x 130 mm)	
Weight	8.1 lbs (3.7kg)	
Connection	XLR connectors	
Leads	15 ft (4.6m) H & X shielded with color-coded alligator clips	
Enclosure	Heavy duty Polypropylene case, UL 94 V0 rated	
Vibration	IEC 68-2-6 (1.5mm to 55Hz)	
Shock	IEC 68-2-27 (30G)	
Drop	IEC 68-2-32 (1m)	
Index of Protection	IP 40 (Instrument lid open) per EN 60529; IP 53 (Instrument lid closed) per EN 60529	
SAFETY		
CE Mark	Yes	
Double Insulation	Yes	
Safety Ratings	EN 61010-1; 50V CAT IV; Pollution Degree 2	

Model 8510 Construction



Model 8510 Displays

UT/PT CONT N M
P19920 s7200

Main display

Test Mode
CONT/Ratio

Easy selection of test mode

Ratio: 12.187:1
C: 1mA D: 1.55%

Test results displayed

OBJ#:01 Test#:01
P19920 s7200

Store test results into internal memory

Check for H<>X
Cable Reversal

Clear indication errors in connection and other conditions

PRI : 19920
SEC : 7200

Program and store up to 10 nameplate ratios

The DTR® Model 8510 is a portable digital transformer ratiometer designed for on-site testing of power, potential, and current transformers. When connected to a non-energized transformer, the DTR® accurately measures primary to secondary turns ratio, while simultaneously displaying polarity and excitation current.

The Model 8510 is a second-generation instrument incorporating the latest technology, improving on its highly successful predecessor the Model 8500.

The DTR® is fully automatic and uses the IEEE C57.12-90™-2006 test method. No user calibration, range selection, hand cranking, or tedious balancing is required. At each measurement, the DTR® automatically checks for open windings, connections, circuit breakers, short circuits (excess excitation current), incorrect test lead placement, and reverse polarity. Measurements are displayed quickly and accurately.

The DTR® is designed with operator safety in mind. Tests are performed at low voltage and, unlike other ratiometers, step-down excitation is employed. This method, in conjunction with an integral H/X reverse protection circuit, guards against the generation of hazardous test voltages normally associated with other transformer ratio measurement instruments.

A large, dual line alphanumeric LCD with adjustable contrast and backlight guarantees day/night readability. Power is supplied by integral NiMH battery. Batteries are charged by an external smart charger. Both rugged and reliable, the Model 8510 is built into an attractive, sealed structural polypropylene case designed to withstand the rigors of field use.

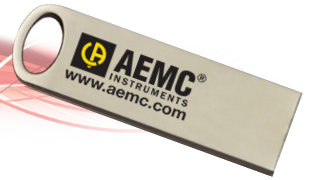
Up to 10,000 tests can be stored in the DTR's internal memory and downloaded to a PC for analysis and report generation using the included DataView® software.

Constructed using only the highest quality electrical and mechanical components, the DTR® sets the standard in advanced design, engineering and workmanship, and it will provide the user with years of accurate and reliable measurements and hassle free test report printouts.



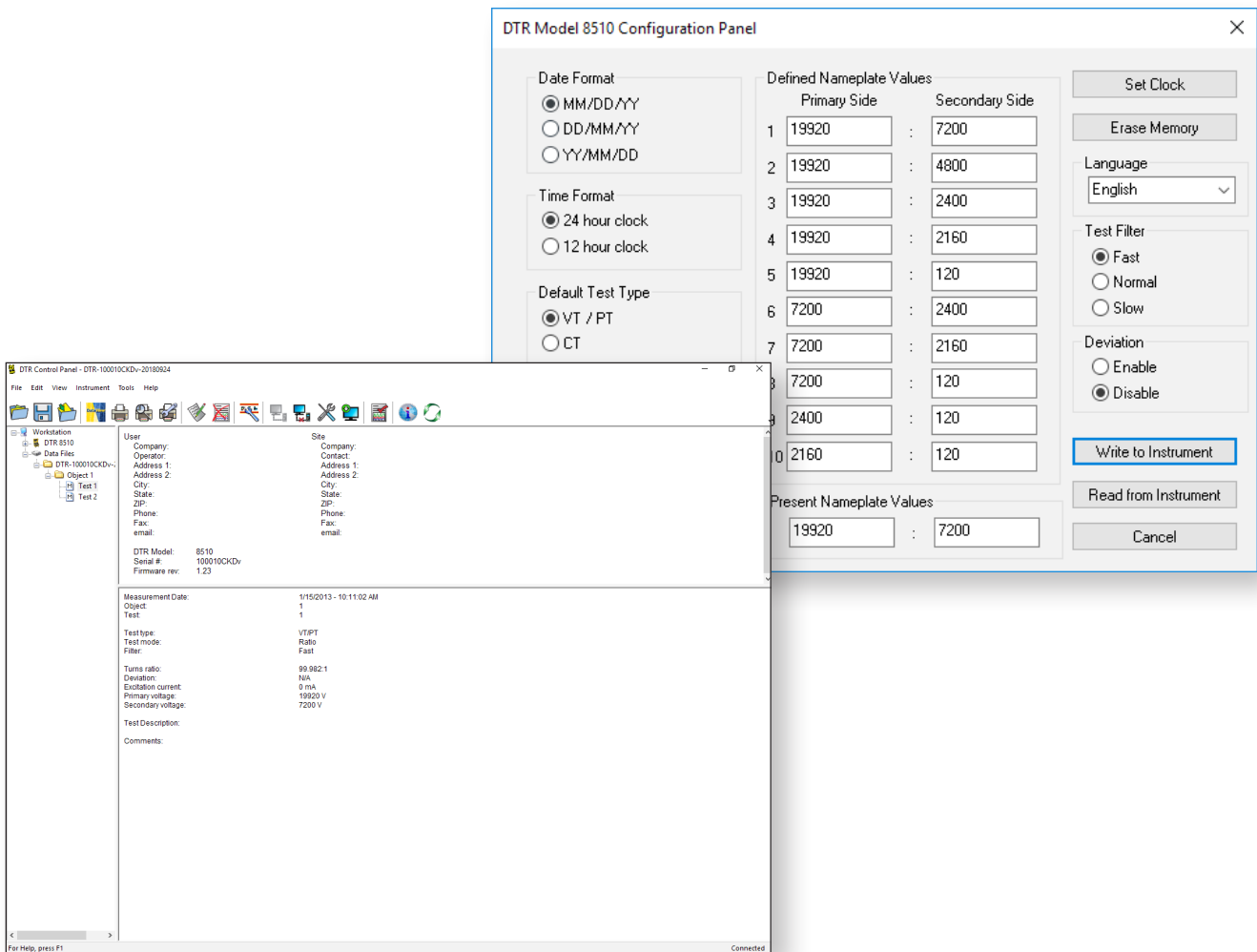
The Quick Tester Model 8505 is a hand-held instrument for performing quick, basic integrity tests on all transformers and capacitors used by electrical utilities. The Model 8505 verifies transformer winding continuity without requiring a full transformer ratio test. A single user can check a shipment of incoming transformers. Any units that have a defective coil can be quickly pinpointed and turned around for repair. The instrument provides simple, single-button operation whereby the user only needs to make the proper connections and push a button. Test results are clearly indicated by bright LEDs and (when applicable) a buzzer. The instrument includes captive cables with safety clips, a test probe, built-in fuse protection, and operates on four AA batteries.

DataView[®]



FEATURES

- ▶ Display and analyze data on your PC
- ▶ Configure DTR[®] Model 8510 functions and parameters from your PC
- ▶ Customize views, templates, and reports to your exact needs
- ▶ Create and store a complete library of configurations that can be uploaded to the DTR[®] Model 8510 as needed
- ▶ Run tests directly from PC
- ▶ Print reports using standard or custom templates you design



QUICK TESTER

MODEL 8505



FEATURES

- ▶ Checks coil continuity on single- and three- phase transformers
- ▶ Detects open or shorted coils and capacitors
- ▶ Detects switch open and closed positions
- ▶ Automatically identifies device as a transformer or capacitor
- ▶ Single button operation
- ▶ Bright LED indicators and buzzer for T and C
- ▶ Coiled captive test leads extend to 6ft each
- ▶ Test probe with 5.75" (146mm) shaft ideal for insertion into protective shroud to reach test point
- ▶ Multi-frequency source signals improves test reliability and accuracy
- ▶ Microprocessor based design for control, stability, and repeatability
- ▶ Built-in self-test inductance and capacitance
- ▶ Fuse protected
- ▶ Battery operated; more than 2500 tests on a full charge
- ▶ Low battery indicator begins to blink when capacity of ~100 tests remain

SPECIFICATIONS

ELECTRICAL	
Short	<20Ω
Open	>20Ω
Transformer	>1mh
Capacitor	0.5μf to <1mf
Power Source	4 x 1.5V AA (LR6) Alkaline batteries (included)
Battery Life	More than 2500 ten second tests on a full charge
Low Battery Indicator	Red LED blinks; approximately 100 tests can be conducted when LED starts to blink
MECHANICAL	
Dimensions	7.2" x 3.65" x 1.26" (182.9 x 92.7 x 32mm) w/o leads
Weight (with battery)	14.4oz (408g)
Case	UL94
Vibration	IEC 68-2-6 (1.5mm, 10 to 55Hz)
Shock	IEC 68-2-6 (1.5mm, 10 to 55Hz)
Drop	IEC 98-2-32 (1m)
ENVIRONMENTAL	
Operating Temperature	14° to 122°F (-10° to 50°C)
Storage Temperature	-4° to 140°F (-20° to 60°C)
Relative Humidity	0 to 85% at 95°F (35°C), non-condensing
Altitude	2000m
SAFETY	
Safety Rating	EN61010-1; 50V CAT IV
Environmental	IP30

Product 2136.51 Includes

- Probe
- 2 Alligator clips
- Soft carrying case
- User manual

Accessories/Replacement Parts

- 2139.72 Soft Carrying Case
- 5000.70 Probe
- 5000.71 One Black Alligator Clip

United States & Canada

Chauvin Arnoux®, Inc.
d.b.a. AEMC® Instruments
200 Foxborough Blvd.
Foxborough, MA 02035 USA
(508) 698-2115 • Fax (508) 698-2118

Customer Support
for placing an order,
obtaining price & delivery
(800) 343-1391
customerservice@aemc.com

Sales & Marketing Department
for general sales and marketing
information
sales@aemc.com
marketing@aemc.com

Repair & Calibration Service
for information on repair & calibration
repair@aemc.com

United States & Canada (continued)

**Technical & Product
Application Support**
for technical and application support
(800) 343-1391
techinfo@aemc.com

Webmaster
for information regarding our website
www.aemc.com
webmaster@aemc.com

South America, Central America, Mexico & the Caribbean

Chauvin Arnoux®, Inc.
d.b.a. AEMC® Instruments
15 Faraday Drive
Dover, NH 03820 USA
export@aemc.com

Australia & New Zealand

Chauvin Arnoux®, Inc.
d.b.a. AEMC® Instruments
15 Faraday Drive
Dover, NH 03820 USA
export@aemc.com

All other countries

Chauvin Arnoux® SCA
190, rue Championnet
75876 Paris Cedex 18, France
Tel 33 1 44 85 45 28
Fax 33 1 46 27 73 89
info@chauvin-arnoux.com
www.chauvin-arnoux.com

**TEST & MEASUREMENT
INSTRUMENTS**

VOLUME 18

- Cable Testers
- Clamp-On Meters
- Current Measurement Probes
- Data Loggers
- DC Power Supplies & Decade Boxes
- Digital Multimeters
- Electrical Test Tools
- Environmental Testers
- Ground Resistance Testers
- High Voltage Testers
- Leakage Current Meters & Probes
- Megohmmeters
- Micro-Ohmmeters
- Oscilloscopes
- Power Quality Analyzers, Meters & Loggers
- Thermal Imaging
- Transformer Ratio Meters

**AEMC®
INSTRUMENTS**
CHAUVIN ARNOUX GROUP

WWW.AEMC.COM TECHNICAL HOTLINE: (800) 343-1391

GROUND TESTERS
For all of your Ground Testing needs...

POWER QUALITY
For all of your Power Quality needs...

MEGOhmmeters
For all of your Insulation Testing needs...

Our products are backed by over 100 years of experience in test and measurement equipment, and encompass the latest international standards for quality and safety.

Technical Hotline: (800) 343-1391
www.aemc.com

**AEMC®
INSTRUMENTS**
CHAUVIN ARNOUX GROUP

AEMC ONE SOURCE®
For All Your Electrical Test & Measurement Instruments

Visit our website at www.aemc.com

Call the AEMC® Instruments Technical Assistance Hotline for immediate consultation with an applications engineer: (800) 343-1391
Chauvin Arnoux®, Inc. d.b.a. AEMC® Instruments • 200 Foxborough Blvd. • Foxborough, MA 02035 USA • (800) 343-1391 • (508) 698-2115 • Fax (508) 698-2118
Export Department: (603) 749-6434 (x520) • Fax (603) 742-2346 • E-mail: export@aemc.com