

ASTREA

GOLDEN DAWN OTTELIEN HUCKIN



ARTELLITE

Degree
ART

CONTEMPORARY COLLECTIVE

THE DIRECTORS OF DEGREEART.COM & THE BINGHAM RIVERHOUSE PRESENT:

ASTREA

GOLDEN DAWN OTTELIEN HUCKIN

4TH FEBRUARY - 19TH MARCH 2023

PRIVATE VIEW: 6TH FEBRUARY 6:30PM TIL LATE (INVITE ONLY)

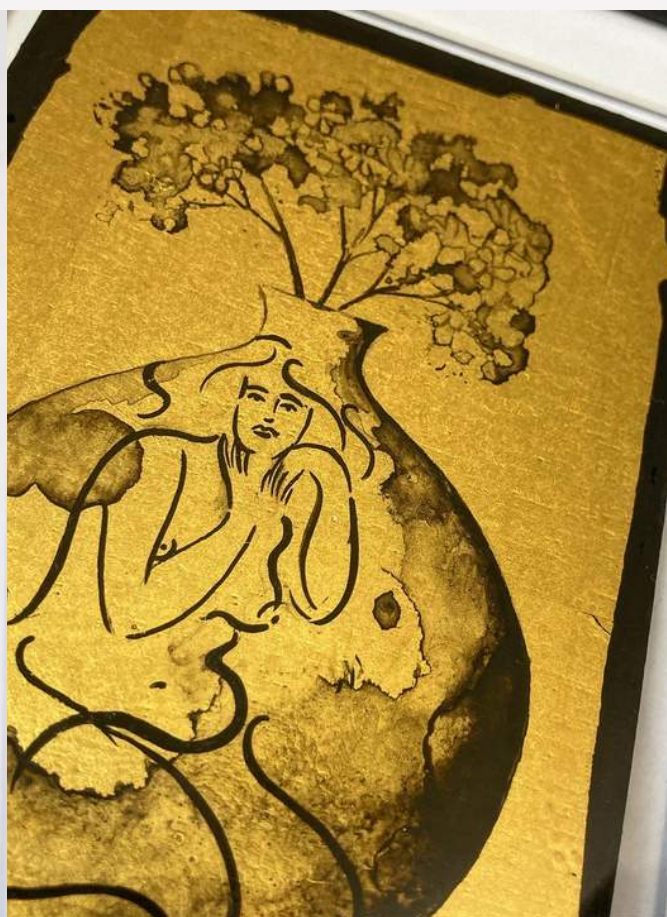
Astraea, the last immortal to live among humans during the Golden Age of Man, is the beloved virgin deity of justice, innocence, purity, and precision. Often referred to as the 'Star Maiden' she represents all that is good in the world and offers a beacon of hope that a new age of innocence will one day return.

With her unique interpretation of the female figure Ottelien Huckin's artwork contemplates what it means to inhabit the 'body' through layered, powerful, sensual, joyful interpretations. Entrenched in a long art historical discourse dictated by 'the male gaze', her practice aims to reveal the figure in an autonomous, empowered way through her new found love of traditional craft techniques; drawing, Delft tile and the 17th century art form of Japanning. Astrea; A Golden Dawn is an exhibition to evoke rejuvenation as we enter a new dawn and look forward, with hope, to the future.

THE BINGHAM RIVERHOUSE

61-63 PETERSHAM ROAD, RICHMOND UPON THAMES, TW10 6UT

SALES/ PRESS: JENNA@DEGREEART.COM / 0203 701 7411





Ottelien Huckin (born 1993, UK) graduated from Edinburgh College of Art in 2016 and attended The Sotheby's Institute of Art in 2019. Ottelien was a Painting finalist for Degree Art's 'The Signature Art Prize' (2019) and continued on to be Contemporary Collective's Artist in Residence at Bankside Hotel, London (2020). Most recently Ottelien's work has been featured in The New York Times Magazine, and she was selected as a semi-finalist for the Royal Society of British Artists (RBA) Rome Scholarship Award and exhibited at the Annual Exhibition at Mall Galleries (2022).

"The UK's Covid-19 lockdown presented a perfect time to slow down, reflect and explore new mediums within my practice. I was intrigued by a craft called 'japanning', a 17th century European decorative technique that was developed to imitate Japanese lacquer. It is officially on the Heritage Crafts Association's (HCA) red list of endangered crafts. I immediately felt that the time-consuming process contrasted perfectly with my fluent approach to drawing. Powerful, sensual, painful, vulnerable, joyful - when I draw or paint the female figure I often contemplate what it means to inhabit my own body. Entrenched in a long art historical discourse dictated by 'the male gaze', my practice aims to reveal the nude in an autonomous, empowered and sensual way by reinterpreting old master drawings with my own life drawing observations and intuition."

To create the rich and reflective surface, each panel received 30 layers of pigmented shellac varnish over the course of a couple of weeks. Each piece was then hand painted with gold size, gilded with gold leaf and then painted with Indian ink.

Hang in natural for a beautiful shine, and watch it glow at night!

AS FEATURED IN:

THE NEW YORK TIMES STYLE MAGAZINE

IN THE SUMMER OF 2022, THE NEW YORK TIMES STYLE MAGAZINE FEATURED OTTELIEN'S DELFT PROCESS IN THEIR MAGAZINE AND IN THIS BEAUTIFUL VIDEO.



WATCH NOW

JAPANNING

JAPANNING IS A TYPE OF FINISH THAT ORIGINATED AS A EUROPEAN IMITATION OF EAST ASIAN LACQUERWORK. IT WAS FIRST USED ON FURNITURE, BUT WAS LATER MUCH USED ON SMALL ITEMS IN METAL AND WOOD..

ORIENTAL LACQUER OBJECTS WERE FIRST IMPORTED INTO EUROPE IN THE LATE SIXTEENTH CENTURY. IMITATIONS OF LACQUER AND OTHER DECORATIVE SURFACES BY EUROPEAN CRAFTSMEN USING THEIR OWN MATERIALS AND TECHNIQUES WERE KNOWN AS 'JAPANNING'. THE ART OF JAPANNING EVOLVED IN THE NEXT TWO CENTURIES, AS NEW VARNISHING METHODS WERE DEVELOPED, AND ADDITIONAL MATERIALS BECAME AVAILABLE. JAPANNED OBJECTS CONSIST OF A VARIETY OF MATERIALS THAT WERE OFTEN APPLIED IN COMPLEX LAYER STRUCTURES. THE DIFFERENT PROPERTIES OF THE NUMEROUS SUBSTANCES CAN CAUSE STRESS, WHICH IN TURN DAMAGES THE COATING.

KATJA TOVAR AZUERO

FURNITURE CONSERVATOR,

THE VICTORIA AND ALBERT MUSEUM



THE JAPANNING COLLECTION



"Rose I"

Japanned panel with gold leaf
gilding,
13 x 13cm (framed)

£250.00

MORE INFO



'Rose II'

Japanned panel with gold leaf gilding,
13 x 13cm (framed)

£250.00

MORE INFO



'Emmeline and the Butterfly'

Jappanned panel with gold leaf gilding

24 x 32cm (framed)

£750.00

MORE INFO



'Daffodils at Dawn'

Jappaned panel with gold leaf gilding

24 x 32cm (framed)

£750.00

MORE INFO



'Peonies at Dawn'

Japanned panel with gold leaf gilding
24 x 32cm (framed)

£750.00

MORE INFO



'Eliza in the Meadow'

Jappanned panel with gold leaf gilding
32 x 45cm (framed)

£1,350.00

MORE INFO



'Emilia'

Panel with gold leaf and black ink.
17 x 22cm (framed)

£175.00

MORE INFO



'Ava'

Panel with gold leaf and black ink.
17 x 22cm (framed)

£175.00

MORE INFO



'Georgina'

Panel with gold leaf and black ink.
17 x 22cm (framed)

£175.00

MORE INFO



'Elena'

panel with gold leaf and black ink.
17 x 22cm (framed)

£175.00

MORE INFO



'Hollyhocks and Butterflies'

Japanned panel with gold leaf gilding

32 x 45cm (framed)

£1,350.00

MORE INFO



'Butterfly Bush'

Japanned panel with gold leaf gilding
17 x 23.5cm (framed)

£400.00

MORE INFO



'Honeybees and Daffodils'

Japanned panel with gold leaf gilding
17 x 23.5cm (framed)

£400.00

MORE INFO



'Love is Like a Butterfly I'

Japanned panel with gold leaf gilding

17 x 23.5cm (framed)

£400.00

MORE INFO



'Love is Like a Butterfly II'

Jappaned panel with gold leaf gilding
17 x 23.5cm (framed)

£400.00

MORE INFO



'Love is Like a Butterfly III'

Jappaned panel with gold leaf gilding
17 x 23.5cm (framed)

£400.00

MORE INFO



'Dahlia'

japanned panel with gold leaf gilding
17 x 23.5cm (framed)

£400.00

MORE INFO



'Emmeline'

Japanned panel with gold leaf gilding
17 x 23.5cm (framed)

£400.00

MORE INFO



'Butterflies Amongst the Hydrangeas'

Jappanned panel with gold leaf gilding
17 x 23.5cm (framed)

£400.00

MORE INFO



'Wild Poppy'

Japanned panel with gold leaf gilding
17 x 23.5cm (framed)

£400.00

MORE INFO



'Swallows in a Golden Sky'

Jappaned panel with gold leaf and ink painting
62 x 87cm (framed)

£2,300.00

MORE INFO



'Swallows at Dusk I'

Japanned panel with gold leaf and ink painting

44 x 62cm (framed)

MORE INFO

£1,800.00



'Swallows at Dusk II'

Japanned panel with gold leaf and ink painting
44 x 62cm (framed)

£1,800.00

MORE INFO



'Swallows at Dusk III'

Japanned panel with gold leaf and ink painting

44 x 62cm (framed)

£1,800.00

MORE INFO



'Swallows at Dusk IIII'

Japanned panel with gold leaf and ink painting

44 x 62cm (framed)

£1,800.00

MORE INFO



'Two Starlings and a Butterfly' (Triptych)

Japanned panel with gold leaf gilding

68 x 34cm (framed)

£2,200.00

[**MORE INFO**](#)



'Two Starlings and a Butterfly 2' (Triptych)

Japanned panel with gold leaf gilding

68 x 34cm (framed)

£2,200.00

[**MORE INFO**](#)

THE PAINTING COLLECTION



'Iris'

Oil bar on canvas

130 x 140cm

£3,200.00

MORE INFO



'Two Virtues'

Oil bar on canvas

95 x 130cm

£2,700.00

MORE INFO



'Leda and the Swan'

Oil bar on canvas

120 x 95cm

£2,700.00

MORE INFO



'Swan Song'

Oil bar on canvas

125 x 105cm

£2,700.00

MORE INFO



'The Dancers'

Oil bar on canvas

85 x 130cm

£2,500.00

MORE INFO



'Reclining Nude'

Oil bar on canvas

120 x 90cm

£2,500.00

MORE INFO

