

27 May 2020

Dear Parents/Guardians

RE: RETURN TO SCHOOL – PHASE 1

Ke nako! It is time! The JCA Staff are currently busy preparing our facilities to be ready to receive our first group of learners back at School. Life at School will be different than what we used to know, but we choose to face the new challenges with faith and hope, knowing that God, the great I AM, knows the way during this time and we can rest assured that He will be our Helper along the way. We are reminded of Proverbs 3: 5 – 6 that says: *“In all your ways acknowledge Him, and He will make straight your paths.”*

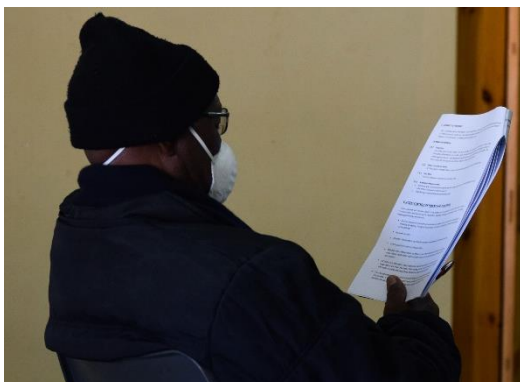
We are thankful for our maintenance team who is always willing to serve, no job is ever too big or small for them. They are currently hard at work, painting markers to ensure social distancing around the school grounds. The facilities have been cleaned and sanitised to ensure that we meet all the requirements prescribed by the Department of Basic Education. Teachers reported to School on Monday 25 May 2020 and received orientation on all protocols and procedures to be implemented.



The maintenance team painting distancing markers along the corridors and aftercare areas.



Mama Dorah is making sure our facilities are clean.



Teacher orientation on Covid-19



RETURN DATES FOR ALL GRADES:

During the latest announcement by the Minister of Basic Education on 19 May 2020, it was stated that the opening of schools will follow a phased approach, and the first group to return will be grade 7 on 1 June 2020. The Minister mentioned that discussions will take place during the course of the month to address the phase in approach for small, private schools such as JCA. This implied that if we have our facilities ready and meet all the criteria, we would most likely be allowed to phase in more grades in a shorter period of time than what public schools are allowed to do.

We are anxiously waiting to hear from the Gauteng DBE regarding specific instructions for submission of our school Health and Safety Plans and are waiting for them to inspect of our facilities.

In the meantime, we are sharing our proposed plan with Parents:

Jabulane Christian Academy is planning to phase all learners back into school as follow:

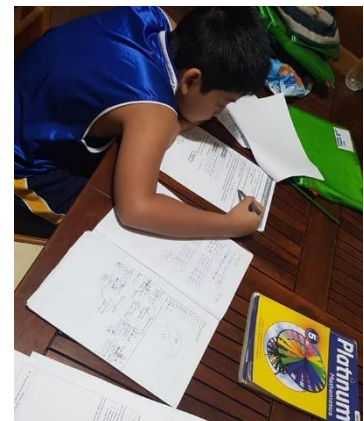
Phase 1	Mon 1 June 2020	Grade 3 & Grade 7
Phase 2	Mon 8 June 2020	Grade 2 & Grade 6
Phase 3	Wed 17 June 2020	Grade 1 & Grade 5
Phase 4	Mon 22 June 2020	Grade R & Grade 4

Phase 1: All learners in the Grade 7 group will be at School from Mondays to Fridays. The Grade 3 group will follow a rotational schedule which will be communicated with Parents during the course of this week.

Please note that this plan is still tentative and that the dates are subject to the confirmation from the Gauteng Department of Education as well as verification of Covid-19 readiness from both the Departments of Education and Health. We will confirm on Friday 29 May 2020 whether School will open next week.

REMOTE TEACHING AND LEARNING:

All grades waiting their turn to return to School will continue with Remote Teaching and Learning until classroom teaching resumes. Thank you to all the Parents who collected printed work for their children during the past two Tuesdays.



PROTOCOL FOR WHEN RETURNING TO SCHOOL:

School Hours:

School hours will be from 08:00 – 12:30. It is required that learners are fetched *immediately* after dismissal. This will allow time to clean facilities to be ready for the next day.

Personal Protective Equipment (PPE):

All Staff and learners will be required to wear **fabric/cloth** (non-medical) **face masks** and/or visors throughout the day. Masks should cover the nose and mouth. As JCA is a non-subsidised private school, the DBE will not provide us with any PPE. Parents are responsible for acquiring a mask and/or visor for their children before returning to school. These masks are available at several stores or can also be made at home providing that it has a *minimum of two layers, preferably three* and are made according to the prescribed National guidelines. Please try to obtain the mask a few days before your child will return to school and make them wear it at home to get used to it. Practice to put it on and take it off. We request that children's face masks are washed daily. Additional masks will be available from the School office for R20.

Transport:

Parents and Guardians are encouraged to transport their child/children to school where possible or alternatively check that the public transport service provider is adhering to the regulations issued in terms of the Disaster Management Act 2002. We request that children be collected immediately after school to minimise the risk of transmission after school. If you hire transport to bring your child to school, please make sure that the operator **KNOWS** and **COMPLIES** with the following:-

1. All learner transport operators must provide you with their disinfection information materials and procedures, as well as any permits that they are required to have.
2. Operators must ensure that all learner transport vehicle door and window handles, armrests and handrails are sanitised before picking up and dropping off learners.
3. Social distancing regulations must be complied with according to the vehicle's particular capacity.
4. There should be no hugging, touching or bumping between learners while in the transport vehicles.
5. All drivers and learners must wear a mask.
6. Drivers should ensure that learners must sanitise their hands before getting into and out of transport. The sanitisers used to sanitise all learner transport vehicles must have a minimum of 70% alcohol content.

Arrival at School:

Upon arrival, all learners and staff will be temperature screened, hands will be sanitised, and masks will be checked. Learners will only gain access if proper masks are worn. No mask, no entry. Learners or staff who record a fever will not be allowed to attend the school day. The School will contact Parents to fetch a learner with a temperature immediately, to be tested for Covid-19. The learner or staff member may only return to school after submitting a medical certificate, testing negative for Covid-19.

VERY IMPORTANT: If you notice that your child has a fever or shows symptoms of covid-19 at home, do not send him/her to school. Please first consult with a doctor or get your child tested. Report any suspicious COVID 19 symptoms or confirmed cases immediately to the School Office.

Key Principles to be Exercised at School:

- Keeping a physical distance of 1.5m as far as practical.
- No hugging, handshaking and direct contact will be allowed.
- Hand hygiene and hand washing protocols will be exercised when entering or exiting any room.
- Face masks and/or visors will be permanently worn.
- Cough and sneeze etiquette practices must be observed.
- Classrooms/venues will be appropriately cleaned at regular times and disinfected as required.

- No sharing of any items such as books, stationary, food or utensils will be allowed.
- Teachers will transition between classrooms; learners will remain in the same class throughout the day.

Preparing Your Child Before Returning to School:

Parents have always been valued part of the team to support each child. Thank you for working even more closely together during the past months. We request that you as Parent continue to make sure your child understands what Covid-19 is and how it is spread. A folder titled "Covid-19 Resources" is available on D6 Connect where some presentations and songs have been posted. These documents will hopefully aid in explaining the virus to children. Please enforce good hygiene practices such as washing and sanitising of hands, coughing or sneezing into a tissue paper or bent elbow at home, to make children used to these practices.

Learner Orientation:

An orientation and training programme will be implemented for all learners on their return to school. During the orientation programme, the School will also address the matter of avoiding any stigmatisation after testing positive to the COVID 19.

Psychosocial Support:

School Staff will do the best we can to assist all learners experiencing any social and emotional difficulties as a result of COVID 19. Biblical counselling will be available when needed.

Parents and Visitors to School:

Parents and drivers may not enter the school premises and will drop learners at the School Gate. For the time being telephonic calls or email will be the method of communication. In person meetings will only be scheduled if absolutely necessary and by appointment only. Screening procedures will be followed by all visitors and parents/guardians who need to enter the School premises.

It will be impossible to eliminate *all* risk, but we can assure you that our Staff is fully committed to doing the best we can to keep your child safe. The health of all staff and learners is our primary priority, and we will do all we can to ensure that we stringently follow all protocols. Strict Covid-19 rules will be in place with immediate disciplinary action for the breaking of any health and safety rules.

Trusting to see each other soon,



Anine Bonthuys
Principal

Waiver: The information in this letter was correct at the time of publishing. Because implementation of lockdown rules is subject to change, Jabulane Christian Academy will adjust accordingly.