



# FAIR MATE®

Mfg. The complete range of  
**construction chemicals**

An ISO 9001, ISO 14001 & ISO 45001 Certified Company



## FAIRMATE CONCRETE FINISH

# FAIRMATE CONCRETE FINISH

## Introduction

As the common material, concrete shows one of the most essential beauties, with the natural appearance of calm charm. Material itself has a soft feel, rigid sense of warmth with cold, so architects believe that this is a noble simplicity, seem to be simple but more than magnificent effect.

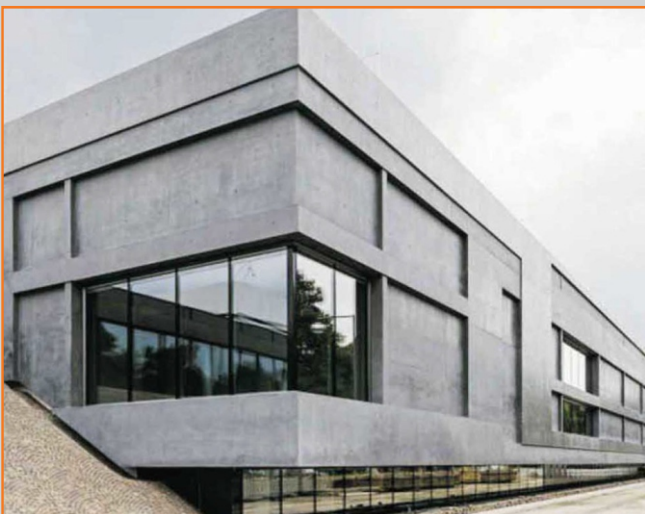
Concrete, of course, is a popular building material that creates a distinctive architectural style that make many people like, but a good impression can be spoiled if there are too many pores on what was supposed to be smooth surface. It's impossible to avoid pores in concrete. The material can behave unpredictably, which mean the size and number of pores may vary, there can be overlapping joints, shuttering undulations and marks which makes it worst.

If we overcome all above factors & develop working skills & technique to control the behavior of the concrete, no wonder it will help to achieve the architect's vision.



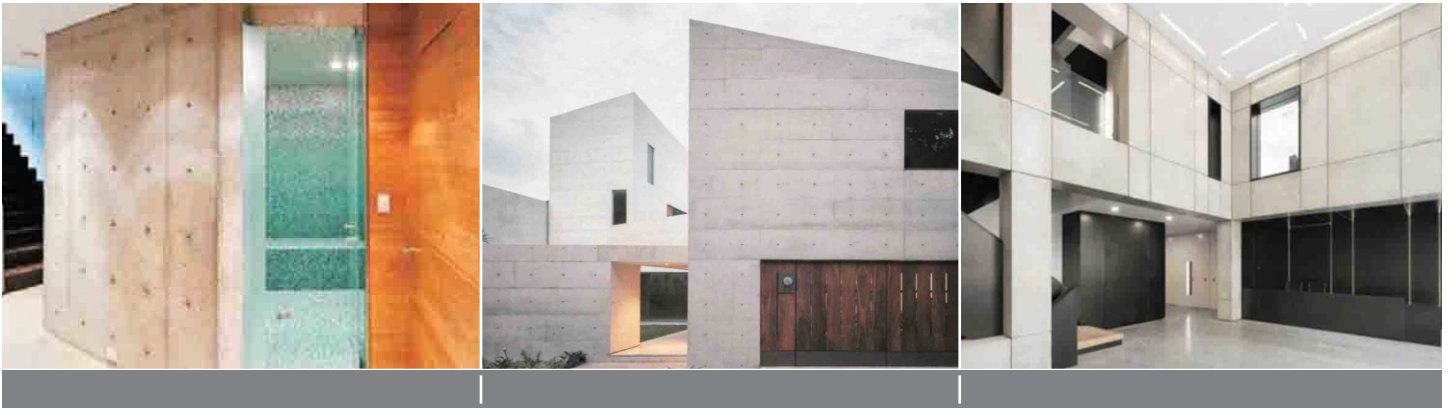
## Advantages

- > Available in various patterns
- > Free of ugly shuttering joints
- > Fungus & algae resistance
- > For interiors & exterior
- > Leveled & smooth
- > Dirt & dust resistant
- > Excellent weathering properties





## FAIRMATE CONCRETE FINISH



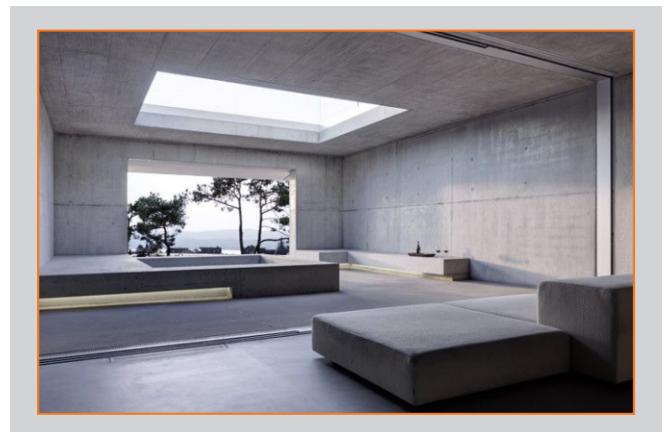
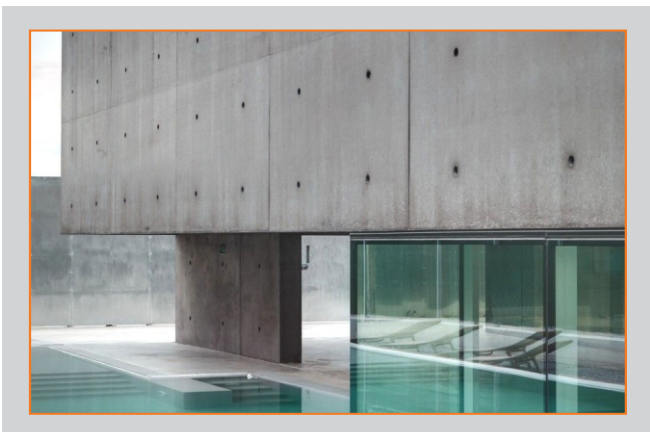
### FAIRMATE CONCRETE FINISH

Finishing techniques can play revolutionary & economical way to change colors & visuals. We observed that the visual concrete can be used as stylish element, specially in the luxury or prestige sector of architecture whether for singly family house, hotel or company headquarter. Whether it be the exterior, interiors, bedrooms, stairs, washrooms, living, dining rooms, floors, walls, ceilings. FAIRMATE CONCRETE FINISH is applied with a thickness of 3-12 mm.

**FAIRMATE CONCRETE FINISH** speaks about the emotion of the building and reflects sophisticated life style

**FAIRMATE CONCRETE FINISH** is a modern system comprising cement, hardest earthen material, polymer and special additives, modern technology, special tools and workmanship. It is a unique methodology to present concrete which is beautiful and withstands against the external weather calamities.

FAIRMATE CONCRETE FINISH is an effort to put into frame, the ideas of architects and designers to allow the concrete look fascinating and dramatic on walls, ceilings and floors, without compromising the strength and durability inherent in it.



# FAIRMATE CONCRETE FINISH

Inspired by the aesthetic values of the concrete, our dedicated efforts has helped us to present it in various manners and styles, from fresh to antique looks, matt to glossy or minor effects and many other customized look.

## PATTERNS



Smooth



Honey Combed



Trowel Marked

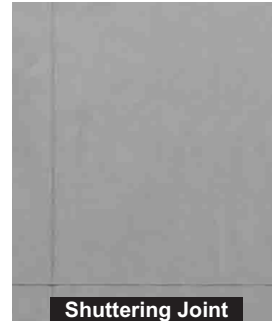


Rough Cast

## GROOVES



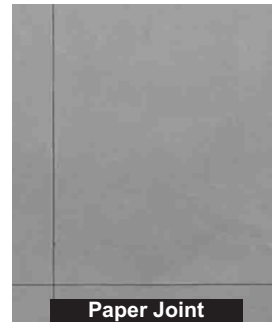
V Grooved



Shuttering Joint



Grouted Joint



Paper Joint



## COLOURS



Light Tone



Mid Tone



Dark Tone



Black

## APPEARANCE



Fresh



Antique



Wet



Grooved



# FAIRMATE CONCRETE FINISH

## Technical Properties

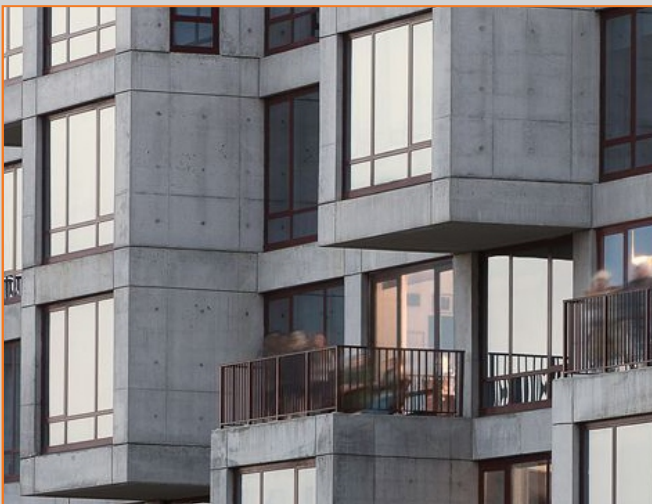
- > Water Absorptions %) : 3.23
- > Scrub resistance : >500 cycles
- > Slip & Mar resistance : >500 cycles
- > Wet transverse strength : 4.5 N/mm<sup>2</sup>
- > Wear resistance : 2.5 - 2.9 mm





# FAIRMATE CONCRETE FINISH

## Areas of Application







**FAIRMATE CHEMICALS PVT. LTD.**  
8, "SAI SUDHA",  
Arunoday Society, Alkapuri  
Vadodara 390 007. Gujarat, India



+91 265 2331193, 2358173, 2330803



[sales@fairmate.com](mailto:sales@fairmate.com)



[www.fairmate.com](http://www.fairmate.com)

**TOLL FREE : 1800 12345 34**