

WEEK 5 – Downward Facing Garter St Chevron Pat and Entrelac Final Triangles

ABBREVIATIONS

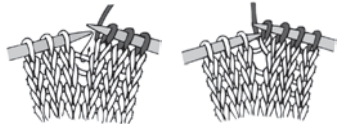
Dec = Decrease(ing)

K = Knit

Kfb = Increase 1 stitch by knitting into front and back of next stitch

K2tog = Knit next 2 stitches together

M1 = Make 1 stitch by picking up horizontal loop lying before next stitch and knitting into back of loop.



P = Purl

Pat = Pattern

Psso = Pass slipped stitch over

P2tog = Purl next 2 stitches together

Rem = Remaining

Rep = Repeat

RS = Right side

Tog = Together

Sl1 = Slip next stitch knitwise

Ssk = Slip next 2 stitches knitwise one at a time. Pass them back onto left-hand needle, then knit through back loops together

St(s) = Stitch(es)

WS = Wrong side

INSTRUCTIONS

Notes:

- This week begins with 198 sts on your needles.
- Upward Facing Garter St Chevron Pat worked over 198 sts – multiple of 22 sts.
- Carry color when not in use loosely up side of work unless otherwise stated.
- Place st markers between each set of decreases, moving them up each row as you work, for easier counting.
- Final Triangles worked over 99 sts - multiple of 11 sts.

DOWNWARD FACING GARTER ST CHEVRON PAT

See chart on page 2.

1st row: (RS). With B, *Kfb. K8. K2tog. ssk. K8. Kfb. Rep from * to end of row.

2nd row: Knit.

3rd and 4th rows: With C, rep 1st and 2nd rows.

5th and 6th rows: With A, rep 1st and 2nd rows.

7th row: (RS). With B, *Kfb. K8. K2tog. ssk. K8. Kfb. Rep from * to end of row.

8th row: Purl.

9th and 10th rows: With C, rep 7th and 8th rows.

11th to 12th rows: With A, rep 7th and 8th rows.

Last 12 rows form Downward Facing Garter St Chevron Pat.

Rep 1st to 12th rows twice more, then rep 1st to 6th rows once.

ENTRELAC FINAL TRIANGLES

1st row: (RS). With C, K10. ssk. **Turn.**

2nd row: P11. **Turn.**

3rd row: K2tog. K8. ssk. **Turn.**

4th row: P10. **Turn.**

5th row: K2tog. K7. ssk. **Turn.**

6th row: P9. **Turn.**

7th row: K2tog. K6. ssk. **Turn.**

8th row: P8. **Turn.**

9th row: K2tog. K5. ssk. **Turn.**

10th row: P7. **Turn.**

11th row: K2tog. K4. ssk. **Turn.**

12th row: P6. **Turn.**

13th row: K2tog. K3. ssk. **Turn.**

14th row: P5. **Turn.**

15th row: K2tog. K2. ssk. **Turn.**

16th row: P4. **Turn.**

17th row: K2tog. K1. ssk. **Turn.**

18th row: P3. **Turn.**

19th row: K2tog. ssk. **Turn.**

20th row: P2. **Turn.**

21st row: K2tog. ssk. Pass 2nd st from right-hand needle over first st and off needle. **Do not turn.** Break C. Join B.

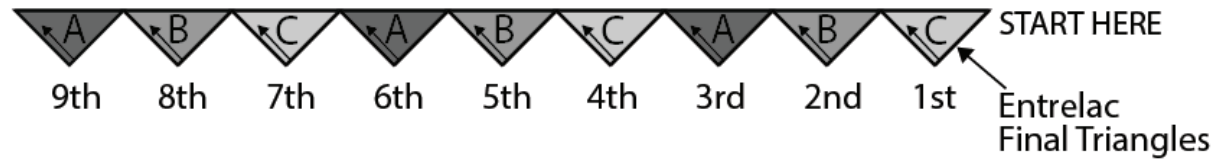
Rem st on right-hand needle counts as first knit st of next Triangle.

With appropriate color (see diagram on page 2), rep 1st to 21st rows 7 times more then 1st to 20th rows once.

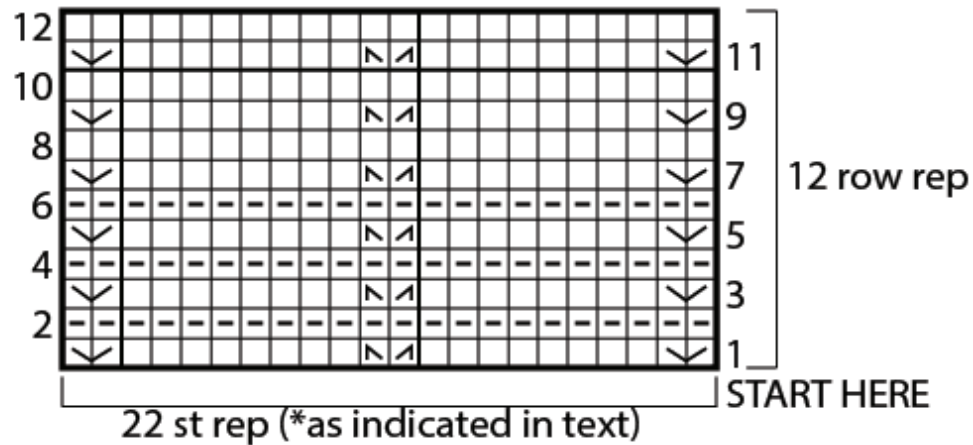
Next row: Sl1. K2tog. psso.

Fasten off rem st. See you next week!

ENTRELAC FINAL TRIANGLES



DOWNWARD FACING GARTER ST CHEVRON PAT



KEY

- = Knit on RS rows. Purl on WS rows.
- ▢ = Knit on WS rows.
- ▣ = ssk
- ▤ = Kfb
- ▥ = K2tog