

Overview

- ❖ Activity Recap
- ❖ HHS Survey Reporting – Improvement Opportunities
- ❖ EMResource Solutions
- ❖ Questions and Answers
- ❖ Live View (time permitting)

2020 COVID-19 Data Reporting in Oklahoma

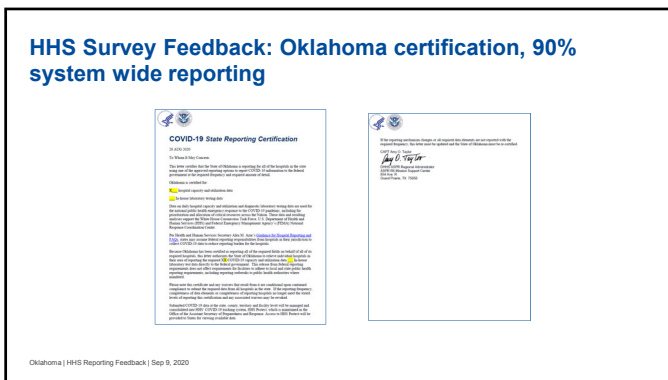
- Mar 18 EMResource COVID data collection initiated
- Jul 13 HHS memo on daily COVID reporting processes
 - ▶ OSDH begins process to allow for EMResource reporting to TeleTrack (funding, contract modifications, software programming, etc)
- Aug 1 HHS memo revising PPE reporting frequency
- Aug 4 EMResource training I
- Aug 5 EMResource data collection/submission to HHS launched
- Sep 3 EMResource training II
- Sep 9 EMResource training II (repeat)

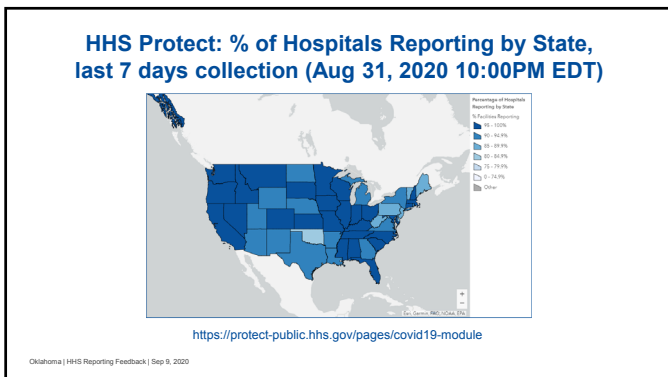
Oklahoma | HHS Reporting Feedback | Sep 9, 2020

HHS Hospital Survey Reporting Feedback

- ❖ Overall
- ❖ Certification requirement
- ❖ Data Fields for improvement







HHS Survey Feedback: Data Fields for Improvement < 82% reporting

- All hospital inpatient beds
- All hospital inpatient bed occupancy
- Adult ICU beds
- Adult ICU bed occupancy
- Total hospitalized adult suspected or confirmed positive COVID patients
- Hospitalized adult confirmed-positive COVID patients
- Total ICU adult suspected or confirmed positive COVID patients
- Hospitalized ICU adult confirmed-positive COVID patients
- Previous day's adult admissions with confirmed COVID-19
- Previous day's adult admissions with suspected COVID-19
- Previous day's adult admissions with confirmed or suspected COVID-19 by age bracket
- Current Inventory of Remdesivir
- On hand supply of N95 respirators
- On hand supply of eye protection including face shields and goggles
- On hand supply of single-use gowns
- On hand supply of exam gloves

Oklahoma | HHS Reporting Feedback | Sep 9, 2020

EMResource Solutions

- ❖ Identify ONE methodology
- ❖ Do not leave "--" unattended
- ❖ Data Input Logic Alert – do not ignore it
- ❖ Resource Validation Report
- ❖ Event notification
- ❖ HHS survey versus Oklahoma survey

EMResource Solutions: Data Submission Methodology

Pick ONE – The latest upload will override the other



Oklahoma | HHS Reporting Feedback | Sep 9, 2020

EMResource Solutions: Resource Validation Report

Click - it will take you directly to the data field to be corrected

Oklahoma | HHS Reporting Feedback | Sep 9, 2020

EMResource Solutions: Event Notification

Event notifications: you can adjust for custom-fit!

Oklahoma | HHS Reporting Feedback | Sep 9, 2020

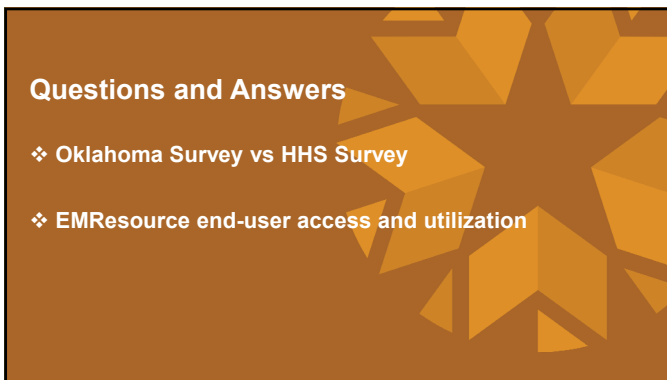
EMResource Solutions: Separate but Necessary

HHS Survey vs Oklahoma Survey

Auto-populating fields
Due at 12 noon daily

Oklahoma | HHS Reporting Feedback | Sep 9, 2020





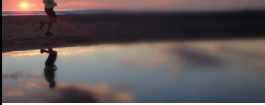


In Summary ...

- ❖ HHS Survey Reporting – Improvement Opportunities
- ❖ EMResource Solutions
- ❖ Questions and Answers
- ❖ Live View (time permitting)

You are not able to always control
what goes on in your outer world,
but you can always control what
goes on in your mental world.

Roxanne Jones



*Thank you for your attention, and taking the time
to join us today.*

*Thank you to the Oklahoma Hospital Association
for your continuous partnership to support
hospitals in meeting this HHS Request.*

For information or inquiries:

Oklahoma State Dept of Health
PHS – Emergency Systems
1000 Northeast 10th Street,
Oklahoma City, OK 73117
Telephone (405) 271-4027
Fax (405) 271-4240
EMResource@health.ok.gov