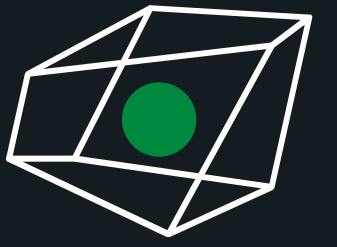
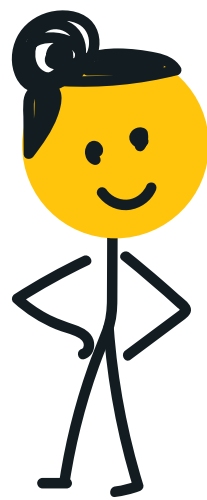


What is OpenTelemetry?



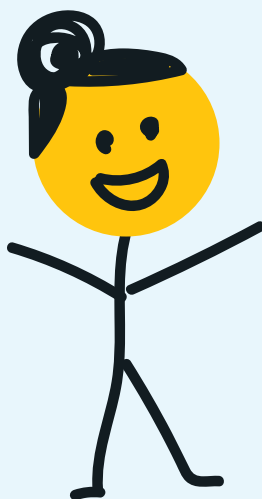
A comic

How long is
my_program
taking?



```
my_program() {  
  ...  
}
```

I got it!!!
I'll instrument
my code!

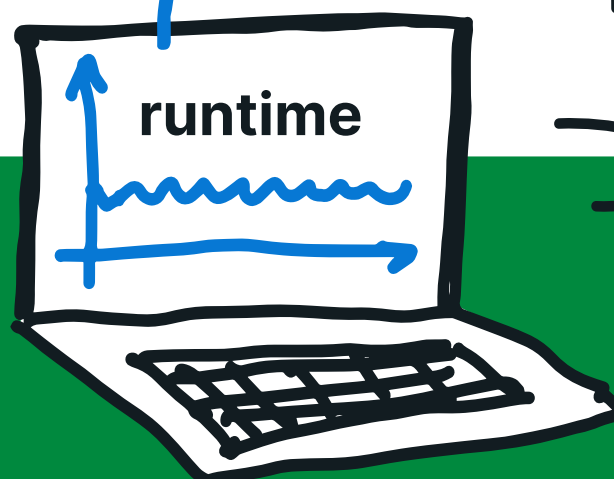


```
my_program() {  
  vendor.Metric  
    ("runtime", 30  
  )  
  ...  
}
```

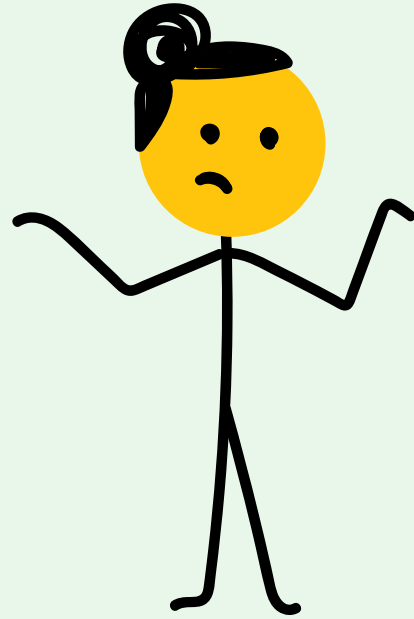
Vendor stores
metric and provides
tools to view later

vendor

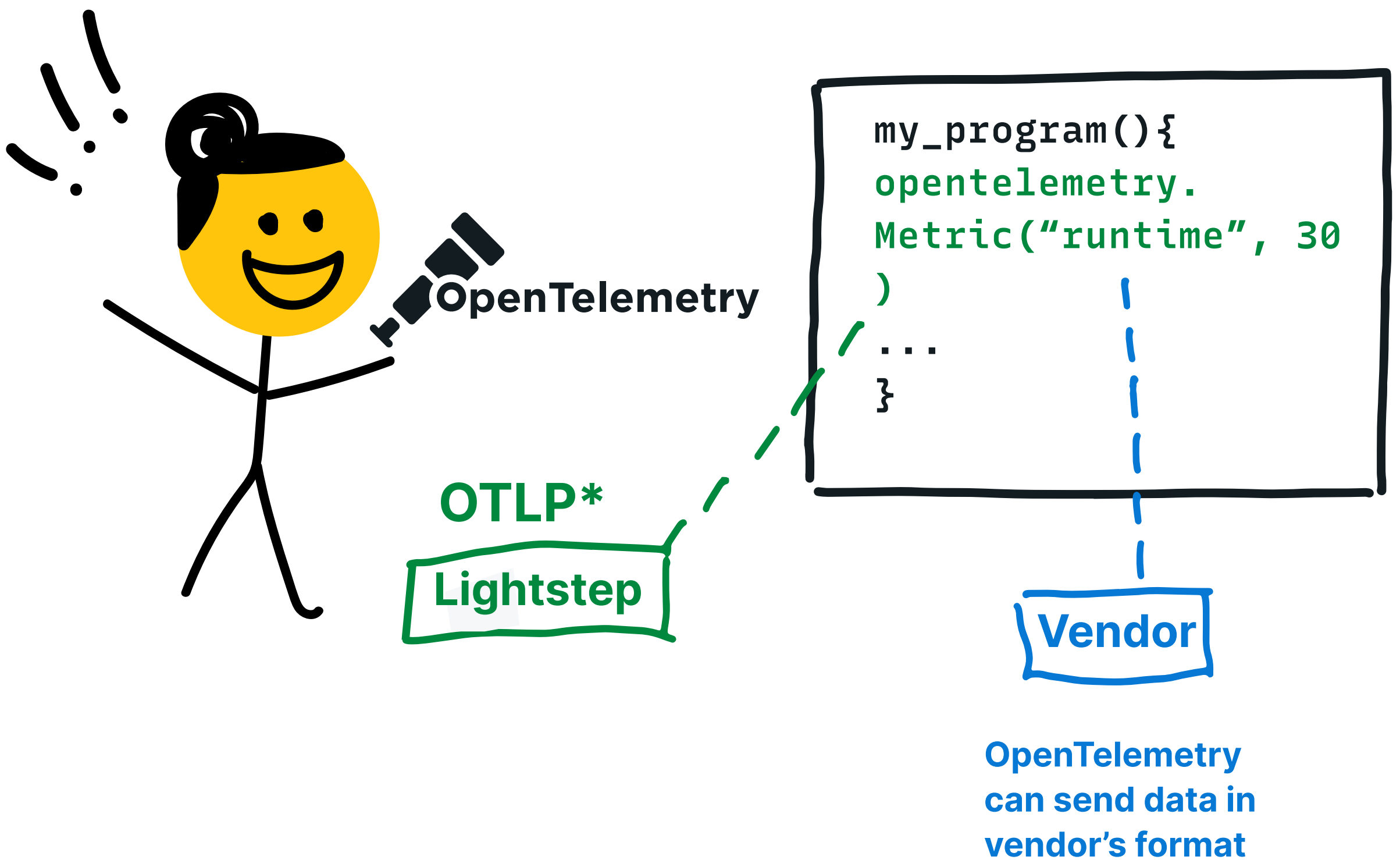
Sends "runtime"
data to vendor in
vendor's format



But what if
I want to
stop using
vendor?

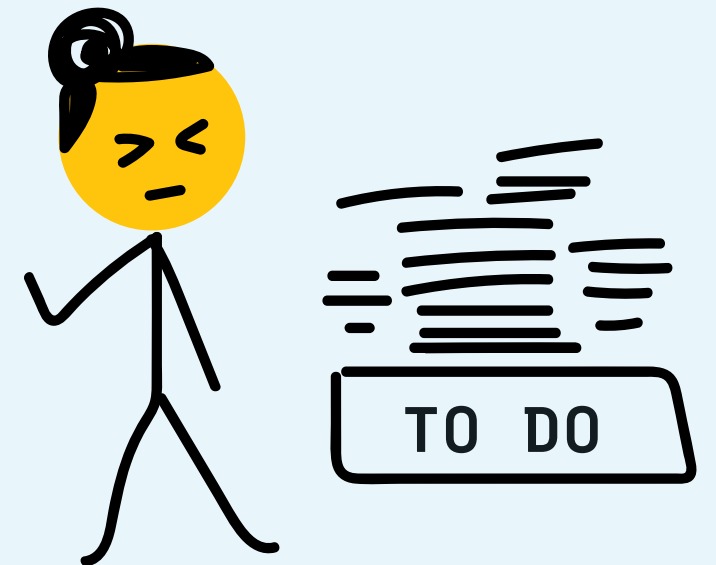


...or even just
try **vendor 2** to
see if I like it
better?"



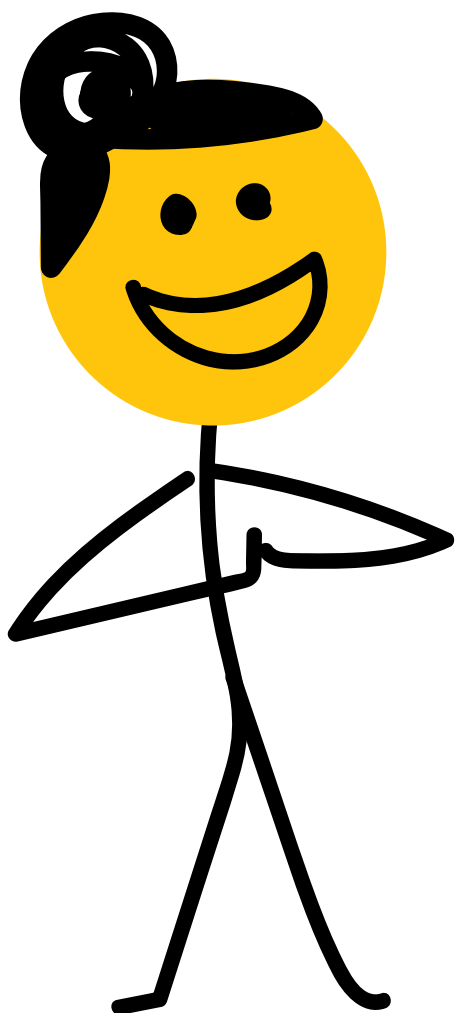
* OpenTelemetry includes an
Open Source built in data format
called "OTLP".

But wait ... adding all of this instrumentation seems like a LOT of work.

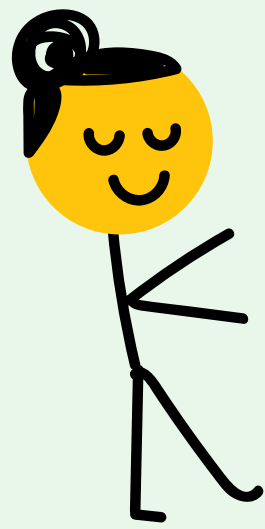


```
my_program(){  
  http_library.serve()  
  ...  
}
```

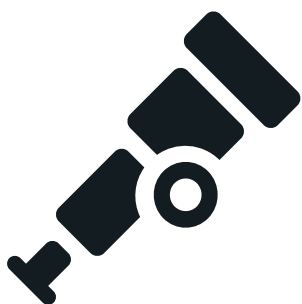
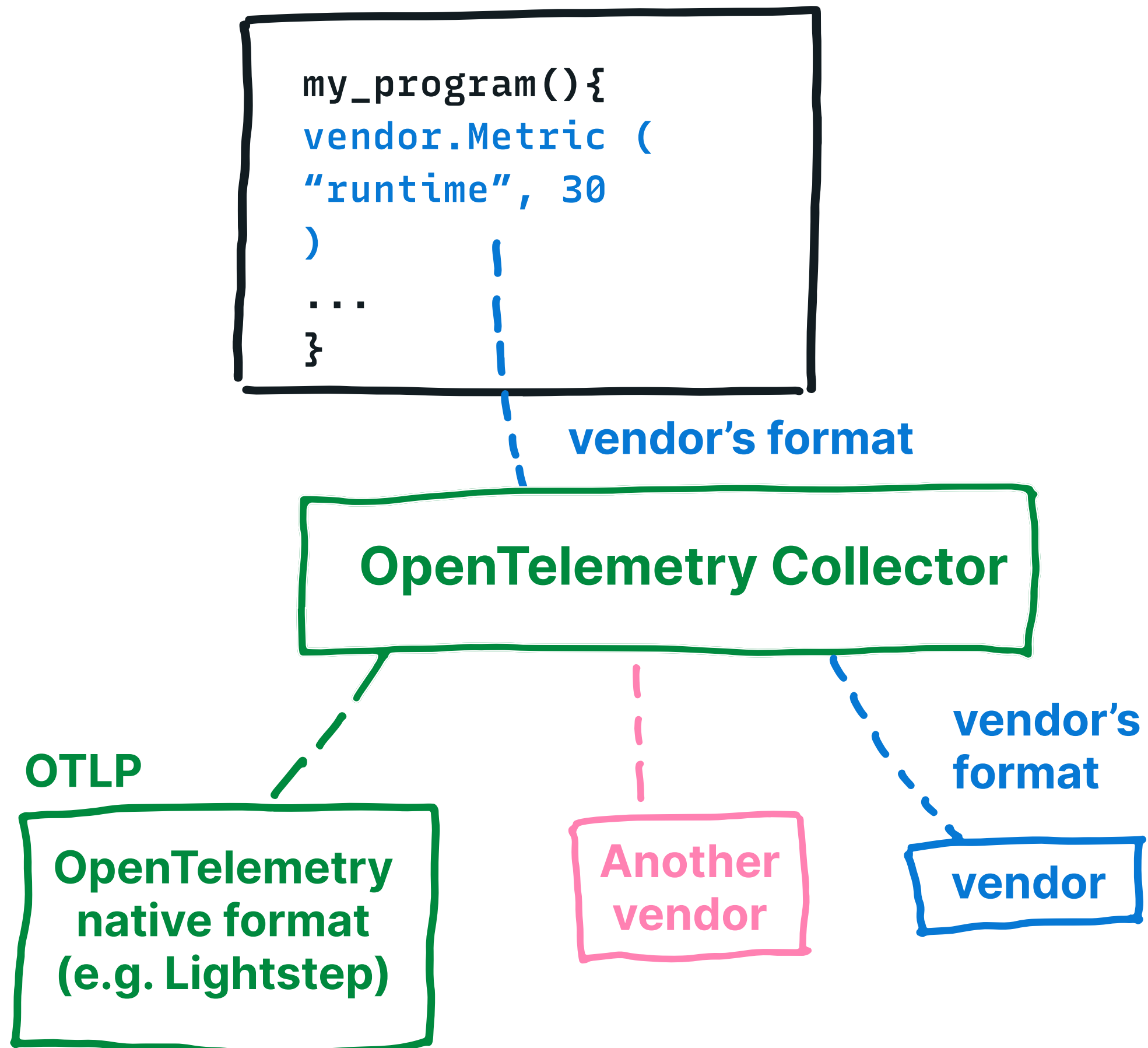
```
"http.library code  
opentelemetry.metric  
("response_time", 10  
)
```



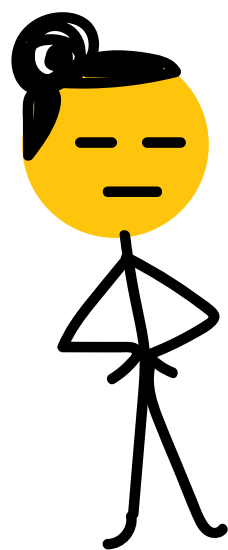
OpenTelemetry includes **built-in instrumentation** for dozens of popular libraries and frameworks so now you can get started without writing any code!!



I already have a
lot of code
instrumented
using **vendor**



**OpenTelemetry collector
accepts data in many formats
and translates it to “OTLP”
or to many other formats!**



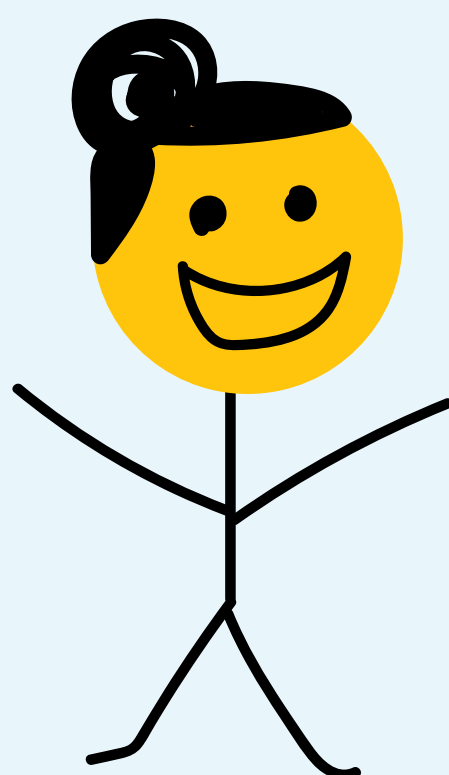
**Who controls
OpenTelemetry?
Should I trust it?**

**OpenTelemetry has
contributors from over
150 organizations!**

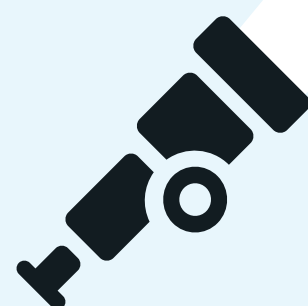


The OpenTelemetry governance board = vendor neutral!

The board includes people from many different organizations. No vendor has a majority of members to ensure the project remains vendor-neutral.



**Where can I
learn more?**



<http://opentelemetry.io>
<https://otel.lightstep.com>

This comic made with ❤️ by Lightstep