

# North Pole Express

Quilt Design by Cyndi Hershey



Quilt size: approximately 56" x 56"

North Pole Express  
by Pela Studio  
for P&B Textiles



P&B Textiles • pbtex.com • 800-351-9087 • 208 Clock Tower Square, Portsmouth, RI 02871

# North Pole Express

Fabric collection by Pela Studio for P&B Textiles

Quilt design by Cyndi Hershey

Skill level: Advanced Beginner • Finished Quilt Size: approximately 56" x 56"

## Quilt Yardages:

Fabric A: <b>NPEX 4759 PA</b> .....	1 panel
Fabric B: <b>NPEX 4762 R</b> .....	5/8 yard
Fabric C: <b>NPEX 4763 DR</b> .....	1 1/8 yards
Fabric D: <b>NPEX 4764 K</b> .....	2/3 yard
Fabric E: <b>NPEX 4765 E</b> .....	1 1/4 yards
Fabric F: <b>NPEX 4765 G</b> .....	5/8 yard
Fabric G: <b>NPEX 4766 NE</b> .....	1/4 yard
Backing: <b>NPEX 4767 NE suggested</b> .....	3 3/4 yards
Batting: .....	64" x 64"

## Cutting Instructions:

Please read all instructions carefully before beginning. Strips are cut across the width of fabric (perpendicular to selvages) unless otherwise stated. All seams are sewn with a 1/4" seam unless otherwise stated. Label all pieces.

### From Fabric A:

1. Cut large block 20 1/2" x 20 1/2" centering design.
2. Cut four small blocks 10 1/2" x 10 1/2" centering design within each one.

### From Fabric B:

1. Cut seven 2 1/2" strips. (Binding)

### From Fabric C:

1. Cut six 1 1/2" strips. Sew strips together end to end with diagonal seams. Press seams open. From pieced strip, cut two 1 1/2" x 54 1/2" strips and two 1 1/2" x 56 1/2" strips. (Outer Border)
2. Cut nine 1 3/4" strips; subcut sixteen 1 3/4" x 3" rectangles, sixteen 1 3/4" x 5 1/2" rectangles and sixteen 1 3/4" x 8" rectangles. (Courthouse Steps Blocks)
3. Cut one 2 1/2" strip; subcut eight 2 1/2" squares. (Green Star Blocks)
4. Cut two 3 1/4" strips; subcut sixteen 3 1/4" squares. Cut each square diagonally in both directions to yield sixty-four quarter-square triangles. (Red Star Blocks)

### From Fabric D:

1. Cut three 6 1/2" strips; subcut sixteen 6 1/2" squares. (Pieced Border)

### From Fabric E:

1. Cut eleven 3 1/4" strips; subcut sixteen 1 3/4" x 5 1/2" rectangles, sixteen 1 3/4" x 8" rectangles and sixteen 1 3/4" x 10 1/2" rectangles. (Courthouse Steps Blocks)
2. Cut four 2 1/2" strips; subcut sixty-four 2 1/2" squares. (Red & Green Star Blocks)

3. Cut two 3 1/4" strips; subcut sixteen 3 1/4" squares. Cut each square diagonally in both directions to yield sixty-four quarter-square triangles. (Red & Green Star Blocks)

### From Fabric F:

1. Cut four 1 1/2" strips; subcut two 1 1/2" x 40 1/2" strips and two 1 1/2" x 42 1/2" strips. **Note:** if you cannot cut 42 1/2" strips, cut another 1 1/2" strip and sew three strips together with diagonal seams. Use this pieced strip to cut two 1 1/2" x 42 1/2" strips.
2. Cut one 2 1/2" strip; subcut eight 2 1/2" squares. (Red Star Blocks)
3. Cut one 3" strip; subcut eight 3" squares. (Courthouse Steps Blocks)
4. Cut two 3 1/4" strips; subcut sixteen 3 1/4" squares. Cut each square diagonally in both directions to yield sixty-four quarter-square triangles. (Green Star Blocks)

### From Fabric G:

1. Cut two 3 1/4" strips; subcut sixteen 3 1/4" squares. Cut each square diagonally in both directions to yield sixty-four quarter-square triangles. (Red & Green Star Blocks)

## Piecing Instructions:

### Courthouse Steps Block

**Note:** Press all seams away from the center square.

1. Sew one 1 3/4" x 3" C rectangle to both sides of one 3" F square. Sew one 1 3/4" x 5 1/2" E rectangle to remaining sides of the F square.
2. Sew one 1 3/4" x 5 1/2" C rectangle to both sides of the Step 1 unit on the same sides as the previous C rectangles. Sew one 1 3/4" x 8" E rectangle to remaining sides of the unit.
3. Sew one 1 3/4" x 8" C rectangle to both sides of the Step 2 unit on the same sides as the previous C rectangles. Sew one 1 3/4" x 10 1/2" E rectangle to remaining sides of the unit. Repeat to make eight blocks. (Figure 1)

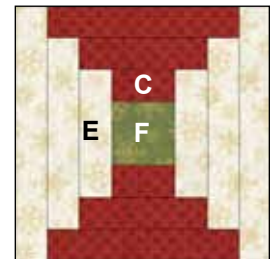


Figure 1 Make 8.  
10 1/2" x 10 1/2"  
unfinished.

### Star Block

1. Sew one 3 1/4" C triangle to one 3 1/4" E triangle on the short sides. Press toward C. Sew one 3 1/4" C triangle to one 3 1/4" G triangle. Press toward C. Sew both halves together to complete one quarter-square-triangle unit. Repeat to make thirty-two units. (Figure 2)

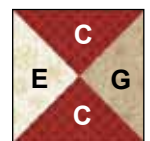


Figure 2  
Make 32.  
2 1/2" sq.  
unfinished.

2. Sew one 2 1/2" E square to the C sides of one Step 1 unit. Press toward E squares. Repeat to make two rows.
3. Sew the G sides of two Step 1 units to one 2 1/2" F square. Press toward F.
4. Sew one Step 2 row to both sides of one Step 3 row to complete one block. Press seams open or to one side. Repeat to make eight red star blocks. (Figure 3)

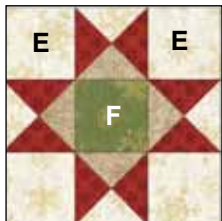


Figure 3 **Make 8.**  
6 1/2" sq." unfinished.

5. To make green star blocks: Repeat Steps 1-4 except use 3 1/4" F triangles for the star points and 2 1/2" C squares for the block centers. (Figure 4)

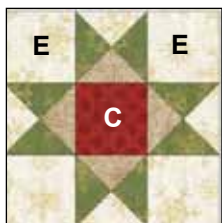


Figure 4 **Make 8.**  
6 1/2" sq." unfinished.

## Quilt Assembly:

1. Refer to quilt diagram to sew two Courthouse Steps blocks together. Press seam open or to one side. Repeat. Sew one set of blocks to both sides of the 20 1/2" A block. Press toward A.
2. Sew two 10 1/2" A blocks with two Courthouse Steps

blocks as shown for the top row. Pay attention to the direction of the print in the A blocks. Repeat for the bottom row. Sew rows to the center row made in Step 1. Press seams open or to one side.

3. Sew one 1 1/2" x 40 1/2" F strip to both sides of the center unit made in Step 2. Press toward F. Sew one 1 1/2" x 42 1/2" F strip to the top and bottom of the center. Press toward F.
4. Refer to quilt diagram to sew four 6 1/2" D squares alternately with two green star blocks and one red star block. Press toward (D) squares. Repeat. Sew one row to both sides of the center unit made in Step 3. Press toward the center unit.
5. Sew four 6 1/2" D squares alternately with three red star blocks and two green star blocks. Press toward D squares. Repeat. Sew one row to the top and bottom of the center unit made in Step 4. Press toward the center unit.
6. Sew one 1 1/2" x 54 1/2" C strip to both sides of the quilt. Press toward C. Sew one 1 1/2" x 56 1/2" C strip to the top and bottom of the quilt. Press toward C.

## Finishing:

1. Prepare backing using two widths. Press seams open. Trim to 64" x 64".
2. Layer quilt top, batting, and backing. Baste layers together.
3. Quilt as desired.
4. Trim layers even with quilt top squaring corners.
5. Join seven 2 1/2" B binding strips with diagonal seams. Press seams open. Attach binding using your favorite method.
6. Make a label and sew to the back of quilt.





*Quilt Diagram*

# North Pole Express

Fabric Collection  
by Pela Studio  
for P&B Textiles



NPEX 4759 PA\*



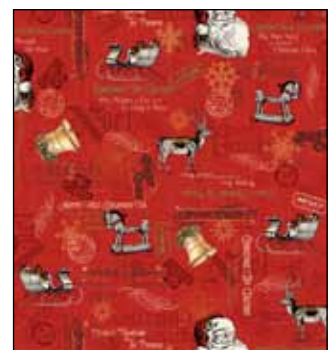
NPEX 4761 MU



NPEX 4760 PA



NPEX 4767 NE†



NPEX 4767 R



NPEX 4764 E



NPEX 4764 K\*



NPEX 4764 R



NPEX 4766 G



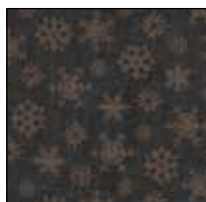
NPEX 4766 NE\*



NPEX 4765 E\*



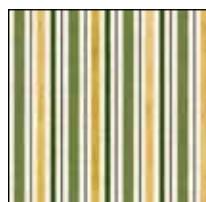
NPEX 4765 G\*



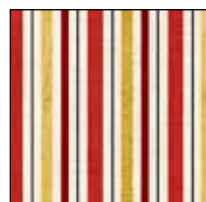
NPEX 4765 K



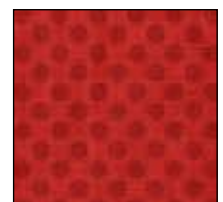
NPEX 4765 R\*



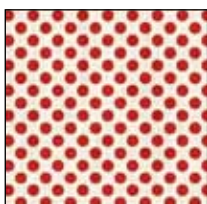
NPEX 4762 G



NPEX 4762 R\*



NPEX 4763 DR\*



NPEX 4763 LR



P&B Textiles • pbtex.com • 800-351-9087 • 208 Clock Tower Square, Portsmouth, RI 02871

\*Fabrics used in quilt or pillow

†Backing