



**Straps, Strips, Seals,
Pinchwelds, Extrusions, Tapes,
Cords & Channels**



Breakdown

PAR Australia offers a wide variety of Straps, Strips, Seals, Pinhwelds, Extrusions, Tapes, Channels & Cords to suit any application, from automotive and marine to industrial, construction, and general-purpose use. Our products are manufactured to high standards, ensuring durability, flexibility, and performance across a broad range of environments and operating conditions.

So this brochure will give you a breakdown of these products.

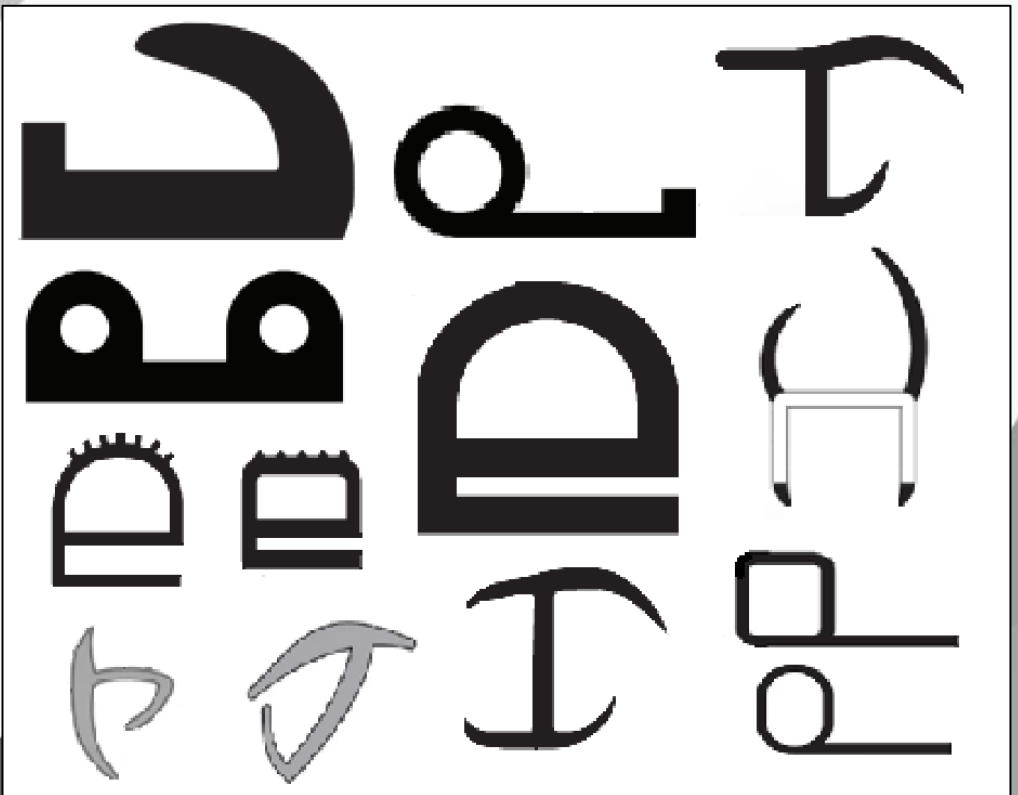
Strips

Rubber strips are flat lengths of rubber cut in various widths and thicknesses. They are used for padding, sealing, insulation, or protection. Strips can be made from EPDM, Neoprene, Nitrile, or Natural rubber depending on the application.



Seals

Rubber seals prevent leakage of air, water, dust, or chemicals between two surfaces. They're critical in weatherproofing, waterproofing, and ensuring airtight or watertight barriers. Seals can be static (non-moving) or dynamic (moving parts like shafts).



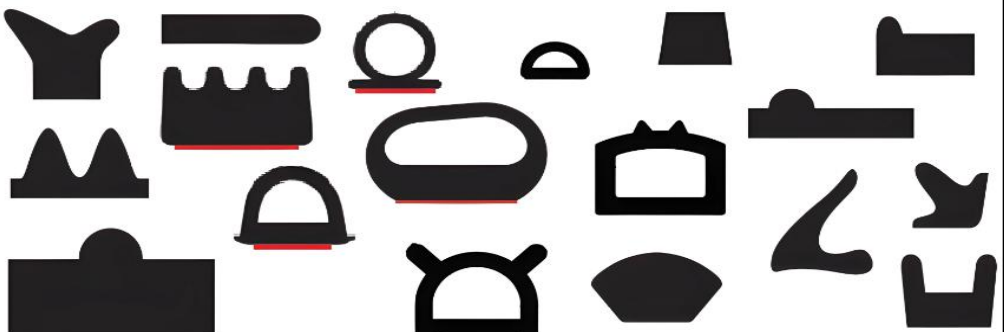
Pinchwelds

Pinchwelds are U-shaped rubber or plastic extrusions designed to fit over a metal flange or edge, commonly found around car doors, bonnets, and boots. They provide a protective, finished edge, and often include a built-in sealing bulb to create a weatherproof seal.



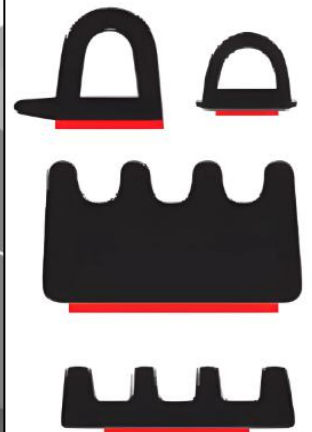
Extrusions

Rubber extrusions are continuous lengths of rubber shaped by pushing raw material through a die, creating a consistent cross-sectional profile. They can be solid or hollow and are widely used in sealing, insulating, and edge protection.



Tapes

Rubber tapes are rubber-based adhesives or foamed rubber with a sticky backing, used for sealing, joining, cushioning, or vibration dampening. They can be single-sided or double-sided and often come in rolls.



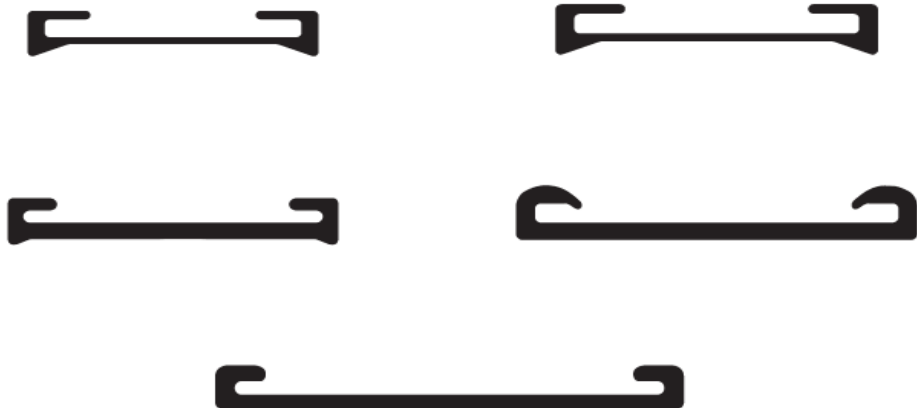
Channels

Rubber channels are U- or C-shaped extrusions used to grip or hold panels, glass, or edges. They provide cushioning, vibration resistance, and protection. Many have metal reinforcement or internal gripping fins.



Tank Straps

Tank straps are heavy-duty rubber or rubber-coated metal straps designed to secure fuel tanks, water tanks, or other cylindrical containers to a vehicle or fixed structure. In the rubber industry, tank straps often incorporate a rubber lining or padding to protect the tank surface from abrasion, corrosion, and vibration.



Sponge Cord

Sponge cord is a flexible, cylindrical length of soft, expanded rubber with a cellular (sponge-like) structure. Unlike solid rubber cord, sponge cord is lightweight and compressible, making it ideal for applications where soft sealing, cushioning, or insulation is required.



Contact Us:

919 Metry Street, North Albury, NSW, 2640

sales@paraaustralia.com.au

(02) 6025 0194

<https://paraaustralia.com.au/>

Opening Hours:

Monday: 8:00am – 4:00pm

Tuesday: 8:00am – 4:00pm

Wednesday: 8:00am – 4:00pm

Thursday: 8:00am – 4:00pm

Friday: 8:00am – 4:00pm

Saturday: Open by appointment only

