



# Vincent Buda & Co.

TRUST THE BUDA SINCE 1957



82-88 Benaroon Road,  
Lakemba, 2195 NSW



[www.buda.com.au](http://www.buda.com.au)



[sales@buda.com.au](mailto:sales@buda.com.au)

## Stainless Steel Shower Drains



**Vincent Buda & Co.** offers high-quality shower drains and floor waste, available in various patterns and sizes to suit any drainage need. Our easy-to-use online filters help customers find the perfect product by length, style, or outlet position. With 99% of items in stock and same-day dispatch for orders placed before 12 pm, we ensure fast, reliable service. Backed by **over 65 years** of experience, we are a trusted provider of both internal and external drainage solutions.

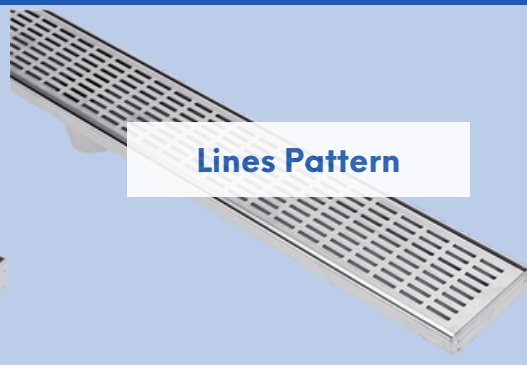
### Patterns



**Heelguard Pattern**



**Tile Insert Pattern**



**Lines Pattern**

- **Product Details:** All of the shower drains, made from 304 stainless steel, come in standard or custom lengths.
- **Design and Functionality:** To increase waterflow our bases have folds, except DIY and custom outlets with a pressed V base.
- **Style Heelguard** grates are 3mm Wedge Wire, available in 70mm, 85mm, and 100mm widths.
- **Outlet Options:** Various outlet positions for different widths. Customizable outlet sizes and positions available.

To learn more about these products, visit [www.buda.com.au](http://www.buda.com.au) or contact our office.



**Quality**



**Service**



**Expertise**

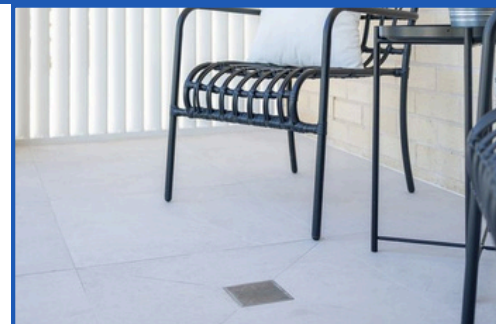
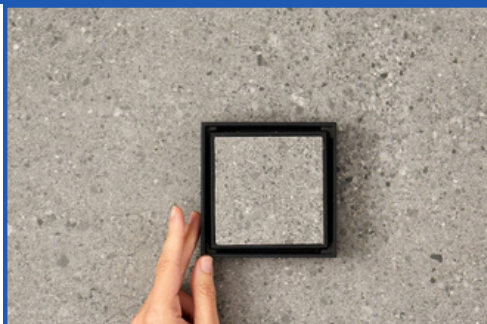


# Vincent Buda & Co.

TRUST THE BUDA SINCE 1957

82-88 Benaroon Road,  
Lakemba, 2195 NSW  
[www.buda.com.au](http://www.buda.com.au)  
[sales@buda.com.au](mailto:sales@buda.com.au)

## Floor Waste



- **Comprehensive Product Range:** Our extensive inventory includes bathroom floor wastes made from **stainless steel**, **plastic**, **chrome**, and **black stainless steel**, ensuring availability and style to match any requirement. For external drainage, explore our driveway grates, pit grates, and other products in aluminium, stainless steel, plastic, and galvanized steel.
- **Versatile Drainage Solutions:** Vincent Buda & Co. offers reliable grates and drains ideal for **internal drainage** applications, particularly in bathrooms, kitchens, laundries and showers. We provide both standard and custom configurations to meet diverse needs.

### Stainless Steel

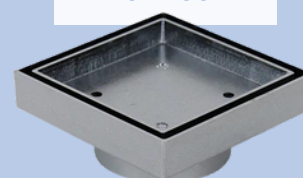
Tile Insert

Heelguard



### Chrome

Tile Insert



**Versatile Options:** Our popular stainless steel smart tile insert small floor wastes come in three different outlet sizes.

**Compact Design:** Overall depth of 24mm with a 12mm deep insert.

**Sleek and Discreet:** Achieve a hidden drain look with our smart tile insert floor wastes.

**Durability:** Wedge wire design with cross bars for durability and smooth water flow.

**Key Features:** Heel-safe, pet-friendly, with narrow gaps to block debris. Modern, stylish finish with edge bars to prevent sharp edges.

**Water Vanishes:** Bermuda Tile Insert Drain for a seamless look.

**Versatile Fit:** Available in two outlet sizes, fits 81.5mm tile insert, 80mm or 100mm pipe outlet, 28mm depth.

**High Quality:** Solid brass tile insert with chrome plate finish, includes a strainer (reduces flow rate).

To learn more about these products, visit [www.buda.com.au](http://www.buda.com.au) or contact our office.



Quality



Service



Expertise