



Newsletter

March 2025
Issue 07

Welcome

Welcome to the latest in our series of Newsletters that we will be publishing throughout the year in order to update on our activities and give you an opportunity to engage better with us.

CWCT Update

We reported in our last Newsletter that we had engaged with a research consultancy, Membership Matters, to help us better understand our Members and how we can best serve you.

The first part of the research, a survey, has now been completed. In total we had 700 responses, which is fantastic – thank you to all those who contributed. The next part of the research involves focus groups to help develop the initial findings. We hope to provide a further update on this soon.

Congratulations to John Downes who was presented with the SFE Lifetime Achievement Award recently. John has been involved with CWCT for over a decade – at Board level, playing a key role in the strategy of CWCT, and more recently leading our work in [sustainability](#), and was a key contributor to our [H&S guidance](#).

Congratulations also to our own Katie Cunningham, who won the best dissertation award for her dissertation titled 'Design for Disassembly and Reuse: A UK Methodology for Assessing the Disassembly and Reuse of Façade', as part of the MSc in Façade Engineering at UWE Bristol. Katie has recently joined our team to focus on our sustainability work.

Membership

My thanks to all of you who have paid your

Membership subscription for 2025. Without your support our work would not be possible.

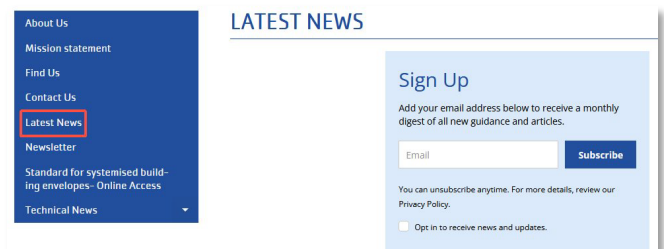
It is really important that you return your Confirmation of Records (COR) form with your subscription. We use this to ensure that we have up-to-date contact information so that you receive all of our communications. If your COR form has not been returned, I would be grateful if you could complete this and send it back to us.

A reminder that we have new Membership terms and conditions which are available to download via the [Cladding Forum](#). A new 'Member of CWCT' logo, and guidance on its use is also available.

Communication

Communication and the sharing information is really important. Please help to disseminate key CWCT updates within your organisation.

Please continue to regularly check the [Latest News](#) section of the CWCT website, which we use to share information. Please sign up for monthly updates straight to your inbox so you never miss an announcement.



Sign up for the latest news from CWCT

We also have a [LinkedIn Group](#) where we share relevant information. You can also [follow me](#) on



LinkedIn. Please help spread the word and promote the work of the CWCT by liking and sharing posts that we make.

CWCT Courses

We are pleased to announce that our [2025 programme](#) of short courses are now available to book.

Our courses were really well attended last year, providing training across a range of subjects and materials. A number of our courses are 'CPD Certified' by the CPD Certification Service, and we intend to certify the remaining courses this year.

In order to help demonstrate competency, delegates will once again be required to successfully complete a short assessment after each course in order to receive a CPD certificate.

We are keen to help address the challenges you face. If you have any suggestions for new courses that we could offer, please [contact us](#).

CWCT AGM and Members' Meeting

Recordings of our 2024 AGM presentations are now available via the [Cladding Forum](#).

Please save the date for our 2025 event – Thursday 25th September. Amongst other topics, we will be providing an update on the Building Safety Act. Further details will be available soon.

Gateway 2

One of the key takeaways from last year's AGM was that guidance was needed on Gateway 2 applications for high-risk buildings, under the Building Safety Act. It was clear that there are significant uncertainties about this process, and this appears borne out by number of applications that are being rejected.

We have responded to this challenge, working in collaboration with the SFE once again. In time, the ambition is to provide detailed guidance on Gateway 2 applications. However, before we can do this, we

need to better understand the reasons why applications are currently being rejected. To do this, **we need your help**. We need your feedback on rejected applications. We cannot do this on our own.

Based on the feedback received so far, we have published a list of reasons why recent applications have been rejected. The guidance is available [here](#) and is split into general reason and then specific reasons relating to the different parts of the building regulations, as shown below.

- + General
- + Part A
- + Part B
- + Part C
- + Part E
- + Part K
- + Part L

New guidance on Gateway 2 applications

This list is based on the best available information at the time and is not exhaustive. It is based on a very limited number of responses, and we really want to update this to make it as comprehensive as possible.

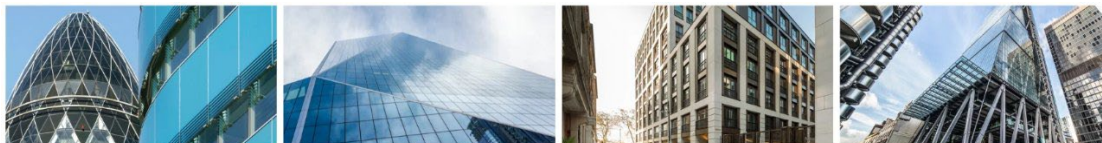
If you are able, please provide feedback [here](#). Alternatively send details to cwct@cwct.co.uk. **Please share this as widely as possible and encourage people to provide feedback. It is in everyone's interest to do this.**

CWCT Technical Notes

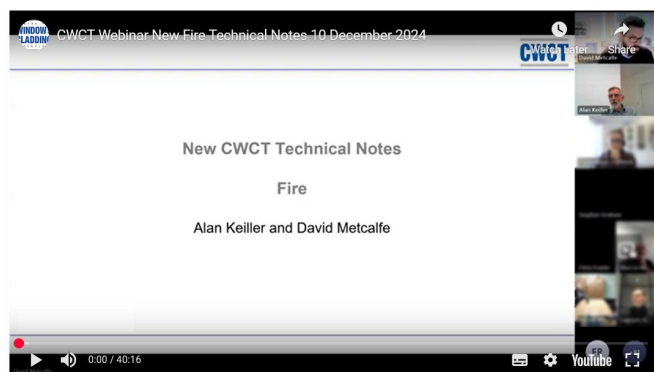
As reported in the last Newsletter, we have recently published two new Technical Notes on fire performance, with two more in preparation. We hope the newly published guidance is helping to clarify what remains a complex subject.

These documents are free to download for CWCT Members via the [Cladding Forum](#).

In order to help disseminate this new guidance, we held another [webinar](#) late last year, which is available to view via the website. We have also published an



article in the [CIBSE Journal](#). Sharing of key information is really important and we hope measures like these will help our guidance reach as many people as possible.



Our recent webinar to introduce our new fire Technical Notes

We had engaging meeting with our Technical Committee recently, and work is progressing on other Technical Notes, on subjects including breather membranes and vapour control layers, interfaces and brick slip systems.

Sustainability

We are very pleased to announce the publication of new sustainability guidance – ‘*Understanding EPDs: Guidance for the review and application of EPDs for façade products*’.

The guidance builds on the previous CWCT publication ‘*How to read an EPD*’ and provides an in depth look at EPDs; how the results are obtained, how they should be interpreted and applied, and reviews some of the common challenges associated with their use. EPDs provide vital data for embodied carbon calculations and therefore it is important to understand the assumptions that have been made, what they cover, and the limitations involved.

This is yet another complex area, and my thanks to all the Workstream members for their hard work and dedication putting this together.

This guidance is free to access for CWCT Members from the [Cladding Forum](#), and available to purchase for non-members [here](#).

Our other [sustainability workstreams](#) are all progressing well. We are working hard to conclude our existing work prior to starting anything new. We recognise that there is still much to do in the area, and if you have any ideas for future sustainability work topics, please email sustainability@cwct.co.uk.

Finally, a reminder about our [Sustainability Stories](#) platform. Again, this is an area where we need your help. Please consider submitting your own Story – this is an opportunity to highlight the fantastic work that we know many of you are doing in this area.

Thank you again for your continued support of CWCT. As always, if you have any comments on the work that CWCT are doing, [please get in touch](#).

David Metcalfe
Director
March 2025