

**IZUMI**

*intercable*

**novopress**



Hearthill  
Pty Ltd

**SHARK**  
KNOCKOUT PUNCH & DIES



**GREENLEE**  
A Tooltron Company

**DAIA**

**RIKEN**

**CEJN**

**DURAPAC**

## **Tools & Equipment for Switchboard Manufacturers**





## OVERVIEW

Specialised Force Pty Ltd has been operating and expanding throughout Australia since 1982. With the Head office in Sydney, the company now operates in Brisbane, Townsville, Darwin, Adelaide, Melbourne, Perth, Port Hedland and Hobart, with additional support distribution network covering all areas throughout Australia & New Zealand for over 40 years.



- **Established 1982**
- **Locations Australia Wide**
- **Australian Owned and Operated**

Specialised Force success rests on unique knowledge of specialised hydraulic, electrical tooling equipment and other products. This includes synchronised lifting systems, torque equipment, heat exchanger, pipe maintenance equipment and overhead/underground power installation equipment. We pursue a "complete system" approach and carefully match components to ensure efficient and safe operation of equipment. In order to transform this knowledge into solutions that meet demands in different industries, the company is organised into separate business areas

## FOCUSED BUSINESS AREAS



- **ELECTRICAL** - Overhead & Underground Power Installation Machinery & Equipment
- **RAIL** - Maintenance, Construction and Safety Equipment
- **MINING** - Jacking, Maintenance Tools & Tensioning Devices
- **OIL & GAS** - Flange Maintenance, Alignment, Spreading & Torque Tools
- **CIVIL INFRASTRUCTURE** - Bending, Crimping, Punching & Cutting Tools
- **INDUSTRIAL** - Heavy Load Lifting/Shifting, Maintenance & Safety Equipment
- **COMMUNICATIONS** - Drum Handling Equipment, Rollers & Winches
- **TRANSPORT** - Jacks, Presses, Pullers, Repair Kits & Torque Tooling
- **DEFENCE** - Heavy Load Lifting/Shifting

## OPERATIONAL COMMITMENTS

- **SAFETY FIRST** - Specialised Force strives to provide a safe, healthy work environment that stimulates customers and employees to perform effectively, to assume responsibility and to continue to develop towards company goals. Specialised Forces vision is for zero work-related injuries.
- **ENVIRONMENTAL RESPONSIBILITY** - Environmental consideration is a key element in our operations. We strive to prevent or minimize harmful effects on the environment.
- **DRIVEN BY CUSTOMER VALUE** - Where businesses are evolving – that's where you'll find Specialised Force. Our range of products and solutions are used by customers worldwide and by most industries. Specialised Force offers improved efficiency, productivity and safety, which in turn boosts profitability for customers.

## OUR VISION

- **Customers and partners** will see us as integral to their success. We will anticipate their needs and deliver on every commitment we make.
- **People** will be proud to work at Specialised Force. We will create opportunities to achieve the extraordinary and we will reward success.
- **Communities** will regard us as responsible and responsive. We will integrate local perspectives, promote sound management of resources, and contribute to a better quality of life

## OUR KEY VALUES

- 🏆 **EXCELLENCE** - We apply advanced technology and continually innovate and improve
- 🛡️ **SAFETY** - Zero accidents is our unwavering goal.
- 🤝 **FAIR RETURN** - We earn a return that fairly rewards the value we deliver
- ♻️ **SUSTAINABILITY** - We plan and act for the future - considering our company, our customers and our world
- 🤲 **ETHICS** - Uncompromising integrity, honest and fairness are at the heart of our company

## BATTERY CRIMPERS & DIES

CRIMPERS IN-LINE – BATTERY 5T & 6T	4
CRIMPER IN-LINE – BATTERY 12T	5
CRIMPER PISTOL – BATTERY 6T & 12T	6
CRIMPER LUNCH BOX – BATTERY 12 & 15T	7
CRIMPER REMOTE HEAD – 12 & 15T	8
CRIMPER REMOTE HEAD & DIES – 25T	9
DIES – 5T (SERIES 111)	10
DIES – 5T (CEMBRE)	11
DIES – 6T (ROUND)	12
DIES – 12T	13-14
DIE – "C" CONNECTOR & CUTTING – 12T	15-16

## CABLE CUTTING TOOLS

CUTTERS IN-LINE – BATTERY	17
CUTTERS RATCHET SCISSOR – BATTERY	18
CUTTERS RATCHET – BATTERY	19
CUTTERS PISTOL – BATTERY	20
CUTTERS LUNCH BOX – BATTERY	21

## MULTITOOLS & CONDUIT BENDERS

MULTITOOLS – BATTERY	22
MULTITOOL PISTOL – BATTERY 12T	23
MULTITOOL IN-LINE – BATTERY 6T	24

## PUNCHING TOOLS & ACCESSORIES

PUNCH KITS – HAND HYDRAULIC	25-26
PUNCH DRIVER – KNOCKOUT	27
PUNCH – BATTERY	28
PUNCH – HYDRAULIC REMOTE HEAD	29
PUNCH & DIES – KNOCK OUT	30
PUNCH & DIES – KNOCK OUT	31
PUNCH & DIES – SLUG SPLITTER & SLUG BUSTER®	32
PUNCH & DIES – SLUG BUSTER®	33
PUNCH & DIES – OILTIGHT & KEYWAY	34
PUNCH & DIES – "D" & DOUBLE "D"	35
PUNCH & DIES – SQUARE	36
PUNCH & DIES – RECTANGULAR	37
PUNCH & DIES – ELECTRONIC CONNECTOR	38
DRAW STUDS	39
DRAW STUDS, SPACERS & KEYWAY PUNCH	40

## DRILLING & TAPPING

DRILL & TAP COMBINATIONS	41
BITS – STEP	42

## CONDUIT, PIPE & TUBE BENDING

BENDER – PIPE, HYDRAULIC	43
--------------------------	----

## BUSBAR BENDING & FABRICATION

BENDING, CUTTING & FAB – BUSBAR	44
BENDING & FABRICATION – BUSBAR	45
BENDING & FABRICATION – BUSBAR	46
BENDING & FABRICATION – BUSBAR	47

## CABLE DRUM HANDLING & VOLTAGE DETECTING / MEASUREMENTS

METER – CABLE LENGTH & VOLTAGE DETECTOR	48
CABLE DRUM HANDLING – RAMP, TROLLEY & CADDY	49
CABLE DRUM HANDLING – LEVER & STANDS	50

## PUMPS & ACCESSORIES

HOSES – HIGH PRESSURE	51
HOSES & COUPLINGS – HIGH PRESSURE	52
PUMPS – HIGH PRESSURE, BATTERY	53
PUMPS – HIGH PRESSURE, BATTERY	54
PUMP ACCESSORIES – BATTERY 700/850 BAR	55
PUMPS – HIGH PRESSURE, ELECTRIC	56
PUMPS – HIGH PRESSURE, ELECTRIC	57

## REFERENCE TABLES

REFERENCE TABLES	58
------------------	----

## NEW INLINE 18V IZUMI 7 SERIES INLINE CRIMPERS



### OVERVIEW

The Izumi SLV Series portable, lightweight, fully automatic, self-contained battery-operated compression tool makes it easy to access tight cable joints in narrow control panels. The control buttons can be activated with just one hand, leaving the other hand free to hold the working material.

### FEATURES

- Upgraded Electronic Circuit Board
- Brushless 18V Motor with Overload Protection
- Ergonomic Design for One-Hand Operation
- 180-Degree Swivel Head
- Pull Pin Head Design
- LED Light to Illuminate Working Area
- Switch Lever to Change Auto Retract/Manual
- Made in Japan
- Compatible with Makita 18V Batteries
- Manufactured under ISO 9001

### STANDARD ACCESSORIES

- Wrist Strap
- Carry Case

### OPTIONAL ACCESSORIES

Model No.	Description
BL1850B	Makita 18v 5.0Ah Battery
DC18RC	Makita 230V Battery Charger
DM18M	Makita to Milwaukee Battery Adaptor



DC18RC

BL1850B

DM18M



SLV-50M

Inline "Latched" Head

SLV-261EM

Inline "Latched" Head

SLV-60EM

Inline "Latched" Head

SLV-630M

Inline Dieless

### SPECIFICATIONS

Kit Model No.	Style	Jaw Opening (mm)	DIES type	DIES refer to page/s	Force (Kn)	Capacity (mm²)		Dimensions (mm)	Weight inc. BL1850B Battery (kg)
						AL	CU		
SLV-50M(BB)	Inline Latched	13	#111	10	52	120	150	105 L x 364 H x 76 W	2.9
SLV-261EM(BB)	Inline Latched	15	CEMBRE	11	52	150	185	105 L x 364 H x 76 W	2.9
SLV-60EM(BB)	Inline Latched	18	ROUND	12	60	185	240	115 L x 415 H x 83 W	3.6
SLV-630M(BB)	Inline Dieless	N/A	DIELESS	N/A	61.5	10 - 240		135 L x 431 H x 76 W	4.5

NOTE: For special cables or conductors contact Specialised Force and we can suggest most suitable models. To order complete kits including Crimper, two Batteries and 230VAC Charger - add the suffix (BB) to the "Kit Model No." shown in tables above.



## A PROVEN PERFORMER 14.4V INLINE CRIMPER 12T

### OVERVIEW

The Izumi SL streamline series hydraulic crimpers were designed for crimping in tight spaces such as switchboards and panels or pre-existing cable termination points. They accept standard 12 tonne "C" compression dies. Despite their lightweight "in-line" compact design, their performance is still equivalent to that of the pistol style Series 6 tools. The number of times crimping can be completed has increased with the inclusion of 4.0 AH BP-84LI batteries.

### FEATURES

- The SL-510 is the latched head version of the SL-C510
- Compress conductors up to 400mm<sup>2</sup>
- Rapid ram advance mechanism
- Right or left handed operation
- 180° swivel head (SL-C510)
- Manufactured under ISO 9001
- 14.4VDC 4.0Ah Lithium-Ion Batteries with press charge indicator
- 12/24VDC-230VAC charger included ("CC" kit models)
- Sliding pin with lock function prevents head from opening accidentally

### STANDARD ACCESSORIES

- Wrist Strap
- Carry Case

### SPECIFICATION

Kit Model No.	SL-C510(CC)
Style	In-Line
Head Type	C
Jaw Opening	42mm
Force	120 (Kn)
Capacity	Max. 300 mm AL Max. 400 mm CU
Dimensions (mm)	521 L x 150 H x 101 W
Reservoir Capacity	153 (cc)
Wt Inc Battery	7.3 (kg)

### COMPATIBLE DIES REFER TO PAGES 13-16

- 12T Dies 6.0-400mm<sup>2</sup> CU
- 12T Dies 6.0-300mm<sup>2</sup> AL

### ORDERING INFORMATION

Model No.	Description
BP-84LI	1 x Battery Only
CH-120	1 x Charging Base, 1 x DC Charge Adaptor 12/24VDC 1 x AC Charge Adaptor 230VAC
SL-C510	In-Line Battery Powered Compression Tool only
SL-C510(CC)	In-Line Battery Powered Compression Tool 2 x Batteries (BP-84LI) 1 x Charger (CH-120)

**IZUMI**



**SL-C510**

Inline "C" Head

### 14.4V BATTERY & 230VAC/12/24VDC CHARGER

Battery Level  
LED Indicator



12/24VDC BATTERY  
CHARGER ADAPTOR

230V BATTERY CHARGER  
ADAPTOR

## 6 & 12 TONNE BATTERY HYDRAULIC CRIMPERS



### OVERVIEW

The S7G Series Battery Hydraulic Crimpers include a 6-tonne dieless model and two 12-tonne models designed for use with industry-standard 12-tonne dies. These tools are used for applying compression Lugs, Links, Full-Tension & Non-Tension sleeves to a variety of conductor sizes & types, including Copper (CU), Aluminium (AL), ACSR, ABC and a variety of other cables and conductors

### FEATURES

- Upgraded Electronic Circuit Board
- Brushless 18V Motor with Overload Protection
- Quick release die retainer
- 270° Swivel head
- OH&S compliant - no retract pinch point
- Well balanced design suitable for overhead, underground and switchboard applications
- Manual retract button does not rely on battery
- Retract stop feature for multiple crimping
- Ergonomically designed & balanced body for operator comfort
- These tools are fitted with rubber cover to prevent accidental flashover (not rated).
- Made in Japan
- Compatible with Makita 18V Batteries
- Manufactured under ISO 9001

### STANDARD ACCESSORIES

- Shoulder Strap
- Carry Case

### OPTIONAL ACCESSORIES

Model No.	Description
BL1850B	Makita 18v 5.0Ah Battery
DC18RC	Makita 230V Battery Charger
DM18M	Makita to Milwaukee Battery Adaptor



### SECIFICATIONS

Kit Model No.	Style	Jaw Opening (mm)	DIES type	DIES refer to page/s	Force (Kn)	Capacity (mm²)		Dimensions (mm)	Weight inc. BL1850B Battery (kg)
						AL	CU		
S7G-C431M(BB)	Pistol "C" Head	31	12T	13 -16	120	300	300	413 L x 286 H x 92 W	7.4
S7G-C510M(BB)	Pistol "C" Head	42	12T	13 -16	120	300	400	436 L x 286 H x 92 W	7.8
S7G-630M(BB)	Pistol Dieless	18	Dieless	N/A	60	10-240		401 L x 298 H x 82 W	5.8

NOTE: For special cables or conductors contact Specialised Force and we can suggest most suitable models. To order complete kits including Crimper, two Batteries and 230VAC Charger - add the suffix (BB) to the "Kit Model No." shown in tables above.





## 12 & 15 TONNE BATTERY HYDRAULIC CRIMPERS

### OVERVIEW

The S7L Series Battery Hydraulic Crimpers provide faster advance and retraction speeds than previous generation tools. The patent-pending Auto-Retract feature offers a user-selectable ON/OFF switch for manual or automatic retraction. The new ergonomic grip enhances comfort for both "on-ground" and "hold-on" operations. Portability and handling have been improved, and the crimper now features a larger handle opening with a rocker-type advance/retract switch located on top for convenient one-finger trigger operation. The handle opening and rocker switch are designed to accommodate gloved hands. Additionally, the tool incorporates a built-in foot base with finger indents for easier handling when using both hands.

### FEATURES

- Upgraded Electronic Circuit Board
- Brushless 18V Motor with Overload Protection
- 270° Swivel head
- Manual retract button does not rely on battery
- LED Light to Illuminate Working Area
- Ergonomic Design
- Made in Japan
- Compatible with Makita 18V Batteries
- Manufactured under ISO 9001

### 15T DIES

15 Tonne Hex Die-Set Suits S7L-610M & S7L-C610M

Model No.	mm <sup>2</sup>	A/F	Material	Crimp Width
15T-26.0AFCU	300	26.0	CU	10.5mm
15T-28.1AFCU	400	28.1	CU	8.5mm
15T-31.0AFCU	500	31.0	CU	7.2mm
15T-37.0AFCU	630	37.0	CU	6.2mm
15T-39.0AFAL	400/500	39.0	AL	16.5mm



**15T-PU-ADAPTOR** Accepts existing 12 tonne Standard Dies Nest/Indent & "C" connector Dies.

### STANDARD ACCESSORIES

- Shoulder Strap
- Carry Case

### OPTIONAL ACCESSORIES

Model No.	Description
BL1850B	Makita 18v 5.0Ah Battery
DC18RC	Makita 230V Battery Charger
DM18M	Makita to Milwaukee Battery Adaptor

### SPECIFICATIONS

Kit Model No.	Style	Force (kN)	Jaw Opening (mm)	DIES type	DIES refer to page/s	Capacity (mm <sup>2</sup> )		Dimensions (mm)	Weight inc. BL1850B Battery (kg)
						AL	CU		
S7L-431M(BB)	Lunch Box "C" Head	120	31	12T	13 -16	300	300	486 L x 263 H x 92 W	7.7
S7L-510M(BB)	Lunch Box "C" Head	120	42	12T	13 -16	300	400	508 L x 263 H x 92 W	8.0
S7L-C610M(BB)	Lunch Box "C" Head	134	50	15T	13 -16	400/500	630	574 L x 263 H x 108 W	10.6
S7L-610M(BB)	Lunch Box Latched	134	50	15T	13 -16	400/500	630	542 L x 263 H x 94 W	9.0

NOTE: For special cables or conductors contact Specialised Force and we can suggest most suitable models. To order complete kits including Crimper, two Batteries and 230VAC Charger - add the suffix (BB) to the "Kit Model No." shown in tables above.



**S7L-431M**  
Lunch Box "C" Head



**S7L-510M**  
Lunch Box "C" Head



**S7L-C610M**  
Lunch Box "C" Head



**S7L-610M**  
Lunch Box "Latched" Head



DC18RC




BL1850B



DM18M

# CRIMPER REMOTE HEAD 12T & 15T

## REMOTE HEAD CRIMPER 12 TONNE - Standard 12 Tonne Dies Nest/Indent & "C" Connector Dies



**EP-431HA**

**PINCH FREE MODEL**

**FORCE**  
12 Tonne Type

**JAW OPENING**  
31mm C-HEAD

**CAPACITY**  
300mm<sup>2</sup> Al/Cu

**MAX**  
300mm<sup>2</sup>

### MODEL No. EP-431HA

#### INCLUDED ITEMS

Crimp Head, Steel carrying case with die tray

#### SPECIFICATION

Ram Stroke	31mm (Jaw opening)
Oil volume required	50 cc
Force at die face	106 kN
Size	340 (L) mm
Weight	4.75 kg



**EP-610HS2**

**FORCE**  
15 Tonne Type

**JAW OPENING**  
40mm with Dies Fitted

**CAPACITY**  
300mm<sup>2</sup> Al & 400mm<sup>2</sup> Cu  
500mm<sup>2</sup> AL & 630mm<sup>2</sup> CU with 15T Dies

**MAX**  
630mm<sup>2</sup>

### MODEL No. EP-610HS2

#### INCLUDED ITEMS

Steel carrying case with die tray  
(Accepts existing 12 ton Standard Dies Nest/Indent & "C" connector Dies when used with **15T-PU-ADAPTOR**).

#### SPECIFICATIONS

Ram Stroke	50mm (Jaw Opening)
Oil volume required	100 cc
Force at die face	139kN
Size	375 (L) mm
Weight	7.0 kg

### DIES & ACCESSORIES

15 Tonne Hex Die-Set Suits Rec-3610				
Model No.	mm2	A/F	Material	Crimp Width
<b>15T-26.0AFCU</b>	300	26.0	CU	10.5mm
<b>15T-28.1AFCU</b>	400	28.1	CU	8.5mm
<b>15T-31.0AFCU</b>	500	31.0	CU	7.2mm
<b>15T-37.0AFCU</b>	630	37.0	CU	6.2mm
<b>15T-39.0AFAL</b>	400/500	39.0	AL	16.5mm
Model No.	Description			
<b>15T-PU-ADAPTOR</b>	PICK UP ADAPTOR TO SUIT STANDARD 12TONNE DIES			



**EP-510HE**

FITTED WITH A RUBBER BOOT FOR ADDED ELECTRICAL PROTECTION

**PINCH FREE MODEL**

**FORCE**  
12 Tonne Type

**JAW OPENING**  
42mm C-HEAD

**CAPACITY**  
300mm<sup>2</sup> Al & 400mm<sup>2</sup> Cu

**MAX**  
400mm<sup>2</sup>

### MODEL No. EP-510HE

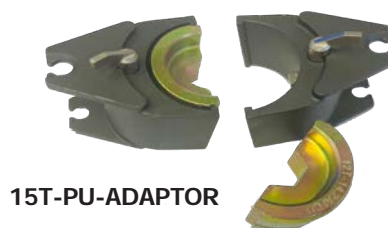
#### INCLUDED ITEMS

Crimp Head, Steel carrying case with die tray

#### SPECIFICATION

Ram Stroke	42mm (Jaw opening)
Oil volume required	77 cc
Force at die face	118 kN
Size	420 (L) mm
Weight	5.7 kg

- Battery or Electric pumps, refer page 53-57
- Dies are sold separately, refer page 13-16 for 12T Dies
- Refer page 51-52 for hydraulic coupling configurations and hoses, supplied standard with screw type female 3050-3 coupling







## MODEL No. EP-250H

### SPECIFICATIONS

Capacity	25 tonne compression head will crimp cable lugs to 630mm <sup>2</sup> Copper and 500mm <sup>2</sup> Aluminium.
Weight	6.8kg
Working Pressure	700 Bar. 10,000 PSI

### FEATURES

Unique twist-lock die retaining pin holds top die in place and cannot be misplaced or incorrectly fitted.

### DETAILS

- See below for available Dies, Special Die Sizes available upon request
- Adaptor die to accept standard 12 tonne shell-type dies available (**Model No. 25T-12T**)
- Full range of hand, foot, air /hydraulic electric & battery pumps are available
- Alternative hydraulic coupling types available upon request
- Now with spring loaded die lock pin to eliminate misalignment of dies, due to pin not engaging properly



**Model No. 25T-12T**

## MODEL No. EP-250H ITEMS INCLUDED

25 Tonne Head, heavy-duty metal carry-case, with die tray



### ALUMINUM DIES

Model No.	Hex A/F (mm)	Width of Crimp Face (mm)	Conductor Details
25T-30.0AFAL	30.0	25.0	19/3.75 PEARL-NEON AAAC
25T-39.0AFAL	39.0	25.0	400/500mm <sup>2</sup>

### COPPER DIES

Model No.	Hex A/F (mm)	Width of Crimp Face (mm)	Conductor Details
25T-18.3AFCU	18.3	16.0	150mm <sup>2</sup>
25T-20.0AFCU	20.0	16.0	185mm <sup>2</sup>
25T-23.1AFCU	23.1	16.0	240mm <sup>2</sup>
25T-26.0AFCU	26.0	16.0	300mm <sup>2</sup>
25T-28.1AFCU	28.1	16.0	400mm <sup>2</sup>
25T-31.0AFCU	31.0	16.0	500mm <sup>2</sup>
25T-37.0AFCU	37.0	12.2	630mm <sup>2</sup>

### ACSR DIES

Model No.	Hex A/F (mm)	Width of Crimp Face (mm)	Conductor Details
25T-28.5AFAL	28.5	27.0	30/7/2.50 GRAPE

### STEEL INNER DIES

Model No.	Hex A/F	Width of Crimp Face	Conductor Details
25T-16.0AFST	16.0	17.0	AS USED ON GRAPE

25T TO 12T DIE ADAPTOR ALSO AVAILABLE (**Model No. 25T-12T**)  
SPECIAL DIES CAN BE MANUFACTURED TO YOUR SPECIFICATIONS

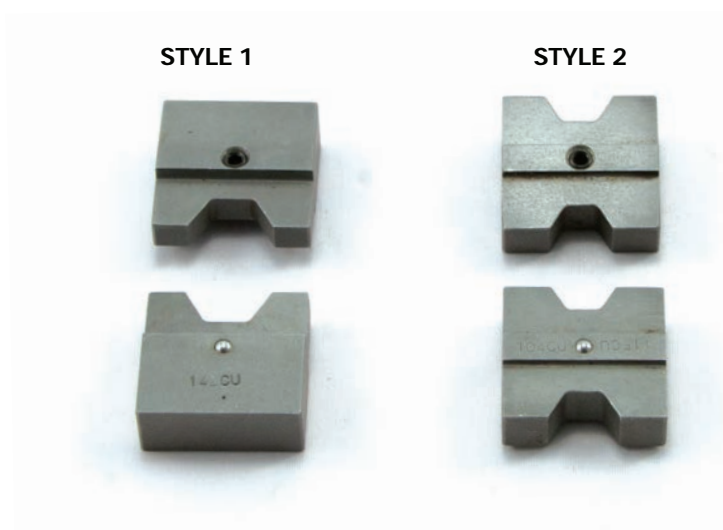
- Refer page 13-16 for 12 tonne dies
- Refer page 51-52 for hydraulic coupling configurations and hoses, supplied standard with screw type female 3050-3 coupling
- Battery or Electric pumps, refer page 53-57



**DIES 5 TONNE SERIES 111 (TO SUIT SLV-50M INLINE CRIMPER)**

Model No.	Dimensions Of Hex Die (mm)		Style	Application
	A/F	Crimp Length		
Copper				
5T-111-5763CU/1	5.7	12	2	10 mm² Cu (Lugs & Links)
	6.3			16 mm² Cu (Lugs & Links)
5T-111-7792CU/1	7.7	12	2	25 mm² Cu (Lugs & Links)
	9.2			35 mm² Cu (Lugs & Links)
5T-111-104115CU/1	10.4	9	2	50 mm² Cu (Lugs & Links)
	11.5			70 mm² Cu (Lugs & Links)
5T-111-142CU/1	14.2	6	1	95 mm² Cu (Lugs & Links)
5T-111-165CU/1	16.5	6	1	120 mm² Cu (Lugs & Links)
5T-111-148CU/1	14.8	6	1	19/2.00 OH
5T-111-183CU/1	18.3	5	1	150 mm² Cu (Lugs & Links)
5T-111-200CU/1	20.0	5	1	185 mm² Cu (Lugs & Links)
Aluminium				
5T-111-140173AL/1	14.0	9	2	25mm ABC
	17.3			35-70mm ABC
5T-111-180190AL/1	18.0	9	2	Full tension sleeve on 7/3.00 and 7/3.75
	19.0			Full tension sleeve on 7/4.50
5T-111-210AL/1	21.0	9	1	Non tension sleeve on 19/3.75 also 120 mm CCT
5T-111-215AL/1	21.5	9	1	95-150mm ABC
5T-111-220AL/1	22.0	9	1	Full tension sleeve on 19/3.75

Each die has dual markings cable size mm<sup>2</sup> and A/F hex.  
 Note: Each die set consists of 2 pieces





**DIES 5 TONNE CEMBRE (TO SUIT SLV-261EM INLINE CRIMPER)**

Model No.	A/F Dimension	Description	Tool
Aluminium			
5T-M90-50	9.00mm	9.0 AF AL	SLV-261EM
5T-M132-50	13.20mm 50-70mm <sup>2</sup>	13.2 AF AL	SLV-261EM
5T-M140-50	14.00mm 7/2.25 UTILUX 25mm <sup>2</sup> ABC	14.0 AF AL	SLV-261EM
5T-M173-50	17.30mm 95-120mm <sup>2</sup>	17.3 AF AL	SLV-261EM
5T-M215-50	21.50mm 150-185mm <sup>2</sup> UTILUX 35-70mm <sup>2</sup> ABC	21.5 AF AL	SLV-261EM
5T-M220-50	22.00mm 19/3.25 CABAC 95-120mm <sup>2</sup> ABC	22.0 AF AL	SLV-261EM
Copper			
5T-M63-50	6.30mm 16mm <sup>2</sup>	6.3 AF CU	SLV-261EM
5T-M77-50	7.70mm 25mm <sup>2</sup>	7.7 AF CU	SLV-261EM
5T-M87-50	8.70mm SPECIAL	8.7 AF CU	SLV-261EM
5T-M92-50	9.20mm 35mm <sup>2</sup>	9.2 AF CU	SLV-261EM
5T-M96-50	9.60mm 7/2.00 & 7/2.03	9.6 AF CU	SLV-261EM
5T-M104-50	10.40mm 50mm <sup>2</sup>	10.4 AF CU	SLV-261EM
5T-M115-50	11.50mm 70mm <sup>2</sup>	11.5 AF CU	SLV-261EM
5T-M142-50	14.20mm 95mm <sup>2</sup>	14.2 AF CU	SLV-261EM
5T-M148-50	14.80mm 19/2.00 O/HEAD 19/2.11	14.8 AF CU	SLV-261EM
5T-M165-50	16.50mm 120mm <sup>2</sup>	16.5 AF CU	SLV-261EM
5T-M183-50	18.30mm 150mm <sup>2</sup>	18.3 AF CU	SLV-261EM
5T-M190-50	19.00mm SPECIAL	19.0 AF CU	SLV-261EM
5T-M200-50	20.00mm 185mm <sup>2</sup>	20.0 AF CU	SLV-261EM
Cutting Die			
5T-MB52-50	10.00mm CUT	STAY WIRE CUTTING DIE 10.0mm O.D.	SLV-261EM



## 6 TON ROUND DIES

**SUITS KLAUKE EK425, IZUMI SLV-ND, SLV-60EM  
DOES NOT SUIT IZUMI 5 TONNE TOOLS**

### COPPER

Model No.	Dimensions Of Hex Die (mm)		Conductor Details (mm <sup>2</sup> )
	A/F	Crimp Length	
6T-6.3AFCU	6.3	6.0	16
6T-7.7AFCU	7.7	10.0	25
6T-9.2AFCU	9.2	10.0	35
6T-10.4AFCU	10.4	9.0	50
6T-11.5AFCU	11.5	9.0	70
6T-14.2AFCU	14.2	6.0	95
6T-16.5AFCU	16.5	6.0	120
6T-18.3AFCU	18.3	5.0	150
6T-20.0AFCU	20.0	5.0	185
6T-23.1AFCU	23.1	5.0	240
6T-CUSET240	COPPER DIE SET		INCLUDES ALL DIES ABOVE

### ALUMINIUM

Model No.	Dimensions Of Hex Die (mm)		Conductor Details (mm <sup>2</sup> )
	A/F	Crimp Length	
6T-9.0AFAL	9.0	12.0	10-35
6T-13.2AFAL	13.2	12.0	50-70
6T-22.0AFAL	22.0	9.0	150-185

### ABC - PRE-INSULATED SLEEVES


Model No.	Dimensions Of Hex Die (mm)		Conductor Details (mm <sup>2</sup> )
	A/F	Crimp Length	
6T-14.0AFALABC	14.0	9.0	25
6T-17.3AFALABC	17.3	9.0	35-70
6T-21.5AFALABC	21.5	9.0	95-150



**6T-CUSET240**

## DIES ALUMINIUM 12 TONNE

Suitable for ALL brands of 12T Battery, Manual & Remote Head Hydraulic Compression Tools

Model No.	Hex A/F	Length Of Crimp Face	Conductor Details	
Aluminium				
12T-9.0AFAL	9.0 mm	22.0 mm	6-35 mm2	
12T-13.2AFAL	13.2 mm	22.0 mm	50-70 mm2	
12T-17.3AFAL	17.3 mm	22.0 mm	95-120 mm2	
12T-21.0AFAL	21.0 mm	18.0 mm	150-185 mm2 UTILUX	
12T-22.0AFAL	22.0 mm	18.0 mm	150-185 mm2 CABAC	
12T-28.4AFAL	28.4 mm	18.0 mm	240-300 mm2	
Overhead				
12T-14.0AFAL	14.0 mm	22.0 mm	7/2.25 UTILUX	
12T-14.5AFAL	14.5 mm	22.0 mm	7/2.50	
12T-18.0AFAL	18.0 mm	22.0 mm	7/3.00 & 7/3.75 CABAC	
12T-18.3AFAL	18.3 mm	22.0 mm		
12T-19.0AFAL	19.0 mm	22.0 mm	7/4.50 CABAC	
12T-22.0AFAL	22.0 mm	18.0 mm	19/3.25 CABAC	
12T-26.2AFAL	26.2 mm	18.0 mm	19/3.75 CABAC	
12T-30.3AFAL	30.3 mm	18.0 mm	19/4.75	
ABC				
12T-14.0AFALABC	14.0 mm	9.0 mm	25 mm2 ABC	
12T-17.3AFALABC	17.3 mm	9.0 mm	35 - 70 mm2 ABC	
12T-21.5AFALABC	21.5 mm	9.0 mm	95 - 150 mm2 ABC	
12T-25.0AFALABC	25.0 mm	8.0 mm	ABC	
Specials				
12T-7.7AFAL	7.7 mm	25.0 mm		
12T-16.5AFAL	16.5 mm	22.0 mm		
12T-21.5AFAL	21.5 mm	18.0 mm		
12T-24.9AFAL	24.9 mm	18.0 mm		
12T-30.0AFAL	30.0 mm	18.0 mm		
Steel				
12T-7.5AFST	7.5 mm	10 mm	INNER STEEL (ACSR)	
12T-9.5AFST	9.5 mm	10 mm	INNER STEEL (ACSR)	
Nest & Indent Sizes For “UG” Aluminium Sector Cable				
Conductor Size	3 Core		4 Core	
	Nest	Indent	Nest	Indent
70mm²	12T-12NEST	12T-INDENT14	12T-14NEST	12T-INDENT14
95mm²	12T-12NEST	12T-INDENT15	12T-14NEST	12T-INDENT15
120mm²	12T-12NEST	12T-INDENT16	12T-14NEST	12T-INDENT16
150mm²	12T-12NEST	12T-INDENT17	12T-15NEST	12T-INDENT17
185mm²	12T-12NEST	12T-INDENT18	12T-15NEST	12T-INDENT18
240mm²	12T-12NEST	12T-INDENT19	12T-15NEST	12T-INDENT19
300mm²	12T-12NEST	12T-INDENT20	12T-15NEST	12T-INDENT20
CUTTING DIE				
12T-CUTTINGDIE	Guy Wire/Guy Strand/EHS Guy Wire, ACSR/AL/CU Ground Rod & Soft Steel Bolts			16mm (5/8")
				17.5mm
				16mm (5/8")

**PLEASE NOTE:** THIS CHART IS A GUIDE ONLY, PLEASE CHECK WITH YOUR LUG/LINK MANUFACTURER FOR AF SIZES



**STEEL STORAGE BOX WITH FOAM INSERT**  
(15 DIE CAPACITY)  
MODEL No. 12T-METAL-BOX



**PLASTIC STORAGE BOX ALSO AVAILABLE**  
(18 DIE CAPACITY)  
MODEL No. 12T-BOX





## DIES ALUMINIUM & SETS 12 TONNE

Suitable for ALL brands of 12T Battery, Manual & Remote Head Hydraulic Compression Tools

Model No.	Hex A/F	Length Of Crimp Face	Conductor Details
Copper			
12T-4.4AFCU	4.4 mm	6.35 mm	6 mm2
12T-5.7AFCU	5.7 mm	6.35 mm	10 mm2
12T-6.3AFCU	6.3 mm	17.5 mm	16 mm2 *
12T-7.7AFCU	7.7 mm	17.5 mm	25 mm2 *
12T-9.2AFCU	9.2 mm	17.5 mm	35 mm2 *
12T-10.4AFCU	10.4 mm	17.5 mm	50 mm2 *
12T-11.5AFCU	11.5 mm	17.5 mm	70 mm2 *
12T-14.2AFCU	14.2 mm	17.5 mm	95 mm2 *
12T-16.5AFCU	16.5 mm	14.0 mm	120 mm2 *
12T-18.3AFCU	18.3 mm	14.0 mm	150 mm2 *
12T-20.0AFCU	20.0 mm	14.0 mm	185 mm2 *
12T-23.1AFCU	23.1 mm	10.0 mm	240 mm2 *
12T-26.0AFCU	26.0 mm	10.0 mm	300 mm2 *
12T-28.1AFCU	28.1 mm	8.0 mm	400 mm2 **
Overhead			
12T-8.3AFCU	8.3 mm	9.0 mm	7/1.63 & 7/1.70
12T-9.6AFCU	9.6 mm	9.0 mm	7/2.00 & 7/2.03
12T-11.5AFCU	11.5 mm	9.0 mm	7/2.62
12T-13.0AFCU	13.0 mm	17.5 mm	37/.064 19/2.11
12T-14.8AFCU	14.8 mm	9.0 mm	19/2.0 & 19/2.11
12T-19.3AFCU	19.3 mm	14.0 mm	19/2.57
Copper Screen			
12T-12.7AFCU	12.7 mm	14.0 mm	185mm2 TRIPLEX
12T-7.5AFCU	7.5 mm	16.0 mm	35mm2 TRIPLEX
Specials			
12T-8.7AFCU	8.7 mm	17.5 mm	SPECIAL



**STEEL STORAGE BOX WITH FOAM INSERT**

(15 DIE CAPACITY)

MODEL No. 12T-METAL-BOX



**PLASTIC STORAGE BOX ALSO AVAILABLE**

(18 DIE CAPACITY)

MODEL No. 12T-BOX

## DIE SETS 12 TONNE

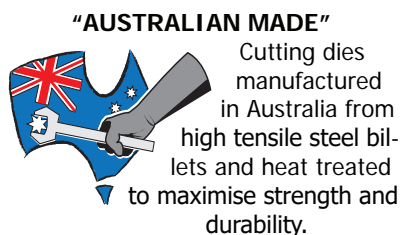
Suitable for ALL brands of 12T Battery, Manual & Remote Head Hydraulic Compression Tools

Individual Die Ordering Codes	Copper												Aluminium					
	12T-6.3AFCU	12T-7.7AFCU	12T-9.2AFCU	12T-10.4AFCU	12T-11.5AFCU	12T-14.2AFCU	12T-16.5AFCU	12T-18.3AFCU	12T-20.0AFCU	12T-23.1AFCU	12T-26.0AFCU	12T-28.1AFCU	12T-9.0AFAL	12T-13.2AFAL	12T-17.3AFAL	12T-21.0AFAL	12T-22.0AFAL	12T-28.4AFAL
Hex A/F (mm)	6.3	7.7	9.2	10.4	11.5	14.2	16.5	18.3	20	23.1	26	28.1	9	13.2	17.3	21	22	28.4
Length Of Crimp Face (mm)	17.5	17.5	17.5	17.5	17.5	17.5	14	14	14	10	10	8	22	22	22	18	18	18
Conductor Details (mm2)	16	25	35	50	70	95	120	150	185	240	300	400	6-35	50-70	95-120	150-185 UTILUX	150-185 CABAC	240-300
Die Set Ordering Codes	Case	Pcs	Below are the individual dies included in the given Die Set, indicated with a ✓															
12T-CUSET-MB	Metal	11	✓	✓	✓	✓	✓	✓	✓	✓	✓	✓						
12T-CUSET	Plastic	11	✓	✓	✓	✓	✓	✓	✓	✓	✓	✓						
12T-CUSET-MB400HB	Metal	12	✓	✓	✓	✓	✓	✓	✓	✓	✓	✓	✓					
12T-CUSET400	Plastic	12	✓	✓	✓	✓	✓	✓	✓	✓	✓	✓	✓					
12T-ALCUSET-MB	Metal	18	✓	✓	✓	✓	✓	✓	✓	✓	✓	✓	✓	✓	✓	✓	✓	✓
12T-ALSET	Plastic	6											✓	✓	✓	✓	✓	✓
12T-ALSET-MB	Metal	6											✓	✓	✓	✓	✓	✓

## MODEL No. 12T- SERIES COPPER “C” CONNECTOR DIES

Die sets are for Copper “C” Connectors which are “C” shaped copper sections for terminating main and tap copper conductors. Our dies are made to the same specifications as Burndy, Cabac and Dulmison/PLP (Preformed Line Products). We also supply a range of Utilux die sets for copper conductor terminations.

Model No.	Description	Equivalent to		
		Burndy	Cabac	Dulmison/PLP
<b>12T-U1011</b>	Compression Die C-Connector	U1011	HT130-C1011	-
<b>12T-U997</b>	Compression Die C-Connector	U997	HT130-C997	-
<b>12T-UC</b>	Compression Die C-Connector	UC	HT130-CC	-
<b>12T-UO</b>	Compression Die C-Connector	UO	HT130-CO	DU1315
<b>12T-DU1315</b>	Compression Die C-Connector	UO	HT130-CO	DU1315



12T-U1011



12T-U997



12T-UC



12T-UO & 12T-DU1315

## DIES FOR “YGHC” STYLE EARTHING CONNECTORS

Model No. (12Tonne)	To suit Burndy earthing connector, catalogue no.	COPPER CONDUCTOR RANGE		IMAGE
		TAP mm <sup>2</sup>	RUN mm <sup>2</sup>	
<b>12T-UC</b>	YGHC2C2	10~35	10~35	
<b>12T-UO</b>	YGHC26C2	50~70	16~35	
<b>12T-UO</b>	YGHC26C26	50~70	50~70	
<b>12T-U997</b>	YGHC29C26	95~150	16~70	
<b>12T-U997</b>	YGHC29C29	95~150	95~120	
<b>12T-U1011</b>	YGHC34C26	150~240	10~70	
<b>12T-U1011</b>	YGHC34C29	150~240	95~120	
<b>12T-U1011</b>	YGHC34C34	150~240	150~240	

## DIES FOR “YGHR” STYLE EARTHING CONNECTORS

Model No. (12Tonne)	To suit Burndy earthing connector, catalogue no.	COPPER CONDUCTOR RANGE		IMAGE
		TAP mm <sup>2</sup>	RUN mm <sup>2</sup>	
<b>12T-UC</b>	YGHR26C12	10~35	10~35	
<b>12T-UO</b>	YGHR26C58	50~70	16~35	
<b>12T-UO</b>	YGHR26C34	50~70	50~70	
<b>12T-U997</b>	YGHR26C100	95~150	16~35	
<b>12T-U997</b>	YGHR29C12	95~150	50~70	
<b>12T-U997</b>	YGHR29C58	95~150	95~150	

## DIES FOR “YGHP” STYLE EARTHING CONNECTORS

Model No. (12Tonne)	To suit Burndy earthing connector, catalogue no.	COPPER CONDUCTOR RANGE		IMAGE
		TAP mm <sup>2</sup>	RUN mm <sup>2</sup>	
<b>12T-UO</b>	YGHP2C2	10~35	10~35	
<b>12T-U997</b>	YGHP29C26	15~120	50~70	
<b>12T-U997</b>	YGHP29C29	(13-15mm ROD)	95~120	
<b>12T-U997</b>	YGHP34C26		50~70	
<b>12T-U997</b>	YGHP34C29	150~240	95~120	
<b>12T-U1011</b>	YGHP34C34	(16-19mm ROD)	150~240	

## MODEL No. 12T-CUTTING DIE (MADE IN AUSTRALIA)



**“AUSTRALIAN MADE”**  
Cutting dies manufactured in Australia from high tensile steel billets and heat treated to maximise strength and durability.

### CAN BE USED IN

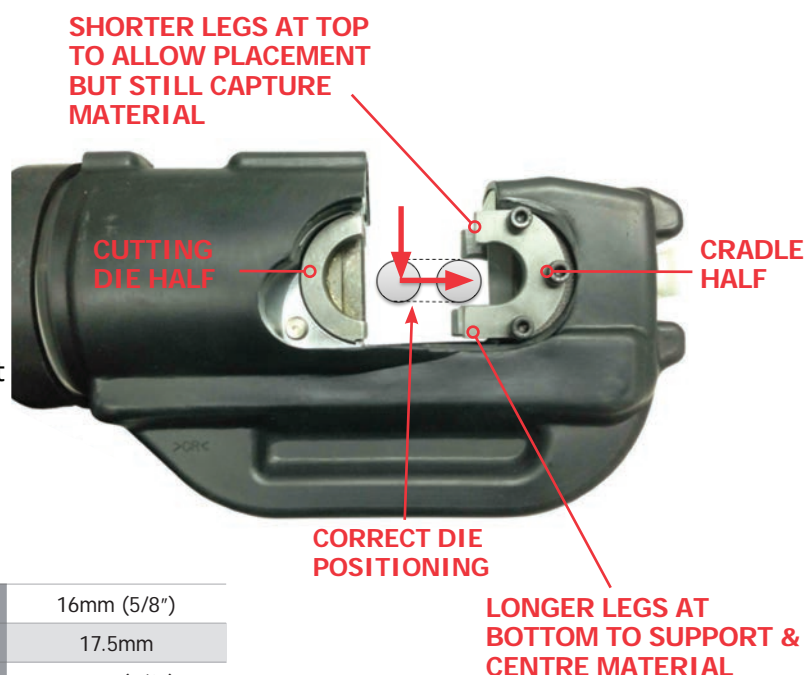
- 12 Tonne Hand Hydraulic Crimping Tools
- 12 Tonne Battery Powered Crimpers
- Remote Head Hydraulic Crimpers

### BENEFITS

- Less costly than dedicated Cutting Tools
- Simple to install in Crimping Tools
- Require no adjustment for cutting different materials
- Heavy duty design with 6 high tensile cap screws.

### CAN CUT THE FOLLOWING MATERIALS

Guy Wire/Guy Strand/EHS Guy Wire	16mm (5/8")
ACSR/AL/CU	17.5mm
Earth Rod & Soft Steel Bolts	16mm (5/8")





## BATTERY RATCHET SCISSOR CUTTERS (MADE IN JAPAN)

### OVERVIEW

The Izumi SLV Series Portable, lightweight, versatile battery hydraulic cutters are designed for easy cutting of overhead conductors, underground cables, wires, and ropes. The operation switch is easily activated, leaving your other hand free to align and maneuver the cutting material. 7 Series models feature new electronic circuit boards and improved, powerful gear reduction magnetic motors with overload protection.

### FEATURES

- Upgraded Electronic Circuit Board
- Brushless 18V Motor with Overload Protection
- Ergonomic Design for One-Hand Operation
- 180-Degree Swivel Head
- Pull Pin Head Design
- LED Light to Illuminate Working Area
- Switch Lever to Change Auto Retract/Manual
- Made in Japan
- Compatible with Makita 18V Batteries
- Manufactured under ISO 9001

### STANDARD ACCESSORIES

- Wrist Strap
- Carry Case

### OPTIONAL ACCESSORIES

Model No.	Description
<b>BL1850B</b>	Makita 18v 5.0Ah Battery
<b>DC18RC</b>	Makita 230V Battery Charger
<b>DM18M</b>	Makita to Milwaukee Battery Adaptor



DC18RC



BL1850B



DM18M

Latch Style Head



**SLV-S24M**

Inline Guillotine



**SLV-Y30M**

Inline Scissor

### TOOL SPECIFICATIONS

Kit Model No.	Ram Stroke (mm)	Blade Opening (mm)	Dimensions (mm)	Weight inc. BL1850B Battery (kg)
<b>SLV-S24M(BB)</b>	20	24	108 L x 362 H x 76 W	4.1
<b>SLV-Y30M(BB)</b>	40	30	109 L x 412 H x 76 W	3.9

### CUTTING SPECIFICATIONS

Kit Model No.	Style	Force (kN)	Cuts	Opening Ø (mm)	Maximum Cutting Capacity for Material Type (mm)								
					Wire Rope	Guy Wire	Steel Bolt	Rebar	AL Strands	CU Strands	ACSR	AL Bar	CU Bar
<b>SLV-S24M(BB)</b>	Inline Guillotine	87	AL/CU/ACSR	24	18	20	18	16	24	24	24	20	18
<b>SLV-Y30M(BB)</b>	Inline Scissor	65	AL/CU/ACSR	30	-	-	-	-	20	20	14	-	-

NOTE: For special cables or conductors contact Specialised Force and we can suggest most suitable models. To order complete kits including Cutter, two Batteries and 230VAC Charger - add the suffix (BB) to the "Kit Model No." shown in tables above.

## BATTERY RATCHET SCISSOR CUTTERS (MADE IN JAPAN)



### OVERVIEW

The Izumi S7 Series scissor ratchet-style battery cable cutters are designed for cutting both overhead and underground power cables and conductors. The scissor-style design makes it easier to access cables in tight spaces. The rocker trigger switch can be easily operated with one hand, leaving the other hand free to align and maneuver the cutting material. For added safety, the trigger includes a dead-man button to prevent accidental operation. The models feature new electronic circuit boards, improved powerful gear reduction, and brushless motors with overload protection.

### FEATURES

- Upgraded Electronic Circuit Board
- Brushless 18V Motor with Overload Protection
- New Auto Reverse feature for Continuous Cutting
- The auto reverse adjust knob allows the dial to adjust the reverse distance according to the cable outer diameter (O.D.)
- LED Light to Illuminate Working Area
- Ergonomic Design
- Made in Japan
- Compatible with Makita 18V Batteries
- Manufactured under ISO 9001

### STANDARD ACCESSORIES

- Wrist Strap
- Carry Case

### OPTIONAL ACCESSORIES

Model No.	Description
<b>BL1850B</b>	Makita 18v 5.0Ah Battery
<b>DC18RC</b>	Makita 230V Battery Charger
<b>DM18M</b>	Makita to Milwaukee Battery Adaptor



DC18RC



BL1850B



DM18M



**S7-KY33M**  
Scissor Ratchet

**S7-K50YM**  
Scissor Ratchet

### TOOL SPECIFICATIONS

Kit Model No.	Dimensions (mm)	Weight inc. BL1850B Battery (kg)
<b>S7-KY33M(BB)</b>	145 L x 365 H x 116 W	3.3
<b>S7-KY50M(BB)</b>	145 L x 380 H x 116 W	3.6

### CUTTING SPECIFICATIONS

Kit Model No.	Style	Cuts	Opening Ø (mm)	Maximum Cutting Capacity for Material Type		
				AL	CU	ACSR
<b>S7-KY33M(BB)</b>	Scissor Ratchet	AL/CU/ACSR	<b>33</b>	33 O.D. mm	33 O.D. mm	18.6 mm
<b>S7-K50YM(BB)</b>	Scissor Ratchet	AL/CU	<b>50</b>	630mm <sup>2</sup>	500mm <sup>2</sup>	N/A

NOTE: For special cables or conductors contact Specialised Force and we can suggest most suitable models. To order complete kits including Cutter, two Batteries and 230VAC Charger - add the suffix (BB) to the "Kit Model No." shown in tables above.

## BATTERY RATCHET CUTTERS (MADE IN JAPAN)



### OVERVIEW

The Izumi S7 Series ratchet-style battery cable cutters are designed for cutting both overhead and underground power cables and conductors. The scissor-style design makes it easier to access cables in tight spaces. The rocker trigger switch can be easily operated with one hand, leaving the other hand free to align and maneuver the cutting material. For added safety, the trigger includes a dead-man button to prevent accidental operation. The models feature new electronic circuit boards, improved powerful gear reduction, and brushless motors with overload protection.

### FEATURES

- Upgraded Electronic Circuit Board
- Brushless 18V Motor with Overload Protection
- New Auto Reverse feature for Continuous Cutting
- The auto reverse adjust knob allows the dial to adjust the reverse distance according to the cable outer diameter (O.D.)
- LED Light to Illuminate Working Area
- Ergonomic Design
- Made in Japan
- Compatible with Makita 18V Batteries
- Manufactured under ISO 9001

### STANDARD ACCESSORIES

- Wrist Strap
- Carry Case

### OPTIONAL ACCESSORIES

Model No.	Description
<b>BL1850B</b>	Makita 18v 5.0Ah Battery
<b>DC18RC</b>	Makita 230V Battery Charger
<b>DM18M</b>	Makita to Milwaukee Battery Adaptor



DC18RC



BL1850B



DM18M



**S7-K50M**  
Ratchet

**S7-K65M**  
Ratchet

**S7-K54ACSRM**  
Ratchet

### TOOL SPECIFICATIONS

Kit Model No.	Dimensions (mm)	Weight inc. BL1850B Battery (kg)
<b>S7-K50M(BB)</b>	145 L x 318 H x 116 W	2.9
<b>S7-K65M(BB)</b>	145 L x 356 H x 116 W	3.5
<b>S7-K54ACSRM(BB)</b>	145 L x 356 H x 116 W	5.4

### CUTTING SPECIFICATIONS

Kit Model No.	Style	Cuts	Opening Ø (mm)	Maximum Cutting Capacity for Material Type			
				AL	CU	ACSR	Notes
<b>S7-K50M(BB)</b>	Ratchet	AL/CU	50	630mm <sup>2</sup>	500mm <sup>2</sup>	N/A	
<b>S7-K65M(BB)</b>	Ratchet	AL/CU	65	630mm <sup>2</sup>	630mm <sup>2</sup>	N/A	AL (4x240mm <sup>2</sup> ) CU (4x185mm <sup>2</sup> )
<b>S7-K54ACSRM(BB)</b>	Ratchet	AL/CU/ ACSR	54	630mm <sup>2</sup>	500mm <sup>2</sup>	31.5 O.D. mm	ACSR Olive AL 54/3.50 Steel 7/3.50

NOTE: For special cables or conductors contact Specialised Force and we can suggest most suitable models. To order complete kits including Cutter, two Batteries and 230VAC Charger - add the suffix (BB) to the "Kit Model No." shown in tables above.



## BATTERY HYDRAULIC CUTTERS (MADE IN JAPAN)

### OVERVIEW

The Izumi S7G Series pistol-style battery cable cutters are designed for cutting underground and overhead power cables or conductors. However, there are many other applications, as indicated in the tables below. The operation switch can be easily activated with one hand, leaving your other hand free to align and maneuver the cutting material. The trigger also includes a safety feature to prevent inadvertent operation.

### FEATURES

- Upgraded Electronic Circuit Board
- Brushless 18V Motor with Overload Protection
- 270° Swivel head
- Manual retract button does not rely on battery
- Ergonomic Design
- Made in Japan
- Compatible with Makita 18V Batteries
- Manufactured under ISO 9001

### STANDARD ACCESSORIES

- Wrist Strap
- Carry Case

### OPTIONAL ACCESSORIES

Model No.	Description
BL1850B	Makita 18v 5.0Ah Battery
DC18RC	Makita 230V Battery Charger
DM18M	Makita to Milwaukee Battery Adaptor



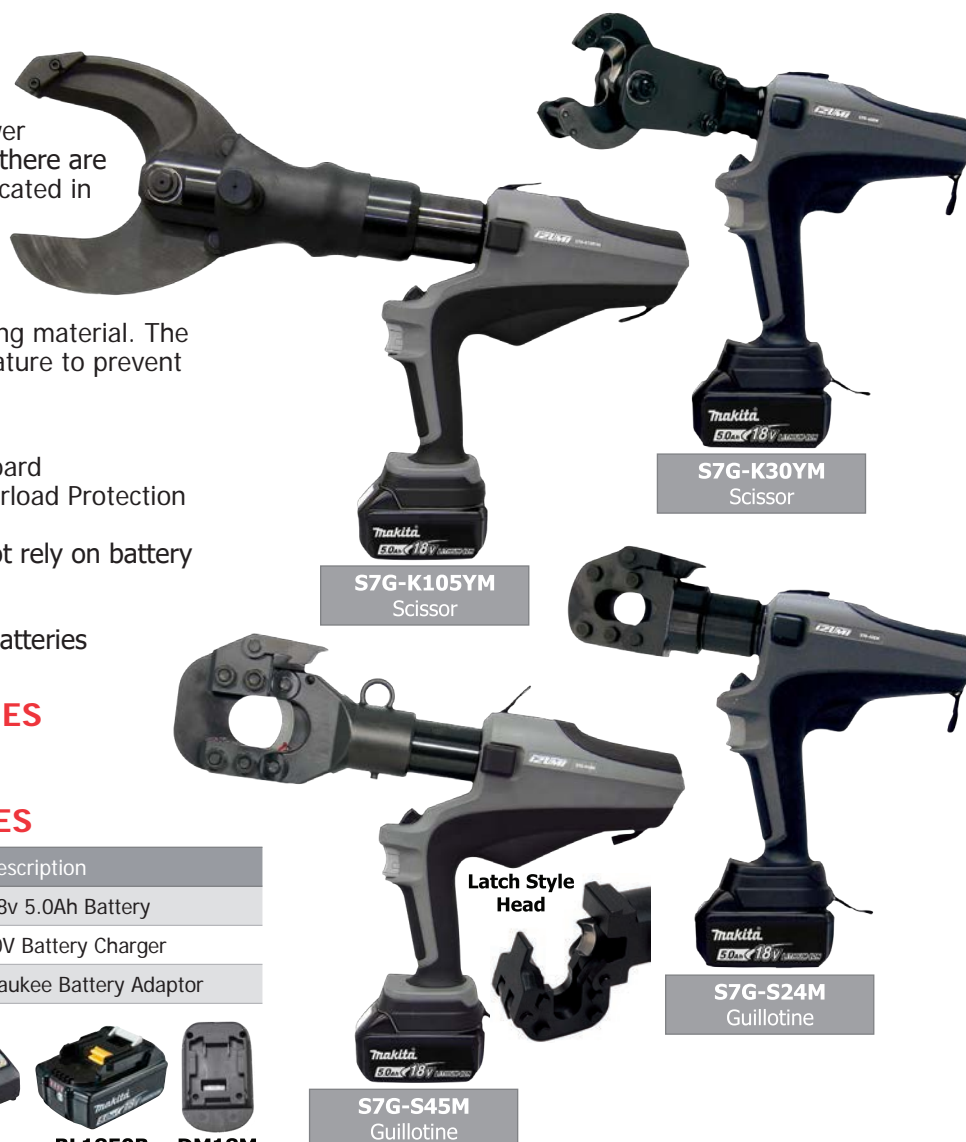
DC18RC



BL1850B



DM18M



**S7G-K30YM**  
Scissor

**S7G-K105YM**  
Scissor

**S7G-S24M**  
Guillotine

**S7G-S45M**  
Guillotine

### TOOL SPECIFICATIONS

Kit Model No.	Dimensions (mm)	Weight inc. BL1850B Battery (kg)
<b>S7G-K30YM(BB)</b>	393 L x 283 H x 82 W	4.5
<b>S7G-K105YM(BB)</b>	601 L x 346 H x 92 W	8.9
<b>S7G-S45M(BB)</b>	444 L x 318 H x 92 W	6.9
<b>S7G-S24M(BB)</b>	339 L x 281 H x 82 W	5.0

### CUTTING SPECIFICATIONS

Kit Model No.	Style	Force (kN)	Cuts	Opening Ø (mm)	Maximum Cutting Capacity for Material Type (mm)						
					Wire Rope	Guy Wire	Steel Rod/Bolt	Rebar	AL	CU	ACSR
<b>S7G-K30YM(BB)</b>	Scissor	60	AL/CU/ACSR	30	18	20	18	16	24	24	14
<b>S7G-K105YM(BB)</b>	Scissor	124	AL/CU	105	-	-	-	-	105	105	-
<b>S7G-S45M(BB)</b>	Guillotine	70	AL/CU/ACSR	45	22	16	16	-	45	45	32
<b>S7G-S24M(BB)</b>	Guillotine	85	AL/CU/ACSR	24	24	20	16	-	24	24	24

NOTE: For special cables or conductors contact Specialised Force and we can suggest most suitable models. To order complete kits including Cutter, two Batteries and 230VAC Charger - add the suffix (BB) to the "Kit Model No." shown in tables above.

## BATTERY HYDRAULIC CUTTERS (MADE IN JAPAN)

### OVERVIEW

The S7L series battery hydraulic cutters can be used for cutting a variety of sizes and types of material. The guillotine-style head cuts up to 40mm in diameter, including CU, AL, ACSR, guy wire, rebar, and wire rope. The scissor-style head cuts up to 105mm in diameter, including polyethylene power cables, multi-core vinyl insulation, and CU and AL conductors.

### FEATURES

- Upgraded electronic circuit board
- Brushless 18V motor with overload protection
- LED Light to Illuminate Working Area
- Manual retract button does not rely on battery
- Compatible with Makita 18V Batteries
- Ergonomic Design
- Made in Japan
- Manufactured under ISO 9001

### STANDARD ACCESSORIES

- Shoulder strap
- Carry Case

### OPTIONAL ACCESSORIES

Model No.	Description
<b>BL1850B</b>	Makita 18v 5.0Ah Battery
<b>DC18RC</b>	Makita 230V Battery Charger
<b>DM18M</b>	Makita to Milwaukee Battery Adaptor



DC18RC



BL1850B



DM18M

### TOOL SPECIFICATIONS

Kit Model No.	Dimensions (mm)	Weight inc. BL1850B Battery (kg)
<b>S7L-S550M(BB)</b>	556 L x 263 H x 92 W	10.4
<b>S7L-K105YM(BB)</b>	670 L x 267 H x 99 W	10.5
<b>S7L-S132M(BB)</b>	822 L x 263 H x 92 W	17.3

### CUTTING SPECIFICATIONS

Kit Model No.	Style	Force (kN)	Cuts	Opening Ø (mm)	Maximum Cutting Capacity for Material Type (mm)				
					AL	CU	ACSR	Wire Rope	Steel Rod/Bolt
<b>S7L-S550M(BB)</b>	Lunch Box Guillotine	120	AL/CU/ACSR	54	50	50	50	30	22
<b>S7L-K105YM(BB)</b>	Lunch Box Scissor	124	AL/CU	105	105	105	-	-	-
<b>S7L-S132M(BB)</b>	Lunch Box Guillotine	135	AL/CU	132	130	100	-	-	-

NOTE: For special cables or conductors contact Specialised Force and we can suggest most suitable models. To order complete kits including Cutter, two Batteries and 230VAC Charger - add the suffix (BB) to the "Kit Model No." shown in tables above.



Pin Style Head



**S7L-S550M**  
Guillotine



**S7L-K105YM**  
Scissor



**S7L-S132M**  
Guillotine

## 6 & 12 TONNE BATTERY HYDRAULIC MULTITOOL

### OVERVIEW

The S7G Series Battery Hydraulic 12-tonne pistol-style multitool is also portable, lightweight, and ergonomically designed.

The SLV Series Battery Hydraulic 6-tonne Inline-style multitool is portable, lightweight, versatile, and ergonomically designed for one-handed operation, making it ideal for use in confined spaces.

With the right attachments (sold separately), these tools can be converted into many different tools, functioning as a cable crimper, cable cutter, angle steel puncher, threaded rod cutter, or knockout puncher.

### FEATURES

- Upgraded Electronic Circuit Board
- Brushless 18V Motor with Overload Protection
- Ergonomic Design for One-Hand Operation (Inline)
- Swivel Head
- Pull Pin Head Design
- Ergonomic Design
- Made in Japan
- Compatible with Makita 18V Batteries
- Manufactured under ISO 9001

### STANDARD ACCESSORIES

- Wrist Strap SLV Series
- Shoulder Strap S7G Series
- Carry Case

### OPTIONAL ACCESSORIES

Model No.	Description
<b>BL1850B</b>	Makita 18v 5.0Ah Battery
<b>DC18RC</b>	Makita 230V Battery Charger
<b>DM18M</b>	Makita to Milwaukee Battery Adaptor



DC18RC



BL1850B



DM18M

### SPECIFICATIONS

Model No.	SLV-NDM	S7G-MX250M
Motor	Brushless 18V	Brushless 18V
Force at Die Face	70 kN	127 kN
Head Rotation	180°	275°
Dimensions (mm)	105 L x 374 H x 80 W	346 L x 328 H x 82 W
Weight	2.9 kg with BL1850B Battery (without crimp head)	4.0 kg with BL1850B Battery (without crimp head)



200AT-410 12-Tonne  
Crimp Head Sold Separately

Head Release Pin

Easy Pull Pin Design  
for Changing Heads

**S7G-MX250M**  
Pistol Multitool



**SLV-NDM**  
Inline Multitool








Simple Spring Loaded Twist Pin De-  
sign for Changing Heads



**CUTTING, CRIMPING & PUNCHING HEADS FOR S7G-MULTITOOL**



<b>200AT-410 12 Tonne Crimp Head</b> <ul style="list-style-type: none"><li>• Opening Between Die Faces: 17mm</li><li>• Maximum Capacity: 300mm<sup>2</sup> (AL/CU)</li><li>• Weight: 2.4kg</li><li>• Accepts existing 12-ton U-type Dies</li><li>• Refer to Page/s: 13-16 for 12T Dies</li></ul>	<b>200AT-50YC Cable Cutter Attachment</b> <ul style="list-style-type: none"><li>• Cutting Capacity: Up to 50mm O.D. Cable (Including Insulation)</li><li>• Cuts nonferrous cables only</li><li>• Weight: 1.0kg</li></ul>	<b>200AT-13WT Threaded Rod Cutter Attachment</b> <ul style="list-style-type: none"><li>• Cut:<ul style="list-style-type: none"><li>• M10 or 3/8 BSW Steel or SS Threaded Rod</li><li>• M12 or 1/2 BSW Steel or SS Threaded Rod</li></ul></li><li>• Includes: 13WT-07 M12 Blade Set</li><li>• Optional Blade Sets:<ul style="list-style-type: none"><li>• 13WT-06 M10</li><li>• 13WT-02 3/8 BSW</li><li>• 13WT-05 1/2 BSW</li></ul></li></ul>
		
<b>200AT-AP18 Angle Steel Puncher Attachment</b> <ul style="list-style-type: none"><li>• Supplied with 3 sets of Punch Dies (Max capacity: 6mm Mild Steel):<ul style="list-style-type: none"><li>• 10.5mm Diameter</li><li>• 13.5mm Diameter</li><li>• 17.5mm Diameter</li></ul></li><li>• Size (mm): 186 L x 130 H x 67 W</li><li>• Weight: 3.8kg</li><li>• Throat Depth: 47mm</li><li>• To Centre of Punch: 23.5mm</li></ul>	<b>200AT-9PD Knockout Puncher Attachment</b> <ul style="list-style-type: none"><li>• Punching Capacity:<ul style="list-style-type: none"><li>• Up to 63.5 mm diameter hole in Stainless Steel</li><li>• Up to 115.5 mm diameter hole in 3.0 mm thick Mild Steel</li></ul></li><li>• Punch &amp; die, Draw Studs &amp; Spacer Collars are the same as those used for SH-10</li><li>• 200AT-9PD Comes with Draw Studs &amp; Spacer Collars</li><li>• Refer to SF Representative for suitable dies</li></ul>	
		

**ORDERING INFORMATION**

Model No.	Description	S7G-MX250M	200AT-410 Crimp Head	200AT-50YC Cutting Head	200AT-13WT Cutting Head	200AT-AP18 Punching Head	200AT-9PD Punching Head	BL1850 Makita 18v 5.0Ah Battery	DC18RC Makita 230V Battery Charger
<b>S7G-MX250M</b>	12T Tool Only	1							
<b>S7G-MX250M(BB)</b>	12T Tool with Battery & Charger	1						2	1
<b>S7G-MX250M/410(BB)</b>	12T AL/CU Crimping Tool	1	1					2	1
<b>S7G-MX250M/50YC(BB)</b>	12T Cable Cutting Tool	1		1				2	1
<b>S7G-MX250M/13WT(BB)</b>	12T Threaded Rod Cutting Tool	1			1			2	1
<b>S7G-MX250M/AP18(BB)</b>	12T Steel Puncher	1				1		2	1
<b>S7G-MX250M/9PD(BB)</b>	12T Knock out Puncher	1					1	2	1

NOTE: All Tool Combinations Supplied with Case. Contact your Nearest Specialised Force Branch to Design your Own Kit.

## CUTTING & CRIMPING HEADS FOR SLV-MULTITOOL



SL-6CJ 6T Crimping Jaw:	SL-CH Cutting Jaw:	SL-ACSR Cutting Jaw:	SL-GW Cutting Jaw:
Accommodates 6-ton round type dies for crimping Cu, Al, ACSR & ABC. Up to 240mm <sup>2</sup> Capacity for Al, Cu and ACSR.	For cutting Al & Cu. Cutting capacity up to 32mm OD Cu/Al (300mm <sup>2</sup> ).	For cutting ACSR. Cutting capacity up to 20mm OD ACSR (Single Steel Core).	For cutting Al, Cu & ACSR. Cutting capacity up to 14.3mm for Cu, Al & ACSR.
			

NOTE: Jaws are sold separately.

## CUTTING SPECIFICATIONS

Kit Model No.	Style	Force (kN)	Cuts	Opening Ø (mm)	Maximum Cutting Capacity for Material Type (mm)*										
					Wire Rope 6x7	Wire Rope 6x12	Wire Rope 6x19	Soft Steel Bar	ReBar (400 to 500 Mpa)	Rebar (650Mpa)	AL Strands	CU Strands	ACSR	Guy Wire 1x7	Guy Wire 1x19
SLV-ND/ACSR(BB)	Scissor	70	Al/Cu/ ACSR	21	N/A	N/A	N/A	N/A	N/A	N/A	14	14	20	N/A	N/A
SLV-ND/CH(BB)	Scissor	70	Al/Cu	32	N/A	N/A	N/A	N/A	N/A	N/A	32	32	N/A	N/A	N/A
SLV-ND/GW(BB)	Scissor	70	Al/Cu/ ACSR	19.5	N/A	N/A	N/A	9.3	9.3	N/A	14.3	14.3	14.3	9.3	9.3

## ORDERING INFORMATION CUTTERS

Kit Model No.	Ram Stroke (mm)	Blade Opening (mm)	Reservoir Capacity (BB)	Dimensions (mm)	Weight Including Battery (kg)
SLV-ND/ACSR (BB)	-	21	45	554L x 110H x 80W	3.5
SLV-ND/CH(BB)	-	32	45	554L x 110H x 80W	3.5
SLV-ND/GW(BB)	-	19.5	45	554L x 110H x 8W	3.5

## ORDERING INFORMATION CRIMPERS

Model No.	Description	SLV-NDM Tool Only	SL-6CJ Crimp Head	SL-CH AL/CU Cutting Head	SL-ACSR ACSR Cutting Head	SL-GW AL/CU/ACSR Cutting Head	BL 1850 Makita 18v 5.0Ah Battery	DC18RC Makita 230V Battery Charger	6T-6mm Rounding Die	SL-CB Bending Tool
SLV-NDM	6T Tool Only	1								
SLV-NDM(BB)	6T Tool with Battery & Charger	1					2	1		
SLV-NDM/6CJ(BB)	6T Crimping Tool	1	1				2	1		
SLV-NDM/CH(BB)	6T AL/CU Cutting Tool	1		1			2	1		
SLV-NDM/6CJ/ACSR(BB)	6T Crimping & ACSR Cutting Tool	1	1		1		2	1		
SLV-NDM/ACSR(BB)	6T ACSR Cutting Tool	1			1		2	1		
SLV-NDM/GW(BB)	6T AL/CU/ACSR Cutting Tool	1				1	2	1		
SLV-NDM FENCING TOOL	6T Fencing Tool	1	1				2	1	1	
SLV-NDM/CB(BB)	6T Cable Bending Tool	1					2	1		1

NOTE: All Tool Combinations Supplied with Case. Contact your Nearest Specialised Force Branch to Design your Own Kit.  
Refer to Page/s: 12 for 6T Crimping Dies.

**MODEL No. SH-5PDG HYDRAULIC HAND PUNCH  
(MADE IN JAPAN)**



**CAPACITY**

- 90mm diameter hole in 3.2mm thick mild steel.
- 40.5 diameter hole in 3.2mm thick stainless steel.

**FEATURES**

The SH-5PDG is a portable hand hydraulic punch with swivel head for easy access to tight work areas.

**DETAILS**

- Self-contained hand hydraulic punch
- Ideal for switchboards
- Slim design

**SPECIFICATIONS**

Model No.	SH-5PDG
Output force (kN)	50
Rotation	2 Way 360°
Case Included	Steel
Weight (kg)	2.4

**MILD STEEL PUNCH KIT  
MODEL NO. SH-5PDGISOMS**

**INCLUDES:**

- 1 SH-5PDG Hand hydraulic punch
- 2 Draw studs (3/8" & 3/4") Model No. 10-04 & 10-05
- 4 Collars/Spacers (Large, Medium, Small, Ex-small)
- 1 Steel carrying case
- 7 Round Punching Dies Shark Brand 16.2, 20.4, 22.5, 25.4, 32.5, 40.5 & 50.8mm Diameter (3 crown style ISO)
- 1 Short Stud Adaptor (3/4" x 3/8") Model No. 10-14

**STAINLESS STEEL PUNCH KIT  
MODEL NO. SH-5PDGISOSS**

**INCLUDES:**

- 1 SH-5PDG Hand hydraulic punch
- 3 Draw studs (3/8", 7/16" & 3/4") Model No. 30043, 29451 & 29452
- 4 Collars/Spacers (Large, Medium, Small, Ex-small)
- 1 Steel carrying case
- 6 Round Punching Dies Shark Brand 16.2, 20.4, 22.5, 25.4, 32.5 & 40.5mm Diameter (twin cutting edges ISO)
- 1 Short Stud Adaptor (3/4" x 3/8") Model No. 10-14



Our mild steel punches have 3 cutting crown edges and require less force to pull through than 4 crown punches



**MORE PUNCH & DIES FROM PAGE 30**



## MODEL No. SH-10 HYDRAULIC HAND PUNCH (MADE IN JAPAN)

### CAPACITY

- 104mm diameter hole in 3.2mm thick mild steel
- 63.5mm diameter hole in 3.2mm thick stainless steel

### FEATURES

The SH-10 is a hand pump with remote punching head on hose lead for flexibility.

### DETAILS

- Ideal for switchboards
- Slim and manoeuvrable design

### SPECIFICATIONS

Model No.	SH-10
Output force (kN)	81.5 (@ 685 Bar)
Oil Required (cc)	35
Dimensions (mm)	370 x 220 x 130
Kit Weight (kg)	9.0

## MILD STEEL PUNCH KIT MODEL No. SH-10ISOMS

### INCLUDES:

- 1 SH-10 Punch Head with HP-180N Hand Pump & Hose
- 2 Draw studs (3/8" & 3/4") Model No. 10-04 & 10-05
- 3 Collars/Spacers (Large, Medium & Small)
- 1 Steel carrying case
- 7 Round Punching Dies Shark Brand 16.2, 20.4, 22.5, 25.4, 32.5, 40.5 & 50.8mm Diameter (3 crown style ISO)
- 1 Short Stud Adaptor (3/4" x 3/8") Model No. 10-14

## STAINLESS STEEL PUNCH KIT MODEL No. SH-10ISSO

### INCLUDES:

- 1 SH-10 Punch Head with HP-180N Hand Pump & Hose
- 3 Draw studs (3/8", 7/16" & 3/4") Stainless Steel Model No. 10-04, 29451 & 29452
- 3 Collars/Spacers (Large, Medium & Small)
- 1 Steel carrying case
- 7 Round Punching Dies Shark Brand 16.2, 20.4, 22.5, 25.4, 32.5 & 40.5 & 50.8mm Diameter (twin cutting edges ISO) (63.5mm Punch and Die Sold separately)
- 1 Short Stud Adaptor (3/4" x 3/8") Model No. 10-14



Our mild steel punches have 3 cutting crown edges and require less force to pull through than 4 crown punches



**MORE PUNCH & DIES FROM PAGE 30**

## HYDRAULIC KNOCKOUT PUNCH DRIVER

The 1681-RS includes a higher capacity 12 tonne (120kN) hydraulic cylinder for punching larger diameter holes through thicker material than standard knockout punch drivers. The Riken 1681-RS Punch Driver includes draw studs to suit commonly available knockout punches including Shark, Daia and Greenlee punch & dies.



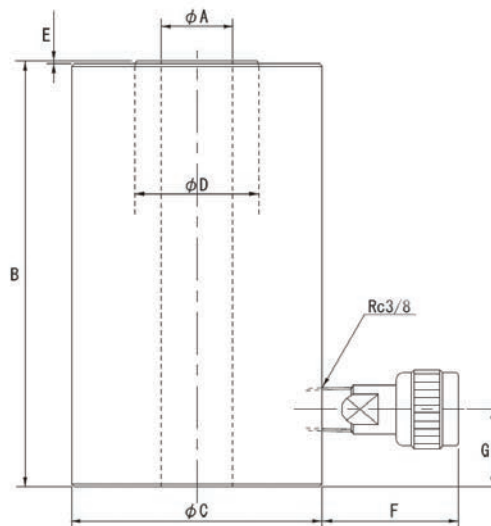
**RIKEN**

Model Number		1681-RS
Type		Port Punch
Usable Thickness	AL	6.3mm (50.8mm Hole Max)
	MS-SS	1.6 - 3.0mm
Hole Capacity	Round Hole	15-120mm OD
	Square Hole	20-92mm □
Pump Type		P-16B
Hose Type		H3/8-2S
Cylinder Type*		SC1.2-40S
Shaft	Round Cutters	SPR-3/8 x 3/4
		SPR-3/4 x 3/4
Nut		NUT-3/4
Washer		WP-10 • 20 • 30

\*See Below for Cylinder Specifications

## CYLINDER SPECIFICATIONS

Model Number		SC1.2-40S
Max Operating Pressure	MPa	70
Max Output	kN	120
	Tonne	12
Effective Area	cm <sup>2</sup>	17.86
Stroke	mm	40
Centre Hole Diameter	A (mm OD)	19.5
Minimum Overall Length	B (mm)	126.5
Inner Diameter of Cylinder	mm OD	54
Outside Diameter of Cylinder	C (mm OD)	70
Piston Diameter	D (mm OD)	35
Piston Ejection Length	E (mm)	1.5
Coupler Ejection Length	F (mm)	17
Coupler Position	G (mm)	40
Coupler Connection Diameter	-	Rc3/8
Necessary Oil Level	cm <sup>3</sup>	72
Weight (Approx)	kg	3.0



## MODEL NO. LS100L (BB) BATTERY PUNCH (MADE IN GERMANY)



The 100kN LS100L Battery powered Punch Driver from Greenlee is the fastest, most powerful knockout driver available on the market today. Easily punch up to 150mm size holes in mild steel and 115mm holes in stainless steel. Using integrated smart-technology senses when the punch cycle is complete it automatically shuts off, extending tool life and preventing damage to the punch and die.

### FEATURES

- Up to 2x faster cycle time
- Powerful 100kN(10 Tonne) punch force
- Compact & ergonomic
- 360° rotating head punches at any angle
- Lightweight at 2.63kg
- "Auto-Stop" avoids damage to punch
- Led light for dark areas
- 18V Li-Ion Makita Battery
- Easy one-handed operation with ergonomic tapered grip
- 8 second maximum cycle time

### PUNCHING CAPACITY

Material	Punch Size (mm OD)	Material Thickness (mm)
Mild Steel	100	3.0
	150	2.5
	76	3.0
Stainless Steel	115.4	2.0



SCAN & PLAY

Punches & Dies Sold Separately

### SPECIFICATIONS

#### SQUARE HOLES TO 92MM ☐

Kit Model No.	Dimensions	Battery	Force (Tonne)	Wt (kg) TOOL ONLY
LS100L(BB)	370x120x80mm	Makita® 18VDC (Lithium-Ion)	10	2.63

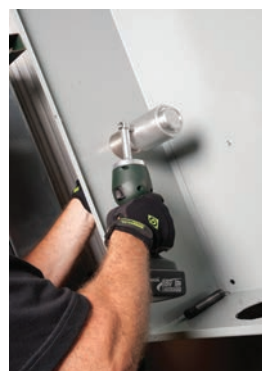
### KIT CONTENTS

Model No.	Description
03138	LS100L Punch Driver & Case (LS100LB)
52176	2 x Battery 18V Li-Ion 3.0Ah
52179	Charger, Battery Li-Ion 230VAC
20963	Draw Stud 3/8" (3/4" Bottom) x 122mm Long
10109	Draw Stud 3/4" x 136.5mm Long (2113B)
03248	Spacer - Short (1924AA)

### ACCESSORIES

MILD STEEL	
Model No.	Description
03170	(1557AA) - 28.6mm Dia x 76mm long sleeve. Used to punch 102.7x115.4mm Greenlee brand punch dies

STAINLESS STEEL	
Model No.	Description
29451	Draw Stud - For punching holes up to 22.5mm
29452	Draw Stud - For punching holes up to 28.3 to 90mm
00785	(1557SS) - 28.6mm Dia x 76mm long sleeve used to punch 102.7x115.4mm Greenlee brand S/Steel punch & dies





## MODEL No. SH-70B (MADE IN JAPAN)

### FEATURES

The portable SH-70B punch was designed to punch holes through 13mm mild steel, aluminium and copper with a 20.5mm maximum hole.

A stripper guide extends on either side of the ram to strip the material after punching. The stripper guide also clamps the punch into place to free operators hands for safety.

The SH-70B comes complete with four sets of Mild Steel punch and die sizes, 10.5mm, 13.5mm, 17.5mm and 20.5mm. This powerful punch has a new designed support stand, comes with a 70E-08 cap nut tightening pin and steel carrying case.

Keyed shaft facilitates slotted and squared punches.

### SPECIFICATIONS

Model No.	SH-70B
Operating Pressure (bar)	700
Output force (kN) @ 700bar pressure	304
Oil Required (cc)	82
Throat Depth (mm)	70
Dimensions (mm)	360 (H ) x 210 (W) x 95 (D)
Weight (kg)	14
Material Thickness (mm)	13

### PUNCH & DIES

Refer below table for punch and dies available, some half sizes are stocked.

**20.5mm is the maximum hole size and 6mm is the minimum hole size.**  
**Suffix "ST" is for Steel and "CU" is for Copper**

Model No.	Description	Model No.	Description
SH-70B6PDCU	6MM PUNCH AND DIE CU	SH-70B14PDCU	14MM PUNCH AND DIE CU
SH-70B6PDST	6MM PUNCH AND DIE ST	SH-70B14PDST	14MM PUNCH AND DIE ST
SH-70B7PDCU	7MM PUNCH AND DIE CU	SH-70B15PDCU	15MM PUNCH AND DIE CU
SH-70B7PDST	7MM PUNCH AND DIE ST	SH-70B15PDST	15MM PUNCH AND DIE ST
SH-70B8PDCU	8MM PUNCH AND DIE CU	SH-70B16PDCU	16MM PUNCH AND DIE CU
SH-70B8PDST	8MM PUNCH AND DIE ST	SH-70B16PDST	16MM PUNCH AND DIE ST
SH-70B9PDCU	9MM PUNCH AND DIE CU	SH-70B17PDCU	17MM PUNCH AND DIE CU
SH-70B9PDST	9MM PUNCH AND DIE ST	SH-70B17PDST	17MM PUNCH AND DIE ST
SH-70B10PDCU	10MM PUNCH AND DIE CU	SH-70B175PDCU	17.5MM PUNCH AND DIE CU
SH-70B10PDST	10MM PUNCH AND DIE ST	SH-70B175PDST*	17.5MM PUNCH AND DIE ST
SH-70B105PDCU	10.5MM PUNCH AND DIE CU	SH-70B18PDCU	18MM PUNCH AND DIE CU
SH-70B105PDST*	10.5MM PUNCH AND DIE ST	SH-70B18PDST	18MM PUNCH AND DIE ST
SH-70B11PDCU	11MM PUNCH AND DIE CU	SH-70B19PDCU	19MM PUNCH AND DIE CU
SH-70B11PDST	11MM PUNCH AND DIE ST	SH-70B19PDST	19MM PUNCH AND DIE ST
SH-70B12PDCU	12MM PUNCH AND DIE CU	SH-70B20PDCU	20MM PUNCH AND DIE CU
SH-70B12PDST	12MM PUNCH AND DIE ST	SH-70B20PDST	20MM PUNCH AND DIE ST
SH-70B13PDCU	13MM PUNCH AND DIE CU	SH-70B205PDCU	20.5MM PUNCH AND DIE CU
SH-70B13PDST	13MM PUNCH AND DIE ST	SH-70B205PDST*	20.5MM PUNCH AND DIE ST
SH-70B135PDCU	13.5MM PUNCH AND DIE CU		
SH-70B135PDST*	13.5MM PUNCH AND DIE ST		

\*INCLUDED IN SH-70B KIT

**IZUMI**



Steel



Copper



**IDEAL FOR  
TRANSMISSION  
TOWERS**

## KNOCKOUT PUNCH & DIES (MADE IN JAPAN)

For use with a hydraulic punch driver. A premium grade of mild & stainless steel punch & dies, both of which are designed to resist wear to ensure accurate holes and long punch life. In Australia they are commonly referred to as chassis punches.



### MILD STEEL ROUND PUNCHES

Made from high grade tool steel, our mild steel punches have 3 cutting crown edges and require less force to pull through than 4 crown punches. The 3 edges also provide excellent stability whilst allowing material to be easily removed from the die after punching.

Description	Crown Style Punch	
Type	MILD STEEL/BRASS/ALUMINIUM (Max 3.2mm Thick)	
Round Hole Size (mm)	Model No.	Draw Stud Used
16.2	PD-16.2MS	10-04 OR 30043 – 3/8"
20.4	PD-20.4MS	10-04 OR 30043 – 3/8"
22.5	PD-22.5MS	10-04 OR 30043 – 3/8"
25.4	PD-25.4MS	10-04 OR 30043 – 3/8"
32.5	PD-32.5MS	10-05 OR 03294 – 3/4"
40.5	PD-40.5MS	10-05 OR 03294 – 3/4"
50.8	PD-50.8MS	10-05 OR 03294 – 3/4"
63.5	PD-63.5MS	10-05 OR 03294 – 3/4"



### STAINLESS STEEL ROUND PUNCHES

Made from premium grade oil hardened tool steel.

Description	Twin Cutting Edges Cuts Slugs in Half	
Type	STAINLESS STEEL/MILD STEEL/BRASS/ALUMINIUM (Max 3.2mm Thick)	
Round Hole Size (mm)	Model No.	Draw Stud Used
16.2	PD-16.2SS	30043 – 3/8" (1.6mm Thick)
20.4	PD-20.4SS	29451 – 7/16" (2.5mm Thick)
22.5	PD-22.5SS	29451 – 7/16" (2.5mm Thick)
25.4	PD-25.4SS	29451 – 7/16" (2.5mm Thick)
32.5	PD-32.5SS	29452 – 3/4"
40.5	PD-40.5SS	29452 – 3/4"
50.8	PD-50.8SS	29452 – 3/4"
63.5	PD-63.5SS	29452 – 3/4"



Model No.	Description
PD-SET-MS	Mild Steel Punch & Die Set, Includes 7 Sizes: 16.2, 20.4, 22.5, 25.4, 32.5, 40.5 & 50.8mm
PD-SET-SS	Stainless Steel Punch & Die Set, Includes 7 Sizes: 16.2, 20.4, 22.5, 25.4, 32.5, 40.5 & 50.8mm

### SQUARE PUNCHES

Type	BRASS/ALUMINIUM/ETC (Max 3.2mm Thick)	
SQUARE Hole Size (mm)	Model No.	Draw Stud Used *
25.4	PD25.4-SQ	03S0034060 (1/2" X 3/4")
45	PD45-SQ	03S0036060
46	PD46-SQ	03S0036060
68	PD68-SQ	03S0036060
92	PD92-SQ	03S0036060

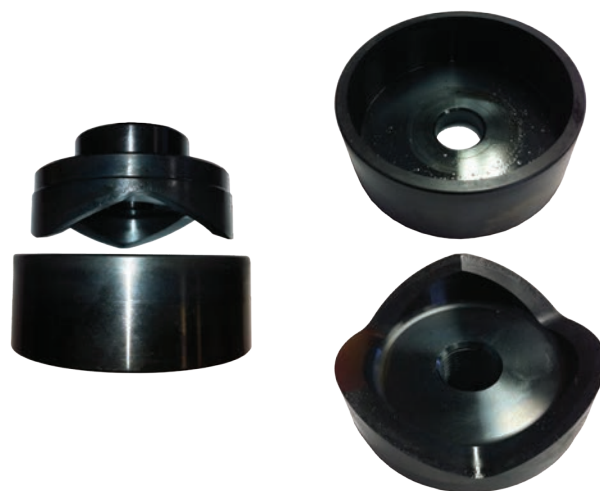
\*Note that Square Punches are supplied with Draw Stud



## KNOCK OUT PUNCH & DIES (MADE IN JAPAN)

For use with hydraulic punch driver. A premium grade range of punch & dies manufactured from high grade tool steel for mild steel, ensuring accurate holes and long punch life. For mild steel up to 3.2mm thick.

Round Hole Size (mm)	Model No.	Draw Stud Used (UNF)
21.9	16	3/8
20.0	19	3/8
26.3	25	3/8
27.4	22	3/4
32.7	31	3/4
34.2	28	3/4
39.0	39	3/4
42.8	36	3/4
48.7	42	3/4
51.7	51	3/4
60.5	54	3/4
64.4	63	3/4
76.0	70	3/4
77.1	75	3/4
88.8	82	3/4
102.5	92	3/4
115.2	104	3/4



## JIM SERIES KNOCK OUT PUNCH & DIES (MADE IN JAPAN)

Riken high quality metal punch and dies are manufactured from hardened fine alloy tool steel. The punches feature three cutting edges that provide stability and reduce damage to cutting edges. Punches have precision designed cutting edges for long cutting life.

**106 sizes available in full sizes 15mm-120mm OD  
(Increments of 1mm)**

### ORDERING INFORMATION

For quotation or ordering information model numbers use prefix code "JIM" plus "-" and actual size in millimetres "XX"

- For example, a 46mm punch and die set will be model no. **JIM-46**
- For example, a 115mm punch and die set will be model no. **JIM-115**

### PUNCH & DIE SIZE

(mm OD)	Draw Stud Size (" / Inches UNF)
15-26	3/8
27-120	3/4

NOTE: Punch and die supplied as set, not available individually.  
Requires punch unit (manually operated, hydraulic, battery, electric) with draw stud to utilise





## SLUG SPLITTER SC KNOCKOUTS

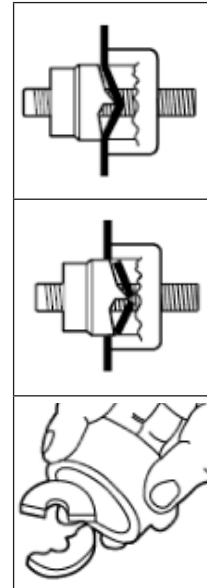
**SLUG SPLITTER**



### FEATURES

#### Slug-Splitter SC™ (Self-Centering) Knockout Punches

- Slug-Splitter SC™ heavy-duty punches are designed to punch up through 3.5 mm stainless steel.
- Unique slug-splitting design and tool steel construction easily punch 3.5 mm mild steel and stainless steel.
- Self-centering punch aligns itself on pilot hole. (Slug-Splitter SC™)
- No need to draw crosshairs or line up die alignment marks. (Slug-Splitter SC™)
- Unique punch profile also splits slugs for easier slug removal.
- Heavy-duty dies and stainless steel draw studs for longer life.
- Excellent abrasion resistance for punching fibreglass and plastic.
- Slug-Splitter SC™ punch units consist of: punch, die and draw stud. Check individual punch for specific capacity.
- Patent Pending for Self-centering Slug-Splitter SC™.



Unique Slug-Splitter SCTM punch design creates slug as the punch is drawn into the die.

Slug is split in half as punching operation is completed.

Split slugs fall free from the die and stud.

### SPECIFICATIONS

Application	3.5mm stainless steel, mild steel, fibreglass and plastic, etc
Operation	Operate with battery, hydraulic or high leverage ratchet driver only.

### SELF CENTERING

Model No. Punch	Model No. Die	Hole Size $\varnothing$ (mm)	Capacity Stainless Steel (mm)	Draw Studs
Slug-Splitter SC (Self Centering) Knockout Punches				
28154	28155	22.5	3.5	- 29451
28156	28157	28.3	3.5	31872 29452
36490	36489	30.5	3.5	31872 29452
28158	28159	34.6	3.5	31872 29452
28160	28161	43.2	3.5	31872 29452
28162	28163	49.6	3.5	- 29452
28165	28166	61.5	3.5	- 29452

### STANDARD

Model No. Punch	Model No. Die	Hole Size $\varnothing$ (mm)	Capacity Stainless Steel (mm)	Draw Studs	Sleeve
04599	04598	16.2	2.5	29451 29451	-
31119	31128	18.6	2.5	29451 29451	-
31120	31129	20.4	2.5	29451 29451	-
04602	04601	25.4	3.5	31872 29452	-
04605	04603	32.5	3.5	31872 29452	-
31122	31135	37.0	3.5	31872 29452	-
04608	04607	40.5	3.5	31872 29452	-
31123	31131	47.0	3.5	- 29452	-
04611	04609	50.8	3.5	- 29452	-
31124	31132	54.0	3.5	- 29452	-
31125	31133	60.0	3.5	- 29452	-
04614	04613	64.0	3.5	- 29452	-
00622	00626	74.0	3.5	31872 29452	-
00623	00627	89.9	3.5	31872 29452	-
00624	00629	102.7	3.5	31872 29452	00785 (1557SS)
00625	00630	115.4	3.5	31872 29452	00785 (1557SS)

## SLUG-BUSTER® KNOCKOUT (MADE IN THE USA)



1.

Unique Slug-Buster® punch design creases slug as the punch is drawn into the die.

2.

Slug is split in half as punching operation is completed.

3.

Split slugs fall free from the die and stud.



### FEATURES

- The contractor's choice – worldwide.
- Unique punch profile also splits slugs for easier slug removal.
- Use with battery-powered, hydraulic or manual operation.
- Uses standard Greenlee dies and draw studs.
- Slug Buster punches available in sizes up thru 64.0 mm.

### SPECIFICATIONS

Capacity

3.0mm Punch mild steel, aluminium, fibreglass and plastic

## SLUG-BUSTER SC FOR USE WITH SPANNER OR WRENCH HAND OPERATED

### FEATURES

- Save time and ensure accuracy!  
Self-centering punch aligns itself on pilot hole.
- No need to draw crosshairs or line up die alignment marks.
- Unique punch also splits slugs for easier slug removal.
- US Patent No. 6,973,729



**SLUG-BUSTER®**

### SPECIFICATIONS

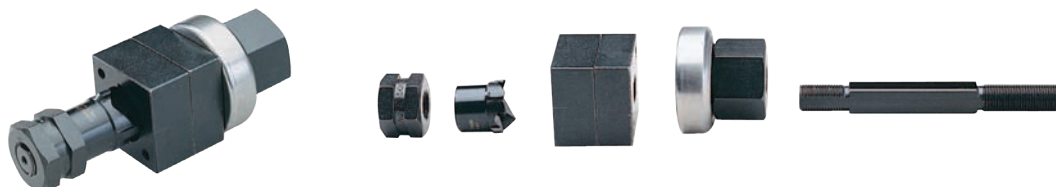
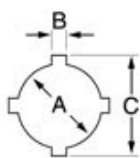
Model No.	Hole Sizes	Weight (Unit)	Punch Only	Die Only	Stud Only
	Ø (mm)	g	Model No.	Model No.	Model No.
10801	22.2	137	11361	14722	00042
10802	28.3	363	11362	06972	04040
10807	30.5	408	11357	36278	04040
10803	34.6	454	11363	04011	04040
10804	43.2	590	11364	04013	04040
10805	49.6	953	11365	04061	04042
10806	61.4	1043	11366	04063	04042



For Punch, Die and Draw Stud  
details refer to QR code

## SPECIAL APPLICATION HAND OPERATED PUNCHES

### OILTIGHT PUNCHES WITH NOTCHES

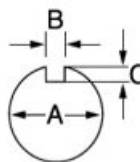


### SPECIFICATIONS

Hole Size mm			Max Capacity		Operation Type	Model No.					Min Pilot Hole mm
A	B	C	Mild Steel mm			Complete Punch Unit*	Punch	Die	Draw Stud	Counter Nut	
			SS	MS							
22.5	3.2	25.4	2.0	2.4	Hyd	44352	44390	44376	44413	04445	15.9
30.5	4.8	36.0	2.0	2.4	Hyd	44369	44406	44383	44413	04445	15.9

\* Contains Punch, Die, Draw Stud & Counter Nut

### KEY PUNCHES



### SPECIFICATIONS

Hole Size mm			Max Capacity Mild Steel mm	Operation Type	Model No.						Min Pilot Hole mm	Weight Kg	Optional Adapt for Hyd Drive
A	B	C			Complete Punch Unit*	Punch	Die	Draw Stud	BB Drive Nut	Counter Nut			
12.2	1.4	0.8	1.5	Hand-Hyd	60101	60102	60103	60115	60120	05244	9.5	0.4	60114 ◇
29.7	3.1	2.5	2.0	Hand-Hyd	60104	60105	60106	60166	60165	60258	23.8	1.0	60167 ◇
32.1	4.0	2.5	2.0	Hand-Hyd	60107	60108	60109	60166	60165	60258	23.8	1.1	60167 ◇
33.7	2.6	2.5	2.0	Hand-Hyd	60110	60111	60112	60166	60165	60258	23.8	1.1	60167 ◇

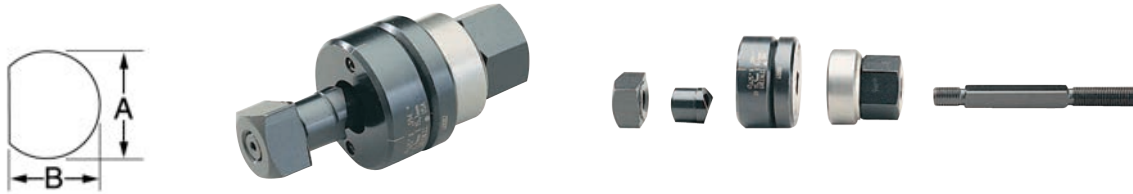
◇ For Maximum Draw Stud Life, Hydraulic or Battery Drivers are Recommended

\* Contains Punch, Die, Draw Stud, BB Drive Nut & Counter Nut



## SPECIAL APPLICATION HAND OPERATED PUNCHES

### "D" PUNCHES



### SPECIFICATIONS

Hole Size mm		Max Capacity Mild Steel mm	Op. Type	Model No.						Min Pilot Hole mm	Weight Kg	Optional Adapt for Hyd Drive
A	B			Complete Punch Unit*	Punch	Die	Draw Stud	BB Drive Nut	Counter Nut			
12.7	11.9	2.0	Hand-Hyd	60077	60078	60079	60115	60120	05244	9.5	0.41	60114 ◇
5.9	15.1	2.0	Hand-Hyd	61080**			34421	34733	04638	12.7	0.50	33967 ◇
19.1	17.9	2.0	Hand-Hyd	61083**			34421	34733	04638	12.7	0.50	33967 ◇

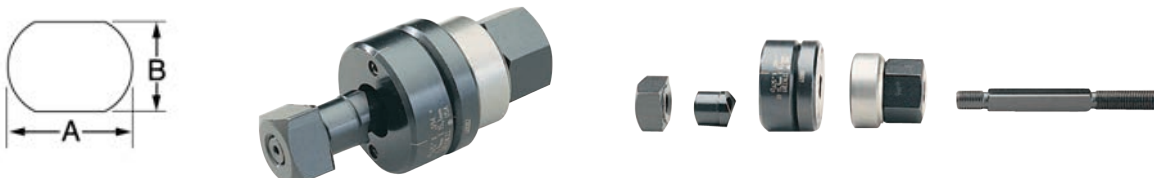
◇ For use with any Greenlee Hydraulic Driver or Battery-Powered Driver

\* Contains Punch, Die, Draw Stud, BB Drive Nut & Counter Nut

\*\* Sold as Unit only

For Maximum Draw Stud Life, Hydraulic or Battery Drivers are Recommended

### DOUBLE "D" PUNCHES



### SPECIFICATIONS

Hole Size mm		Max Capacity Mild Steel mm	Op. Type	Model No.				Min Pilot Hole mm	Weight Kg	Optional Adapt for Hyd Drive
A	B			Complete Punch Unit*	Draw Stud	BB Drive Nut	Counter Nut			
19.5	16.3	2.0	Hand-Hyd	61086**	34421	34733	04638	12.7	0.50	33967 ◇
20.2	17.6	2.0	Hand-Hyd	61089**	34421	34733	04638	12.7	0.50	33967 ◇
23.2	19.2	2.0	Hand-Hyd	61092**	34421	34733	04638	12.7	0.54	33967 ◇
23.2	20.2	2.0	Hand-Hyd	61095**	34421	34733	04638	12.7	0.90	33967 ◇
34.9	28.6	2.0	Hand-Hyd	60098**	60166	60165	60258	23.8	1.10	60167 ◇

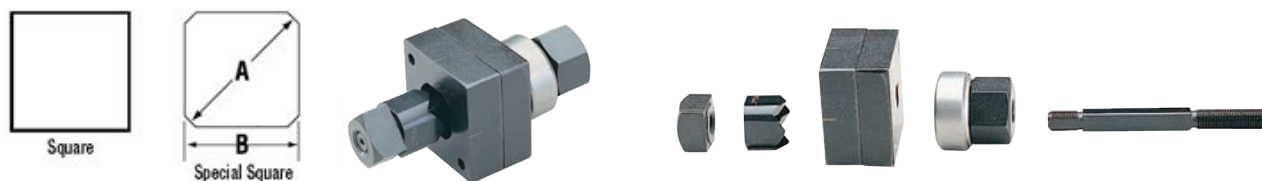
◇ For use with any Greenlee Hydraulic Driver or Battery-Powered Driver

\* Contains Draw Stud, BB Drive Nut & Counter Nut

\*\* Sold as Unit only

For Maximum Draw Stud Life, Hydraulic or Battery Drivers are Recommended

**SQUARE AND SPECIAL SQUARE PUNCHES  
(MADE IN THE USA)**



**SPECIFICATIONS**

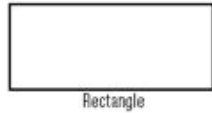
Hole Size mm	Max Capacity Mild Steel mm	Op. Type	Model No.						Min Pilot Hole mm	Weight Kg	Optional Adapt for Hyd Drive
			Complete Punch Unit *	Punch	Die	Draw Stud	BB Drive Nut	Counter Nut			
12.7	1.5	Hand-Hyd	60001	60002	60003	60115	60120	05244	9.5	0.50	60114◇
15.9	2.0	Hand-Hyd	61004	60005	60006	34421	34733	04638	12.7	0.68	33967◇
19.1	2.0	Hand-Hyd	61007**	-	-	34421	34733	04638	12.7	0.68	33967◇
22.4	2.0	Hand-Hyd	61010**	-	-	34421	34733	04638	12.7	0.82	33967◇
24.0	2.0	Hand-Hyd	61013**	-	-	34421	34733	04638	12.7	1.0	33967◇
50.8	3.5	Hyd Only	60168	60169	60170	60118	-	60235	30.2	3.1	◇
104.8	3.5	Hyd Only	60177	60178	60179	60118	-	60235	30.2	8.5	*
138.0	2.0	Hyd Only	60234	60023	60024	60118	-	60235	30.2	9.1	*
Special Square											
A=22.5 B=20.1	2.0	Hyd Only	61125**			34421	34733	04638	12.7	0.3	33967

\* For use with with Hand and Foot Pump Hydraulic Drivers with Ram

◇ For Maximum Draw Stud Life, Hydraulic or Battery Drivers are Recommended

\*\* Sold as Unit only

## RECTANGULAR PUNCHES (MADE IN THE USA)



## SPECIFICATIONS

Hole Size	Max Capacity Mild Steel mm	Op. Type	Model No.						Min Pilot Hole mm	Weight Kg	Optional Adapt for Hyd Drive
			Complete Punch Unit*	Punch	Die	Draw Stud	BB Drive Nut	Counter Nut			
11.1x22.2	1.5	◇Hand-Hyd	60025	60026	60027	60115	60120	05244	9.5	0.50	60114◇
17.0x19.0	2.0	◇Hand-Hyd	61028	60029	60030	34421	34733	04638	12.7	0.68	33967◇
19.1x29.0	2.0	◇Hand-Hyd	60031	60032	60033	60117	60165	60258	15.9	1.00	60167◇
19.1x33.3	2.0	◇Hand-Hyd	60034	60035	60036	60117	60165	60258	15.9	1.00	60167◇
21.9x25.9	2.0	◇Hand-Hyd	60037	60038	60039	60117	60165	60258	15.9	1.00	60167◇
22.0x30.0	2.0	◇Hand-Hyd	60040	60041	60042	60117	60165	60258	15.9	1.10	60167◇
22.0x42.0	2.0	◇Hand-Hyd	60043	60045	60046	60117	60165	60258	15.9	1.30	60167◇
25.1x29.0	2.0	◇Hand-Hyd	60047	60048	60049	60117	60165	60258	15.9	1.20	60167◇
31.8x35.1	2.0	◇Hand-Hyd	60050	60051	60052	60117	60165	60258	15.9	1.40	60167◇
33.3x67.9	3.5	◇Hyd Only	60053	60054	60055	60018	-	60235	30.2	2.30	◇
35.0x52.0	3.5	◇Hyd Only	60056	60057	60058	60018	-	60235	30.2	2.80	◇
35.0x65.0	3.5	◇Hyd Only	60059	60060	60061	60018	-	60235	30.2	3.10	◇
35.0x82.0	2.0	*Hyd Only	60062	60063	60064	60018	-	60235	30.2	3.50	*
35.0x112.0	2.0	*Hyd Only	60065	60066	60067	60018	-	60235	30.2	4.20	*
46.0x92.0	3.5	*Hyd Only	60068	60069	60070	60018	-	60235	30.2	4.00	*
57.2x88.9	3.5	*Hyd Only	60071	60072	60073	60018	-	60235	30.2	4.60	*
68.0x138.0	2.0	*Hyd Only	60074	60075	60076	60018	-	60235	30.2	7.30	*

\*For use with with Hand and Foot Pump Hydraulic Drivers with Ram

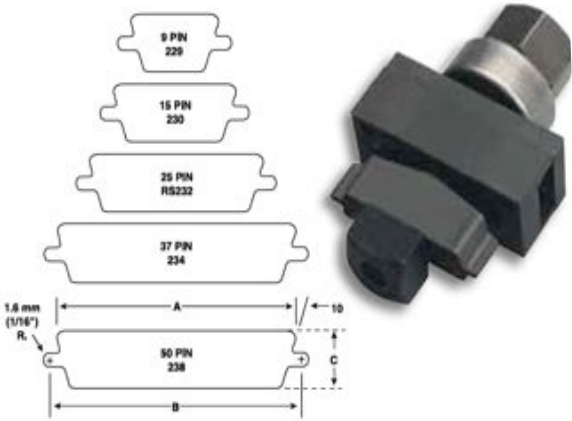
◇ For use with any Hydraulic Driver or Battery-Powered Driver For maximum draw stud life, we recommend the use of battery or hydraulic drivers



ELECTRONIC CONNECTOR PANEL PUNCHES

FEATURES

- Cut-out and mounting slots are punched in one operation.
- Drill only one 11.1 mm pilot hole.
- Fast, accurate panel punching with no sawing or filing required.
- Universal size punches for front or back mount of TRW Cinch and ITT Cannon-type or equivalent connectors in 9, 15, 25, 37 or 50-pin configurations.







SPECIFICATIONS

Capacity	1.5 mm mild steel; 3.5 mm aluminium
Operation	Manual with a wrench; hydraulic drivers, Battery Driver, Ram and Pump hydraulic drivers

Complete Punch Unit	No of Pins	Dimensions			Model No.					Weight
		A (mm)	B (mm)	C (mm)	Punch	Die	Draw Stud	Square Counter Nut	Drive Nut	Kg
34436	9	20.0	24.9	11.9	34441	35196	34421	04638	34733	0.64
34437	15	28.6	33.3	11.9	34442	35197	34421	04638	34733	0.68
34420	25	42.0	42.1	11.9	34418	35198	34421	04638	34733	0.91
34429	37	58.3	63.4	11.9	34427	35199	34421	04638	34733	0.91
34444	50	55.9	61.0	14.7	34443	35200	34421	04638	34733	0.91






## DRAW STUDS FOR MANUAL DRIVERS





Replacement Draw Stud Selection Guide. Refer to the pictures and information below when ordering a replacement draw stud.

Mid Section	Circular	Circular	Circular	Circular
Picture				
Model No.	04042	00042	04040	04218
Length (mm)	75.0	41.0	54.0	35.0
OD (mm)	19.0	9.5	19.0	6.4
Thread (UNF)	3/4	3/8	3/4	1/4
TPI (Threads per inch)	16	24	16	20

## DRAW STUDS FOR HYDRAULIC DRIVERS

Replacement Draw Stud Selection Guide. Refer to the pictures and information below when ordering a replacement draw stud.

Mid Section	Circular	Circular	Circular	Circular	Circular
Picture		 Stainless Steel		 Stainless Steel	
Model No.	10-04	30043	20963*	29451	10-14^ (ADAPTOR)
Length (mm)	76.0	71.0	120.0	110.0	45.0
OD (mm)	9.5	9.5	9.5	11.1	19.0 (9.5 INTERNAL)
Thread (UNF)	3/8	3/8	3/8 (3/4 Bottom)	7/16 (3/4 Bottom)	3/4 (3/8 INTERNAL)
TPI (Threads per inch)	24	24	3/8=24 3/4=16	7/16=20 3/4=16	3/4=16 3/8=24

Mid Section	Circular	Circular	Circular	Circular
Picture			 Stainless Steel	
Model No.	31872+	10-05	29452	10109 <
Length (mm)	114.3	135.0	140.0	136.5
OD (mm)	19.0	19.0	19.0	19.0
Thread (UNF)	3/4	3/4 (3/8 INTERNAL)	3/4	3/4"
TPI (Threads per inch)	16	3/4=16 3/8=24	16	16

\*Alternative #SMR-3/8x3/4    ^ Alternative #33967    + Alternative # 03294    < Greenlee Model 2113B

## DRAW STUDS FOR RATCHET DRIVERS & SPECIAL SQUARE PUNCHES (MADE IN THE USA)



Replacement Draw Stud Selection Guide. Refer to the pictures and information below when ordering a replacement draw stud.

Type	Special Shape Punches						
Mid Section	Hex						
Picture							
Model No.	60116	60117	34421	60115	60166	60118	60167 (ADAPTOR)
Length (mm)	127	127	90	87	117	171	40
OD (mm)	9.5	12.7	9.5	6.3	12.7	19.0	19.0 (12.7 INTERNAL)
Thread (UNF)	3/8	1/2	3/8	1/4	5/8	3/4	3/4 (1/2 INTERNAL)
TPI (Threads per inch)	24	20	24	28	18	16	3/4=16 1/2=20

## SPACERS FOR PUNCHING

Replacement spacers for punching. Refer to the pictures and information below when ordering a replacement spacer.

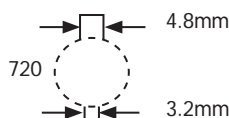
Model No.	Size
10-01	Large
10-02	Medium
10-03	Small
5PDF-48	Extra Small



## KEYWAY PUNCH (MADE IN THE USA)

### FEATURES

- Eliminates time-consuming hand sawing and filing when making keyways for push-button switches.
- Use as a nibbler to make wider or deeper keyways.
- Punches 3.2 mm or 4.8 mm keyways for 22.5 mm or 30.5 mm push-button holes.



### SPECIFICATIONS

Model No.	Description	Operation	Capacity	Weight Kg
26534	Keyway Punch	Manual	3.5mm	1.27
26536	(Replacement) Punch			
26538	(Replacement) Die			



## COMBINATION DRILL/TAP BITS (MADE IN THE USA)

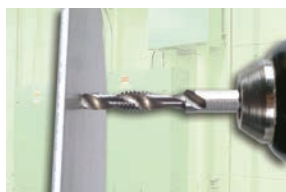
### FEATURES

- Drill, Tap, and Countersink in one easy to use bit.
- Tap holes up to 4X's faster than traditional methods.
- One-piece Drill/Tap design ensures proper hole size for threaded tap size.
- Available in kits and individual bits metric and imperial thread sizes.
- Constructed of hardened High Speed Steel.
- Long length Drill/Tap Bits tap up to 12.7 mm (1/2") thick material.
- Split-tip drills fast and resists walking.
- Back tapered beyond tap to prevent thread damage.
- Quickly deburrs and countersinks threaded hole.
- Fast, secure 1/4" Quick-Change hex shank.
- Quick-Change adapter included in Standard Length, Long Length, and Metric Drill/Tap Kits.
- For best results, use cutting oil with all Drill/Tap bits.



### SPECIFICATIONS

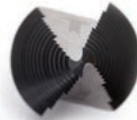
Model No.	Description	17620 DTAPKIT	12151 DTAPKITM
Kits			
12151	M3-M10, 6 Piece Drill/Tap Set		P
17620	6-32 to 1/4-20 6 Piece Drill Tap Set	P	
Individual & Replacements			
17611	6-32UNC	P	
17612	8-32UNC	P	
17613	10-24UNC	P	
17614	10-32UNC	P	
17615	12-24UNC	P	
17616	1/4-20UNC	P	
11627	5/16 x 18UNC		
11628	3/8-16UNC		
12160	M3 x 0.50		P
12161	M4 x 0.70		P
12162	M5 x 0.80		P
12163	M6 x 1.00		P
12164	M8 x 1.25		P
12165	M10 x 1.50		P



To extend the life of your tool, use Cutting/Threading Oil.

## GREENLEE COBALT STEP BITS (MADE IN USA)

Greenlee's XT Series Cobalt Step Bits are engineered for maximum life in stainless steel but also cuts mild steel, copper, brass, aluminium, fibreglass, plastic, wood and laminates. The dual-flute design and split point tip eliminates walking makes for faster drilling with less force. High speed cobalt steel maximises heat and abrasion resistance, the steam oxide finish runs cooler and extends the life of the bit. New split point tip penetrates 3.5mm stainless steel in 10 seconds.


 SCAN  
& PLAY

Model No	Max Material Thickness (mm)	Minimum Chuck Size (mm)	# Steps	Length (mm)	Hole Size (mm)	Hole Size (")
05789	3.5 Stainless Steel	9.5 (3/8")	13	78.2	3.2, 4.0, 4.8, 5.6, 6.4, 7.1, 7.9, 8.7, 9.5, 10.3, 11.1, 11.9, 12.7	1/8, 5/32, 3/16, 7/32, 1/4, 9/32, 5/16, 11/32, 3/8, 13/32, 7/16, 15/32, 1/2
05790			12	84.1	4.8, 6.4, 7.9, 9.5, 11.1, 12.7, 14.3, 15.9, 17.5, 19.1, 20.6, 22.2	3/16, 1/4, 5/16, 3/8, 7/16, 1/2, 9/16, 5/8, 11/16, 3/4, 13/16, 7/8
05792			3	87.4	12.7, 22.2, 28.6	1/2, 7/8, 1-1/8
05793			Kit All Above	Kit All Above	All Above	All Above

## KWIK STEPPER STEP BITS FOR MILD STEEL



### FEATURES

- Unique split-tip design penetrates through steel faster.
- Resists walking or skidding, even on round surfaces.
- Balanced, double-flute construction requires less pressure, does the work for you.
- Designed and manufactured in USA.

Model No.	Description
35884	Kwik Stepper Step Bit Kit
03607	Kwik Stepper Step Bit Kit

Model No.	Description	03607 Kit	35884 Kit
34401	12.7mm Multi-Hole Step Bit	✓	✓
34403	22.2mm Multi-Hole Step Bit	✓	✓
30008	28.6mm Multi-Hole Step Bit	✓	✓
35936	Plastic Case	✓	✓

## STEP BITS FOR MILD STEEL, PLASTICS, ETC NOT RECOMMENDED FOR STAINLESS STEEL

### SPECIFICATIONS

Single Hole Bits are designed to drill one indicated hole size through a series of steps from bit to tip size. Multi-hole bits allow you to drill a hole in any of the stated diameters													
mm	12.7	12.7	12.7	12.7	20.6	22.2	22.2	28.6	34.9	9.7	30.5	32.5	
Step Bit Hole Type	Single	Single	Multi	Multi	Multi	Multi	Multi	Multi	Multi	Multi	Multi	Multi	
Inch	mm	34410	34401	36402	30005	34411	34403	30008	36414	36018	36020	36022	
1/8	3.2		✓										

**PB SERIES HYDRAULIC PIPE BENDERS (MADE IN JAPAN)**



**FEATURES**

The PB-10N & PB-15N Benders were designed to bend various sizes and various thickness of steel pipes without wrinkles.

An aluminium alloy frame makes this bender lighter so that it can be easily carried to the job site.

Bending shoes are designed to bend gas pipe or steel electrical conduit - listed in the charts below.

For use with any 700-bar hydraulic single-acting high-pressure pump. Refer Section "C" of the Electrical catalogue.

**PLEASE NOTE:** Hydraulic Pump & Bending shoes are sold separately - unless otherwise indicated

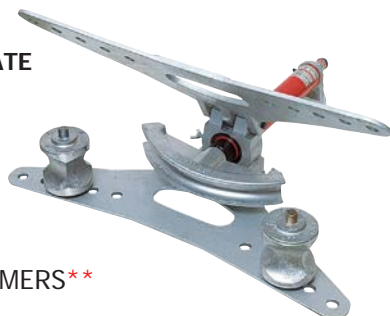
**SUITABLE CONDUITS & PIPES**

Model No.	PB-10N	PB-15N
Thin steel conduit (A)	A15 (5/8", 16mm) to A51 (2", 50mm) to 90° in one shot	A15 (5/8", 16mm) to A51 (2", 50mm) to 90° in one shot
Gas Pipe (SGP)	SGP15 (1/2", 21.3mm) to SGP50 (2", 60.3mm) to 90° in one shot	SGP15 (1/2", 21.3mm) to SGP100 (4", 114.3mm)

**SPECIFICATIONS**

Model No.	PB-10N	PB-15N
Capacity	15-50mm (1/2 - 2") Nominal Bore Pipe	15-100mm (1/2 - 4") Nominal Bore Pipe
Oil volume required	400cc	595cc
Output force	108kN	162kN
Ram stroke	250mm	250mm
Size	780mm Wide	900mm Wide
Weight	18.6kg (W/O PIVOT SHOES and BENDER SHOE)	28.8kg (W/O PIVOT SHOES and BENDER SHOE)
INCLUDES:	Frame, Cylinder, Pivot shoes (2 pieces) and Angle gauge	Frame, Cylinder, Pivot shoes (2 pieces) and Angle gauge

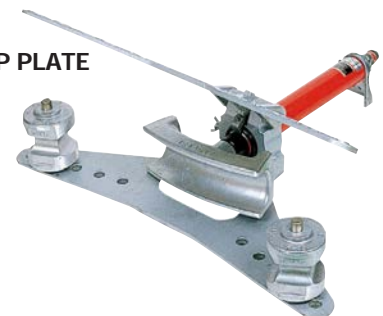
**HINGED TOP PLATE**



**MODEL NO.**

PB-10N  
PB-10N INC FORMERS\*\*

**HINGED TOP PLATE**



**MODEL NO.**

PB-15N

**BENDING SHOES STEEL CONDUIT**

Model No.	(mm) OD	Suits Model
A15	15.9	PB10N/15N
B16	21.0	PB10N/15N
A25	25.4	PB10N/15N
A31	31.8	PB10N/15N
B36	41.9	PB10N/15N
A51	50.8	PB10N/15N
*A63	63.5	PB15N
*A75	76.2	PB15N

\* Segmented bending required to produce a 90° bend

**BENDING SHOES GAS PIPE**

Model No.	(mm) OD	Suits Model
**SGP-15 - 1/2" GAS	21.3	PB10N/15N
**SGP-20 - 3/4" GAS	26.9	PB10N/15N
**SGP-25 - 1" GAS	33.7	PB10N/15N
**SGP-32 - 1 1/4" GAS	42.2	PB10N/15N
**SGP-40 - 1 1/2" GAS	48.3	PB10N/15N
**SGP-50 - 2" GAS	60.3	PB10N/15N
*SGP-65 - 2 1/2" GAS	76.3	PB15N
*SGP-80 - 3" GAS	89.1	PB15N
*SGP-90 - 3 1/2" GAS	101.6	PB15N
*SGP-100 - 4" GAS	114.3	PB15N



## BUS BAR EQUIPMENT



### HYDRAULIC BUS BAR CUTTER



Model No.	BBC-125	BBC-150
Working Pressure (Bar)	700	700
Output (Tonnes)	10	35
Weight (kg)	16	35

Bus Bar Capacity Cu & Al (mm)	125 x 12	150 x 15
----------------------------------	----------	----------

### HYDRAULIC BUS BAR BENDER



Model No.	B-200
Output (Tonnes)	11
Weight (kg)	20
Bus Bar Capacity (mm)	200 x 10 Cu 200 x 16 Al
Former Bending Radius (mm)	8 + 12 Cu 30 + 48 Al

Maximum Bending Angle	90° (Optional 90° Bending Block and 12mm former for bending repeat 90° bends is also available – Model No. B200/90)
-----------------------	---

### HYDRAULIC BUS BAR BENDER



Model No.	9046
Output (Tonnes)	30
Pressure (Bar)	700
Weight (kg)	192
Bus Bar Capacity (mm)	Punches bars up to 15 Cuts bars up to 160x15 Bends bars up to 200x20
Dimensions (mm)	1200 L x 700 W x 520 H
Adjustable Stroke (mm)	65
Supplied with	1m Rule, Set of Adaptors

Contact SF for more detail

### ASSOCIATED EQUIPMENT



DSPN-12AS 230V ELECTRIC HYDRAULIC PUMP

Refer page 44 for more detail (also refer pages 53-57 for other pumps)



SH-70B HYDRAULIC BUS BAR PUNCH

Refer to page 29

**BUS BAR FABRICATION (MADE IN GERMANY)**

Model No.	Type	Description
<b>39659</b>	Machine with Accessories & Power Pack	<b>SLB 125</b> "Package" incl. acc and Power Pack HA 3, includes 3 cutting & punching tools; 3 sets of punches & dies
<b>31425</b>	Optional Accessory	Small step bending tool
<b>31646</b>	Optional Accessory	Large step bending tool
<b>31636</b>	Optional Accessory	Short leg bender
<b>42430</b>	Optional Accessory	Special U-bender 60 mm

Can be easily dismantled and transported to site



**novopress**



SLB

Model No. SLB 125 Three in One Bus Bar Fabricating

Features	Advantages	Technical
The unique SLB 125 three-in-one busbar tool guarantees effortless cutting, bending and punching of aluminium and copper busbars. Whether in the work shop or at the construction site - the basic unit transforms into a cutting, bending- or punching machine within seconds. Busbar fabrication from a single mould: Precise, simple and quick.	<ul style="list-style-type: none"> <li>-Especially robust and stiff frame.</li> <li>-Very high quality cutting, bending and punching.</li> <li>-High operating safety with the built-in safety system.</li> <li>-Lightning-swift tool changes with a minimum of manipulation.</li> <li>-The 150 bar low-pressure system ensures a long service life and very fast cycle times.</li> <li>-Punches copper and aluminium busbars up to 13 mm thick, elongated holes up to 21 x 14 mm and round holes up to 21 mm in diameter.</li> <li>-Busbars bent accurately up to 120° very accurate reproducibility of the set angle.</li> </ul>	Depth 750 mm Width 750 mm Height 1.145 mm Weight 180 kg Operating Pressure 150 bar Force 180 KN Power rating 0.75 kW Voltage 230 V 1~/50 Hz Cutting max. 125 x 13 mm 250 N/mm2 Punching max. ø 21 mm Bending max. 125 x 13 mm 250 N/mm2



Model No. BGD-5eco The Digital Bending Bench

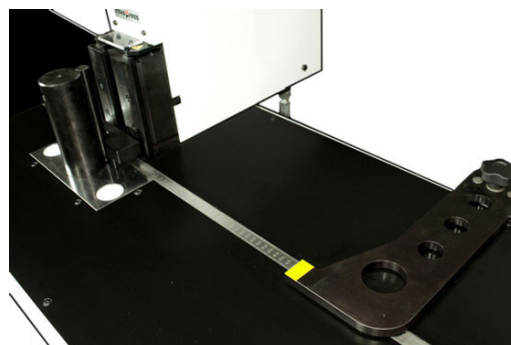
Features	Advantages	Technical
The BGD-5eco sets a new standard for bus bar bending with outstanding precision and speed at economical prices. No other bending machine will match it's range of features and performance at low entry price levels. Equipped with the essential – Digital Angle Encoder – the BGD-5eco offers unsurpassed simplicity and control with full automatic spring back compensation and bending accuracy to 0.2°. Consequently it will vanquish any need for trial bends and significantly reduce cost on faulty bend busbars. On top, the digital stroke encoder minimizes idle movement for the absolute shortest cycle times. Additional accessories like step or edge benders, are also easy and precisely controlled by the digital stroke encoder. The new integrated hydraulic power pack takes bending speeds to new levels – 11.5 seconds* – for a finished 90° bend including full automatic spring back compensation	<ul style="list-style-type: none"> <li>-Unsurpassed bending features at economic price.</li> <li>-Digital Angle Encoder with precision to 0.2°.</li> <li>-Full automatic spring back compensation.</li> <li>-No trial bends. No set up times.</li> <li>-Digital Stroke Encoder for minimum cycle times.</li> <li>-Supplied with built in high performance 3-phase power pack.</li> <li>-Optional step- and edge bending tools, for special bending applications.</li> <li>-Tight L-, U- and Z- bends possible.</li> <li>-Mobile machine on wheels for ease of use.</li> </ul>	Depth 950 mm Width 830 mm Height 1.330 mm Weight 170 kg Operating Pressure 200 bar Force 180 KN Bending capacity max. 160 x 13 mm (6° x 1/2°) Bending radius adaptors 7.5, 10, 15 mm Power rating 0.75 kW Voltage 415VAC 3~/50 Hz. Oil _ flow 3.6 l/min. Cycle time* 11.5 sec. Cycle time** (repeat operation) 9.4 sec. Minimum L-Bend 25 mm Minimum U-Bend 60 mm Minimum Z-Bend 70 mm * 90° bend, 120 x 10 mm busbar size, return stroke incl. full automatic spring back compensation. ** 90° bend, 120 x 10 mm busbar size repeated operation.

## BUS BAR FABRICATION (MADE IN GERMANY)

**novopress**



SCAN  
& PLAY



Model No. BGD-5.1 The Digital Bending Bench

### Features

**BGD-5.1 is the ideal bending machine for small series of busbars and individual bending work.**

During bending operation the digital angle measurement with full automatic spring back compensation, will ensure outstanding accuracy of  $\pm 0.25$  degrees.

The automatic length stop, will travel up to 800 mm, positioning your bus bar within seconds and a precision of 0.5 mm.

Last but not least, the integrated power pack takes care of convincing cycle times, at only 11.5 sec. for a full 90 degree bend including spring back compensation.

**The BGD-5.1 has a USB interface to which optional a PC can be connected.**

There is the possibility to program serial parts either directly on the machine or from your PC.

No CNC, or whatsoever programming skills are requested, but only the Novobend Software.

Even complicated busbars can be created using the Software Novobend and are displayed graphically on your PC before starting the initial bending operation.

### Advantages

Digital angle encoder with precision to  $\pm 0.25$  degrees

Full automatic spring back compensation

No trial bends. No set up times

Supplied with built in high performance 3-phase power pack

Optional step and edge bending tools, for special bending applications

Tight L-, U- and Z-bends possible

Programming of serial parts using the Novobend software (optional)

USB interface for connecting a PC

Mobile machine on wheels for ease of use

### Technical

Height	1,100mm	Power Rating	0.75kW
Depth	950mm	Voltage	400V 3~ / 50 Hz
Width	1,630mm	Oil Flow	3.6L/min
Weight	300kg	Cycle Time*	11.5sec
Operating Pressure	200bar	Cycle Time** (Repeat Operation)	9.4sec
Force	180kN	Minimum L-Bend	25mm
Bending Capacity Max.	160 x 13mm	Minimum U-Bend	60mm
Bending Radius Adaptors	7.5, 10, 15mm	Minimum Z-Bend	70mm

\* 90° bend, 120 x 10 mm busbar size, return stroke incl. full automatic spring back compensation.

\*\* 90° bend, 120 x 10 mm busbar size repeated operation.



## BUS BAR FABRICATION (MADE IN GERMANY)

### PUNCH

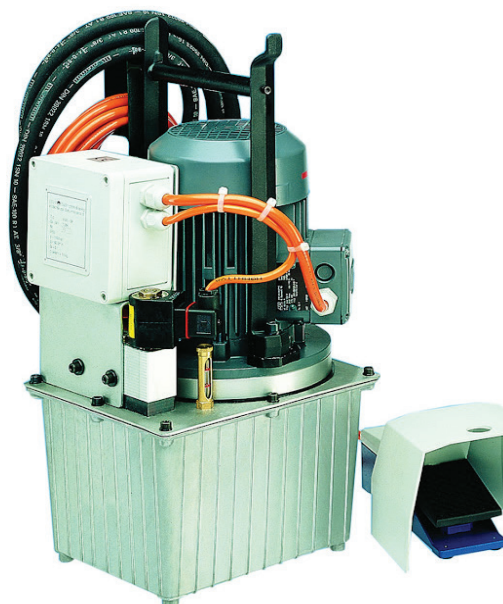
Model No.	Description
<b>40800</b>	HSBL-2 DigiPunch 160 (containing punch with digital measuring system, adjustable work-bench, 2 x 2 m conveyor system, supports for conveyors)



Model No. HSBL-2 DigiPunch 160		
Features	Advantages	Technical
With the brand-new "DigiPunch 160", Novopress offers a new class of busbar punching performance for medium sized Businesses. Wherever ordinary manual punches are insufficient and CNC-controlled machines are too costly, the new "DigiPunch 160" is the ideal mid-size solution. It reduces manufacturing time and cost significantly compared to manual punches at a very modest investment compared to CNC-punches. The very practical configuration with digital metering in X/Y axis and complete conveyors, enables a very efficient and flexible busbar manufacturing.	Significantly reduced manufacturing cost on medium to medium-large output volume. Optimized and speedy workflow through integrated conveyor system and work-bench. No programming or preparatory work required, very short set-up times. Fast and stepless positioning of busbars in X and Y axis, with 0.5 mm accuracy. Switching from absolute- to chain measurement for fast and easy progressive punching.	All necessary components except hyd. power pack and work cylinder are included in delivery. For operation only a regular 230VAC power source is needed. The LCD measuring system works on a permanent battery basis. Possible hydr. Power Packs: HA 1 - ES, HA 3 and HA 4.  Length 4.300 mm Width 550 mm Height 1.900 mm Weight 170 kg Operating pressure 150 bar Force 150 KN

### POWER PACK

Model No.	Description
<b>32530</b>	Power Pack HA 3
<b>33340</b>	Power Pack HA 3 incl. 24 V controls



Model No. Power Pack HA 3		
Features	Advantages	Technical
Leaders when it comes to switchgear manu facturing. Novopress hydraulic power packs are designed to operate at a low 150 bar over a wide range of applications. This design combines the clear advantages of increased work safety, and long service life for the tool and its attached devices. In addition, these hydraulic power packs are a byword for the high quality associated with all Novopress products.	For heavy duty applications and continuous production, the HA 3 Power Pack, is the professional choice. With a high performance drive and extended oil volume, the HA 3 is the ideal power pack for demanding busbar production, and/or continuous cable assembly. Available with or without 24 V controls for hand operated crimping tools.	Drive 230 V - 750 W, 4 A Weight 26 kg Height 550 mm Length 270 mm Width 260 mm Oil capacity 5.5 l Operation S 3 S 1= Safety class IP 55 Hydraulic hose 2.5 m Operating pressure 150 bar Oil flow 4.0 l/min.

## CABLE LENGTH METER

Used to measure the length of insulated copper or aluminium conductors on a spool, and to measure low resistance values.

- Automatic Power Off for maximum battery life
- Automatic temperature compensation for maximum accuracy
- Accurate to  $\pm 1.0$  to  $1.5\%$
- Display : Large Digit LCD
- Voltage Rating : Not intended for connection to live voltage
- Eight user-programmable settings for other sizes
- Powered by (6) 1.5V AA batteries
- Replacement calibration rods (pair) available as CLM-ROD, UPC 02721
- Replacement Kelvin clips (pair) available as CLM-CLIPS, UPC 02722



## SPECIFICATIONS

Model No.	02720 (CLM-1000E)
Description	Cable Length Meter for Metric Wire and Cable
Wire Sizes	0.75, 1, 1.5, 2.5, 4, 6, 10, 16, 25, 35, 50, 70, 95, 120, 150, 185, 240, 300, 400, 500 mm <sup>2</sup>
Length Measurement	5.0 m to 30.00 km (3 Ranges)
Resistance Measurement	199.99 m $\Omega$ to 1999.9 $\Omega$ (5 Ranges)



## NON-CONTACT VOLTAGE DETECTOR

Used to detect voltage in outlets, lighting fixtures, circuit breakers, wires, and cables or to find a break in a wire.

- **Patented Automatic Self -Test-** Verifies circuit integrity
- **Versatile Voltage Detection-** Use in outlets, lightning fixtures, circuit breakers, wires and cables
- **Clear Voltage Indication-** Audible and visual alerts when voltage is present
- **Bright Flashlight-** Illuminates dark work spaces
- **Auto Shutoff-** Automatically turns off after 5 min of inactivity
- **Low Battery Indication**
- **Ergonomic Grip & Button Location-** Optimized for comfort and end-of-use



## SPECIFICATIONS

Model No.	04718 (GT-13)
Type	Non-Contact Voltage Detector
Battery	2 x 1.5V AAA
Frequency	50/60 Hz
Measurement Category	CAT IV, 1000V
Voltage Rating	50V - 1000V AC
Standards	CE Compliant



Australian made Cable Drum Handling equipment to accommodate all sizes and types of Drums, for workshop and worksite operation.

### CABLE DRUM RAMPS Model No. DRR-1000

- Lightweight and transportable
- Folds flat for storage and transport
- Suits a wide range of Cable Drums 450-1,700mm in diameter
- Used in Industrial situation on flat ground
- Includes a safety bar, to stop the drum rolling off

Model No.	Description	Min/Max Drum Diameter (mm)	WLL (kg)	Weight (kg)
<b>DRR-1000</b>	CABLE DRUM RAMP	450/1700	1000	28 pair
Dimensions (mm)		1350 x 210 x 250 (LxWxH)		
Folded Dimensions (mm)		750 x 210 x 250 (LxWxH)		



DRR-1000 Shown Folded

### CABLE DRUM TROLLEY Model No. CDT-500

- Lightweight and transportable
- Folds flat for storage and transport
- Four Mounting Positions Suits a range of cable drums
- Used in Industrial situation with powder coated finish
- Includes two pneumatic wheels and one solid plastic wheel with brake
- Axle and four retaining collars

Model No. *	Description	Usable Axle Length (mm)	Axle Diameter (mm)	Drum Diameter (mm)		WLL (kg)	Weight (kg)
				Min	Max		
<b>CDT-500</b>	CABLE DRUM TROLLEY	900	50	750 Lowest Position	1500 Highest Position	250	42
Dimensions (mm)		1745 x 1285 x 1000 (LxWxH)					
Folded Dimensions (mm)		1340 x 1285 x 335 (LxWxH)					

Optional winding handle model available with drum fixing arm



CDT-500 Folds Down for Storage & Transport



### CABLE DRUM CADDY Model No. CDC-150

- Lightweight and transportable
- A combination of Rolled arches, self-lubricating Acetyl blocks and a cranking ratio of 7.9:1, aid with the lifting of cable drums
- Lifts drums up to 1200mm W x 950mm diameter
- Includes a Rubber/plastic wheel and two swivel wheels with brakes at the rear and 60mm Axle and two retaining collars

Model No.	Description	Max Drum Diam. (mm)	Max Drum Width (mm)	WLL (kg)	Weight (kg)
<b>CDC-150</b>	CABLE DRUM CADDY	950	1200	150	40
Dimensions (mm)		1410 x 1300 x 855 (LxWxH)			



CDC-150

### EASY ROLLER Model No. 52055384

- Robust yet lightweight design- zinc plated steel and spray coated
- Ramp with little down-grade for easy winding and unwinding
- Adjustment of castors to the diameter of cable drums
- Castor with integrated side guidance.
- Easy roller is already completely mounted (no mounting required)

Model No.	Description	Drum Diam. (mm)	Load (kg)	Weight (kg)
<b>52055384</b>	EASY ROLLER	200-700	250	11
Dimensions (mm)		605 x 710 x 95 (LxWxH)		



52055384





Australian made Cable Drum Handling equipment to accommodate all sizes and types of Drums, for workshop and worksite operation.

## CABLE DRUM LEVER Model No. DL-150

- Lightweight and transportable
- Cable Drum Frame utilises a leverage of approximately 6:1 to aid with the lifting
- Lifts drums up to 1500mm OD x 1000mm wide
- Includes a 50mm Axle and two retaining collars
- Ideal for factory or workshop environment

Model No.	Description	Dimensions (mm)	Max Drum Diameter (mm)	Max Drum Width (mm)	WLL (kg)	Weight (kg)
DL-150	CABLE DRUM LEVER	1780 x 1260 x 830 (LxWxH)	1400	970	150	25



## ROPE STAND Model No. CRS-290

- Lightweight and transportable
- Folds flat for storage and transport
- Useable axle length 800mm
- Used in Industrial situation with powder coated finish
- Includes zinc plated axle 33mm OD

Model No.	Description	Dimensions (mm)	Drum Width (mm)		Weight (kg)
			Min	Max	
CRS-290	CABLE REEL STAND	1780 x 1260 x 830 (LxWxH)	SMALL BUILDERS CABLE DRUMS*		5.8

\*Maximum 700mm

Dimensions (mm)	900 x 531 x 400 (LxWxH)
Folded Dimensions (mm)	900 x 531 x 140 (LxWxH)



## ROPE CADDY Model No. CRC-600

- Lightweight and transportable
- Suitable for Workshop & Worksite applications
- Axle 90mm OD
- Complete with drum seated on grease able bearings, crank handle and two pneumatic wheels for mobility over rugged terrain
- Frame is powder coated, barrel zinc plated finish
- Manufactured with mandrel bent pipe work for maximum strength

Model No.	Description	Max Drum Width (mm)	Weight (kg)
CRC-600	CABLE DRUM CADDY	500	30
Dimensions (mm)		800 x 930 x 1090 (LxWxH)	
Capacity		2,100m of 6mm rope, 1,300m of 8mm rope, 550m of 12mm rope, 320m of 16mm rope	



CRC-600

## ROPE STAND Model No. RS-2419

- Axle 50mm OD
- Simple but very rigid stand to suit drums of rope or cabling. C/W washer and snap lock pin to retain drums.
- Black powder coated finish

Model No.	Description	Dimensions (mm)	Max Drum Width (mm)	Max Drum OD (mm)	Weight (kg)
RS-2419	ROPE STAND	590 x 500 x 366 (LxWxH)	480	600	11.8

RS-2419  
60Kg WLL



## HOSE - HIGH PRESSURE







**SPECIALISED FORCE OFFER A WIDE RANGE AND LENGTHS OF HIGH & LOW PRESSURE HYDRAULIC HOSE**

**Please contact your nearest Specialised Force Branch for further information**

Model No.	Brand	Type	Size-ID (mm)	OD (mm)	Working Pressure (Bar)	Minimum Burst (Bar)	Temp Range	Weight
<b>HPS-06R</b>	Durapac	RED	6.6	12.7	700	2,800	-40 to 100°C	180g/m
<b>HPS-06B</b>	Durapac	BLACK	6.6	12.7	700	2,800	-40 to 100°C	180g/m
<b>HPS-06T</b>	Durapac Twin	RED & BLACK	6.6	12.7	700	2,800	-40 to 100°C	180g/m
<b>Non Conductive "Tested To 75,000 Volts Per 300mm"</b>								
<b>2022N-03-B38NM-CCN*</b>	Parker 3m	ORANGE	6.0	15.0	700	2,800	-40 to 100°C	160g/m
<b>2022N-06-B38NM-CCN*</b>	Parker 6m	ORANGE	6.0	15.0	700	2,800	-40 to 100°C	160g/m
<b>B098</b>	NRP Twin	ORANGE	10.0	19.0	155	620	-40 to 93°C	600g/m

\* Fitted with CEJN couplings & dust caps (10-116-1429 & 10-115-6404)

## "PARKER" HIGH PRESSURE COUPLINGS - 700 BAR W.P.

Thread	Thread Type	Screw Type Coupler	
		Female	Male
3/8 NPT M in 3050-3 3/8 NPT F in 3010-3		<b>3050-3</b>	<b>3010-3</b>
DUST CAP TO SUIT SCREW TYPE COUPLERS			
		<b>3005-3</b>	<b>3009-3</b>
Thread	Thread Type	Flush-Face Coupler	
		Female	Male (Nipple)
3/8 NPT	FEMALE		
		<b>10-116-1429</b>	<b>10-115-6404</b>

Refer page 52 for additional couplings

## "CEJN" HIGH PRESSURE COUPLINGS



### A one-hand-to-connect, non-drip coupling with built-in safety function

The one-hand-to-connect Flat-Face couplings have been developed to reliably meet the rigorous demands of high pressure hydraulic applications. Engineered to exacting tolerances, using the most durable materials, CEJN high pressure couplings hold up where other couplings fail.

### FEATURES

#### One-hand-to-connect

The nipple is pushed into the coupling and is locked automatically. The locking sleeve does not need to be manually positioned.

#### Unique automatic safety function eliminates accidental disconnection

Turn the locking sleeve 30° and then pull backwards to release. The Flat-Face design ensures non-drip.

#### Maximum Working Pressure 800Bar



Thread	Thread Type	Flush-Face Coupler	
		Female Part Number	Male (Nipple) Part Number
1/4 BSPP	FEMALE PARALLEL	 10-116-1219	 10-115-6202
1/4 NPT	FEMALE	 10-116-1419	 10-115-6402
3/8 NPT	FEMALE	 10-116-1429	 10-115-6404
1/4 BSPP	MALE PARALLEL	 10-116-1269**	 10-115-6212**
3/8 BSPT	MALE TAPERED	 10-116-1279	 10-115-6154
3/8 NPT	MALE	 10-116-1479	 10-115-6454
1/4 NPT	MALE	 10-116-1469	 10-115-6452

Aluminium Dust Caps		
10-115-4101	10-115-4102	10-115-4100
SUITS ALL THE ABOVE NIPPLES	SUITS ALL THE ABOVE NIPPLES WITH PRESSURE ELIMINATOR	SUITS ALL THE ABOVE COUPLERS

\*\*NOTE: USE WITH 19-950-0083 RUBBER/METAL SEAL

## 2022N HIGH PRESSURE NON-CONDUCTIVE HOSE

2022N High Pressure Non-Conductive Hydraulic hose assemblies are used in many applications where non-conductivity of hoses is required, including live power line work and cable spiking. We can supply 2022N high pressure hydraulic hose assemblies in any length required. Hose assemblies are supplied with 3/8" NPT male ends and can be fitted with any style of couplings required. 2022N hose is supplied with an orange outer jacket cover for easy identification. Hydraulic pressure test certificates can be supplied at extra cost if required. Meets or exceeds SAE J517 for less than 50 micro-amps of leakage under 75,000 volts per 300mm.

Series	Jacket Colour	Min. ID (mm)	Max. OD (mm)	Max. Work Pressure (MPa)	Min. Burst Pressure (MPa)	Min. Bend Radius (mm)	Weight (kg/mm)
2022N	Orange	6.0	15.0	69.0	275.9	64	0.16

Refer Page 51 and Above for Couplings





**MODEL No. CP700EC & CP700EC(BB) HIGH  
PRESSURE REMOTE BATTERY PUMP  
(MADE IN GERMANY)**

*intercable*



CP700EC (Shown)

**Model No. CP700EC**

- 1 x Battery Pump with CEJN Female 115 Series Coupling & Dust Cap
- 1 x Remote Control (1.5m Long)
- 1 x **RA11** Lithium-Ion Milwaukee® Battery 4.0Ah
- 1 x 230VAC Charger
- 1 x Shoulder Strap
- 1 x Bag

**Model No. CP700EC(BB)**

- 1 x Battery Pump with CEJN Female 115 Series Coupling & Dust Cap
- 1 x Remote Control (1.5m L)
- 2 x RA11 Lithium-Ion Milwaukee® Batteries 4.0Ah
- 1 x 230VAC Charger
- 1 x Shoulder Strap
- 1 x Bag

**SPECIFICATIONS**

Tank Capacity (mL)	800
Usable Oil (mL)	750
Operating Pressure	700
Power (W)	200 Max
Battery Voltage	18.0VDC
Battery Capacity	4.0Ah
Battery Charge Time (min)	60
Battery Life (# of Charges)	1,000 (Approx)
Temperature Range	-20/+55°C Continuous Operation
Protection Rating	IP43
Measurements (mm)	205 x 290 x 190
Weight (kg)	5.2 with Battery

**ACCESSORIES & SPARES**

Model No.	Description
<b>NG3</b>	Adaptor to Operate Pump off Mains Power 230VAC (Accessory)
<b>FS02</b>	Switch, Foot Operated for <b>CP700-EC</b> (Accessory)
<b>SCH1.5</b>	Hose, Non-Conductive CEJN M&F Couplings & Dust Caps 1.5m Long (Accessory)
<b>HPS-0602BB-CCN</b>	2m Standard HP Hose with Male & Female Cejn Couplings (Accessory)
<b>RA11</b>	Battery, Lithium-Ion 18V 4.0Ah (Spare)
<b>LG8</b>	Charger, 230VAC for <b>RA11</b> (Spare)
<b>CP-F</b>	Control, Remote Corded for <b>CP700-EC</b> (Spare)
<b>CP-USB</b>	Cable, USB for <b>CP700-EC</b> (Spare)
<b>TTCP01</b>	Bag, Carry for <b>CP700-EC</b> units and accessories (Spare)
<b>TG3</b>	Strap, Shoulder for <b>CP700-EC</b> (Spare)

**DETAILS**

- Adjustable Retraction Mode to increase battery life
- Light, compact and robust structure
- Ergonomic design for right or left hand operation
- Remote control lead (1.5m)
- Possibility to carry the special transportation bag with additional (optional) pockets, by a shoulder strap or attached to a belt (optional)
- Possibility to attach the remote control unit to the apparatus, belt or shoulder strap with a clamp support, on buttons (Ø 18.7mm) or with a magnet on flat and rounded surfaces
- Fitted with Cejn 115 Series female high-flow snap coupler
- Anti-scratch and shock resistant display protection
- Rapid return of apparatus, thanks to high return capacity
- Electronic sensor pressure control
- High yield Lithium-Ion battery 4.0Ah
- Powerful (700Bar - LP=1.5L/min & HP=0.1L/min)
- Rapid return of connected tool or cylinder
- Automatic energy saving mode after 5 minutes



## BATTERY HYDRAULIC PUMP

### MODEL NO. BP114 & BP150

Battery powered 700 or 850 Bar battery hydraulic pump suitable for all single-acting high pressure tools including cutters, crimpers, punches, benders, pullers, presses, nut splitters etc.

**NOTE:** BP150 is also suitable for double-acting tools including hydraulic torque wrenches.

### FEATURES

#### INTERNALLY FITTED 6.3Ah LONG LIFE BATTERY

High capacity lithium-ion 67VDC - sufficient power for a full working day.

**EXTERNAL CHARGER** - 230 Volt - Plug In Type

**VARIABLE OUTPUT** - Pump output pressure set at 700 Bar but unit can be preset to suit customer requirements to a maximum of 850 Bar.

#### TWO REMOTE PENDANTS SUPPLIED WITH PUMP

Hard-Wired Plug-In Type & Bluetooth Remote Type.

**FAST CHARGE** - Battery will charge to 80% of full capacity during a lunch break.

**DURABLE DESIGN** - Rugged and heavy duty plastic housing with carry handle. Hydraulic coupling/control buttons/plug connectors well protected.

**BATTERY SAVER** - Energy saving mode switches the pump off 10 minutes after last cycle.

**PRESSURE INDICATOR** - Digital Gauge

### TECHNICAL FEATURES

#### BP114 - DUAL FUNCTION SWITCH (DUMP OR HOLD)

##### POSITION 1 - DUMP

When remote switch is pressed pump starts, cylinder advances and pump builds up line pressure to 700 Bar (or pre-set output), pressure switch turns pump off, cylinder automatically retracts. Pump can be stopped and cylinder retracts automatically at any time.

##### POSITION 2 - HOLD

When remote switch is pressed pump starts and cylinder advances, release remote switch and pump stops with pressure held. Cylinder can be retracted at any time by two quick presses of the remote button. Automatic pressure release after cut or punch is complete (in order to protect dies if punching and to save energy). Pressure switch activates at all times when 700 Bar is reached.

#### BP150 - MODES (The mode is switched by pressing the potentiometer)

- Mode 1: Single acting cylinders with end of stroke detection ON.
- Mode 2: Double acting cylinders with end of stroke detection ON.
- Mode 3: Torque wrench mode (automatic). Adjustment of maximum pressure through potentiometer D.
- Mode 4: Single acting cylinders with end of stroke detection OFF.
- Mode 5: Double acting cylinders with end of stroke detection OFF.

**DURAPAC**



**THE BP114 IS THE IDEAL  
PUMP FOR SAFETY  
CUTTING (CABLE SPIKING)  
OF LIVE CABLES TO PROVE  
DEAD DUE TO PUMP SPEED  
AND BLUETOOTH REMOTE**

**FASTEST BATTERY PUMP ON THE MARKET**

## BATTERY HYDRAULIC PUMP

### ORDERING INFORMATION

Model No.	BP114	BP150
Dimensions (mm)	250 H x 185 W x 250 L	
Weight (kg)	8.4	9.0
Oil Flow (L/min)	0.8 to 1.0	2.0
	Variable Flow vs Pressure	
Motor Peak Power (Watts)	1,400	4,000
Useable Oil (L)	1.2	

### SUPPLIED AS STANDARD WITH PUMP

- 230 VAC plug in charger (with leads)
- Remote hand pendant 2.5 metre, Bluetooth remote
- Operating instructions
- Fitted with CEJN (10-116-1219) flush face coupling with aluminium dust cap (10-115-4100) + 10-115-6272 nipple with 10-115-4101 dust cap

**DURAPAC**



TOOLS & EQUIPMENT FOR SWITCHBOARD MANUFACTURERS



**BLUETOOTH REMOTE**  
**MODEL NO. BP1141**  
**WEIGHT: 38 GRAMS**



**CHARGER**  
**MODEL NO. BP1143**  
**WEIGHT: 1.06KG**



**REMOTE HAND**  
**MODEL NO. BP1142**  
**WEIGHT: 200 GRAMS**

### OPTIONAL ACCESSORIES

- Carry bag Fatmax for pump, hose and small tool, **Model No. 1.93.952**
- Hydraulic hose 3m orange non-conductive, **Model No. 2022N-03-B38NM-CCN**
- Hydraulic hose 6m orange non-conductive, **Model No. 2022N-06-B38NM-CCN**
- Hydraulic hose 6m orange conductive, **HPS-0603BR-CCN**



**1.93.952**



**2022N-03-B38NM-CCN/  
2022N-06-B38NM-CCN**



**HPS-0603BR-CCN**



## HIGH PRESSURE PUMPS (MADE IN JAPAN)

**RIKEN**



Roll Frames available  
upon request

**SMP-40AR-67B**  
Pictured



Footswitch Sold  
Separately **SF1**

### SMP-30 & SMP-40

The Riken SMP-30 and SMP-40 electric hydraulic pumps have a magnet motor which greatly reduces noise compared with conventional motor types (Max 70dBa).

The "AR" models have an external adjustable pressure switch with automatic return function. They include a standard 3m remote hand pendant, operated through the low voltage step down transformer for added safety. The "dead-man" feature stops the pump when the switch is released on the remote hand pendant. Optional foot switch is also available Model No. **SF1**. Load holding is possible by fitting optional Model No. **SCH-13B** check valve with by-pass. Stainless steel roll cage to suit SMP series Model No. **PO3SMP3/4**.

### SPECIFICATIONS

Model No.	SMP-30AR-329C	SMP-40AR-67B
Included	3 Metres Hand Pendant Control	
Electric Magnet Motor 50Hz	230VAC	
Insulation Type	Class E Closed Type	
Voltage (V)	230	230
Rated Output (KW)	0.25	0.45
Max Current @ 5min (Amps)	3.5	5.2
Hydraulic Pump		
Max Working Pressure (Bar)		
1st Stage	15	15
2nd Stage	700	700
Output (L/min)		
1st Stage	2.0	3.0
2nd Stage	0.2	0.4
Reservoir Capacity (L) ^	2	2
Usable Oil (L)*	1.8	1.8
Weight	14.5	15.0

\*Supplied with oil

^Larger oil reservoirs available for SMP models (4L, 6L & 10L)

**DAIA**



**PERFECT  
FOR  
BENDING &  
PUNCHING**

Footswitch Sold  
Separately **SFVA-1-2**

### DSPN-12AS

The DSPN-12AS is a solenoid switched valve operated switched pump.

It features an advance pressure/hold/retract operation and has a hand pendant control operated through a 24VDC step down transformer. Unique "inching" function.

Fitted with 700 Bar Relief Valve.

### SPECIFICATIONS

Model No.	DSPN-12AS
Included	2 Metres Hand Pendant Control
Output Pressure/Flow	0-3.5Bar 2.0 L/min 3.5-700Bar 0.17L/min
Reservoir Capacity	1.2L
Weight (kg)	7.5kg
Dimensions (mm)	265L x 145W x 275H
Voltage	230VAC @ 50Hz
Accessories	Foot Switch <b>#SFVA-1-2</b>
Notes	Hose Sold Separately

These pumps are ideal for use with remote hydraulic single acting tools. Including cable cutters and crimpers, as well as punching, bending and cutting tools used in busbar fabrication and switchboard building.

**SPE SERIES ELECTRIC HYDRAULIC PUMPS  
(SINGLE ACTING, AUTOMATIC 2 SPEED)**

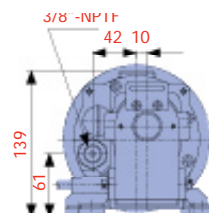
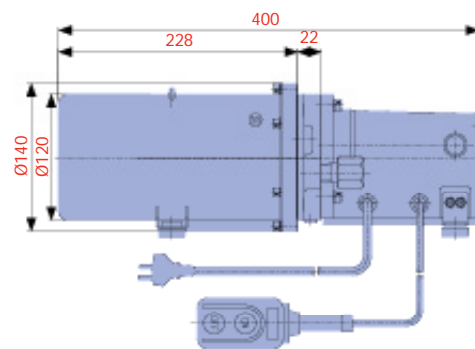
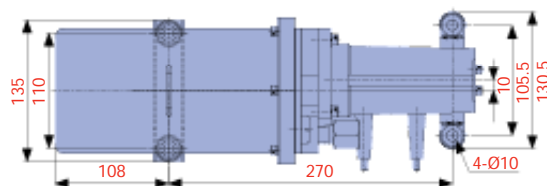
**DURAPAC**



These DURAPAC powerful electric, hydraulic pumps are lightweight, cost effective and have a number of valve and pump functionality options to ensure that there is a suitable pump for every application. Having low amperage draw motors they are ideal for field use or indoors. The steel oil reservoir has an internal bladder which allows the pump to be used at any angle. Other manual and solenoid options available upon request. Remote pendant operated through low voltage step down transformer for safety.

**SPECIFICATIONS**

Model No.	SPES3502AR	
Model Series	35 Series	
Valve Type	Internal "Pop-Off" Valve, Auto Retract Type	
Cylinder Pump Function	Advance when ON switch is pressed and the motor starts. Pop Off relief valve will indicate full pressure. Auto retract when ON switch is released	
Usable Oil (L/cc)	1.6 / 1600	
Pressure Stage	1st (10Bar)	2nd (700Bar)
Flow (Lpm)	2	0.2
Motor Type (230VAC 50)	Commutator	
Pressure Rating (bar)	700	
Motor kW @ 2,000 rpm	0.35	
Voltage (VAC)	230	
Amps	4.5	
Control Switch	Remote ON/OFF	
Remote Pendant Control Length (m)	2.5	
Size (mm) LxWxH	400 x 140 x 140	
Weight (kg)	8.4	



## IMPERIAL FRACTIONS TO METRIC MILLIMETERS

Fractions		mm	Fractions		mm	Fractions		mm
1/64	=	0.3968	23/64	=	9.1279	11/16	=	17.46210
1/32	=	0.7937	3/8	=	9.5248	45/64	=	17.85900
3/64	=	1.1906	25/64	=	9.9216	23/32	=	18.25590
1/16	=	1.5874	13/32	=	10.3185	47/64	=	18.65270
5/64	=	1.9843	27/64	=	10.7154	3/4	=	19.04960
3/32	=	2.3812	7/16	=	11.1122	49/64	=	19.44650
7/64	=	2.7780	29/64	=	11.5091	25/32	=	19.84330
1/8	=	3.1749	15/32	=	11.9060	51/64	=	20.24020
9/64	=	3.5718	31/64	=	12.3029	13/16	=	20.63710
5/32	=	3.9686	1/2	=	12.6997	53/64	=	21.03390
11/64	=	4.3655	33/64	=	13.0966	27/32	=	21.43080
3/16	=	4.7624	17/32	=	13.4934	55/64	=	21.82770
13/64	=	5.1592	35/64	=	13.8903	7/8	=	22.22450
7/32	=	5.5561	9/16	=	14.2872	57/64	=	22.62140
15/64	=	5.9530	37/64	=	14.6841	29/32	=	23.01830
1/4	=	6.3498	19/32	=	15.0809	59/64	=	23.41510
17/64	=	6.7467	39/64	=	15.4778	15/16	=	23.81200
9/32	=	7.1436	5/8	=	15.8747	61/64	=	24.2089
19/64	=	7.5404	41/64	=	16.27150	31/32	=	24.60570
5/16	=	7.9373	21/32	=	16.66840	63/64	=	25.00260
21/64	=	8.3342	43/64	=	17.06530	1	=	25.40000
11/32	=	8.7310		=			=	

## POWER CABLE DIMENSIONAL DATA

DIMENSIONAL DATA					DIE SIZE A/F (mm)		Cable Types											
Cross Sectional Area (mm2)	Stranding (No / Wire Diameter Ø mm)	OD of Conductor (mm)	Imperial Equivalent (No/Wire Diameter Ø)	AWG Size (American Wire Gauge)	Cu Die (A/F)	Al Die (A/F)	PVC	Insulated Sheathed	XLPE / PVC	Multiple Core Cables (0.6/1kV)				XLPE / URD		Name		
							*	*	*	**	**	***	****	****	Cores			
											✓	✓	✓		Earth			
1	1/1.13	1.1	1/0.44	18	-	-	3.0	4.0	-	10.0	-	-	-	Solid Conductor	Stranded Conductor	Approx OD of Cable		
	7/0.40	1.2																
1.5	1/1.3	1.4	3/0.29	16	-	-	3.5	4.5	-	11.5	8.5	7.5	10.5					
	7/0.50	1.5	1/0.64															
2.5	7/0.67	2.0	3/0.36	14	-	-	4.0	5.0	-	12.0	8.0	11.5	12.5					
		2.0	7/0.29															
4	7/0.85	2.6	7/0.36	12	-	-	4.5	6.0	-	13.5	11.5	15.5	19.0					
6	7/1.04	3.1	7/0.44	9	4.4	9.0	5.5	7.0	-	14.5	12.5	16.5	15.0					
10	7/1.35	4.1	7/0.52	7	5.7	9.0	6.0	8.0	-	17.0	17.0	18.5	20.0					
16	7/1.70	5.1	7/0.64	5	6.3	9.0	7.0	9.0	9.5	19.0	19.0	20.5	23.0					
			19/0.44															
25	19/1.35	6.8	19/0.52	3	7.7	9.0	8.5	11.0	10.5	23.0	22.0	24.0	26.5					
35	19/1.53	7.7	19/0.64	2	9.2	9.0	9.5	12.0	11.5	-	25.0	26.5	29.5					
50	19/1.7	8.9	19/0.72	1/0	10.4	13.2	11.0	14.0	13.0	-	28.0	31.0	35.0					
70	19/2.14	10.7	19/0.83	2/0	11.5	13.2	12.5	15.5	15.0	-	32.0	35.0	39.0					
95	37/1.7	12.5	37/0.72	3/0	14.2	17.3	15.5	18.0	17.5	-	-	40.0	45.0					
120	37/2.03	14.2	37/0.83	250MCM	16.5	17.3	17.5	20.5	20.0	-	-	43.5	50.0					
150	37/2.25	15.8	37/0.93	300MCM	18.3	22.0	19.0	24.5	21.5	-	-	48.5	55.0					
185	37/2.52	17.6	37/1.03	350MCM	20.0	22.0	21.5	26.5	23.5	-	-	54.0	61.0				43.0	47.5
240	61/2.25	20.3	61/0.93	500MCM	23.1	28.4	24.5	28.0	26.5	-	-	61.0	69.5				50.0	53.5
300	61/2.52	22.3	61/1.03	600MCM	26.0	28.4	27.0	31.0	29.5	-	-	68.0	77.0					
400	61/2.85	25.7	91/0.93	800MCM	28.1	39.0	31.0	35.0	33.5	-	-	-	-					
500	61/3.20	28.8	91/1.03	1000MCM	31.0	39.0	34.5	38.5	37.0	-	-	-	-					
			127/0.93															
630	127/2.52	32.8	127/1.03	1200MCM	37.0	43.2	38.0	42.5	41.5	-	-	-	-					
800	127/2.85	37.0	127/1.12	-	43.2	52.5	-	-	-	-	-	-	-					
1,000	127/3.7	41.6	127/1.25	-	48.0	52.5	-	-	-	-	-	-	-					