



*PERFECTION IN MODULAR LIVING.*



Tiny Houses · Modular Buildings · Off-Grid Solutions · Outdoor Systems

# MODULAR. SUSTAINABLE. INTELLIGENT LIVING.



**Dream Houses Perfection** stands for premium, design-driven tiny houses and modular building solutions, specifically developed for the German and Central European markets. Our turnkey concepts unite contemporary architecture with high energy efficiency and flexible usage options, delivering sustainable living and business solutions for residential, commercial, and tourism-focused projects.



Queen Dream  
Series Kitchen





# Index

DREAM HOUSES PERFECTION

01  
About Us

02  
Vision & Philosophie

03  
Dream Tiny Houses

04  
Dream Modular Houses

05  
Dreamono  
Monoblock Systems

06  
Light Steel  
Construction

07  
Complementary  
Products



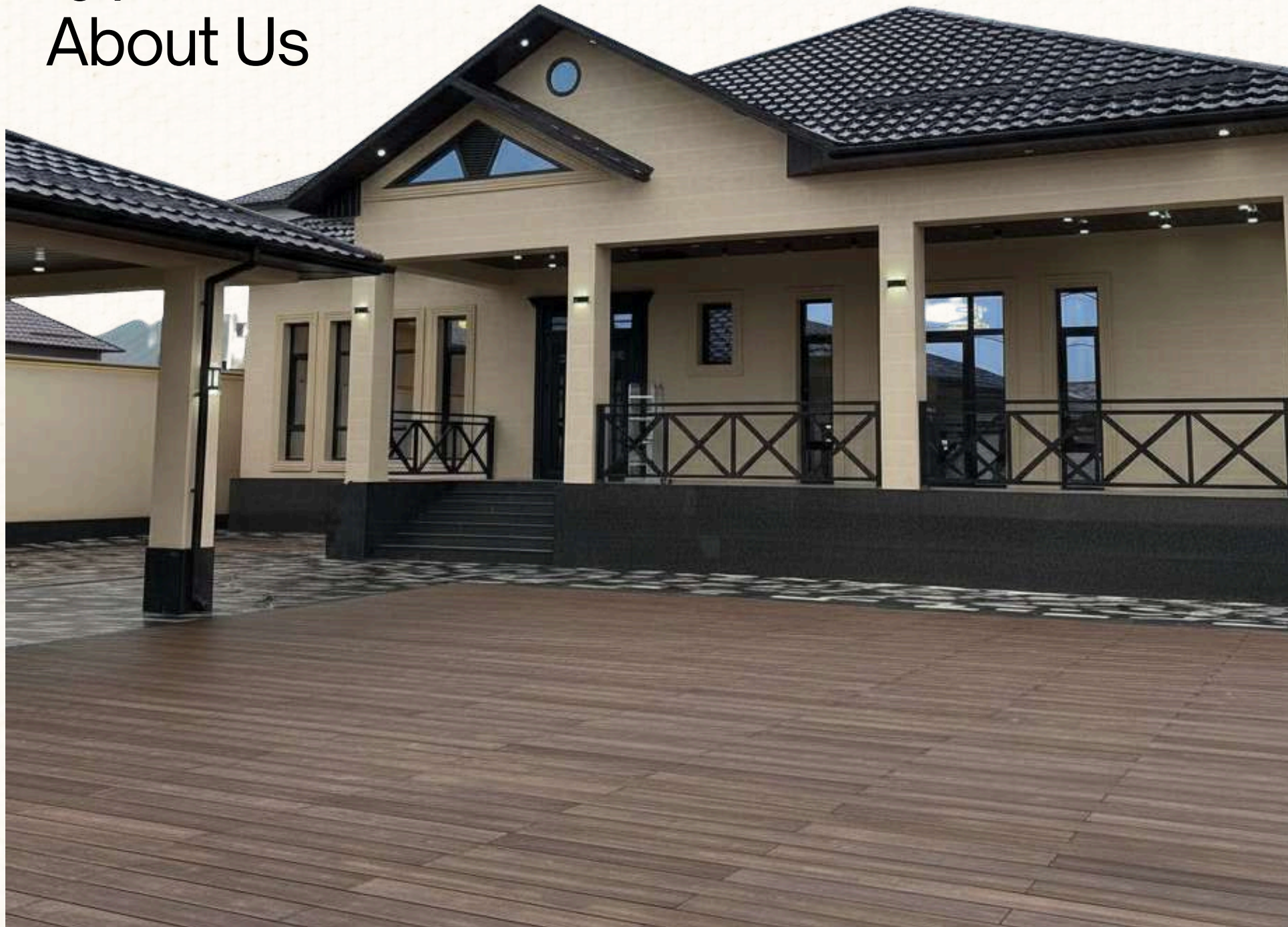
**LUXINIA**

DREAM HOUSES • BESPOKE SURFACES

**DreamTherm®**



## 01 About Us



# We Don't Build Houses. We Design Freedom.



Dream Tiny Houses develops premium tiny, modular, and off-grid living solutions for modern lifestyles, investors, and developers across Europe.

Our systems are engineered for:

- Long-term durability
- Energy efficiency
- Architectural flexibility
- Fast delivery and scalability
- 

Designed for today. Built for the future.

**Dream Sunny Premium**  
1800 (180 m<sup>2</sup>)

DREAM HOUSES PERFECTION

**DreamTherm**<sup>®</sup>

**NATURIX**  
Dream Houses

**LUXINIA**  
DREAM HOUSES • BESPOKE SURFACES



## Dream Houses Perfection – Where Design Meets Intelligent Living



- ***Dream Houses Perfection*** stands for premium modular architecture designed for the European market. Combining intelligent planning, energy-efficient construction, and contemporary design, we deliver turnkey living solutions for residential, commercial, and investment projects. Every detail is engineered for comfort, durability, and long-term value—setting new standards in modern modular living.

we develop and deliver standardized yet customizable modular housing systems for residential, hospitality, workforce, and investment-driven projects across Europe.

Dream Houses Perfection offers a complete modular ecosystem, allowing investors to source everything from one manufacturer and one logic.





# Approach



We design complete living environments

**Dream Sunny 1000**



## How We Work

We work in close partnership with our clients — as part of their development team — to fully understand their vision, business objectives, and market opportunities.

In doing so, we take into account market conditions, financial factors, political frameworks, and historical context in order to strategically guide and manage the project planning process.





**Dream Sunny 1000**



## 02 Vision & Philosophy

### Long-Term Perspectives

*We support our clients in transforming their property into a sustainable and value-enhancing investment through a Tiny House solution — flexible, efficient, and future-proof.*

### Holistic Planning Approach

*We combine architecture, interior architecture, and modular construction methods into a coherent overall concept — delivering unique, well-considered, and self-sufficient Tiny House solutions.*

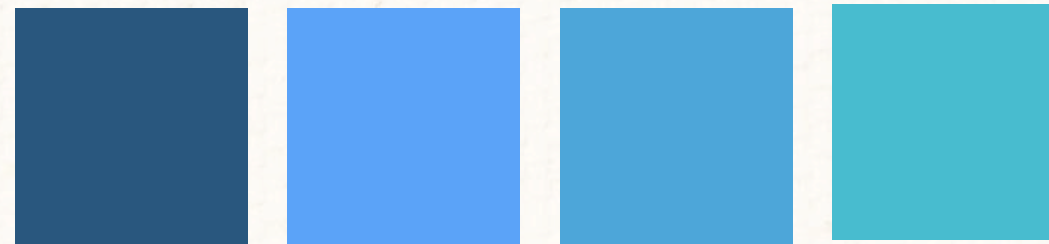




# Our Vision



**We create living spaces — globally inspired,  
locally delivered**



**Dream Sunny Premium  
1800 (180 m<sup>2</sup>)**

*At Dream Tiny Houses, we combine international design standards with German precision and sustainable construction methods.*

*Each project is unique and reflects our passion for mobile, flexible, and energy-efficient living solutions.*





02

## Our Philosophy



**DreaMono 2340**

### Environmentally Responsible Building for the Future

*At Dream Tiny Houses, we combine creative design with responsible use of resources.*

*As pioneers in sustainable modular and tiny house construction, we create living spaces that are ecologically responsible, efficient, and future-oriented.*

### Market Advantage Through Sustainability

*Our buildings unite aesthetics with functionality — while simultaneously delivering a real competitive advantage.*

*Through energy-efficient construction methods, mobile solutions, and innovative features, we design living environments with lasting value and long-term impact.*

Quality. Efficiency. Trust.

Our homes are manufactured in accordance with European quality standards and designed for use in

Germany. Specialfocus is placed on:

Energy efficiency in line with GEG requirements

Durable, low-maintenance materials

Flexible floor plan and equipment options

Short production and delivery times





## 03 Dream Tiny Houses

**Queen Dream 8334**

**Tiny Houses – Smart Living Solutions with a System - Tiny Houses from 21 m<sup>2</sup> to 39 m<sup>2</sup>**



Dream Houses Perfection offers innovative Tiny Houses designed for mobile and semi-permanent living, suitable for private use, holiday rentals, offices, or employee accommodation.

All Tiny Houses are delivered with international COC (Certificate of Conformity), enabling legal road transport and cross-border delivery.

Key Advantages

- Individually configurable: layout, size, and features tailored to your requirements
- International delivery: transport-ready units with COC certification
- Fast delivery: turnkey solutions directly from the factory within just a few weeks
- Efficient construction: optimized for compact living and low operating costs

Our Tiny Houses combine intelligent space planning with the flexibility of modern system-based construction.

Whether as a single unit or part of a larger Tiny House concept, Dream Houses Perfection creates compact spaces that inspire.

**DreamTherm®**

 **NATURIX**  
Dream Houses

**LUXINIA**  
DREAM HOUSES • BESPOKE SURFACES

DREAM HOUSES PERFECTION



# DREAM TINY HOUSES TECHNICAL SHEET



## DREAM TINY HOUSES

### Premium Tiny Living – Engineered in Germany Standards

Queen Dream 8334



Dream Tiny Houses represents high-end, mobile tiny house solutions designed for modern living, tourism, and investment use.



#### STRUCTURE & FACADE

Robust Steel Construction & Premium Exterior

- Structural frame: Welded steel construction with double epoxy primer and polyurethane top coating
- Facade: Corrugated aluminum panels combined with heat-treated thermowood
- Thermal bridge protection: Rubber insulation bands and plywood separation layers

Built for durability, mobility, and long-term use in diverse European climates.

👉 Discover all Tiny House models





# DREAM TINY HOUSES TECHNICAL SHEET



## DREAM TINY HOUSES

### Premium Tiny Living – Engineered in Germany Standards

Queen Dream 8334



#### ROOF SYSTEM

Weather-Resistant & Energy-Efficient

- Standing seam aluminum roof with electrostatic powder coating
  - Vapor-equalizing waterproof membrane (TYVEK IZOTEQ)
  - High-quality sealing tapes for long-term protection
- Optimized for rain, snow, wind, and year-round use.

#### THERMAL INSULATION

Comfort in Every Season

- Walls & ceiling: 100 mm fire-resistant mineral wool (A1 – Knauf)
  - Floor: XPS insulation boards
  - Vapor barrier: TYVEK IZOTEQ with sealed joints
- Ensures excellent thermal performance, fire safety, and acoustic comfort.





# DREAM TINY HOUSES TECHNICAL SHEET



## DREAM TINY HOUSES

### Premium Tiny Living – Engineered in Germany Standards



#### WALL BUILD-UP (FROM OUTSIDE TO INSIDE)

1. Corrugated aluminum exterior panel, electrostatic oven powder-coated
2. (Brand: JOTUN)
3. Aluminum connection and edge profiles for exterior cladding
4. Breathable, vapor-equalizing and waterproof membrane (130 g/m<sup>2</sup>)
5. (Brands: DuPont Tyvek, DELTA, WABIS)
6. Marine-grade plywood, water-resistant
7. Thermal insulation:
  - 100 mm mineral stone wool
  - Low thermal conductivity  $\lambda = 0.037 \text{ W/m}\cdot\text{K}$
  - Fire resistance class A1 (non-combustible)
  - (Brand: KNAUF)
8. Steel wall frame construction, epoxy primer + polyurethane coating
9. Timber sub-frame for interior cladding installation
10. Vapor control layer with aluminum foil (90 g/m<sup>2</sup>)
11. (Brands: VERSO REFLEX, DELTA)
12. Interior marine plywood wall cladding
13. Water-based, UV-resistant interior paint
14. (Brands: POLISAN, JOTUN)





# DREAM TINY HOUSES TECHNICAL SHEET



## DREAM TINY HOUSES

Premium Tiny Living – Engineered in Germany Standards

Queen Dream Big T



### ROOF SYSTEM

Weather-Resistant & Energy-Efficient

- Standing seam aluminum roof with electrostatic powder coating
- Vapor-equalizing waterproof membrane (TYVEK IZOTEQ)
- High-quality sealing tapes for long-term protection

Optimized for rain, snow, wind, and year-round use.

Comfort in Every Season

- Walls & ceiling: 100 mm fire-resistant mineral wool (A1 – Knauf)
- Floor: XPS insulation boards
- Vapor barrier: TYVEK IZOTEQ with sealed joints

Ensures excellent thermal performance, fire safety, and acoustic comfort.





# DREAM TINY HOUSES TECHNICAL SHEET



**DREAM TINY HOUSES**

**Premium Tiny Living – Engineered in Germany Standards**



## CHASSIS & MOBILITY

Road-Ready – EU Approved

- Steel trailer chassis with industrial coating
- 2 braked torsion axles (3,500 kg – AL-KO / KNOTT / SCHLEGL)
- Braked coupling, high-performance tires, stabilizing supports
- International O2 road approval with COC certificate

Perfect for mobile living, tourism projects, and flexible installation.





# DREAM TINY HOUSES TECHNICAL SHEET



## DREAM TINY HOUSES

### Premium Tiny Living – Engineered in Germany Standards



#### KITCHEN & BATHROOM

##### Fully Equipped – Turnkey Living

- Modern kitchen with high-gloss cabinets
- Space for dishwasher (45 cm), refrigerator, oven
- Integrated induction cooktop, electric oven, extractor hood

##### Bathroom includes:

- 90×90 cm shower with glass enclosure
- WC, washbasin with cabinet, mirror unit
- Washing machine connection

##### Fully Equipped as Standard

All Dream Houses Perfection and Dream Tiny Houses models are delivered with a fully equipped kitchen and bathroom as standard, designed for comfort, functionality, and everyday use.

The kitchen layout is optimized for efficient workflows and maximum storage within a compact footprint.



#### ✓ TURNKEY STANDARD

Kitchen and bathroom installations are delivered connection-ready and fully prepared, ensuring a true turnkey living experience without additional installation work.



# DREAM TINY HOUSES TECHNICAL SHEET



**DREAM TINY HOUSES**

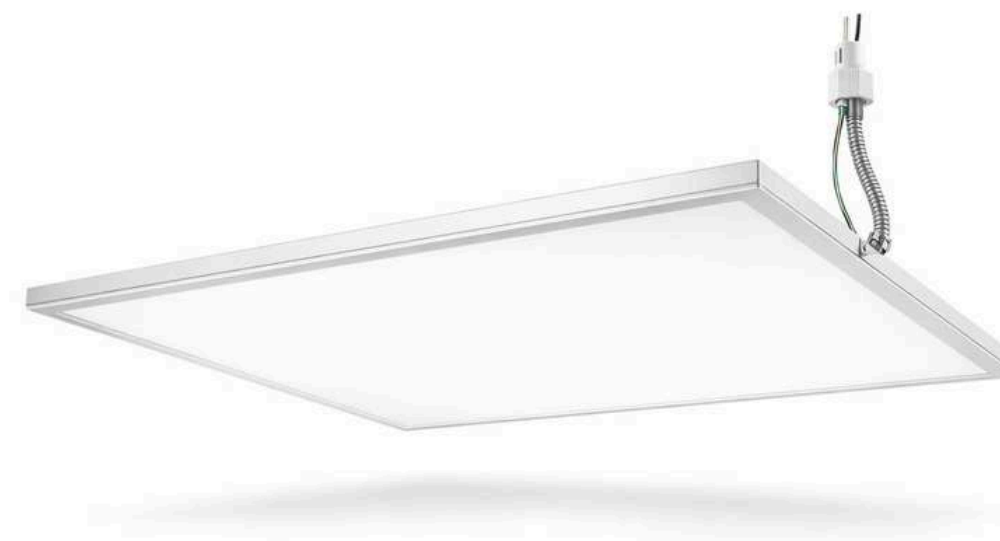
**Premium Tiny Living – Engineered in Germany Standards**



## ⚡ ELECTRICAL & SANITARY SYSTEMS

Fully EU-Compliant – Turnkey Ready

- Electrical system: halogen-free wiring (EN 50525), RCD protection EN 61008
- Plumbing: PPRC / PVC according to EN ISO 15874
- Sanitary equipment: WC, washbasin, shower – EN 997
- Central electrical distribution and safety protection included
- 220 V electrical system with RCD safety panel
- Halogen-free, flame-retardant wiring
- LED spotlights, stair LEDs, ambient LED strips (remote controlled)
- TV satellite connections & WLAN infrastructure





# DREAM TINY HOUSES TECHNICAL SHEET

## DREAM TINY HOUSES

### Premium Tiny Living – Engineered in Germany Standards



#### HEATING & OPTIONS

Comfort Tailored to Your Needs

- Optional WiFi-controlled underfloor heating
- Electric boiler or instant water heater
- LPG gas system for cooking & heating

Available options:

- Air conditioning
- Pellet stove / fireplace
- Solar energy systems
- Webasto heating
- Blinds & insect screens
- Panoramic roof window & sliding aluminum doors

#### APPLICATION AREAS

- Permanent tiny living
- Glamping & holiday parks
- Boutique hotels & resorts
- Office & guest houses
- Investment & rental projects

 Explore Tiny Living Concepts



#### THERMAL, FIRE & ACOUSTIC PERFORMANCE

Excellent thermal insulation for year-round comfort

Fire safety: non-combustible insulation (Class A1)

High sound insulation due to multi-layer wall composition

Moisture-resistant and vapor-controlled construction

Designed for Central & Northern European climates





# DREAM TINY HOUSES TECHNICAL SHEET



## DREAM TINY HOUSES

### Premium Tiny Living – Engineered in Germany Standards



#### INTERIOR & EXTERIOR FINISHES

Premium Materials by Naturix & Luxinia

The interior and exterior finishes are individually selected and composed of Naturix exterior cladding for the façade and veranda, combined with Luxinia interior flooring and surface finishes. This material concept ensures a harmonious balance of durability, elegance, and long-lasting quality, creating a refined living atmosphere both indoors and outdoors.

This carefully coordinated material concept ensures a seamless transition between indoor and outdoor spaces while meeting the highest standards of comfort, aesthetics, and durability.

Exterior: Naturix façade & veranda systems

Interior: Luxinia flooring and interior surface finishes

 Premium materials for timeless living



**LUXINIA**

DREAM HOUSES • BESPOKE SURFACES



# Tiny Houses with COC Certificate

High-Demand Rental & Holiday Units - From 21 m2 up to 39 m2

## Queen Dream Series



Flexible, customer-oriented planning options





# Tiny Houses with COC Certificate

High-Demand Rental & Holiday Units - From 21 m2 up to 39 m2

## Queen Dream Series



[See all Dream Tiny Houses Models](#)



## 04 Dream Modular Buildings

### Modular Buildings – Flexible Living Solutions with a System Modular houses from 21 m<sup>2</sup> to 200 m<sup>2</sup>

**Dream Sunny 6000**



Dream Houses Perfection offers innovative modular buildings that can be used as permanent residences, holiday homes, offices, or employee accommodation.

#### Key Advantages

- Individually configurable: size, floor plan, and features tailored to your requirements
- Fast delivery: turnkey solutions directly from the factory within just a few weeks
- GEG-compliant & eligible for funding: ideal for energy-efficient construction (EH55 / EH40)

Our modular houses combine the strengths of traditional architecture with the flexibility of modern system-based construction.

Whether as a single unit or a multi-unit ensemble, we create spaces that inspire.



# DREAM SUNNY 990 (99 m<sup>2</sup>) SMART MODULAR HOME



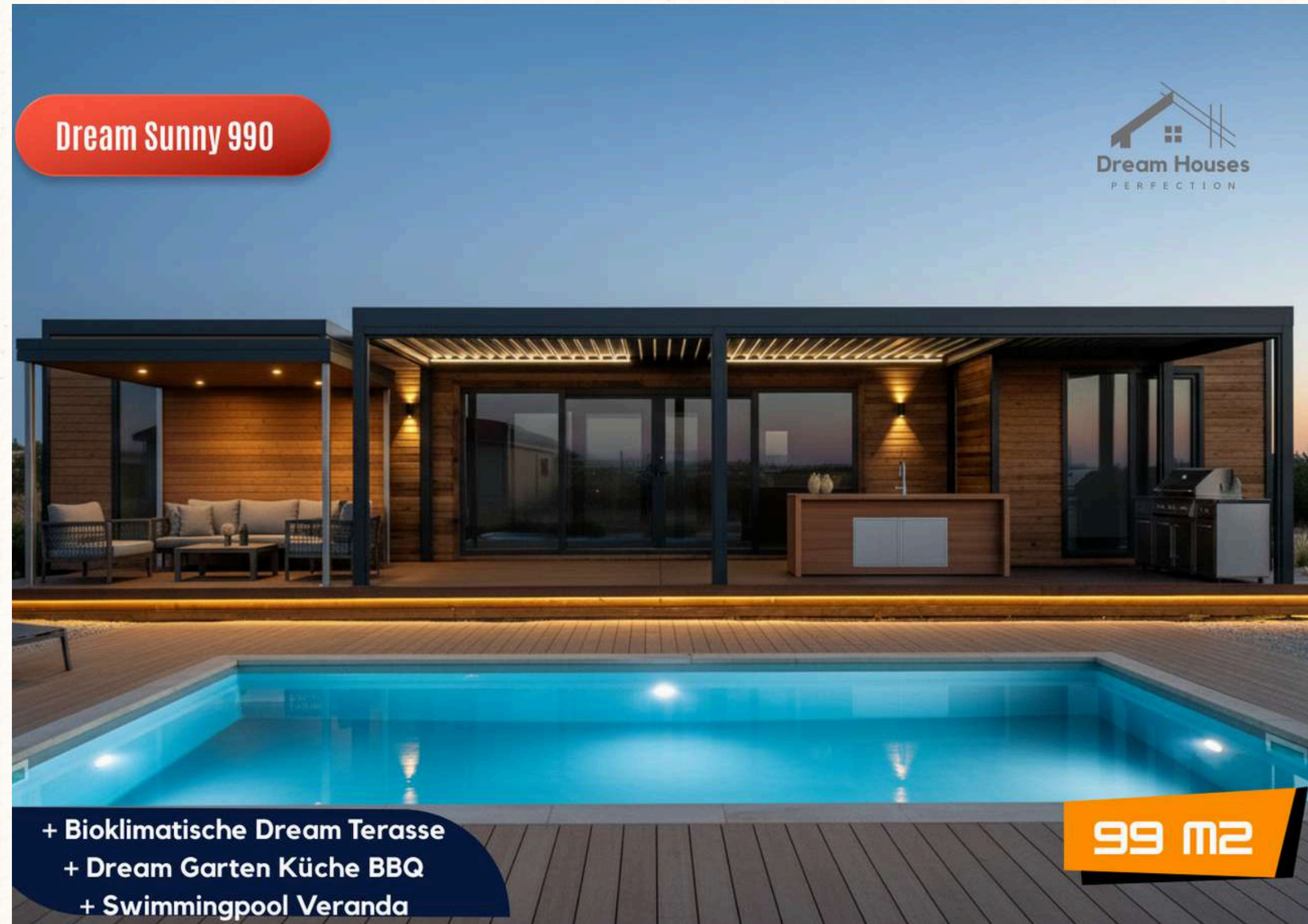
## The Masterpiece of the Dream Sunny Series

With **99 m<sup>2</sup>** of intelligently planned living space, advanced Smart Home technology, and multiple layout options.

Dream Sunny 990 is available in multiple configurations to suit different lifestyles and family needs:

- **2+1** – Spacious living with optimized functionality
- **3+1** – Ideal family home with balanced room distribution
- **4+1** – Maximum comfort for larger families or premium living

Each layout is designed with customer-centric planning, ensuring efficient space usage, natural light, and high living comfort.





# DREAM SUNNY SERIES TECHNICAL SHEET

**Energy-Efficient Modular Home According to EU Standards**

**Standard Construction Quality for All Dream Houses Perfection Modular Homes**

## **STRUCTURE & CONSTRUCTION** EU-Compliant Light Steel Construction

The load-bearing structure is based on galvanized light steel (S350GD+Z) and complies with the following EU standards:

- Eurocode 3 (EN 1993) – Design of steel structures
- Eurocode 1 (EN 1991-1-3 / 1-4) – Snow and wind loads
- Eurocode 8 (EN 1998) – Earthquake resistance
- EN 10346 – Galvanized steel S350GD+Z
- GEG / EPBD – EU energy efficiency regulations

All construction, insulation, energy, and quality standards described above are standard features across all Dream Houses Perfection modular homes.





# DREAM SUNNY SERIES TECHNICAL SHEET

**Energy-Efficient Modular Home According to EU Standards**

**Standard Construction Quality for All Dream Houses Perfection Modular Homes**

## WALL & INSULATION

Thermal Protection According to GEG

- External wall thickness: 140 mm
- Insulation: 100 mm stone wool (A1 – EN 13162)
- U-value: approx. 0.21 W/m<sup>2</sup>K
- Internal walls: 90 mm with 80 mm stone wool
- Finishes: Thermowood · Aluminum composite · Gypsum board EN 520

The wall system meets current requirements for energy efficiency, acoustic insulation, and fire protection in accordance with GEG and Eurocode standards.





# DREAM SUNNY SERIES TECHNICAL SHEET

**Energy-Efficient Modular Home According to EU Standards**

**Standard Construction Quality for All Dream Houses Perfection Modular Homes**

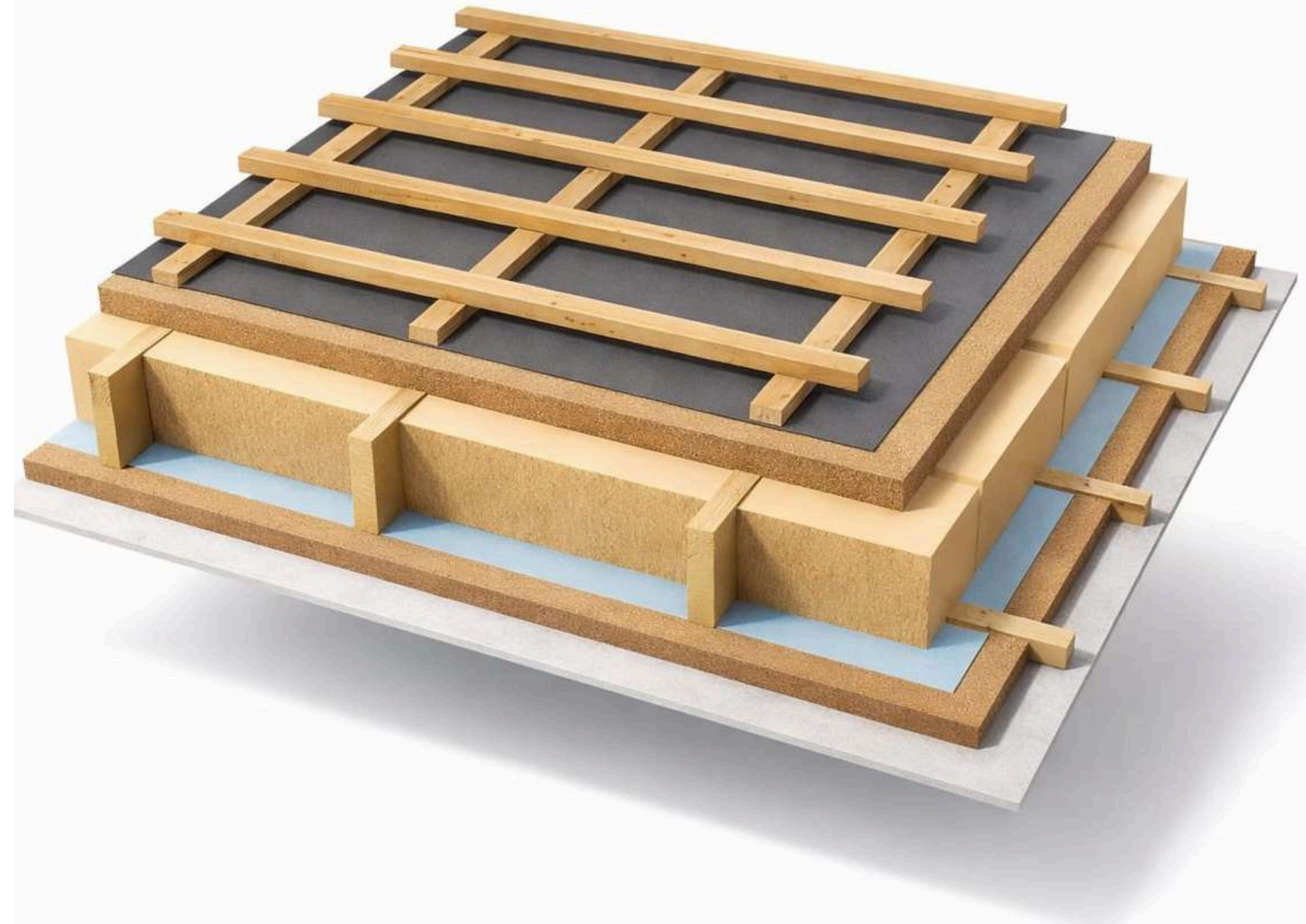
## ROOF & CEILING

High-Quality Design for Year-Round Use

- Roof build-up: 12 mm OSB · vapor barrier · 0.5 mm galvanized steel sheet
- Roof insulation: 80 mm mineral wool
- U-value: approx. 0.20 W/m<sup>2</sup>K
- Fire protection: EN 13501-1 – Class A1

Designed for permanent, year-round living in Central and Northern Europe.

All construction, insulation, energy, and quality standards described above are standard features across all Dream Houses Perfection modular homes.





# DREAM SUNNY SERIES TECHNICAL SHEET

**Energy-Efficient Modular Home According to EU Standards**

**Standard Construction Quality for All Dream Houses Perfection Modular Homes**

## WINDOWS & DOORS

Natural Light & Thermal Efficiency

- Windows: Aluminium, double glazing 4+12+4 mm – EN 14351-1
- Uw-value:  $\leq 1.3 \text{ W/m}^2\text{K}$
- Doors: Aluminum / steel (external), laminate (internal)
- Options: Safety glass EN 12600, solar control glass

All construction, insulation, energy, and quality standards described above are standard features across all Dream Houses Perfection modular homes.





# DREAM SUNNY SERIES TECHNICAL SHEET

**Energy-Efficient Modular Home According to EU Standards**

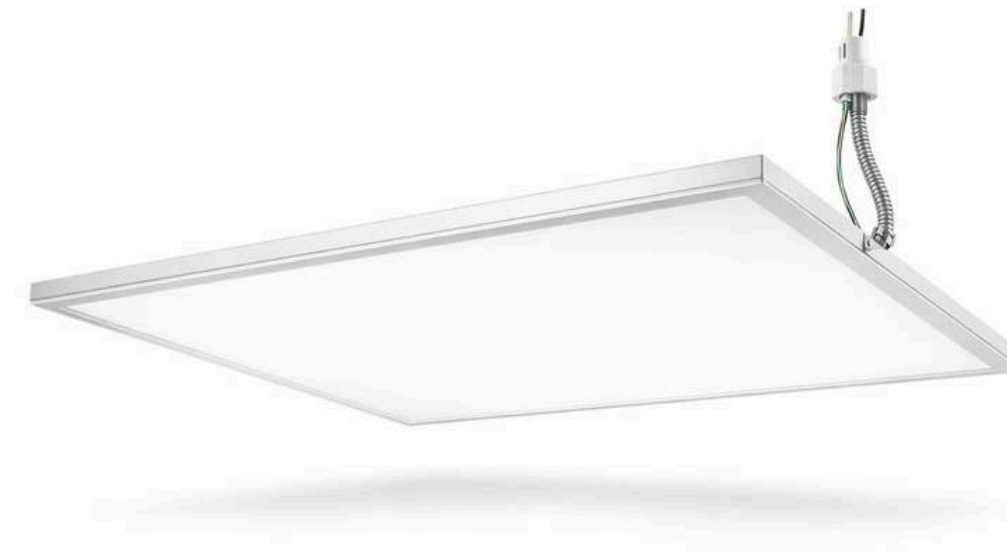
**Standard Construction Quality for All Dream Houses Perfection Modular Homes**

## ⚡ ELECTRICAL & SANITARY SYSTEMS

Fully EU-Compliant – Turnkey Ready

- Electrical system: halogen-free wiring (EN 50525), RCD protection EN 61008
- Plumbing: PPRC / PVC according to EN ISO 15874
- Sanitary equipment: WC, washbasin, shower – EN 997
- Central electrical distribution and safety protection included

All construction, insulation, energy, and quality standards described above are standard features across all Dream Houses Perfection modular homes.





# DREAM SUNNY SERIES TECHNICAL SHEET

## Energy-Efficient Modular Home According to EU Standards

Standard Construction Quality for All Dream Houses Perfection Modular Homes



### KITCHEN & BATHROOM

Fully Equipped – Turnkey Living

- Modern kitchen with high-gloss cabinets
- Space for dishwasher (45 cm), refrigerator, oven
- Integrated induction cooktop, electric oven, extractor hood

Bathroom includes:

- 90×90 cm shower with glass enclosure
- WC, washbasin with cabinet, mirror unit
- Washing machine connection

Fully Equipped as Standard

All Dream Houses Perfection and Dream Tiny Houses models are delivered with a fully equipped kitchen and bathroom as standard, designed for comfort, functionality, and everyday use.

The kitchen layout is optimized for efficient workflows and maximum storage within a compact footprint.



#### ✓ TURNKEY STANDARD

Kitchen and bathroom installations are delivered connection-ready and fully prepared, ensuring a true turnkey living experience without additional installation work.



# DREAM SUNNY SERIES TECHNICAL SHEET

Energy-Efficient Modular Home According to EU Standards

Standard Construction Quality for All Dream Houses Perfection Modular Homes

## HEATING & ENERGY EFFICIENCY

Smart. Efficient. Future-Ready.

- WiFi-controlled underfloor heating, individually adjustable per room
- Thermal insulation according to EN 13162
- Airtightness according to EN 12114
- Windows according to EN 14351-1
- U-values < 0.25 W/m<sup>2</sup>K

👉 Optional: Implementation according to GEG EH40 / EH55 / EH75 standards (Germany)

All construction, insulation, energy, and quality standards described above are standard features across all Dream Houses Perfection modular homes.



**DreamTherm**<sup>®</sup>



# DREAM SUNNY SERIES TECHNICAL SHEET

**Energy-Efficient Modular Home According to EU Standards**

**Standard Construction Quality for All Dream Houses Perfection Modular Homes**

## 🧱 INTERIOR & EXTERIOR FINISHES

Premium Materials by Naturix & Luxinia

The interior and exterior finishes are individually selected and composed of Naturix exterior cladding for the façade and veranda, combined with Luxinia interior flooring and surface finishes. This material concept ensures a harmonious balance of durability, elegance, and long-lasting quality, creating a refined living atmosphere both indoors and outdoors.

This carefully coordinated material concept ensures a seamless transition between indoor and outdoor spaces while meeting the highest standards of comfort, aesthetics, and durability.

Exterior: Naturix façade & veranda systems

Interior: Luxinia flooring and interior surface finishes

👉 Premium materials for timeless living





# MODULAR BUILDINGS FOR BUSINESS & COMMERCIAL USE

Scalable Multi-Unit Architecture - From 21 m2 up to 200 m2

**Dream Sunny Series**



Perfectly suited for:  
Holiday rentals & resorts  
Office and practice spaces  
Employee accommodation  
Tiny living & investment projects



# MODULAR BUILDINGS FOR BUSINESS & COMMERCIAL USE

Scalable Multi-Unit Architecture - From 21 m<sup>2</sup> up to 200 m<sup>2</sup>



Customer-Oriented Planning

**Dream Sunny Series**





# MODULAR BUILDINGS FOR BUSINESS & COMMERCIAL USE

Scalable Multi-Unit Architecture - From 21 m2 up to 200 m2

**Dream Modular Systems**



[See all Dream Modular Models](#)

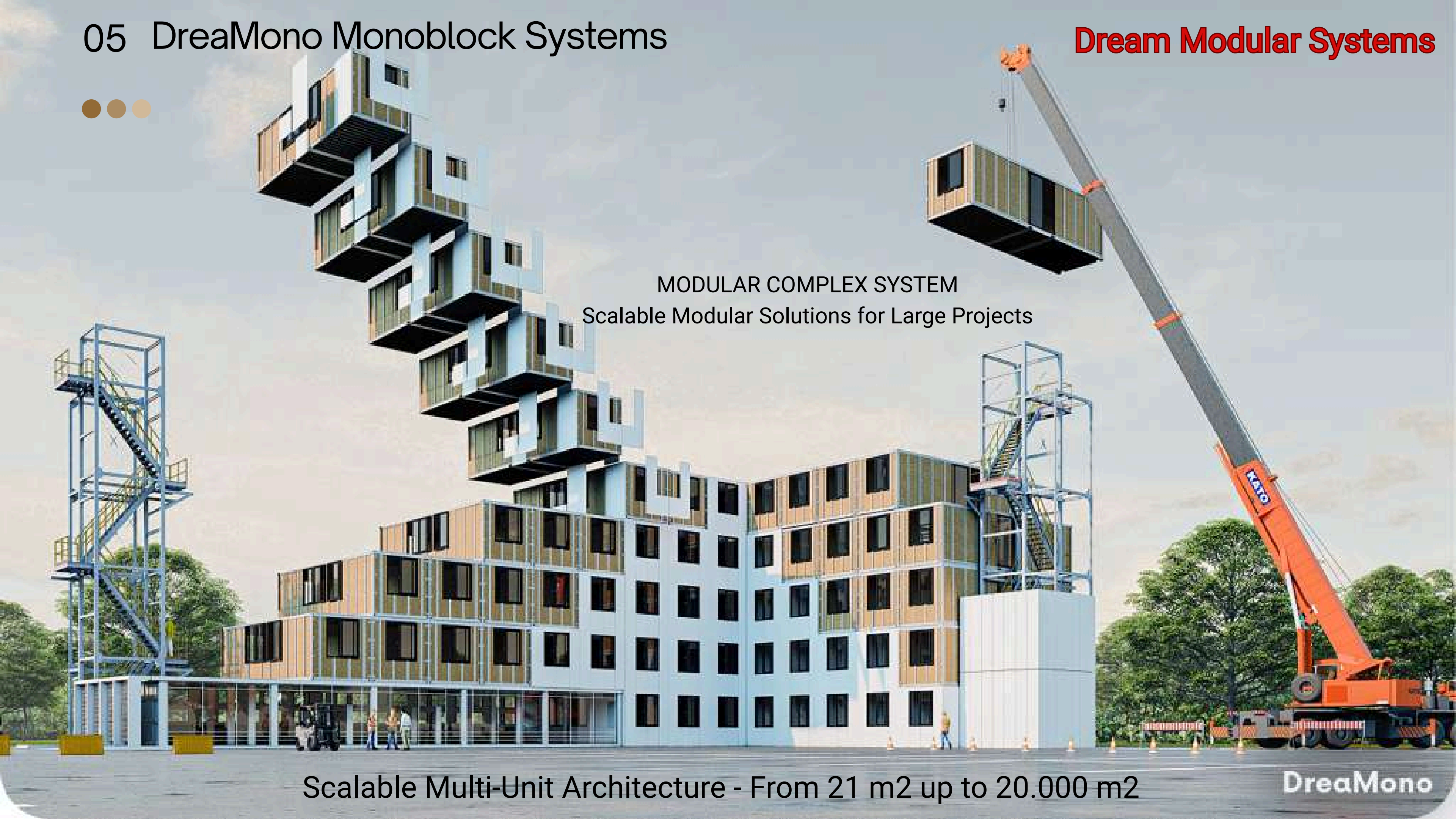


# 05 DreaMono Monoblock Systems

**Dream Modular Systems**



MODULAR COMPLEX SYSTEM  
Scalable Modular Solutions for Large Projects



Scalable Multi-Unit Architecture - From 21 m<sup>2</sup> up to 20.000 m<sup>2</sup>

**DreaMono**



# DREAMONO SERIES TECHNICAL SHEET

## MODULAR COMPLEX SYSTEM

### Scalable Modular Solutions for Large Projects



DreaMono Modular Complex is a highly scalable, prefabricated building system designed for large residential developments, worker accommodation, commercial complexes, and institutional projects.

The system combines speed, efficiency, and architectural flexibility, delivering turnkey modular buildings tailored to project-specific requirements.

👉 Explore modular complex solutions

#### 🔧 MODULAR COMPLEX CONCEPT

Flexible. Expandable. Future-Ready.

DreaMono Modular Complexes are composed of individually prefabricated modules that can be combined into single-storey or multi-storey building structures.

- Linear, courtyard, or cluster layouts
- Multi-unit residential blocks
- Mixed-use combinations (living, office, sanitary modules)
- Easy expansion and reconfiguration

Each complex is designed with customer-centric planning, allowing full adaptation to site conditions, capacity needs, and functional requirements.





# DREAMONO SERIES TECHNICAL SHEET

## MODULAR COMPLEX SYSTEM

### Scalable Modular Solutions for Large Projects




#### WALL, ROOF & INSULATION Energy-Efficient Building Envelope

- High-performance thermal insulation systems
- Mineral wool insulation (fire class A1)
- Vapor barriers and breathable membranes
- Optimized U-values compliant with GEG & EPBD

 Optional execution: GEG EH40 / EH55 / EH75 standards (Germany)

#### HEATING & ENERGY SYSTEMS Smart, Efficient, Sustainable

- WiFi-controlled underfloor heating (room-by-room control)
- Energy-efficient heating and ventilation systems
- Preparation for photovoltaic and renewable energy systems
- Low operating and maintenance costs
-  KITCHEN & SANITARY MODULES
- Fully Equipped – Standard or Custom

#### KITCHEN & SANITARY MODULES Fully Equipped – Standard or Custom

Standard kitchen modules include:

- Electric induction cooktop (4-zone ceramic surface)
- Integrated extractor hood
- Ample storage cabinets
- Dishwasher space included
- All electrical and water connections ready

Sanitary modules include:

- Shower, WC, washbasin
- Fully installed plumbing and drainage
- Ready for immediate use

#### ELECTRICAL & TECHNICAL SYSTEMS Turnkey & EU-Compliant

- Central electrical distribution with safety protection
- Halogen-free wiring and RCD systems
- LED lighting solutions
- Internet, WLAN, and multimedia infrastructure





# 05 DreaMono Monoblock Systems

Scalable Multi-Unit Architecture - From 21 m2 up to 20.000 m2



## 🏠 APPLICATION AREAS

DreaMono Modular Complex is ideal for:  
Large construction site accommodations  
Worker dormitories and staff housing  
Residential apartment complexes  
Student housing  
Hotels, hostels, and serviced apartments  
Offices and administrative buildings  
Public and institutional projects



## MODULAR COMPLEX SYSTEM

Scalable Modular Solutions for Large Projects



**Fast. Robust. Scalable.**

## Dream Modular Systems





# MODULAR BUILDINGS FOR BUSINESS & COMMERCIAL USE

Scalable Multi-Unit Architecture - From 21 m2 up to 20.000 m2

**Dream Modular Systems**



## KEY ADVANTAGES

- Fast production and installation
- Scalable and modular growth
- Predictable costs and timelines
- High energy efficiency
- Reusable and relocatable modules
- Long-term investment value



**Fast Delivery within EU**

## ★ STANDARD QUALITY ACROSS ALL COMPLEXES

All construction, insulation, energy, and technical standards described above represent the default quality level for every DreaMono Modular Complex, developed under the Dream Houses Perfection engineering and quality philosophy.



# MODULAR BUILDINGS FOR BUSINESS & COMMERCIAL USE

Scalable Multi-Unit Architecture - From 21 m<sup>2</sup> up to 20.000 m<sup>2</sup>



## KEY ADVANTAGES

- Fast production and installation
- Scalable and modular growth
- Predictable costs and timelines
- High energy efficiency
- Reusable and relocatable modules
- Long-term investment value



**Fast Delivery within EU**

## Dream Modular Systems



★ **STANDARD QUALITY ACROSS ALL COMPLEXES**  
All construction, insulation, energy, and technical standards described above represent the default quality level for every DreaMono Modular Complex, developed under the Dream Houses Perfection engineering and quality philosophy.



## 06 Light Steel Construction

✓ *Precise. Strong. Efficient.*

*Leichtstahlkonstruktion (Light Steel Construction) is a modern building system based on cold-formed galvanized steel profiles, offering high structural precision, durability, and speed. It is an ideal solution for residential buildings, large-scale housing projects, commercial units, and industrial applications.*



**Dream A 5500**



### APPLICATION AREAS

Light Steel Construction systems are perfectly suited for:

- Residential houses and modular homes
- Multi-unit housing projects
- Worker accommodation and dormitories
- Offices and commercial buildings
- Hotels, hostels, and serviced apartments
- Industrial and logistics buildings
- Public and infrastructure projects



# 06 Light Steel Construction

✓ *Precise. Strong. Efficient.*

## LIGHT STEEL CONSTRUCTION

Precision Engineering for Modern Modular Architecture

Light Steel Construction is a modern building system based on cold-formed, galvanized steel profiles, offering exceptional precision, strength, and durability.

At Dream Houses Perfection, this system forms the structural backbone of our modular homes and complexes, ensuring long-term performance and full compliance with European standards.

### STRUCTURAL CONCEPT

Engineered for Accuracy & Stability

- Cold-formed galvanized steel profiles (S350GD+Z)
- Factory-controlled, computer-assisted production
- High dimensional accuracy and consistent quality
- Dry construction system with minimal on-site work

This construction method guarantees structural reliability, fast assembly, and reduced tolerance deviations.

### DESIGN FLEXIBILITY

Flexible floor plan layouts

Easy integration with modular systems

Suitable for single-storey and multi-storey buildings

Ideal for residential, commercial, and industrial projects

Customer-centric planning allows full adaptation to project-specific requirements.

### PERFORMANCE ADVANTAGES

- High Structural Strength
- Excellent load-bearing capacity
- Earthquake-resistant design (Eurocode compliant)
- Long service life with corrosion protection
- Speed & Efficiency
- Short production and installation times
- Reduced on-site labor and construction risks
- Predictable timelines and costs
- Energy Efficiency
- Optimized wall, roof, and floor assemblies
- High-performance thermal insulation
- Designed to meet GEG / EPBD requirements
- Optional execution: GEG EH40 / EH55 / EH75 (Germany)

### SAFETY & SUSTAINABILITY

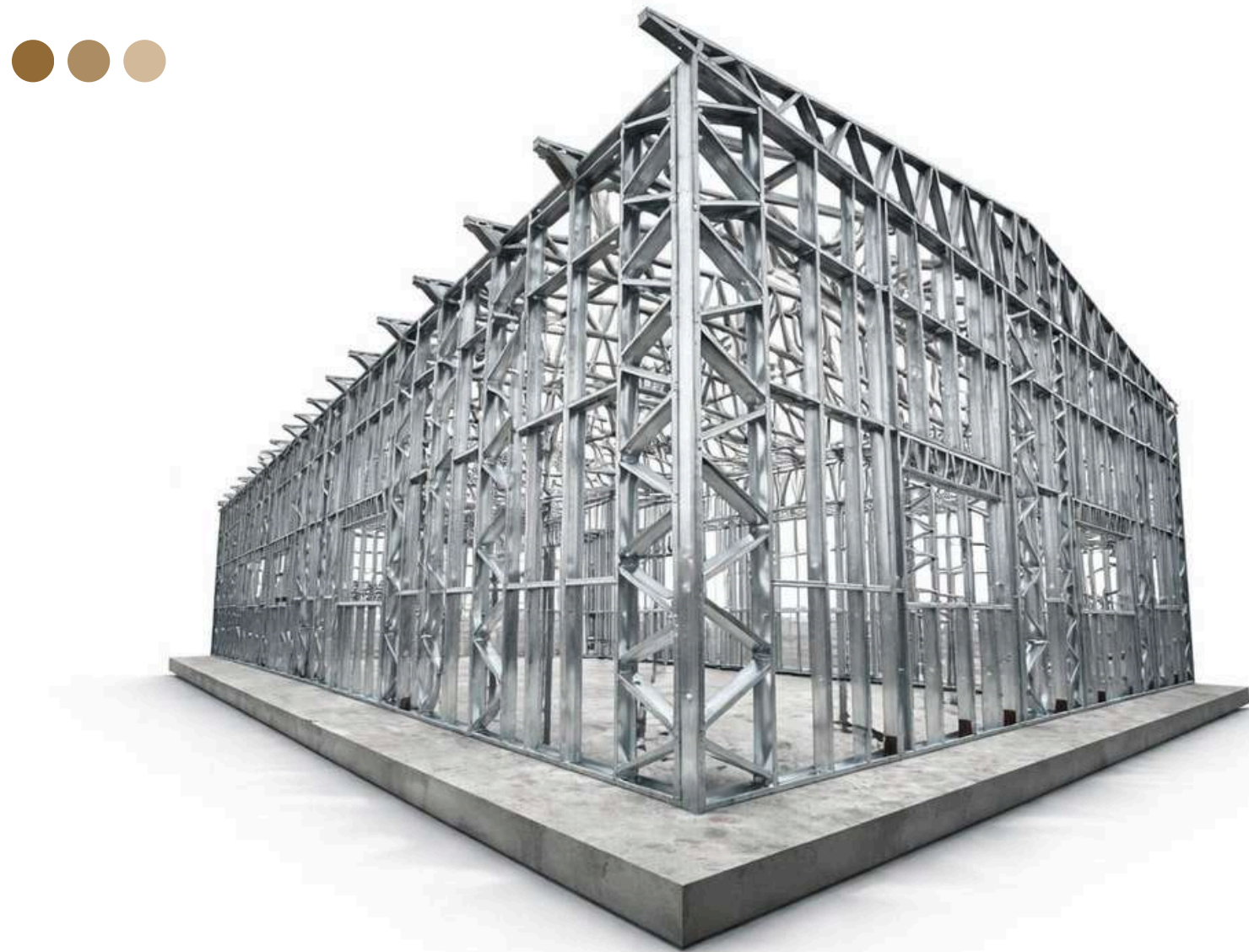
- Non-combustible insulation materials (Fire Class A1)
- High fire resistance and safety standards
- Steel is 100% recyclable
- Reduced construction waste and CO<sub>2</sub> footprint

**Dream Sunny 7800**



# LIGHT STEEL CONSTRUCTIONS FOR BUSINESS & COMMERCIAL USE

Scalable Multi-Unit Architecture - From 21 m<sup>2</sup> up to 40.000 m<sup>2</sup>



## IDEAL APPLICATIONS

- Modular homes and villas
- Tiny houses and mobile units
- Residential apartment buildings
- Worker accommodation and dormitories
- Hotels, offices, and modular complexes



## ★ DREAM HOUSES PERFECTION STANDARD

Light Steel Construction represents a core quality standard across all Dream Houses Perfection systems—delivering precision, durability, and energy-efficient performance for modern European living.

Precision-Engineered Steel Structure



# LIGHT STEEL CONSTRUCTIONS FOR BUSINESS & COMMERCIAL USE

Scalable Multi-Unit Architecture - From 21 m<sup>2</sup> up to 40.000 m<sup>2</sup>



## KEY ADVANTAGES

### High Structural Strength

- Excellent load-bearing capacity
- Earthquake-resistant construction
- Long service life with minimal maintenance

### Fast Construction Time

- Short production cycles
- Rapid on-site assembly
- Reduced construction timelines

### Energy-Efficient Building Envelope

- High-performance thermal insulation systems
- Optimized wall, roof, and floor assemblies
- Suitable for low-energy and energy-efficient buildings

### Sustainable & Environmentally Friendly

- Steel is 100% recyclable
- Reduced construction waste
- Lower CO<sub>2</sub> footprint compared to conventional construction





**Whether Tiny House, Modular Home or Modular Complex — with Dream Houses Perfection, the Choice Is Yours!**



At **Dream Houses Perfection**, you will find more than 30 unique models that combine modern design, premium quality, and flexible usage options.

Whether you are looking for a mobile Tiny House for on-the-go living, a stationary modular home for permanent residence, or a modular complex for larger-scale projects, we offer tailor-made solutions for every requirement.

Designed to save space — integrated only where functionality truly matters.



**High-quality modular or light steel construction**



# 07 Complementary Products



## COMPLEMENTARY SOLUTIONS

Smart Add-Ons for Tiny Houses & Modular Homes

### MARKISE WELT

Pergola, Awning & Shading Systems

Premium pergola and awning solutions for outdoor living:

- Bioclimatic pergola systems
- Motorized awnings and sun protection
- Wind- and weather-resistant aluminum structures
- Ideal for terraces, verandas, and garden areas

Enhances outdoor comfort while extending usable living space

### DREAMTHERM

Solar Systems & Heat Pump Technology

High-efficiency energy systems for sustainable living:

- Solar PV systems for on-grid or off-grid use
- Air-source heat pumps for heating & cooling
- Smart energy management and monitoring
- Optimized for Tiny Houses and Modular Homes

Supports reduced energy consumption and long-term cost efficiency.

### NATURIX

Decking, Facade & Veranda Solutions

Natural and durable outdoor surface systems:

- Decking solutions for terraces and walkways
- Veranda and outdoor platform systems
- Weather-resistant, low-maintenance materials
- Seamless integration with modular architecture

Creates a harmonious transition between indoor and outdoor spaces.

### PERFECTLY INTEGRATED

Designed to Match Your Home

All complementary products are:

- Fully compatible with Tiny & Modular Houses
- Customizable to project requirements
- Installable during production or post-installation
- Designed according to EU standards

### ★ ONE SYSTEM – COMPLETE SOLUTION

From the building itself to energy systems and outdoor living, Dream Houses Perfection delivers a fully integrated living concept—designed, produced, and installed as a complete solution.



**MARKISE WELT**

Mehr Lebensqualität



**DreamTherm**



**LUXINIA**

DREAM HOUSES • BESPOKE SURFACES





Exterior and interior finishing

| Section                   | Description   | Basic         | Comfort       | Premium       |
|---------------------------|---|---------------|---------------|---------------|
| Power frame               | Power frame 50 \ 155-50 \ 200 from dry (moisture content 10-12%), calibrated and planed boards, processed by a 4-sided planer, thicknesser, 1st grade fire and bioprotection (Drevofix AntiFire Impregnat, number 62243). | =             | =             | =             |
| Insulation                | Insulation with basalt wool Izovat 100kgm3, Kenner 100kgm3, mineral wool Izover 30kgm3. Vapor barrier and superdiffusion membrane Dachova NEW 115 closed circuit installation.  | =             | =             | =             |
|                           | Insulation 200/150/200 (roof/walls/floor).  | =             |               |               |
|                           | Insulation 250/200/250 (roof/walls/floor).  |               | =             | =             |
| Roof and components       | Profile sheet T-35 7016 manufacturer Türkiye.   | =             | =             | =             |
|                           | PVC Membrane.   | 92/102/109 m2 | 92/102/109 m2 | 92/102/109 m2 |
|                           | Folded roof.  |               | 45 Barn       |               |
| Exterior wall finishing   | Profile sheet T-20 7016 manufacturer Türkiye.   |               |               |               |
|                           | Imitation of beam.  |               |               |               |
|                           | Imitation of beam and folded roof.  | =             | =             | =             |
|                           | HPL panels.   |               |               |               |
| Window and door systems   | 2-chamber energy-saving double-glazed window with argon produced by Glas Trösch.  | =             | =             | =             |
|                           | Profile 60mm Koning, without lamination, white, Maco hardware, stublina push door, iQ hinges.   | =             |               |               |
|                           | Profile 60mm Koning in single-sided lamination double-glazed window, Macohardware, stublina push door, iQ hinges.   |               | =             |               |
|                           | Brokelman VIKNALAND profile 70mm in double-sided lamination, Maco hardware, reinforced door reinforcement, thickness 2.0, German FUHR lock, Hoppe handle, German Dr Hahn hinges.  |               |               | =             |
| Power grids               | All electrical networks are mounted with a VVG-NGD power cable, the non-flammable and smokeless cable is wound into a selfextinguishing corrugation, Hager fuse box.  | =             | =             | =             |
| Water supply and sewerage | The water supply system is made exclusively from high-quality materials of Türkiye Republik, Valrom   | =             | =             | =             |



ORIENTIX YAPI İTHALAT İHRACAT TİCARET LTD. ŞTİ.

Factory: Maltepe Üniversitesi Kampüsü yanı, İşletmeler OSB, Maltepe / İstanbul  
Dream Houses Perfection – Tiny & Modular Houses  
Show House / Demo Location:  
Berlin-Brandenburg, Germany (by appointment only)

THANK YOU



- +49 177 582 04 19 - Germany
- +49 163 226 47 11 - Europe
- +90 530 546 37 61 - Türkiye
- +90 531 256 57 32 - Middle East

info@dream-tinyhouses.com

www.dream-tinyhouses.com

www.tinyhausdeutschland.com

www.dreahouses.berlin

www.markise-welt.de

DreamTherm®



LUXINIA

DREAM HOUSES • BESPOKE SURFACES

| Section                        | Description   | Basic | Comfort | Premium |
|--------------------------------|---|-------|---------|---------|
| Interior doors                 | Interior door MDF Brama.  |       |         |         |
|                                | Concealed interior door, aluminum frame, Anselmi hinges, AGB lock.  |       | =       | =       |
| Ceiling interior finishing     | Stretch ceiling.  |       | =       | =       |
| Interior wall finishing        | Imitation of timber spruce 110mm and elements of decorative plaster.  |       | =       |         |
|                                | 10mm OSB board, moisture resistant drywall, fiberglass reinforcement, plastered/painted walls, and decorative plaster elements. |       |         | =       |
| Bathroom finishing             | Floor: OSB 12mm, TSP 15mm, screed 25mm. Walls: two layers of plasterboard.  | =     | =       | =       |
|                                | Floor: ceramic tiles. Walls: ceramic tiles.   |       | =       | =       |
| Floor covering                 | OSB board.  | =     | =       | =       |
|                                | Laminate AGT Class 32, ceramic tiles.   |       | =       | =       |
| Electrical accessories         | Standard switchboard devices and circuit breakers.  |       | =       |         |
|                                | Manufacturers of panelboard Hager German and Noark Czech Republic, accessories Schneider France.                                |       |         | =       |
| Internal lighting              | Led wall and ceiling lighting, track lights, recessed spot lights.  |       | =       | =       |
| Outdoor lighting               | Outdoor luminaires Videx AR072G IP54 GU10*2.  |       | =       |         |
|                                | Street lamps Premium.   |       |         | =       |
| Water heating system           | Boiler with dry tank.   |       | =       | =       |
| Plumbing                       | Installation, emergency drain with drylok 50mm, stainless grate with flange, inspection hatch-door.                             | =     | =       | =       |
| Heating and ventilation system | Underfloor heating (whole house) and programmer.  |       | =       | =       |
|                                | Recuperator Prana. Fan with forced air circulation.   |       | =       | =       |

Included in the price:

- Exterior and interior finishing.
- Entrance door and windows.
- Underfloor heating with individual controllers for each room.
- Interior doors.
- Installed utility lines (water, electricity, sewage).
- Lighting fixtures, switches, sockets, LED lighting.
- Toilet with installation system and water heater in the bathroom.
- Air recuperators.
- Utility lines for air conditioner and generator.
- Heated water connection.
- Porch with canopy and stairs (from 54 m2)

