



# Newsletter

December 2025  
Issue 08

## Welcome

As 2025 draws to a close, welcome to the latest in our series of Newsletters, proving an update on our activities and giving you an opportunity to engage better with us.

## Membership

This Newsletter coincides with many companies receiving their subscription invoice for 2026. As communicated during our recent AGM, subscriptions will see a modest increase this year in alignment with current market conditions.

In order to simplify our financial reporting, recent Members who have joined part way through a year, will receive a pro-rata invoice this year to bring your subscription inline with the calendar year.

All Members will receive a new Confirmation of Records (COR) form - it is really important that you return this to us, even if there are no changes. This to ensure that we have up-to-date contact information so that you receive all of our communications.

A reminder that our Membership terms and conditions are available to download via the [Cladding Forum](#). A 'Member of CWCT' logo, and guidance on its use is also available.

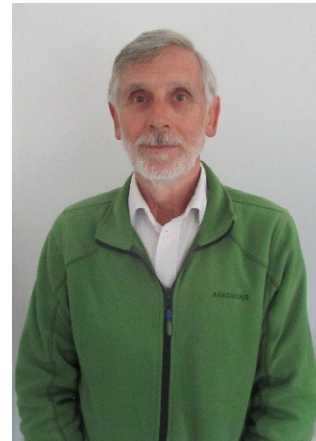
My thanks in advance for your continued support, without which our work would not be possible.

## CWCT Update

After over 25 years of service to CWCT, Alan Keiller retired in July. Alan has been integral to everything we have done in this time, and his knowledge, experience and common-sense approach will be sorely missed.

I wrote a [LinkedIn post](#) about this and it was really great to read all of the lovely comments and memories that so many people shared.

We all wish Alan a long and happy retirement – it is very well deserved.



*Alan Keiller has retired from CWCT*

After nearly 30 years, [Clive Birch](#) is stepping down as a Director of CWCT. I would like to thank Clive, not only for everything he has done for CWCT, but also for all of the support, encouragement and guidance he has provided me over the years.

As previously announced, [John Downes](#) is becoming a Director of CWCT. As a previous Sponsor, John has already made a huge impact, driving our work on [Sustainability](#) and [H&S](#), and we look forward to working with John and benefitting from his knowledge, enthusiasm and experience.

Our research project with Membership Matters, to help us better understand our Members and how we can best serve you has been concluded. My thanks to everyone who contributed to this valuable piece of work.



Firstly, the level of positive feedback we received about our work was very encouraging. The research has also provided lots of really useful information that will help us plan and prioritise in the future.

## Communication

Communication and the sharing information is really important. Please help to disseminate key CWCT updates within your organisation. It remains a frustration for us that we often receive enquiries from people who are not aware that their company is a CWCT Member and therefore are not aware of all the guidance we have available. It is in everyone's interest to change this, so please help us with this.

Please continue to regularly check the [Latest News](#) section of the CWCT website, which we use to share information. Please sign up for monthly updates straight to your inbox so you never miss an announcement.



*Sign up for the latest news from CWCT*

We also have a [LinkedIn Group](#) where we share relevant information. You can also [follow me](#) on LinkedIn. Please help spread the word and promote the work of the CWCT by liking and sharing posts that we make.

## CWCT AGM and Members' Meeting

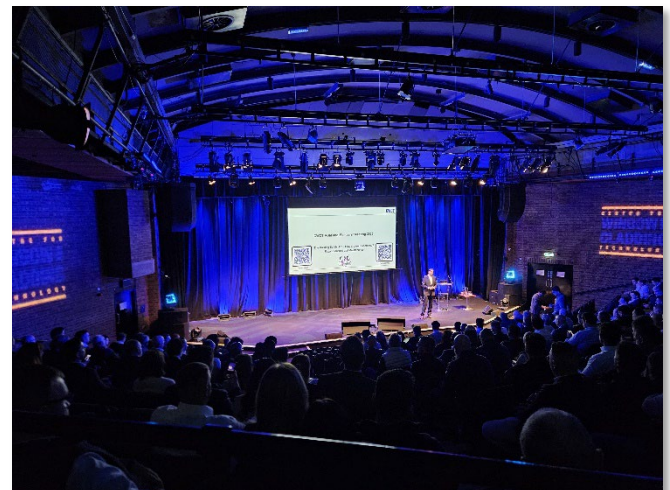
Our 2025 AGM and Members' Meeting was held in September and was a great success, with nearly 300 people in attendance.

We started the day with our AGM which included questions to the audience about their experiences of Gateway 2. The feedback from this was very positive

– it was a great way to boost engagement and gave some interesting feedback. We are keen to build on the insights gathered from this exercise and have a [survey](#) available so that further information can be provided.

The main topics for the day were the Building Safety Act and Façade Access, with excellent presentations and discussion on both these important subjects.

We also had a very powerful presentation about mental health in the construction industry. This is a subject that affects us all and is something that we still don't talk enough about.



*Our 2025 AGM and Members' Meeting*

A full review of the day is available [here](#).

Recordings and presentations of the event are now available via the [Cladding Forum](#). This includes the results from the questions we asked on Gateway 2.

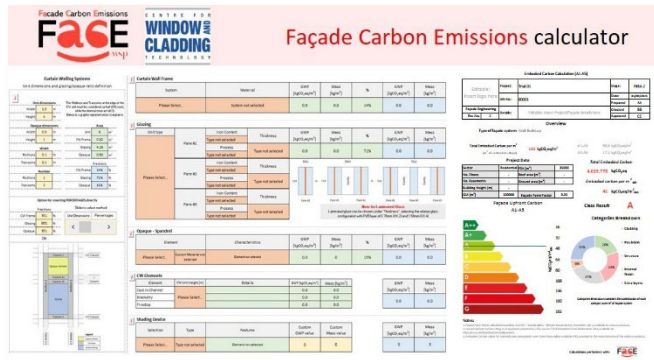
Finally, please provide your feedback by completing the following [survey](#) – your views are really important to us and will help shape future events.

## Sustainability

We are delighted to announce that our Embodied Carbon calculation tool, produced in collaboration with WSP, is now available to CWCT Members.



To recognise WSP's amazing generosity and contribution, we have made them an honorary CWCT Sponsor for the next year and look forward to continuing our work together.



*Our embodied carbon calculation tool*

We are very keen to continue developing this tool and therefore your feedback is really important. A user survey can be found [here](#).

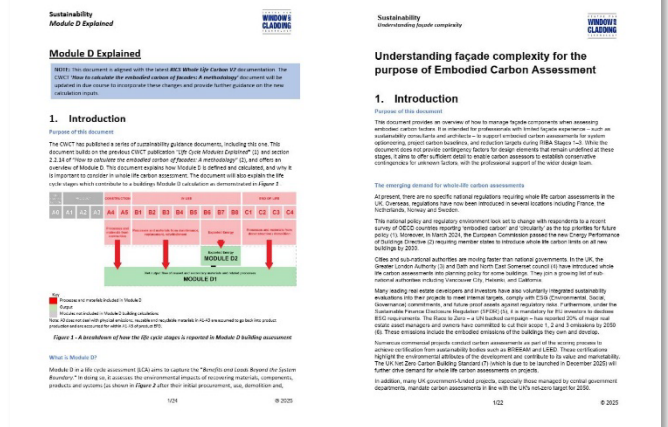
We would also encourage you to share your results from using the tool with us. This will help us build benchmark embodied carbon ranges for different façade systems.

We will soon be arranging a webinar to discuss this work further – please look out for further details of this.

In other sustainability news, we have recently published a short document aimed at sustainability consultants and those carrying out early stage embodied carbon calculations, highlighting façade complexity. It is vital that this complexity is understood to avoid underestimating the embodied carbon, which may result in issues later in the design and construction process.

This joins another short guidance document looking at the complexities of Module D, which was published earlier in the year.

Both documents are available to download via the [Cladding Forum](#).



*Our latest Sustainability guidance*

Good progress is being made with the [Sustainability Workstreams](#), including the work on Refurbishment, where draft guidance has been peer reviewed, and we are now responding to the comments received.

We were delighted to recently publish a new [Sustainability Story](#) investigating ways of reducing the upfront embodied carbon of curtain walls. Please consider submitting your own Story – this is an opportunity to highlight the fantastic work that we know many of you are doing in this area and to inspire others.

## CWCT Technical News

We recently published the latest Technical Note in our Series on fire performance. *TN116 Fire performance of facades – Application to built-up walls*, joins two other Technical Notes that were published last year, *TN113 - Fire performance of facades - Introduction* and *TN114 - Fire performance of facades - Use of combustible material*. The final TN in the series, *TN115 - Fire performance of facades – Application to curtain walls*, is in preparation.

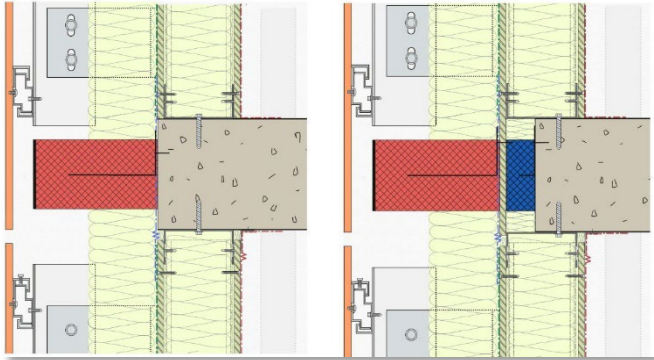
These documents are free to download for CWCT Members via the [Cladding Forum](#).

To help disseminate this guidance, a [webinar](#) was held recently. This was very well attended and gave us an opportunity to introduce the new TN and answer





questions on the subject. The presentation and recording of the webinar are available on the website. This is available to everyone, so please share this with as many people as possible.



*Cavity barriers, from TN116*

Good progress is being made on other Technical Notes, on subjects including on breather membranes and vapour control layers, interfaces and brick slip systems. Look out for these being published in the New Year.

Following an enquiry by a CWCT Member earlier in the year, we have also published guidance on the new [Qualicoat 3.0 specification](#). This highlights the potential conflict between the new specification and recycled aluminium with a high proportion of post-consumer content.

## CWCT Courses

All of our courses have been well attended again this year. Following requests, we extended the availability of our courses this year. All courses will now close on 14<sup>th</sup> December.



*All our courses are now CPD Certified*

In order to help demonstrate competency, delegates will once again be required to successfully complete a short assessment after each course in order to receive a CPD certificate. This year, all of our courses are certified by the CPD Certification Service.

We are keen to help address the challenges you face. If you have any suggestions for new courses that we could offer, please [contact us](#).

## Building Safety/Gateway 2

As highlighted at our AGM, the Building Safety Act and Gateway 2 in particular continue to cause challenges for the industry.

Earlier in the year, a House of Lords Inquiry was launched to gather feedback on building safety regulation, with a particular focus on the work of the Building Safety Regulator (BSR). In collaboration with the Society of Façade Engineering (SFE), we issued a survey to Members to inform our response. Thank you to all those who shared their experiences of this. Our response can be found [here](#).

We remain committed to providing further guidance in relation to Gateway 2 applications. Whilst there are still delays and many applications being rejected, it was encouraging to hear at the AGM that some people have been involved in successful applications. We are very keen to better understand your experiences, both good and bad. If you are interested in sharing, please [get in touch](#).

A reminder that our current guidance on Gateway 2 is available [here](#).

Thank you again for your continued support of CWCT. As always, if you have any comments on the work that CWCT are doing, [please get in touch](#).

**David Metcalfe**  
**Director**  
**December 2025**