

**Timmy
time**

COLOUR IN



IT'S
TIMMY
TIME!
f y

TimmyTime.tv

© and TM Aardman Animations 2019.



Find Teddy

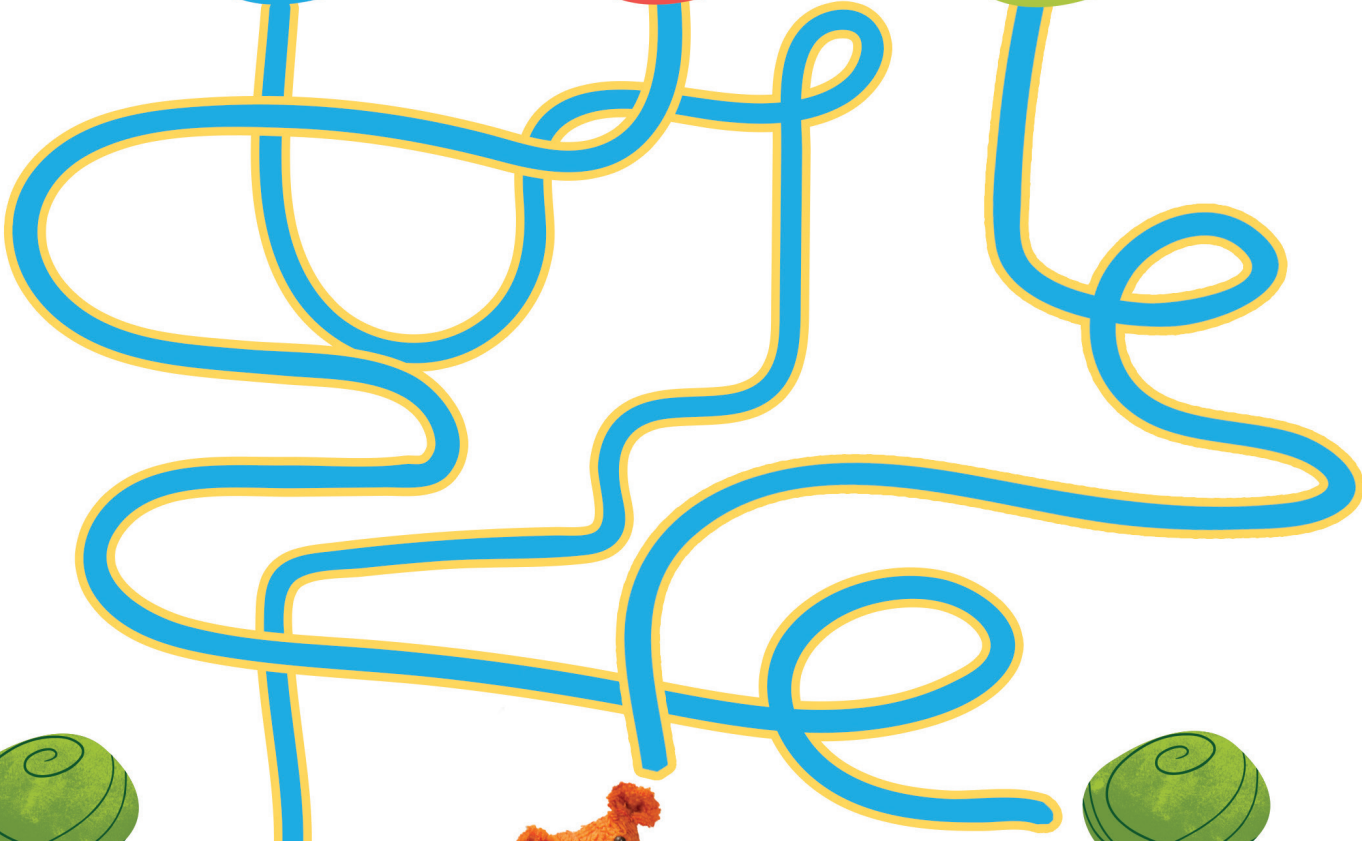


Timmy is riding his tricycle.
He's looking for Teddy.
Can you help Timmy find Teddy?

a

b

c



© Artforum Animation Ltd 2018



LEARN MORE! Watch on YouTube

YouTube / LearningTimeWithTimmy
LearningTimeWithTimmy.com



Animal Friends

There are lots of animals in Timmy's Nursery.
Match the animals to Timmy's friends.



owl

dog

sheep

duck

cat



LEARN MORE! Watch on YouTube
LearningTimeWithTimmy.com

MAKE A MASK!

WHAT YOU WILL NEED:

Colouring pencils Paints or Crayons Scissors String Glue

INSTRUCTIONS:

1

Choose your favourite mask and colour in the face and ears.



2

Cut out the mask along the dotted lines using some scissors - ask a grown up to help you with this!



3

Cut out the eye holes in the middle of the mask



4

Make a small hole either side of the mask so you can attach your string



5

Thread some string through these holes and leave enough length so that it fits round the back of your head



6

Glue the ears to the side of the mask



7

Put on your mask and make your best animal noise!



MAKE A MASK!

TIMMY

BAAAAH!

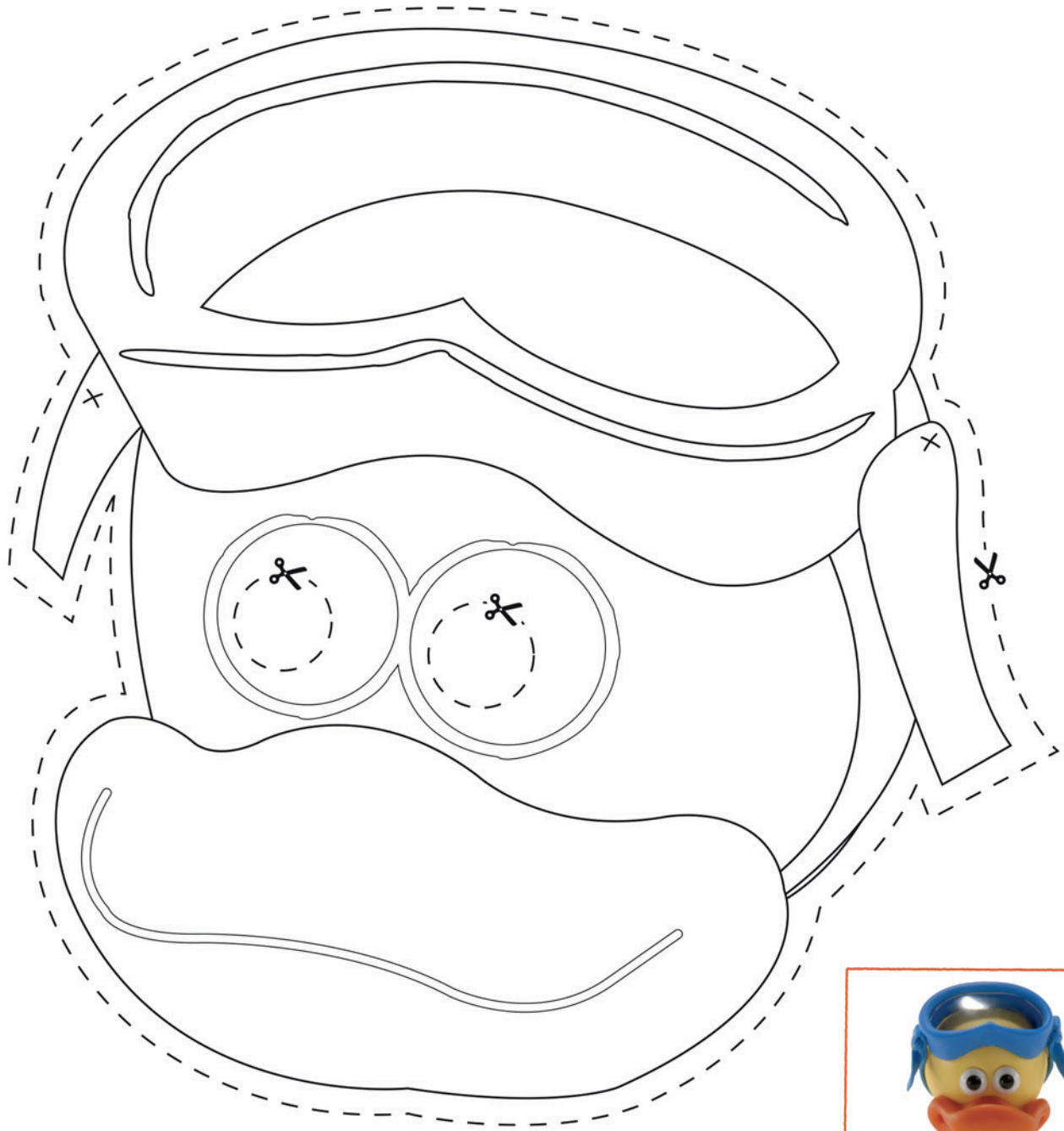




MAKE A MASK!

YABBA

QUACK QUACK!



TIMMY time



LOLLIPOP PUPPETS!

WHAT YOU WILL NEED:

A PACK OF LOLLIPOP STICKS (AVAILABLE TO BUY ONLINE OR IN CRAFT SHOPS)
PRINTABLE PAPER
SCISSORS
COLOURED PENCILS OR PENS
GLUE AND STICK TAPE
SOME STURDY CARD OR CARDBOARD

1

Print out your character templates. Colour them in and stick to thin card, then carefully cut them out.

(You might need a grown-up to help you with this bit.)

Then stick your characters onto the lollipop sticks using either glue or sticky tape.



2

Now make your background scene. Print out the four background templates and then make your frames. Print out the frame template four times and stick to some card. Ask an adult to help you cut along the dotted line. Stick the background behind the frame but leave the bottom of the frame unstuck. Slip your puppets under the frame and into the scene.

Now you can act out your favourite Timmy Time stories in your very own puppet theatre!

TIMMY time

Print out your character templates. Colour them in and stick to thin card, then carefully cut them out.

(You might need a grown-up to help you with this bit.)



TIMMY time

Print out your character templates. Colour them in and stick to thin card, then carefully cut them out.

(You might need a grown-up to help you with this bit.)



the 1990s, the number of people with a mental health problem has increased in the Netherlands. The prevalence of mental health problems is estimated to be 15% (Van't Hof *et al.* 2000). The prevalence of mental health problems is expected to increase in the future (Van't Hof *et al.* 2000).

People with a mental health problem often experience difficulties in their daily lives. These difficulties can be in the area of work, family, social life, and self-care. People with a mental health problem often experience a loss of interest in life, a loss of energy, and a loss of motivation. These difficulties can lead to a loss of independence and a need for support and care.

People with a mental health problem often experience a loss of independence and a need for support and care. This need for support and care can be met by family members, friends, and professionals. However, the need for support and care can also be met by the person with a mental health problem themselves. This is often done through self-help strategies and self-management techniques.

Self-help strategies and self-management techniques can be used to help people with a mental health problem to manage their symptoms and to improve their quality of life. These strategies and techniques can be used to help people with a mental health problem to manage their symptoms and to improve their quality of life. These strategies and techniques can be used to help people with a mental health problem to manage their symptoms and to improve their quality of life.

Self-help strategies and self-management techniques can be used to help people with a mental health problem to manage their symptoms and to improve their quality of life. These strategies and techniques can be used to help people with a mental health problem to manage their symptoms and to improve their quality of life. These strategies and techniques can be used to help people with a mental health problem to manage their symptoms and to improve their quality of life.

Self-help strategies and self-management techniques can be used to help people with a mental health problem to manage their symptoms and to improve their quality of life. These strategies and techniques can be used to help people with a mental health problem to manage their symptoms and to improve their quality of life. These strategies and techniques can be used to help people with a mental health problem to manage their symptoms and to improve their quality of life.

Self-help strategies and self-management techniques can be used to help people with a mental health problem to manage their symptoms and to improve their quality of life. These strategies and techniques can be used to help people with a mental health problem to manage their symptoms and to improve their quality of life. These strategies and techniques can be used to help people with a mental health problem to manage their symptoms and to improve their quality of life.

Self-help strategies and self-management techniques can be used to help people with a mental health problem to manage their symptoms and to improve their quality of life. These strategies and techniques can be used to help people with a mental health problem to manage their symptoms and to improve their quality of life. These strategies and techniques can be used to help people with a mental health problem to manage their symptoms and to improve their quality of life.







