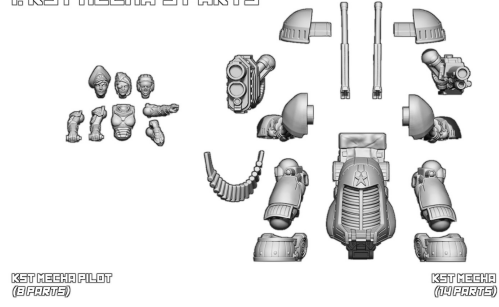
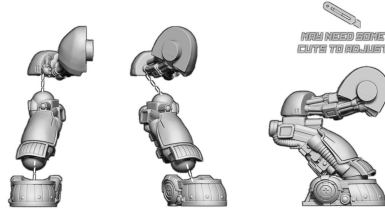


ASSEMBLY GUIDE FOR THE KST MECHA

1. KST MECHA'S PARTS

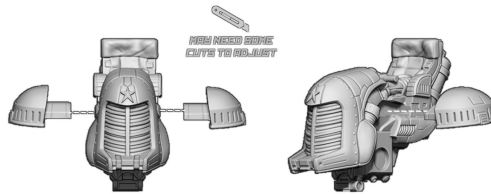


2. KST MECHA - ASSEMBLING THE LEGS



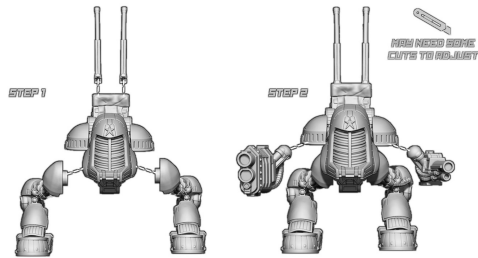
CONNECT THE THREE PARTS OF THE LEGS AS SHOWN ON THE PICTURE ABOVE AND POSE AS YOU WISH, USING THE BALL JOINT SYSTEM.

3. KST MECHA - ASSEMBLING THE SHOULDERS



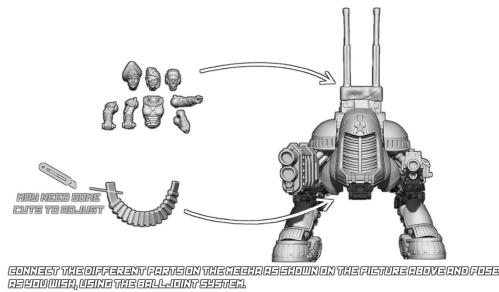
CONNECT THE SHOULDER PARTS TO THE BODY AS SHOWN ON THE PICTURE ABOVE AND POSE AS YOU WISH, USING THE BALL JOINT SYSTEM.

4. KST MECHA - ASSEMBLING THE BODY



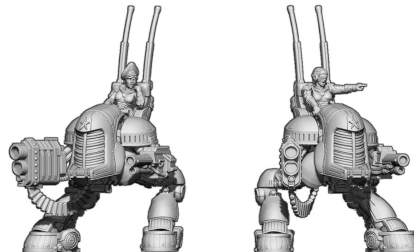
CONNECT THE DIFFERENT PARTS OF THE BODY AS SHOWN ON THE PICTURE ABOVE AND POSE AS YOU WISH, USING THE BALL JOINT SYSTEM.

5. KST MECHA - ADD THE PILOT AND ARMOS



CONNECT THE DIFFERENT PARTS ON THE MECHA AS SHOWN ON THE PICTURE ABOVE AND POSE AS YOU WISH, USING THE BALL JOINT SYSTEM.

6. KST MECHA - FOR KURGAN PEOPLE !



EXAMPLES OF KST MECHA ASSEMBLY