

LOCKLY **GUARD™**

**LATCH (679L) | Lever Latch Smart Lock
Z-Wave Edition**

**DUO (679D) | Interconnected Smart Lock
Z-Wave Edition**

Z-Wave Smart Lock



Z-Wave Module

User Manual

LOCKLY PRO™ www.LocklyPRO.com

Introduction

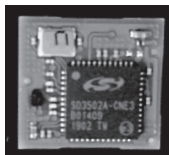
The Lockly Guard Smart Lock Z-Wave® Module is a security-enabled device that uses encrypted Z-Wave messages to communicate securely with other compatible Z-Wave products. Designed specifically for the Lockly Guard Smart Lock, this module requires a Security Enabled Z-Wave Controller to unlock its full potential. It can also work with other devices in the Z-Wave network, which can act as repeaters to extend range.

This module can be integrated into any Z-Wave network that includes certified products, regardless of the manufacturer. However, it's important to note that using the Z-Wave Module may decrease the smart lock's battery life. Additionally, the Lockly Guard Smart Lock Z-Wave Module support the Basic Set Command Class.

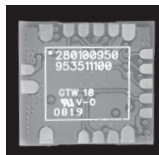
Overview

The Z-Wave Module is an interface device for the Lockly Guard Smart Lock, designed to connect to a Z-Wave Controller using the Z-Wave protocol.

This document outlines the specific command classes used when the Lockly Guard Smart Lock Z-Wave Module interacts with a Z-Wave controller.



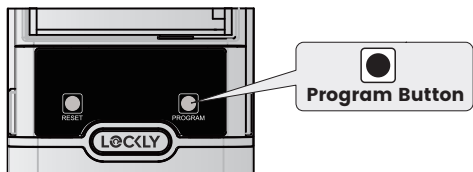
**Front Side of
Z-Wave Module**



**Back Side of
Z-Wave Module**

Adding/Deleting Z-Wave

Add by manual programming



To add or remove the Lockly Guard Smart Lock, first put the Z-Wave controller into Adding/Deleting mode.

1. Remove the battery cover from the smart lock.
2. Press the program button three times to enter pairing or deleting mode. The bluetooth indicator on the exterior assembly.



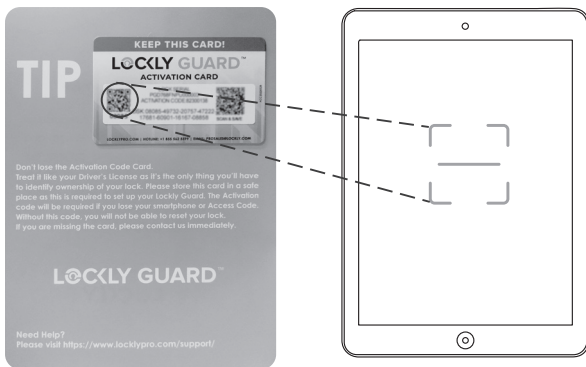
IMPORTANT

If the Lockly Guard Z-Wave has already been added to one Z-Wave Controller, it cannot be added to another one. To use it with a different controller, you must first delete it from the existing one.

Adding/Deleting Z-Wave continued

Now, the Z-Wave module on the Lockly Guard is in inclusion mode. To add the smart lock to the Z-Wave Controller, you can either scan the QR code or manually enter the DSK code. You can find both the QR code and DSK code on the Activation Card.

To add the lock using the QR code, use the Z-Wave Controller to scan the QR code on the left side of the Activation Card. Follow the prompts on the controller to finish the process.



NOTE: Please wait for the inclusion process to finish.

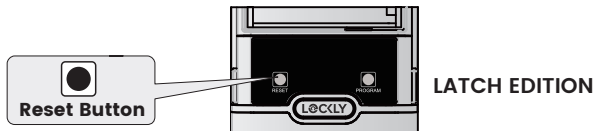
If inclusion is successful, the lock will make a long beep, and the indicator light will stop flashing.

If inclusion fails, the lock will make two short beeps, and the indicator light will stop flashing. This means the pairing or deletion mode has ended. Also, if you don't do anything within 2 minutes, the mode will automatically exit.

Factory Reset

To reset the Lockly Guard Smart Lock, you will need your Activation Code, which can be found on the Activation Card that came with the smart lock.

Please note that resetting the smart lock will erase all previously stored data. You will also need to reconfigure the Z-Wave settings. Please refer to the appropriate reset procedure below based on your situation.



Not Connected to Lockly Manager app

To reset the smart lock, press and hold the Reset Button for 3 seconds.

Connected to Lockly Manager app

In the Locker Manager app's Settings menu, select Perform Factory Reset. The smart lock will restart and reset. After the reset, you'll need your Activation Code to reconnect the smart lock to the app.

Not connected to Lockly Manager app, but connected to the Z-Wave module

To reset the smart lock, press and hold the Reset Button for 3 seconds.

Connected to both the Lockly Manager app and the Z-Wave module

To reset the smart lock, press and hold the reset button for 3 seconds. When you hear a long beep, the reset is complete. The Z-Wave connection will be automatically unbound (Z-Wave has been reset). As a result, unlocking with IQPanel or other Z-Wave Controllers will no longer work.



If you get a new smartphone, log in to your existing Lockly Manager account on the device. Then, follow the app prompts to reconnect to the smart lock.

LOCKLY PRO™

TOTAL ACCESS SOLUTION



We're Here to Help!
[locklypro.com/contact-us](https://www.locklypro.com/contact-us)

For the latest version of this manual, please visit the link below:

<https://www.locklypro.com/installation-and-manuals>