



PGD728WE1

Lockly Secure Pro 2025 Version

Installation guide

LOCKLY
Enjoy the freedom™

Welcome

Access the latest Install video and installation guide.



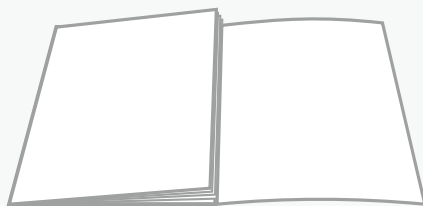
Scan to watch
step-by-step
video installation



Scan for the most
updated version
of this manual.



Reference foldout



Get an overview of all installation components and parts with the handy reference foldout on the back page. Keep it open for reference as you go through each step.



We're Here to Help

Your Lockly smart lock comes with lifetime technical support. Feel free to contact us with any questions or comments.



(669) 500-8835



help@Lockly.com

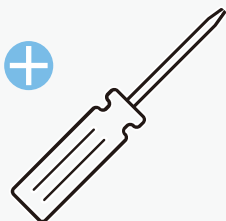


support.Lockly.com

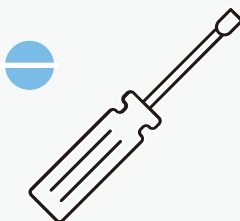
What You'll Need

Tools

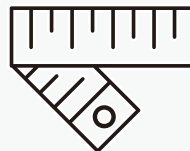
Phillips-Head Screwdriver



Flathead Screwdriver

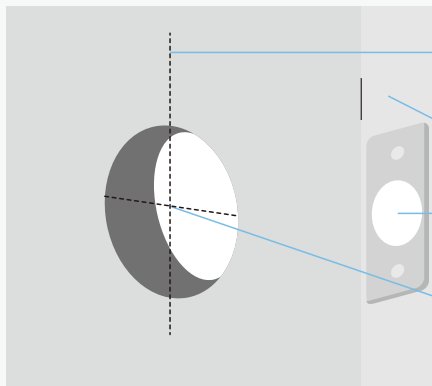


Tape Measure or Ruler



Prepare Door

Confirm existing door or use provided template to bore new holes.



Back-Set: 2 3/8" (60mm) or 2 3/4" (70mm)

Thickness: 1 3/8" (35mm) to 3 1/8" (80mm)

Deadbolt Bore Hole: 1" (25.4mm)

Cross-Bore Hole: 2 1/8" (54mm)

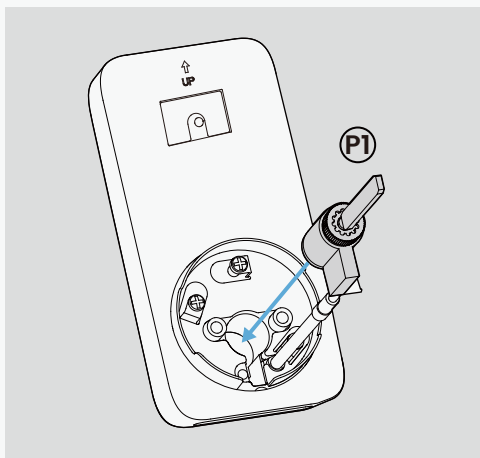
Installation

Lock Cylinder Installation	05
Deadbolt Installation	06
Install Lock Exterior	07
Interior Mount Plate	08
Interior Lock	09/10
Battery & Self-check	11
Strike Plate	12
Door Sensor	13
Troubleshooting/FAQs	16/17
Parts Overview	18/19

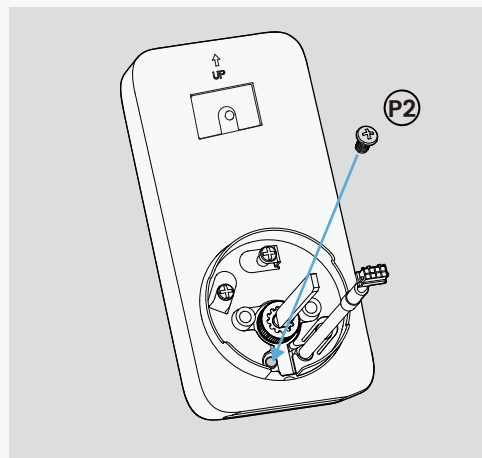
Lock Cylinder Installation (Optional)

Before installing the smart lock, follow the below steps on this page to complete the installation of the lock cylinder.

If your lock already comes with the lock cylinder installed, you can skip this step.



Insert the lock cylinder into the cylinder hole of the exterior assembly.



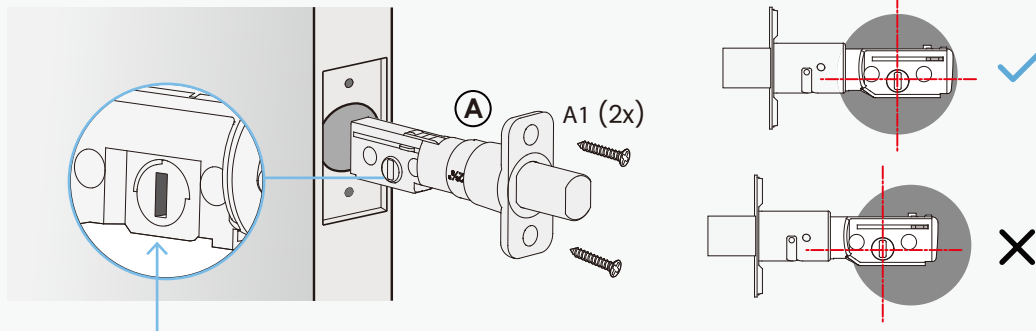
Tighten the cylinder screw clockwise with a screwdriver.



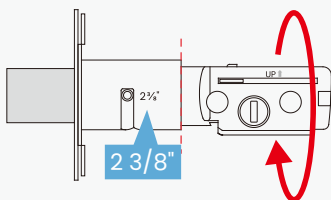
If you use a power tool to tighten the screws, set it to the lowest speed. Before you start, line the screw up straight with the threads to avoid cross-threading and damaging the screw hole.

Deadbolt Installation

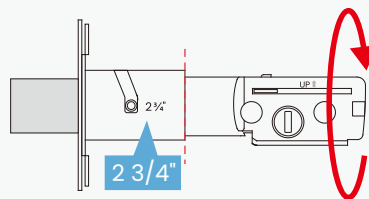
Ensure deadbolt blade slot aligns center in the door hole.



The deadbolt comes set to $2\frac{3}{8}$ " (60mm) ; adjust to $2\frac{3}{4}$ " (70mm) if needed.



To adjust hold the faceplate and twist the body counter-clockwise until it snaps to $2\frac{3}{8}$ " (70mm).

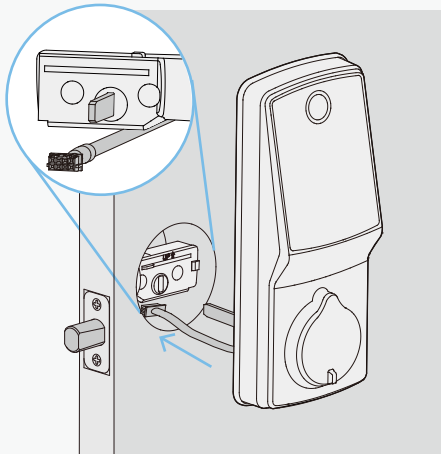
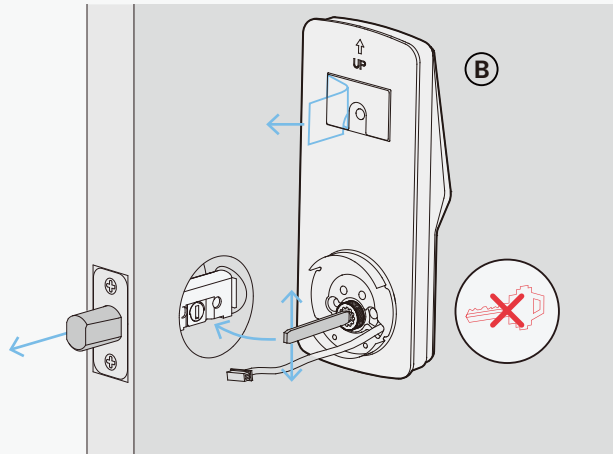


To adjust hold the faceplate and twist the body clockwise until it snaps to $2\frac{3}{8}$ " (60mm).

Installing Lock Exterior

Ensure the torque blade is vertical (up and down) with the deadbolt extended then peeling off film on adhesive strips.

Note: do not insert a key.



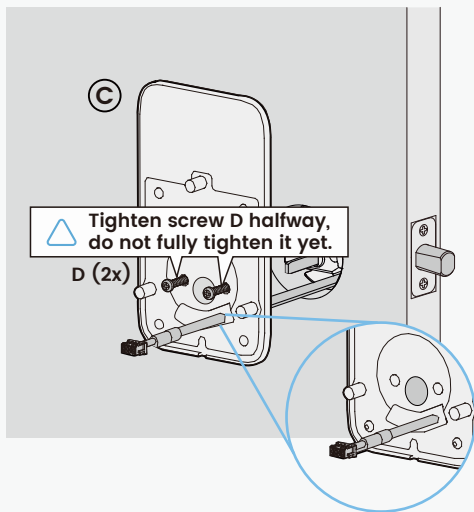
Place assembly and torque blade through the deadbolt slot and guide connection cables under the deadbolt as shown.

Complete mounting by aligning and securing until flush to exterior door surface.



If you install the lock on a door that gets direct sunlight and rain, we strongly recommend using the touchscreen cover that we provided. This cover will help protect the touchscreen from weather conditions, ensuring it works well and lasts longer.

Installing Interior Mount Plate



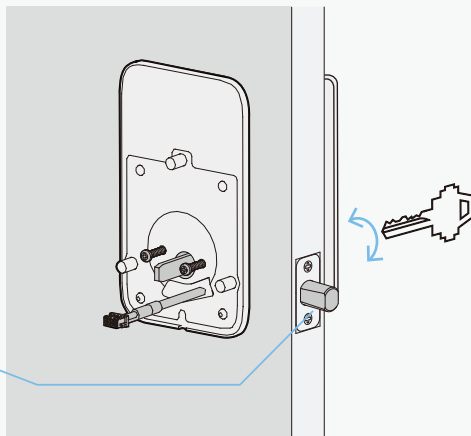
Push the cables through the notched gasket in the lower corner. Hold the mounting plate in place so its holes line up with the holes in the door. **Make sure the torque blade is in the center.** Turn the D screws in only halfway so the plate is not fully tight yet.



Before you tighten screw D, check that the cables are not pinched or squashed.

Using the key, check that the deadbolt locks and unlocks smoothly. If the key does not turn the deadbolt, revisit the steps above and ensure the plate is properly aligned with the exterior assembly.

When finished, leave the deadbolt extended and remove the key, otherwise the door lock will not work properly after installation.

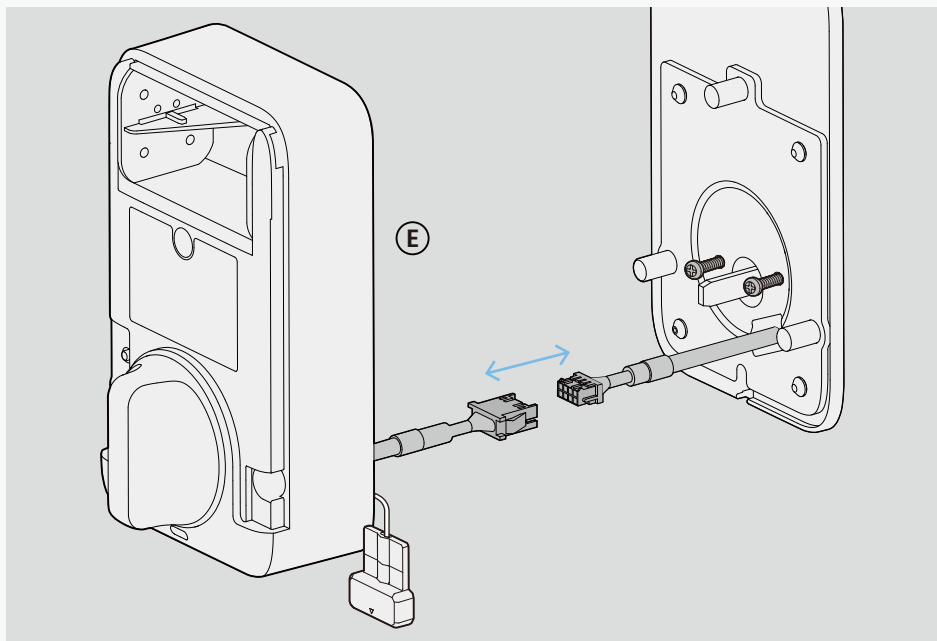


Installing Interior of Lock

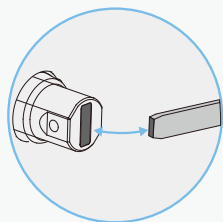
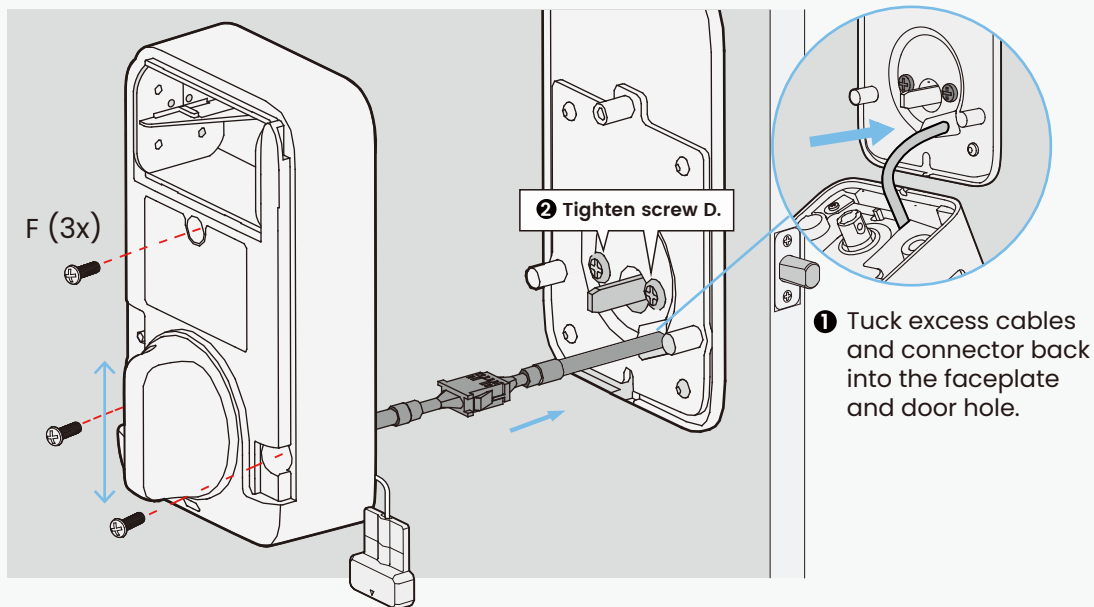
Remove the battery cover from interior Assembly **E** before installation.

Before installing the interior assembly, determine the appropriate direction outlet for the wired sensor. Refer to page "**Installing the door sensor**" for more.

With interior assembly **E**, connect cable ends to their matching counterparts.



Installing Interior of Lock



Align outer thumbturn and torque blade shaft, **make sure both are in the vertical position**. Carefully tuck cables and connector back into the faceplate and door hole under the deadbolt. Be careful not to force or pinch the cables.

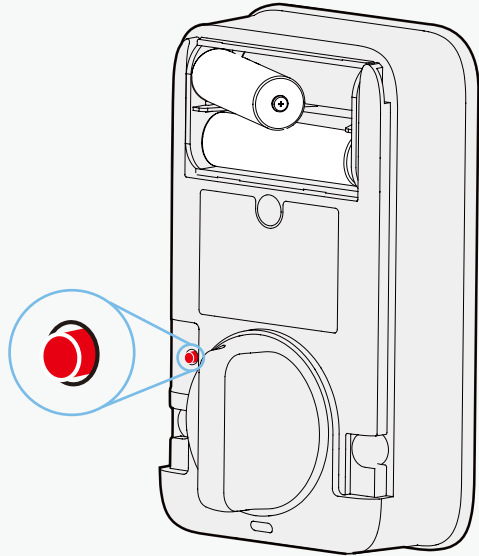
Place the interior assembly against the mounting plate. Secure to the mounting plate with F screws (3x).

Install Battery & Perform Self-check

With **door open** and **deadbolt fully extended**, insert the battery.

With the battery installed, **hold** the program button for **4 seconds**. The lock will automatically start a self-check (release the program button once self-check starts). This process programs the lock for right or left swinging doors and verifies correct installation.

Once self-check is complete, slide and snap the battery cover in place to secure the battery.



If the deadbolt isn't extending properly, it might be because it was not installed correctly. Please check the installation steps to make sure everything is done right.

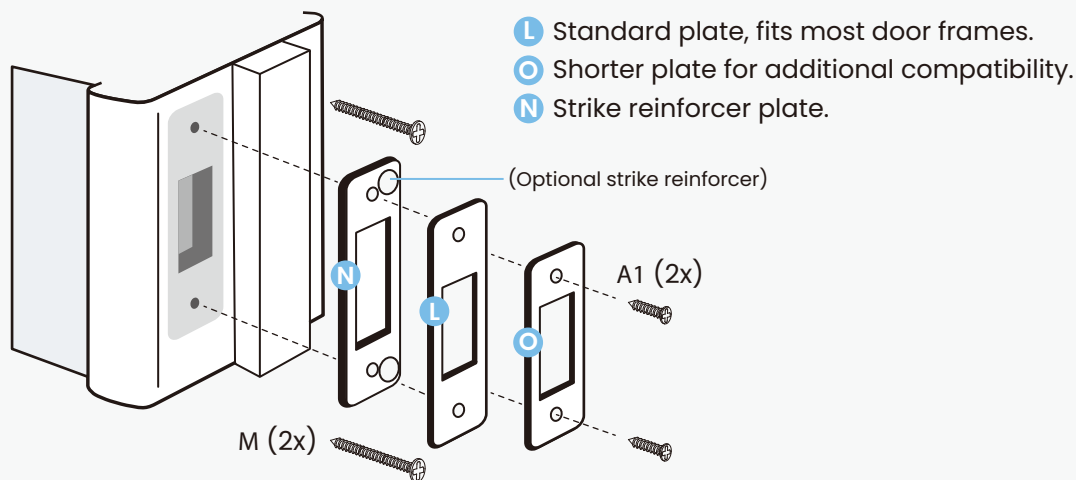


Scan to watch

Installing Door Frame Strike Plate

Two strike plates (L & O) are provided. There is also an optional strike reinforcer plate N that can only be used with the L strike plate.

Choose the strike plate that best fits your door frame and needs. Alternatively, you can use your existing deadbolt strike plate. Whether existing or new, **it's crucial that the deadbolt operates smoothly without any binding or catching.**

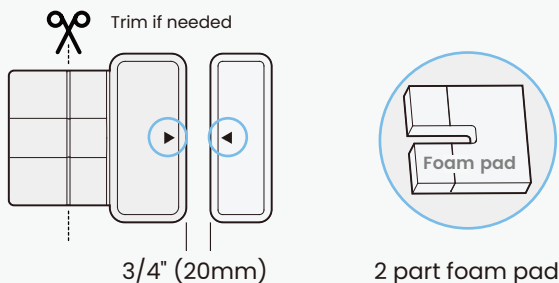


Due to variations in door and frame designs, you may need to adjust the strike plate to ensure smooth deadbolt operation. **This is crucial. If the deadbolt binds or catches, the lock will beep rapidly, indicating it cannot close due to misalignment or excessive rubbing. Refer to the included Strike Plate Installation Locator Kit for help.**

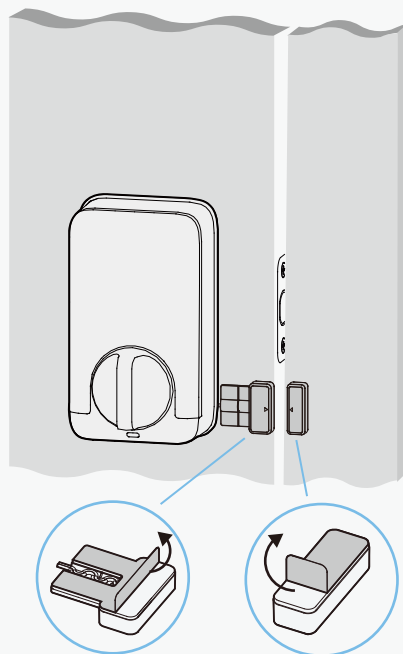
Installing the Door Sensor

Door sensors provide real-time open/close push notifications and status updates.

They also enable voice control with Siri, Amazon Alexa, or Google Assistant. Install the sensors on the interior side on clean, grease-free, and dry surfaces. Sensors can be mounted on either the left or right side (example shows right side).



Align the arrows on each sensor, ensuring the gap is less than 3/4". **Sensors must be as level with each other as possible.** Use adhesive foam pads to adjust the door wired sensor's height if needed.



Keep Door Sensor out of direct sunlight, high heat, and large metal objects that may interfere with wireless signals.

Continue to Setup and Use

Refer to guide "Setup and Use" to complete installation.



Scan for the most updated version.

Troubleshooting FAQs

Troubleshooting/FAQs

Can I install the smart lock myself, or do I need a professional?

Lockly smart locks are designed to install yourself by following the provided step-by-step installation guide or online video instructions. However, if you're not comfortable with DIY installations, hiring a professional is recommended.

Does Lockly offer professional installation support services?

We provide free remote installation support to assist you with the installation process. To schedule this support, please reach out to us via email at help@lockly.com, call customer support at (669) 500-8835, or visit our help portal at [Lockly.com/help](https://lockly.com/help).

How do I know if my door fits a LOCKLY lock?

Before purchasing, it's a good idea to measure your door's thickness and backset accurately and compare these measurements with the specifications provided by Lockly. If you have any doubts or questions, our customer support or installation guides can provide additional assistance to ensure a proper fit for your door.

Where can I download the Installation Video and Manuals?

For comprehensive video tutorials and manual guides on installing Lockly locks, please visit lockly.com/pages/installation.

How to re-key a LOCKLY smart lock?

Lockly uses 6-pin cylinders for the Deadbolt Editions, which can be replaced using rekeying kits from various brands. Always follow the specific instructions provided by Lockly for your model, as rekeying procedures can vary. If you need clarification or are uncomfortable with rekeying, we recommend seeking help from a professional locksmith, to ensure it's done correctly and efficiently.

Troubleshooting/FAQs

How long does the installation process take?

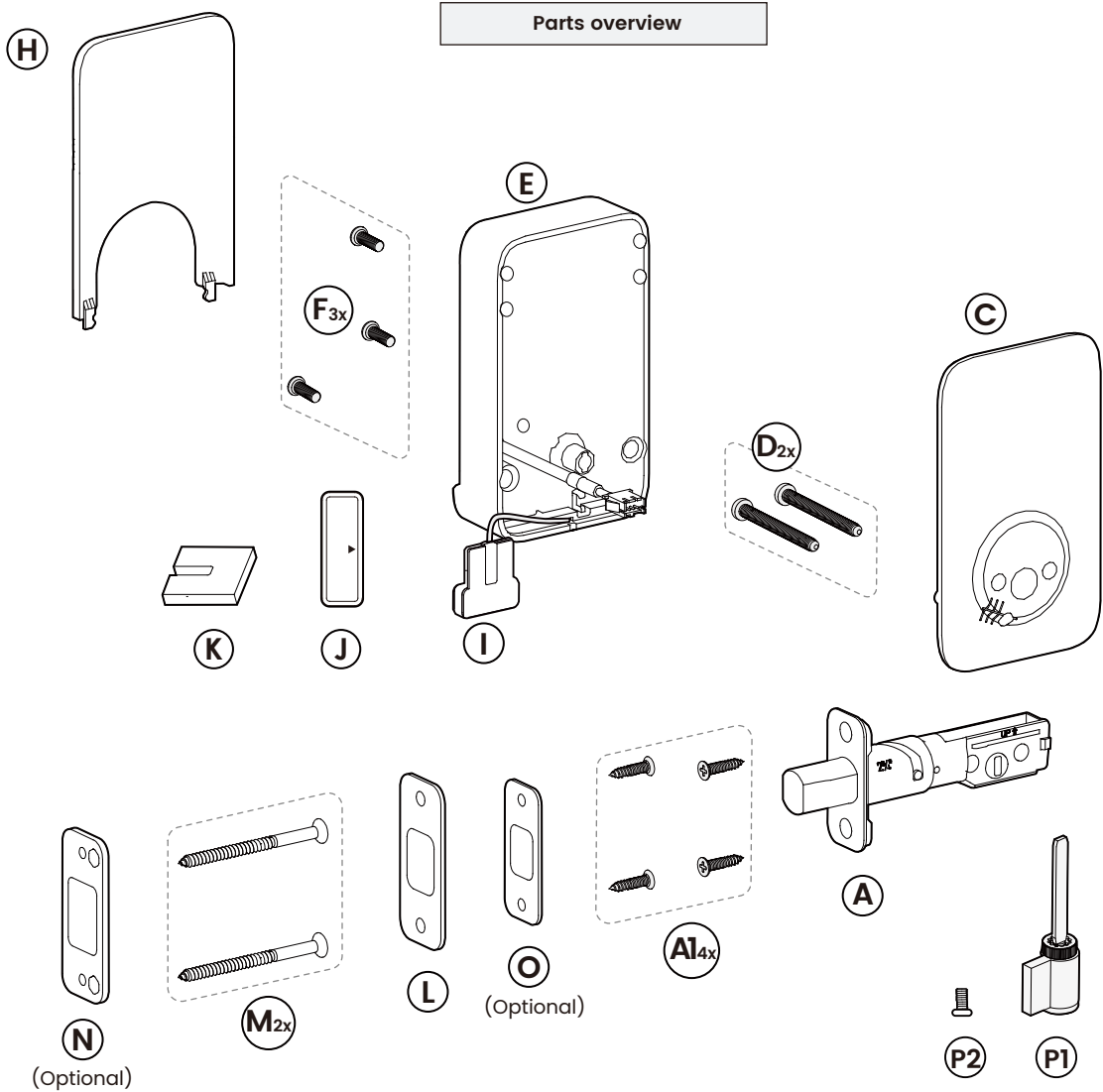
The installation process usually takes about 20–35 minutes, depending on your experience and the type of door.

What should I do if the smart lock doesn't fit my door?

If the smart lock doesn't fit, you may need to make minor adjustments to your door, door frame or consult Lockly customer service at: support@lockly.com or (669) 500-8835 for assistance.

How do I connect the smart lock to my Wi-Fi network?

After installing the lock, follow the instructions in the app to connect it to your Wi-Fi network. You'll need your Wi-Fi password handy.



Parts	
A	Deadbolt
A1	KA4 x 20mm Screw
B	Exterior Assembly
B1	Touchscreen Cover
C	Mounting Plate
D	PM5 x 60mm Screw
E	Interior Assembly
F	PM4 x 12mm Screw
H	Battery Cover
I	Wired Sensor
J	Sensor Magnet
K	Foam Pads
L	Strike Plate
M	ST5 x 70mm Screw
N	Strike Reinforcer
O	Strike Plate
P	Keys
P1	Lock Cylinder
P2	BM3 x 6mm Screw
Q	Activation Card



We'd love your feedback.

Please let us know how your installation went or if you have any other comments.

Our short survey takes less than 2 minutes to complete.



Scan to start

Lockly Secure Pro

As always, we welcome your comments and feedback at: help@Lockly.com



© Copyright 2025 Lockly All Rights Reserved

Patent No. US 9,881,146 B2 | US 9,853,815 B2 | US 9,665,706 B2 | More patents refer to <https://lockly.com/pages/our-patents>

Use of the Works with Apple badge means that an accessory has been designed to work specifically with the technology identified in the badge and has been certified by the developer to meet Apple performance standards. Apple is not responsible for the operation of this device or its compliance with safety and regulatory standards. The Bluetooth® word mark and logos are registered trademarks owned by the Bluetooth SIG, Inc., and any use of such marks by Lockly is under license. Other trademarks and trade names are those of their respective owners. Google, Android, Google Play and Google Home are trademarks of Google LLC., Amazon, Alexa and all related logos are trademarks of Amazon.com, Inc., or its affiliates. Apple, Apple Home, Apple Watch, HomeKit, HomePod, HomePod mini, iPad, iPad Air, iPhone, and tvOS are trademarks of Apple Inc., registered in the U.S. and other countries and regions.