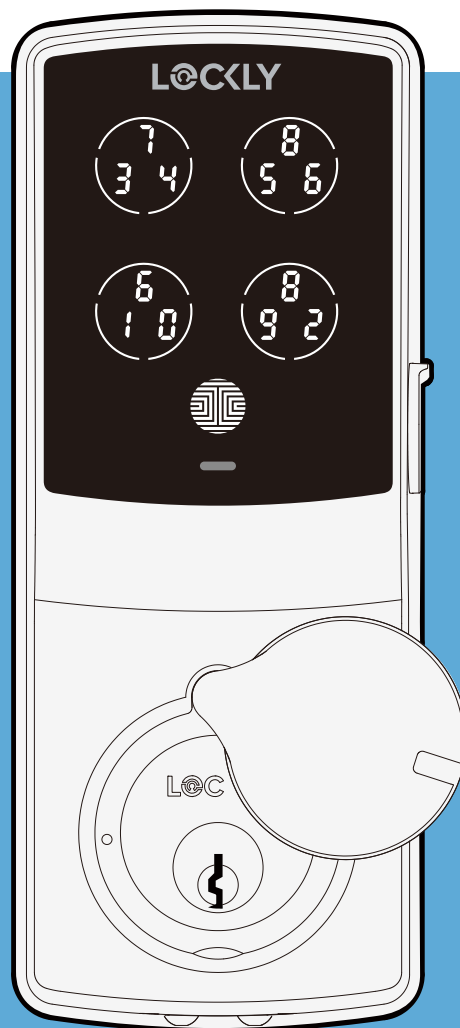


LOCKLY SECURE PRO

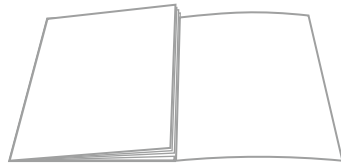
INSTALLATION GUIDE

DEADBOLT EDITION



Welcome!

This guide will walk you through step-by-step how to install and get your Lockly Secure Pro up and running. Installation generally takes less than 30 minutes. If you have any questions please reference our online support at: [Lockly.com/support](https://lockly.com/support) or call (669) 500-8835 for help.

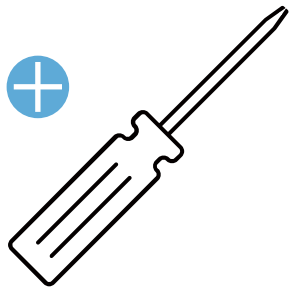


Reference installation parts overview foldout on back page

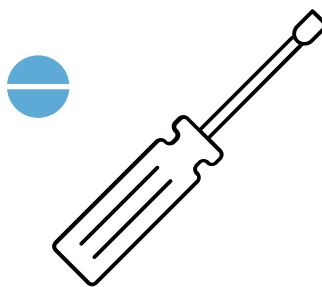
What You'll Need

Tools

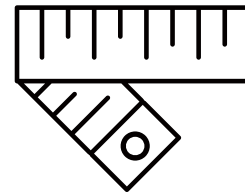
Phillips-Head Screwdriver



Flathead Screwdriver

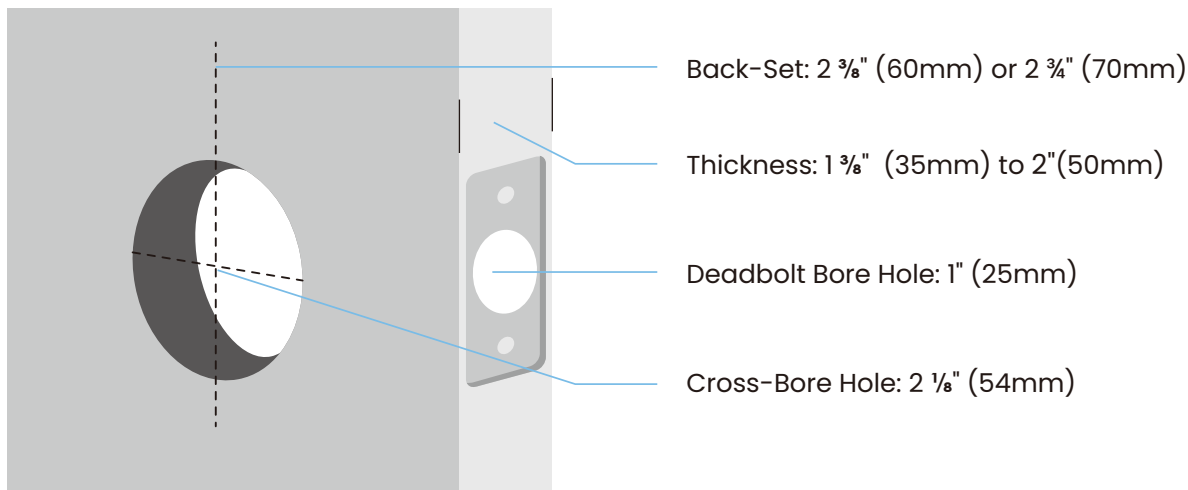


Tape Measure or Ruler



Prepare Door

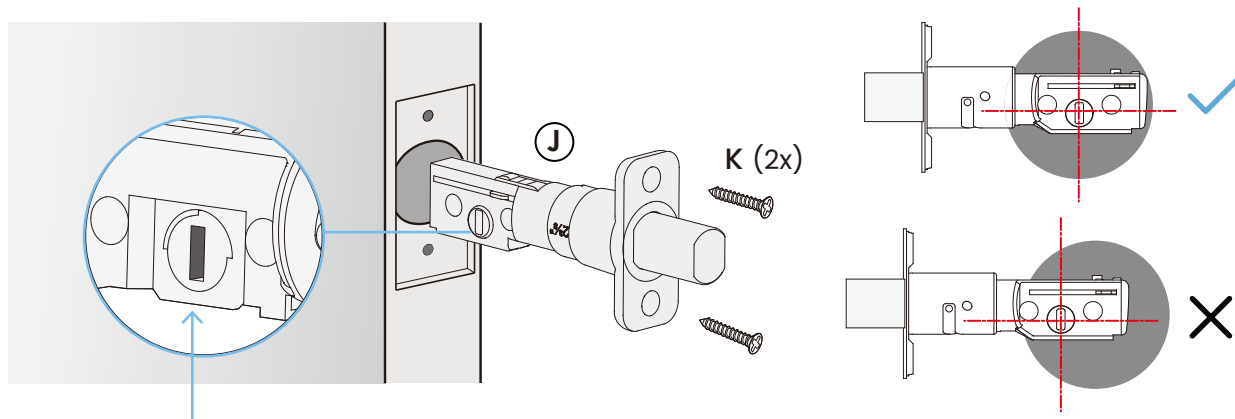
Confirm existing door or use provided template to bore new holes.



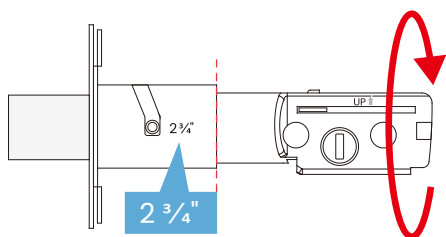
Step 1

ADJUST DEADBOLT AND INSTALL

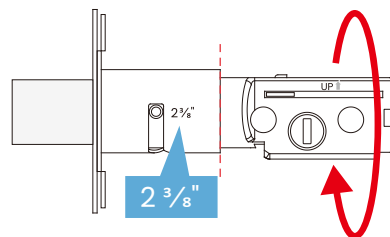
Ensure deadbolt blade slot aligns center in the door hole.



The deadbolt comes set to $2\frac{3}{4}$ " (70mm), adjust to $2\frac{3}{8}$ " (60mm) if needed.
(Wear gloves to protect from possible pinching)



To adjust hold the faceplate and twist the body clockwise until it snaps to $2\frac{3}{8}$ " (60mm).

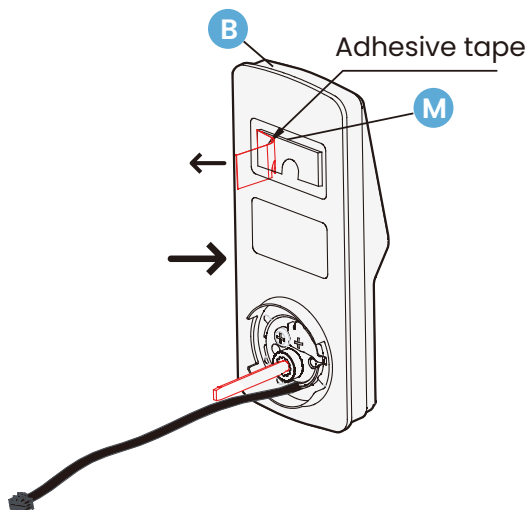


To adjust hold the faceplate and twist the body counter-clockwise until it snaps to $2\frac{3}{4}$ " (70mm).

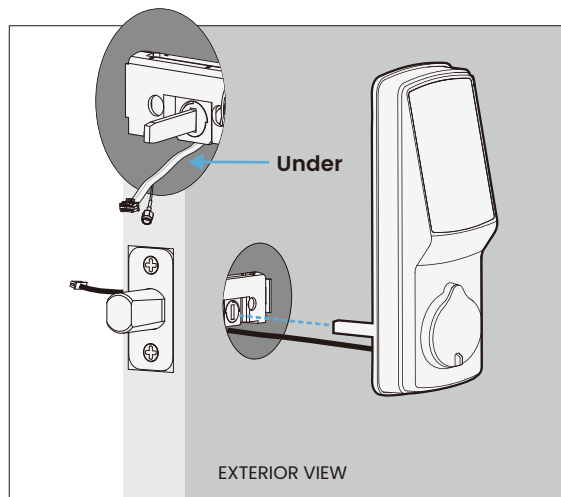
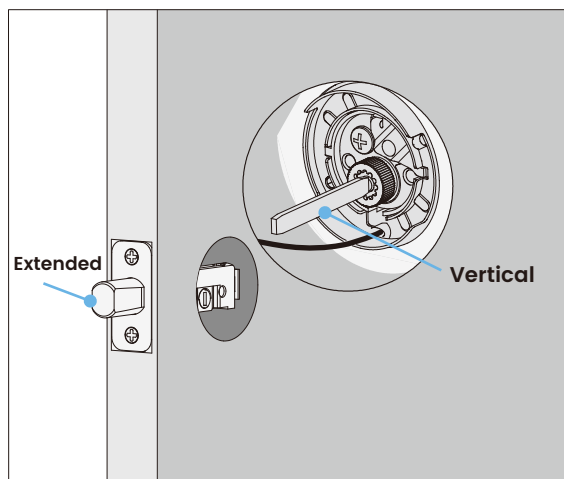
Step 2

INSTALLING EXTERIOR ASSEMBLY (B)

Check the exterior assembly **B** alignment to door hole and deadbolt before peeling off film on adhesive strips.

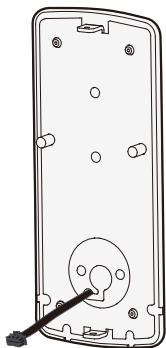


Peel film from adhesive strips and make sure torque blade is in the **vertical** position with the deadbolt **extended**. Place assembly and torque blade through the deadbolt slot and guide connection cables through the cross-bore hole under the deadbolt as shown. Complete mounting by aligning and securing until flush to exterior door surface.

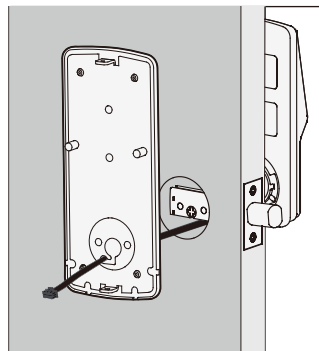


Step 3

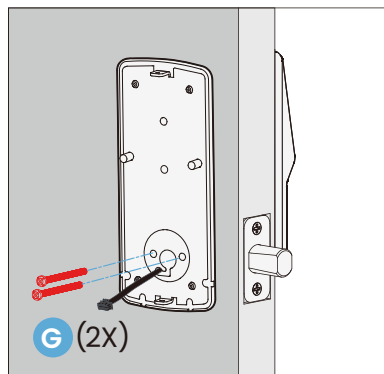
INSTALLING INTERIOR ASSEMBLY (F)



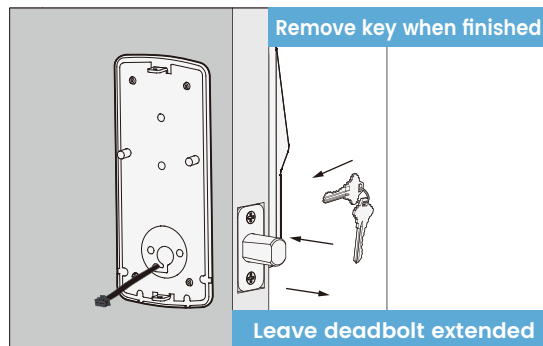
1: Check interior mounting plate **D** alignment to your door hole before securing with adhesive strips.



2: Align and secure mounting plate with adhesive strips. Guide connection cables through the hole and secure to the lower left notched hole.



3: Insert and tighten by hand 2 **G** screws located on the left and right of the blade. Check alignment and tighten with screwdriver until mounting plate is securely placed on door.



4: Use the key to ensure deadbolt locks and unlocks smoothly (no binding or rubbing). **IMPORTANT:** when finished, leave the deadbolt extended and remove the key before proceeding to the next step.



QUICK TIP

When installing screws by hand, turn screws clockwise several turns then counterclockwise one turn to ensure smooth threading and no cross threading.

Step 4

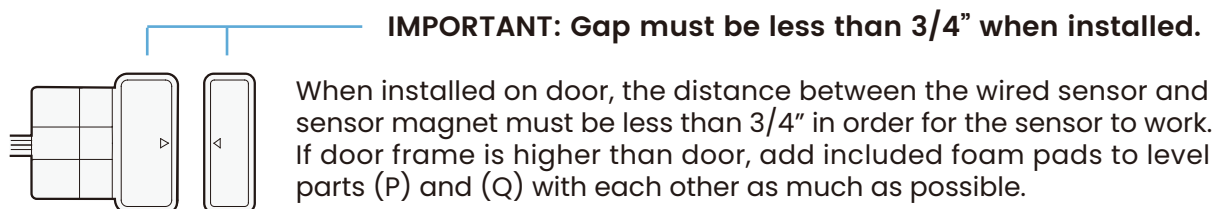
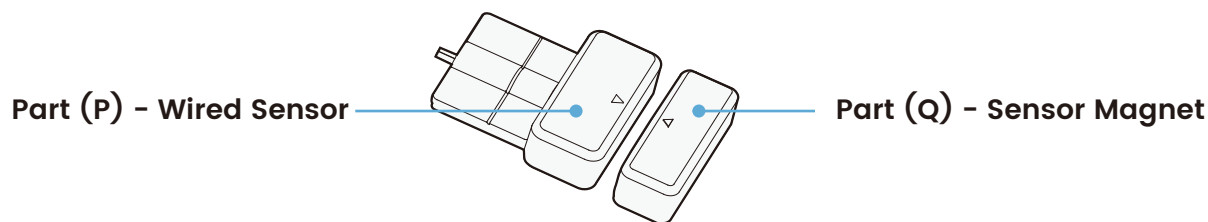
PREPARING DOOR SENSORS FOR INSTALLATION

Do not mount (install) door sensors yet. You will install in step 7.

About door sensors

Door sensors provide real-time door condition status, such as the ability to verify if the door is securely closed. It also sends push notifications to your phone whenever your door opens and enables voice control with Amazon Alexa or Google assistant.

Lockly Secure Pro comes with a pre-wired door sensors consisting of two parts:



QUICK TIP

Lockly door sensors comes in Grey (PGA715) and Matte Black (PGA716) that can be ordered through our customer hotline: (669) 500-8835 or by email: help@Lockly.com.

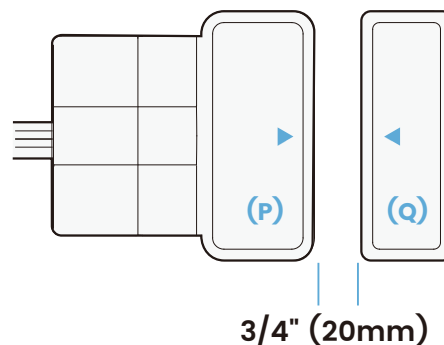
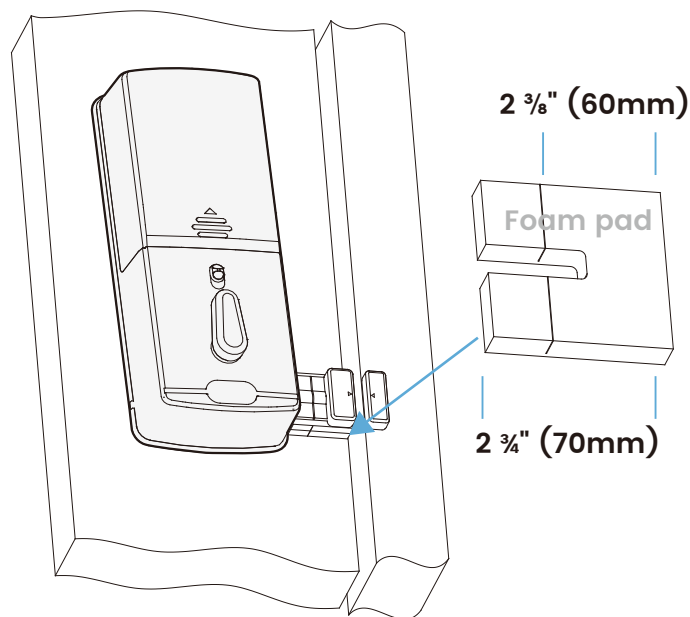
Removal of Sensor (optional)

There may be circumstances where the sensor cannot be installed because of molding/door limitations or is not aesthetically desirable. The sensor wired to the lock is removable by carefully pulling its connector from the circuit board. **If removed, some features and functionality will not be available, such as real-time condition status.**

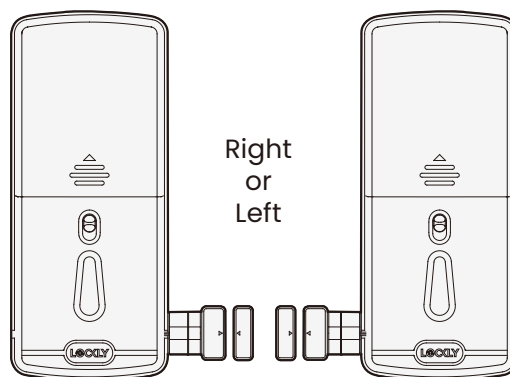
Step 4 continued

PREPARING DOOR SENSORS FOR INSTALLATION

When installing the door sensors, make sure the arrow on the wired sensor (P) aligns to the arrow of the sensor magnet (Q) as close as possible.



The sensors need to be as close to level as possible. If needed, use the adhesive foam pad(s) to adjust the height of the wired sensor.



Make sure you install the Door Sensor indoors on a clean and dry surface. Gently wipe the surface of your door and door frame where you wish to install the Door Sensor and make sure it's dry before installing.

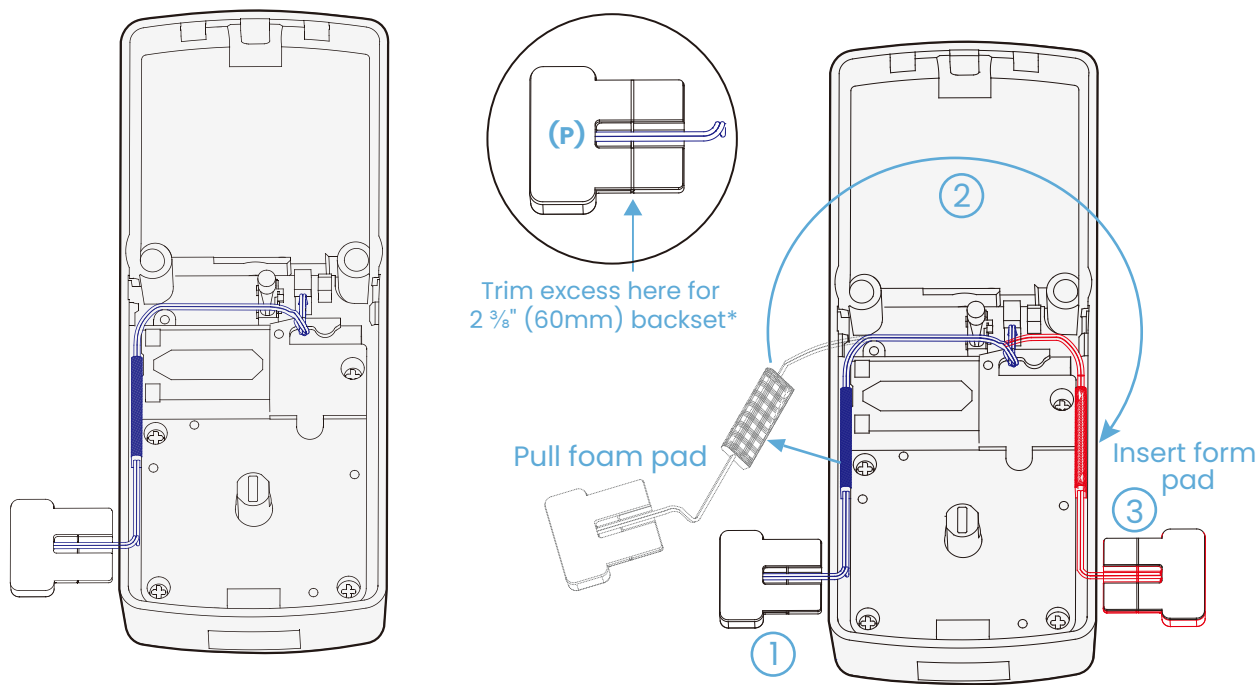
Step 4 continued

PREPARING DOOR SENSORS FOR INSTALLATION

The interior assembly comes with the pre-installed wired door sensor setup for a right swing doors with 2 $\frac{3}{4}$ " (70mm) backset*.

Trim excess part (P) for doors with 2 $\frac{3}{8}$ " (60mm) backset as shown below.

For left swing doors, re-route the door sensor wire through the side channel. Pull the foam pad then re-insert to secure the wire. Discard the excess part (e) for doors with 2 $\frac{3}{8}$ " (60mm) backset as shown below:



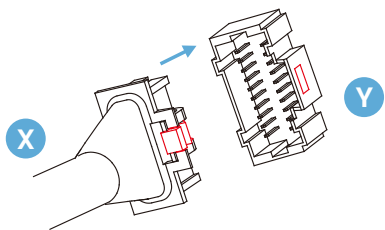
***Backset = distance of the door edge to the center of the cross-bore door hole.**

DO NOT INSTALL THE SENSORS YET

Step 5

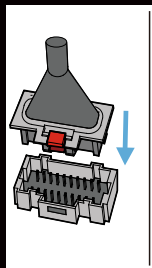
INSTALLING THE INTERIOR ASSEMBLY (F)

Plug the cable coming through mounting plate (D) into the interior assembly (F) as shown. Tuck cable under eyelet hooks and route to the right on interior assembly (F).

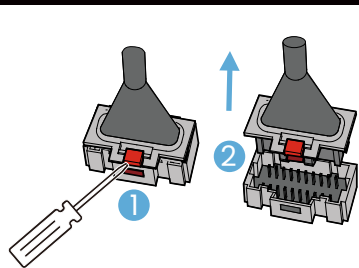


Plug **X** into **Y**, match red side of plug with red on socket - insert tightly.

Install Cable

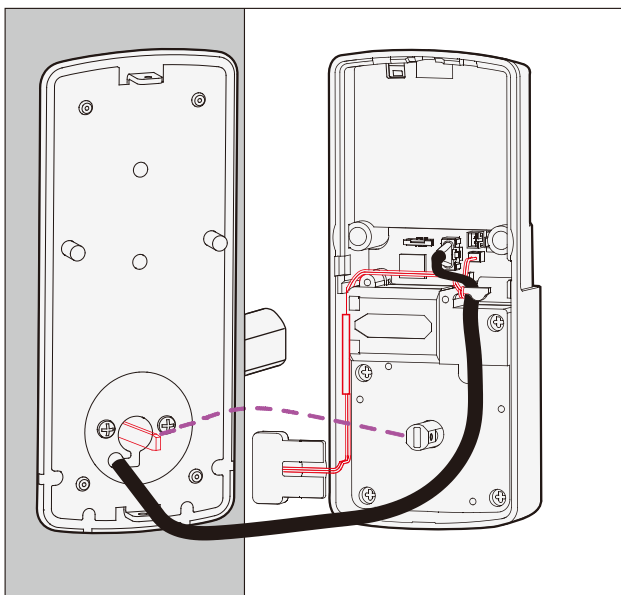


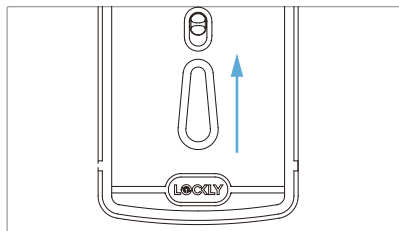
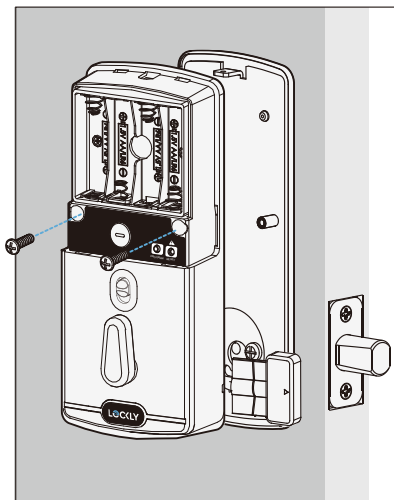
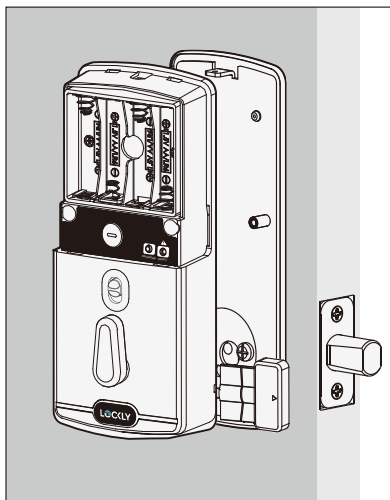
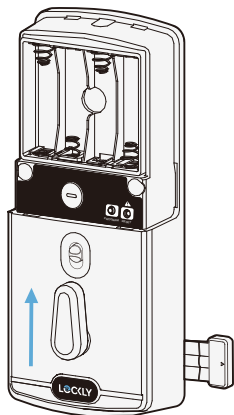
Remove Cable



IMPORTANT:

If you need to disconnect this cable, use a screwdriver to hold down the tab (marked red) before carefully unplugging. **DO NOT FORCE** as this may result in damaging the lock.





Torque Blade Thumb turn shaft



Align torque blade with thumbturn shaft, **make sure both are in the vertical position.**



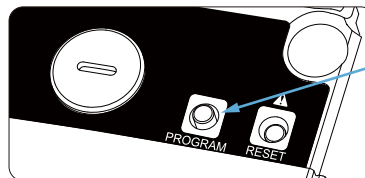
Before placing the interior assembly onto the mounting plate, ensure the thumbturn is **vertical**.

Place the interior assembly against the mounting plate and make sure the torque blade is inserted to the thumbturn shaft.

Secure the interior assembly to mount platedoor with 2 **1** screws.

Step 6

INSTALLING BATTERIES



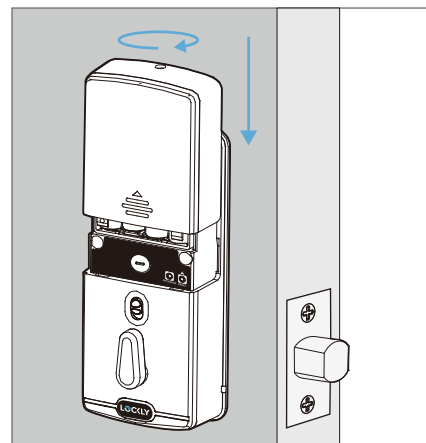
1: With door open and deadbolt fully extended, place ribbon inside compartment and insert 4 batteries (note correct -/+ polarity).

2: After all batteries are installed, PRESS and HOLD the **program button** for 10S. The lock will automatically start self-check (release program button once check starts). The self-check process determines right or left swinging door and is very important to ensure correct installation. **IMPORTANT:** if lock is not properly installed it will open and close repeatedly.

3: Once self-check completes ensure the lock operates smoothly by manually locking and unlocking the door using the thumb turn on the interior assembly. The deadbolt should operate smoothly without any interference or binding. If necessary, repeat step 2 and ensure that (a) the deadbolt was extended and (b) the torque blade was inserted vertically while the deadbolt was extended.

4: Swipe your hand across touchscreen. The lock should close (lock). If the touchscreen is ON, touch the lock should lock as well. If deadbolt bounces back or unlocks automatically it means something is not installed correctly. Go back and repeat step 2, same as above.

5: Once self-check is complete, install battery cover, secure with screw on top (do not over tighten).



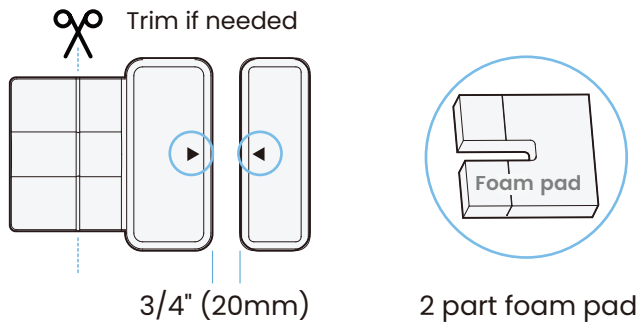
Step 7

INSTALLING THE DOORS SENSOR

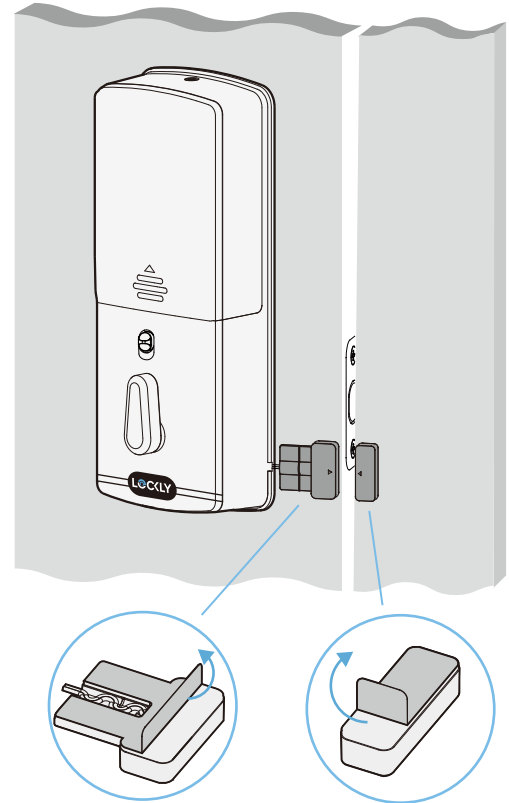
Make sure you have prepared the door sensors for installation, see step 4

Install the sensors on the interior side on clean, grease-free, and dry surfaces.

Sensors can be mounted on either the left or right side (example shows right side).



Align the arrows on each sensor, ensuring the gap is less than 3/4". **Sensors must be as level with each other as possible.** Use adhesive foam pads to adjust the door wired sensor's height if needed.



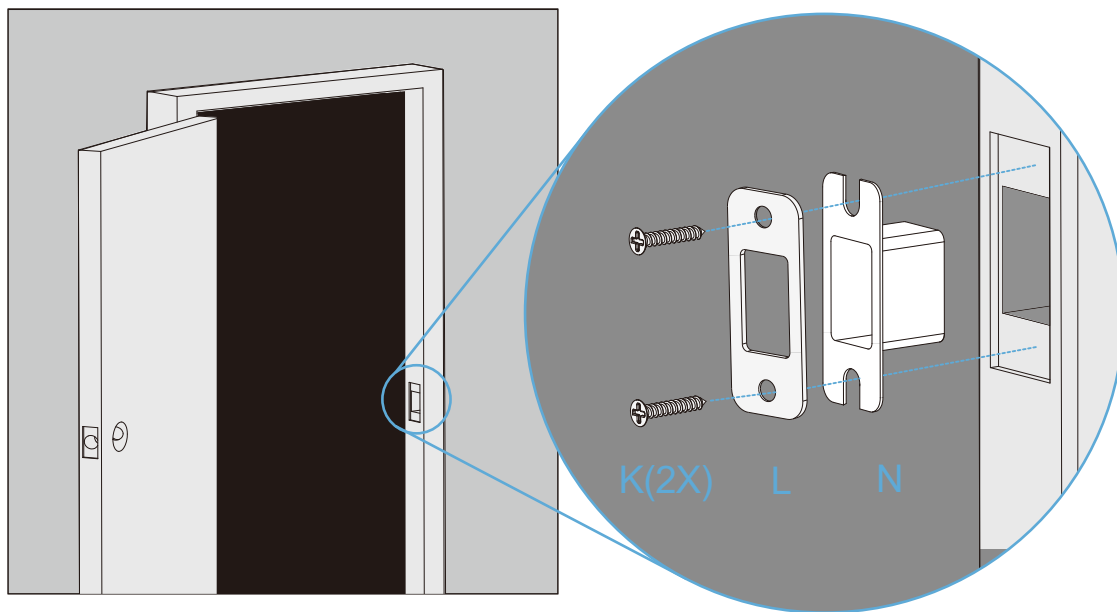
Keep Door Sensor out of direct sunlight, high heat, and large metal objects that may interfere with wireless signals.

When properly installed, the Lockly logo blinks red when door opens and closes.

Step 8

INSTALLING STRIKE PLATE

Use the supplied door strike or use your existing as long as deadbolt operates smoothly without binding or catching.



IMPORTANT

Due to variations in door and frame designs, you may need to adjust the strike plate to ensure smooth deadbolt operation. This is crucial. If the deadbolt binds or catches, the lock will beep rapidly, indicating it cannot close due to misalignment or excessive rubbing. If you have any questions please reference our online support at: [Lockly.com/support](https://lockly.com/support) or call (669) 500-8835 for help.

Step 9

DOWNLOAD LOCKLY APP

You have completed the Lockly physical lock installation. To enable live monitoring and voice control with Hey Google or Amazon Alexa, you will need to setup the included Secure Link Wi-Fi hub and pair it with the Lockly Secure Pro deadbolt smart lock door sensors.

Before connecting Secure Link Wi-Fi hub download the Lockly Home App on your smartphone. It's required to finish setup and to set (pair) the connection between hub and lock.

Scan or visit
[Lockly.com/app](https://lockly.com/app)

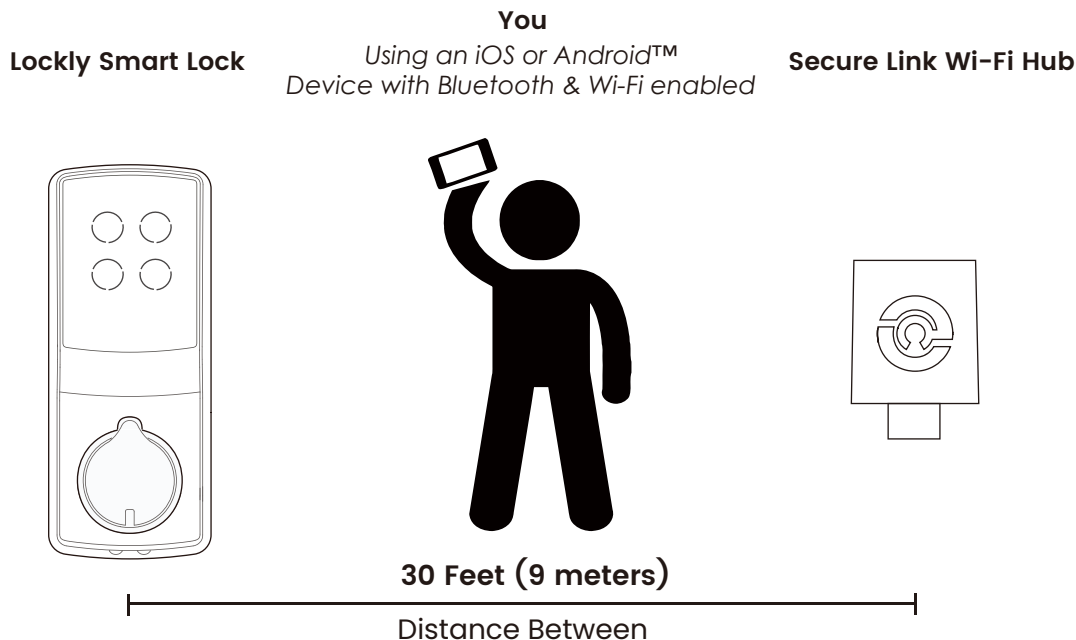


Step 10

SETTING UP THE SECURE LINK WI-FI HUB

To set up your Lockly Secure Pro, choose an appropriate location for the Secure Link Wi-fi Hub for optimum performance (see below). For optimum connectivity, it is recommended that the hub be no further away from the lock than 30 feet (9 meters).

During the setup process position yourself between the lock and the Secure Link Wi-Fi Hub—ideally no more than 30 feet (9 meters) apart. Ensure your iOS or Android device has both Bluetooth and Wi-Fi enabled.



QUICK TIP

The Secure Link requires a strong wireless signal for optimal performance. Make sure the Secure Link will be installed in a location with a strong 2.4 Ghz wireless signal. Sometimes distances between Wi-Fi hub and lock can vary due to circumstances. If you are having difficulty setting up optimal range of 30/ft or less, we're here to help. Call our customer care team: (669) 500 8835, or visit <https://www.support.lockly.com> for suggestions and troubleshooting tips.

Plug the Secure Link Wi-Fi Hub into the 5V 1A USB AC adapter and plug the AC adapter to your wall socket.



A **GREEN** LED indicator light will flash slowly to indicate that the Wi-Fi Hub is ready to connect.



LED Indicator is located next to the Setup Button

Once you have confirmed that your Secure Link Wi-Fi Hub is ready to connect to your lock, open the Lockly Home App from your smartphone. **Make sure you are standing between the Wi-Fi hub and Lockly smart lock**, then Add New Device and follow the on screen instructions.

Hands-Free Voice Control

Control and check your status using only your voice with Amazon Alexa or Google Assistant-enabled devices.



To setup your lock to work with either voice assistant, download the Amazon Alexa or Google Home App and add a new Amazon Alexa Skill or Lockly Action on Google.

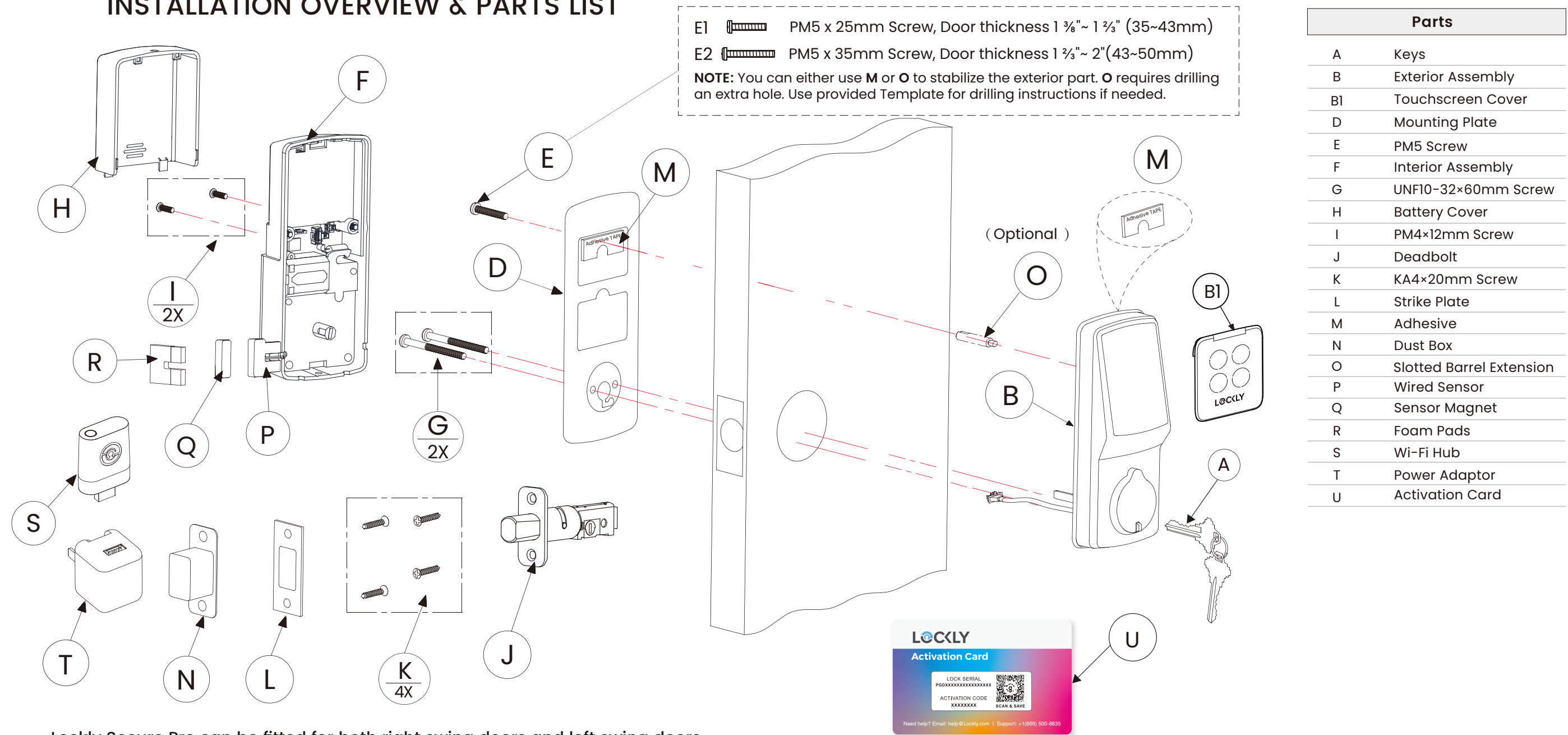


QUICK TIP

In Google Home or Amazon Alexa app, add Lockly skill for Alexa or Lockly Action on Google, then follow on screen instructions. See full list of commands, help videos, or troubleshooting your Lockly at <https://www.support.lockly.com/>

Google, Android, Google Play and Google Home are trademarks of Google LLC.

INSTALLATION OVERVIEW & PARTS LIST



Lockly Secure Pro can be fitted for both right swing doors and left swing doors.



Go to [Lockly.com/installation](https://lockly.com/installation) download the latest version of this installation guide.

OR

Scan the code on your phone to watch step-by-step installation video.





For the latest version of this manual, please visit the following link:
<https://lockly.com/pages/installation>



We're Here to Help!
Email: help@Lockly.com

© Copyright 2025 Lockly All Rights Reserved

US Patent NO. US 9,881,146 B2 | US Patent NO. US 9,853,815 B2 | US Patent NO. US 9,875,350 B2 | US Patent NO. US 9,665,706 B2 | US Patent NO. US 11,010,463 B2 | AU Patent NO. 2013403169 | AU Patent NO. 2014391959 | AU Patent NO. 2016412123 | UK Patent NO. EP3059689B1 | UK Patent NO. EP3176722B1 | Other Patents Pending

The Bluetooth® word mark and logos are registered trademarks owned by the Bluetooth SIG, Inc. , and any use of such marks by Lockly is under license. Other trademarks and trade names are those of their respective owners. Google, Android, Google Play and Google Home are trademarks of Google LLC. , Amazon, Alexa and all related logos are trademarks of Amazon.com, Inc., or its affiliates.