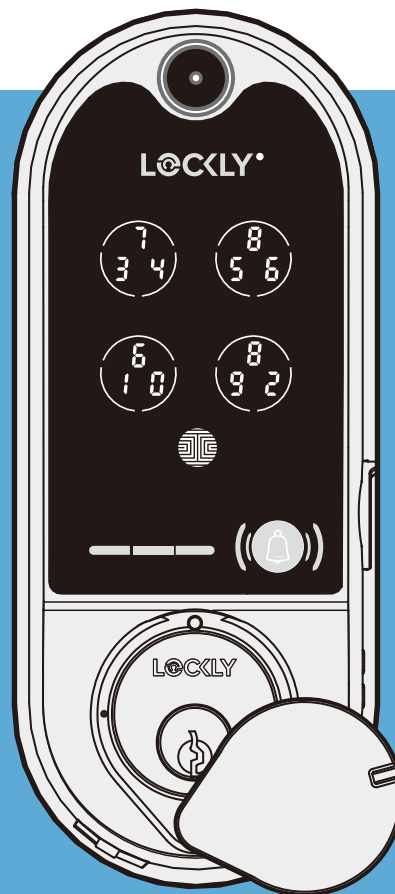


# LOCKLY VISION

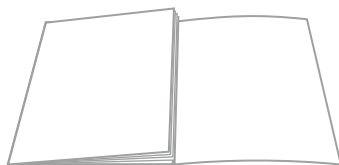
## INSTALLATION GUIDE

### DEADBOLT EDITION



# Welcome!

This guide will walk you through step-by-step how to install and get your Lockly Vision™ up and running. Installation generally takes less than 30 minutes. If you have any questions please reference our online support at: [Lockly.com/support](https://lockly.com/support) or call (669) 500-8835 for help.



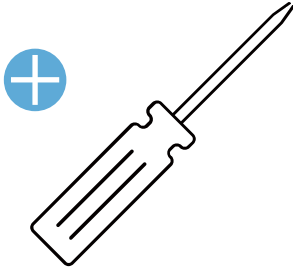
Reference installation parts overview foldout on back page

# What You'll Need

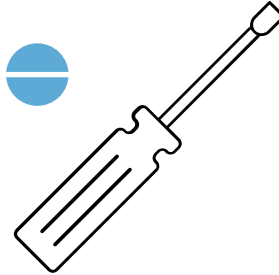
---

## Tools

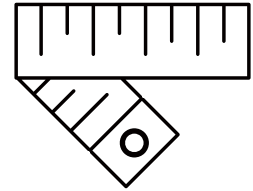
Phillips-Head Screwdriver



Flathead Screwdriver

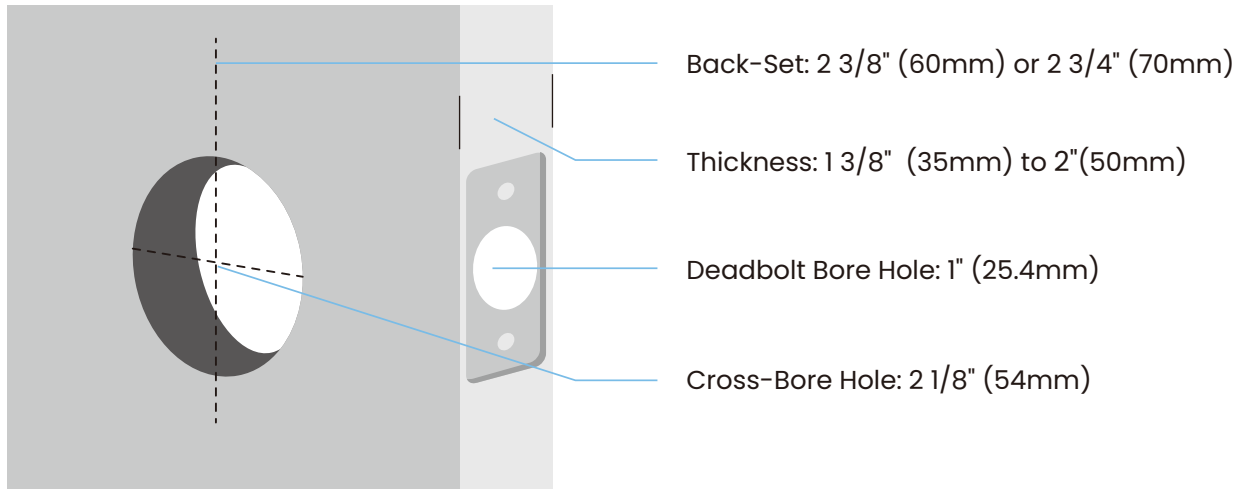


Tape Measure or Ruler



## Prepare Door

Confirm existing door or use provided template to bore new holes.

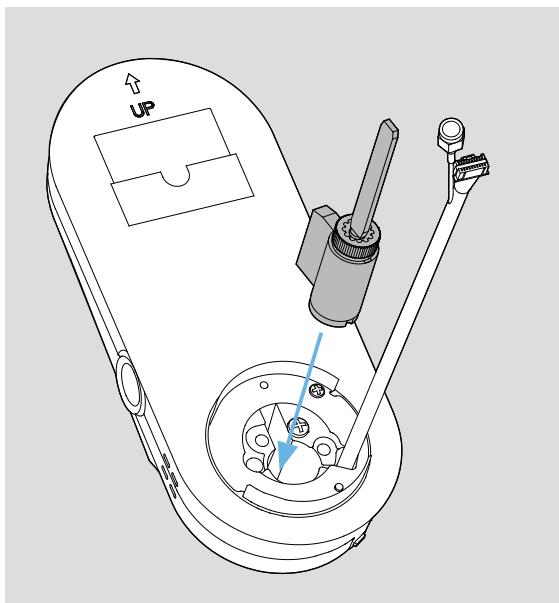


# Step 1

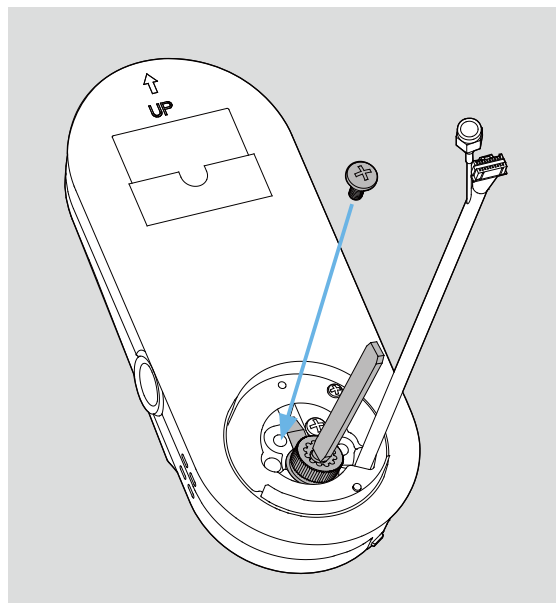
## LOCK CYLINDER INSTALLATION (OPTIONAL)

Before installing the smart lock, follow the below steps on this page to complete the installation of the lock cylinder.

**If your lock already comes with the lock cylinder installed, you can skip this step.**



Insert the lock cylinder into the cylinder hole of the exterior assembly.



Tighten the cylinder screw clockwise with a screwdriver.

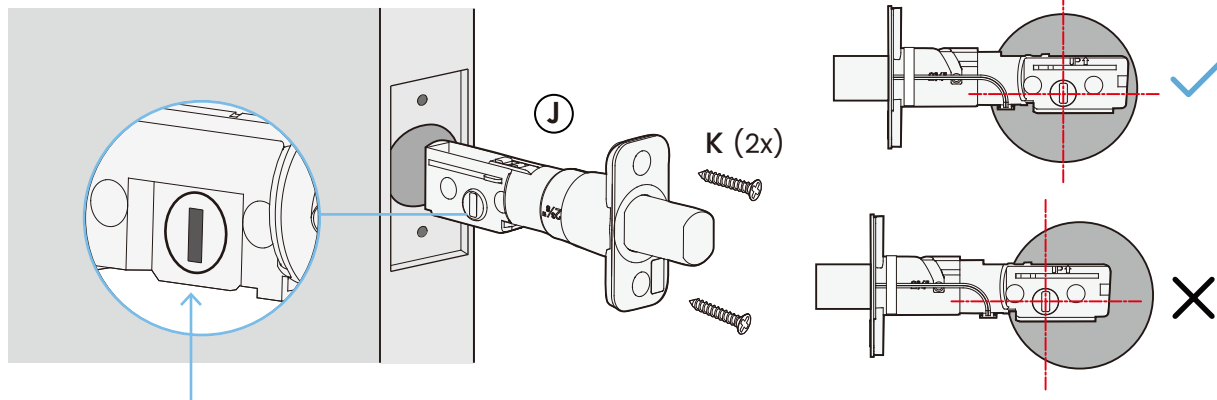


If you use a power tool to tighten the screws, set it to the lowest speed. Before you start, line the screw up straight with the threads to avoid cross-threading and damaging the screw hole.

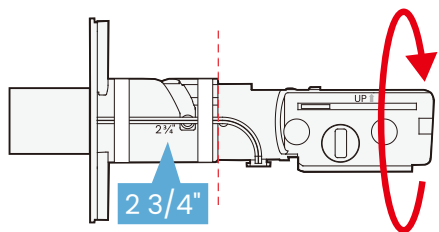
## Step 2

### ADJUST DEADBOLT AND INSTALL

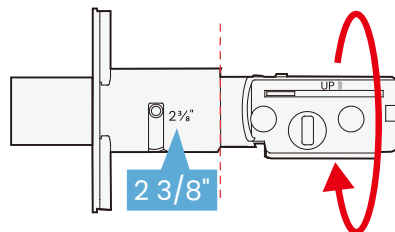
Ensure deadbolt blade slot aligns center in the door hole.



The deadbolt comes set to  $2\frac{3}{4}$ " (70mm), adjust to  $2\frac{3}{8}$ " (60mm) if needed.  
(Wear gloves to protect from possible pinching)



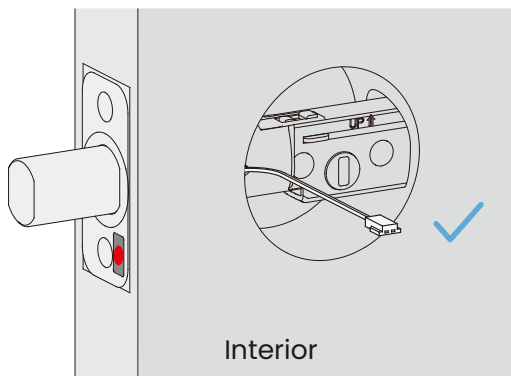
To adjust hold the faceplate and twist the body clockwise until it snaps to  $2\frac{3}{8}$ " (60mm).



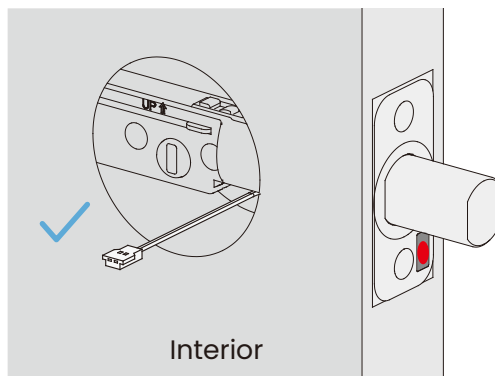
To adjust hold the faceplate and twist the body counter-clockwise until it snaps to  $2\frac{3}{4}$ " (70mm).

Make sure the sensor wire exits on the interior side of the door.

Left Swing Door



Right Swing Door

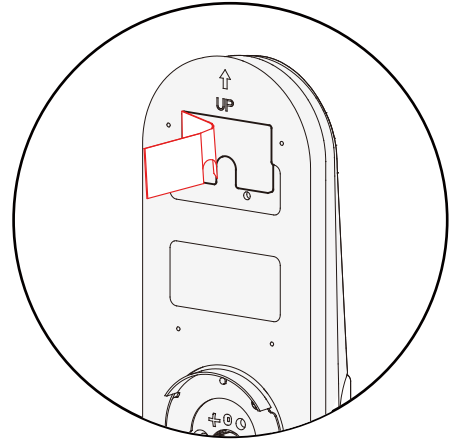


To avoid damaging the built-in sensor, do not use tools or hard objects to hammer or force the deadbolt into place.

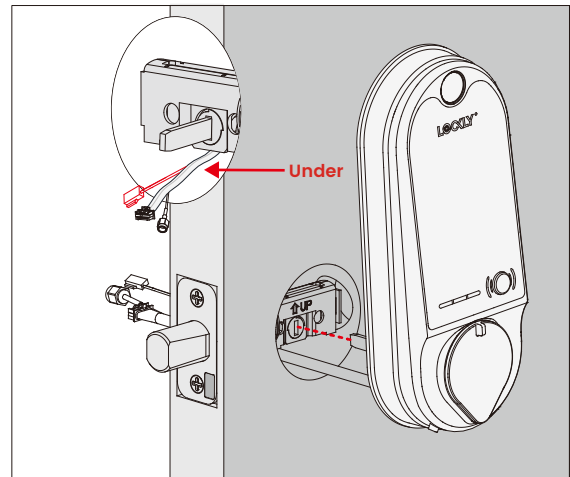
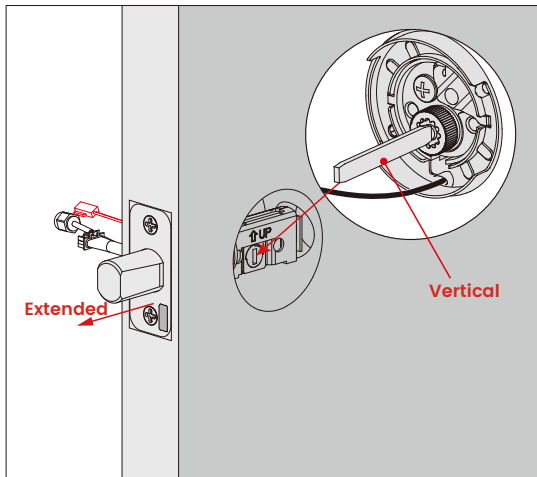
# Step 3

## INSTALLING EXTERIOR ASSEMBLY (B)

Check the exterior assembly **B** alignment to door hole and deadbolt before peeling off film on adhesive strips.

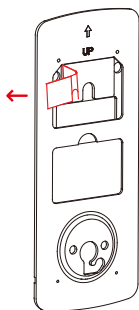


Peel film from adhesive strips and make sure torque blade is in the **vertical** position with the deadbolt **extended**. Place assembly and torque blade through the deadbolt slot and guide connection cables through the cross-bore hole under the deadbolt as shown. Complete mounting by aligning and securing until flush to exterior door surface.

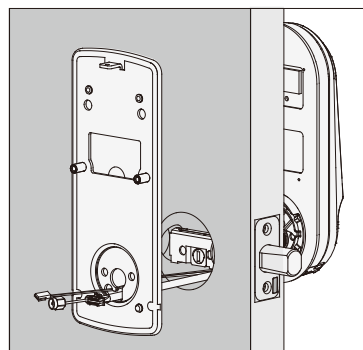


# Step 4

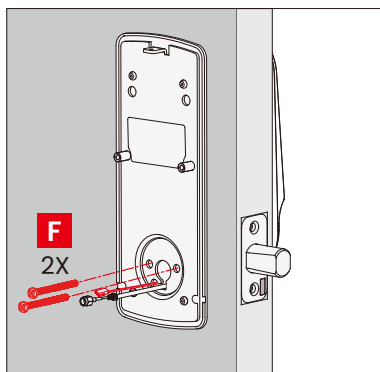
## INSTALLING INTERIOR ASSEMBLY (G)



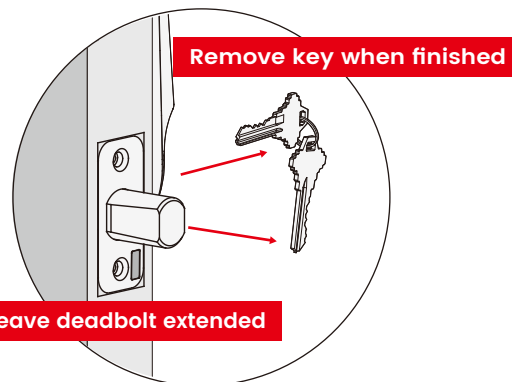
**1:** Check interior mounting plate **D** alignment to your door hole before securing with adhesive strips.



**2:** Align and secure mounting plate with adhesive strips. Guide connection cables through the hole and secure to the lower left notched hole.



**3:** Insert and tighten by hand 2 **F** screws located on the left and right of the blade. Check alignment and tighten with screwdriver until mounting plate is securely placed on door.



**4:** Use the key to ensure deadbolt locks and unlocks smoothly (no binding or rubbing). **IMPORTANT:** when finished, leave the deadbolt extended and remove the key before proceeding to the next step.



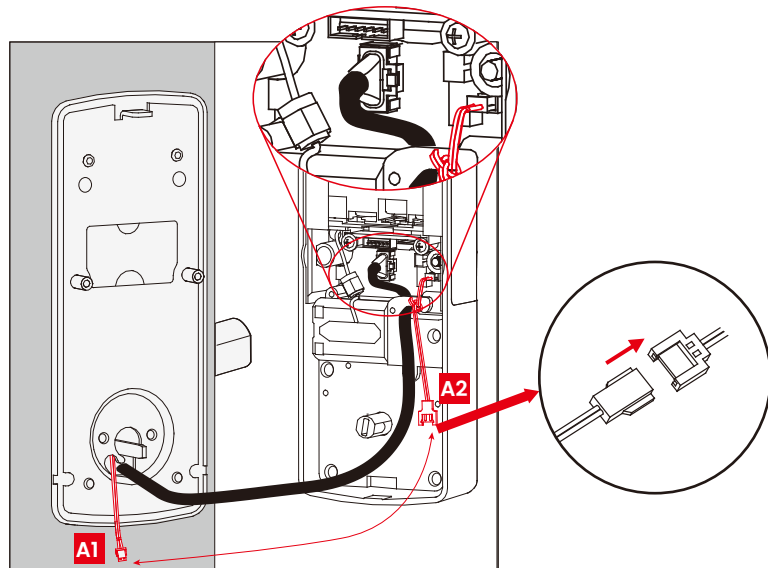
when installing screws by hand, turn screws clockwise several turns then counterclockwise one turn to ensure smooth threading and no cross threading.



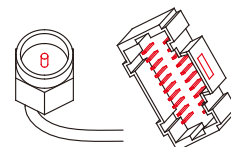
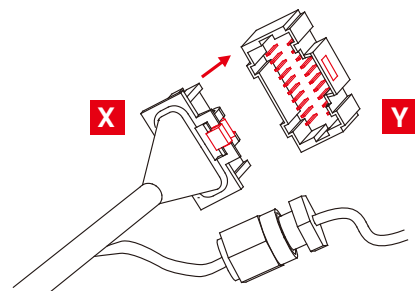
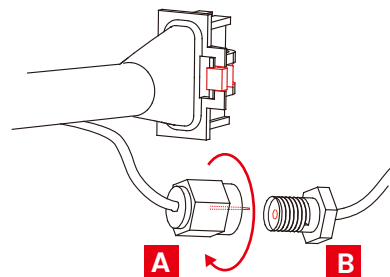
# Step 4 continued

## INSTALLING INTERIOR ASSEMBLY (G)

**5:** Plug the larger cable coming through mounting plate **D** into the interior assembly **G** as shown. Tuck cable under eyelet hooks and route to the right on interior assembly **G**.



Connect **A** to **B** screw tightly by hand as shown. Plug **X** into **Y**, match red side of plug with red on socket - insert tightly.



Do not touch pins inside\*

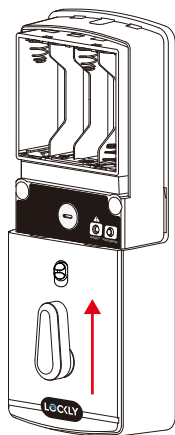
Install Cable	Remove Cable

If you need to disconnect this cable, use a screwdriver to hold down the tab (marked red) before carefully unplugging. DO NOT FORCE as this may result in damaging the lock.

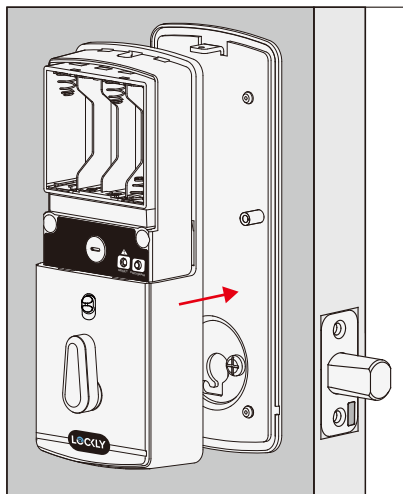
## Step 4 continued

## INSTALLING INTERIOR ASSEMBLY (G)

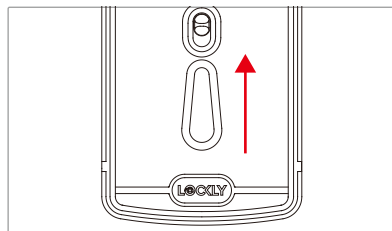
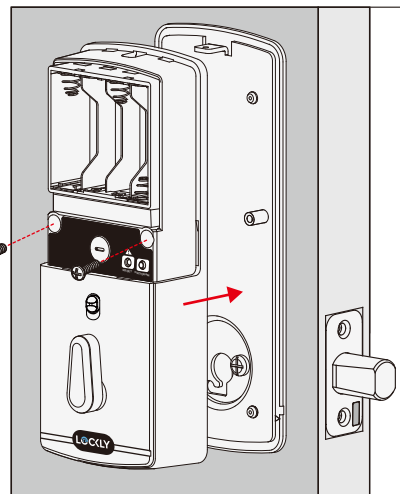
**6:** Before placing the interior assembly onto the mounting plate, ensure the thumb turn is **vertical**.



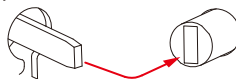
**7:** Place the interior assembly against the mounting plate and make sure the torque blade is inserted to the thumb turn shaft.



**8:** Secure the interior assembly to mount plate door with 2 **H** screws.



Torque Blade    Thumb turn shaft



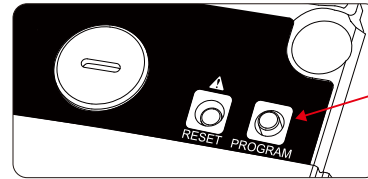
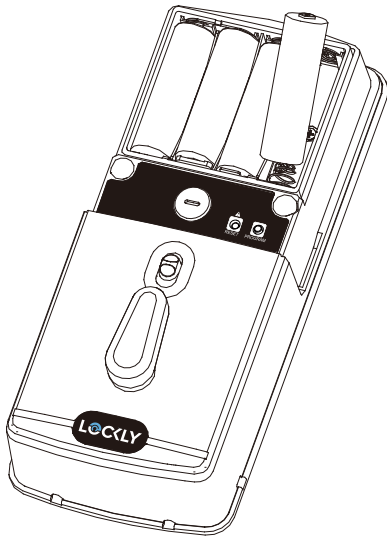
Align torque blade with thumb turn shaft, **make sure both are in the vertical position.**



**H** 2X

# Step 5

## INSTALLING BATTERIES



PRESS & HOLD

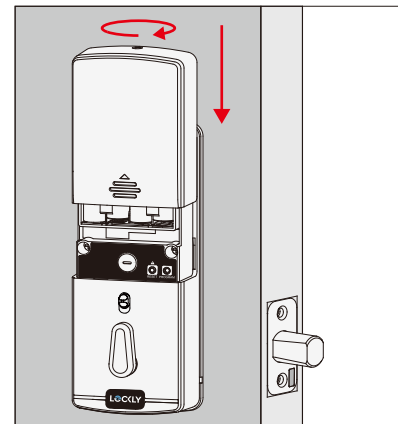
1: With door open and deadbolt fully extended, place ribbon inside compartment and insert 8 batteries (note correct -/+ polarity).

2: After all batteries are installed, PRESS and HOLD the **program button** for 10S. The lock will automatically start self-check (release program button once check starts). The self-check process determines right or left swinging door and is very important to ensure correct installation. **IMPORTANT:** if lock is not properly installed it will open and close repeatedly.

3: Once self-check completes ensure the lock operates smoothly by manually locking and unlocking the door using the thumb turn on the interior assembly. The deadbolt should operate smoothly without any interference or binding. If necessary, repeat step 2 and ensure that (a) the deadbolt was extended and (b) the torque blade was inserted vertically while the deadbolt was extended.

4: Swipe your hand across touchscreen. The lock should close (lock). If the touchscreen is ON, touch the lock should lock as well. If deadbolt bounces back or unlocks automatically it means something is not installed correctly. Go back and repeat step 2, same as above.

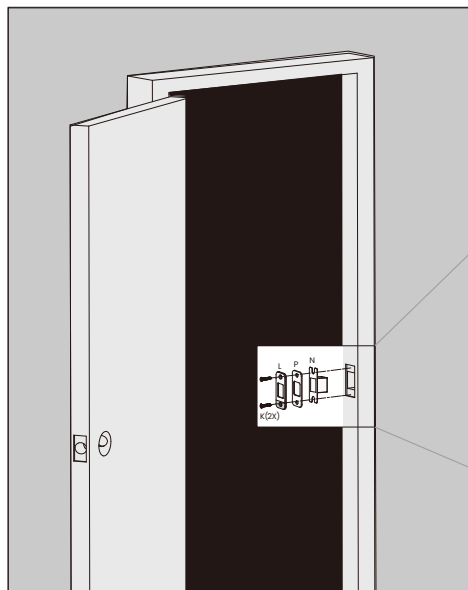
5: Once self-check is complete, install battery cover, secure with screw on top (do not over tighten).



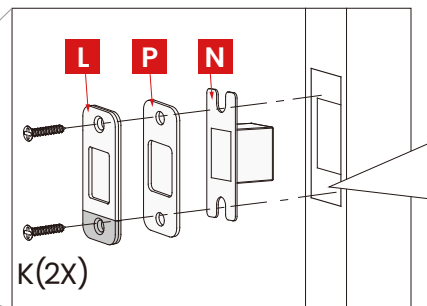
# Step 6

## INSTALLING STRIKE PLATE

Use the supplied door strike plate **L** which has the built-in door sensor magnet.



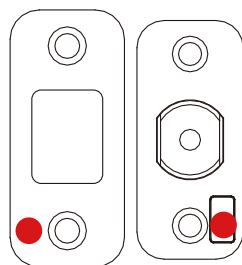
If your door gap is larger than 5mm, it is recommended to install Strike Spacer **P** to lessen the gap to ensure the normal operation of the door sensor.



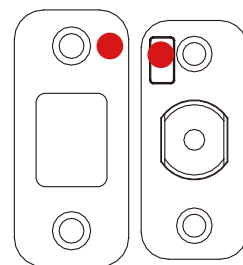
**USE THE INCLUDED DOOR STRIKE PLATE WITH INTEGRATED DOOR SENSOR.**

Depending on your door and door frame gap you may need to increase the depth of the groove or use strike spacer to lessen the gap.

When installing the deadbolt and door strike, make sure the two red marks are aligned.



side view (70mm)



side view (60mm)

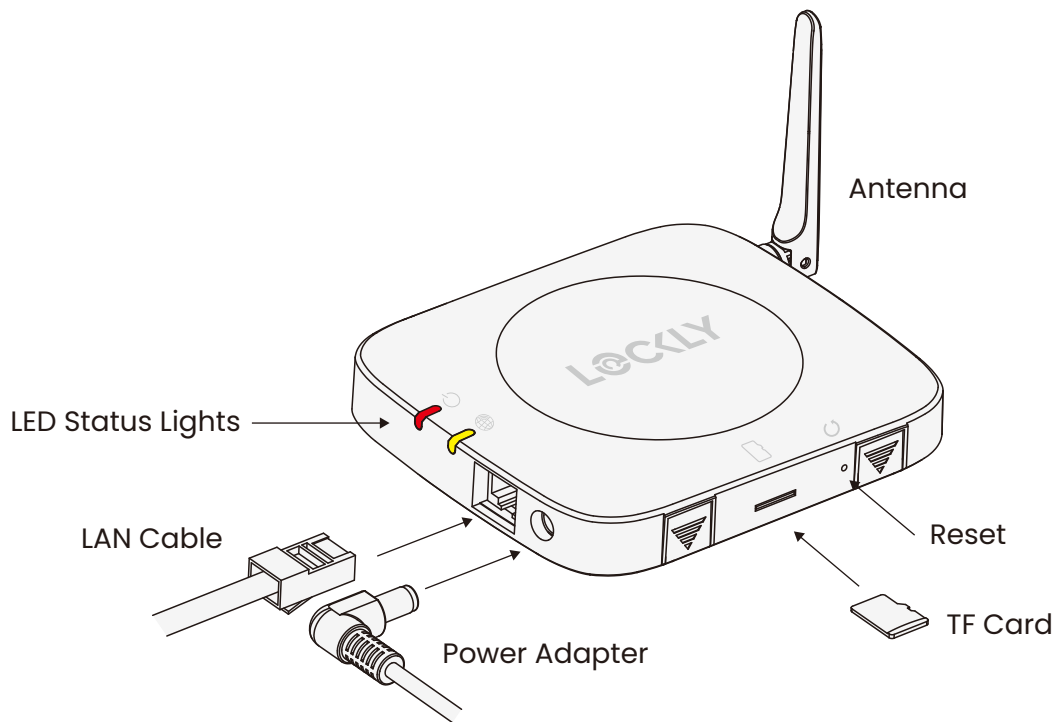


Due to variations in door and frame designs, you may need to adjust the strike plate to ensure smooth deadbolt operation. This is crucial. If the deadbolt binds or catches, the lock will beep rapidly, indicating it cannot close due to misalignment or excessive rubbing. If you have any questions please reference our online support at: [Lockly.com/support](https://lockly.com/support) or call (669) 500-8835 for help.

## Step 7

### PAIRING VISION CONNECT WITH LOCK

To enable video doorbell, live monitoring and voice control with Amazon Alexa or Google Assistant-enabled devices, you will need to setup the included Vision Connect Wi-Fi hub and pair it with the Lockly Vision™ deadbolt smart lock + video doorbell.



Vision Connect stores recorded video on the included TF card. Although the TF card is discrete, it is recommended to locate it in a discrete or secure area to protect your privacy and video recordings. TF Card is already inserted on the hub when shipped.

Before connecting Vision Connect Hub download the Lockly Home App on your smartphone. It's required to finish setup and to set (pair) the connection between hub and lock.



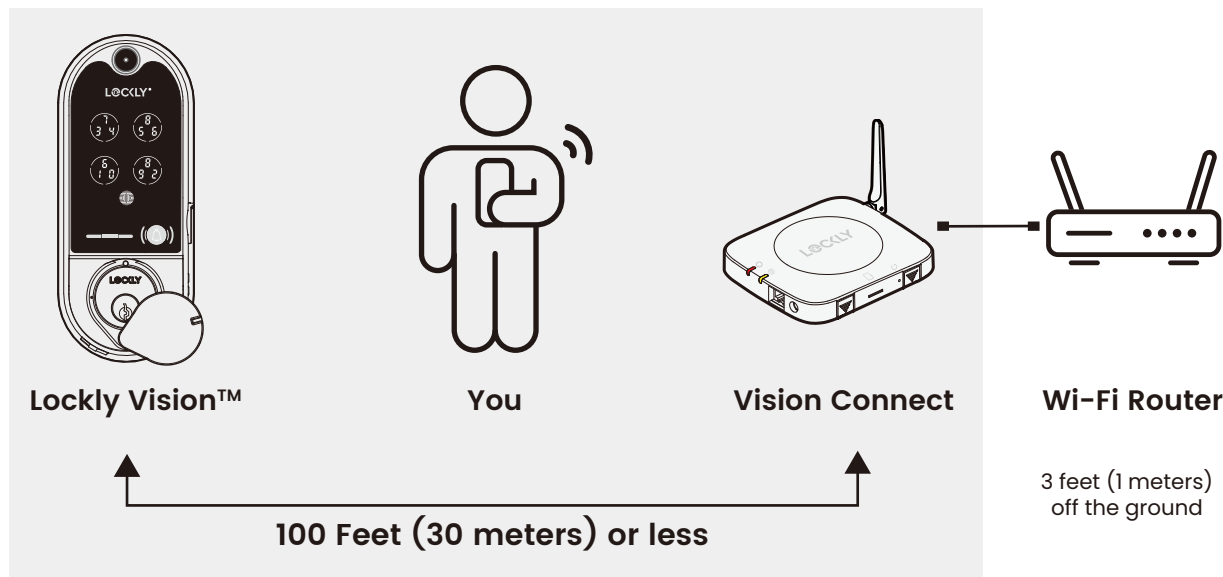
Scan or visit [Lockly.com/app](https://Lockly.com/app)

Additionally, you'll need the Activation Card with unique pre-paired QR code to your lock. The card is located in the packaging that your lock came in. This QR code can also be found at the bottom of Vision Connect Hub. Please keep it in a safe place—this QR code is required to complete the setup and will be required if you lose your smartphone or access code.



Without the QR code you will not be able to reset your lock.

The Vision Connect Hub connects directly to your Wi-Fi router using the provided LAN cable. Choose an appropriate location for the hub for optimum performance (see below). For optimum connectivity, it is recommended that the hub be no further away from the lock than 100 feet, placed 3 feet (1 meter) off the ground.



During the setup process position yourself between the lock and the Vision Connect hub—ideally no more than 100 feet (30 meters) apart. Ensure your iOS or Android™ device has both Bluetooth® and Wi-Fi enabled.

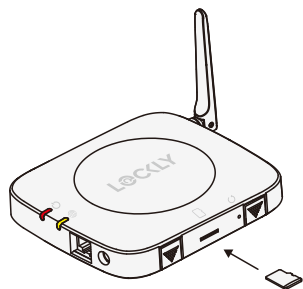


Sometimes distances between hub and lock can vary due to circumstances. If you are having difficulty setting up optimal range of 100/ft or less, we're here to help. Call our customer care team: (669) 500-8835, or visit [Lockly.com/help](https://www.lockly.com/help) for suggestions and troubleshooting tips.

# Step 8

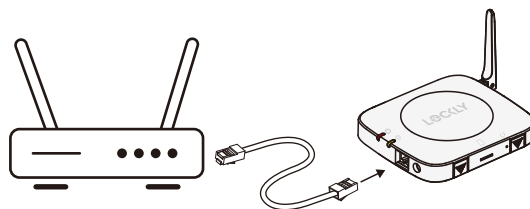
## VISION CONNECT HUB SETUP

Ensure the TF card that comes with Vision Connect is properly inserted.



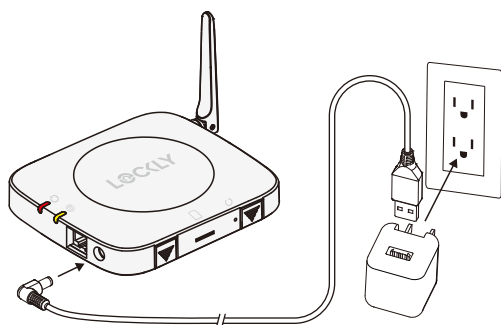
**TF Card (Included)**

Connect LAN cable to closest Wi-Fi router to the Lockly Vision™ lock (<100ft).

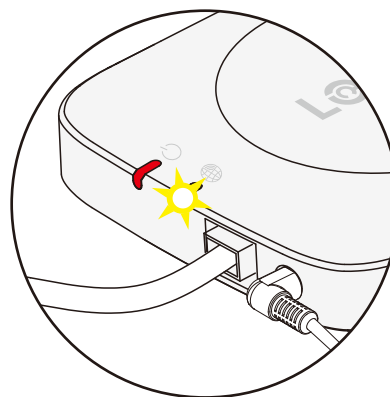


**LAN Cable (S) (Included)**

Connect power cable and plug USB power adapter into outlet.



Wait 2 minutes for hub to self calibrate. Once LEDs turn RED and blink yellow.

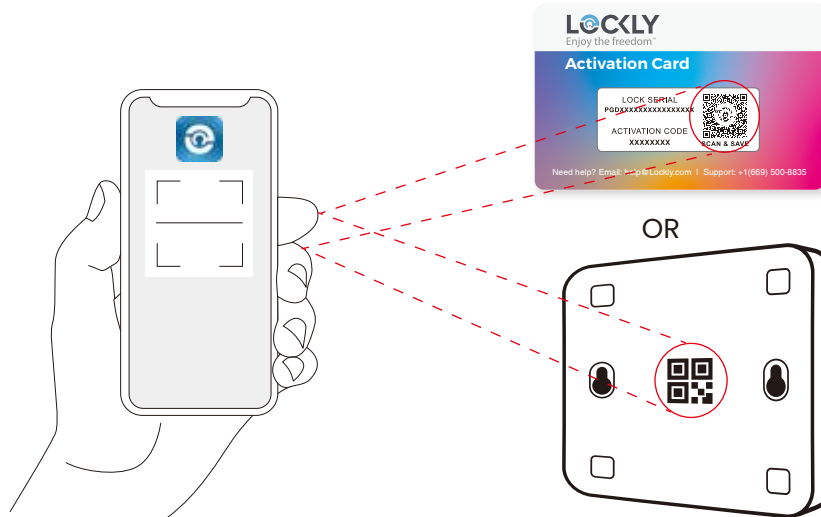


Vision Connect is now ready to connect to your iOS or Android™ device.

See troubleshooting on next page if LEDs do not meet the described conditions.



Launch the **Lockly Home App** and select "add a new device", then select Vision. You will be prompted to scan the QR code from the Activation Card or Vision Connect Hub (located at the bottom).




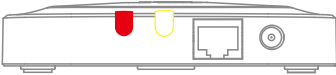






- Make sure your Lockly Vision™ Elite has the latest firmware. Allow updates and follow instructions if prompted. For more info, visit: <http://www.support.Lockly.com/faq/firmware-update/>
- Power interruption during firmware update may damage the Vision Connect hub. Do not interrupt or turn the power off while firmware update is in progress.



- Remember to register for warranty.
- Allow your mobile phone to receive push notifications.
- Send in-app feedback if you encounter any issues while using the App.
- If you are having difficulty scanning the QR code, we're here to help. Call our customer care team: (669) 500-8835, or visit [Lockly.com/help](http://Lockly.com/help) for suggestions and troubleshooting tips.

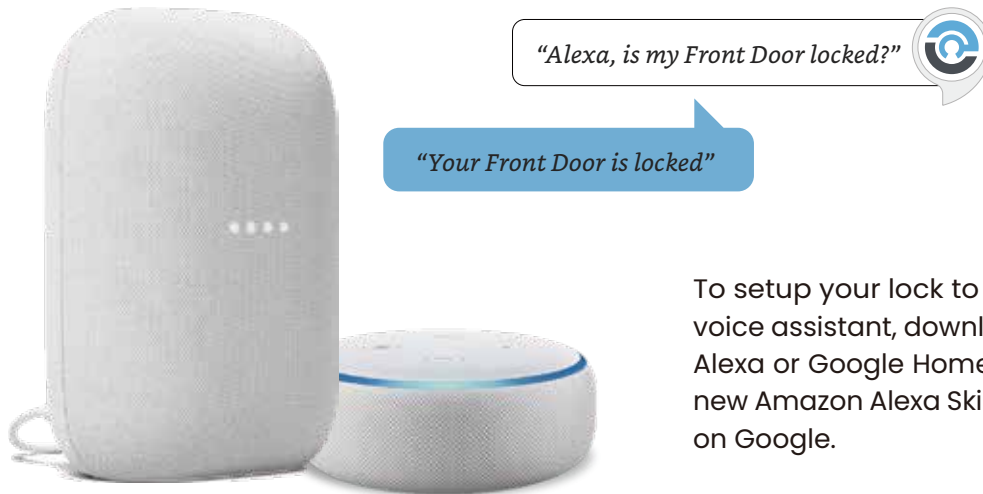
# VISION CONNECT STATUS & TROUBLESHOOTING

	LED INDICATORS	HUB	STATUS
During Setup	Solid red ON	After connecting LAN cable and power adapter, wait for 2mins for Vision Connect to self calibrate.	Power ON/ Successfully paired
	Yellow slow blinking	 READY TO CONNECT	Network connected
	If you experience any of the following, power down and disconnect hub, repeat connection process		
	Red slow blinking		Pairing / Network NOT yet connected
	Red fast blinking		Pairing unsuccessful
	Yellow OFF		Router or LAN cable issue NO network connection
During Firmware Update	Blinking red goes to blue, then turns OFF		Resetting
	Blue slow blinking		Update in progress*
	Blue ON		Update Successful
	Blinking from red to blue		Update has failed

\*Power interruption during firmware update may damage the Vision Connect hub.  
Do not interrupt or turn the power off while firmware update is in progress.

### Hands-Free Voice Control

Control and check your status using only your voice with Amazon Alexa or Google Assistant-enabled devices.



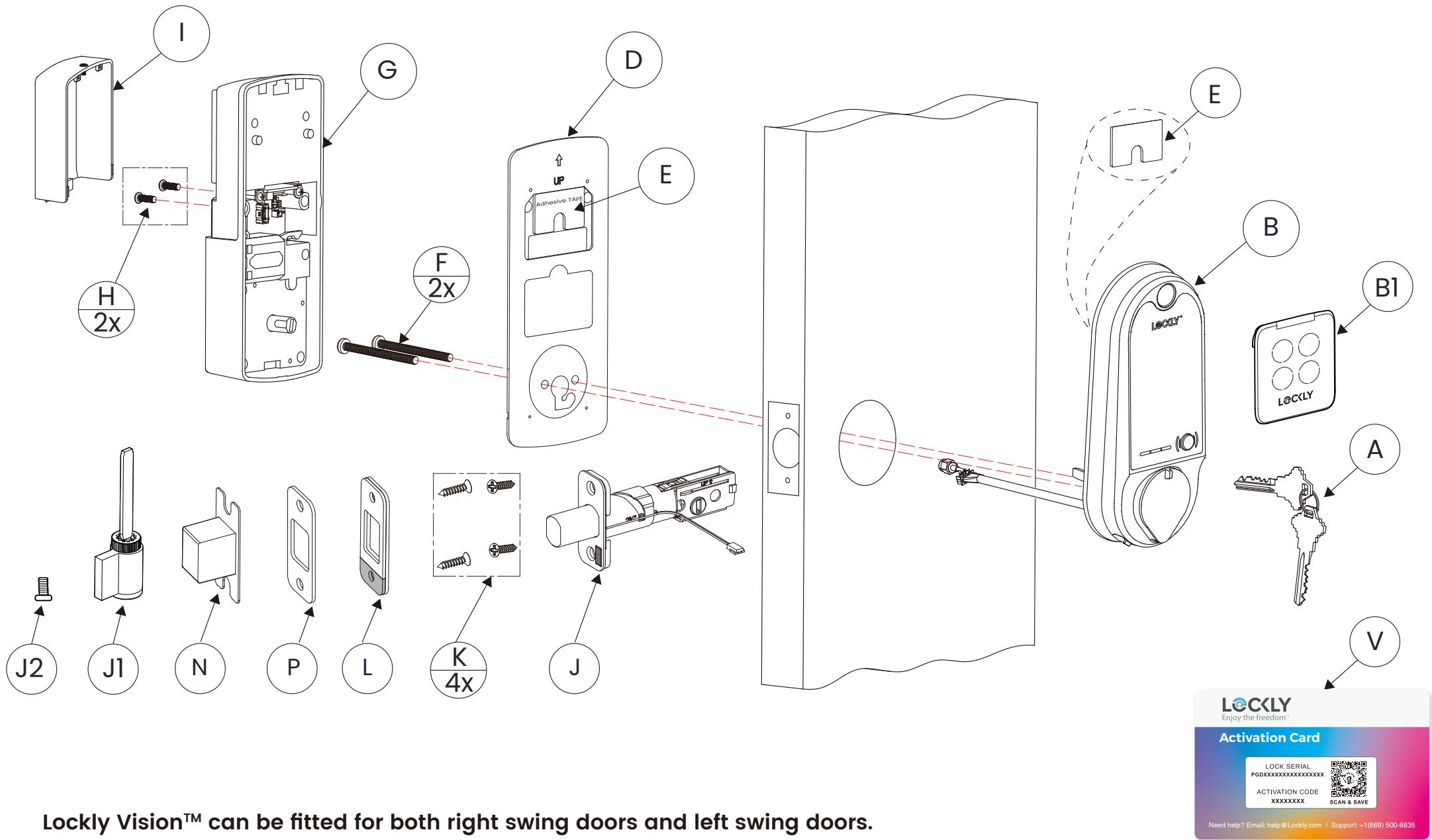
To setup your lock to work with either voice assistant, download the Amazon Alexa or Google Home App and add a new Amazon Alexa Skill or Lockly Action on Google.



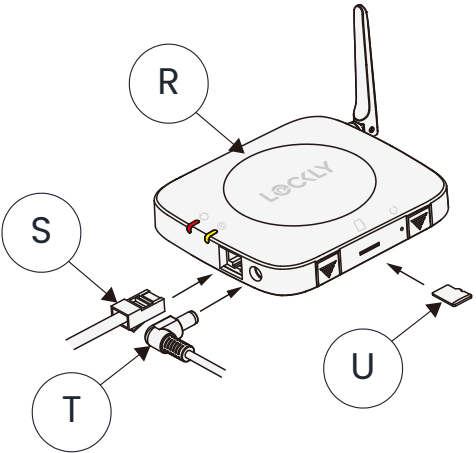
In Google Home or Amazon Alexa app, add Lockly skill for Alexa or Lockly Action on Google, then follow on screen instructions. See full list of commands, help videos, or troubleshooting your Lockly at <https://Lockly.com/help>

Google, Android, Google Play and Google Home are trademarks of Google LLC.

# INSTALLATION OVERVIEW AND PARTS LIST



Parts	
A	Keys
B	Exterior Assembly
B1	Touchscreen Cover
D	Mounting Plate
E	Adhesive
F	PM5×60mm Screw
G	Interior Assembly
H	PM4×12mm Screw
I	Battery Cover
J	Deadbolt
J1	Lock Cylinder
J2	BM3 x 6mm Screw
K	KA4×20mm Screw
L	Strike Plate
N	Dust Box
R	Vision Connect Hub
S	LAN Cable
T	Power Plug
U	TF Card
V	Activation Card
P	Strike Spacer



Lockly Vision™ can be fitted for both right swing doors and left swing doors.



Go to [Lockly.com/installation](https://lockly.com/installation) download the latest version of this installation guide.

OR

Scan the code on your phone to watch step-by-step installation video.





For the latest version of this manual, please visit the following link:  
<https://www.support.lockly.com>



**We're Here to Help!**  
Email: [help@Lockly.com](mailto:help@Lockly.com)

© Copyright 2024 Lockly All Rights Reserved

US Patent NO. US 9,881,146 B2 | US Patent NO. US 9,853,815 B2 | US Patent NO. US 9,875,350 B2 | US Patent NO. US 9,665,706 B2 | US Patent NO. US 11,010,463 B2 | AU Patent NO. 2013403169 | AU Patent NO. 2014391959 | AU Patent NO. 2016412123 | UK Patent NO. EP3059689B1 | UK Patent NO. EP3176722B1 | Other Patents Pending

The Bluetooth® word mark and logos are registered trademarks owned by the Bluetooth SIG, Inc. , and any use of such marks by Lockly is under license. Other trademarks and trade names are those of their respective owners. Google, Android, Google Play and Google Home are trademarks of Google LLC. , Amazon, Alexa and all related logos are trademarks of Amazon.com, Inc., or its affiliates.