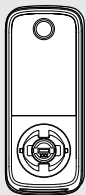


IMPORTANT:

Before installing the smart lock, follow the below steps on this page to complete the installation of the Exterior Door Handle Set.



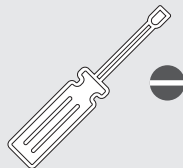
(B) Exterior Assembly



(B2) Door Handle Set



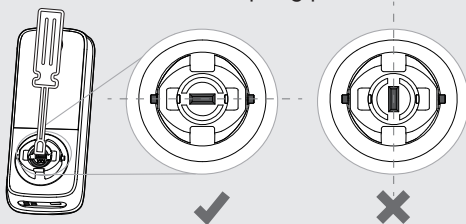
(A) Key



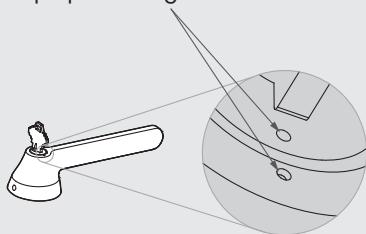
Flathead Screwdriver

Installation Instructions

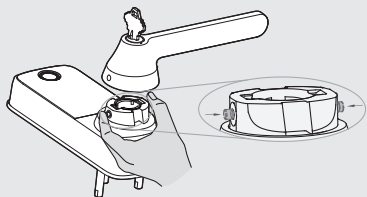
1. Use a flathead screwdriver to rotate the sleeve to a horizontal position, aligning the notches on both sides with the spring pin.



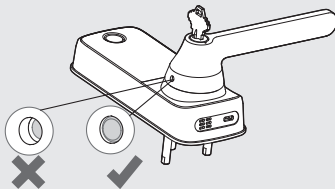
2. Insert key and rotate lock face so that the two pit points align as shown.



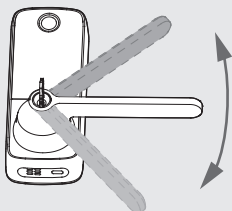
3. Using your fingers, press the two pins located on the left and right side of the lock to insert the handle back onto the lock.



4. After confirming that the installation is complete, check whether the pin is popped up. Adjust the handle accordingly to ensure that the pins are fully released.



5. Check that your handle moves smoothly by turning it up and down.



6. Rotate the key to horizontal and remove it.

