



HOME STUDY PROGRAM™



www.studentdeskims.org



WHAT'S INSIDE

www.studentdeskims.org

- Program Overview
- Family Support
- Curriculum
- Grading System
- Admissions
- Fees & Mode of Payment
- About Our School

“Now, what really makes a teacher is love for the human child; for it is love that transforms the social duty of the educator into the higher consciousness of a mission.”

~Dr Maria Montessori



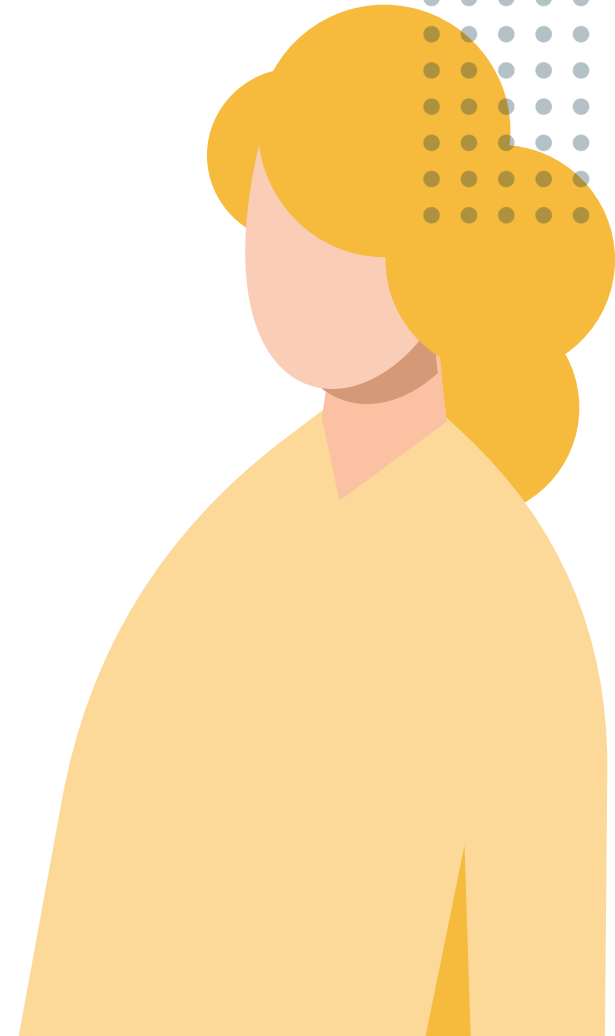
PROGRAM OVERVIEW

It is with joy that we welcome you to Studentdesk Integrated Montessori School (SD IMS) family.

As you embark on this **Home Study Journey**, it is important to us that we maintain a strong sense of **connectedness** throughout this process.

Our mission as your education partner is to work with your family in meeting the **holistic development** needs of your child. Together, let us raise the next generation's **leaders** and **nation builders**.

www.studentdeskims.org



PROGRAM OVERVIEW

ABOUT HOME STUDY PROGRAM

Home Study Program is an **alternative delivery mode of education** that provides learners with access to formal education while staying in an out-of-school environment. Authorized parents, guardians, or tutors take the place of the teachers as **learning facilitators**. This flexible learning option allows parents and guardians to maximize their involvement in their children's education as a matter of **parenting philosophy**.

EXPECTATIONS FOR STUDENTS

Students enrolled in Home Study Program are expected to **meet the learning standards** of the K to 12 Basic Education Curriculum.



PROGRAM OVERVIEW

EXPECTATIONS FOR PARENTS

It is the prime duty of the parents as learning facilitators to provide their children with adequate **guidance, support, resources,** and **experiences** that contribute to the holistic development of their children. The parents must also provide their children with a home environment conducive for learning.

THE UNINTERRUPTED WORK CYCLE

Establishing a **routine** that works for your family is an essential first step to creating a successful learning environment at home. This can help your child feel **secured, prepared,** and **comfortable** engaging with various learning opportunities at home.

THE PREPARED ENVIRONMENT

Parents are encouraged to follow Maria Montessori's philosophy of the **prepared environment**. Your home environment can be designed to facilitate maximum independent learning and exploration by the child. This **calm** and **well-ordered** environment has a lot of movement and activity. It offers a blend of **freedom** and **self-discipline** in a place especially designed to meet your child's developmental needs.



ADVANTAGES OF OUR PROGRAM

01

We will take care of your child's **DepEd registration** and assign your child a Learner Reference Number or LRN.



03

Cost saving as tuition fee is much lower and you can also save from transportation cost, school uniform, etc.



05

We **collaborate** with you in the **assessment** and **evaluation** of your child's learning and development



07

Order and accountability; encouraging you and your child to follow and meet specific targets & requirements.



02

We will provide **support** through guidance, parent education, and consultations with an academic adviser dedicated to your family.



04

Flexibility; you can study anywhere and schedule learning sessions anytime of the day that is most convenient for you and your child.



06

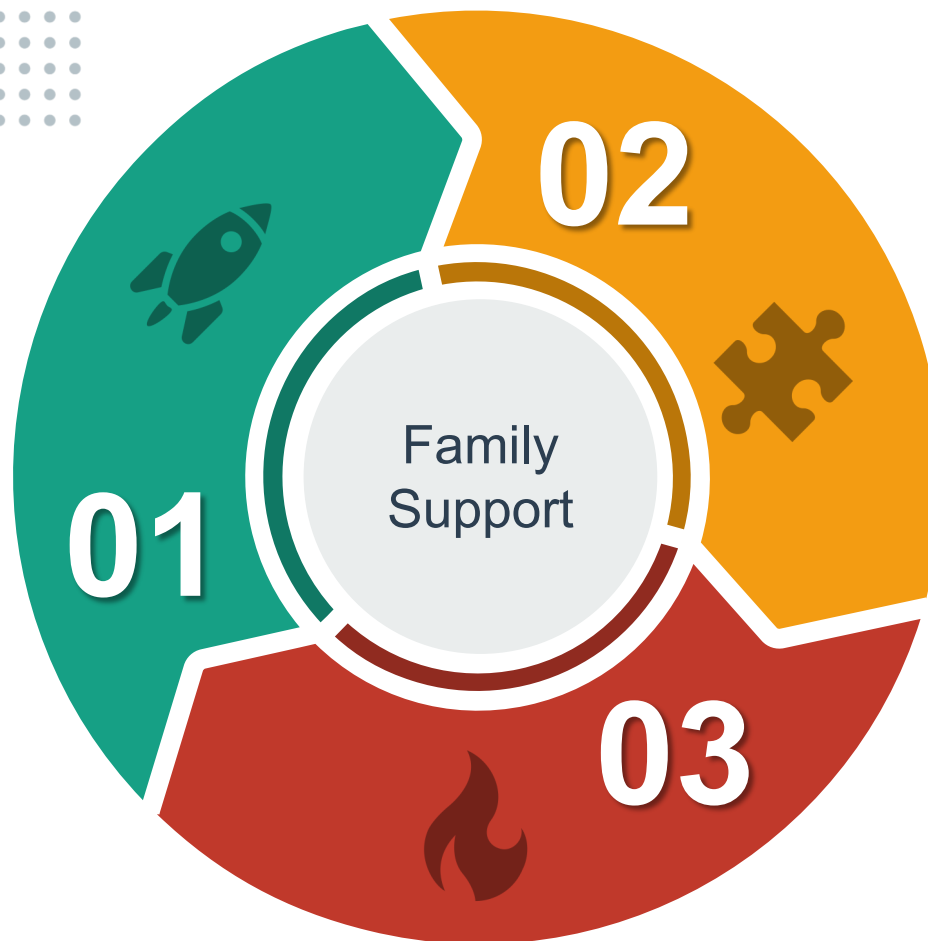
Freedom to choose the curriculum, resources, and activities that you find most beneficial to your child's learning & development



FAMILY SUPPORT

ORIENTATION

We have orientation program dedicated for all homeschooling parents prior to start of the school year.



WORKSHOPS

We have workshops aimed at improving parents' knowledge about parenting-related concerns and strengthen their ability to manage specific challenges they encounter at home.

CONSULTATIONS

Parents may also consult their academic adviser all throughout the academic year. We will also have an online support group for all homeschoolers enrolled in our school.

CURRICULUM

PROGRESSIVE APPROACH

We subscribe to the **balanced** or **progressive approach** to education as it allows us to give emphasis both on what the children learn (product) and how they learn (process).

DEVELOPMENTALLY APPROPRIATE

We strictly adhere to the **Developmentally Appropriate Practice** (DAP) in educating young children because we believe that children learn best when educational content and processes are age appropriate, individually appropriate and culturally appropriate.

OPEN CURRICULUM

Parents have the option to use our curriculum or use other curriculum that they prefer so long as it is **aligned with the K-12 competencies** set by DepEd.



LEARNING AREAS (PRE-K OR PRESCHOOL)

Language



Reading



Writing



Science



Mathematics



Practical Life



Music



Arts



P.E.



LEARNING AREAS (KINDER TO GRADE 6)

English



Mathematics



Science



Filipino



Social Studies



Writing



Values Education



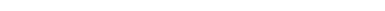
Music



Arts



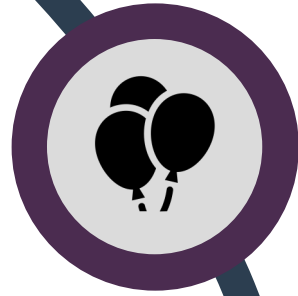
P.E.



Other subjects are added depending on the child's grade level such as TLE, Computer, etc.



ACTIVITIES



SCHOOL EVENTS

Your child may join our school events such as Nutrition Month, Buwan ng Wika, Family Day, United Nations Day, Field Trip, etc.



ENRICHMENT CLASSES

We also have various enrichment classes that your child can enroll in such as ballet class, karate aikido class, coding class, etc.



SCHOOL CONTESTS

Your child may also join in our school contests. Fees may apply for contest that requires registration fee.



TUTORIALS

If you need a tutor to assist you in teaching your child, we have tutorial programs that you may avail.



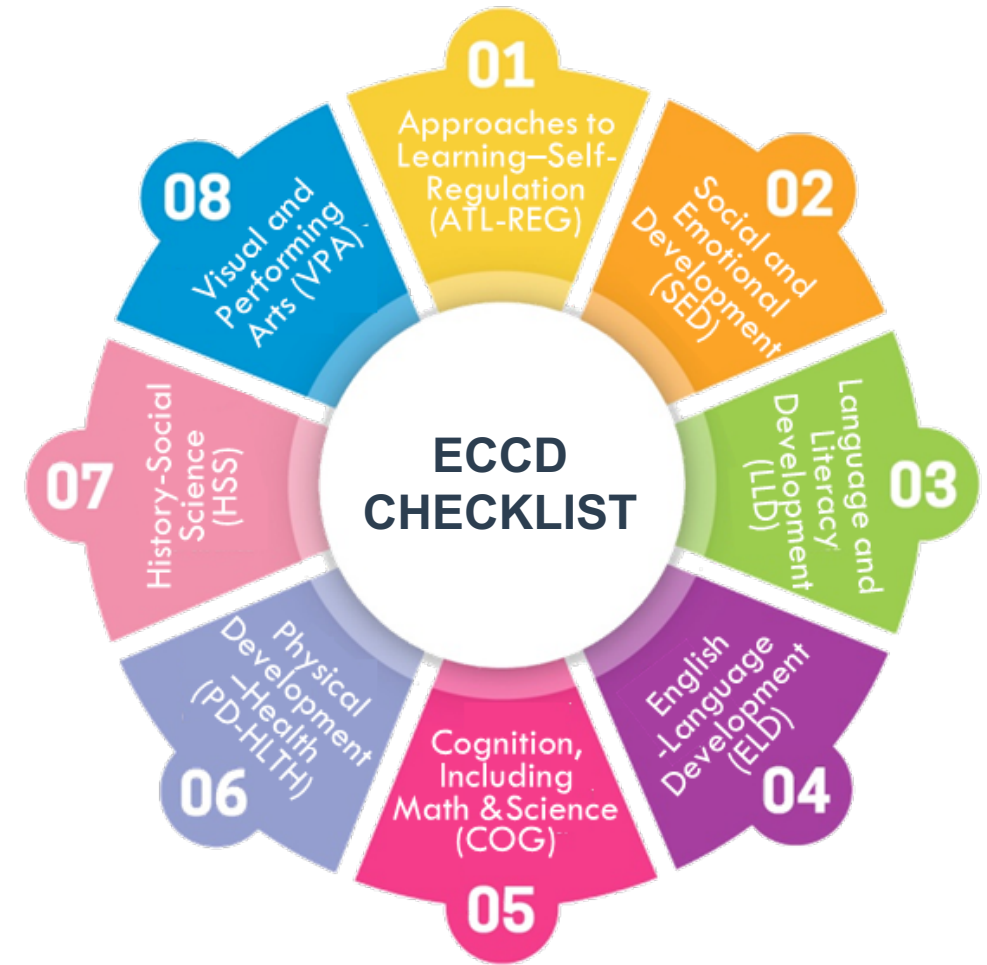
ASSESSMENT (PRESCHOOL)

ECCD CHECKLIST

For preschoolers (including Kinder), the parents will accomplish the ECCD checklist and submit to school semi-annually. The checklist aims to assess children in all areas of development as shown in the right photo.

STUDENT PORTFOLIO

Activities done by the child at home or in other places such as visits to farms, museums, galleries, etc. will be regularly uploaded by the parents to Google Site. This will serve as the child's online portfolio.





GRADING SYSTEM (KINDER – GRADE 6)

DEPED GUIDELINES

We adhere to DepEd Order No. 8, s. 2015 when it comes to grading.

COLLABORATIVE APPROACH

The parent and the academic adviser will collaborate in the assessment and evaluation of child's learning and development, but the final grade will come from the parent.

FORMATIVE ASSESSMENT

Parents shall provide immediate feedback on the child's performance to improve and accelerate learning.

SUMMATIVE ASSESSMENT

For Kinder and Grade School students, grades are computed quarterly based on written quarterly tests and performance tasks. The academic adviser will prepare and send the quarterly tests. Parents will administer the quarterly tests and send the answers back to the adviser.

STUDENT PORTFOLIO

Activities done by the child at home or in other places such as visits to farms, museums, galleries, etc. will be regularly uploaded by the parents to Google Site. This will serve as the child's online portfolio.

ADMISSION GUIDELINES



We will accept enrollees for our Home Study Program until **July of the academic year**.
Our academic year usually starts in August and ends in April. Below is our enrollment procedure:

01

**Fill out
Application
Form**

02

**Attend
Family/Parent
Interview**

03

**Submit
Requirements
& Pay Fees**

04

**Receive
Enrollment
Confirmation**

The school reserves the right at any time to refuse, to admit, or to re-admit students under certain conditions as enrolment in SD IMS is a privilege. Admission of new students for all levels will be on a first-come, first-served basis and will depend on the availability of slots.



REQUIREMENTS

01

Application Form

Duly accomplished and signed application form.

02

Birth Certificate

PSA or NSO Birth Certificate (for Filipino student); Birth Certificate from the Office of the Civil Registry of the country of birth, translated into English, or Embassy Certification of birth details (for foreign student)

03

Photo

2" x 2" recent colored picture with white background (4 pcs.)

04

Credentials (if applicable)

Student's original copy of report card with LRN or PEPT result.



There will be additional requirements for transferee, returnee, children with special needs, and foreign students.

FEES AND MODE OF PAYMENT



Option A

P20,000

- If you pay in full and in cash.
- Includes Home Study Kit
- Books not yet included; you have the option to buy our books or use other books that you prefer.

Option B

P25,000

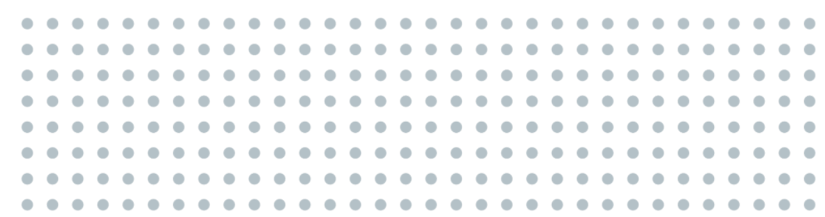
- If you pay in installment.
- Terms: 50% down payment upon enrollment; the balance is distributed in 2 installment terms due in November and February.
- Includes Home Study Kit
- Books not yet included; you have the option to buy our books or use other books that you prefer.

Registration Fee

P2,500 (non-refundable)

Miscellaneous Fee

Miscellaneous fees (e.g. books, Montessori materials, etc.) are not included in both Options A and B.



HOME STUDY KIT

Upon successful enrollment, we will provide you with an **official Studentdesk email account** which you will use to join our **Google Class** where you can access your Home Study Kit containing the following:

01

HANDBOOK

Everything you need to know about our program, principles, and policies.

02

SYLLABUS

List of all the topics / lessons to cover per subject and per quarter.

03

SCHOOL CALENDAR

Schedule of all school activities and events for the entire school year.

04

CLASS SCHEDULE

Sample class schedule and routines that you may follow at home.

05

LIST OF RESOURCES

List of free and paid teaching-learning resources that you may avail and use.

06

GRADING SYSTEM

Copy of DepEd Order No. 8, s. 2015 explaining the Grading System.

07

GRADING SHEET

Excel template where you will input your child's grade per task and per quarter.

08

REPORT CARD

Template where you will input your child's final grades per quarter.

09

ECCD CHECKLIST

Assessment tool for preschool & kinder to be done semi-annually.

10

ONLINE PORTFOLIO

Sample online portfolio and guidelines on how to make one for / with your child.

ABOUT OUR SCHOOL



Studentdesk Integrated Montessori School (SDIMS) is a non-profit organization operating under the supervision of the **Department of Education**. Inspired by the teachings of Maria Montessori, SD IMS is committed to helping children develop to their **fullest potential**. We believe that they are a gift from God and that it is our prime duty as educators to build their capacity to attain their **purpose in life**.



SDIMS envisions itself to be a leader in promoting lifelong learning here in the Philippines and the rest of the world.

To raise the next generation of leaders and nation builders through our holistic approach to global education.

The core values that drive our people and the way we operate are our genuine love for learning and passion for excellence.

CONNECT WITH Us

1 Mercedes Ave. cor C. Raymundo
Caniogan, Pasig City Philippines

Phone : +632 738 5985
Viber : +639 569 304 476



admissions@studentdeskims.org



fb.com/**studentdeskims**

www.studentdeskims.org