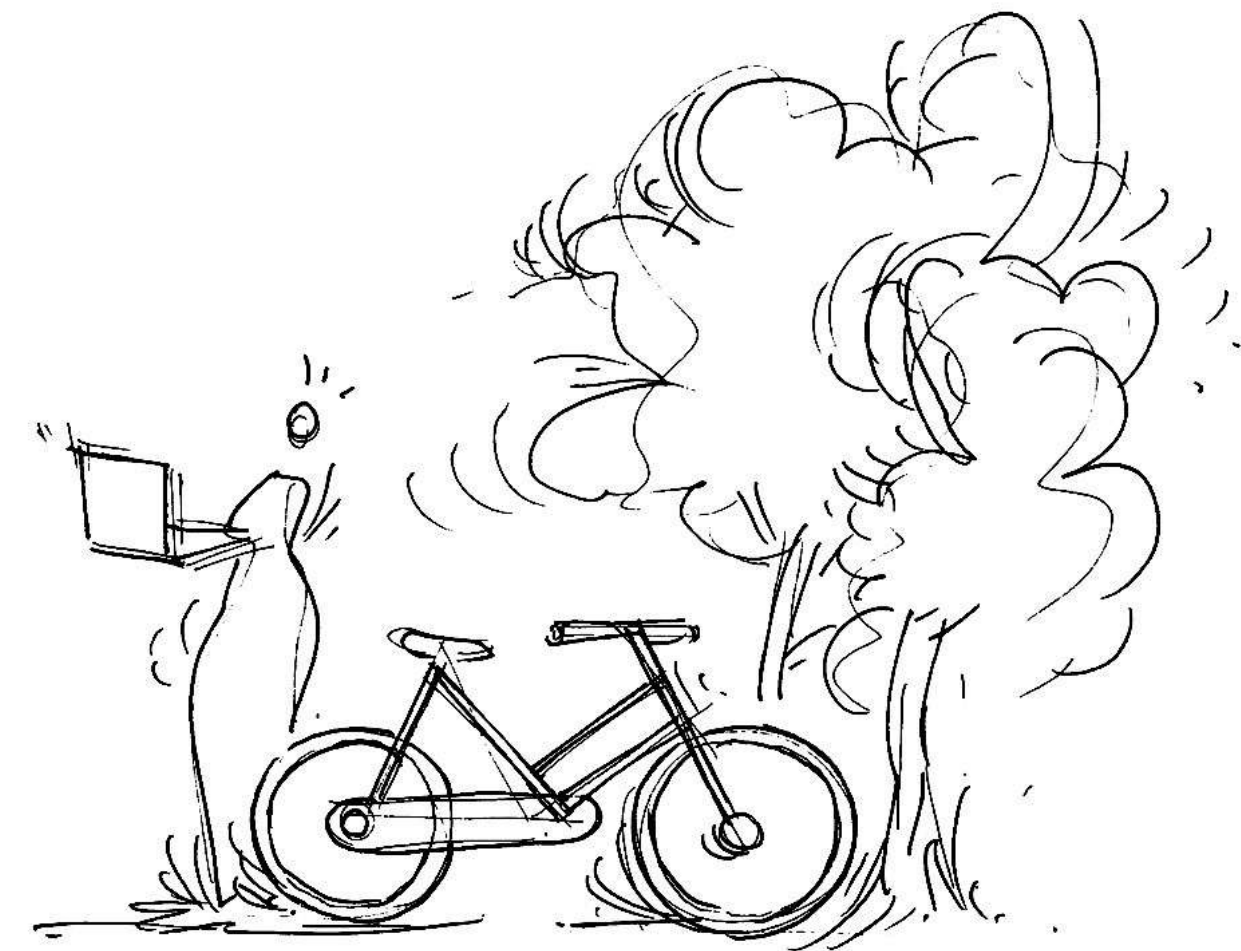


Cutwork

Studio Introduction

Together has Changed

We are an architecture and design studio
building new ways to live & work.



Paris
6 avenue René Coty
75014 Paris, FR

Amsterdam
Achter Oosteinde 2
1017 XP Amsterdam, NL

Billing / Registration
23 rue d'Anjou
75008 Paris, FR

Contact
hello@cutworkstudio.com
+33 7 49 18 89 36

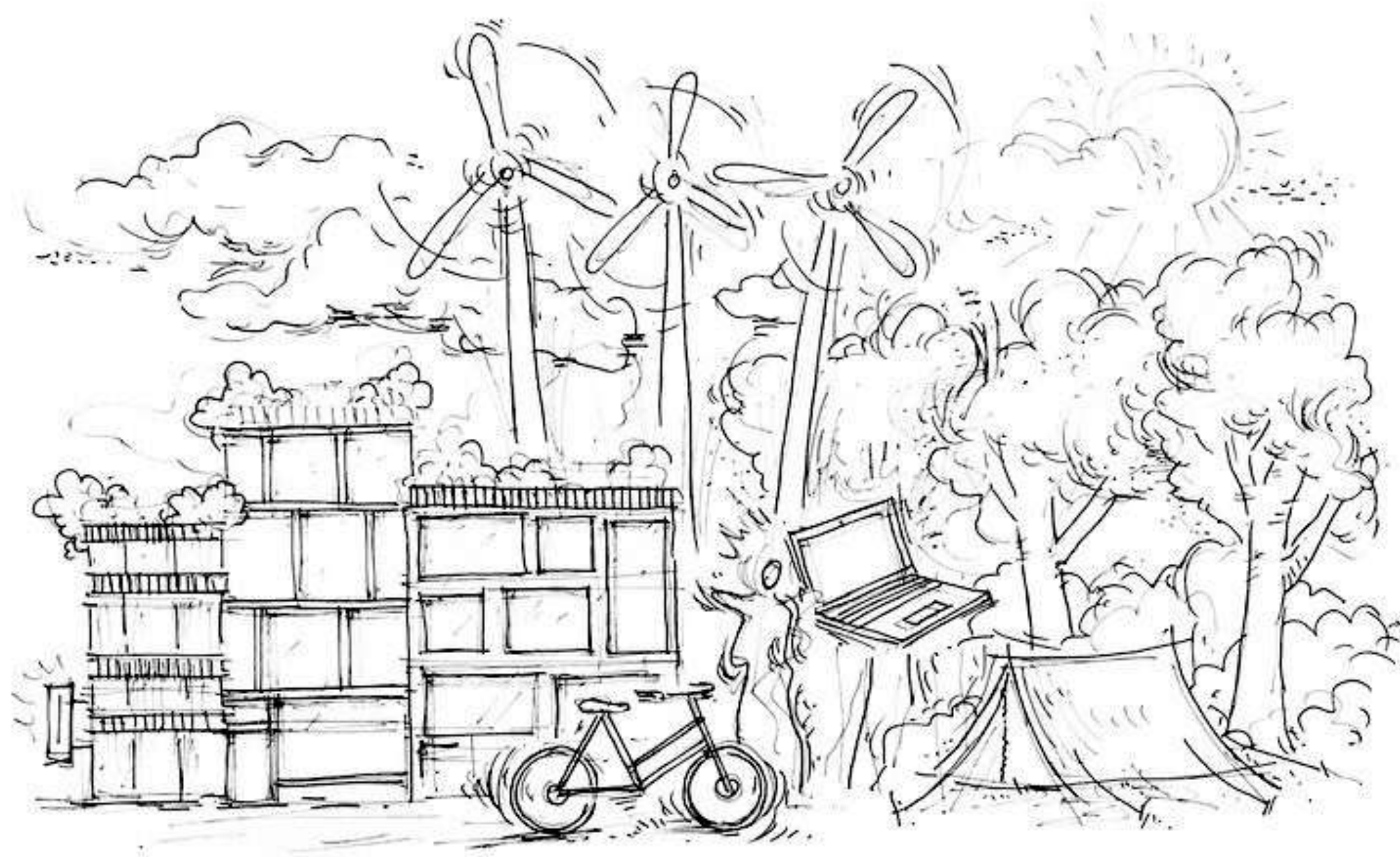
Web
cutworkstudio.com
instagram: @cutwork

Copyright 2022 ©

All rights reserved. This document and the ideas and content contained herein are the intellectual property of Cutwork. No part of this publication may be reproduced or stored in a retrieval system in any form or by any means without the prior written and signed permission from the copyright owner.

Hi / Hej / Hallo / Bonjour,
we're excited to discuss the
possibilities of collaborating
with you. Here is a PDF
intro of our studio to start
the conversation.

| | |
|-----------------------------|----------|
| → Introduction | 2 |
| <i>Portfolio Highlights</i> | 11 |
| <i>Service Range</i> | 26 |
| <i>Studio</i> | 51 |
| <i>Next Steps</i> | 59 |



Together has changed.

We founded Cutwork because the cities we live in were built for a world that no longer corresponds to the one we live in today.

We believe architects and designers need to shift perspectives on how to conceive and build space – to find new designs to support emerging lifestyles and communities of the 21st century.

If the challenge of the last century was to densify cities vertically, the challenge of today is to rethink our spaces to make them more elastic in their usages.

We are an architecture and design studio building new ways to live & work.



Architecture

The big challenge of today is to rethink buildings, expand their elasticity, and integrate them within our ecosystems.



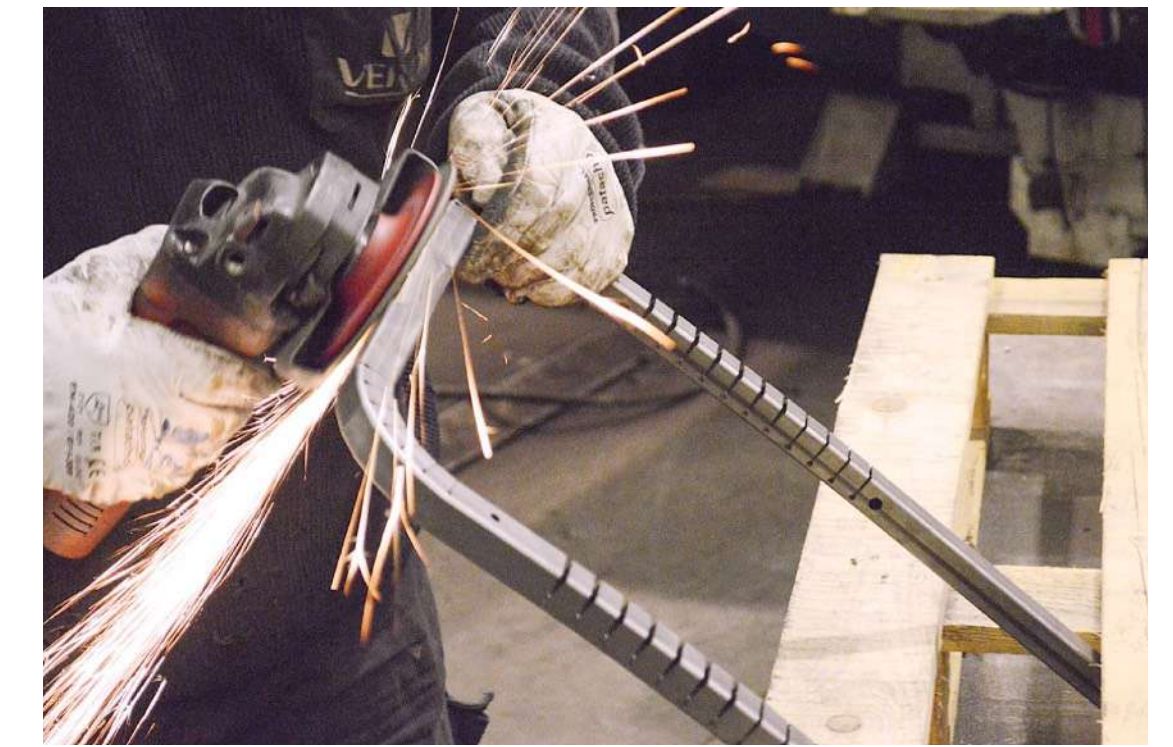
Interior

Our designs focus on emerging lifestyles and communities in shared spaces – coliving, coworking, cohabitation, etc.



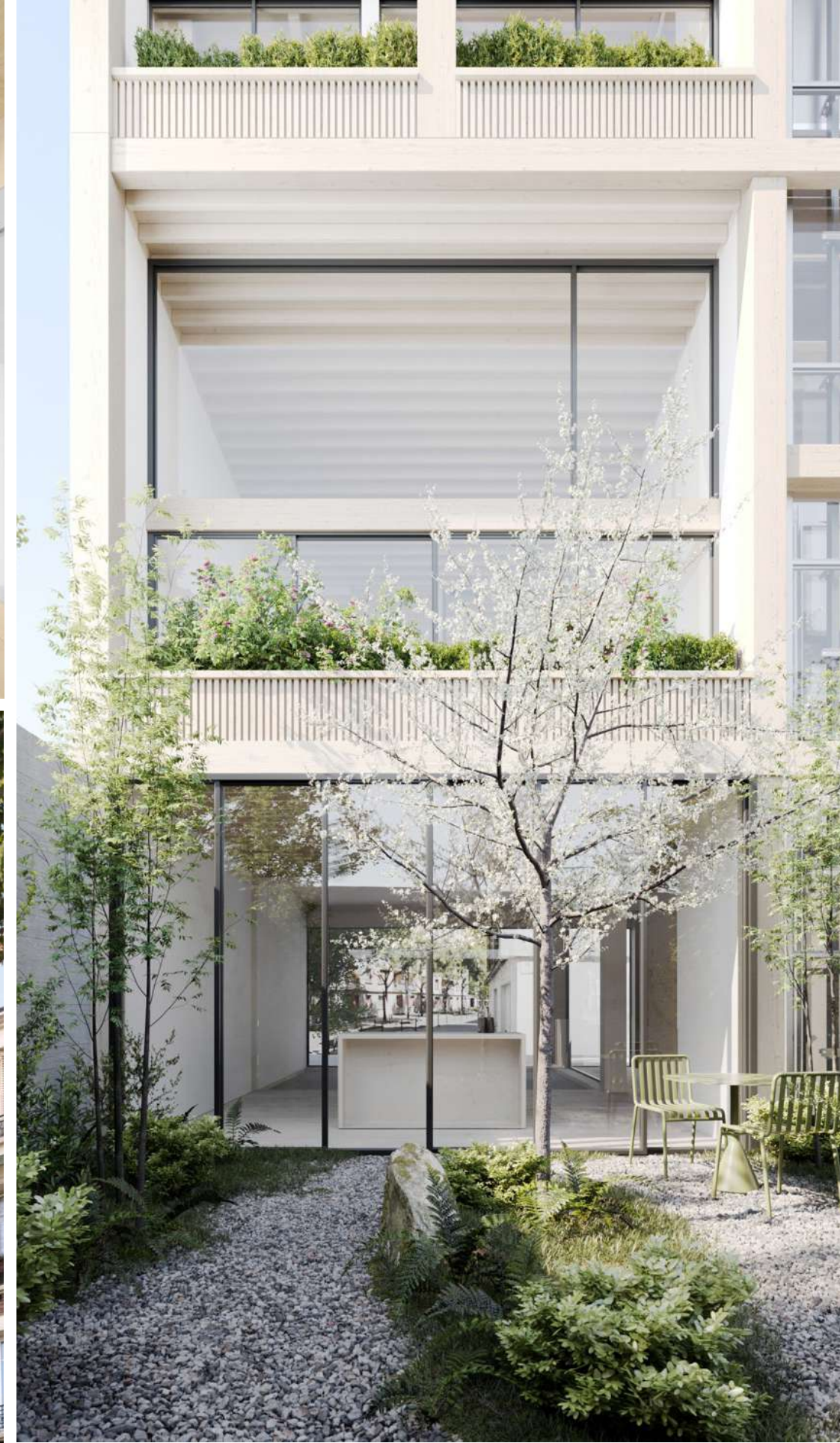
Furniture

We produce tailor-made furniture – thoughtfully designed for emerging ways to live and work, built to last.



Manufacturing

Our industrial technologies give us full control of our designs (prefab, kit-homes, furniture) from concept to production.





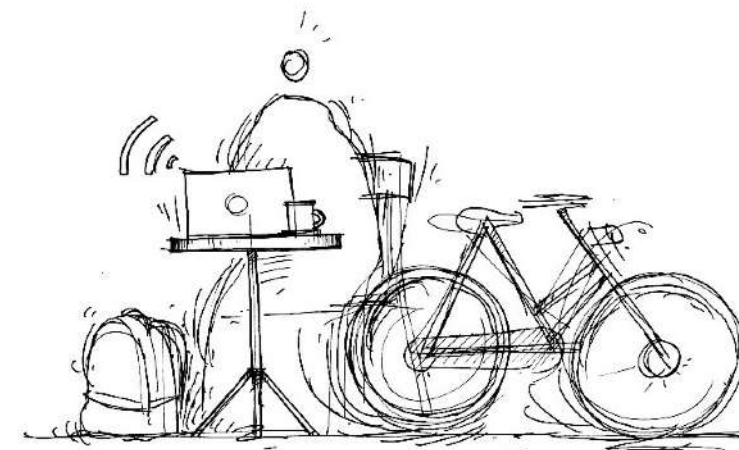


We founded Cutwork in response to x3 major shifts.



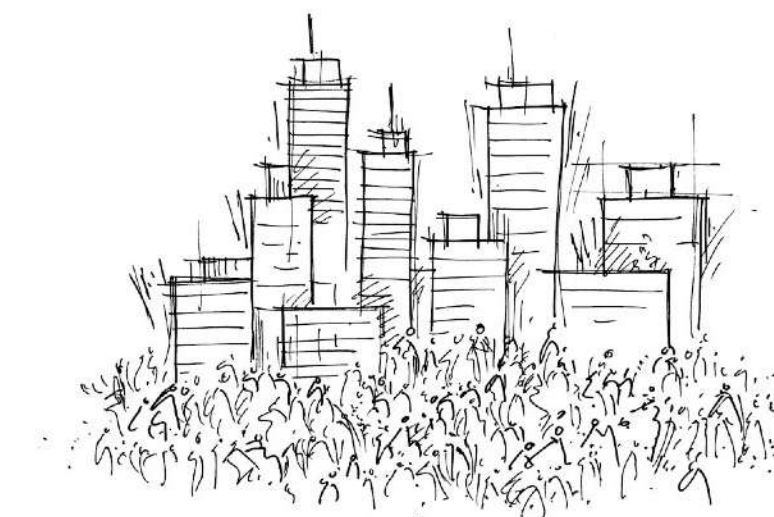
1. Fall of Traditional Family

Nuclear families (one husband, one wife, and two-and-a-half children) now represent less than **15%** of households in most large cities. This standardized model of household is no longer the standard.



2. The Rise of Freelance

According to Upwork in 2019, **35%** of the global workforce was freelance. In 2022, LinkedIn reported: before the pandemic, only 1 in 67 jobs were performed remote. Today, **1 in 7** people work remote. The way we work is fundamentally changing.



3. Proliferation of Sharing

Access is replacing ownership. SPACE10 reported that **96%** of people are willing to share goods and services, giving rise to the sharing economy – a more sustainable distribution of resources, costs, and space.

We're grateful for the press talking about our work.

→ **Click a logo to read an article.** (Non-linked logos from live media and print)

FAST COMPANY

de
zeen
design
magazine

THE SUNDAY TIMES

FRAME

Le Monde

Wallpaper*

THE
WALL STREET
JOURNAL.

dwell

designboom®

Le Parisien

TC TechCrunch

MONOCLE

in
INTERIORS

LE MONITEUR

france•tv

AMC

eporta.

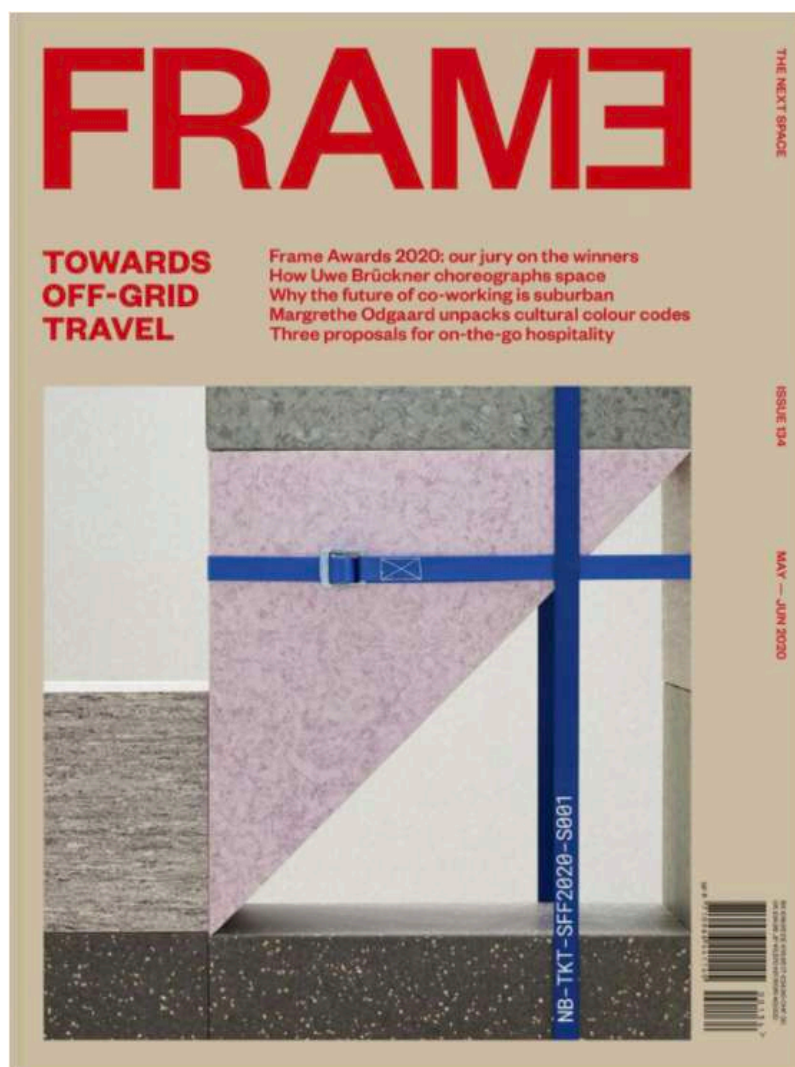
radio
france

INTRAMUROS
LE DESIGN POUR PENSER LE MONDE

ELLE DECOR

ARCHISTORM

Some of our work and ideas circulating in print:



FRAME Award Winners

Cutwork wins 'Societal Innovation of The Year, 2019' - the youngest studio ever to win a Frame Award.

May 2020



Potentials of Shared Habitat

The Sunday Times investigates our Flatmates design and how Ireland should embrace the coliving model.

August 2019



A Studio of the 'CO' Era

A closer look into our studio's industrial technologies, furniture production, and practice developing shared habitats.

March 2020



Full Studio Portrait

We open up an 8-page spread to share our vision for the future of shared architecture and urbanization.

November 2019



Flatmates Coliving by Cutwork

Paris opens its first large-scale coliving space, Flatmates by Cutwork marking a potential shift in the housing market.

November 2018

This next section will give you a quick impression of our working portfolio. For our complete case studies, click to download our **Portfolio here.**

| | |
|-------------------------------|-----------|
| <i>Introduction</i> | 2 |
| → Portfolio Highlights | 11 |
| <i>Service Range</i> | 26 |
| <i>Studio</i> | 51 |
| <i>Next Steps</i> | 59 |

**Status**

Completed, 2021

Client

Bouygues Immobilier

Type

Residential, Coliving

Scope

Architecture

Interior Design

Custom Furniture

Location

Paris, France

Studio Size

21 m² Studio, 54m² Project

Press Coverage

Dwell

Designboom

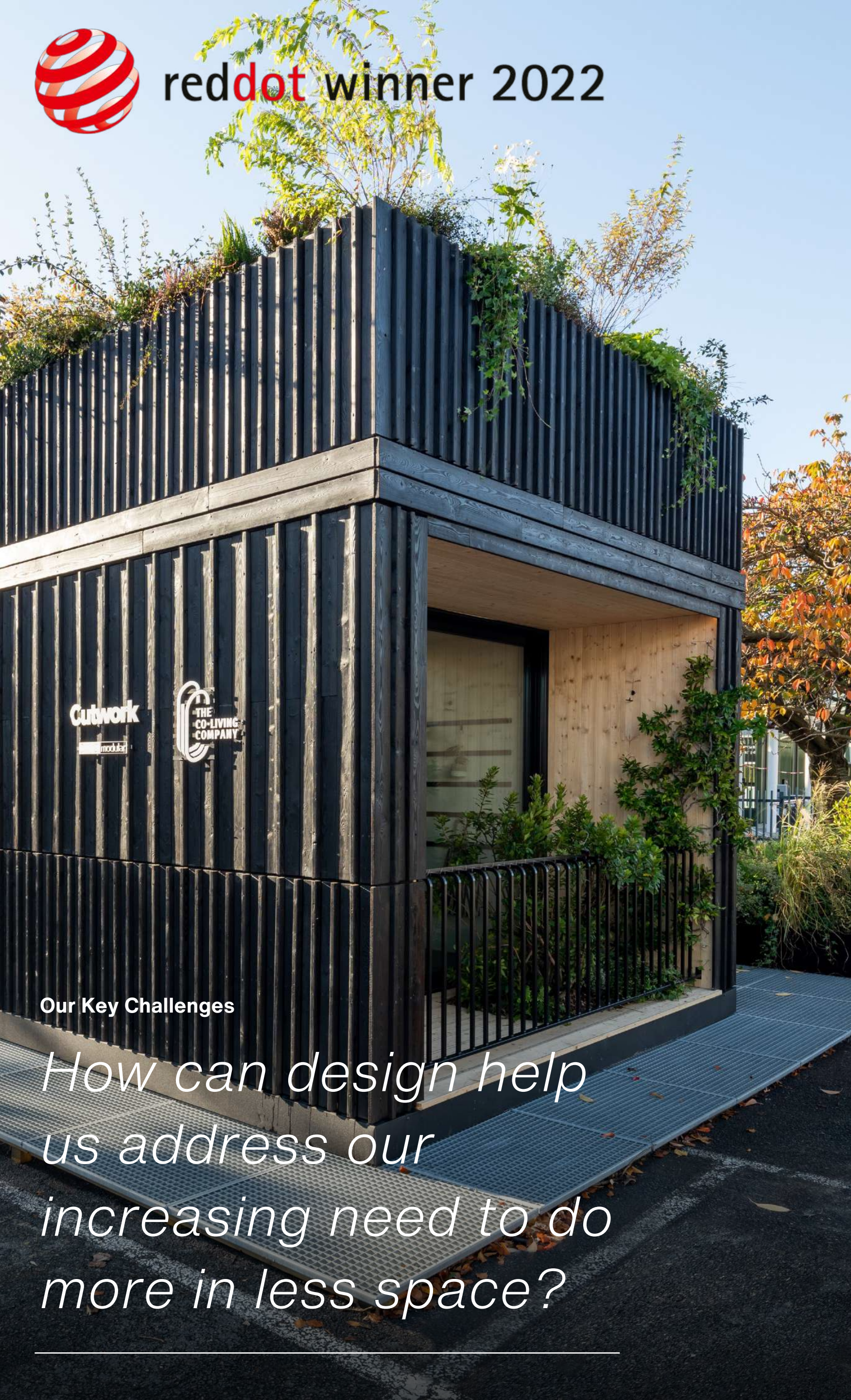
Wallpaper

Frame Magazine





reddot winner 2022



Our Key Challenges

*How can design help
us address our
increasing need to do
more in less space?*



PolyBloc

Status

Completed, 2021

Client

Bouygues Immobilier

Type

Residential, Coliving

Scope

Architecture

Interior Design

Custom Furniture

Location

Paris, France

Studio Size

21m² Studio, 54m² Project

Press Coverage

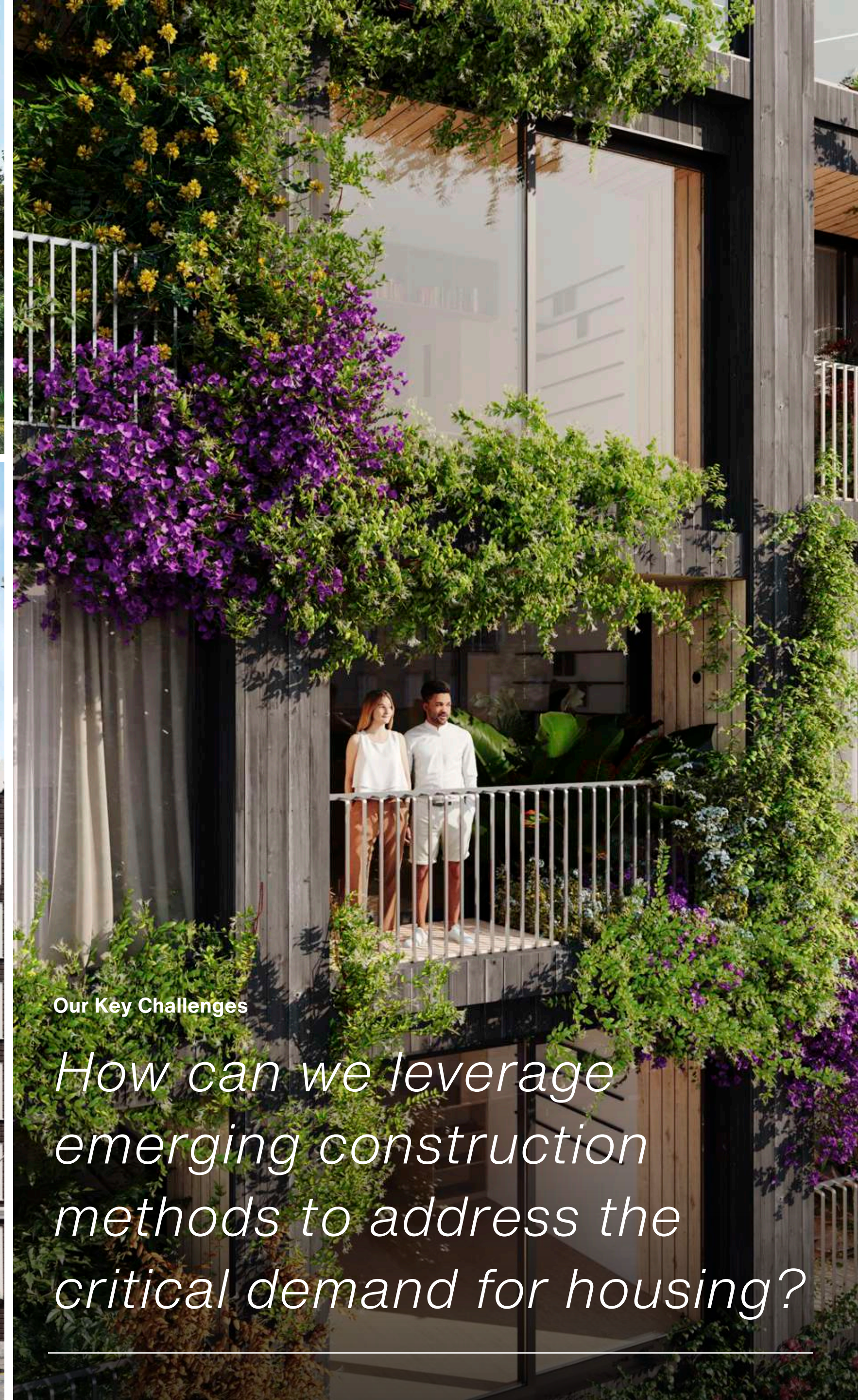
Dwell

Designboom

Wallpaper

Frame Magazine





Our Key Challenges

How can we leverage emerging construction methods to address the critical demand for housing?





FlatMates

Status

Completed, 2019

Client

Station F, Xavier Niel

Type

Residential, Coliving

Scope

Interior Design Concept

Custom Furniture

FF&E

Location

Ivry-sur-Seine, Paris, France

Size

12,000 m²

Press Coverage

Le Monde

The Sunday Times

TechCrunch

Wall Street Journal

Frame Magazine

AMC

La Parisian

France TV

In Interiors

Archilovers

Metropolis



The first large-scale
coliving space in Paris



FRAME AWARDS 2020 WINNER

jury prize

FRAME Award 2020: Societal
Innovation of the Year. Read
the jury's full review [here](#).



Our Key Challenge

*What is today's
shared habitat?*



STATION F

Status

Completed, 2017

Client

Station F / Xavier Niel

Type

Startup Campus, Office, Coworking

Scope

Select Interior Design Concept

Custom Furniture

Location

Paris, France

Size

30,000 m²

Press Coverage

Forbes

Wired

Fast Company

Frame Magazine

Le Moniteur

Eporta

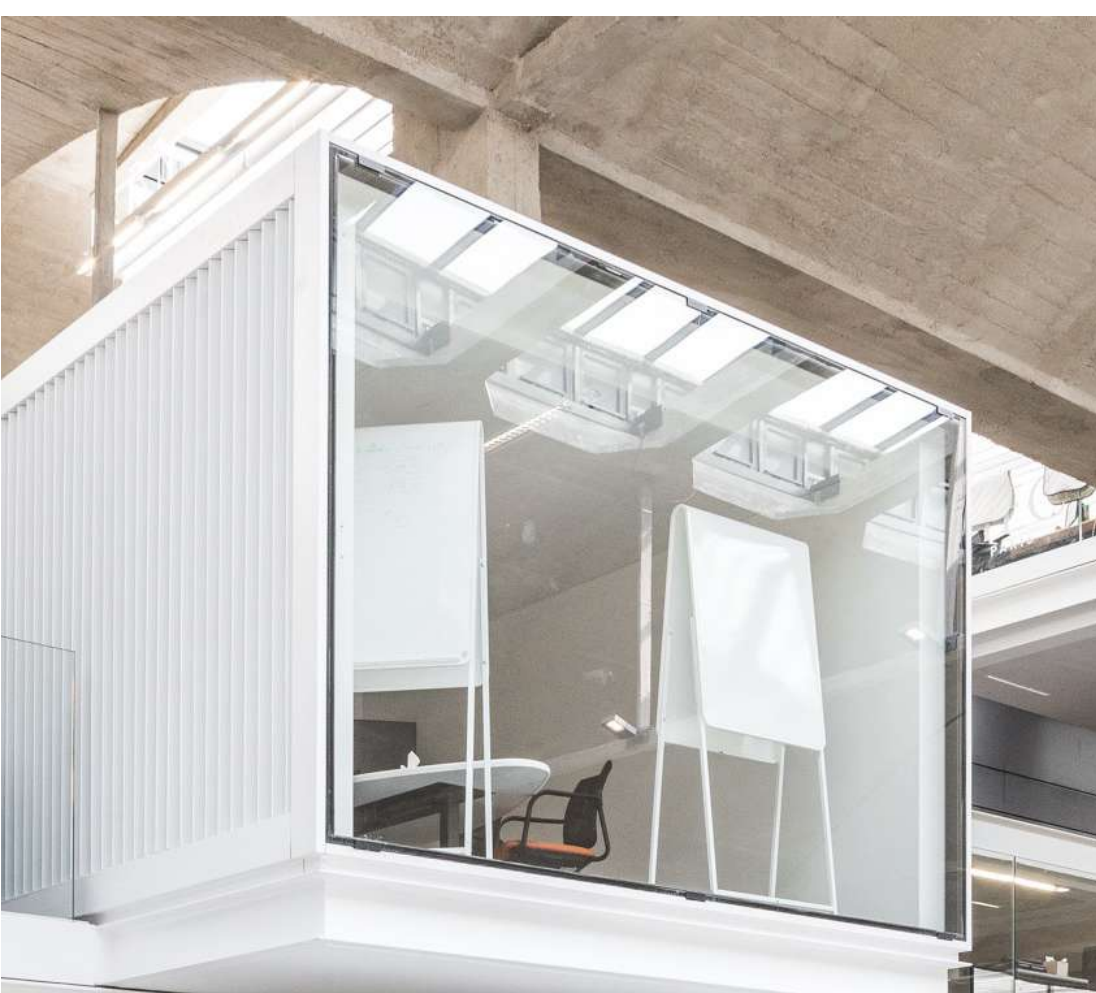
Architizer

Architectural Digest

Space Economy



The largest startup
campus in the world





Cohabitation Unit

Status

In Development, 2019

Client

Internal Research

Type

Blended Residential, Coliving, Coworking

Scope

Innovation Research
Architecture Concept
Interior Design Concept
Nature Integration

Location

TBD

Size

3,500 m², Adaptive

Press Coverage

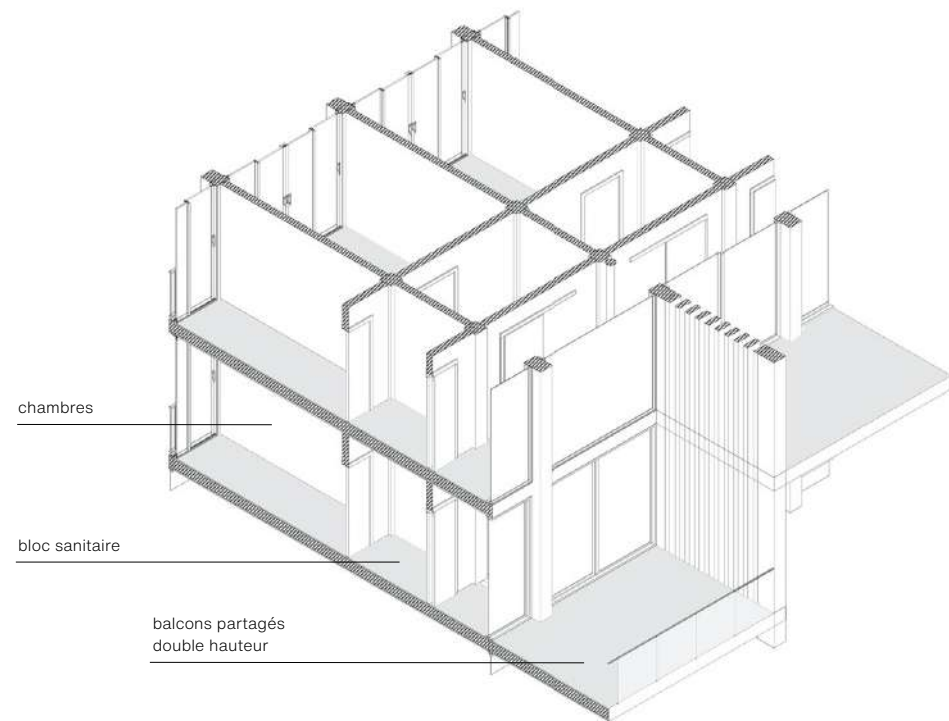
The Sunday Times
Frame Magazine
Le Moniteur
Eporta
L'Usine Digitale
AMC
Coliving Insights



Rethinking the elemental urban block
and shared habitats for today's living

Our Key Challenge

*What is today's elemental
shared urban block?*



**Status**

In Development, 2020

Client

SHOEN Foundation / Takesada
Matsutani

Type

Shared Artist Residency, Exhibition
Space

Scope

Feasibility Study
Architecture Concept
Nature Integration

Location

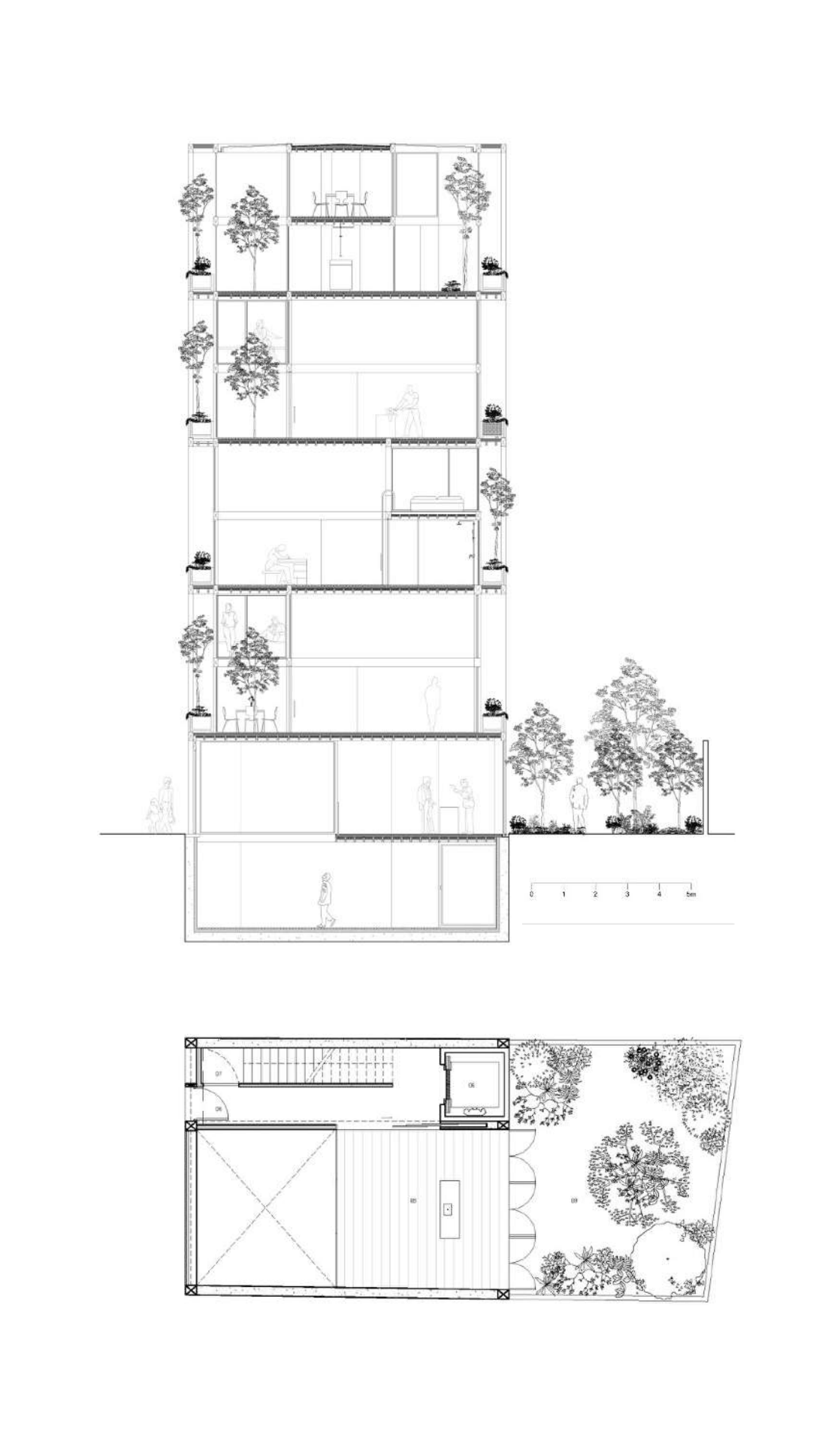
Paris, France

Size

532 m²

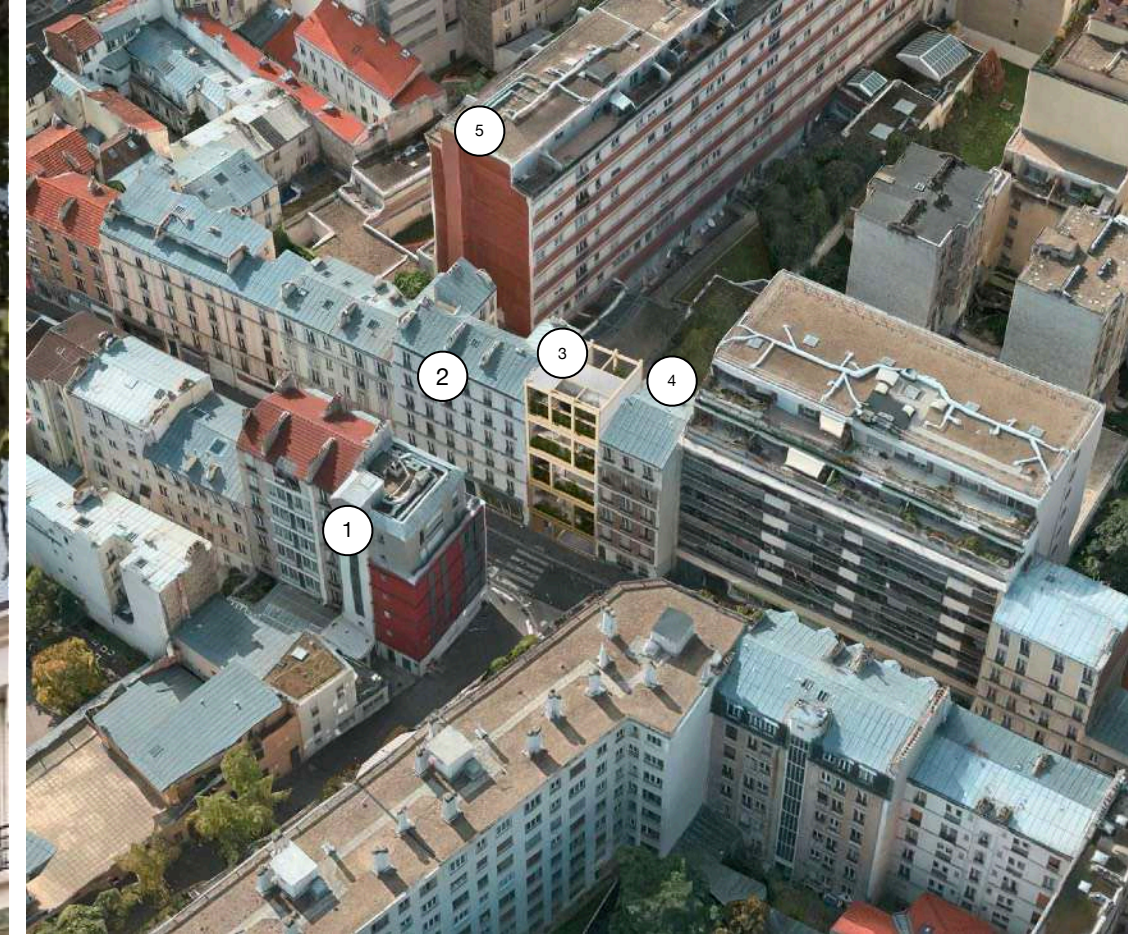


Blended-use, flexible gallery
and shared artist residency.



Our Key Challenge

How can we design access and opportunities to support emerging artists?





CORT~~EX~~ S H E L T E R

Status

In Development, 2018

Client

Cortex Composites USA

Type

Kit Housing Solution, Refugee Shelter

Scope

Architecture Concept
Prefab Structure Design

Location

World-wide

Size

24 m²

Press Coverage

Fast Company
The Sunday Times
Dezeen
Dwell
Designboom
Intramuros
Le Moniteur
Elle Décore
AMC
Eporta



A low-cost, self-built, long-term, just-add-water refugee housing solution by Cutwork.



Our Key Challenge

How can we design a home to help overcome short-term, temporary thinking around the refugee crisis?

This section outlines our design expertise and range of services. The goal is to identify which missions and scopes of intervention are relevant to your project.

| | |
|-----------------------------|-----------|
| <i>Introduction</i> | 2 |
| <i>Portfolio Highlights</i> | 11 |
| → Service Range | 26 |
| <i>Studio</i> | 51 |
| <i>Next Steps</i> | 59 |

Full Service Range



Architecture

Shared architecture, coliving, alternative residential, and prefabrication concepts.



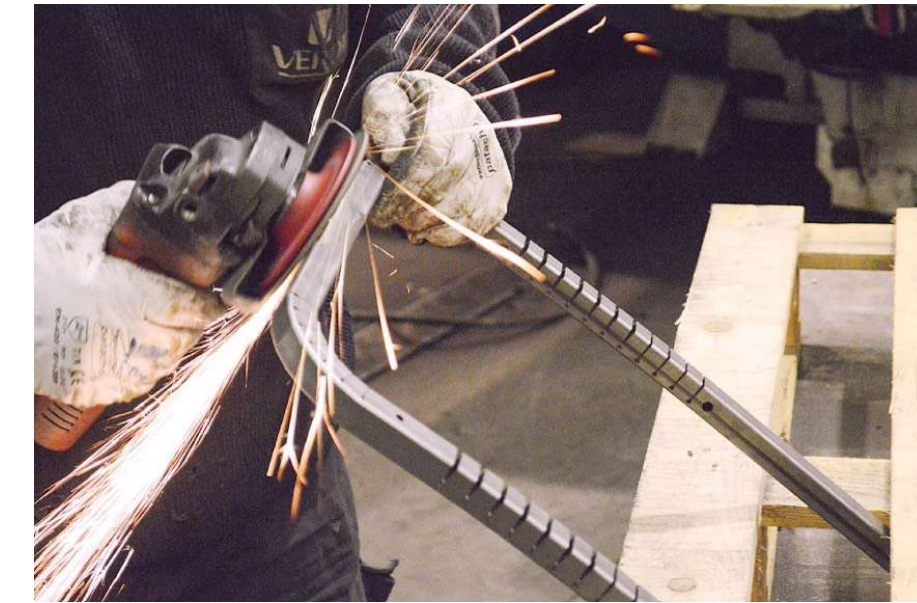
Interior

Flexible, transformable, modular spaces for emerging ways to live and work.



Furniture

Furniture, fixtures, and equipment for shared environments.



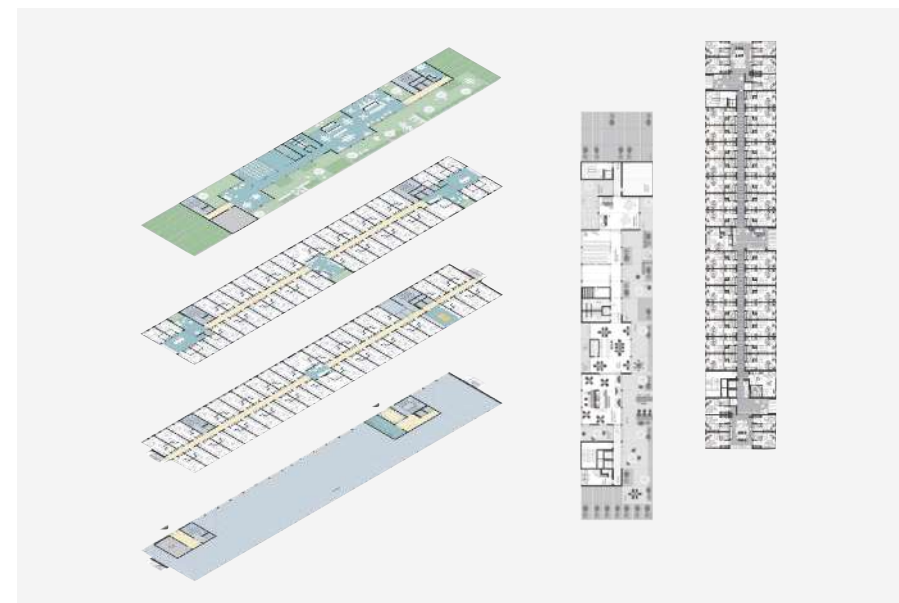
Industrial Design

Custom products, furniture, and structures.



Look & Feel

Spatial identity and user experience for innovative real estate products.



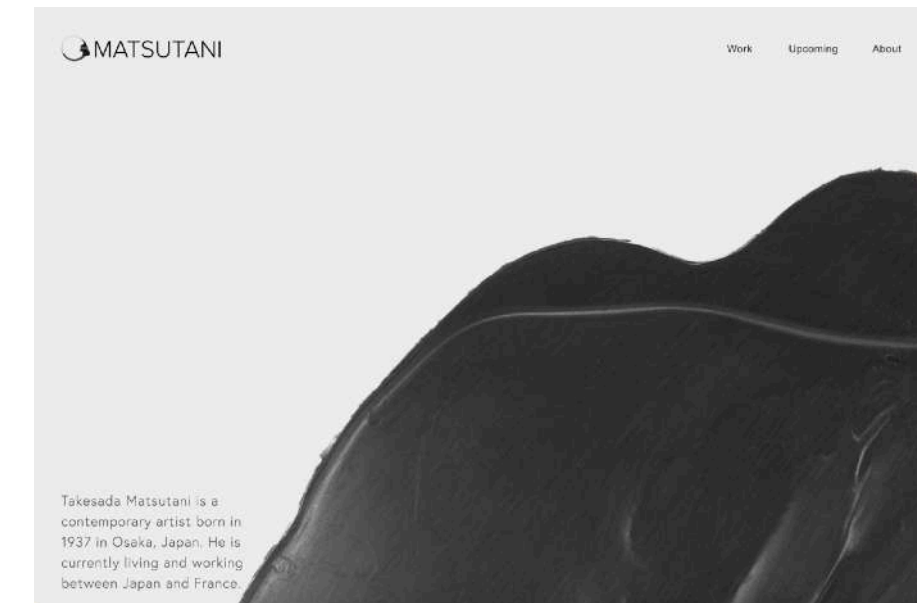
Feasibility Study

Early-stage project validation for projections and stable investment.



Prefab Architecture

Off-site, modular construction, kit-homes, flatpack thinking at urban scale.



Branding & Identity

Graphic identity designed in parallel to visual identity of space.

Architecture

Architecture is a means to propose entirely new ways to live, work, and share. It is a means to reinvent our everyday habitats and make our urban ecosystems more sustainable, resilient, and inclusive.

“The challenge is no longer to live in as many m² as possible – but to live in a habitat that facilitates and encourages social interaction.”

— **Antonin Yuji Maeno**
Partner Architect, Cutwork



Architecture Missions

General Process

- 1 Align on project and brief of requirements.
- 2 Design creative concept, review initial designs.
- 3 Detail specifications for execution.
- 4 Draw execution plans with local architect.
- 5 Oversee construction and delivery with local architect.



Architecture

Architectural design to define:

- Pre-site project research (optional)
- Site analysis
- Volumes and massing
- Programs and functions
- Core and shell design
- Envelope and facade
- Roof elements
- Vertical and horizontal circulation
- Outdoor and surroundings
- Coordination with project team (engineers, consultants, etc.)



Urban Project

Urban design & planning to define:

- Volume studies
- Urban circulation
- Accessibility and access to the site
- Relationship with the urban context
- Neighborhood studies



Landscape Design

Landscape design to define:

- Greenery and botanical curation
- Layout and circulation
- Biodiversity activation
- Living environments
- Earth works and construction

Architecture Project Examples



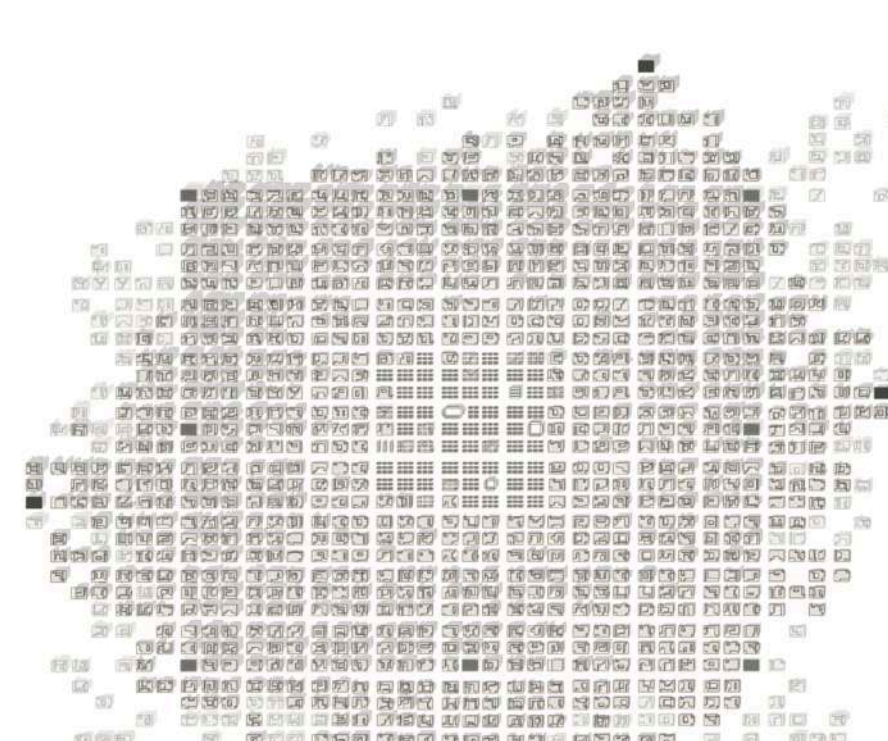
PolyBlock

Exploring how off-site, modular construction could help us build better, faster, and cheaper today for Bouygues Immobilier's new shared living brand expanding across France.



Shoen Foundation

Shared artist residency and exhibition space. How can we build an affordable, space to support emerging artists in the world's most expensive city?



Incremental City

Based on our Cortex Shelter project, we designed a system to transform refugee camps into permanent urban settlements, including community buildings like schools.



Eric Linard Museum

We designed an alternative concept of the Eric Linard Foundation exhibition space with adaptive circulation to craft unique pathway experiences for every opening.

Interior Design

Interior Design concepts are the DNA of a brand translated into spatial experience. Cutwork will develop the look, feel, and identity of the space to materialize the core experience of your brand.

“ *What Cutwork is doing is the future of shared environment – spaces that can be changed to fit your needs.*

— **Brice Bourgeois**
Head of Design, Flatmates



Completed Interior Design Look & Feel and Custom Furniture by Cutwork for FLATMATES, 2019.

Interior Design Missions

General Process

- 1 Research and Analysis: align on project and understand its DNA and constraints.
- 2 Presentation of creative direction of the space with spatial identity and spatial programming.
- 3 Review and integrate client design comments within final documents and content package.
- 4 Presentation of the Initial Design Concept.
- 5 Presentation of the Final Design Concept.



Interior Architecture

Complete interior architecture design, including:

- Analysis of the program and budget proposed by the client
- Determine building organisation/layout of functions
- Final design drawings
- Sourcing and selection of F,F&E
- Estimate of cost of works
- Surface area calculations
- Coordination with execution architect
- Furniture Layout
- Design custom F,F&E as concept sketch or technically detailed (optional)



Interior Finishing

Interior finishing with basic interior architecture, that includes:

- Wall finishes and materials
- Floor finishes and materials
- Ceiling finishes and materials
- Doors and windows finishes and materials
- Carpentry and woodworking elements finishes and materials

Interior Design Project Examples



PolyRoom for Bouygues Immobilier

What is today's bedroom? We are developing a prefab, versatile, compact bedroom and full interior concept for Bouygues Immobilier's new coliving brand with over 25 sites in the pipeline.



Flatmates

The first large-scale coliving space to open in France. Cutwork designed the full interior concept and delivered over 5,000 pieces of custom furniture.



Sharies Living Cafe & Coworking

How can we rethink the 'third space' to act as the extension of a shared living space? We designed a cafe, lounge, and coworking space to help integrate Sharies into the local neighborhood.



Station F

The largest start-up campus in the world. How can we foster connection and ease-of-use in such a vast space? We designed two kinds of meeting space concepts and custom furniture.

Furniture

We can curate and specify all F,F&E and OS&E items needed to outfit your space, including quantities, order lists, layouts, and installation guides.

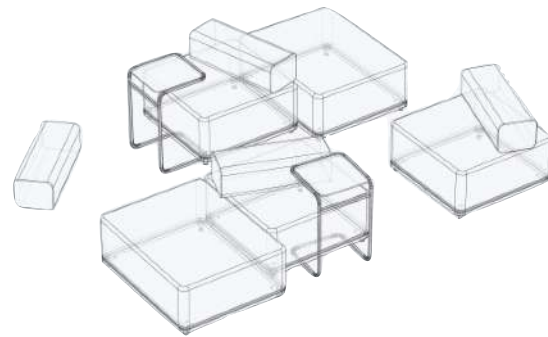
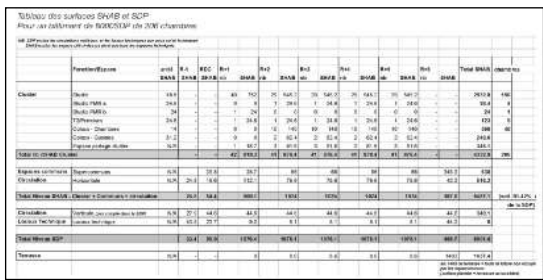
“ Sometimes you may want to group together to work and socialize, and sometimes you may want your own space. Either way, Cutwork’s modular furniture works.

— Roxanne Varza
Director, Station F



Cutwork's signature furniture collection.

Furniture Missions



F,F&E Selection

Furniture, fixtures, and equipment selection can combine Cutwork furniture, specially designed for flexible shared spaces, in addition to third-party items.

- Sourcing and specifying all furniture, fixtures, materials, and bespoke elements needed for the space
- Quantities
- Prices

Furniture Layout

Layout development, including:

- Floor plans
- Elevations
- Sections
- Complete installation guidelines
- On-measure furniture modifications (as required)

Custom Furniture

Cutwork will design and develop furniture designs and interior elements, such as special joinery, seating, fixtures, and signature furniture needed for the space and fully aligned with the brand and spatial identity.

- Concept design
- Detail design
- Material selection
- Prototyping
- Production drawings
- Oversee and coordinate the production and delivery of custom products

F,F&E and O,S&E Fulfillment

Cutwork works in partnership with The Great Hospitality to provide F,F&E and O,S&E execution services, including:

- Listing, sourcing, budgeting of third-party furniture
- Ordering, planning, delivery and installation on site

Order from our **Furniture** catalogue

→ **Download our *PDF Product Catalogue* here.**

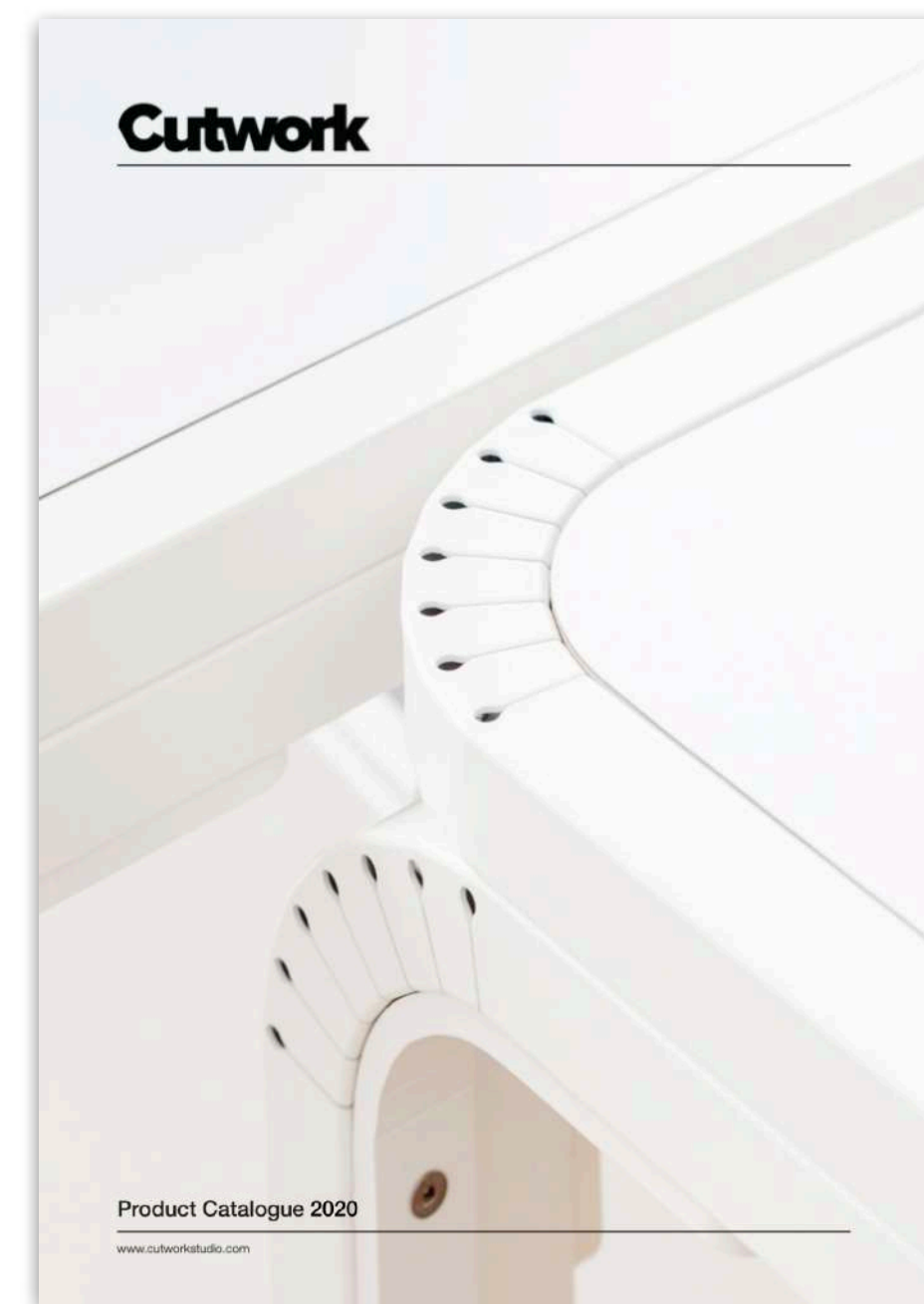
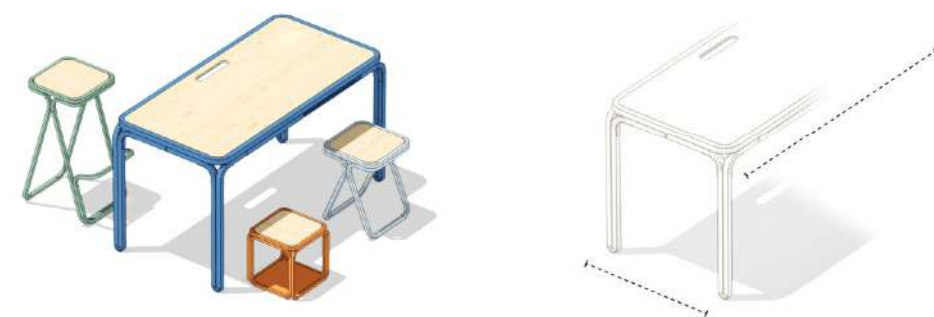
Process to Order

- 1 Define furniture selection, materials, finishing, quantities from Cutwork Catalogue (as a standard furniture order or as specified in FF&E list for Interior Design Concept)
- 2 Installation and assembly guidelines (as required).
- 3 Production run and “nesting” for optimal delivery and installation.
- 4 Delivery to site.

Colour & Size

Our standard products typically feature an optional wood tops and are available in any RAL colour finishing.

These base designs can also be easily fit to the exact measurements your space needs.



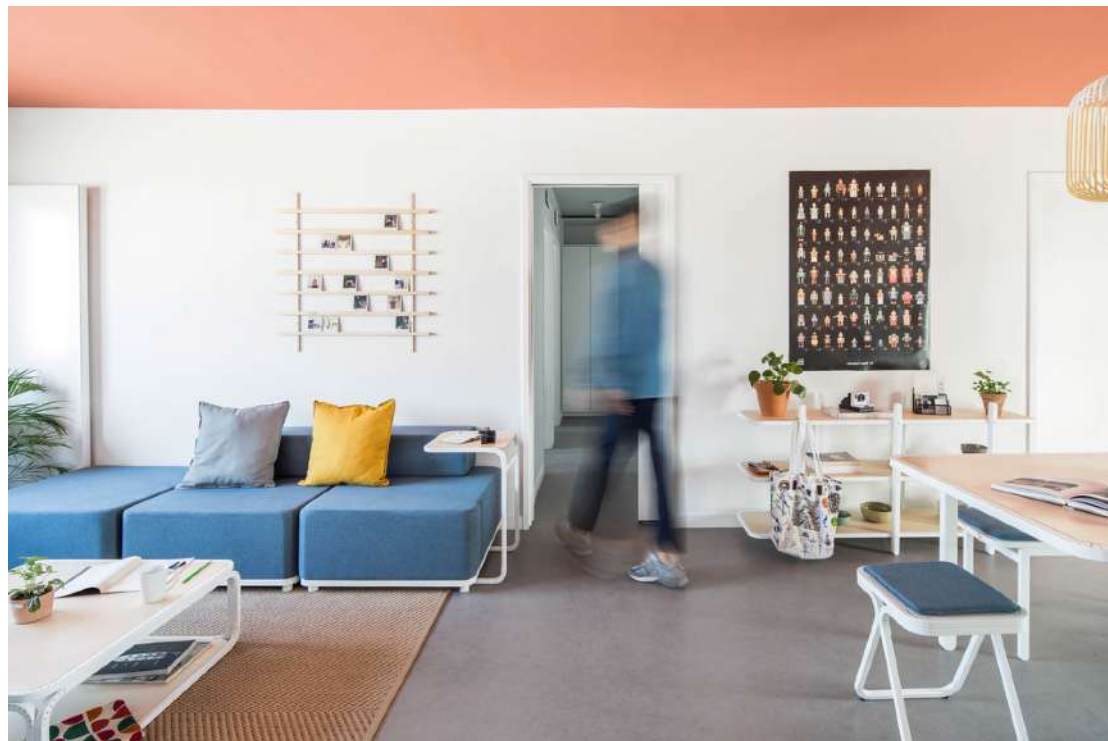
See Our Catalogue

Our base catalogue includes Coworking, Coliving, and Signature Collections of furniture and interior products.

Click here to download our PDF Product Catalogue to review furniture, materials, colors, and quantities to request a quote.

The next page highlights our most popular designs from each collection.

Furniture Project Examples & Collections



Coliving Collection

Adaptable, intuitive, and inviting designs carefully thought for shared living and community-building spaces.



Coworking Collection

Specialized products for flexible, versatile workspaces. Built tough for heavy everyday shared use.



Classic Collection

This was Cutwork's original collection – our signature bend technologies expressed in iconic forms and timeless design.



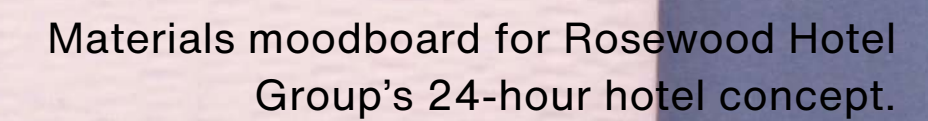
GATHER! Kitchens

We are reimagining today's kitchens for shared habitats with German designer Stefan Diez. The designs will be premiered at IMMO 2022.

This work is done independent of a site and helps build the foundation of a brand to streamline the process of scaling across multiple locations.

“Cutwork brings the best of international practices and team to design the new standards of living and working today.”

cutworkstudio.com



Look & Feel Missions

General Process

- 1 Kickstart meeting with the client to establish the roadmap.
- 2 Workshop with the client's team for key project contexts.
- 3 Research stage and synthesizing complete analysis.
- 4 Site and application strategy and design validation.
- 5 Deliver complete Design Development Booklet and design files.



Look & Feel

A Look & Feel is independent of a site and defines, develops and materializes the spatial identity and experience for the new product and brand. This includes:

- Define spatial design concept through layout plans
- Develop brand materiality, colour scheme, visual atmosphere
- Define direction for F,F&E
- Preliminary design of custom F,F&E (optional)

Innovation Research

Research missions establish product innovation strategy and will be defined to specific topics of interest to the project. This could include:

- In-depth demographic / target market analysis
- Location(s) / neighborhood analysis
- Initial brand identity research
- Typology research
- User trends
- Identify key areas of innovation for architecture and interior concept missions

Look & Feel Project Examples



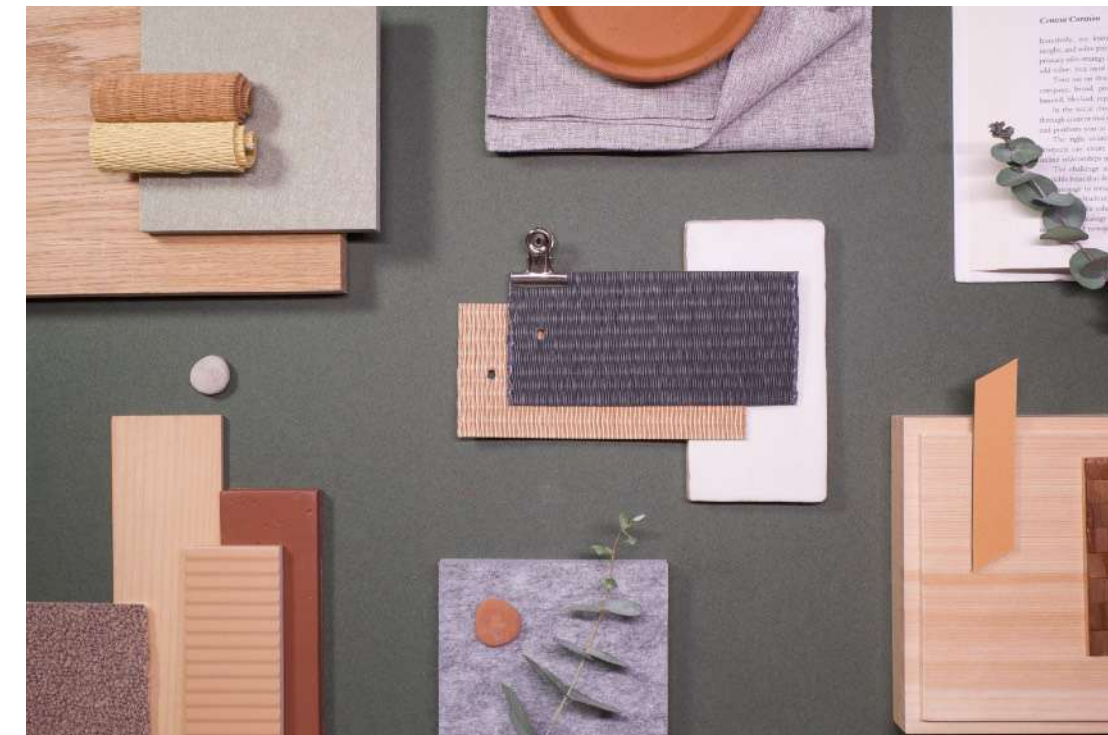
Rosewood Hotel

We developed multiple 24-hour-use bedroom concepts that could be easily reconfigured to accommodate a wider range of activities within the same space.



Bouygues Immobilier

We performed an Innovation Research mission to define Bouygues Immobilier's new coliving experience, which lead us to rethink today's bedroom with a versatile prefab block.



Urban Campus

Urban Campus asked us to conduct a budget feasibility and initial FF&E selection list for a new blended-use site.



Cocoon Living

We developed a Look & Feel concept for Cocoon Living, focused on wellbeing and designed to support their multigenerational shared habitat.

Feasibility Studies

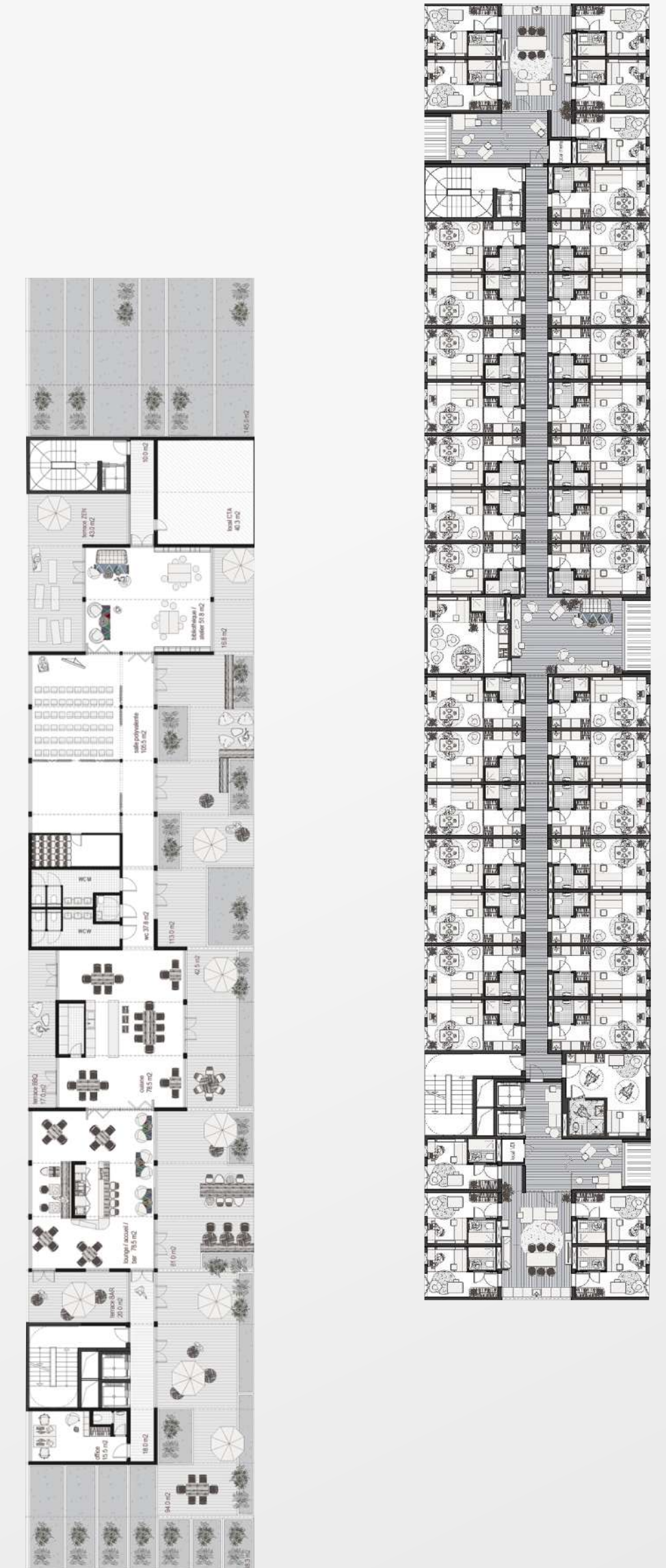
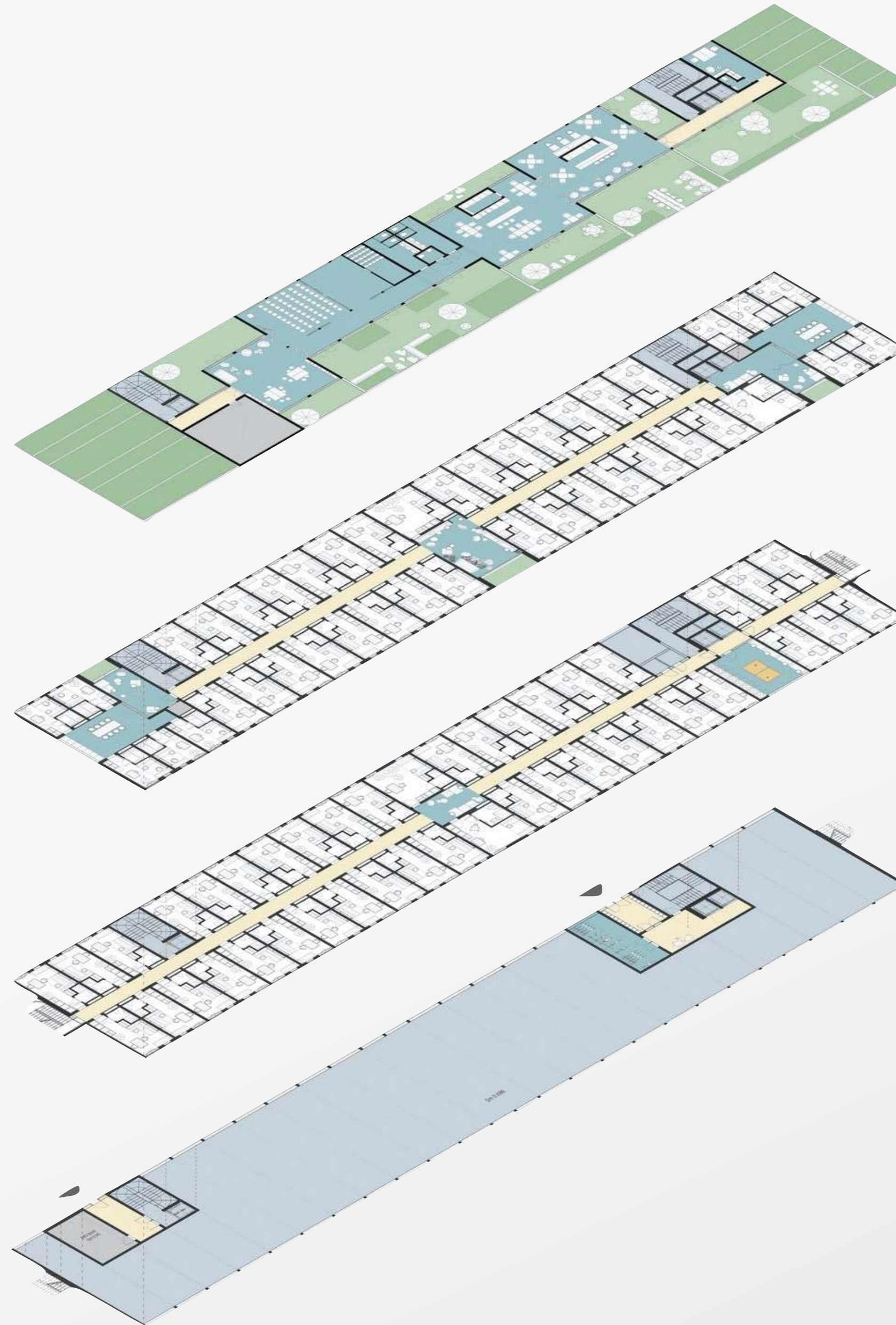
Cutwork guides clients through the initial stage of selecting a site for a project to help validate its viability before the client invests significant funding.

Feasibility studies interrogate economic viability and act as a cost-effective reality-check for the proposed development and test alternative possibilities a site can offer.

“*Working with Cutwork means working with some of the brightest minds reinventing shared living.*”

— **Gui Perdrix**

Founder Art of Co & Global Director Co-Liv

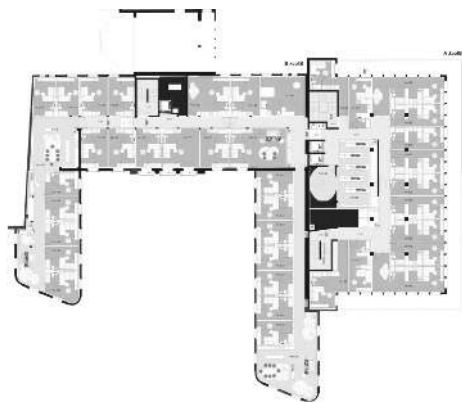


Complete feasibility study by Cutwork, for
Bouygues Immobilier's new coliving brand, 2020.

Feasibility Study Missions

General Process

- 1 Zoning / code analysis (location, size, shape, use of building, etc.)
- 2 Evaluation of local codes and regulations applicable to the chosen site.
- 3 Capacity study, definition of optimal ratios for private vs shared space, massing study, Schematic floor plans, surface area calculations.
- 4 Deliver Feasibility Study Booklet.



Confirmation Feasibility

Est. 1.5-2 working days:

- Review of existing plans to provide rapid analysis, validation, key suggestions, and modifications
- Capacity evaluation and definition for optimal ratios of private vs shared space

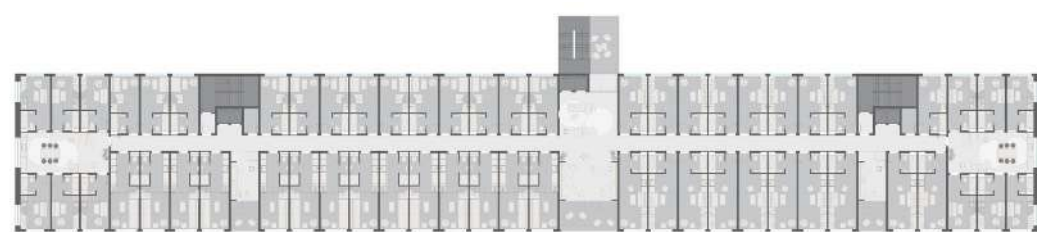


Complete Feasibility

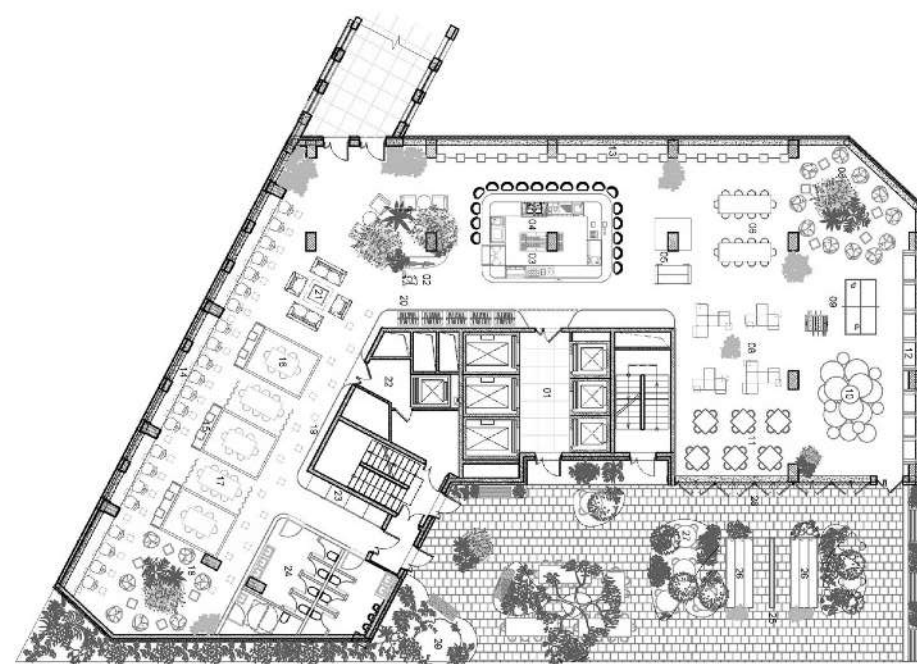
Est. 3-4 working days to deliver PDF including:

- Short text describing viability of client's proposed brief on this site
- Schematic site plan (scale $\geq 1:500$)
- Schematic floorplans of each floor/floor type (scale $\leq 1:200$)
- 3D volume massing model image(s) export showing the massing of the building envelope
- Surface area table/spreadsheet detailing m²
- Capacity evaluation and definition for optimal ratios of private vs shared space

Feasibility Study Project Examples

**Lyon, FR**

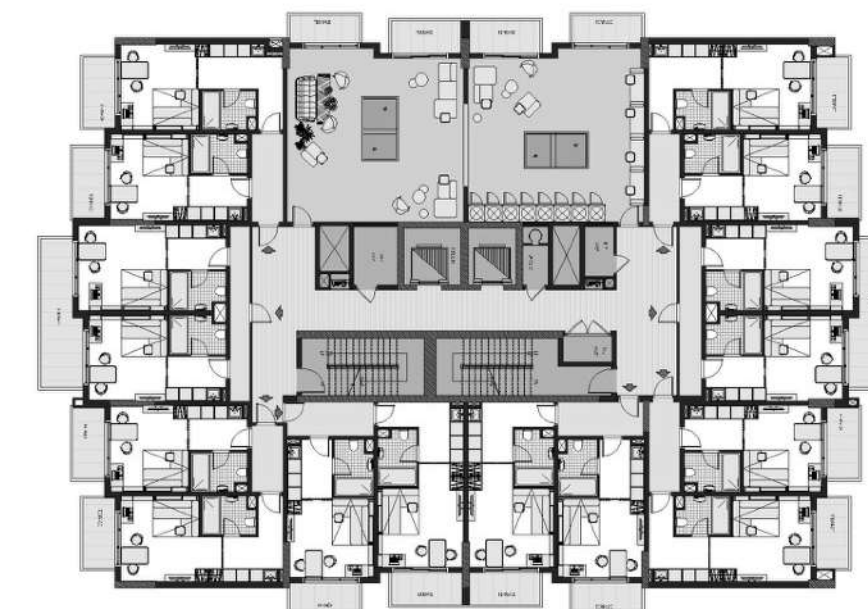
Complete Feasibility for Bouygues Immobilier / Clic Coliving

**St. Petersburg, RU**

Complete Feasibility for Becar AM

**Paris, FR**

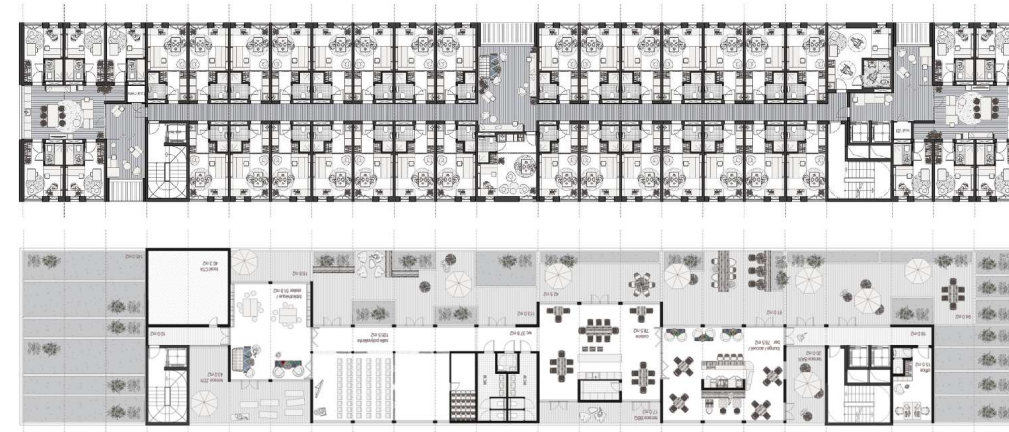
Complete Feasibility for Nexity

**Dubai, UE**

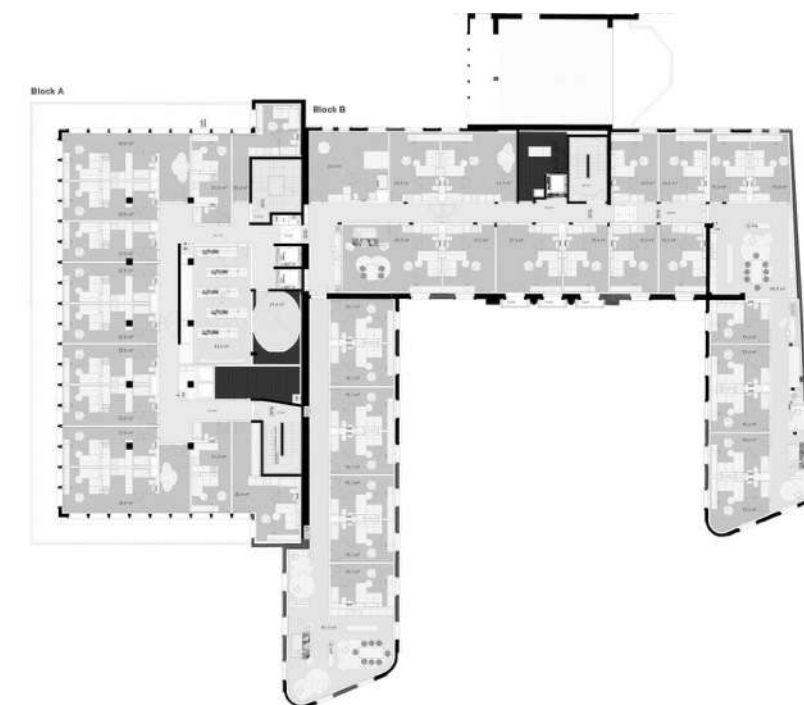
Complete feasibility for Coasis Coliving

**Lile, FR**

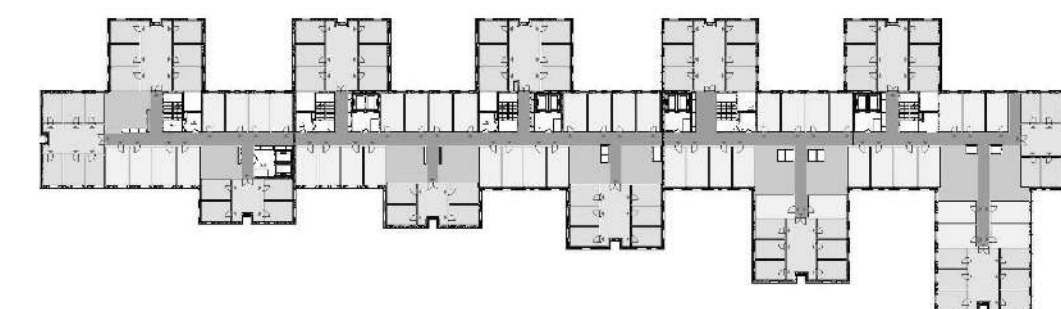
Complete Feasibility for Node Living

**Bagnolet, FR**

Complete Feasibility for Bouygues Immobilier / Clic Coliving

**Bordeaux, Fr**

Complete Feasibility for Bouygues Immobilier / Clic Coliving

**St. Petersburg, RU**

Complete Feasibility for Becar AM

Prefab Architecture

Expertise includes design, prototyping, and delivery of prefab blocks, kit-housing, and cabins – either integrated within a building or as stand-alone products.

“*Cutwork’s modular architecture has been marked by confidence and insight. Above all, we felt great freedom to explore new worlds through their deep reflection on usages.*

— **Olivier Durix**

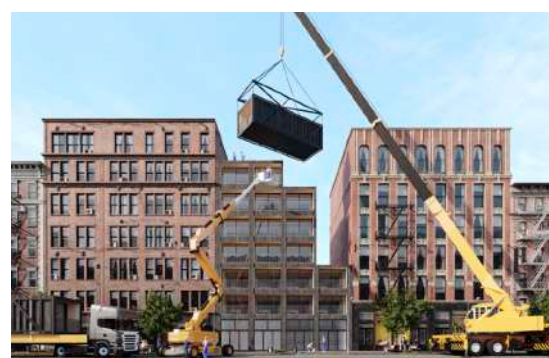
Director of New Products. Bouygues Immobilier



Factory of our key partner DMD Modular, specialized in prefab, modular construction.

Prefab Architecture Missions

Prefab architecture can be easily integrated into standard **Architecture** or **Interior Design** missions.



Building Blocks

Modular construction blocks and elements that can stack to reduce time, labour, materials, and cost to build. Design elements include:

- Modular bedroom designs
- Modular shared spaces
- Modular facade elements
- Prototyping / manufacturing supervision and finishing approval

Interior Blocks

Designed to be easily plugged into an architectural shell, these blocks integrate different layers of functionality and make installation fast. Design elements include:

- Bathroom / wet block
- Kitchen block
- Multi-function, custom block
- Prototyping / manufacturing supervision and finishing approval

Kit Homes

Affordable kit homes, shelters, and assembly systems that act as self-sufficient, stand-alone products. Design elements include:

- Concept design
- Layout and floorplans
- Assembly system
- Flatpack shipping integration
- Prototyping / manufacturing supervision and finishing approval

Prefab Cabins

Prefab cabins for urban and rural locations. Design elements include:

- Concept design
- Layout and floorplans
- Optional off-the-grid utilities
- Optional flatpack, kit assembly for remote installations
- Prototyping / manufacturing supervision and finishing approval

Prefab Building Project Examples



Cortex Shelter

Combining Cutwork's patented metallic assembly system, and Cortex Composite's rollable concrete textile, we designed an affordable, long-term refugee shelter solution.



PolyBloc

PolyBloc is a prefab construction research project to rethink habitats to accommodate people's changing positions, roles, and relationships more fluidly through life.



PolyRoom

Together with Bouygues Immobilier, Cutwork reimagined today's bedroom as a flexible-use prefab block, designed to address specific needs of shared living.



Cutwork Prefab Cabin

Cutwork's Prefab Cabin is assembled in modular blocks that can be reconfigured and landed in any panoramic location, allowing inhabitants to step through the frame into beautiful nature.

Brand Identity

Cutwork can provide creative consultancy and graphic identity for operators and spatial brands – fully integrated and in harmony with architectural and interior design concepts of the space.

“*Cutwork has always inspired me by the self-evident nature of their designs – not just spaces and furniture but in how they make these environments fit seamlessly with the client’s brand identity.*”

— **Robert Nakata**

Cofounder, 72andsunny,
Founding Investor, Cutwork

Takesada Matsutani is a contemporary artist born in 1937 in Osaka, Japan. He is currently living and working between Japan and France.

Full brand identity and website development for
Japanese artist Takesada Matsutani, 2018.



With support from one of the top minds in graphic design.

Robert Nakata, partner and cofounder of Cutwork, is a world-renowned graphic designer and founder of international agency 72andSunny.

His career has overseen high-profile branding projects, including Apple's earliest campaigns, launching Nike at Widen & Kennedy, and most recently, a bid for LA's 2028 Summer Olympics.

Robert lends creative direction and expertise on identity projects, helping new brands connect with both local and global audiences.

Brand Identity Missions

General Process

- 1 Align on project requirements, market, and brief.
- 2 Develop brand concept, review designs.
- 3 Produce and develop print and/or digital materials.
- 4 Present designs, quality control, review and apply revisions.
- 5 Deliver full branding package.



Brand Identity

Cutwork helps you (re)define your brand identity, including name and logo, carefully attuned to your values and vision of change.

- Brand name
- Logo
- Signature typography
- Signature colors
- Complete Brand Guidelines



Marketing Materials

Creation of digital and physical brand assets can include:

- Design and develop company website
- Apply branding to stationary & communications materials
- Strategy and art direction across social media
- Photo and video creative direction and production
- Signage & way-finding elements

Brand Identity Project Examples



Cortex Composites

We designed, produced content, and developed two websites for Cortex Composites. First, their company website, the second Cortex Shelter by Cutwork.



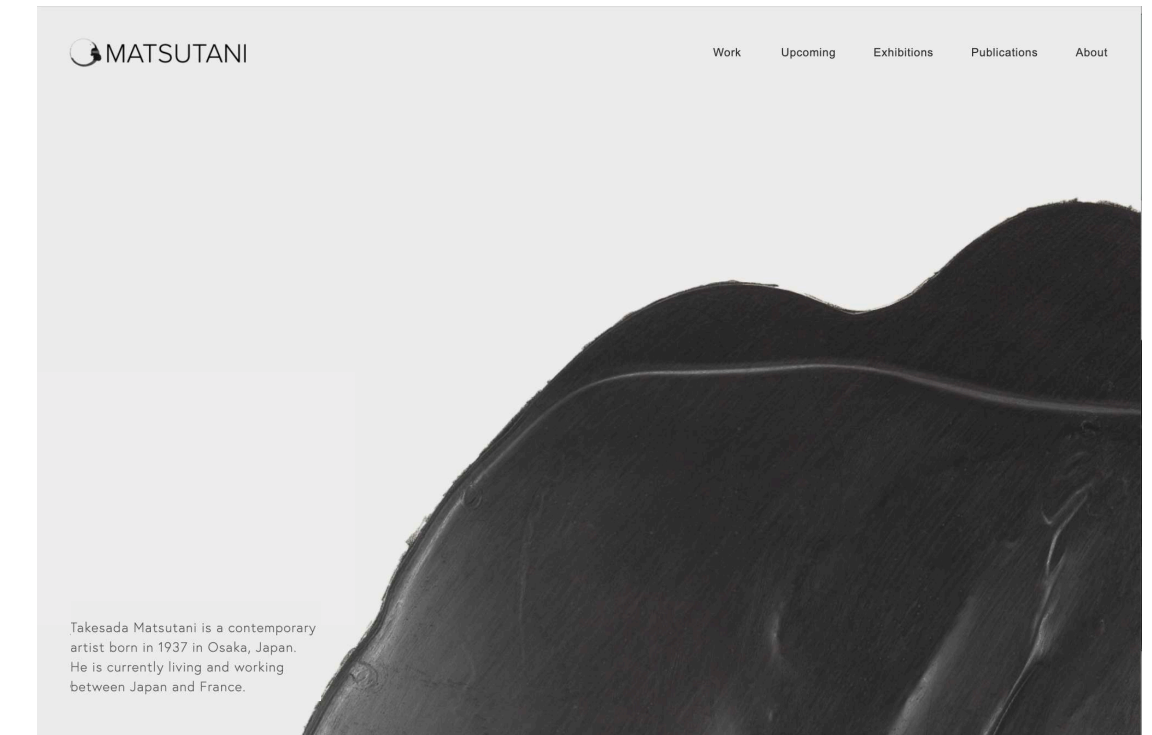
Unfold

Unfold by Cutwork is a pocket-size, one-page magazine full of ideas for today's living. Once a month, one A4, one topic. Designed to be printed at home, read anywhere.



Bloomin

Exploration of multiple graphic identity concepts, signage, and guidelines for a new coliving brand.

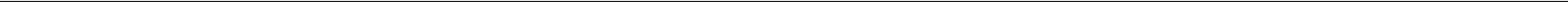


Takesada Matsutani

We first crafted the full brand identity for Japanese artist Takesada Matsutani. This led to building him a complete online portfolio website spanning over 50 years of work.

Lastly, here’s a closer look inside our studio practice and growing team – along with a few initiatives we’ve been proud to launch.

| | |
|-----------------------------|-----------|
| <i>Introduction</i> | 2 |
| <i>Portfolio Highlights</i> | 11 |
| <i>Service Range</i> | 26 |
| → Studio | 51 |
| <i>Next Steps</i> | 59 |



Hello from an award-winning team of architects,
designers, engineers, naturalists, and researchers.



Kelsea Crawford

Partner, CEO



Antonin Yuji Maeno

Partner, Architect



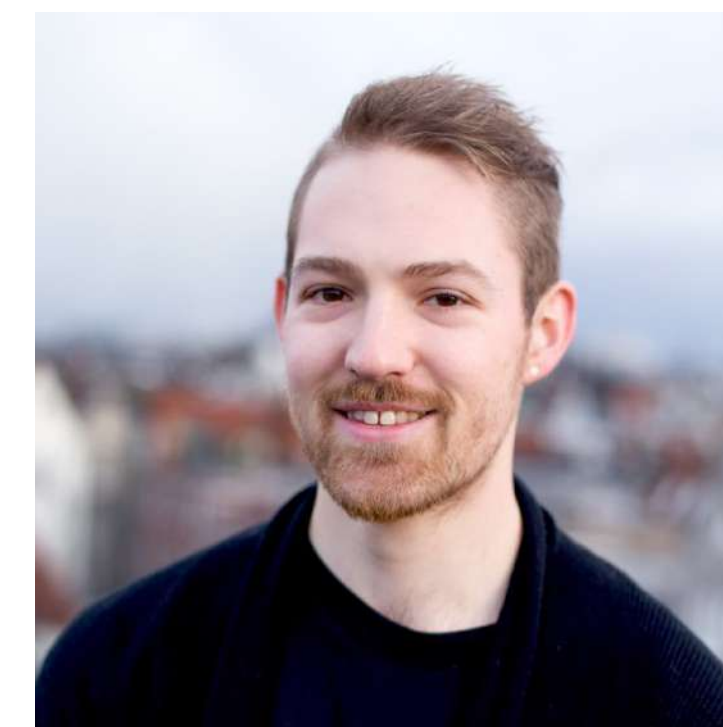
George Braham

Lead Designer, Production



Andrea Levorato

Project Manager, Architect



Bryce Willem

CMO, Research Director



Robert Nakata

Partner, Investor



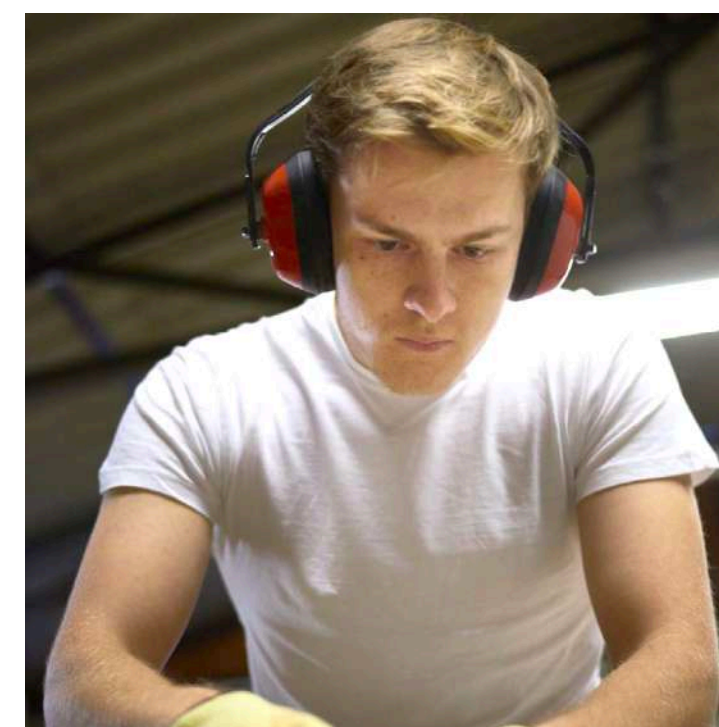
Gwendoline Harper-Michon

COO



Vladislav Kostadinov

Lead Architect



Ben Perkins

Systems Designer



Hannah Kreile

Business Development

Here are some of our current projects in development.



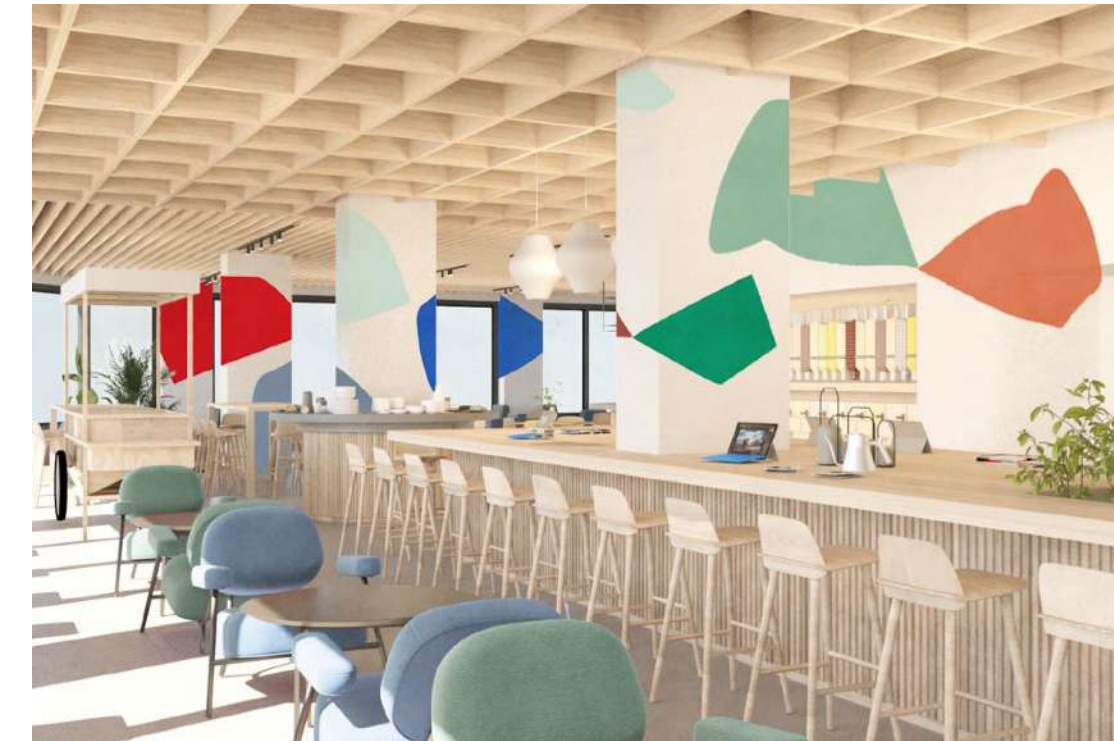
Bouygues Coliving

The first site for Bouygues Immobilier's coliving brand is secured in Bordeaux and we are continuing our work to define the interior design and apply the guidelines we established.



Stefan Diez x Cutwork

German designer Stefan Diez and Cutwork are reimagining today's kitchens for shared habitats. This collection of designs will be exhibited at IMMO 2022.



First Coliving in Russia

Concept development and interiors for common spaces in Russia's first coliving brand, Coasis by Becar Asset Management, opening in St. Petersburg.



Transforming Nexity Offices

In response to *work-from-anywhere*, Nexity has asked us to understand and develop systems to transform traditional office spaces into residential habitats.

We work with pioneering companies who are reimagining the ways we live and work.

ROSEWOOD
HOTEL GROUP

FlatMates

Bouygues
Immobilier

MOKRIN
HOUSE
OF IDEAS

GREENPEACE

sharies
LIVING EXPERIENCES

nexity

becar
Asset
Management

hello
tomorrow

STATION F

CORTEX
COMPOSITES

VETA

URBANCAMPUS

eit Climate-KIC

SHOEN

COWORKING
Europe

di:'Angewandte

ERANOS
PARIS - SEOUL

OBOS

DIEZ
OFFICE

Our closest partners are reshaping today's living and often work with us to bring visionary projects to life.



Oke Hauser

Creative Lead, MINI Living



Alexandre Born

Director of Development, PCA



Bas van de Poel

Creative Director, SPACE10



Vera Lucas Quintela

Deputy Director, BETC



Michael Dandrieux

PhD Sociology of Imagination



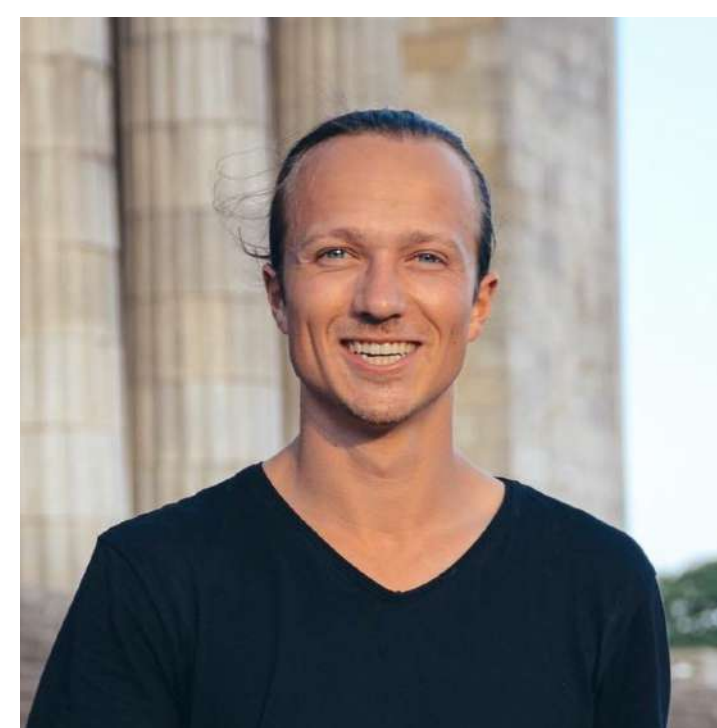
Matthew Lesniak

Cofounder, Conscious Coliving



Brice Bourgeois

Former Head Design, Station F



Gui Perdrix

Global Director, Co-Liv



Bertie van Wyk

Workplace Lead, Herman Miller



Martin Raymond

Founder, The Future Laboratory



In July 2020, we launched **Unfold**, a pocket-size, one-page magazine exploring big questions about today's living.

Once a quarter, one A4, one topic – from the perspectives of designers, inventors, sociologists, architects, and ecologists.

We hope Unfold surprises readers with unexpected perspectives and original ideas – that these pages will open up inspiring conversations. Read our latest issues online or print for yourself at home and read anywhere:

→ **Unfold the topics here.**





Window Birds, an invitation to re-open our senses to our immediate environments and the broader territories we share with other, non-human living beings.

If you know Cutwork cofounder Antonin, you probably know **he loves watching birds!**

In response to global confinement in April 2020, we made a downloadable PDF introduction guide to urban bird watching called Window Birds.

It features 55 different birds sharing our everyday habitats that you can see just looking from a window — an alternative means to reframe and expand our everyday relationships with nature.

→ **Check out Window Birds.**



In April 2019, Cutwork co-founders, Kelsea Crawford and Antonin Yuji Maeno delivered a **TEDx** about the future of shared architecture.

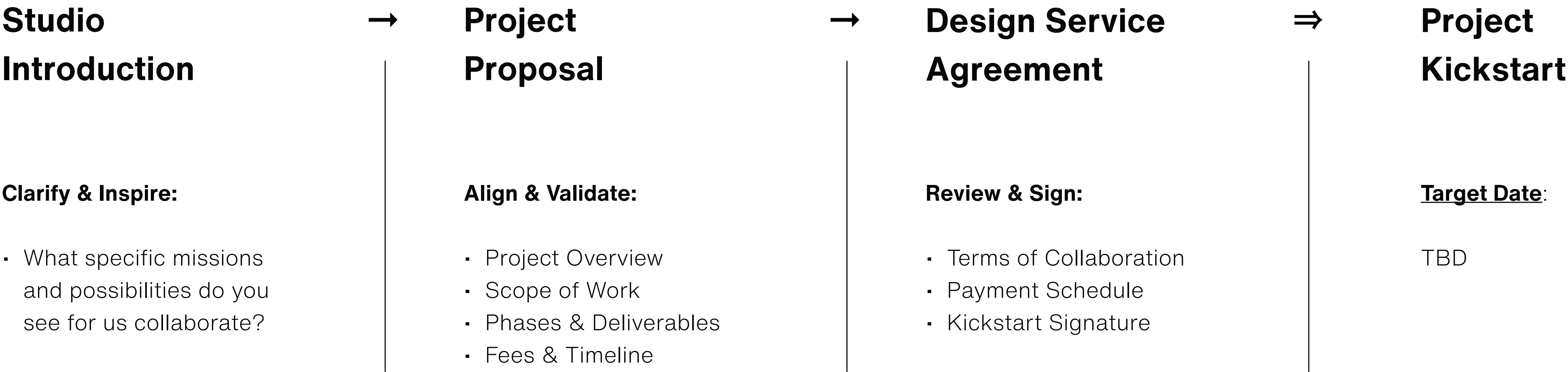
For a broader overview of our studio vision and expanding practice, click the image or follow this link:

cutworkstudio.com/tedx

Password: togetherhaschanged



How do we take the next steps?



Thank you!

Cutwork



Paris
6 avenue René Coty
75014 Paris, FR

Amsterdam
Achter Oosteinde 2
1017 XP Amsterdam, NL

Billing / Registration
23 rue d'Anjou
75008 Paris, FR

Contact
hello@cutworkstudio.com
+33 7 49 18 89 36

Web
cutworkstudio.com
instagram: @cutwork

Copyright 2022 ©
All rights reserved. This document and the ideas and content contained herein are the intellectual property of Cutwork. No part of this publication may be reproduced or stored in a retrieval system in any form or by any means without the prior written and signed permission from the copyright owner.